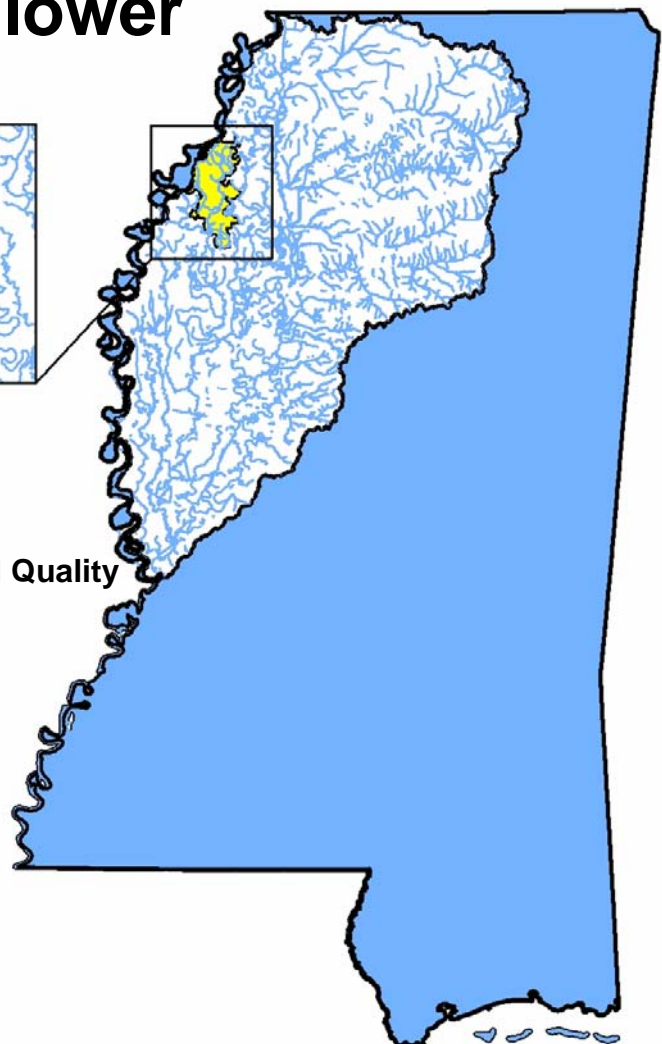
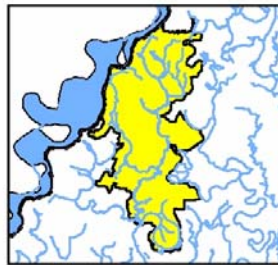


Fecal Coliform TMDL for the Big Sunflower River and the Little Sunflower River

Yazoo River Basin

Coahoma and Sunflower Counties, Mississippi



Prepared By

**Mississippi Department of Environmental Quality
Office of Pollution Control
Standards, Modeling, and TMDL Branch**



Mississippi Department
of Environmental Quality

FOREWORD

The report contains one or more Total Maximum Daily Loads (TMDLs) for water body segments found on Mississippi's current Section 303(d) List of Impaired Water Bodies. The implementation of the TMDLs contained herein will be prioritized within Mississippi's rotating basin approach.

As additional information becomes available, the TMDLs may be updated. Such additional information may include water quality and quantity data, changes in pollutant loadings, modifications to the water quality standards or criteria, or changes in landuse within the watershed. In some cases, additional water quality data may indicate that no impairment exists.

Prefixes for fractions and multiples of SI units

Fraction	Prefix	Symbol	Multiple	Prefix	Symbol
10^{-1}	deci	d	10	deka	da
10^{-2}	centi	c	10^2	hecto	h
10^{-3}	milli	m	10^3	kilo	k
10^{-6}	micro	μ	10^6	mega	M
10^{-9}	nano	n	10^9	giga	G
10^{-12}	pico	p	10^{12}	tera	T
10^{-15}	femto	f	10^{15}	peta	P
10^{-18}	atto	a	10^{18}	exa	E

Conversion Factors

To convert from	To	Multiply by	To Convert from	To	Multiply by
Acres	Sq. miles	0.00156	Days	Seconds	86400
Cubic feet	Cu. Meter	0.02832	Feet	Meters	0.3048
Cubic feet	Gallons	7.4805	Gallons	Cu feet	0.13368
Cubic feet	Liters	28.316	Hectares	Acres	2.4711
cfs	Gal/min	448.83	Miles	Meters	1609.34
cfs	MGD	0.64632	Mg/l	ppm	1
Cubic meters	Gallons	264.173	$\mu\text{g/l} * \text{cfs}$	Gm/day	2.45

CONTENTS

TMDL INFORMATION PAGE.....	v
EXECUTIVE SUMMARY	vi
INTRODUCTION	8
1.1 Background	8
1.2 Applicable Water Body Segment Use.....	9
TMDL ENDPOINT AND WATER QUALITY ASSESSMENT	11
2.1 Selection of a TMDL Endpoint and Critical Condition	11
2.1.1 Discussion of the Geometric Mean Test	11
2.1.2 Discussion of the 10% Test.....	12
2.1.3 Discussion of Combining the Tests.....	12
2.1.4 Discussion of the Targeted Endpoint	14
2.1.5 Discussion of the Critical Condition for Fecal Coliform	14
2.2 Discussion of Instream Water Quality	14
2.2.1 Inventory of Available Water Quality Monitoring Data.....	14
2.2.2 Analysis of Instream Water Quality Monitoring Data	15
SOURCE ASSESSMENT	18
3.1 Assessment of Point Sources.....	18
3.2 Assessment of Nonpoint Sources	19
3.2.1 Beef and Dairy Cattle	20
3.2.2 Land Application of Hog Manure	21
3.2.3 Land Application of Poultry Litter.....	21
3.2.4 Failing Septic Systems	21
3.2.5 Urban / Developed Areas	22
3.2.6 Wildlife.....	22
3.2.7 Other Direct Inputs.....	22
MASS BALANCE PROCEDURE	23
4.1 Modeling Framework Selection	23
4.2 Calculation of the Allowable Load	23
4.3 Calculation of the Percent Reduction.....	24
ALLOCATION.....	25
5.1 Wasteload Allocations.....	25
5.2 Load Allocations	25
5.3 Incorporation of a Margin of Safety (MOS)	25
5.4 Calculation of the TMDL.....	26
5.5 Seasonality.....	27
5.6 Reasonable Assurance	27
CONCLUSION.....	28
6.1 Future Monitoring	28
6.2 Public Participation	28

DEFINITIONS..... 29

ABBREVIATIONS 32

REFERENCES 33

FIGURES

Figure 1. Location of the Big Sunflower River Watershed vi

Figure 2. Big Sunflower River and Little Sunflower River Segments 8

Figure 3. Big Sunflower River and Little Sunflower River with Water Quality Gages..... 9

Figure 4. Theoretical Capacity Curve..... 13

Figure 5. 10% Test Curve for Station FTN50, Summer 2006..... 16

Figure 6. 10% Test Curve for Station FTN51, Summer 2003 17

Figure 7. Big Sunflower River Watershed NPDES Permitted Facilities..... 18

Figure 8. Land Use Distribution Map for the Big Sunflower River Watershed..... 20

TABLES

Table 1. Theoretical Capacity Data Set 13

Table 2. Fecal Coliform Data reported in the Little Sunflower River, Station FTN50 14

Table 3. Fecal Coliform Data reported in the Little Sunflower River, Station FTN50 14

Table 4. Fecal Coliform Data reported in the Little Sunflower River, Station FTN50 15

Table 5. Fecal Coliform Data reported in the Big Sunflower River, Station FTN51 15

Table 6. Fecal Coliform Data reported in the Big Sunflower River, Station FTN51 15

Table 7. Point Sources in Big Sunflower River Watershed..... 19

Table 8. Land Use Distribution (acres)..... 19

Table 9. TMDL Summary for Segments 951011 and 950912 (counts per day)..... 26

TMDL INFORMATION PAGE

Listing Information

Name	ID	County	HUC	Cause
Big Sunflower River	951011	Coahoma and Sunflower	08030207	Pathogens
Near Hopson from confluence with Harris Bayou to confluence with Black Bayou				
Little Sunflower River	950912	Coahoma	08030207	Pathogens
At Clarksdale from confluence with Sandy Branch to the Big Sunflower River				

Water Quality Standard

Parameter	Beneficial use	Water Quality Criteria
Fecal Coliform	Secondary Contact	<p>May - October: Fecal coliform colony counts are not to exceed a geometric mean of 200 per 100ml based on a minimum of 5 samples taken over a 30-day period with a minimum of 12 hours between individual samples, nor shall the samples examined during a 30-day period exceed 400 per 100ml more than 10% of the time.</p> <p>November – April: Fecal coliform colony counts shall not exceed a geometric mean of 2000 per 100 ml based on a minimum of 5 samples taken over a 30-day period with no less than 12 hours between individual samples, nor shall the samples examined during a 30-day period exceed 4000 per 100 ml more than 10% of the time.</p>

Total Maximum Daily Load for the Big Sunflower River

WLA (counts per day)	LA (counts per day)	MOS (counts per day)	Total TMDL (counts per day)	TMDL Percent Reduction
5.04E+10	2.79E+12	3.16E+11	3.16E+12	54%

Total Maximum Daily Load for the Little Sunflower River Watershed

WLA (counts per day)	LA (counts per day)	MOS (counts per day)	Total TMDL (counts per day)	TMDL Percent Reduction
0.00E+00	6.50E+10	7.22E+09	7.22E+09	92.5%

EXECUTIVE SUMMARY

A pathogen TMDL has been developed for water body segments 951011 and 950912 of the Big Sunflower River and the Little Sunflower River respectively, which are on the Mississippi 2008 Section 303(d) List of Impaired Water Bodies. The recent monitoring data collected for these segments were assessed based on the 2007 *State of Mississippi Water Quality Criteria for Intrastate, Interstate, and Coastal Waters*. MDEQ selected fecal coliform as an indicator organism for pathogenic bacteria.

The impaired segment of the Big Sunflower River flows in a southerly direction from the confluence with Harris Bayou to the confluence with Black Bayou. The impaired segment of the Little Sunflower River flows in a south-easterly directions from the confluence with Sandy Branch to the Big Sunflower River. Due to data limitations, complex dynamic modeling was inappropriate for performing the TMDL allocations for this study, as were load duration curves. Therefore, a mass balance approach was used to develop the TMDL for both segments.

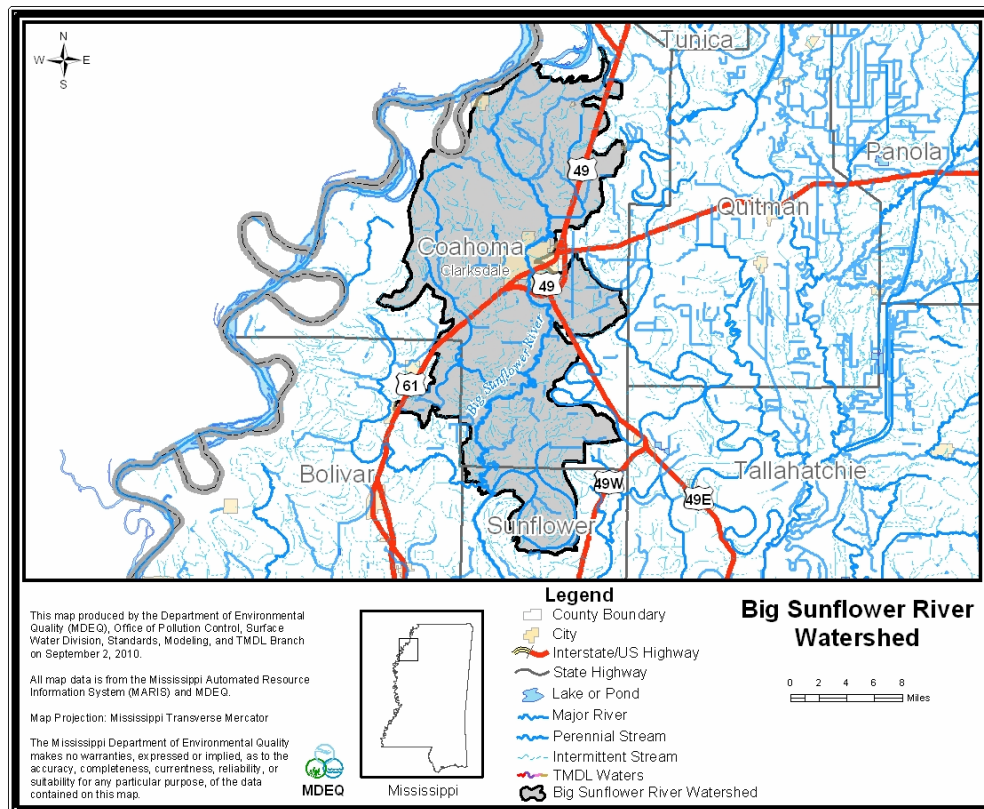


Figure 1. Location of the Big Sunflower River Watershed

Although fecal coliform loadings from point and nonpoint sources in the watershed were not explicitly represented with a model, a source assessment was conducted for the Big Sunflower River Watershed. Nonpoint sources of fecal coliform may include wildlife, livestock, and urban/developed areas. Also, considered were the nonpoint sources such as failing septic systems and other direct inputs into the Big Sunflower River. There are 11 NPDES permitted discharges included as point sources in the wasteload allocation (WLA) for the Big Sunflower River, there are no NPDES permitted discharges included as point sources in the WLA for the Little Sunflower River.

The seasonal variations in hydrology, climatic conditions, and watershed activities are represented through the use of a seasonal TMDL based on average flows and seasonal monitoring. Although, violations occurred during both seasons, the critical period for the TMDL was determined to be in the summer since a greater reduction was needed to achieve water quality standards. The estimated summer reduction of fecal coliform bacteria is 54% for the Big Sunflower River and 92% for the Little Sunflower River. An explicit 10% margin of safety (MOS) was used in the mass balance method to account for uncertainty.

INTRODUCTION

1.1 Background

The identification of water bodies not meeting their designated use and the development of total maximum daily loads (TMDLs) for those water bodies is required by Section 303(d) of the Clean Water Act and the Environmental Protection Agency’s (EPA) Water Quality Planning and Management Regulations (40 CFR part 130). The TMDL process is designed to restore and maintain the quality of those impaired water bodies through the establishment of pollutant specific allowable loads. The pollutant of concern for this TMDL is pathogens as indicated by fecal coliform. Fecal coliform bacteria are used as indicator organisms because they are readily identifiable and indicate the possible presence of other pathogenic organisms in the water body. The TMDL process can be used to establish water quality based controls to reduce pollution from nonpoint sources, maintain permit requirements for point sources, and restore and maintain the quality of water resources.

A TMDL has been developed for segments 951011 and 950912 of the Big Sunflower River and the Little Sunflower River respectively. Segment 951011 of the Big Sunflower River is approximately 30 miles long from the confluence with Harris Bayou to the confluence with Black Bayou. Segment 950912 is approximately 5 miles long from the confluence with Sandy Branch to the Big Sunflower River. Both segments, shown in Figure 2, are listed on the Draft Mississippi 2010 Section 303(d) List of Impaired Water Bodies for pathogens. There are 11 NPDES permitted wastewater treatment facilities in the Big Sunflower River Watershed, none of which are located in the Little Sunflower River Watershed. The fecal coliform data that were recently collected for this segment are listed in Section 2.2.

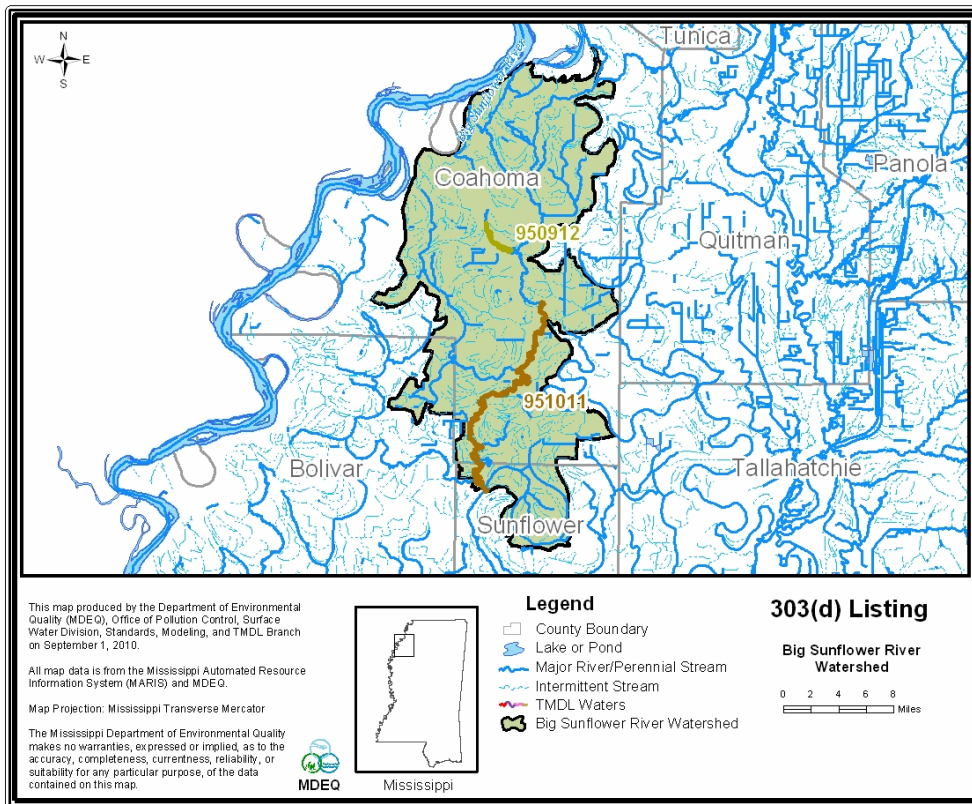


Figure 2. Big Sunflower River and Little Sunflower River Segments

The mass balance method is an applicable method for TMDL development when the water quality data are collected in a manner consistent with the water quality standards (5 samples collected within a 30 day period). The mass balance method requires water quality data and flow data. The water body segments are shown in Figure 3. The TMDLs for the segments were developed using the mass balance method with water quality data from Stations FTN50 and FTN51. The average flows of 542 cfs for the Big Sunflower River and 12.4 cfs for the Little Sunflower River were found in the National Hydrology Dataset.

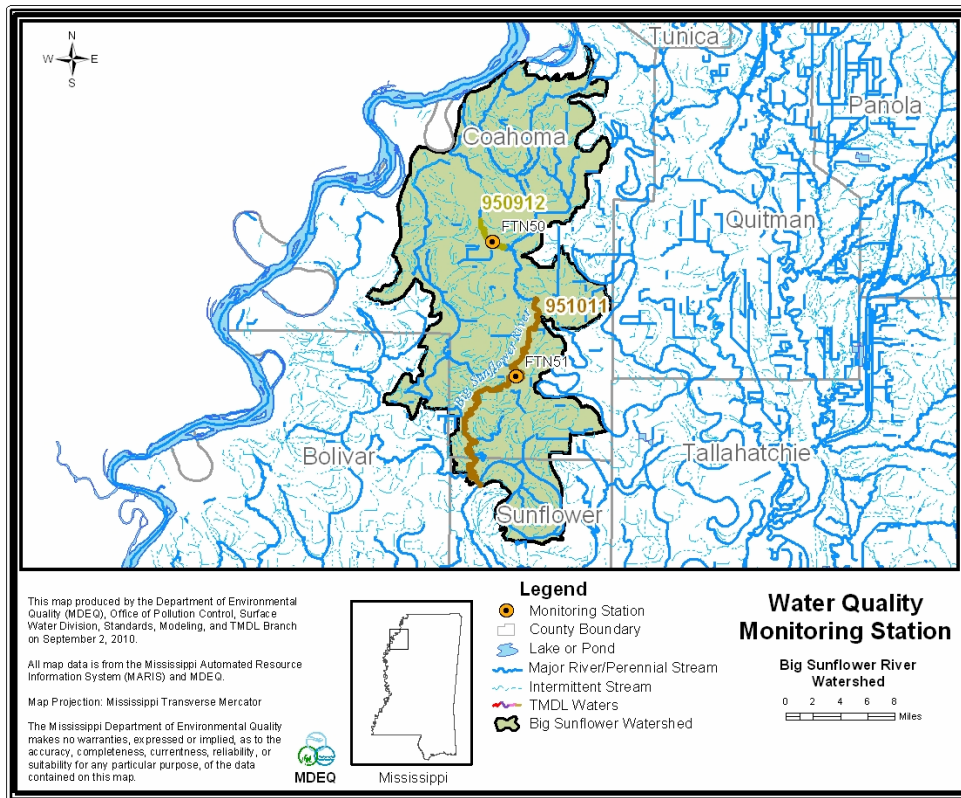


Figure 3. Big Sunflower River and Little Sunflower River with Water Quality Gages

The Big Sunflower River and Little Sunflower River segments are in Hydrologic Unit Code (HUC) 08030207 in the Mississippi delta. The entire watershed is approximately 221,123 acres (345 square miles) and is primarily rural. Cropland is the dominant land use within the watershed.

1.2 Applicable Water Body Segment Use

The water use classification for the listed segments of the Big Sunflower River and the Little Sunflower River, as established by the State of Mississippi in the *Water Quality Criteria for Intrastate, Interstate and Coastal Waters* regulation, is Fish and Wildlife Support. The designated beneficial uses for the Big Sunflower River and the Little Sunflower River are Secondary Contact and Aquatic Life Support. Secondary Contact is defined as incidental contact with the water during activities such as wading, fishing, and boating, that are not likely to result in full body immersion.

1.3 Applicable Water Body Segment Standard

The water quality standard applicable to the use of the water body and the pollutant of concern is defined in the *State of Mississippi Water Quality Criteria for Intrastate, Interstate, and Coastal Waters* (MDEQ, 2007). The standard for fecal coliform is different for summer and winter for a secondary contact use, where summer is defined as the months of May through October, and winter is defined as the months of November through April. For the summer months the fecal coliform colony counts shall not exceed a geometric mean of 200 per 100 ml, based on a minimum of 5 samples taken over a 30-day period with no less than 12 hours between individual samples, nor shall the samples examined during a 30-day period exceed 400 per 100 ml more than 10% of the time. For the winter months, the maximum allowable level of fecal coliform shall not exceed a geometric mean of 2000 colonies per 100 ml, based on a minimum of 5 samples taken over a 30-day period with no less than 12 hours between individual samples, nor shall the samples examined during a 30-day period exceed 4000 per 100 ml more than 10% of the time. This water quality standard was used to assess the data to determine impairment in the water body.

TMDL ENDPOINT AND WATER QUALITY ASSESSMENT

2.1 Selection of a TMDL Endpoint and Critical Condition

One of the major components of a TMDL is the establishment of instream numeric endpoints, which are used to evaluate the attainment of acceptable water quality. Instream numeric endpoints, therefore, represent the water quality goals that are to be achieved by implementing the load and wasteload reductions specified in the TMDL. The endpoints allow for a comparison between observed instream conditions and conditions that are expected to restore designated uses. MDEQ's fecal coliform standard allows for a statistical review of any fecal coliform data set. There are two tests, the geometric mean test and the 10% test, that the data set must pass to indicate acceptable water quality.

The geometric mean test states that for the summer the fecal coliform colony count shall not exceed a geometric mean of 200 per 100 ml based on a minimum of 5 samples taken over a 30-day period with no less than 12 hours between individual samples and for the winter the fecal coliform colony count shall not exceed a geometric mean of 2000 per 100 ml based on a minimum of 5 samples taken over a 30-day period with no less than 12 hours between individual samples. The 10% test states that for the summer the samples examined during a 30-day period shall not exceed a count of 400 per 100 ml more than 10% of the time and for the winter the samples examined during a 30-day period shall not exceed a count of 4000 per 100 ml more than 10% of the time.

2.1.1 Discussion of the Geometric Mean Test

The level of fecal coliform found in a natural water body varies greatly depending on several independent factors such as temperature, flow, or distance from the source. This variability is accentuated by the standard laboratory analysis method used to measure fecal coliform levels in the water. The membrane filtration (MF) method uses a direct count of bacteria colonies on a nutrient medium to estimate the fecal level. The fecal coliform colony count per 100 ml is determined using an equation that incorporates the dilution and volume to the sample filtered.

The geometric mean test is used to dampen the impact of the large numbers when there are smaller numbers in the data set. The geometric mean is calculated by multiplying all of the data values together and taking the root of that number based on the number of samples in the data set.

$$G = \sqrt[n]{s1 * s2 * s3 * s4 * s5 * sn}$$

The water quality standard requires a minimum of 5 samples be used to determine the geometric mean. MDEQ routinely gathers 6 samples within a 30-day period in case there is a problem with one of the samples. It is conceivable that there would be more samples available in an intensive survey, but typically each data set will contain 6 samples therefore, n would equal 6. For the data set to indicate no impairment, the result must be less than or equal to 200 in summer and 2000 in winter.

2.1.2 Discussion of the 10% Test

The 10% test looks at the data set as representing the 30 days for 100% of the time. The data points are sorted from the lowest to the highest and each value then represents a point on the curve from 0% to 100% or from day 1 to day 30. The lowest value becomes the 1st data point and the highest data point becomes the nth data point. The water quality standard requires that 90% of the time, the counts of fecal coliform in the stream be less than or equal to 400 counts per 100 ml in summer and 4000 counts per 100 ml in winter.

By calculating a concentration of fecal coliform for every percentile point based on the data set, it is possible to determine a curve that represents the percentile ranking of the data set. Once the 90th percentile of the data set has been determined, it may be compared to the standard of 400 counts per 100 ml. If the 90th percentile of the data is greater than 400, then the data violates the criteria and the stream will be considered impaired. This can be used not only to assess actual water quality data, but also computer generated daily average model results. Actual water quality data will typically have 5 or 6 values in the data set, and computer generated model results would have 30 daily values.

2.1.3 Discussion of Combining the Tests

MDEQ determined a theoretical capacity data set that meets both portions of the water quality standard and is indicative of possible water quality conditions. This theoretical capacity data set is shown in Table 1. The theoretical capacity data set was constructed to represent the maximum amount of fecal coliform per day that will still meet both portions of the water quality standard. The theoretical capacity data set was then plotted, generating a theoretical capacity curve. This curve can be seen in Figure 4. The integral of the theoretical capacity curve is used for mass balance TMDL calculations. By multiplying the integral of the theoretical capacity curve by the flow in a given water body, the mass balance TMDL can be calculated.

When actual data violate both portions of the standard, and the data are plotted in a similar way, the resulting curve can be compared to the theoretical capacity curve to determine the percent reduction of fecal coliform necessary for the water body to meet both portions of the water quality standard, the geometric mean test and the 10% test.

Table 1. Theoretical Capacity Data Set

Fecal Coliform (counts/100ml)	Percentile Ranking
37.82	0.0%
52.75	3.4%
65.68	6.9%
79.61	10.3%
93.54	13.8%
107.47	17.2%
121.4	20.7%
135.33	24.1%
149.26	27.6%
163.19	31.0%
177.12	34.5%
191.05	37.9%
204.98	41.4%
218.91	44.8%
232.84	48.3%
246.77	52.7%
260.7	55.2%
274.63	58.6%
288.56	62.1%
302.49	65.5%
316.42	69.0%
330.35	72.4%
344.28	75.9%
358.21	79.3%
372.14	82.8%
386.07	86.2%
400	89.7%
400	93.1%
400	96.6%
400	100.0%

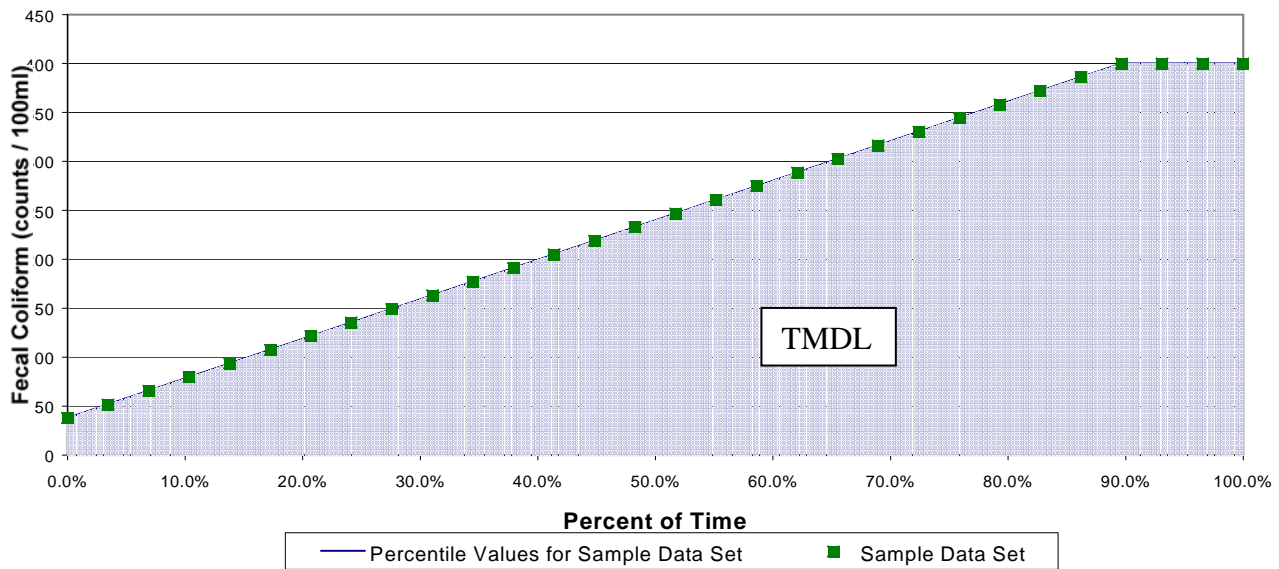


Figure 4. Theoretical Capacity Curve

2.1.4 Discussion of the Targeted Endpoint

While the endpoint of a TMDL calculation is similar to a standard for a pollutant, the endpoint is not the standard. For a mass balance TMDL, the endpoint selected is both portions of the standard, that is the geometric mean test and the 10% test. Meeting the geometric mean test and applying the 10% test to the data sets applies both parts of the standard to an actual data set or to a considered computer generated data set. It is therefore appropriate to select both portions of the standard as the targeted endpoint for the mass balance TMDL.

2.1.5 Discussion of the Critical Condition for Fecal Coliform

Critical conditions for waters impaired by nonpoint sources generally occur during periods of wet weather and high surface runoff. However, critical conditions for point source dominated systems generally occur during periods of low flow, low dilution conditions. Therefore, an examination of the data is needed to determine the critical 30-day period to be used for the TMDL.

2.2 Discussion of Instream Water Quality

Monitoring was performed in a manner consistent with the water quality standards. At least 5 samples were collected in a 30-day period, at Stations FTN50 and FTN51. The collection dates range from 2003 through 2006.

2.2.1 Inventory of Available Water Quality Monitoring Data

The data collected at Stations FTN50 and FTN51 are provided in Tables 2 through 6.

**Table 2. Fecal Coliform Data reported in the Little Sunflower River, Station FTN50
Winter 2003**

Date	Fecal Coliform (counts/100ml)	Geometric Mean	Geometric Mean Test Violation	90 th Percentile	10% Test Violation
3/21/2003	118	169.6	No, geometric mean is <2000	1061.5	No, 90 th percentile is <4000
3/25/2003	44				
3/27/2003	1833				
3/31/2003	98				
4/2/2003	88				
4/4/2003	290				

**Table 3. Fecal Coliform Data reported in the Little Sunflower River, Station FTN50
Summer 2003**

Date	Fecal Coliform (counts/100ml)	Geometric Mean	Geometric Mean Test Violation	90 th Percentile	10% Test Violation
8/18/2003	580	617	Yes, geometric mean is >200	4700	Yes, 90 th percentile is >400
8/20/2003	40				
8/22/2003	3400				
8/25/2003	1060				
8/27/2003	110				
9/3/2003	6000				

**Table 4. Fecal Coliform Data reported in the Little Sunflower River, Station FTN50
Summer 2006**

Date	Fecal Coliform (counts/100ml)	Geometric Mean	Geometric Mean Test Violation	90 th Percentile	10% Test Violation
7/17/2006	1100	1783.1	Yes, geometric mean is >200	10150	Yes, 90 th percentile is >400
7/19/2006	16000				
7/21/2006	4300				
7/24/2006	1433				
7/28/2006	390				
7/31/2006	760				

**Table 5. Fecal Coliform Data reported in the Big Sunflower River, Station FTN51
Winter 2003**

Date	Fecal Coliform (counts/100ml)	Geometric Mean	Geometric Mean Test Violation	90 th Percentile	10% Test Violation
3/20/2003	5000	1876.4	No, geometric mean is <2000	4050	Yes, 90 th percentile is >4000
3/24/2003	1967				
3/26/2003	1433				
3/28/2003	3100				
4/1/2003	1033				
4/3/2003	967				

**Table 6. Fecal Coliform Data reported in the Big Sunflower River, Station FTN51
Summer 2003**

Date	Fecal Coliform (counts/100ml)	Geometric Mean	Geometric Mean Test Violation	90 th Percentile	10% Test Violation
8/18/2003	40	260.5	Yes, geometric mean is >200	1400	Yes, 90 th percentile is >400
8/20/2003	110				
8/22/2003	1300				
8/25/2003	260				
8/27/2003	140				
9/3/2003	1500				

2.2.2 Analysis of Instream Water Quality Monitoring Data

The data collected shows violations of both portions of the standard for the summer of 2003 at both stations and the summer of 2006 at FTN50. The 2003 winter season violated the 90th percentile portion of the water quality standard. Each season that violated the standard was given a percent reduction. For both of these water body segments, the summer season consistently violated the water quality standard and was selected as the critical season. At station FTN50, the summer of 2006 data set presented the greatest reduction for the Little Sunflower River. At station FTN51, the summer of 2003 data set presented the greatest percent reduction for the Big Sunflower River. Figures 5 and 6 display the 10% test curve for station FTN50 during the summer 2006 monitoring period and station FTN51 during the summer 2003 monitoring period respectively.

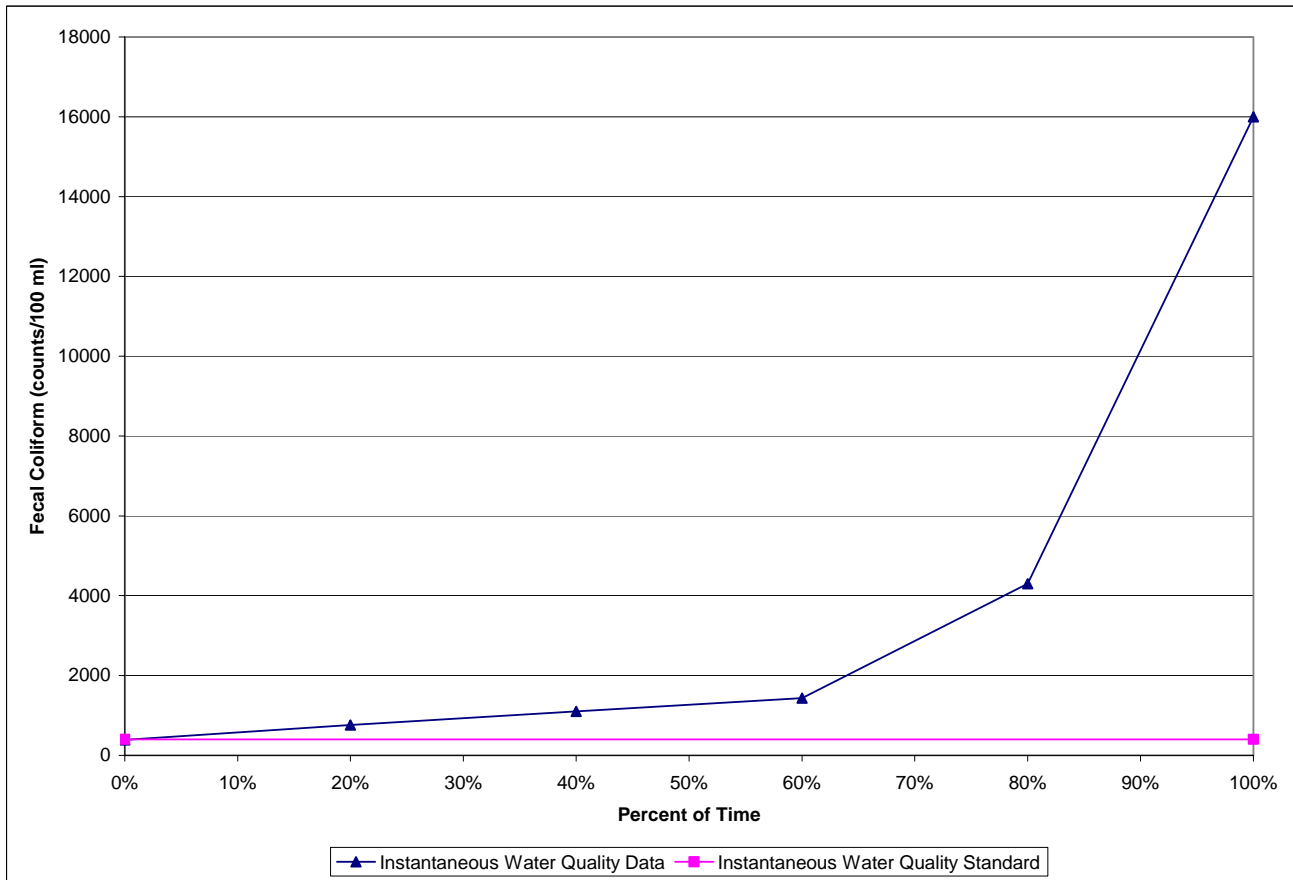


Figure 5. 10% Test Curve for Station FTN50, Summer 2006

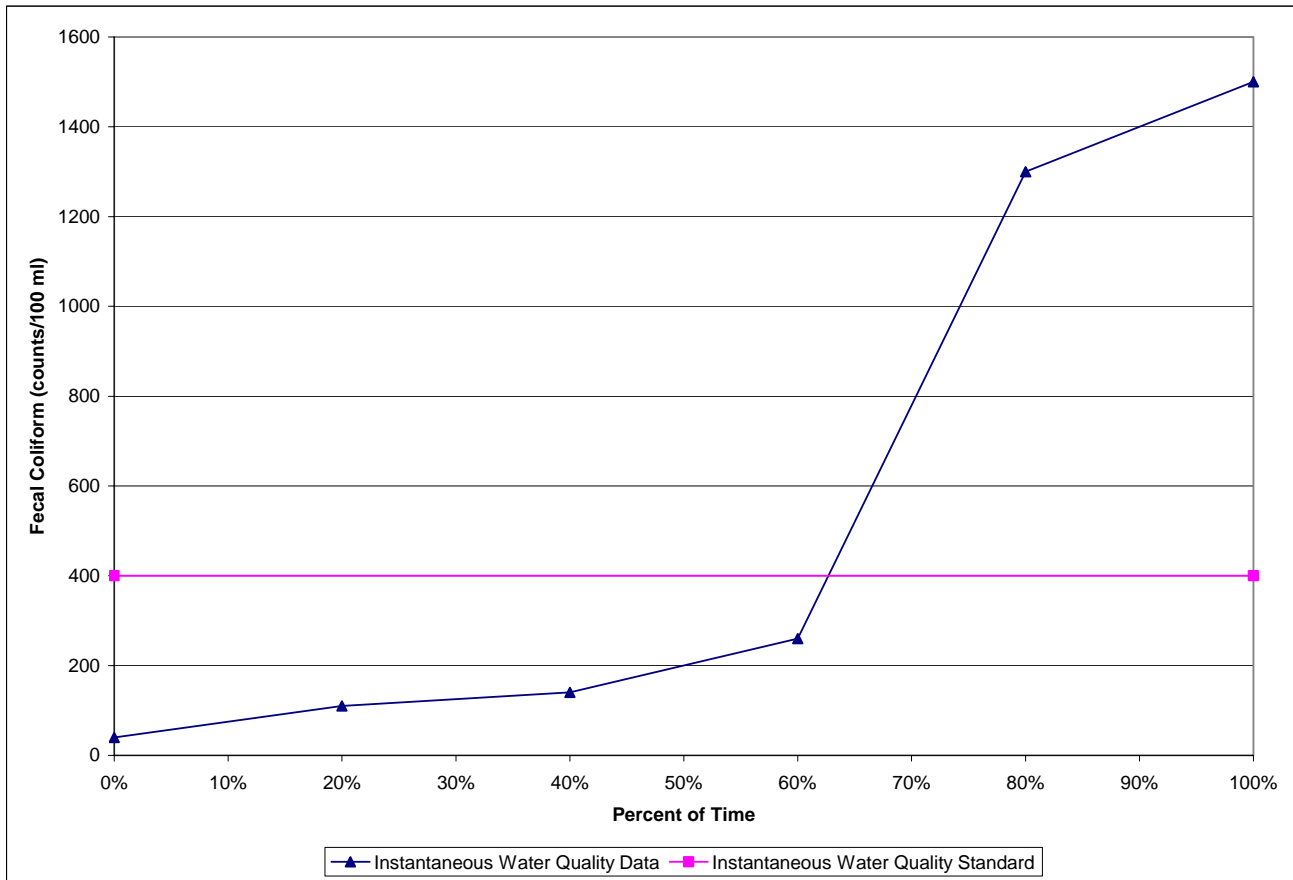


Figure 6. 10% Test Curve for Station FTN51, Summer 2003

SOURCE ASSESSMENT

The TMDL evaluation summarized in this report examined all known potential fecal coliform sources in the Big Sunflower River Watershed. In evaluation of the sources, loads were characterized by the best available information, monitoring data, literature values, and local management activities. This section documents the available information and interpretation for the analysis.

3.1 Assessment of Point Sources

Point sources of fecal coliform bacteria have their greatest potential impact on water quality during periods of low flow. Thus, an evaluation of point sources that discharge fecal coliform bacteria was necessary in order to quantify the degree of impairment present during low flow periods. During the monitoring periods, 11 NPDES permitted facilities were in the watershed. The 11 facilities are shown in Figure 7 and listed in Table 7.

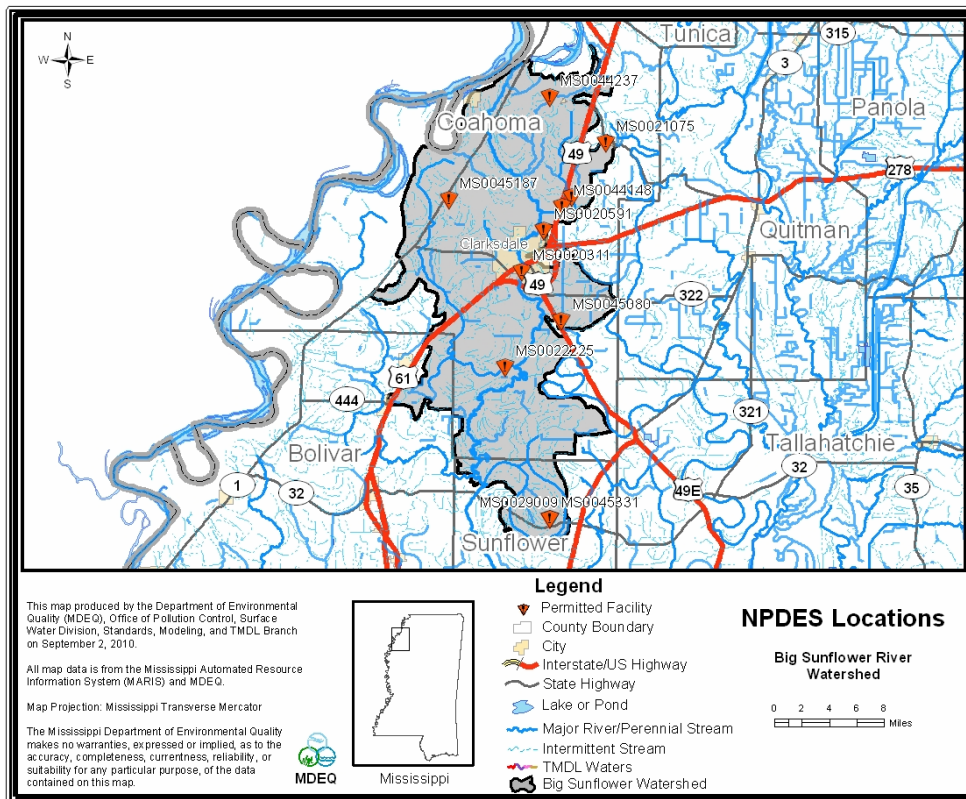


Figure 7. Big Sunflower River Watershed NPDES Permitted Facilities

Table 7. Point Sources in Big Sunflower River Watershed

NPDES	Permit Number
Clarksdale POTW	MS0020311
Coahoma POTW	MS0044237
Farrell Utility District, Farrell POTW	MS0045187
Jonestown POTW	MS0021075
Lurand Utility District	MS0045080
Lyon POTW	MS0020591
Mississippi State Penitentiary POTW, Number 1	MS0029009
Mississippi State Penitentiary POTW, Number 2	MS0045331
Mascot Planting Company	MS0022225
Green Acres Water Association, Lane Acres Subdivision	MS0032166
Berryhill Trailer Park	MS0044148

3.2 Assessment of Nonpoint Sources

There are many potential nonpoint sources of fecal coliform bacteria for the Big Sunflower River and the Little Sunflower River, including:

- ◆ Beef and dairy cattle
- ◆ Failing septic systems
- ◆ Urban/ developed areas
- ◆ Wildlife
- ◆ Other direct inputs

The approximately 221,123 acre drainage area of the Big Sunflower River contains many different land use types, including urban, forest, cropland, pasture, scrub/barren, water, and wetlands. The areas directly surrounding the impaired segments are comprised of cropland and wetland. The land use distribution for the watershed is provided in Table 8 and displayed in Figure 8. The land use for the Big Sunflower River Watershed is gathered from the National Land Cover Database (NLCD). The land use categories were grouped into the following uses: urban, forest, cropland, pasture, scrub/ barren, water, and wetlands.

Table 8. Land Use Distribution (acres)

	Water	Urban	Forest	Scrub/Barren	Pasture	Cropland	Wetland
Area (acres)	3,526.52	17,962.39	1,050.82	44.26	1,223.39	178,461.41	18,854.19
% Area	1.6%	8.1%	0.5%	0.0%	0.6%	80.7%	8.5%

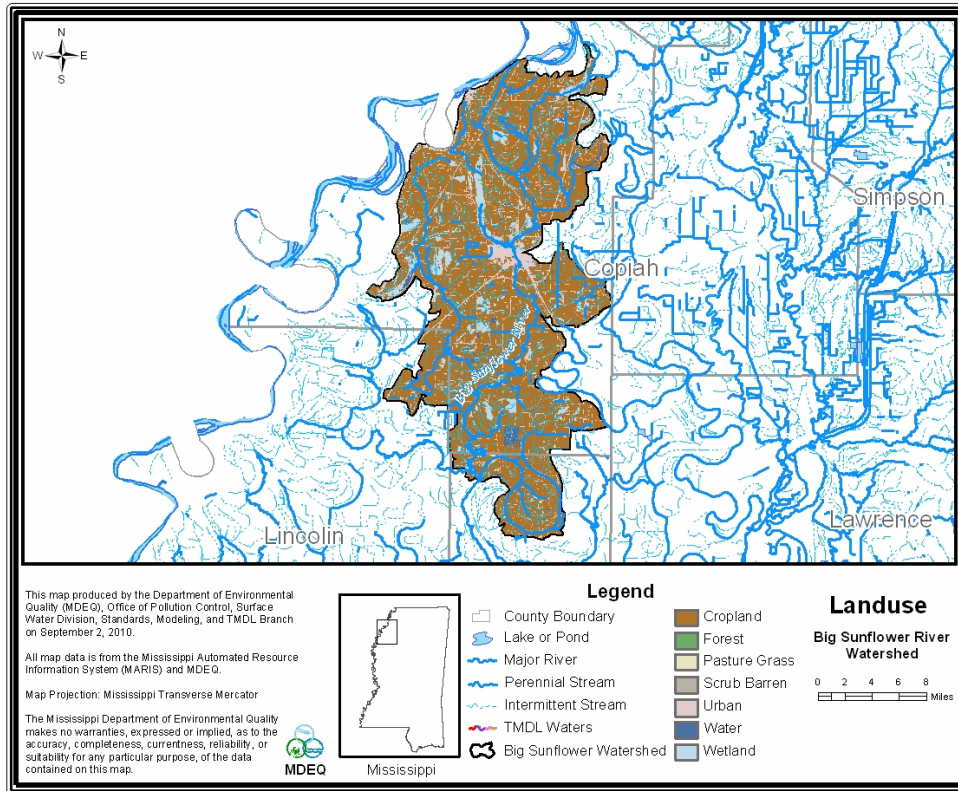


Figure 8. Land Use Distribution Map for the Big Sunflower River Watershed

3.2.1 Beef and Dairy Cattle

Grazing cattle deposit manure on pastureland where it is available for wash-off and delivery to receiving water bodies. Beef cattle have access to pastureland for grazing all of the time. For dairy cattle, the dry cattle and heifers have access to pastureland for grazing all of the time. Manure produced by grazing beef and dairy cows is directly deposited onto pastureland and is available for wash off.

Large dairy farms, over 200 head, typically confine the milking herd at all times. Small dairy farms confine the lactating cattle for a limited time during the day for milking and feeding. The manure collected during confinement is applied to the available pastureland in the watershed. Application rates of dairy cow manure to pastureland vary monthly according to management practices currently used in this area.

The *2007 Census of Agriculture* (USDA, 2009) produced by the National Agriculture Statistics Service (NASS) was used to estimate the number of cattle in the watershed. The cattle are primarily beef cattle, heifers, steers, and bulls. The impaired Big Sunflower River and Little Sunflower River segments are located in Coahoma and Sunflower Counties. In Coahoma County, there are 14 farms with a total of 1,259 head of cattle. None of these farms are large (> 500 head of cattle) and only one has over 200 head of cattle. Coahoma County had a 58% increase in the cow population since the 2002 census. In Sunflower County, there are 18 farms with a total of 999 head of cattle. One farm has greater than 500 head of cattle and all the remaining farms had less than 100 head of cattle. There has been a 19% decrease in the cow population in Sunflower County since the 2002 census.

3.2.2 Land Application of Hog Manure

Processed manure from confined hog operations is usually collected in lagoons and routinely applied to pastureland according to the management practices used in the area. The amount of the manure application is determined by the nitrogen uptake of the plant being sprayed. The frequency is determined by rain events so that the waste is not sprayed on saturated ground or just prior to a rain event to minimize runoff. Another factor in the application of the manure is pumping the lagoons often enough to avoid a lagoon overflow. Also, the waste is not land applied during the winter months when there is no forage or crop being grown. This manure is a potential contributor of bacteria to receiving water bodies due to runoff produced during a rain event.

Data from the *2007 Census of Agriculture* (USDA, 2009) produced by the NASS indicate there is one hog farm in Coahoma County and that farm has between 100 and 200 hogs. In Sunflower County, there are 15 hog farms, one of which has over 1,000 hogs. The remaining hog farms in Sunflower County have less than 50 hogs each.

3.2.3 Land Application of Poultry Litter

Predominantly, two kinds of chickens are raised on farms in the Yazoo River Basin, broilers and layers. For the broiler chickens, the amount of growth time from when the chicken is born to when it is sold off the farm is approximately 48 days or 1.6 months. Broiler chickens are confined in poultry houses all of the time. Typically, the dry waste accumulated in the poultry houses is “de-caked” between flocks unless a disease situation warrants clean-out before the change of flocks. During “de-caking”, approximately the top two inches of litter is removed. Every year or two, the middle third of the poultry house is removed and the remaining litter is spread evenly in the house. The majority of the litter is used as a fertilizer on hay and row crops and may be used in areas of the state other than the location of the poultry houses. The litter is applied in the spring, summer, and early fall and rates are determined by a phosphorous index.

Layer chickens are confined at all times and remain on farms for ten months or longer. Large scale layer operations collect the chicken waste in a lagoon and periodic spray applies the waste to corn fields. The application rates vary monthly from the spring through the early fall. There is one poultry farm in Coahoma County. This farm raises layers and has less than 100 birds. In Sunflower County, there are three poultry farms that raise layers and pullets. One farm has between 20,000 and 50,000 layers, the other two have less than 50 birds each.

3.2.4 Failing Septic Systems

Septic systems have a potential to deliver fecal coliform bacteria loads to surface waters due to malfunctions, failures, and direct pipe discharges. Properly operating septic systems treat and dispose of wastewater through a series of underground field lines. The water is applied through these lines into a rock substrate, thence into underground absorption. The systems can fail when the field lines are broken, or when the underground substrate is clogged or flooded. A failing septic system’s discharge can reach the surface, where it becomes available for wash-off into the stream. Another potential problem is a direct bypass from the system to a stream. In an effort to keep the water off the land, pipes are occasionally placed from the septic tank or the field lines directly to the creek.

Another consideration is the use of individual onsite wastewater treatment plants. These treatment

systems are in wide use in Mississippi. They can adequately treat wastewater when properly maintained. However, these systems may not receive the maintenance needed for proper, long-term operation. These systems require some sort of disinfection to properly operate. When this expense is ignored, the water does not receive adequate disinfection prior to release.

Septic systems have an impact on nonpoint source fecal coliform impairment in the Yazoo River Basin. The best management practices needed to reduce this pollutant load need to prioritize eliminating septic tank failures and improving maintenance and proper use of individual onsite treatment systems.

3.2.5 Urban / Developed Areas

Land classified as urban in the Big Sunflower Watershed is primarily representative of transportation corridors and does not represent land use activities associated with urban/ developed areas that would contribute fecal coliform, with the exception of the town of Clarksdale.

3.2.6 Wildlife

Wildlife present in the Big Sunflower River Watershed contributes to fecal coliform bacteria on the land surface which is then available for wash-off and delivery to receiving water bodies. Some form of wildlife may be present on all land uses within the watershed. Also, wildlife is present throughout the year.

3.2.7 Other Direct Inputs

Other direct inputs of fecal coliform bacteria to water bodies in the Big Sunflower River Watershed could include illicit discharges, human recreation, leaking sewer collection lines, and access of both domestic and wild animals to the stream.

MASS BALANCE PROCEDURE

Establishing the relationship between the instream water quality target and the source loading is a critical component of TMDL development. It allows for the evaluation of management options that will achieve the desired source load reductions. Ideally, the linkage will be supported by monitoring data that allow the TMDL developer to associate certain water body responses to flow and loading conditions. In this section, the selection of the modeling tools, setup, and model application are discussed.

4.1 Modeling Framework Selection

A mass balance approach was used to calculate the TMDL for the impaired segment in the watershed. This method of analysis was selected because data limitations precluded the use of more complex methods. The mass balance approach is suitable for this TMDL.

4.2 Calculation of the Allowable Load

The mass balance approach utilizes the conservation of mass principle. Loads can be calculated by multiplying the fecal coliform concentration in the water body by the flow. The principle of the conservation of mass allows for the addition and subtraction of those loads to determine the appropriate numbers necessary for the TMDL. The loads can be calculated using the following relationship:

$$\begin{aligned} \text{Load}(\text{counts per day}) &= \text{AverageDailyCapacity} \left(\frac{\text{day} \cdot \text{counts}}{100 \text{ ml}} \right) \times \text{Flow (cfs)} * \text{ConversionFactor} \\ \text{when Conversion Factor} &= \left(\frac{28316.8 \text{ ml}}{\text{ft}^3} \right) \times \left(\frac{100 \text{ ml}}{100 \text{ ml}} \right) \times \left(\frac{60 \text{ s}}{1 \text{ min}} \right) \times \left(\frac{60 \text{ min}}{1 \text{ hr}} \right) \times \left(\frac{24 \text{ hr}}{1 \text{ day}} \right) \\ &= 2.45E + 07 \left(\frac{100 \text{ ml} \cdot \text{s}}{\text{ft}^3 \cdot \text{day}} \right) \end{aligned}$$

The first step in calculating the average daily capacity is to calculate the theoretical 30 day capacity, as shown in the equation below, by taking the integral of the theoretical capacity curve shown in Figure 4.

$$\int_0^{26.91} [13.47x + 37.82] dx + \int_{26.91}^{30} 400 dx = \mathbf{7129.4} \text{ (day * counts/100 ml)}$$

The average daily capacity is then computed by dividing the theoretical 30 day capacity by 30.

$$\text{Average Daily Capacity} = \left(\frac{\mathbf{7129.4} \text{ (day * counts/100 ml)}}{30} \right) = 237.65 \text{ (day * counts/100 ml)}$$

The average annual flow was found in the National Hydrograph Dataset which is 542 cfs for the Big Sunflower River and 12.4 cfs for the Little Sunflower River.

4.3 Calculation of the Percent Reduction

For the calculation of the percent reduction, the area under the 10% Test Curve for each season that violates both portions of the standard (Section 2.2.2) is computed and then compared to the area under the Theoretical Capacity Curve, Figure 4. The necessary percent reduction based on the observed data for each season is then calculated using the equation below. This method of calculating the percent reduction allows the data set to be compared to both portions of the water quality standard at the same time. Thus, the calculated percent reduction represents the reduction needed in order for the data set to meet both portions of the water quality standard.

$$\text{Percent Reduction} = \left(1 - \frac{\text{Theoretical Capacity Curve Area}}{10\% \text{ Test Curve Area}} \right) * 100$$

For a season which only violates one portion of the standard, the percent reduction will only be based on the violating portion. The percent reduction calculation for a data set that violates the geometric mean portion of the standard follows.

$$\text{Percent Reduction} = \left(1 - \frac{\text{Geometric Mean of 200 mg/L}}{\text{Actual Geometric Mean of Violating Data Set}} \right) * 100$$

The same could be done for a data set that only violates the 10% of the time portion of the standard.

ALLOCATION

The allocation for this TMDL includes a wasteload allocation (WLA) for point sources, a load allocation (LA) for nonpoint sources, and a margin of safety (MOS).

5.1 Wasteload Allocations

There are 11 NPDES point sources in the Big Sunflower River Watershed. These point sources are included in the WLA for segment 951011 of the Big Sunflower River. Segment 950912 of the Little Sunflower River does not currently have any NPDES point sources that discharge in its watershed. Future permits will be considered in accordance with Mississippi's *Wastewater Regulations for National Pollutant Discharge Elimination System (NPDES) Permits, Underground Injection Control (UIC) Permits, State Permits, Water Quality Based Effluent Limitations and Water Quality Certification*.

5.2 Load Allocations

The load allocation for segments 951011 and 950912 is calculated using the water quality criteria and the average annual flow. The load allocation is assumed to represent nonpoint sources as described in Section 3.2. In calculating the LA component, the total TMDL for the water body is reduced by a 10% MOS and the WLA component. For the TMDL for segment 951011, the load is based on the average daily capacity and the average annual flow of 542 cfs. The resulting LA is estimated to be 2.79E+12 counts per day.

$$LA = 0.9 * 237.65(\text{day} * \text{counts}/100\text{ml}) * 542(\text{cfs}) * 2.45\text{E}+07[(100\text{ml} * \text{s})/(\text{ft}^3 * \text{day})] - 5.04\text{E}+10 \text{ WLA}$$

$$LA = 2.79\text{E}+12 \text{ (counts per day)}$$

For the TMDL for segment 950912, the load is based on the average daily capacity and the average annual flow of 12.4 cfs. The resulting LA is estimated to be 6.50E+10 counts per day.

$$LA = 0.9 * 237.65(\text{day} * \text{counts}/100\text{ml}) * 12.4(\text{cfs}) * 2.45\text{E}+07[(100\text{ml} * \text{s})/(\text{ft}^3 * \text{day})] - 0 \text{ WLA}$$

$$LA = 6.50\text{E}+10 \text{ (counts per day)}$$

5.3 Incorporation of a Margin of Safety (MOS)

The two types of MOS development are to implicitly incorporate the MOS using conservative assumptions or to explicitly specify a portion of the total TMDL as the MOS. For the impaired segments, reducing the TMDL by 10% explicitly specifies the MOS. For segment 951011, assuming the average flow, the resulting load attributed to the MOS is 3.16E+11 counts per day.

$$\text{MOS} = 0.1 * 237.65(\text{day} * \text{counts}/100\text{ml}) * 542 \text{ (cfs)} * 2.45\text{E}+07[(100\text{ml} * \text{s})/(\text{ft}^3 * \text{day})]$$

$$\text{MOS} = 3.16\text{E}+11 \text{ (counts per day)}$$

For segment 950912, assuming the average flow, the resulting load attributed to the MOS is 7.22E+09 counts per day.

$$\text{MOS} = 0.1 * 237.65(\text{day} * \text{counts}/100\text{ml}) * 12.4 \text{ (cfs)} * 2.45\text{E}+07[(100\text{ml} * \text{s})/(\text{ft}^3 * \text{day})]$$

$$\text{MOS} = 7.22\text{E}+09 \text{ (counts per day)}$$

5.4 Calculation of the TMDL

The TMDL for the impaired segments is calculated based on the following equation:

$$\text{TMDL} = \text{WLA} + \text{LA} + \text{MOS}$$

where WLA is the Wasteload Allocation, LA is the Load Allocation, and MOS is the Margin of Safety.

WLA = NPDES Permitted Facilities

LA = Surface Runoff + Other Direct Inputs

MOS = 10% explicit

The TMDLs for the impaired segments were calculated based on the average flow of the water body, and the average daily capacity. The necessary summer percent reduction of fecal coliform to segment 951011 is 54% and to segment 950912 is 92.5%. These are based on the most critical data set for each segment.

For Segment 951011:

$$\text{TMDL} = 237.65(\text{day} * \text{counts}/100\text{ml}) * 542 \text{ (cfs)} * 2.45\text{E}+07[(100\text{ml} * \text{s})/(\text{ft}^3 * \text{day})]$$

$$\text{TMDL} = 3.16\text{E}+12 \text{ (counts per day)}$$

For Segment 950912:

$$\text{TMDL} = 237.65(\text{day} * \text{counts}/100\text{ml}) * 12.4 \text{ (cfs)} * 2.45\text{E}+07[(100\text{ml} * \text{s})/(\text{ft}^3 * \text{day})]$$

$$\text{TMDL} = 7.22\text{E}+10 \text{ (counts per day)}$$

Table 9. TMDL Summary for Segments 951011 and 950912 (counts per day)

	951011	950912
WLA	5.04E+10	0.00E+00
LA	2.79E+12	6.50E+10
MOS	3.16E+11	7.22E+09
TMDL = WLA + LA + MOS	3.16E+12	7.22E+10

5.5 Seasonality

For many streams in the state, fecal coliform limits vary according to the seasons. This stream is designated for the use of secondary contact. For this use, the fecal coliform standard is seasonal. The criteria for the most critical season, which is the summer, was used as the target for this TMDL.

5.6 Reasonable Assurance

This component of TMDL development does not apply to this TMDL Report. There is no WLA reduction request based on promised LA components and reductions.

CONCLUSION

The TMDL will not impact future NPDES Permits as long as the effluent is disinfected to meet water quality standards for fecal coliform. All permits that currently do not disinfect will be required to do so by their next permitting cycle. MDEQ will not approve any NPDES Permit application that does not plan to meet water quality standards for fecal coliform. Education projects that teach best management practices should be used as a tool for reducing nonpoint source contributions. These projects may be funded by CWA Section 319 Nonpoint Source (NPS) Grants.

6.1 Future Monitoring

MDEQ has adopted the Basin Approach to Water Quality Management, a plan that divides Mississippi's major drainage basins into four groups. During each year long cycle, MDEQ resources for water quality monitoring will be focused on one of the basin groups. During the next monitoring phase in the Yazoo River Basin, the Big Sunflower River and the Little Sunflower River may receive additional monitoring to identify any change in water quality. MDEQ produced guidance for future Section 319 project funding will encourage NPS restoration projects that attempt to address TMDL related issues within Section 303(d)/TMDL watersheds in Mississippi.

6.2 Public Participation

This TMDL will be published for a 30-day public notice. During this time, the public will be notified by publication in the statewide newspaper. The public will be given an opportunity to review the TMDLs and submit comments. MDEQ also distributes all TMDLs at the beginning of the public notice to those members of the public who have requested to be included on a TMDL mailing list. Anyone wishing to become a member of the TMDL mailing list should contact Greg Jackson at gjackson@deq.state.ms.us.

All comments should be directed to Greg Jackson at gjackson@deq.state.ms.us or Greg Jackson, MDEQ, PO Box 2261, Jackson, MS 39225. All comments received during the public notice period and at any public hearings become a part of the record of this TMDL and will be considered in the submission of this TMDL to EPA Region 4 for final approval.

DEFINITIONS

Ambient stations: a network of fixed monitoring stations established for systematic water quality sampling at regular intervals, and for uniform parametric coverage over a long-term period.

Assimilative capacity: the capacity of a natural body of water to receive wastewaters or toxic materials without deleterious effects and without damage to aquatic life or humans who use the water.

Background: the condition of waters in the absence of man-induced alterations based on the best scientific information available to MDEQ. The establishment of natural background for an altered water body may be based upon a similar, unaltered or least impaired, water body or on historical pre-alteration data.

Calibrated model: a model in which reaction rates and inputs are significantly based on actual measurements using data from surveys on the receiving water body.

Critical Condition: hydrologic and atmospheric conditions in which the pollutants causing impairment of a water body have their greatest potential for adverse effects.

Daily discharge: the discharge of a pollutant measured during a 24-hour period that reasonably represents the day for purposes of sampling. For pollutants with limitations expressed in units of mass, the daily discharge is calculated as the total mass of the pollutant discharged over the day. For pollutants with limitations expressed in other units of measurement, the daily discharge is calculated as the average measurement of the pollutant over the day.

Designated Uses: (1) those uses specified in the water quality standards for each water body or segment whether or not they are being attained. (2) those water uses identified in state water quality standards which must be achieved and maintained as required under the Clean Water Act. Uses can include public water supply, recreation, etc.

Discharge monitoring report (DMR): the EPA uniform national form, including any subsequent additions, revisions, or modifications for the reporting of self-monitoring results by permittees.

Effluent: wastewater – treated or untreated – that flows out of a treatment plant or industrial outfall. Generally refers to wastes discharged into surface waters.

Effluent limitation: (1) any restriction established by a State or the Administrator on quantities, rates, and concentrations of chemical, physical, biological, and other constituents which are discharged from point sources into navigable waters, the waters of the contiguous zone, or the ocean, including schedules of compliance. (2) restrictions established by a State or EPA on quantities, rates, and concentrations in wastewater discharges.

Effluent standard: any effluent standard or limitation, which may include a prohibition of any discharge, established or proposed to be established for any toxic pollutant under section 307(a) of the Act.

Fecal Coliform Bacteria: (1) those organisms associated with the intestines of warm-blooded animals that are commonly used to indicate the presence of fecal material and the potential presence of organisms capable of causing human disease. (2) bacteria found in the intestinal tracts of mammals. Their presence in water or sludge is an indicator of pollution and possible contamination by pathogens.

Geometric mean: the n th root of the production of n factors. A 30-day geometric mean is the 30th root of the product of 30 numbers.

Impaired Water Body: any water body that does not attain water quality standards due to an individual pollutant, multiple pollutants, pollution, or an unknown cause of impairment.

Land Surface Runoff: water that flows into the receiving stream after application by rainfall or irrigation. It is a transport method for nonpoint source pollution from the land surface to the receiving stream.

Fecal Coliform TMDL for the Big Sunflower River and the Little Sunflower River

Load allocation (LA): the portion of a receiving water's loading capacity that is attributed either to one of its existing or future nonpoint sources of pollution or to natural background sources. Load allocations are best estimates of the loading, which may range from reasonably accurate estimates to gross allotments, depending on the availability of data and appropriate techniques for predicting the loading. Wherever possible, natural and nonpoint source loads should be distinguished.

Loading: the introduction of waste into a waste management unit but not necessarily to complete capacity.

Mass Balance: a concept based on a fundamental law of physical science (conservation of mass) which says that matter can not be created or destroyed. It is used to calculate all input and output streams of a given substance in a system.

Model: a quantitative or mathematical representation or computer simulation which attempts to describe the characteristics or relationships of physical events.

National pollutant discharge elimination system (NPDES): the national program for issuing, modifying, revoking and reissuing, terminating, monitoring and enforcing permits, and imposing and enforcing pretreatment requirements, under section 307, 402, 318, and 405 of the Clean Water Act.

Nonpoint Source: the pollution sources which generally are not controlled by establishing effluent limitations under section 301, 302, and 402 of the Clean Water Act. Nonpoint source pollutants are not traceable to a discrete identifiable origin, but generally result from land runoff, precipitation, drainage, or seepage.

Outfall: the point where an effluent is discharges into receiving waters

Point Source: a stationery location or fixed facility from which pollutants are discharges or emitted. Also, any single identifiable source of pollution, e.g., a pipe, ditch, ship, ore pit, factory smokestack.

Pollution: generally, the presence of matter or energy whose nature, location or quantity produces undesired environmental effects. Under the Clean Water Act, for example, the term is defined as the man-made or man-induced alteration of the physical, biological, and radiological integrity of water.

Publicly Owned Treatment Works (POTW): the treatment works treating domestic sewage that is owned by a municipality or State.

Regression: a relationship of y and x in a function of $y = f(x)$, where: y is the expected value of an independent random variable x. The parameters in the function $f(x)$ are determined by the method of least squares. When $f(x)$ is a linear function of x, the term linear regression is used.

Regression Coefficient: a quantity that describes the slope and intercept of a regression line.

Scientific Notation (Exponential Notation): mathematical method in which very large numbers or very small numbers are expressed in a more concise form. The notation is based on powers of ten. Numbers in scientific notation are expressed as the following: $4.16 \times 10^{(+b)}$ and $4.16 \times 10^{(-b)}$ [same as $4.16E4$ or $4.16E-4$]. In this case, b is always a positive, real number. The $10^{(+b)}$ tells us that the decimal point is b places to the right of where it is shown. The $10^{(-b)}$ tells us that the decimal point is b places to the left of where it is shown.

For example: $2.7 \times 10^4 = 2.7E+4 = 27000$ and $2.7 \times 10^{-4} = 2.7E-4 = 0.00027$.

Sigma (Σ): shorthand way to express taking the sum of a series of numbers. For example, the sum or total of three amounts 24, 123, 16, (d_1, d_2, d_3) respectively could be shown as:

$$\sum_{i=1}^3 d_i = d_1 + d_2 + d_3 = 24 + 123 + 16 = 163$$

Fecal Coliform TMDL for the Big Sunflower River and the Little Sunflower River

Total Maximum Daily Load or TMDL: (1) the calculated maximum permissible pollutant loading introduced to a water body such that any additional loading will produce a violation of water quality standards. (2) the sum of the individual wasteload allocations and load allocations. A margin of safety is included with the two types of allocations so that any additional loading, regardless of source, would not produce a violation of water quality standards.

Waste: (1) useless, unwanted or discarded material resulting from (agricultural, commercial, community and industrial) activities. Wastes include solids, liquids, and gases. (2) any liquid resulting from industrial, commercial, mining, or agricultural operations, or from community activities that is discarded or is being accumulated, stored, or physically, chemically, or biologically treated prior to being discarded or recycled.

Wasteload allocation (WLA): (1) the portion of a receiving water's loading capacity that is allocated to one of its existing or future point sources of pollution. WLAs constitute a type of water quality based effluent limitation. (2) the portion of a receiving water's total maximum daily load that is allocated to one of its existing or future point source of pollution. (3) the maximum load of pollutants each discharger of waste is allowed to release into a particular waterway. Discharge limits are usually required for each specific water quality criterion being, or expected to be, violated. The portion of a stream's total assimilative capacity assigned to an individual discharge.

Water Quality Standards: State-adopted and EPA-approved regulations mandated by the Clean Water Act and specified in 40 CFR 131 that describe the designated uses of a water body, the numeric and narrative water quality criteria designed to protect those uses, and an antidegradation statement to protect existing levels of water quality. Standards are designed to safeguard the public health and welfare, enhance the quality of water and serve the purposes of the Clean Water Act.

Water quality criteria: numeric water quality values and narrative statements which are derived to protect designated uses. Numeric criteria are scientifically-derived ambient concentrations developed by EPA or States for various pollutants of concern to protect human health and aquatic life. Narrative criteria are statements that describe the desired water quality goal. Ambient waters that meet applicable water quality criteria are considered to support their designated uses.

Waters of the State: all waters within the jurisdiction of this State, including all streams, lakes, ponds, wetlands, impounding reservoirs, marshes, watercourses, waterways, wells, springs, irrigation systems, drainage systems, and all other bodies or accumulations of water, surface and underground, natural or artificial, situated wholly or partly within or bordering upon the State, and such coastal waters as are within the jurisdiction of the State, except lakes, ponds, or other surface waters which are wholly landlocked and privately owned, and which are not regulated under the Federal Clean Water Act (33 U.S.C.1252 et seq.).

Watershed: (1) the land area that drains (contributes runoff) into a stream. (2) the land area that drains into a stream; the watershed for a major river may encompass a number of smaller watersheds that ultimately combine at a common delivery point.

ABBREVIATIONS

BMP	Best Management Practice
CAFO	Concentrated Animal Feeding Operation
CWA	Clean Water Act
DMR	Discharge Monitoring Report
EPA	Environmental Protection Agency
GIS	Geographic Information System
HCR	Hydrograph Controlled Release
HUC	Hydrologic Unit Code
LA	Load Allocation
MARIS	Mississippi Automated Resource Information System
MDEQ	Mississippi Department of Environmental Quality
MOS	Margin of Safety
NRCS	National Resource Conservation Service
NPDES	National Pollution Discharge Elimination System
UNT	Unnamed Tributary
USGS	United States Geological Survey
WLA	Wasteload Allocation

REFERENCES

- Horner, 1992. Water Quality Criteria/Pollutant Loading Estimation/Treatment Effectiveness Estimation. In R.W. Beck and Associates. Covington Master Drainage Plan. King County Surface Water Management Division, Seattle, WA.
- Horsley & Whitten, Inc. 1996. Identification and Evaluation of Nutrient Bacterial Loadings to Maquoit Bay, Brunswick, and Freeport, Maine. Casco Bay Estuary Project.
- Lee, C.C.. 1998. *Environmental Engineering Dictionary*. 3rd Edition. Government Institutes, Inc., Rockville, Maryland.
- MDEQ. 2006. *Mississippi 2004 Water Quality Assessment, Pursuant to Section 305(b) of the Clean Water Act*. Office of Pollution Control.
- MDEQ. 2006. *Mississippi List of Water Bodies, Pursuant to Section 303(d) of the Clean Water Act*. Office of Pollution Control.
- MDEQ. 2007. *State of Mississippi Water Quality Criteria for Intrastate, Interstate, and Coastal Waters*. Office of Pollution Control.
- MDEQ. 2001. *Wastewater Regulations for National Pollutant Discharge Elimination System (NPDES) Permits, Underground Injection Control (UIC) Permits, State Permits, Water Quality Based Effluent Limitations and Water Quality Certification*. Office of Pollution Control.
- Metcalf and Eddy. 1991. *Wastewater Engineering: Treatment, Disposal, Reuse*. 3rd Edition. McGraw-Hill, Inc., New York.
- NCSU, 1994. *Livestock Manure Production and Characterization in North Carolina*, North Carolina Cooperative Extension Service, North Carolina State University (NCSU) College of Agriculture and Life Sciences, Raleigh, January 1994.
- Sheely. 2002. *Load Duration Curves: Development and Application to Data Analysis for Streams in the Yazoo River Basin, MS*. Special Project, Summer 2002, Jackson Engineering Graduate Program.
- USDA. 2009. *2007 Census of Agriculture*. U.S. Department of Agriculture, National Agricultural Statistics Service, Washington, D.C.
- USEPA. 1986. *Ambient Water Quality Criteria for Bacteria - 1986*. EPA440/5-84-002. Office of Water, Washington, DC.