

Total Maximum Daily Load for Sediment/Siltation and Organic Enrichment/Low Dissolved Oxygen

Bee Lake

Holmes County, Mississippi

Prepared for:

Mississippi Department of Environmental Quality

Office of Pollution Control

TMDL/WLA Section/Water Quality Assessment Branch



Prepared by:



Tetra Tech, Inc.
10306 Eaton Place
Fairfax, VA 22030

FOREWORD

This report has been prepared in accordance with the schedule contained within the federal consent decree dated December 22, 1998. The report contains two Total Maximum Daily Loads (TMDLs) for water body segments found on Mississippi's 1996 Section 303(d) List of Impaired Water bodies. Because of the accelerated schedule required by the consent decree, many of these TMDLs have been prepared out of sequence with the State's rotating basin approach. The implementation of the TMDLs contained herein will be prioritized within Mississippi's rotating basin approach.

The amount and quality of the data on which this report is based are limited. As additional information becomes available, the TMDLs may be updated. Such additional information may include water quality and quantity data, changes in pollutant loadings, or changes in land use within the watershed. In some cases, additional water quality data may indicate that no impairment exists.

Prefixes for Fractions and Multiples of SI Units

Fraction	Prefix	Symbol	Multiple	Prefix	Symbol
10 ⁻¹	deci	D	10	deka	da
10 ⁻²	centi	C	10 ²	hecto	h
10 ⁻³	milli	M	10 ³	kilo	k
10 ⁻⁶	micro	μ	10 ⁶	mega	M
10 ⁻⁹	nano	N	10 ⁹	giga	G
10 ⁻¹²	pico	P	10 ¹²	tera	T
10 ⁻¹⁵	femto	F	10 ¹⁵	peta	P
10 ⁻¹⁸	atto	A	10 ¹⁸	exa	E

Conversion Factors

TO CONVERT FROM	To	Multiply by	TO CONVERT FROM	To	Multiply by
Acres	Sq. miles	0.0015625	Days	Seconds	86400
Cubic feet	Cu meter	0.028316847	Feet	Meters	0.3048
Cubic feet	Gallons	7.4805195	Gallons	Cu feet	0.133680555
Cubic feet	Liters	28.316847	Hectares	Acres	2.4710538
Cubic feet per second	Gallions per minute	448.83117	Miles	Meters	1609.344
Cubic feet per second	Million gallions per day	0.6463168	Milligrams per liter	Parts per million	1
Cubic meters	Gallons	264.17205	Micrograms per liter times cubic feet per second	Grams per day	2.45

Table of Contents

TMDL Summary.....	vi
Executive Summary	vii
1.0 Problem Understanding	1
1.1 Lake Description	1
1.2 303(d) Listed Water bodies.....	2
1.3 Water Quality Standards and Beneficial Uses	4
1.4 Watershed Description.....	4
1.4.1 Topography	7
1.4.2 Soil Type	7
1.4.3 Land Use	8
1.5 Climate Characteristics	9
1.6 Socioeconomic Characteristics	10
1.7 Threatened or Endangered Species Within the Watershed.....	10
2.0 Data Summary	11
2.1 Data Inventory	11
2.2 Monitoring Data Assessment of Bee Lake	12
3.0 Source Assessment.....	14
3.1 Point Sources	14
3.2 Nonpoint Source Data.....	15
3.2.1 Agricultural Sources	15
3.2.2 Aquaculture.....	15
3.2.3 Septic Systems	16
3.2.4 Groundwater	16
3.2.5 Background Sources	17
4.0 Technical Approach.....	18
4.1 Technical Approach Selection	18
4.2 Modeling	19
4.2.1 Sedimentation	19
4.2.2 Organic Enrichment/Low DO and Nutrients	20
4.2.3 Modeling Assumptions	21
4.2.4 Limitations	22
4.2.5 Recommendations.....	23
5.0 TMDL Development.....	25
5.1 TMDL Water Quality Endpoints	25
5.1.1 Sediment/Siltation.....	25
5.1.2 Organic Enrichment/Low DO and Nutrients	25
5.2 Critical Condition and Seasonality	26
5.2.1 Sediment/Siltation.....	27
5.2.2 Organic Enrichment/Low DO and Nutrients	27
5.3 Sediment Loading Analysis	29

5.4 TMDL Allocations of Sediment 29
5.5 TMDL Allocations of TBOD_u..... 31
5.6 Margin of Safety 31
5.7 Reasonable Assurance 32
5.8 Public Participation..... 32
5.9 Future Monitoring..... 32
5.10 Conclusion 32
Bibliography 34
Definitions..... 37
Abbreviations..... 41

APPENDIX-A-Watershed Model and Siltation Analysis for Bee Lake Watershed

APPENDIX-B-Bee Lake Water Quality Model

Tables

Table ES-1. TMDL for TBOD_u for Bee Lake..... ix
Table ES-2. TMDL for Sedimentation Rate of 0.07 cm/year for Bee Lake ix
Table ES-3. TMDL for Sedimentation Rate of 0.04 cm/year for Bee Lake..... ix
Table 1-1. Morphometric and Hydraulic Characteristics of Bee Lake 2
Table 1-2. 303(d) Listing 2
Table 1-3. Relevant Water Quality Objectives 4
Table 1-4. Soil Types 8
Table 1-5. Land Use..... 9
Table 2-1. Available Geographic or Location Information 11
Table 2-2. Available Monitoring Data..... 12
Table 2-3. Available Water Quality Monitoring Data 12
Table 2-4. Available DO and Temperature Data 13
Table 3-1. Regional Housing Characteristics 16
Table 5-1. Load Reduction Scenario - Sedimentation Rate of 0.07 cm/year 30
Table 5-2. Load Reduction Scenario - Sedimentation Rate of 0.04 cm/year 30
Table 5-3. TMDL for Sedimentation Rate of 0.07 cm/year for Bee Lake..... 30
Table 5-4. TMDL for Sedimentation Rate of 0.04 cm/year for Bee Lake..... 31
Table 5-5. Percent Contribution of TBOD_u 31
Table 5-6. TMDL for TBOD_u for Bee Lake 31

Figures

Figure 1-1. Oxbow Lake Creation Process 2
Figure 1-2. Watershed Location 6
Figure 1-3. Digital Elevation Map 7
Figure 1-4. Soil Type 8
Figure 1-5. Mississippi Automated Resource Information System Land use 9
Figure 4-1. Daily Average DO in Bee Lake at Mid-Depth..... 21
Figure 5-1. Historic Precipitation 1985 – 2000 (Yazoo City). 28

Figure 5-2. Monthly Precipitation 1997-2000 (Yazoo City) 28
Figure 5-3. Estimated Life span for Scenarios..... 29

TMDL Summary

Total Maximum Daily Load (TMDL) for Sediment/Siltation, Nutrients, and Organic Enrichment/Low Dissolved Oxygen (DO) in Bee Lake MS361BLM1, Holmes, Mississippi

TMDL AT A GLANCE

<i>State:</i>	Mississippi
<i>County:</i>	Holmes County
<i>303(d) Listed Water body:</i>	Yes
<i>Year Listed:</i>	1996
<i>303 (d) List Segment ID:</i>	MS361BLM1 – Bee Lake
<i>HUC:</i>	08030206 – Yazoo River Basin
<i>Constituents Causing Impairment:</i>	Siltation, nutrients, and organic enrichment
<i>Source of Pollutants:</i>	Agriculture, Aquaculture, and Natural Background
<i>Data Source:</i>	Clean Lake Assessments
<i>Designated Uses:</i>	Aquatic Life Support
<i>Applicable Water Quality Standard:</i>	<i>Sediment:</i> Narrative water quality criteria <i>Organic Enrichment/Low DO:</i> General water quality criteria for dissolved oxygen: a daily average of 5.0 mg/L with an instantaneous minimum of not less than 4.0 mg/L.
<i>Water Quality Target:</i>	<i>Sedimentation/Siltation:</i> Average annual sediment sedimentation rate of 0.07 cm/year or 0.04 cm/year <i>Organic Enrichment/Low DO:</i> Daily Average DO of 5.0 mg/L
<i>Technical Approach:</i>	<i>Sedimentation/Siltation:</i> GWLF watershed model <i>Organic Enrichment/Low DO:</i> CE-QUAL-W2 receiving water model
<i>TMDL:</i>	<i>Sedimentation/Siltation:</i> 0.33 : 0.20 tons/acre/year <i>Organic Enrichment/Low DO:</i> 234 lbs/day of TBODu
<i>WLA:</i>	<i>Sedimentation/Siltation:</i> 0.33 :0.20 tons/acre/year <i>Organic Enrichment/Low DO:</i> 0 lbs/day of TBODu
<i>LA:</i>	<i>Sedimentation/Siltation:</i> 0.33 : 0.20 tons/acre/year <i>Organic Enrichment/Low DO:</i> 234 lbs/day of TBODu
<i>Margin of Safety:</i>	Implicit

Executive Summary

Bee Lake, located in Holmes County, Mississippi, is an oxbow lake formed by an abandoned meander of the Yazoo River. The Mississippi Department of Environmental Quality (MDEQ) has identified Bee Lake as not meeting its designated use of Aquatic Life Support. Water bodies that have been identified as not meeting their designated use are listed as impaired as required by Section 303(d) of the Clean Water Act and the Environmental Protection Agency's (EPA) Water Quality Planning and Management Regulations (40 CFR Part 130). The lake (water body MS361BLM1) is on the Mississippi Section 303(d) list as impaired due to sediment/siltation, organic enrichment/low DO, and nutrients. Mississippi does not have standards for allowable nutrient concentrations, so a Total Maximum Daily Load (TMDL) specifically for nutrients will not be developed. However, because elevated levels of nutrients may cause low levels of dissolved oxygen (DO), the TMDL developed for organic enrichment/low DO also addresses the potential impact of elevated nutrients in the water body.

Section 303(d) requires the development of TMDLs for those water bodies contained on the impaired waters list. A TMDL is the sum of the allowable amount of a single pollutant that a water body can receive from all contributing point and nonpoint sources and still meet water quality standards. The process is designed to restore and maintain the quality of those impaired water bodies through the establishment of pollutant-specific allowable loads. The water quality standard for Sedimentation/Siltation is narrative. The water quality standard for DO is a daily average of 5.0 mg/L, with an instantaneous minimum of not less than 4.0 mg/L.

To evaluate the relationship between the sources, their loading characteristics, and the resulting conditions in the lake, several analytical tools were used in combination. Assessments of the nonpoint source loading into the lake were developed for the Bee Lake watershed using the Generalized Watershed Loading Function (GWLF) computer program. GWLF provided estimates of nutrients and sediments transported to the lake for individual land use categories. The lake was evaluated using the CE-QUAL-W2 water quality simulation computer model to estimate the concentrations of DO and oxygen-consuming constituents. The lake was segmented into a total of 18 segments to represent the system.

Model results were evaluated for the period from 1997 to 2000, which presented a range of climatic conditions. The year 1997, which was a predominantly wet year, was identified to be the critical period for the TMDL, that is, reflective of the poorest water quality conditions in the lake. Model segment 9 was chosen as the location for evaluating the TMDL. This segment includes the sampling location where data were collected and it is assumed to be representative of the lake.

For this TMDL, the loadings of oxygen-demanding material are given in terms of total ultimate biochemical oxygen demand (TBODu). TBODu represents the oxygen consumed by microorganisms while stabilizing or degrading carbonaceous or nitrogenous

compounds under aerobic conditions. According to the model, no decrease in oxygen-demanding source loadings or TBOD_u coming from the watershed is needed to meet the prescribed DO criteria of a daily average of 5 mg/L. The target for sedimentation/siltation was selected as a range of values, from 0.07 cm/year to 0.04 cm/year. It should be noted, however, that the reductions specified in this TMDL report represent just one example of how pollutant loadings could be modified in order to improve water quality in Bee Lake. Watershed management scenarios other than those included in this report are possible. Little hydrological and water quality data are available for Bee Lake, and the management scenarios could be modified based on a reevaluation of the data and modeling if these data become available. At present, it is anticipated that some reductions of the current load can be achieved through a combination of land use and restoration practices such as erosion and sediment control practices, reduced tillage practices on croplands, forest management, and stream restoration.

The TMDLs for sedimentation/siltation have been expressed in terms of tons/acre/year. According to 40 CFR section 130.2 (i), TMDLs can be expressed in terms of mass per time, toxicity, or other appropriate measure. In this case, an “other appropriate measure” is used to express the TMDL as the tons of sediment that can be discharged from an acre of a subwatershed per year (tons/acre/year) and still attain the applicable water quality standard. This results in a range of acceptable reference yields of 0.33 to 0.20 tons/acre/year. For this TMDL, it is appropriate to apply the same target yield to permitted waste load allocation (WLA) and unpermitted load allocation (LA) watershed areas. For load TMDLs, the WLA and LA are summed to calculate the TMDL. Because this TMDL is expressed as a yield, as long as all activities, permitted or unpermitted, meet the same yield, the TMDL will be met, regardless of the relative load contribution.

Wet weather sources of sediment, which are discharged to a receiving water body as a result of the storm events, are considered to be the primary concern for this sediment TMDL. These wet weather sources can be broadly defined, for the purposes of this TMDL, into two categories: wet weather sources regulated by the National Pollutant Discharge Elimination System (NPDES) program, and wet weather sources *not* regulated by NPDES. Wet weather sources regulated by the NPDES program include industrial activities (which include certain construction activities), and discharges from Municipal Separate Storm Sewer Systems (MS4s). The wet weather NPDES-regulated sources are provided a wasteload allocation (WLA) in this TMDL, and all other wet weather sources of sediment (those not regulated by NPDES) are provided a Load Allocation (LA).

There are no municipal, industrial, or commercial facilities in the Bee Lake watershed with NPDES permits that are permitted for Total Suspended Solids (TSS). If present, it would not be appropriate to include these facilities since these sources provide negligible loadings of sediment to the receiving waters compared to wet weather sources (e.g., NPDES-regulated construction activities, MS4s, and nonpoint sources). Also, the TSS component of a NPDES-permitted facility is different from the pollutant addressed within this TMDL because the TSS component of the permitted discharges is generally composed more of organic material, and therefore, provides less direct impact on the

biologic integrity of a stream (through settling and accumulation) than would stream sedimentation due to soil erosion during wet weather events. The pollutant of concern for the sedimentation TMDL is sediment from land use runoff.

Any future WLAs provided to NPDES municipal and industrial permitted dischargers will be implemented through the state's NPDES permit program and are not included in this TMDL. The wet weather WLAs provided to the NPDES-regulated construction activities and MS4s will be implemented through Best Management Practices (BMPs) as specified in Mississippi's General Stormwater Permits for Small Construction, Construction, and Phase I and II MS4 permits, which can be found on the MDEQ Web site (www.deq.state.ms.us). It is not technically feasible to incorporate numeric sediment limits into permits for these activities and facilities at this time. LAs for nonpoint sources will be achieved through the voluntary application of BMPs. Properly designed and well-maintained BMPs are expected to lead to the attainment of the wet weather WLAs and LAs.

The TMDLs are presented in Tables ES-1, ES-2 and ES-3. The margin of safety (MOS) has been addressed through implicit assumptions.

Table ES-1. TMDL for TBODu for Bee Lake

Pollutant	WLA (lbs/day)	LA (lbs/day)	MOS (lbs/day)	TMDL (lbs/day)
CBODu	0	149	Implicit	149
NBODu	0	85	Implicit	85
TBODu	0	234	Implicit	234

Table ES-2. TMDL for Sedimentation Rate of 0.07 cm/year for Bee Lake

Pollutant	WLA (ton/acre/year)	LA (ton/acre/year)	MOS (ton/acre/year)	TMDL (ton/acre/year)
Sediment	0.33	0.33	Implicit	0.33

Table ES-3. TMDL for Sedimentation Rate of 0.04 cm/year for Bee Lake

Pollutant	WLA (ton/acre/year)	LA (ton/acre/year)	MOS (ton/acre/year)	TMDL (ton/acre/year)
Sediment	0.20	0.20	Implicit	0.20

1.0 Problem Understanding

The identification of water bodies not meeting their designated use and the development of total maximum daily loads (TMDLs) for those water bodies are required by Section 303(d) of the Clean Water Act and the Environmental Protection Agency's (EPA) Water Quality Planning and Management Regulations (40 CFR Part 130). A TMDL is the sum of the allowable amount of a single pollutant that a water body can receive from all contributing point and nonpoint sources and still meet water quality standards. The process is designed to restore and maintain the quality of those impaired water bodies through the establishment of pollutant-specific allowable loads.

The Water Quality Assessment Branch of the Mississippi Department of Environmental Quality (MDEQ) has identified Bee Lake as being impaired as reported in the Mississippi 1998 Section 303(d) List of Water bodies. The lake (water body MS361BLM1) is listed as impaired as a result of sediment/siltation, nutrients, and organic enrichment/low dissolved oxygen (DO).

This report presents both the approach undertaken to develop TMDLs for Bee Lake and a review of the potential causes of impairment and the required TMDL components.

1.1 Lake Description

Oxbow lakes are formed by a long, erosional process within a meandering stream. Meandering streams possess a sinuous channel with broadly looping curves that possess an unequal distribution of flow velocity. As a consequence of the unequal velocities, the outer bank is eroded and sediment deposition occurs along the opposite side of the channel. The net effect is that the meander migrates laterally. Over time the channel becomes so sinuous that the land separating the adjacent meanders becomes very narrow. During a flood, the stream will abandon its channel, cutting through the narrow strip of land, and flow the shorter distance (Monroe and Wincander, 1992). Sediment transported by the stream is deposited along the new stream bank at the site of the abandoned meander. Once the abandoned meander is completely isolated from the main channel, it becomes an oxbow lake. Over time, oxbow lakes naturally fill with sediment. . Figure 1-1 below demonstrates this process. Over time, oxbow lakes naturally fill with sediment.

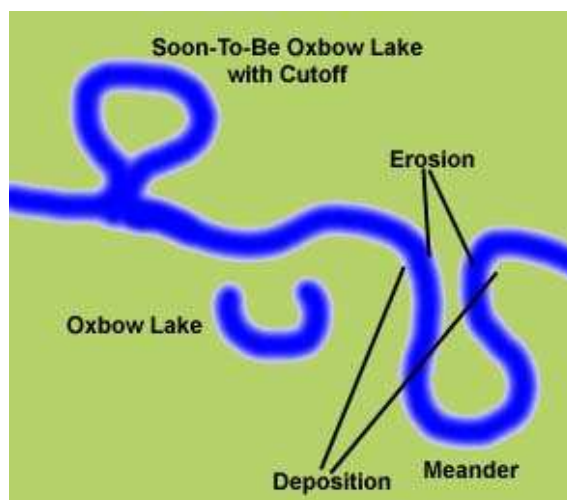


Figure 1-1. Oxbow Lake Creation Process

Bee Lake is an elongated oxbow lake that was formed on an abandoned arm of the Yazoo River. Inflow is through canals linked to Tchula Lake. Outflow is through a canal with a weir installed that is linked to Tchula Lake, near where Tchula Lake meets the Yazoo River, and through canals that discharge to the Yazoo River directly. Morphometric and hydraulic data for Bee Lake are shown in Table 1-1.

Table 1-1. Morphometric and Hydraulic Characteristics of Bee Lake

Parameter	Measured
Surface area (ac)	1,198
Drainage area (ac)	11,870 (18.5 mi ²)
Depth	
Mean Lake (m)	2.5 (8.2 ft)
Maximum Lake (m)	4 (13 ft)

Source: Surface area – GIS coverage
 Drainage area – topographic data
 Depth – Bathymetric Map

1.2 303(d) Listed Water bodies

Bee Lake (MS361BLM1) is listed on the State’s 303(d) list of impaired water bodies (Table 1-2).

Table 1-2. 303(d) Listing

Water body Name	Water body ID	Location	Beneficial Use	Impairment
Bee Lake	MS358BLM	Holmes	Aquatic Life Support	Sediment/Siltation Nutrients, and Organic Enrichment/Low DO

Excessive sedimentation from anthropogenic sources is a common problem that can impact water bodies in a number of ways. In the Mississippi Valley, suspended sediment and turbid conditions caused by suspended sediment are a primary water quality concern

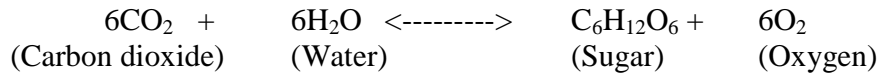
(MDEQ, 1999). Suspended sediment can impact lake and stream biota in various ways. Deposited sediments reduce habitat complexity by filling in pools, riffle areas, and the interstitial spaces used by aquatic invertebrates. Elevated turbidity reduces the light penetration necessary for photosynthesis in aquatic plants, reduces the feeding efficiency of visual predators and filter feeders, and lowers the respiration capacity in aquatic invertebrates by clogging gill surfaces. In addition, other contaminants such as nutrients and pesticides can be transported to lakes and streams during runoff events while attached to sediment particles.

DO has historically been used as the constituent that measures or indicates the overall quality of surface water. DO analysis measures the amount of gaseous oxygen dissolved in an aqueous solution, which enters the water by diffusion from the surrounding air, by aeration (rapid movement), and as a waste product of photosynthesis. Adequate DO is essential for good water quality and is a necessary element to all forms of life. Decreases in the DO concentrations can cause changes in the types and numbers of aquatic macroinvertebrates that live in a water ecosystem. As the DO levels decrease, pollution-intolerant organisms are replaced by pollution-tolerant worms and fly larvae and there is a decline in the number of species that cannot tolerate decreases in DO (Ricklefs, 1990).

Oxygen is used by plants and animals for respiration. Aerobic bacteria consume oxygen during the process of decomposition. When organic matter and nutrients such as animal waste, fertilizer, or improperly treated wastewater enter a body of water, they are used by the bacteria within the streambed and the algae in the water column (Ricklefs, 1990; Wetzel, 1983). Algae and bacteria use the organic matter and nutrients for growth. The DO concentration decreases as the plant material dies off and is decomposed through the action of the aerobic bacteria.

Nutrient transport is governed by several chemical, physical, and biological processes known as the nutrient cycle. The nitrogen cycle consists of four processes (nitrogen fixation, ammonification, nitrification, and denitrification) that convert nitrogen gas into usable nitrogen forms and back into nitrogen gas. Nitrogen fixation converts gaseous nitrogen into ammonia while ammonification involves the breakdown of wastes and nonliving organic tissue into ammonia. The nitrification process oxidizes ammonia that results in nitrate and nitrite. Finally, nitrates are converted back into gaseous nitrogen through the denitrification process. Ammonia ions, nitrites, and nitrates are most important for water quality assessments because of their impact on water quality. The conversion of ammonia to nitrate consumes 4.57 pounds of oxygen for every pound of ammonia (USEPA, 1993).

Instream DO concentrations fluctuate daily. The diurnal variations in DO concentrations are mainly due to photosynthesis and respiration of aquatic plants such as phytoplankton, aquatic weeds, or algae (Chapra, 1997; Wetzel, 1983). Photosynthesis is the process by which plants use solar energy to convert simple inorganic nutrients into more complex organic molecules. Because of the need for solar energy, photosynthesis occurs only during daylight hours and is represented by the following simplified equation:



In this reaction, photosynthesis is the conversion of carbon dioxide and water into sugar and oxygen such that there is a net gain of DO in the water body (Ricklefs, 1983). Conversely, respiration and decomposition operate the process in reverse and convert sugar and oxygen into carbon dioxide and water resulting in a net loss of DO to the water body. Respiration and decomposition occur at all times and are not dependent on solar energy. Water bodies exhibiting the typical diurnal variation of DO experience the daily maximum in mid-afternoon during which time photosynthesis is the dominant mechanism and experience the daily minimum in the predawn hours during which respiration and decomposition have the greatest effect on DO and photosynthesis is not occurring (Wetzel, 1983).

1.3 Water Quality Standards and Beneficial Uses

The beneficial use identified for Bee Lake is Aquatic Life Support (MDEQ, 2002). Although there are no specific applicable criteria for this beneficial use, the criteria listed in Table 1-3 apply to all surface waters in Mississippi. The water quality objectives provide both a narrative and numeric basis for identifying appropriate TMDL endpoints for sedimentation/siltation and organic enrichment/low DO.

Table 1-3. Relevant Water Quality Objectives

Section	Water Quality Objective
Section II.3	Waters shall be free from materials attributed to municipal, industrial, agricultural or other discharges producing color, odor, taste, total suspended or dissolved solids, sediment, turbidity, or other conditions in such degree as to create a nuisance, render the waters injurious to public health, recreation or to aquatic life and wildlife or adversely affect the palatability of fish, aesthetic quality, or impair the waters for any designated use.
Section II.7	<p>DO concentration shall be maintained at a daily average of not less than 5.0 mg/L with an instantaneous minimum of not less than 4.0 mg/L. When possible, samples should be taken from ambient sites according to the following guidelines:</p> <ul style="list-style-type: none"> • For waters that are not thermally stratified, such as unstratified lakes, lakes during spring turnover, streams, and rivers. At mid depth if the total water column is 10 feet or less and at 5 feet from the water surface if the total water column is greater than 10 feet. • For waters that are thermally stratified such as lakes, estuaries, and impounded streams. At mid depth if the epilimnion is 10 feet or less and at 5 feet from the water surface if the epilimnion depth is greater than 10 feet.

1.4 Watershed Description

The Bee Lake watershed, which is part of U.S. Geological Survey (USGS) Hydrologic Unit Code (HUC) 08030206, encompasses approximately 18.5 square miles (11,870 acres). It is located in Holmes County southeast of Lexington, Mississippi (Figure 1-2).

The highest area of the watershed, with a peak of approximately 115 feet above mean sea level (MSL), is located in the northeast. The lowest points are near Bee Lake, at approximately 90 feet MSL. Land use in the watershed is predominantly agricultural. The major crops within the watershed are corn, cotton, rice, sunflowers, sorghum, soybeans, other small grains, winter wheat, and snap beans, with cotton being the major crop. It includes a number of man-made aquaculture ponds that are used for raising catfish. Most of the aquaculture ponds are located in the southern portion of the watershed.

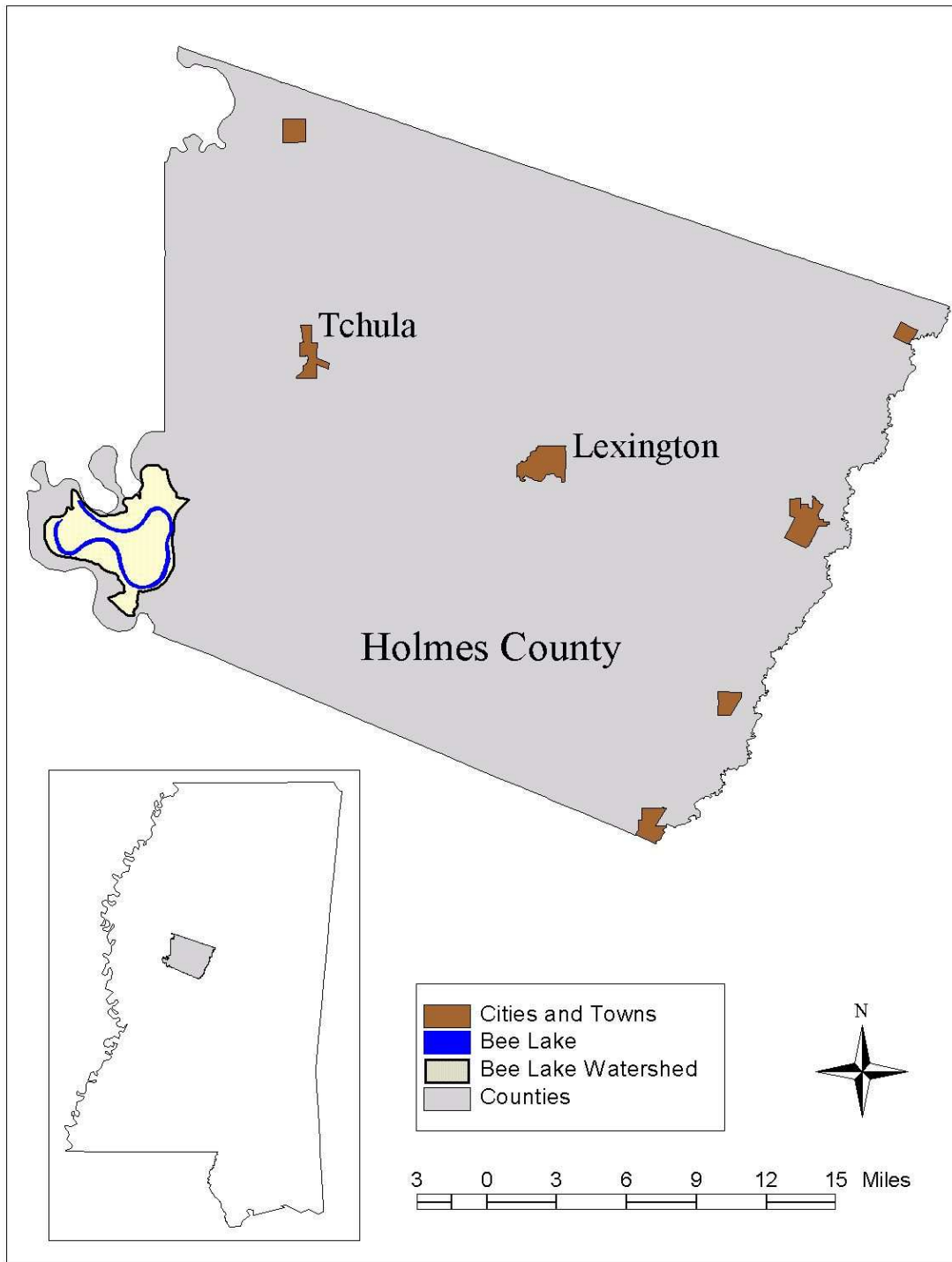


Figure 1-2. Watershed Location

1.4.1 Topography

The Bee Lake watershed is relatively flat, with only a 25-foot difference between its highest point and its lowest point. The highest point is in the northeastern portion of the watershed at an elevation of approximately 115 feet above mean sea level (MSL). The lowest point, about 90 feet MSL, is in the north central portion of the watershed, just north of Bee Lake. Bee Lake is approximately 100 feet MSL. Figure 1-3 shows the digital elevation map for the Bee Lake watershed.

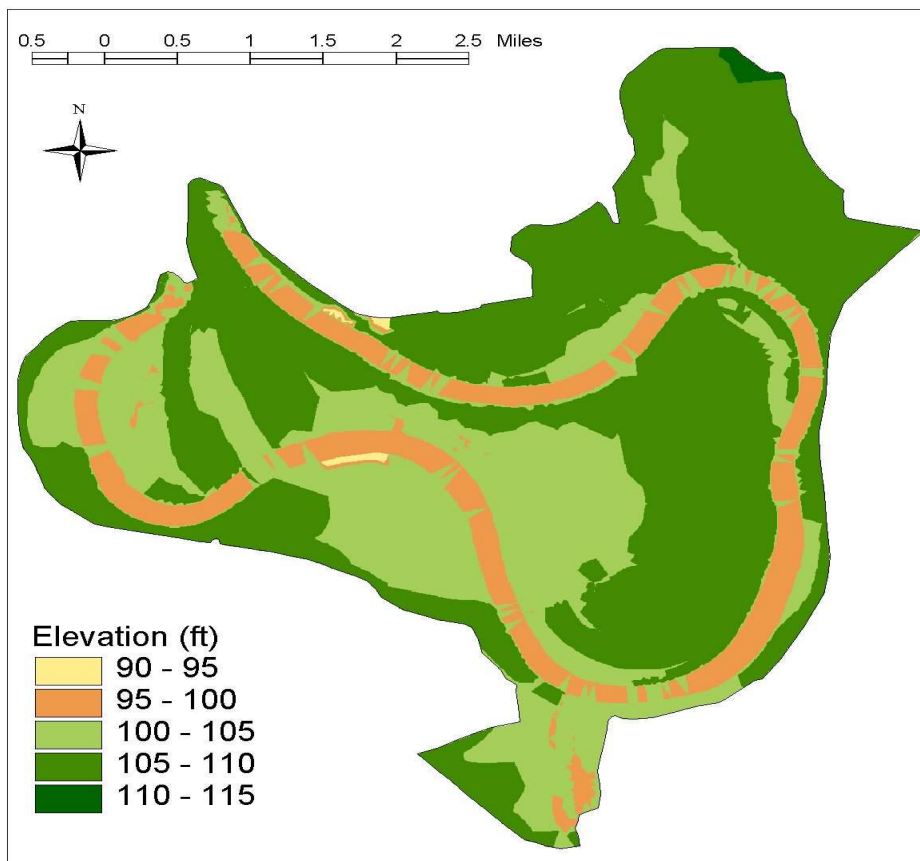


Figure 1-3. Digital Elevation Map

1.4.2 Soil Type

There are two soil types in the Bee Lake watershed: Sharkey-Forestdale-Dundee (MS017) and Dundee-Forestdale-Dubbs (MS029). These soil groups are presented in Figure 1-4 and Table 1-4. The Dundee-Forestdale-Dubbs soil covers the majority of the watershed. The infiltration rates for these types of soil groups are characterized by slow to extremely slow permeability and a soil erodibility factor (K) of 0.34 to 0.42.

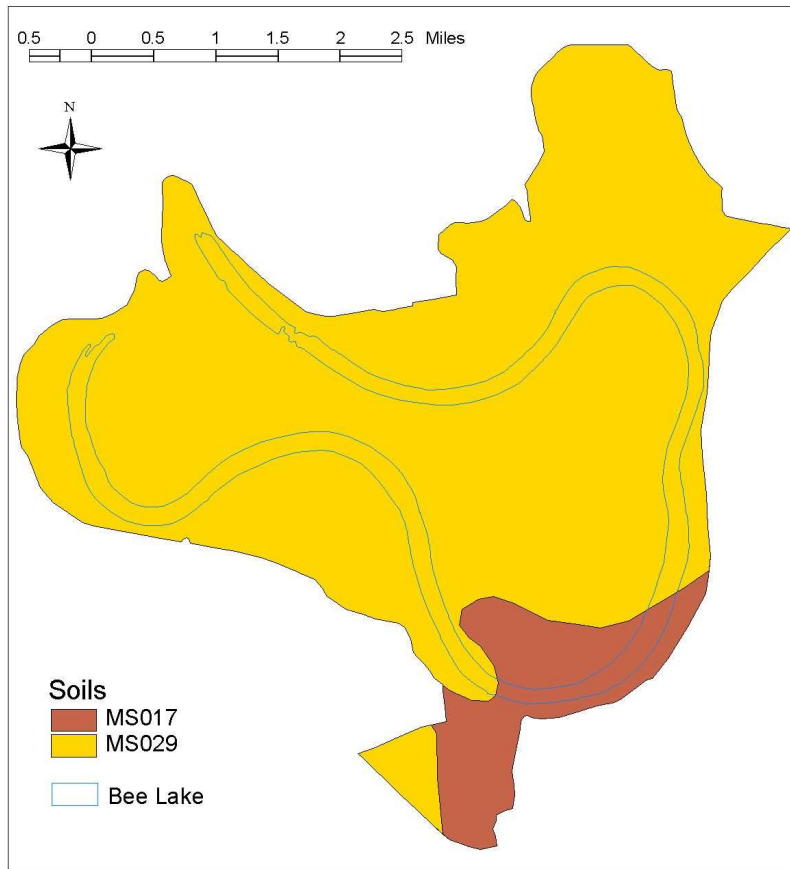


Figure 1-4. Soil Type

Table 1-4. Soil Types

Soil Type	Soil Name	Area (acres)
MS017	Sharkey-Forestdale-Dundee	1,182
MS029	Dundee-Forestdale-Dubbs	10,688
Total		11,870

1.4.3 Land Use

The Bee Lake watershed consists of approximately 97 percent cropland, bottomland hardwood forest, or water, of which 73 percent is cropland. Of the remaining 3 percent, farmed wetlands and pasture/grasslands are the largest land uses. Riverine swamp, bottomland hardwood forests, farmed wetlands, and water are the predominant land uses in areas that are lower than the surrounding area. Figure 1-5 and Table 1-5 present the land use areas in the watershed.

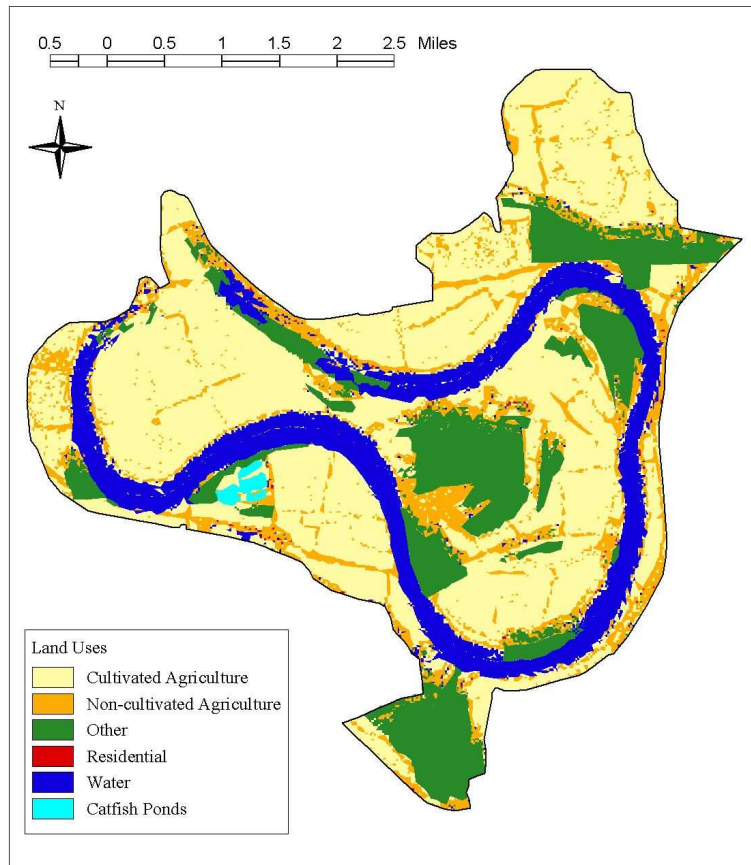


Figure 1-5. Mississippi Automated Resource Information System Land use

Table 1-5. Land Use

Land Use	Area (acres)	Area (%)
Catfish Ponds	79	1
Cultivated Agriculture	6,091	51
Non-cultivated Agriculture	1,707	14
Other	2,622	22
Residential	173	1
Water	1,198	10
Total	11,870	~100

1.5 Climate Characteristics

Mississippi is located in the humid subtropical climate region, characterized by temperate winters and long, hot summers; rainfall occurs more often in the winter and early spring. Late summer and fall are typically the driest times of the year. The state, however, is subject to periods of both drought and flood. Prevailing southerly winds provide moisture for high humidity from May through September. The potential for locally violent and destructive thunderstorms averages about 60 days each year. Eight

hurricanes have struck Mississippi's coast since 1895, and tornadoes are a particular danger, especially during the spring season (MS State Climatologist, 2003).

Normal mean annual temperature for the Jackson weather station, which is the closest weather station monitoring daily temperature, is 18°C. Low temperatures have dropped to 4°C, while the maximum temperatures have reached 29°C. Mississippi, in general, has a climate characterized by the absence of severe cold in winter but the presence of extreme heat in summer. The ground rarely freezes and outdoor activities are generally planned year-round. Cold spells are usually of short duration, and the growing season is long (MS State Climatologist, 2003).

1.6 Socioeconomic Characteristics

The social and economic region for Bee Lake is Holmes County, a sparsely populated area covering 756 square miles and having only 29 persons per square mile (US DOC, Census, 2002). Comparatively, Mississippi has 61 persons per square mile and the United States has 80 persons per square mile. The largest source of jobs in the area is in the government sector (which includes federal, state, and local government), accounting for 22.9 percent of total employment, followed closely by the services sector at 22.8 percent of total employment. The services industry includes establishments primarily engaged in providing a wide variety of services, such as hotels and other lodging places; establishments providing personal, business, repair, and amusement services; health, legal, engineering, and other professional services; educational institutions; membership organizations; and other miscellaneous services (OSHA, 2001). The retail trade sector is the third largest employer, providing 15.5 percent of the total number of jobs, followed by the farming sector, which accounted for 12.7 percent, and then manufacturing at 12.5 percent. Farming in the region includes row crops such as cotton, corn, soybeans, rice, and sorghum. Catfish farming is also a growing animal agricultural industry in the Mississippi Delta area.

Bee Lake attracts recreational fishermen, who contribute to the services sector of the regional economy. Recreational visitors benefit the local economy through expenditures on food, lodging, and sporting goods. The lake has one pay-to-launch boat ramp (MDWFP, 2003).

1.7 Threatened or Endangered Species Within the Watershed

Information on endangered species found within the Bee Lake watershed was obtained from the Mississippi Department of Wildlife, Fisheries, and Parks. There is one species of concern, the Paddlefish (*Polyodon Spathula*), found in Bee Lake (Mississippi Natural Heritage Program, 2000).

2.0 Data Summary

This section provides an inventory, description, and review of the data compiled to support Total Maximum Daily Load (TMDL) development, as well as a brief description of data limitations.

2.1 Data Inventory

Tables 2-1 and 2-2 identify available data used to support the TMDL development effort. The two tables represent the major categories of data: geographic or location information and monitoring data. Data include water quality observations, sediment source information, land use, and meteorological data.

Table 2-1. Available Geographic or Location Information

Type of Information	Data Source(s) ^a
Stream network	USEPA BASINS (Reach File, Versions 1 and 3); USGS NHD reach file; MARIS
Land use	MARIS
Cities/populated places	BASINS; MARIS; U.S. Census
Counties	BASINS; MARIS
Soils	BASINS (USDA-NRCS STATSGO); MARIS
Watershed boundaries	BASINS (8-digit hydrologic cataloging units); MARIS
Topographic and digital elevation models (DEMs)	BASINS (DEM); USGS digital raster graphs
Aerial photos	MARIS
Roads	BASINS; MARIS
Ecoregions	BASINS (USDA Level 3 ecoregions)
Water quality station locations	BASINS
Meteorological station locations	BASINS; NOAA-NCDC
Stream gage stations	BASINS; USGS
Surface geology	MARIS
Dam locations	MARIS
Impaired water bodies (303(d)-listed segments)	MDEQ

^a USEPA = U.S. Environmental Protection Agency, BASINS = Better Assessment Science Integrating Point and Nonpoint Sources, USGS = U.S. Geological Survey, NHD = National Hydrography Dataset, MARIS = Mississippi Automated Resource Information System, MDEQ = Mississippi Department of Environmental Quality, USDA-NRCS = U.S. Department of Agriculture, Natural Resources Conservation Service, NOAA-NCDC = National Oceanic and Atmospheric Administration, National Climatic Data Center, NHD = National Hydrography Dataset.

Table 2-2. Available Monitoring Data

Type of Information	Data Source(s)
Water body Characteristics	
Physical data	BASINS (Reach File, Versions 1 and 3); USGS NHD Reach data
Flow	
Historical flow record	USGS (gage sites located near but not in watersheds)
Meteorological data	
Rainfall	NOAA-NCDC, Earth Info
Temperature	NOAA-NCDC, Earth Info
Water quality data (surface water, groundwater)	
Water quality monitoring data	MS Office of Pollution Control, 1994 Clean Lakes Survey MS Office of Pollution Control, 1995 Clean Lakes Survey

2.2 Monitoring Data Assessment of Bee Lake

There are limited monitoring data for Bee Lake. Both the 1994 and 1995 Clean Lakes Surveys sampled Bee Lake only on one occasion at one station each. The relevant data are listed below in Table 2-3.

Table 2-3. Available Water Quality Monitoring Data

Parameter	1994 Clean Lakes Survey Monitoring Data	1995 Clean Lakes Survey Monitoring Data
Sample date	20 June 1994	11 July 1995
Sample time	14:40	11:15
Conductivity ($\mu\text{mhos/cm}$)	57	59
pH	8.2	7.8
Hardness (mg CaCO_3/L)	28	23
Alkalinity (mg CaCO_3/L)	37	23
Secchi disk (cm)	35	65
TKN (ppm)	0.92	1.55
$\text{NH}_3\text{-N}$ (ppm)	0.16	<0.1
NO_2+NO_3 (ppm)	<0.04	<0.04
Total phosphorus (ppm)	0.2	0.08
TOC (ppm)	5.0	5.0
Chlorophyll a ($\mu\text{g/L}$)	Not sampled	36.57

DO and temperature were also sampled during both surveys, with measurements taken at four depths. The data are listed in Table 2-4.

Table 2-4. Available DO and Temperature Data

Depth (m)	DO (mg/L)		Temperature (°C)	
	1994	1995	1994	1995
Surface	8.7	9.2	31.3	32
1	3.3	8.9	28.0	31
2	0.6	2.8	27.5	29
2.5	<0.1		26.0	
3		0.7		27

3.0 Source Assessment

This section describes the potential sources in the Bee Lake watershed. The source assessment, along with the available data for Bee Lake described in the previous section was used as the basis of development of the model and analysis of the TMDL allocation. The potential point and nonpoint sources are characterized by the best available information and literature values. This section documents all available information.

3.1 Point Sources

Pollutant sources under the Clean Water Act (CWA) are typically categorized as either point or nonpoint sources. Point sources, according to 40 CFR 122.3, are defined as any discernible, confined, and discrete conveyance, including but not limited to, any pipe, ditch, channel, tunnel, conduit, well, discrete fissure, container, concentrated animal feeding operation, landfill leachate collection system, vessel, or other floating craft from which pollutants are or may be discharged. The National Pollutant Discharge Elimination System (NPDES) Program, under CWA Sections 318, 402, and 405, requires permits for the discharge of pollutants from point sources. There are several types of permits under the NPDES permit program: effluent from facilities, municipal wastewater treatment plants, storm water from construction sites, and municipal separate storm sewer systems (MS4s).

As of March 2003, the discharge of storm water from construction activities disturbing between 1 and 5 acres must also be authorized by an NPDES permit, in addition to the requirements already in place for larger construction sites. The purpose of these NPDES permits is to eliminate or minimize the discharge of pollutants from construction activities. Since construction activities at a site are of a temporary, relatively short-term nature, the number of construction sites covered by the general permit at any point in time varies. The target for these areas is the same range as the TMDL target of 0.75 to 0.44 tons per acre per year. The Waste Load Allocations (WLAs) provided to the NPDES-regulated construction activities and MS4s will be implemented as Best Management Practices (BMPs) as specified in Mississippi's General Storm water Permits for Small Construction, Construction, and Phase I & II MS4 permits. It is not technically feasible to incorporate numeric sediment limits into construction storm water or MS4 permits at this time. WLAs should *not* be construed as numeric permit limits for construction or MS4 activities. Properly designed and well-maintained BMPs are expected to provide attainment of WLAs.

A review of the Mississippi automated resource information system discharge elimination file determined that no permitted point source discharges are located within the watershed. The towns within the Bee Lake watershed are small and, according to the final Phase II Storm water NPDES regulations, are not considered regulated small MS4s at the present time. However, the potential for sediment loadings from NPDES-regulated construction activities and MS4s is considered a point source of sediment to surface waters. These discharges occur in response to storm events and are included in the WLA of this TMDL.

3.2 Nonpoint Source Data

Nonpoint sources in the watershed may also contribute pollutants to the lake and its tributaries. Nonpoint sources represent contributions from diffuse, nonpermitted sources. Exceptions to this are where some aquaculture facilities (which are discrete and non-permitted sources), and where storm water collection systems are in place regulating the runoff as a point source, since the runoff is delivered to the receiving water body through a conduit. Nonpoint sources include both precipitation driven and non-precipitation-driven events, such as contributions from groundwater; septic systems; direct deposition of pollutants from wildlife, livestock, or atmospheric fallout.

Nonpoint sources contribute sediment and oxygen-consuming loads into the waters of the Bee Lake watershed. On the land surface, oxygen-consuming constituents accumulate over time and wash off during rain events. As the runoff transports the sediment over the land surface, more oxygen-consuming constituents are collected and carried to the stream. The net loading into the stream is determined by the local watershed hydrology.

3.2.1 Agricultural Sources

The Mississippi Valley is one of the most intensively agricultural areas in the United States. The flat, fertile soils produce a variety of crops including cotton, corn, and soybeans (Rebich, 1999).

Cultivated and noncultivated agricultural lands cover 51 percent and 14 percent of the Bee Lake watershed area, respectively. Cotton is the major crop in the Bee Lake watershed, representing 53 percent of the total cultivated agriculture land. Additional crops include: corn, soy beans, sorghum, snap beans, other small grains, rice, winter wheat, and sunflowers.

Farming practices, including frequent tillage, and over grazing diminish vegetative cover and result in the elevated loading of sediment and oxygen-consuming constituents in nearby water bodies. Agricultural Best Management Practices (BMPs) such as buffer strip, conservation tillage, and the proper land application of animal wastes reduce the amount of sediment and oxygen-consuming constituents loading to water bodies.

3.2.2 Aquaculture

The production of catfish is the largest aquaculture enterprise in the United States. Catfish ponds located in the Mississippi Valley account for approximately 78 percentage of the total land area devoted to catfish production (USEPA, 2002). The majority of the catfish ponds in the Mississippi Valley are groundwater-fed, earthen levee ponds. The discharge of sediments rich in oxygen-consuming substances from catfish ponds occurs during drainage and overflow events. Drainage occurs occasionally, an average of once every 6 years for most ponds, when ponds are drained for harvesting or structural repairs. However, overflow from ponds occurs more often, when the pond level rises due to precipitation events. Therefore, in this analysis, the ponds are treated as nonpoint

sources. Common pond management practices that reduce the frequency of pollutant discharges include managing pond levels to maintain water storage potential and reducing the frequency of pond drainage for cleaning and repairs. These practices are currently used in most catfish ponds in Mississippi (Tucker et al, 1996). A complex of catfish ponds covering approximately 79 acres, less than 1 percent of the watershed area, is present in the Bee Lake Watershed.

3.2.3 Septic Systems

Failing septic systems represent a source that may contribute oxygen-consuming constituents to receiving water bodies through surface or subsurface malfunctions. Quantifying loading from actual failing septic systems and potential illegal discharges is difficult. Since the number of dwellings within the lake’s watershed is small, septic systems were omitted from the analysis.

Holmes County has a total of 8,439 housing units (Table 3-1). Approximately 1.6 percent of the housing units within the county lacked complete plumbing facilities. Because of this low percentage, septic systems were omitted from the analysis.

Table 3-1. Regional Housing Characteristics

	Holmes County	Percent
Total housing units	8,439	100.0
1-unit detached	5,248	62.2
In building with 10 or more units	130	1.5
Mobile homes	2,265	26.8
Lacking complete plumbing facilities	118	1.4
Occupied units	7,314	86.7
Vacant units	1,125	13.3
For seasonal, recreational, or occasional use	358	4.2

Source: US DOC, Census, 2001.

3.2.4 Groundwater

The Mississippi River alluvial aquifer underlies the Mississippi River alluvial plain locally known as the Delta. The alluvial aquifer is the most heavily pumped aquifer in Mississippi (Arthur, 2001), of which 98 percent is for agriculture. According to the USGS, “the aquifer receives water vertically from precipitation, internal stream and lakes, and locally from the Cockfield and Sparta aquifers where they directly underlie the alluvial aquifer. The alluvial aquifer also discharges water to the underlying aquifers, and during extended periods with no surface runoff, to the Mississippi River and to the internal streams and lakes”(Arthur, 2001).

The water quality of the alluvial aquifer is well suited for agriculture but less suited for municipal and some industrial use. It is commonly a hard, bicarbonate type. It contains appreciable amounts of manganese and dissolved iron concentrations usually greater than 3.0 mg/L. According to the USGS, nutrient concentrations are generally low. All nitrate

concentrations have been below the USEPA drinking water standard of 10 mg/L (Kleiss et al, 1999).

3.2.5 Background Sources

A TMDL load allocation must consider the natural background loading of a pollutant. For this TMDL, the contribution of sediment and organic material from forested areas was considered be the background load. Forested land, including bottomland hardwood forest, upland scrub, and riverine swamp, covers 22 percent of the Bee Lake watershed. Sediment contributions are generated from forested areas and other nonanthropogenic areas. While present, they are generally lower than those from disturbed land uses. Forested areas that are subject to silviculture and other forestry activities may exhibit elevated sediment contributions. The monitoring data for the Bee Lake watershed were insufficient to separate natural forest loadings from other forest sources.

The yield of oxygen-consuming substances from forested land is generally low compared to other land uses because the dense vegetative cover stabilizes soil, reduces rainfall impact, and in many cases encourages uptake of nutrients.

4.0 Technical Approach

The objective of this section is to present the key issues considered for TMDL development, and the technical approaches that fulfill the TMDL requirements.

4.1 Technical Approach Selection

The technical approach selected for TMDL development was based on an evaluation of technical and regulatory criteria (EPA, 1991). Technical criteria refer to the model's simulation of the physical system in question, including watershed and/or stream/lake characteristics or processes and constituents of interest. Regulatory criteria make up the constraints imposed by regulations, such as water quality standards or the procedural protocol.

The key technical factors that were considered in identifying the appropriate analytical approach for the sediment/siltation impairments include the following:

- Sediment loads are contributed only by nonpoint sources.
- Erosion and sediment transport generally occur as a result of rainfall events.
- Sedimentation problems in the lake are a cause of cumulative contributions.
- Insufficient monitoring data are available in the watershed to evaluate the magnitude of stream channel and stream bank erosion.

Key technical factors that were considered in identifying the appropriate analytical approach for the nutrient and organic enrichment/low DO impairments include:

- Oxygen-demanding substances (including nutrients) are contributed only by nonpoint sources.
- Oxygen-demanding substances are contributed both from the land surface (as a result of rainfall events) and from the subsurface (resulting from groundwater contributions).
- The annual load of oxygen-demanding substances is responsible for the accumulated benthic blanket of the water body, which in turn, is expressed as Sediment Oxygen Demand (SOD).

A properly designed and applied technical approach provides the source-response linkage component of the TMDL and enables accurate assimilative capacity assessment and allocation proposition. A water body's assimilative capacity is determined through adherence to predefined water quality criteria (i.e., regulatory considerations). Mississippi's applicable water quality standards were presented earlier in this report and provide the basis for establishing appropriate TMDL targets. For sediment/siltation, these standards are narrative; however, for low DO, they are numeric. The instream DO target for this TMDL is a daily average of not less than 5.0 mg/L. The instantaneous minimum portion of the DO standard was considered when establishing the instream target for this TMDL. However, it was determined that using the daily average standard

with the conservative modeling assumptions would be sufficiently protective of the instantaneous minimum standard.

Based on the considerations identified above, the technical approach to address sediment/siltation and organic enrichment/low DO impairments in Bee Lake includes a combination of watershed and lake water quality models:

- A simplified watershed model to predict runoff and loadings of sediment, nutrients, and organic material to the lake to address both sediment/siltation and organic enrichment/low DO impairments.
- A receiving water model of the organic enrichment/low DO in Bee Lake for prediction of instream DO concentrations for comparison to selected endpoints.
- A siltation rate analysis for the lake.

The technical approach to TMDL development must consider the dominant watershed and inflake processes. Pollutant loading in the Bee Lake watershed is primarily from nonpoint or diffuse sources, which are typically rainfall driven and relate to surface runoff and subsurface discharge to a stream. Apart from aquaculture within the watershed, which is treated as a point source, no point sources exist in the watershed. The inflake processes include advective and diffusive transport and nutrient cycling. The approach will provide a hydrologic, sediment, and nutrient loading budget for the watershed that can be linked to an inflake and instream water quality model to assess the inflake water quality.

4.2 Modeling

Both watershed and receiving water models were used to identify the TMDL for sediment and organic enrichment. To facilitate the discussion, the models are discussed by impairment in the following subsections.

4.2.1 Sedimentation

The Generalized Watershed Loading Function model (GWLF) (Haith and Shoemaker, 1987) was selected to simulate the loading of sediment and oxygen-consuming substances from the Bee Lake watershed. The GWLF model has been widely used to estimate sediment and nutrient loads from agricultural watersheds. The GWLF model uses the Soil Conservation Service Curve Number (SCS-CN) approach to model surface runoff and the Universal Soil Loss Equation (USLE) algorithm to model erosion and sediment yield. The SCS-CN and USLE methods are a component of other watershed models including the Agricultural Nonpoint Source Loading (AGNPS) model and the Soil and Water Assessment Tool (SWAT).

GWLF is an aggregate distributed/lumped parameter watershed model. For surface loading, it is distributed in the sense that it allows multiple land use/land cover scenarios. Each category area is assumed to be homogenous with respect to various attributes considered by the model. Additionally, the model does not spatially distribute the source

areas, but aggregates the loads from each area into a watershed total. In other words, there is no spatial routing. For subsurface loading, the model acts as a lumped parameter model using a water balance approach. No distinctly separate areas are considered for subsurface flow contributions. Daily water balances are computed for an unsaturated zone as well as for a saturated subsurface zone, where infiltration is computed as the difference between precipitation and snowmelt minus surface runoff plus evapotranspiration. Monthly calculations are made for sediment and nutrient loads, based on daily water balance totals that are summed to give monthly values.

The sediment accumulation in Bee Lake can be assessed using trap efficiency calculations. The Brune method (USACE, 1989) provides a widely used trap efficiency estimation method for lakes and reservoirs, using a graphical relationship between trap efficiency and the ratio of water body volume to annual volumetric inflow. Using the volume of the lake and estimated annual inflows from the GWLF model, the trap efficiency (%) of the lake can be estimated. Based on the trap efficiency, the siltation rate can then be estimated. Additional modeling information can be found in Appendix A.

4.2.2 Organic Enrichment/Low DO and Nutrients

The Bee Lake system is fairly long and narrow. Inlake conditions are assumed to vary along the length of the system, and vertical stratification occasionally occurs. The existing calibrated CE-QUAL-W2 (Cole and Buchak, 1995) hydrodynamic model for this system will be used to simulate eutrophication processes. The model is vertically and horizontally two-dimensional and simultaneously simulates hydrodynamics and the transport and transformation of water quality variables. The model was configured with 18 longitudinal segments, ranging in length from 500 to 1,900 meters long, and a maximum of two 1-meter and one ½-meter-thick vertical layers. The total number of active model cells was 53. In general the simulated DO followed a seasonal trend. No calibration could be performed at this time due to lack of inlake monitoring data. Additional information on model calibration (plots and discussion), and additional modeling information about model setup, assumptions, and limitations can be found in Appendix B.

Once the model setup was complete, the model was run for the selected critical period from 1997 to 2000 under baseline conditions. The baseline model run reflects the existing conditions for these years without any reduction to the oxygen-consuming loadings from the watershed. The model simulation results were analyzed at the mid-depth with the daily average DO criteria. The DO standard was applied at mid-depth of the lake, as the average depth of the lake was less than 10 feet. Model segment 9 (Figure B-1 in Appendix B) was chosen as the location for evaluating the TMDL. This segment includes the sampling location where data was collected and was assumed to be representative of the lake.

The model results show that the lake meets the state standard for DO under the baseline conditions. However, since the predicted DO levels are just above 5.0 mg/L, it appears that the lake has reached its assimilative capacity at the present loads. No reductions are

recommended for the watershed to achieve the DO water quality at mid-depth. Figures 4-1 shows the baseline case at mid-depth for the daily average DO at segment 9.



Figure 4-1. Daily Average DO in Bee Lake at Mid-Depth.

4.2.3 Modeling Assumptions

Some of the major underlying assumptions for this analysis include the following:

General

- Meteorological data from Jackson, Mississippi, were assumed to be representative of the entire watershed contributing to the lake, although the station is located outside the watershed. The Jackson, MS station was used because it is the station nearest to Bee Lake that has complete meteorological records.
- The watersheds delineated were based on topographic data and available stream and channel coverages. Data regarding flow diversions to or from other watersheds were not available and therefore not considered in the analysis.

Sedimentation Analysis

- The lake's life span was estimated by predicting the amount of sediment contributed to the lake over time and determining the reservoir volume reduced by the sediment. Sediment reaching the lake was assumed to be deposited homogeneously over the entire lake bottom. In reality, however, sediment deposition varies depending on many factors, such as bathymetry. The life of the lake was assumed to be exhausted when the lake surface area was reduced by approximately 50 percent.
- The lake's sediment-trapping efficiency was based on Brune's method (USACE, 1989).

- The sediment distribution was assumed to be an equal mix of sand, silt, and clay particles.
- Sedimentation at the land use level was predicted using USLE, and only a portion of this load was delivered to the lake. The percentage of eroded sediment delivered to the lake was based on a sediment delivery ratio.
- Available data indicated that no timber harvesting was occurring within the watershed. Therefore, forested land was assumed to be consistent throughout the watershed with respect to sediment load contributions.
- Sedimentation prediction assumed that unpaved roads were not playing a major role in sediment contribution to the lake.
- Land management practices including reduced tillage, cover crops and detention ponds are widely used in the Mississippi Delta area (Yuan and Binger, 2002). Therefore, agricultural land in the watershed was assumed to be managed under moderate tillage.

Organic Enrichment/Low DO and Nutrients

- Monthly loads are assumed to sufficiently represent loading variability to the lake model.
- The Wolf Lake kinetic parameters were assumed to be applicable to Bee Lake.
- The watershed model gives an estimate of the total phosphorus and total nitrogen. These loadings were split based on the nutrient ratios determined from inlake monitoring data to provide the required loadings (as per the CEQUAL-W2 model requirements) of dissolved and particulate organic material, ammonia, nitrate-nitrite, and ortho-phosphorous that feed into the W2 model.
- Long-term contributions of nutrients and other oxygen-demanding substances to the lakes ultimately result in high SOD levels.
- The watershed model did not simulate DO and water temperature; therefore, a number of assumptions were made regarding boundary conditions (inputs from the watershed) for the lake model. A DO concentration time series equal to 90 percent saturation was assumed for all inputs.

4.2.4 Limitations

A number of limitations were inherent in the analytical process because of the approach selected. These limitations are identified below. Although these limitations are present, the approach followed successfully resulted in TMDL identification. If additional data are collected for Bee Lake, many of these limitations can be addressed.

Sedimentation Analysis

- Stream-bank erosion was not explicitly considered in the analysis. Only surface erosion and delivery were considered.
- Sediment deposition varies depending on many factors, such as bathymetry. Sediment deposition was assumed to occur evenly over the entire lake area. The life of the lake was assumed to be exhausted when the water volume in the lake surface area was reduced by approximately 50 percent.

- Forested land was assumed to be consistent throughout the watershed, with respect to sediment load contributions.

Organic Enrichment/Low DO and Nutrients

- Sediment nutrient and oxygen flux data for the lake were not available. Collection of these data is important to further understanding of the overall sediment fluxes in the lake and their implications on DO levels. In the event that additional sediment flux data are collected, extending the existing reservoir model to consider predictive sediment diagenesis processes, which dynamically links sediment response to nutrient inputs, could provide a better long-term prediction of SOD. Presently, the CE-QUAL-W2 model does not include a sediment modeling system that directly interacts with the water column; i.e. there is no separate sediment compartment.
- The lake was assumed to be nitrogen limited. This analysis does not consider the possibility that once the nitrogen load is reduced, it is possible that phosphorus will become the limiting nutrient. Without additional monitoring data to support model calibration (i.e, data that quantitatively demonstrate this phenomenon), this shift in nutrient limitation cannot be explicitly modeled.
- The impact of sediment reduction on light extinction in the lake was not considered during the allocation process. It is possible that as sediment loads are reduced, more light will be available to algae in the lake. Light availability may result in increased algae growth and possibly greater DO concentration variability.

4.2.5 Recommendations

Although data collection activities are not planned at present, suggestions for data that could be used to refine the assumptions and address the limitations of the modeling effort are included in this report. Additional data collection would enable a more detailed and refined analysis of sedimentation and DO/organic enrichment dynamics in the lake. These data would ultimately lead to more refined TMDL values and load allocations.

General

- No flow gages are currently located within the watershed. Flow monitoring would provide valuable insight into the watershed's hydrology and support further evaluation of meteorological and land-based impacts on the lake.

Sedimentation Analysis

- Insufficient sediment monitoring data were available to perform a detailed evaluation of sedimentation and resuspension in the lake. Further evaluation of sedimentation spatially and temporally throughout the lake would provide a more precise estimation of the life span.
- Further analysis of stream channel morphology and evolution is recommended to identify the significance of stream-bank erosion to the lake's sedimentation rate. If stream-bank erosion is found to play a major role in sediment contributions to the lake, simulation of stream channel evolution may be a useful analytical tool.
- Additional ground-truthing of unpaved road locations and their impact on sedimentation in the watershed is recommended.

Organic Enrichment/Low DO and Nutrients

- Additional water quality monitoring data within the lake are necessary to support model calibration and to better understand the dynamics of the lake. These data should be collected at multiple locations throughout the lake during different seasons, and they should include depth-variable temperature, DO, and nutrient samples; diurnal DO data; and algal bioassays.
- Water quality monitoring data for tributaries contributing to the lake are important in evaluating locational and source-specific pollutant contributions, as well as identifying seasonal and critical period trends. It is recommended that water quality samples be collected at multiple locations throughout the watershed for baseflow and storm flow conditions.
- The relationship between sediment reduction, light extinction, and algae growth needs to be explored further. Sediment reduction levels, without an associated reduction in nutrients, may result in increased light availability and thus increased algae growth and diurnal DO variations. It is important to collect data that provide more insight into these dynamics.

5.0 TMDL Development

A total maximum daily load (TMDL) for a given pollutant and water body is comprised of the sum of individual wasteload allocations (WLAs) for point sources, and load allocations (LAs) for both nonpoint sources and natural background levels. In addition, the TMDL must include a margin of safety (MOS), either implicitly or explicitly, to account for the uncertainty in the relationship between pollutant loads and the quality of the receiving water body. Conceptually, this definition is represented by the equation:

$$\text{TMDL} = \sum \text{WLAs} + \sum \text{LAs} + \text{MOS}$$

The TMDL is the total amount of pollutant that can be assimilated by the receiving water body while still achieving water quality standards. In TMDL development, allowable loadings from all pollutant sources that cumulatively amount to no more than the TMDL must be established and thereby provide the basis to establish water quality-based controls.

5.1 TMDL Water Quality Endpoints

One of the major components of a TMDL is the establishment of instream numeric endpoints, which are used to evaluate the attainment of acceptable water quality. Instream numeric endpoints represent the water quality goals that are to be achieved by meeting the load allocations specified in the TMDL. The endpoints allow for a comparison between observed instream conditions and conditions that are expected to restore designated uses. Specifications of numeric water quality endpoints or targets are discussed by pollutant below.

5.1.1 Sediment/Siltation

No numeric endpoints are defined in Mississippi's water quality standards; therefore, for TMDL development, an appropriate target was defined. Oxbow lakes are naturally dynamic systems and have limited life spans, typically filling with sediment over time (Monroe et al, 1992). As a result, a reasonable goal for TMDL development is not necessarily to prevent sediment accumulation entirely, but to return the lake to its natural rate of sediment accumulation. Therefore, a target sedimentation rate was defined based on an assessment of current watershed sediment loading rates and sediment loading rates under various land management conditions. The land management scenarios used to develop the target sedimentation rates include only a few examples of how the current land uses could be modified to reduce the sediment loading. Other options, beyond those presented in this report are possible.

5.1.2 Organic Enrichment/Low DO and Nutrients

The endpoint for organic enrichment/low DO and nutrient TMDL development for Bee Lake is based on the daily average of not less than 5.0 mg/L.

Generally, an organic enrichment/low DO impairment suggests critical conditions in the water body that result from processes that link sources of nutrients and organic material to biological processes and DO levels.

For this TMDL, organic enrichment has been expressed in terms of total biochemical oxygen demand (TBODu). TBODu represents the oxygen consumed by microorganisms while stabilizing or degrading carbonaceous and nitrogenous compounds under aerobic conditions over an extended time period. The carbonaceous compounds are referred to as CBODu and the nitrogenous compounds are referred to as NBODu. TBODu is equal to the sum of CBODu and NBODu.

$$\text{TBODu} = \text{CBODu} + \text{NBODu} \quad [1]$$

The watershed model gives an estimate of oxygen-consuming substances from which an estimate of the TBODu has been made. The CBODu load can be estimated from the stoichiometric relationship between the total organic carbon (TOC) and oxygen, which is 2.67 pounds of oxygen per pound of carbon consumed (Thomann and Mueller, 1987). Since the watershed model does not directly simulate TOC, an indirect estimate of TOC can be made based on the stoichiometric equivalent between organic matter (OM) and carbon. OM can be converted to TOC using a stoichiometric relationship, which is 0.45 times the OM (Cole and Buchak, 1995). Thus, the CBODu can then be determined from the OM by multiplying it by (0.45 x 2.67) or a factor of 1.2.

To convert the ammonia nitrogen (NH₃-N) loads to an oxygen demand, a factor of 4.57 pounds of oxygen per pound of ammonia nitrogen (NH₃-N) oxidized to nitrate nitrogen (NO₃-N) was used (USEPA, 1993). Using this factor is a conservative modeling assumption because it assumes that all the ammonia is converted to nitrate through nitrification, which is not necessarily accurate. The oxygen demand caused by nitrification of ammonia is equal to the NBODu load. Thus, TBODu can be estimated using the revised equation [1] given below:

$$\text{TBODu} = 1.2 \text{ OM} + 4.57 \text{ NH}_3\text{-N} \quad [2]$$

5.2 Critical Condition and Seasonality

40 CFR Section 130 require TMDLs to consider critical environmental conditions and seasonal environmental variations. The requirements are designed to simultaneously ensure that water quality is protected during times when it is most vulnerable and take into account changes in streamflow and loading characteristics as a result of hydrological or climatological variations. These conditions are important because they describe the factors that combine to cause violations of water quality standards and can help identify necessary remedial actions.

5.2.1 Sediment/Siltation

The sediment analysis considered seasonality in the loading through the simulation of monthly watershed loadings based on historic precipitation records. The evaluation of sediment impacts in the lake was considered for the average annual conditions representing the response to long-term, cumulative siltation. The TMDL and load allocation are presented as an annual average loading consistent with the type of impairment (siltation) and water body type (oxbow lake). Reduction of the average annual load is needed to meet water quality standards.

The critical conditions for the sediment TMDL are selected to evaluate the type of impairment (siltation) and the type of water body (oxbow lake). Protection of the lake condition requires the control of long-term loadings and accumulation of sediment. The lake condition is evaluated based on mean siltation rates, in selected locations, in response to long-term annual loading and trapping of sediments in the lake.

5.2.2 Organic Enrichment/Low DO and Nutrients

The organic enrichment/low DO and nutrients analysis considered seasonality in the loading through the simulation of monthly watershed loadings based on historic precipitation records. Long-term simulation of the lake model under varying precipitation and meteorological conditions takes the seasonality into account.

Historic precipitation values for a period of 15 years were evaluated from 1985 to 2000 (Figure 5-1) at the Yazoo City precipitation station (see Figure B-3 in Appendix B for the location of the Yazoo City station). The years 1997 to 2000 were chosen as the TMDL simulation period as these years were not extreme and were close to the annual average precipitation. This period had a wet year in 1997 and a dry year in 2000 (Figure 5-1). Extreme years (very dry or very wet) were not considered for the TMDL. Also, the period from 1997 through 2000 corresponded to the years where the most complete data set of hourly surface airways meteorological data was available from the Jackson, Mississippi, surface airways station (Figure B-3).

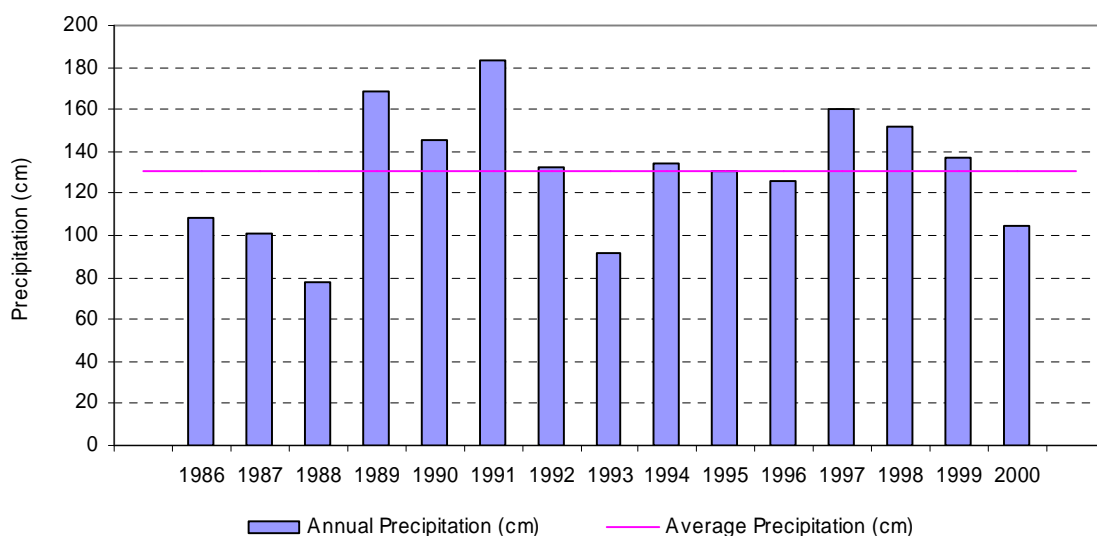


Figure 5-1. Historic Precipitation, 1985 – 2000 (Yazoo City).

Simulation results from the inflake model for this period showed that 1997 was the critical period and meeting the MDEQ DO criteria during this period would be used to determine the TMDL. As shown in Figure 5-2, the simulation period exhibited a wide range of hydrologic conditions with wet a spring and dry summer. Lakes are also typically conducive to eutrophication under these conditions. It can be noted that these years have some relatively dry summer months as well.

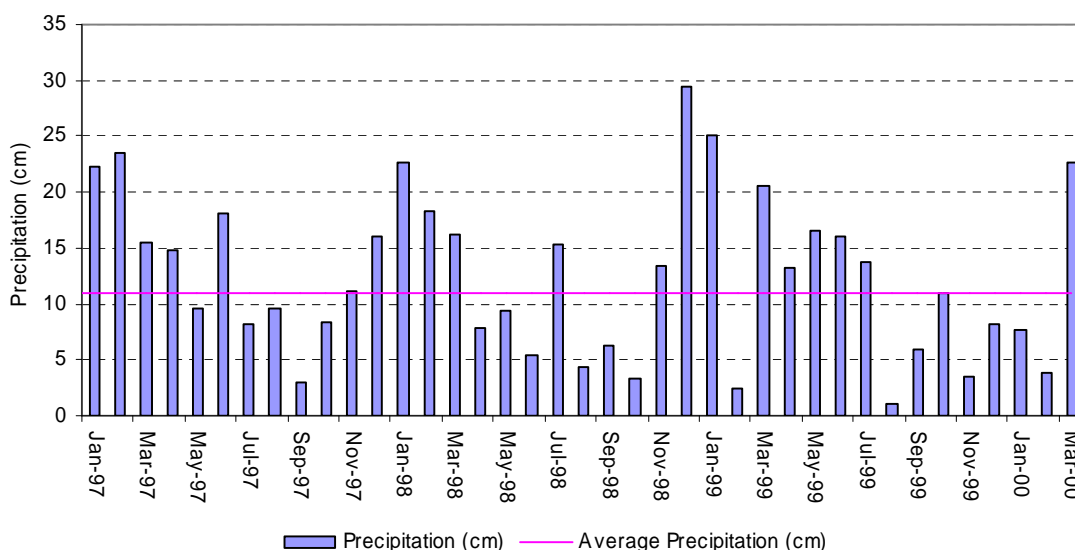


Figure 5-2. Monthly Precipitation 1997-2000 (Yazoo City)

5.3 Sediment Loading Analysis

The sediment loading analysis was based on the long-term average sedimentation rate. Table A-6 in Appendix A provides the computed mean sedimentation rate of the lake for six possible land management scenarios: (1) existing condition (moderate tillage), (2) conventional tillage, (3) 50 percent wooded and moderate tillage, (4) no tillage, (5) 50 percent wooded and no tillage, and (6) 100 percent wooded. The estimated life span of the lake under these six conditions is presented in Figure 5-3.

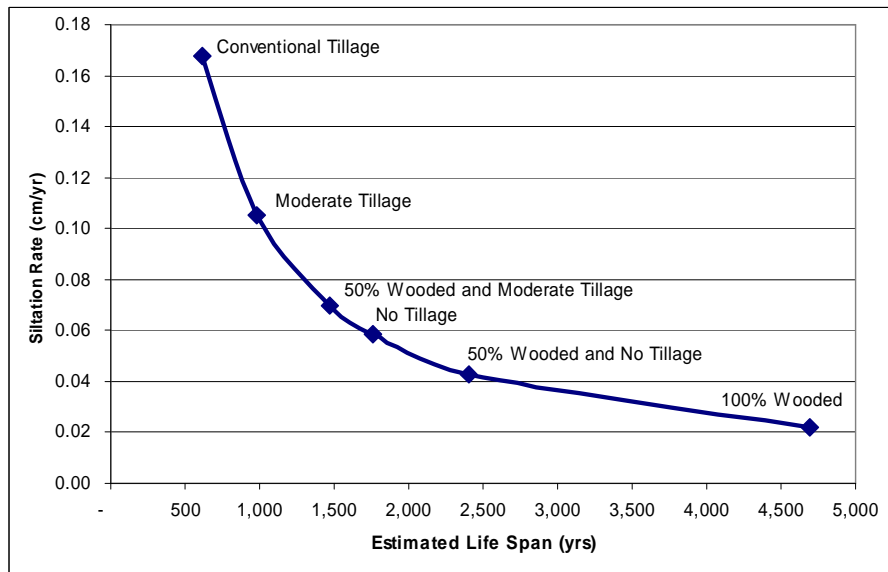


Figure 5-3. Estimated Life Span for Scenarios

These scenarios are based on example land management practices that would result in varying life spans for the lake. The target range was selected in order to achieve a reasonable improvement in sedimentation rates. A range of rates from 0.07 cm/year to 0.04 cm/year was identified as a long-term average sedimentation endpoint. While this range corresponds to the scenarios of 50 percent wooded and moderate tillage to 50 percent wooded and no tillage, this TMDL is not requiring that these particular BMPs be implemented in the watershed. The reductions can be achieved through various combinations of BMPs that could reasonably be put in place in the Bee Lake watershed. This TMDL encourages the use of land management practices, including planting additional forested area and using conservative tillage practices in agricultural areas. As shown in Figure 5-3, the use of these land management practices will significantly extend the life span of Bee Lake.

5.4 TMDL Allocations of Sediment

According to the model, a sedimentation rate of 0.07 cm/year occurred when the sediment load from the watershed was reduced by 33 percent. A sediment load reduction of 60 percent gave an estimated sedimentation rate of 0.04 cm/year. This range of

sedimentation rates is estimated to extend the life span of the lake from approximately 980 years under existing conditions to between 1,400 and 2,400 years.

This reduction was distributed among the different land use categories in the watershed, based on load reduction feasibility (Tables 5-1 and 5-2). No reduction was applied to the “other” land use category, which was considered a background (non-anthropogenic) land use. The “other” land use category consists of bottomland hardwood forests, shrubs, woods, and swamp. Additionally no reduction was applied to the “residential” land use category since residential land use in the Bee Lake watershed was negligible and comprised of less than 1 percent of the total land use in the watershed. Although the sediment load from the “Aquaculture” category is small, it was reduced because its contribution was significant in terms of oxygen-demanding substances.

Table 5-1. Load Reduction Scenario - Sedimentation Rate of 0.07 cm/year

LAND USE	BASELINE (ton/yr)	REDUCTION (ton/yr)	REDUCTION (%)
Agriculture Cultivated	4,770	1,685	35
Agriculture Noncultivated	331	117	35
Aquaculture	2	0	0
Residential	28	0	0
Other	216	0	0
Total	5,347	1,802	33

Table 5-2. Load Reduction Scenario - Sedimentation Rate of 0.04 cm/year

LAND USE	BASELINE (ton/yr)	REDUCTION (ton/yr)	REDUCTION (%)
Agriculture Cultivated	4,770	2,987	63
Agriculture Noncultivated	331	207	63
Aquaculture	2	0	0
Residential	28	0	0
Other	216	0	0
Total	5,347	3,194	60

The TMDLs for the selected range of sedimentation rates are presented in Tables 5-3 and 5-4. Based on the model, the sediment load to achieve a sedimentation rate of 0.07 cm/year is 0.33 ton/acre/year, and the sediment load to achieve a sedimentation rate of 0.04 cm/year is approximately 0.20 ton/acre/year. It should be stressed that these numbers are only approximations, based on an interpretation of the limited data available for Bee Lake. There were many assumptions and limitations used in calculating these loads. Collection of additional data or the consideration of other land use management scenarios may result in refinement or modifications of the TMDLs.

Table 5-3. TMDL for Sedimentation Rate of 0.07 cm/year for Bee Lake

Pollutant	WLA (ton/year)	LA (ton/acre/year)	MOS (ton/acre/year)	TMDL (ton/acre/year)
Sediment	0.33	0.33	Implicit	0.33

Table 5-4. TMDL for Sedimentation Rate of 0.04 cm/year for Bee Lake

Pollutant	WLA (ton/acre/year)	LA (ton/acre/year)	MOS (ton/acre/year)	TMDL (ton/acre/year)
Sediment	0.20	0.20	Implicit	0.20

5.5 TMDL Allocations of TBOD_u

No reduction in the annual watershed loading is recommended to achieve the inflake DO criteria. The percent contribution of TBOD_u is distributed among the different land use categories in the watershed (Table 5-5).

Table 5-5. Percent Contribution of TBOD_u

LAND USE	BASELINE	
	NBOD_u (lb/day)	CBOD_u (lb/day)
Agriculture cultivated	65	116
Agriculture noncultivated	13.1	21.1
Aquaculture	0.2	0.2
Other	5.2	9.1
Residential	1.5	2.5
Total	85	149

Based on the baseline loads, the TBOD_u was computed using equation [2] described in Section 5.1.2, and the TMDL is presented in Table 5-6. The TMDL for TBOD_u was computed to be approximately 234 lb/day.

Table 5-6. TMDL for TBOD_u for Bee Lake

Pollutant	WLA (lb/day)	LA (lb/day)	MOS (lb/day)	TMDL (lb/day)
CBOD _u	0	149	Implicit	149
NBOD _u	0	85	Implicit	85
TBOD _u	0	234	Implicit	234

5.6 Margin of Safety

The MOS is one of the required elements of a TMDL. There are two basic methods for incorporating the MOS (USEPA, 1991):

- Implicitly incorporate the MOS using conservative model assumptions to develop allocations.
- Explicitly specify a portion of the total TMDL as the MOS; use the remainder for allocations.

The margin of safety for this TMDL was expressed implicitly through implicit conservative assumptions that provide a margin of safety. Specific conservative assumptions include:

- The loadings calculated by the nonpoint source model (GWLF) were derived using conservative assumptions in the selection of nutrient potency and sediment loading factors.
- The use of conservative assumptions in developing the loading model results in relatively high loads and slightly larger required load reductions.

5.7 Reasonable Assurance

This component of TMDL development does not apply. There are no point sources requesting a reduction based on LA components and reductions.

5.8 Public Participation

This TMDL will be published for a 30-day public notice period. During this time, the public will be notified by publication in the statewide newspaper. The public will be given an opportunity to review the TMDL and submit comments. MDEQ also distributes all TMDLs at the beginning of the public notice period to those members of the public who have requested to be included on a TMDL mailing list. TMDL mailing list members may ask to receive the TMDL reports through either, email or the postal service. Anyone wishing to be included on the TMDL mailing list should contact Greg Jackson at (601) 961-5098 or Greg_Jackson@deq.state.ms.us.

All comments received during the public notice period and at any public hearings become a part of the record of this TMDL. All comments will be considered in the submission of this TMDL to EPA Region 4 for final approval.

5.9 Future Monitoring

MDEQ has adopted the Basin Approach to Water Quality Management, a plan that divides Mississippi's major drainage basins into five groups. During each yearlong cycle, MDEQ's resources for water quality monitoring will be focused on one of the basin groups. During the next monitoring phase in the Yazoo Basin, Bee Lake may undergo additional monitoring to identify any change in water quality. The additional monitoring may allow refinements of the assumptions used to calculate this TMDL.

5.10 Conclusion

To evaluate the relationship between the sources, their loading characteristics, and the resulting conditions in the lake, a combination of analytical tools was used. This involved a source response linkage between the GWLF watershed model for the Bee Lake watershed and a 2-dimensional inflake water quality model CE-QUAL-W2 for Bee Lake. The sediment load estimates from the GWLF model were used in the sedimentation rate analysis for the lake. The sedimentation rate analysis was based on a

long-term average sedimentation rate that assessed a range of land management practices. A range of 0.07 cm/year to 0.04 cm/year was identified as a long-term average sedimentation endpoint based on the example land management scenarios included in this TMDL.

No reduction in the oxygen-demanding source loadings coming from the watershed is needed to meet the prescribed DO criteria of a daily average of 5 mg/L. However, it is recommended that additional loading, including NPDES-permitted sources, not be allowed in the lake in the future. A 33 to 60 percent reduction of sediment load was also recommended to address the siltation loading. The sediment TMDL was computed to be approximately 0.33 ton/acre/year to 0.20 ton/acre/year of sediment for the range of selected endpoints. The organic enrichment/low DO TMDL for TBODu was computed to be approximately 234 lb/day.

Bibliography

- Arthur, J. Kerry. 2001. *Hydrogeology, Model Description, and Flow Analysis of the Mississippi River Alluvial Aquifer in Northwestern Mississippi*: United States Geological Survey Water-Resources Investigations Report 01-4035.
- Bingner, R.L. and F.D. Theurer. 2001. *Annagnps Technical Processes*. National Sedimentation Laboratory, Oxford, MS.
- Chapra, Steven C. 1997. *Surface water-quality modeling*. McGraw-Hill Companies, Inc., New York, NY.
- ClarionLedger.com. 1999. *Community Spotlight: Yazoo County*. <<http://www.clarionledger.com/misshomes/community/yazoo>>. Accessed April 4, 2003.
- Cole, T.M., and E.M. Buchak. 1995. *CE-QUAL-W2: A Two-Dimensional Laterally Averaged, Hydrodynamic And Water Quality Model, Version 2.0*. Instructional Report EL-95-draft. U.S. Army Corps of Engineers, Waterway Experiment Station, Vicksburg, MS.
- Ernst, M.R., W. Frossard, and J.L. Mancini. 1994. Two eutrophication models make the grade. *Water Environment Technology*. November 15-16.
- Evans, Rob. No date. Rob Evans – *Sharkey County, Mississippi*. <<http://www2.msstate.edu/~rce6/homeag.html>>. Accessed April 4, 2003.
- FTN Associates, Ltd. 1991. *Final Report For Wolf Lake – Phase I Diagnostic/Feasibility Study*. Prepared for the MDEQ, Mississippi Office of Pollution Control.
- Haith, D.A., and L.L. Shoemaker. 1987. Generalized watershed loading functions for streamflow nutrients. *Water Resources Bulletin* 23(3):471-478.
- Hargreaves, J. A., C. E. Boyd, and C. S. Tucker. 2002. *Water Budgets for Aquaculture Production*. In *Aquaculture and the Environment in the United States*. U.S. Aquaculture Society, A Chapter of the World Aquaculture Society, Baton Rouge, LA.
- Kleiss, Barbara A., Richard H. Coupe, Gerard J. Gonthier and Billy G. Justus 1999. *Water quality in the Mississippi embayment, Mississippi, Louisiana, Arkansas, Missouri, Tennessee and Kentucky 1995-1998*: U.S. Geological Survey Water Resources Circular 1208.
- MDEQ, Mississippi Office of Pollution Control. 2002. *State Of Mississippi Water Quality Criteria For Intrastate, Interstate And Coastal Waters*.

MDEQ, Mississippi Office of Pollution Control. 1999. Mississippi 1998 *Water Quality Assessment: Federal Clean Water Act Section 305(B) Report*.

MDEQ, Mississippi Office of Pollution Control. 1999. Mississippi 1998 *Water Quality Assessment: Federal Clean Water Act Section 303(D) Report*.

MESC (Mississippi Employment Security Commission). 2002. *Labor Market Information: Annual Averages*. <http://www.mesc.state.ms.us/lmi>. Accessed April 1, 2003.

Mississippi Natural Heritage Program. 2000. *Special Animals Tracking List*. Museum of Natural Science, Mississippi Department of Wildlife, Fisheries, and Parks, Jackson, MS. 12 pp.

Mississippi Outfitters. 2001. *Bee Lake*. <<http://www.outfitters.org>. Accessed March 31, 2003.

Mississippi State Climatologist. 2003. <http://www.msstate.edu/dept/GeoSciences/climate/> Accessed April 4, 2003.

Monroe, James S., Reed Wicander. 1992. *Physical Geology, Exploring The Earth*. West Publishing Company. St. Paul MN.

Occupational Safety and Health Administration (OSHA). 2001. *SIC Division I: Services*. <<http://www.osha.gov/cgi-bin/sic/sicser3?l>>. Accessed May 15, 2001.

Ricklefs, Robert E., 1990. *Ecology*, 3rd Ed. W.H. Freeman and Company, New York, NY.

Thomann, Robert V., John A. Mueller. 1987. *Principals Of Surface Water Quality Modeling And Control*. HarperCollins Publishers, Inc., New York, NY.

Tucker, C. 2003. Personal communication, April 2, 2003 National Warmwater Aquaculture Center

Tucker, C.S., S.K. Kingsbury, J.W. Pote, C.L. Wax. 1996. *Effects Of Water Management Practices On Nutrients And Organic Matter From Channel Catfish (Ictalurus Punctatus) Ponds*. *Aquaculture* 147: 56-69

USACE (United States Army Corps of Engineers), 1989. *Engineering and Design - Sedimentation Investigations of Rivers and Reservoirs*. EM 1110-2-4000. Washington, DC

USEPA (United States Environmental Protection Agency). 1999a. *Protocol For Developing Total Maximum Daily Loads, Book 2, Streams And Rivers, Part 1*,

Biochemical Oxygen Demand/Dissolved Oxygen And Nutrients/Eutrophication. Section 4.2.1.2. EPA 823-B-097-002. U.S. Environmental Protection Agency, Washington, DC.

USEPA (United States Environmental Protection Agency). 1999b. *Protocol For Developing Nutrient TMDLs*. EPA 841-B-99-007. U.S. Environmental Protection Agency, Washington, DC.

USEPA (United States Environmental Protection Agency). 1993. *Manual: Nitrogen Control*. Office of Research and Development, EPA /625/R-93/010. U.S. Environmental Protection Agency, Washington, DC.

USEPA (United States Environmental Protection Agency). 1991. *Guidance For Water Quality-Based Decisions: The TMDL Process*. Office of Water, EPA 440/4-91-001. U.S. Environmental Protection Agency, Washington, DC.

USEPA (United States Environmental Protection Agency). 1985. *Rates, Constants And Kinetics Formulations In Surface Water Quality Modeling (2nd Ed)*. Office of Research and Development, EPA/600/3-85/040. Environmental Research Laboratory, Athens GA.

USDOC, BEA (U.S. Department of Commerce, Bureau of Economic Analysis). 2002. *Total Full-Time And Part-Time Employment By Industry*. <<http://www.bea.doc.gov/bea/regional/reis/action.cfm>>. Accessed March 31, 2003.

USDOC, Census (U.S. Department of Commerce, Bureau of the Census). 2002. *State and County QuickFacts*. <<http://www.census.gov>>. Accessed March 31, 2002.

USDOC, Census (U.S. Department of Commerce, Bureau of the Census). 2001. *Profile Of General Demographic Characteristics: 2000*. <http://www.census.gov>. Accessed March 31, 2003.

Walker, W.W. 1985. *Empirical Methods For Predicting Eutrophication In Impoundments*. USACE Technical Report E-81-9.

Wetzel, Robert G. 1983. *Limnology*, 2nd Ed. Saunders College Publishing, Orlando, FL.

Yuan, Y. and R. L. Bingner. 2002. *Assessment Of Best Management Practices For Water Quality Improvement For The Deep Hollow Watershed In Mississippi Delta MSEA Project Using AGNPS 2001*. NSL Technical Report No. 28.

Definitions

Ammonia: Inorganic form of nitrogen (NH_3); product of hydrolysis of organic nitrogen and denitrification. Ammonia is preferentially used by phytoplankton over nitrate for uptake of inorganic nitrogen.

Ammonia Nitrogen: The measured ammonia concentration reported in terms of equivalent ammonia concentration; also called total ammonia as nitrogen ($\text{NH}_3\text{-N}$)

Ammonia Toxicity: Under specific conditions of temperature and pH, the un-ionized component of ammonia can be toxic to aquatic life. The un-ionized component of ammonia increases with pH and temperature.

Ambient Stations: A network of fixed monitoring stations established for systematic water quality sampling at regular intervals, and for uniform parametric coverage over a long-term period.

Assimilative Capacity: The capacity of a body of water or soil-plant system to receive wastewater effluents or sludge without violating the provisions of the State of Mississippi Water Quality Criteria for Intrastate, Interstate, and Coastal Waters and Water Quality regulations.

Background: The condition of waters in the absence of man-induced alterations based on the best scientific information available to MDEQ. The establishment of natural background for an altered water body may be based upon a similar, unaltered or least impaired, water body or on historical pre-alteration data.

Biological Impairment: Condition in which at least one biological assemblage (e.g., fish, macroinvertebrates, or algae) indicates less than full support with moderate to severe modification of biological community noted.

Carbonaceous Biochemical Oxygen Demand: Also called CBOD_u, the amount of oxygen consumed by microorganisms while stabilizing or degrading carbonaceous compounds under aerobic conditions over an extended time period.

Calibrated Model: A model in which reaction rates and inputs are significantly based on actual measurements using data from surveys on the receiving water body.

Critical Condition: Hydrologic and atmospheric conditions in which the pollutants causing impairment of a water body have their greatest potential for adverse effects.

Daily Discharge: The “discharge of a pollutant” measured during a calendar day or any 24-hour period that reasonably represents the calendar day for the purposes of sampling. For pollutants with limitations expressed in units of mass, the daily discharge is calculated as the total mass of the pollutant discharged over the day. For pollutants with limitations expressed in other units of measurement, the daily average is calculated as the average.

Designated Use: Use specified in water quality standards for each water body or segment regardless of actual attainment.

Discharge Monitoring Report: Report of effluent characteristics submitted by an NPDES-permitted facility.

Dissolved Oxygen: The amount of oxygen dissolved in water. It also refers to a measure of the amount of oxygen that is available for biochemical activity in a water body. The maximum concentration of dissolved oxygen in a water body depends on temperature, atmospheric pressure, and dissolved solids.

Dissolved Oxygen Deficit: The saturation dissolved oxygen concentration minus the actual dissolved oxygen concentration.

DO Sag: Longitudinal variation of dissolved oxygen representing the oxygen depletion and recovery following a waste load discharge into a receiving water.

Effluent Standards and Limitations: All state or federal effluent standards and limitations on quantities, rates, and concentrations of chemical, physical, biological, and other constituents to which a waste or wastewater discharge may be subject under the federal act or the state law. This includes, but is not limited to, effluent limitations, standards of performance, toxic effluent standards and prohibitions, pretreatment standards, and schedules of compliance.

Effluent: Treated wastewater flowing out of the treatment facilities.

First Order Kinetics: Describes a reaction in which the rate of transformation of a pollutant is proportional to the amount of that pollutant in the environmental system.

5-Day Biochemical Oxygen Demand: Also called BOD₅, the amount of oxygen consumed by microorganisms while stabilizing or degrading carbonaceous or nitrogenous compounds under aerobic conditions over a period of 5 days.

Groundwater: Subsurface water in the zone of saturation. Groundwater infiltration describes the rate and amount of movement of water from a saturated formation.

Impaired Water body: Any water body that does not attain water quality standards due to an individual pollutant, multiple pollutants, pollution, or an unknown cause of impairment.

Land Surface Runoff: Water that flows into the receiving stream after application by rainfall or irrigation. It is a transport method for nonpoint source pollution from the land surface to the receiving stream.

Load Allocation (LA): The portion of a receiving water's loading capacity attributed to or assigned to nonpoint sources (NPS) or background sources of a pollutant

Loading: The total amount of pollutants entering a stream from one or multiple sources.

Mass Balance: An equation that accounts for the flux of mass going into a defined area and the flux of mass leaving a defined area; the flux in must equal the flux out.

Nonpoint Source: Pollution contained in runoff from the land. Rainfall, snowmelt, and other water that does not evaporate become surface runoff and either drain into surface waters or soak into the soil and finds their way into groundwater. This surface water may contain pollutants that come from land use activities such as agriculture, construction, silviculture, surface mining, disposal of wastewater, hydrologic modifications, and urban development.

Nitrification: The oxidation of ammonium salts to nitrites via *Nitrosomonas* bacteria and the further oxidation of nitrite to nitrate via *Nitrobacter* bacteria.

Nitrogenous Biochemical Oxygen Demand: Also called NBODu, the amount of oxygen consumed by microorganisms while stabilizing or degrading nitrogenous compounds under aerobic conditions over an extended time period.

NPDES Permit: An individual or general permit issued by the Mississippi Environmental Quality Permit Board pursuant to regulations adopted by the Mississippi Commission on Environmental Quality under Mississippi Code Annotated (as amended) §§ 49-17-17 and 49-17-29 for discharges into state waters.

Photosynthesis: The biochemical synthesis of carbohydrate-based organic compounds from water and carbon dioxide using light energy in the presence of chlorophyll.

Point Source: Pollution loads discharged at a specific location from pipes, outfalls, and conveyance channels from either wastewater treatment plants or industrial waste treatment facilities. Point sources can also include pollutant loads contributed by tributaries to the main receiving stream.

Pollution: Contamination, or other alteration of the physical, chemical, or biological properties, of any waters of the state, including change in temperature, taste, color, turbidity, or odor of the waters, or such discharge of any liquid, gaseous, solid, radioactive, or other substance, or leaks into any waters of the state, unless in compliance with a valid permit issued by the Permit Board.

Publicly Owned Treatment Works (POTW): A waste treatment facility owned and/or operated by a public body or a privately owned treatment works, which accepts discharges, which would otherwise be subject to Federal Pretreatment Requirements.

Reaeration: The net flux of oxygen occurring from the atmosphere to a body of water across the water surface.

Regression Coefficient: An expression of the functional relationship between two correlated variables that is often empirically determined from data, and is used to predict values of one variable when given values of the other variable.

Respiration: The biochemical process by means of which cellular fuels are oxidized with the aid of oxygen to permit the release of energy required to sustain life. During respiration, oxygen is consumed and carbon dioxide is released.

Sediment Oxygen Demand: The solids discharged to a receiving water are partly organics, which upon settling to the bottom decompose aerobically, removing oxygen from the surrounding water column.

Storm Runoff: Rainfall that does not evaporate or infiltrate the ground because of impervious land surfaces or a soil infiltration rate slower than rainfall intensity, but instead flows into adjacent land or water bodies or is routed into a drain or sewer system.

Streeter-Phelps DO Sag Equation: An equation, which uses a mass balance approach to determine the DO concentration in a water body downstream of a point source discharge. The equation assumes that the stream flow is constant and that CBODu exertion is the only source of DO deficit while reaeration is the only sink of DO deficit.

Total Ultimate Biochemical Oxygen Demand: Also called TBODu, the amount of oxygen consumed by microorganisms while stabilizing or degrading carbonaceous or nitrogenous compounds under aerobic conditions over an extended time period.

Total Kjeldahl Nitrogen: Also called TKN, organic nitrogen plus ammonia nitrogen.

Total Maximum Daily Load or TMDL: The calculated maximum permissible pollutant loading to a water body at which water quality standards can be maintained.

Waste: Sewage, industrial wastes, oil field wastes, and all other liquid, gaseous, solid, radioactive, or other substances that may pollute or tend to pollute any waters of the State.

Waste load Allocation (WLA): The portion of a receiving waters loading capacity attributed to or assigned to point sources of a pollutant.

Water Quality Standards: The criteria and requirements set forth in State of Mississippi Water Quality Criteria for Intrastate, Interstate, and Coastal Waters. Water quality standards are standards composed of designated present and future most beneficial uses (classification of waters), the numerical and narrative criteria applied to the specific water uses or classification, and the Mississippi antidegradation policy.

Water Quality Criteria: Elements of state water quality standards, expressed as constituent concentrations, levels, or narrative statements, representing a quality of water that supports the present and future most beneficial uses.

Waters of the State: All waters within the jurisdiction of this state, including all streams, lakes, ponds, wetlands, impounding reservoirs, marshes, watercourses, waterways, wells, springs, irrigation systems, drainage systems, and all other bodies or accumulations of water, surface and underground, natural or artificial, situated wholly or partly within or bordering upon the state, and such coastal waters as are within the jurisdiction of the state, except lakes, ponds, or other surface waters which are wholly landlocked and privately owned, and which are not regulated under the Federal Clean Water Act (33 U.S.C.1251 et seq.).

Watershed: The area of land draining into a stream at a given location.

Abbreviations

BASINS.....	Better Assessment Science Integrating Point and Nonpoint Sources
BMP	Best Management Practice
CBOD ₅	5-Day Carbonaceous Biochemical Oxygen Demand
CBOD _u	Carbonaceous Ultimate Biochemical Oxygen Demand
CWA	Clean Water Act
DMR.....	Discharge Monitoring Report
US EPA	U.S. Environmental Protection Agency
GIS	Geographic Information System
HUC	Hydrologic Unit Code
LA.....	Load Allocation
MARIS	Mississippi Automated Resource Information System
MDEQ.....	Mississippi Department of Environmental Quality
MGD.....	Million Gallons per Day
MOS.....	Margin of Safety
NBOD _u	Nitrogenous Ultimate Biochemical Oxygen Demand
NH ₃	Total Ammonia
NH ₃ -N.....	Total Ammonia as Nitrogen
NO ₂ + NO ₃	Nitrite Plus Nitrate
NPDES	National Pollutant Discharge Elimination System
RBA.....	Rapid Biological Assessment
7Q10.....	7-Day Average Low Stream Flow with a 10-Year Occurrence Period
TBOD ₅	5-Day Total Biochemical Oxygen Demand
TBOD _u	Total Ultimate Biochemical Oxygen Demand
TKN.....	Total Kjeldahl Nitrogen
TN.....	Total Nitrogen
TOC.....	Total Organic Carbon
TP	Total Phosphorus
USGS.....	United States Geological Survey
WLA.....	Waste Load Allocation