

Total Maximum Daily Load

**Thompson Creek Watershed
Including West Little Thompson Creek
for**

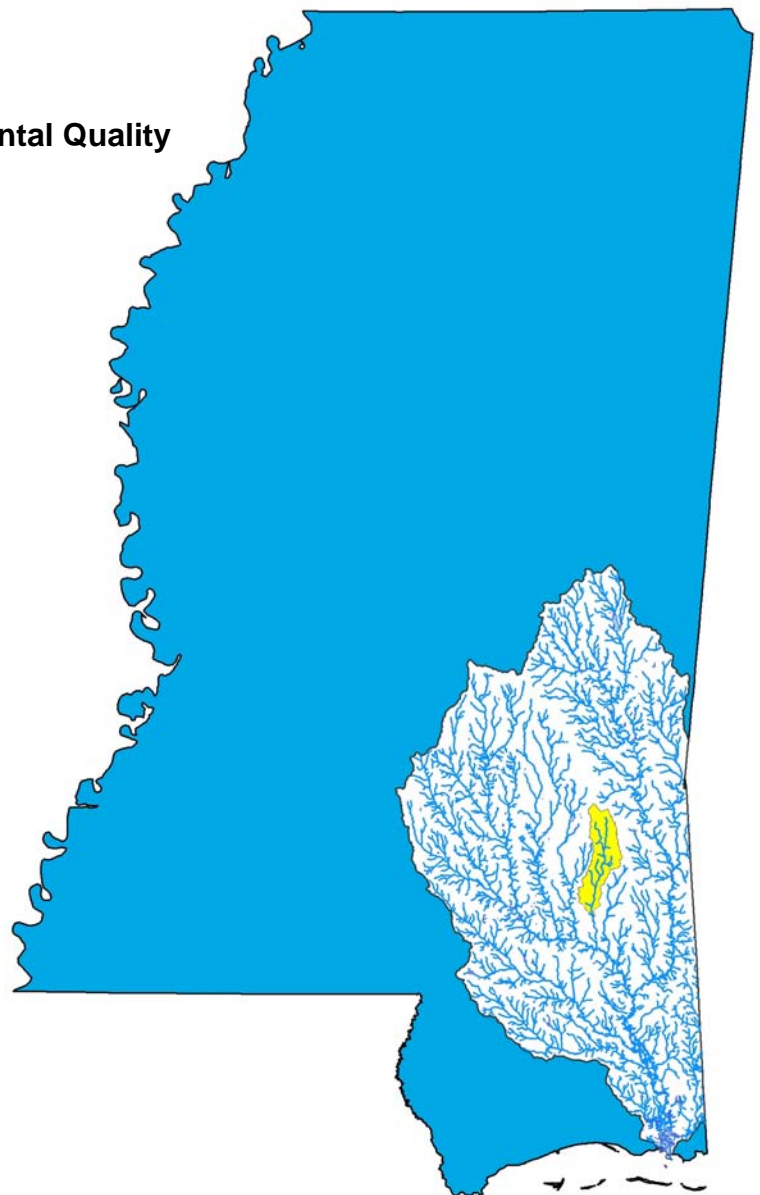
Biological Impairment Due to Sediment

Pascagoula River Basin

Prepared By

**Mississippi Department of Environmental Quality
Office of Pollution Control
TMDL/WLA Branch**

**MDEQ
PO Box 10385
Jackson, MS 39289-0385
(601) 961-5171
www.deq.state.ms.us**



FOREWORD

This report contains one or more Total Maximum Daily Loads (TMDLs) for water body segments found on Mississippi’s 1996 Section 303(d) List of Impaired Waterbodies. Because of the accelerated schedule required by the consent decree, many of these TMDLs have been prepared out of sequence with the State’s rotating basin approach. The implementation of the TMDLs contained herein will be prioritized within Mississippi’s rotating basin approach.

The amount and quality of the data on which this report is based are limited. As additional information becomes available, the TMDLs may be updated. Such additional information may include water quality and quantity data, changes in pollutant loadings, or changes in landuse within the watershed. In some cases, additional water quality data may indicate that no impairment exists.

Conversion Factors

To convert from	To	Multiply by	To convert from	To	Multiply by
mile ²	acre	640	acre	ft ²	43560
km ²	acre	247.1	days	seconds	86400
m ³	ft ³	35.3	meters	feet	3.28
ft ³	gallons	7.48	ft ³	gallons	7.48
ft ³	liters	28.3	hectares	acres	2.47
cfs	gal/min	448.8	miles	meters	1609.3
cfs	MGD	0.646	tonnes	tons	1.1
m ³	gallons	264.2	µg/l * cfs	gm/day	2.45
m ³	liters	1000	µg/l * MGD	gm/day	3.79

Fraction	Prefix	Symbol	Multiple	Prefix	Symbol
10 ⁻¹	deci	d	10	deka	da
10 ⁻²	centi	c	10 ²	hecto	h
10 ⁻³	milli	m	10 ³	kilo	k
10 ⁻⁶	micro	:	10 ⁶	mega	M
10 ⁻⁹	nano	n	10 ⁹	giga	G
10 ⁻¹²	pico	p	10 ¹²	tera	T
10 ⁻¹⁵	femto	f	10 ¹⁵	peta	P
10 ⁻¹⁸	atto	a	10 ¹⁸	exa	E

CONTENTS

TMDL INFORMATION PAGE.....	v
EXECUTIVE SUMMARY	vi
1.0 INTRODUCTION	1
1.1 Background.....	1
1.2 Stressor Identification.....	2
1.3 Applicable Water Body Segment Use	2
1.4 Applicable Water Body Segment Standard	3
2.0 TMDL ENDPOINT AND WATER QUALITY ASSESSMENT	4
2.1 Selection of a TMDL Endpoint and Critical Condition.....	4
3.0 SOURCE ASSESSMENT and LOAD ESTIMATION	5
3.1 Assessment of Point Sources	5
3.2 Assessment of Nonpoint Sources	6
3.3 Load Estimation.....	8
4.0 DETERMINING THE TARGET SEDIMENT LOAD	9
4.1 Selecting a Reference Condition (Simon, et al., 2002a).....	9
4.2 Analysis of Available Suspended-Sediment Data (Simon, et al., 2002a)	11
4.3 Target Sediment Yields	12
5.0 ALLOCATION.....	14
5.1 Wasteload Allocations	14
5.2 Load Allocations.....	14
5.3 Incorporation of a Margin of Safety (MOS).....	15
5.4 Calculation of the TMDL	15
5.5 Seasonality	16
5.6 Reasonable Assurance	16
6.0 CONCLUSION.....	17
6.1 Future Activities	17
6.2 Public Participation.....	17
DEFINITIONS.....	18
ABBREVIATIONS	24
REFERENCES	25

FIGURES

Figure 1.	Location of the Thompson Creek and West Little Thompson Creek Watersheds	1
Figure 2.	Thompson Creek and West Little Thompson Creek Watersheds with §303(d) Listed Segments	2
Figure 3.	Thompson Creek Watershed Landuse Distribution	7
Figure 4.	West Little Thompson Creek Watershed Landuse Distribution	7
Figure 5.	Six Stages of Channel Evolution (Simon and Hupp, 1986)	11
Figure 6.	Thompson Creek and West Little Thompson Creek Watersheds with Level IV Ecoregions	13

TABLES

Table i.	Listing Information	v
Table ii.	Water Quality Standard	v
Table iii.	Total Maximum Daily Loads	v
Table 1.	Thompson Creek Watershed Landuse Distribution	6
Table 2.	West Little Thompson Creek Watershed Landuse Distribution	6
Table 3.	Unstable Stream Sediment Yield Ranges for Level IV Ecoregions within the Pascagoula River Basin	8
Table 4.	Stable Stream Sediment Yield Ranges for Level IV Ecoregions within the Pascagoula River Basin	12
Table 5.	TMDL Yields	15

TMDL INFORMATION PAGE

Table i. Listing Information

Name	ID	County	HUC	Cause	Mon/Eval
Thompson Creek	MS093T2E	Perry	03170005	Biological Impairment	Monitored
Near Richton: From headwaters to confluence with Pine Creek					
West Little Thompson Creek	MS093T1E	Wayne	03170005	Biological Impairment	Monitored
Near Good Hope: From headwaters to mouth at Thompson Creek					

Table ii. Water Quality Standard

Parameter	Beneficial use	Narrative Water Quality Criteria
Sediment/Siltation	Aquatic Life Support	Waters shall be free from materials attributable to municipal, industrial, agricultural, or other dischargers producing color, odor, taste, total suspended solids, or other conditions in such degree as to create a nuisance, render the waters injurious to public health, recreation, or to aquatic life and wildlife, or adversely affect the palatability of fish, aesthetic quality, or impair the waters for any designated uses.

Table iii. Total Maximum Daily Loads

Segment	WLA	LA	MOS	TMDL
MS093T2E	5.88E-03 to 1.05E-02*	5.88E-03 to 1.05E-02*	implicit	5.88E-03 to 1.05E-02*
MS093T1E	5.73E-03 to 1.44E-02*	5.73E-03 to 1.44E-02*	implicit	5.73E-03 to 1.44E-02*

*tons per acre per day at the effective discharge

Note: TMDL targets are based on level IV ecoregions. If multiple level IV ecoregions are present in the watershed, the target is a weighted average of those ecoregions.

EXECUTIVE SUMMARY

MDEQ has conducted statewide biological monitoring using benthic macroinvertebrates as the indicator to develop a regionally-calibrated Index of Biological Integrity (IBI) for wadable streams. This index, now known as the Mississippi Benthic Index of Stream Quality (M-BISQ), was then used in the biological assessment of the State's wadable streams and rivers including Thompson Creek and West Little Thompson Creek. Based on the M-BISQ scores, these water bodies were determined to be impaired. Therefore, Thompson Creek (MS093T2E) and West Little Thompson Creek (MS093T1E) are on the Mississippi 2002 Section 303(d) List of Water Bodies for biological impairment (MDEQ, 2002a). Stressor identification studies were then completed for the Thompson Creek watershed and the West Little Thompson Creek watershed to determine the most likely cause(s) of the impairments. These analyses identified sediment as the most probable stressor of each water body. This TMDL is being completed for clean sediment. Certain contaminants may be associated with sediment such as pesticides and nutrients. These contaminants are not being addressed directly within this TMDL. However, these contaminants would also be controlled by the same best management practices (BMPs) that control the sediment coming from fields.

The *State of Mississippi Water Quality Criteria for Intrastate, Interstate, and Coastal Waters* regulation does not include a numerical water quality standard for aquatic life protection due to sediment (MDEQ, 2002b). The narrative standard for the protection of aquatic life is sufficient for justification of TMDL development, but does not provide a quantifiable TMDL target. The targets for this TMDL are based on reference sediment yields developed by the Channel and Watershed Processes Research Unit (CWPRU) at the National Sedimentation Laboratory (NSL).

CWPRU developed reference sediment yields, or targets, for each level III ecoregion within Mississippi and EPA Region 4. These yields were derived from the empirical analysis of historical flow and sediment transport data for stable streams in each level III ecoregion. These targets were used by MDEQ in the development of the James Creek Sediment TMDL (MDEQ, 2003b) and multiple sediment TMDLs within the Yazoo River Basin. The methods used to develop the level III reference yields are described in detail in the reports titled, "*Reference*" and "*Impacted*" *Rates of Suspended-Sediment Transport for Use in Developing Clean Sediment TMDLs: Mississippi and the Southeastern United States* (Simon, et al., 2002b) and *Actual and Reference Sediment Yields for the James Creek Watershed – Mississippi* (Simon, et al., 2002a).

Recently CWPRU refined the level III reference sediment yields for each level IV ecoregion within the Pascagoula River Basin. There are multiple level IV ecoregions within each level III ecoregion. To obtain the level IV reference yields CWPRU applied the same methods used to develop the level III targets discussed above. The reference loads, or TMDL targets, for this TMDL were derived from the empirical analysis of historical flow and sediment transport data for stable streams in the appropriate level IV ecoregions for the Thompson Creek and West Little Thompson Creek watersheds, which are the Southern Hilly Gulf Coastal Plain (65d) and the Southern Pine Plains and Hills (65f).

According to 40 CFR §130.2 (i), TMDLs can be expressed in terms of mass per time, toxicity, or other appropriate measure. This TMDL is expressed as the tons of sediment that can be discharged from an acre of a subwatershed during a day (tons/acre/day) at the effective discharge and still attain the applicable water quality standard. This results in a range of acceptable reference yields of 5.88E-03 to 1.05E-02 tons per acre per day at the effective discharge for Thompson Creek and 5.73E-03 to 1.44E-02 tons per acre per day at the effective discharge for West Little Thompson Creek.

It is expected that all values within these ranges will result in attainment of water quality standards. The TMDL ranges are expressed at the effective discharge. The effective discharge is the channel-forming flow or the flow that moves the most sediment. The effective discharge is obtained by combining flow frequency data with sediment transport relationships. These TMDL ranges are not applicable on an annual basis, because the effective discharge only occurs statistically once every one and a half years, not on a daily basis. However, because the effective discharge is the critical condition, compliance with the TMDL at effective discharge will result in the attainment of the water quality standards at all times.

For many §303(d) listed streams in the Pascagoula River Basin, including Thompson Creek and West Little Thompson Creek, sediment data were either not available or were insufficient to calibrate a water quality model for prediction of existing sediment loads. Therefore, this TMDL does not provide an existing load specific to each water body. However, a source assessment is included. In addition, CWPRU also estimated the typical range for unstable streams within each level IV ecoregion in the Pascagoula River Basin. A range of unstable values was assigned to Thompson Creek and West Little Thompson Creek based on the level IV ecoregions within the drainage area of each water body. These unstable ranges are representative of the existing loads that would be expected for Thompson Creek and West Little Thompson Creek. The unstable range for Thompson Creek is 1.15E-02 to 2.17E-02 tons per acre per day at the effective discharge. The unstable range for West Little Thompson Creek is 9.43E-03 to 2.37E-02 tons per acre per day at the effective discharge. The unstable yields are larger than the target yields, therefore, a reduction plan is recommended for the Thompson Creek and West Little Thompson Creek watersheds. Based on the ranges of stable and unstable yield values, a reduction of 49% to 52% is needed in the Thompson Creek watershed, and a reduction of 39% is needed in the West Little Thompson Creek watershed.

1.0 INTRODUCTION

1.1 Background

The identification of water bodies not meeting their designated use and the development of total maximum daily loads (TMDLs) for those water bodies are required by Section 303(d) of the Clean Water Act (CWA) and the Environmental Protection Agency’s (EPA) Water Quality Planning and Management Regulations (40 CFR part 130). The TMDL process is designed to restore and maintain the quality of those impaired water bodies through the establishment of pollutant specific allowable loads. The pollutant of concern for this TMDL is sediment from landuse runoff and in-channel sediment processes.

The listed segments of Thompson Creek and West Little Thompson Creek are within United States Geological Survey (USGS) Hydrologic Unit Code (HUC) 03170005. The Thompson Creek watershed is located in Jones, Wayne, and Perry Counties (Figure 1). The West Little Thompson Creek watershed lies within Jones and Wayne Counties. The Thompson Creek watershed is 121,738 acres. The West Little Thompson Creek watershed is 7,903 acres. Both drainage areas contain many landuse types including agricultural land, pastureland, and wetland areas. However, the dominant landuse within both drainage areas is forest. The locations of the §303(d) listed segments are shown in Figure 2.

Figure 1. Location of the Thompson Creek and West Little Thompson Creek Watersheds

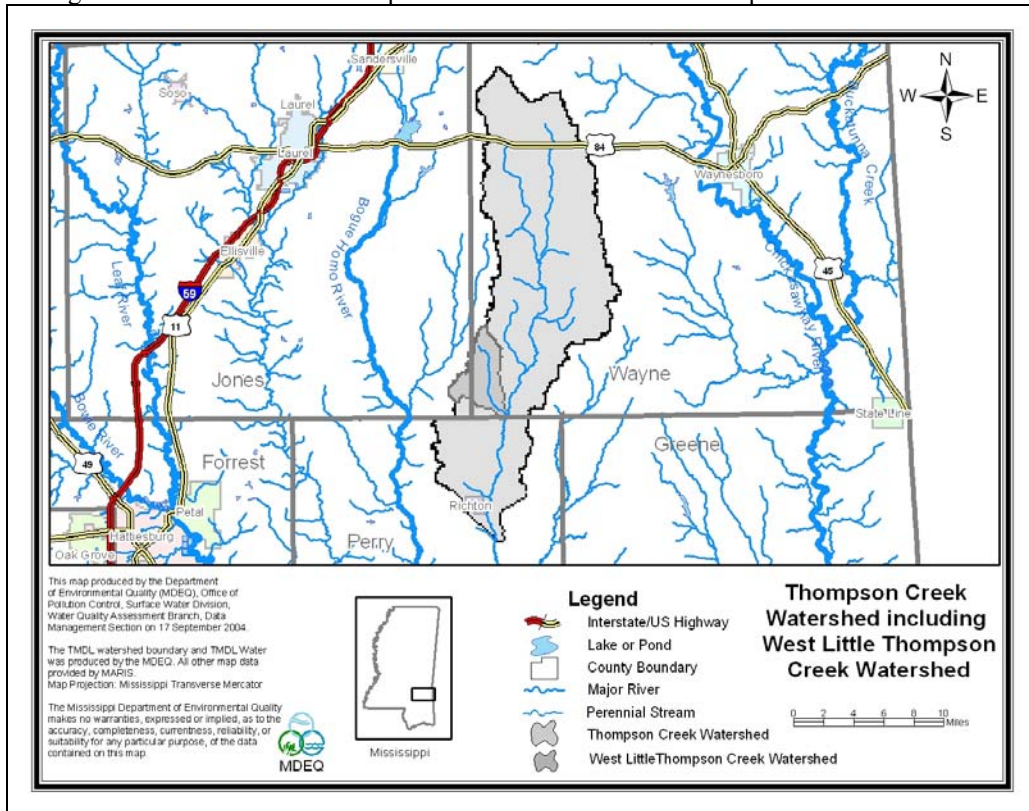
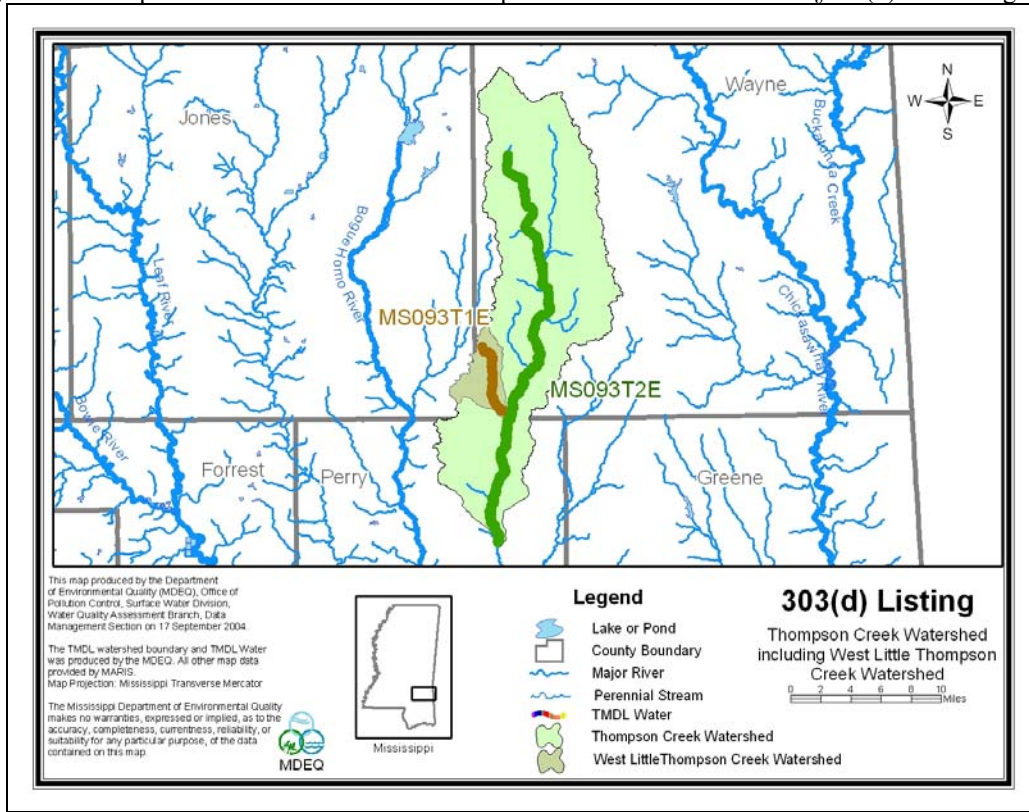


Figure 2. Thompson Creek and West Little Thompson Creek Watersheds with §303(d) Listed Segments



1.2 Stressor Identification

The impaired segments of Thompson Creek and West Little Thompson Creek were listed due to failure to meet minimum water quality criteria for biological use support based on biological sampling conducted in 2001 (MDEQ, 2003a). The bioregion reference condition for the Pascagoula River Basin was 61.35. Both Thompson Creek and West Little Thompson Creek scored below this reference condition receiving M-BISQ scores of 48.20 and 42.55, respectively. Because of the 2001 sampling results, detailed assessments of the watersheds and potential pollutant sources, called stressor identification studies, were completed. The purpose of stressor identification studies is to identify the most probable stressors and sources that are likely causing degradation of instream biological conditions. The results of the stressor identification studies indicated that sediment was the most likely stressor in both the Thompson Creek and West Little Thompson Creek watersheds (MDEQ, 2004a; MDEQ, 2004b).

1.3 Applicable Water Body Segment Use

The water use classification for Thompson Creek and West Little Thompson Creek, as established by the State of Mississippi in the *Water Quality Criteria for Intrastate, Interstate, and Coastal Waters* regulation, is Fish and Wildlife Support (MDEQ, 2002b). Waters with this classification are intended for fishing and propagation of fish, aquatic life, and wildlife. Waters that meet the Fish and Wildlife Support criteria should also be suitable for secondary contact, which is defined as incidental contact with water including wading and occasional swimming.

1.4 Applicable Water Body Segment Standard

The *State of Mississippi Water Quality Criteria for Intrastate, Interstate, and Coastal Waters* do not include a water quality standard applicable to aquatic life protection due to sediment (MDEQ, 2002b). However, a narrative standard for the protection of aquatic life was interpreted to determine applicable targets for this TMDL. The narrative standard is that waters shall be free from materials attributable to municipal, industrial, agricultural, or other dischargers producing color, odor, taste, total suspended solids, or other conditions in such degree as to create a nuisance, render the waters injurious to public health, recreation, or to aquatic life and wildlife, or adversely affect the palatability of fish, aesthetic quality, or impair the waters for any designated uses.

2.0 TMDL ENDPOINT AND WATER QUALITY ASSESSMENT

2.1 Selection of a TMDL Endpoint and Critical Condition

One of the major components of a TMDL is the establishment of target endpoints, which are used to evaluate the attainment of acceptable water quality. Target endpoints, therefore, represent the water quality goals that are to be achieved by meeting the load and wasteload allocations specified in the TMDL. The endpoints allow for a comparison between observed conditions and conditions that are expected to restore designated uses.

This sediment TMDL is expressed as acceptable ranges of sediment loadings at the effective discharge. The ranges were developed from data measured at stable streams in the same ecoregion(s). The target range for Thompson Creek is a sediment yield in the range from 5.88E-03 to 1.05E-02 tons of sediment per acre per day at the effective discharge. The target range for West Little Thompson Creek is a sediment yield in the range from 5.73E-03 to 1.44E-02 tons of sediment per acre per day at the effective discharge. The discharge which moves the most sediment, or is the channel-forming flow, is known as the effective discharge. This discharge has been selected as the critical condition for this TMDL (Simon, et al., 2002b). If the sediment targets applicable for sediment in Thompson Creek and West Little Thompson Creek are maintained during critical conditions, then the health of the streams should improve.

3.0 SOURCE ASSESSMENT and LOAD ESTIMATION

An important part of the TMDL analysis is the identification of individual sources, source categories, or source subcategories of sedimentation in the watershed and the amount of pollutant loading contributed by each of these sources. Under the CWA, sources are broadly classified as either point or nonpoint sources. Under 40 CFR §122.2, a point source is defined as a discernable, confined, and discrete conveyance from which pollutants are or may be discharged to surface waters. The National Pollutant Discharge Elimination System (NPDES) program regulates point source discharges. Point sources can be described by two broad categories: 1) NPDES regulated municipal and industrial wastewater treatment plants (WWTPs) and 2) NPDES regulated industrial activities (which include construction activities) and municipal storm water discharges (Municipal Separate Storm Sewer Systems [MS4s]). For the purposes of this TMDL, all sources of sediment loading not regulated by NPDES permits are considered nonpoint sources. More detailed source assessments for the Thompson Creek and West Little Thompson Creek watersheds are given in the *Stressor Identification for Thompson Creek* (MDEQ, 2004a) and the *Stressor Identification for West Little Thompson Creek* (MDEQ, 2004b).

3.1 Assessment of Point Sources

There are no NPDES permitted facilities in the West Little Thompson Creek watershed. There is one facility in the Thompson Creek watershed with an NPDES permit that is permitted for Total Suspended Solids (TSS). The facility is not included because no changes are required in the permit due to this TMDL. This is considered appropriate since this source provides a negligible loading of suspended solids to the receiving waters compared to wet weather sources (e.g., NPDES regulated construction activities, MS4s, and nonpoint sources). Also, the TSS component of a NPDES permitted facility is different from the pollutant addressed within this TMDL. The TSS component of the permitted discharges is generally composed more of organic material, and therefore, provides less direct impact on the biologic integrity of a stream (through settling and accumulation) than would stream sedimentation due to soil erosion during wet weather events. The pollutant of concern for this TMDL is sediment from landuse runoff and in-channel processes.

Sediment loadings from NPDES regulated construction activities and MS4s are considered point sources of sediment to surface waters. These discharges occur in response to storm events and are included in the WLA portion of this TMDL. As of March 2003, discharge of storm water from construction activities disturbing between one and five acres must also be controlled by an NPDES permit. The purpose of the NPDES permit is to eliminate or minimize the discharge of pollutants (sediment) from construction activities. Since construction activities at a site are of a temporary, relatively short term nature, the number of construction sites covered by the general permit varies. The target for these areas is the same range as the TMDL target of 5.88E-03 to 1.05E-02 tons per acre per day at the effective discharge for Thompson Creek and 5.73E-03 to 1.44E-02 tons per acre per day at the effective discharge for West Little Thompson Creek. The WLAs provided to the NPDES regulated construction activities and MS4s will be implemented as BMPs as specified in Mississippi's General Stormwater Permits for Small Construction, Construction, and Phase I & II MS4 permits. Properly designed and well-maintained BMPs are expected to provide attainment of water quality standards.

3.2 Assessment of Nonpoint Sources

Nonpoint loading of sediment in a water body results from the transport of the material into receiving waters by the processes of mass wasting, head cutting, gullying, and sheet and rill erosion. Sources of sediment include:

- Agriculture
- Silviculture
- Rangeland
- Construction sites
- Roads
- Urban areas
- Mass wasting areas
- Gullies
- Surface mining
- In-channel and instream sources
- Historical landuse activities and channel alterations

The Thompson Creek watershed 121,738 acres. The West Little Thompson Creek watershed is 7,903 acres. Both drainage areas contain many different landuse types, including forest, cropland, pasture, barren, and wetlands as shown in Tables 1 and 2 and Figures 3 and 4. However, the dominant landuse within both watersheds is forest. The landuse information for the watershed is based on the State of Mississippi’s Automated Resource Information System (MARIS), 1997. This data set is based on Landsat Thematic Mapper digital images taken between 1992 and 1993. The MARIS data are classified on a modified Anderson level one and two system with additional level two wetland classifications.

Table 1. Thompson Creek Watershed Landuse Distribution

	Urban	Forest	Cropland	Pasture/Grass	Scrub/Barren	Water	Wetland	Total
Acres	256	83,809	1,731	19,510	15,233	286	913	121,738
%	0.2%	68.9%	1.4%	16.0%	12.5%	0.2%	0.8%	100.0%

Table 2. West Little Thompson Creek Watershed Landuse Distribution

	Urban	Forest	Cropland	Pasture/Grass	Scrub/Barren	Water	Wetland	Total
Acres	0	6,794	15	307	730	12	45	7,903
%	0.0%	86.0%	0.2%	3.9%	9.2%	0.2%	0.5%	100.0%

Figure 3. Thompson Creek Watershed Landuse Distribution

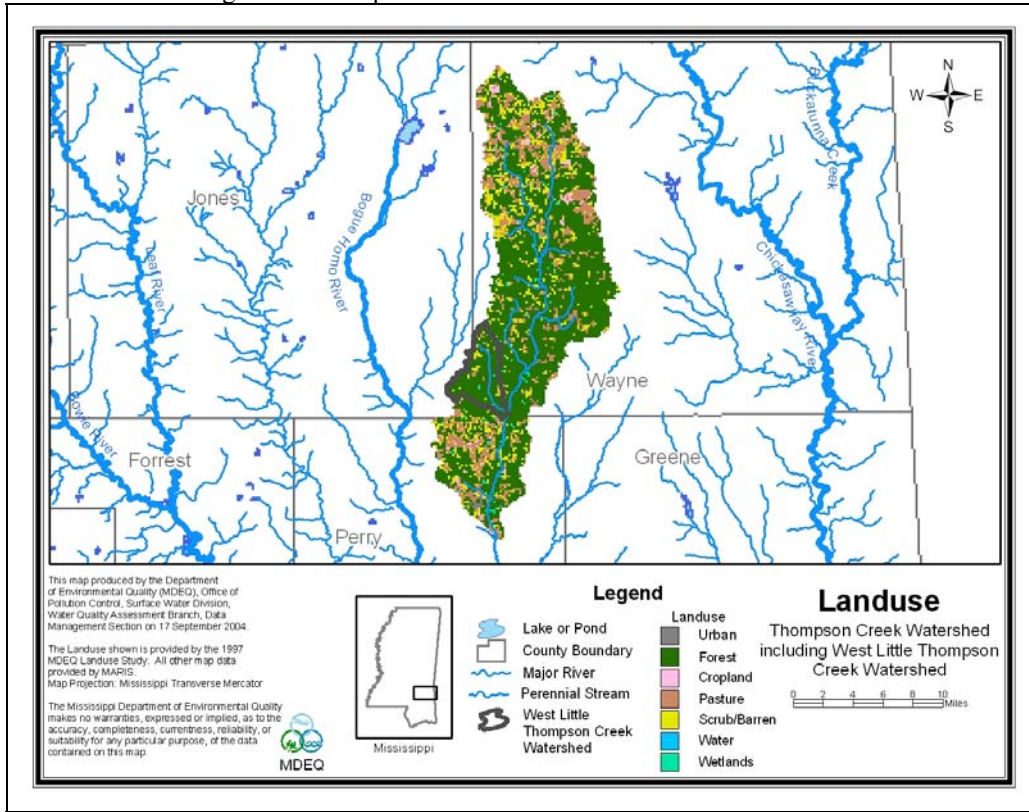
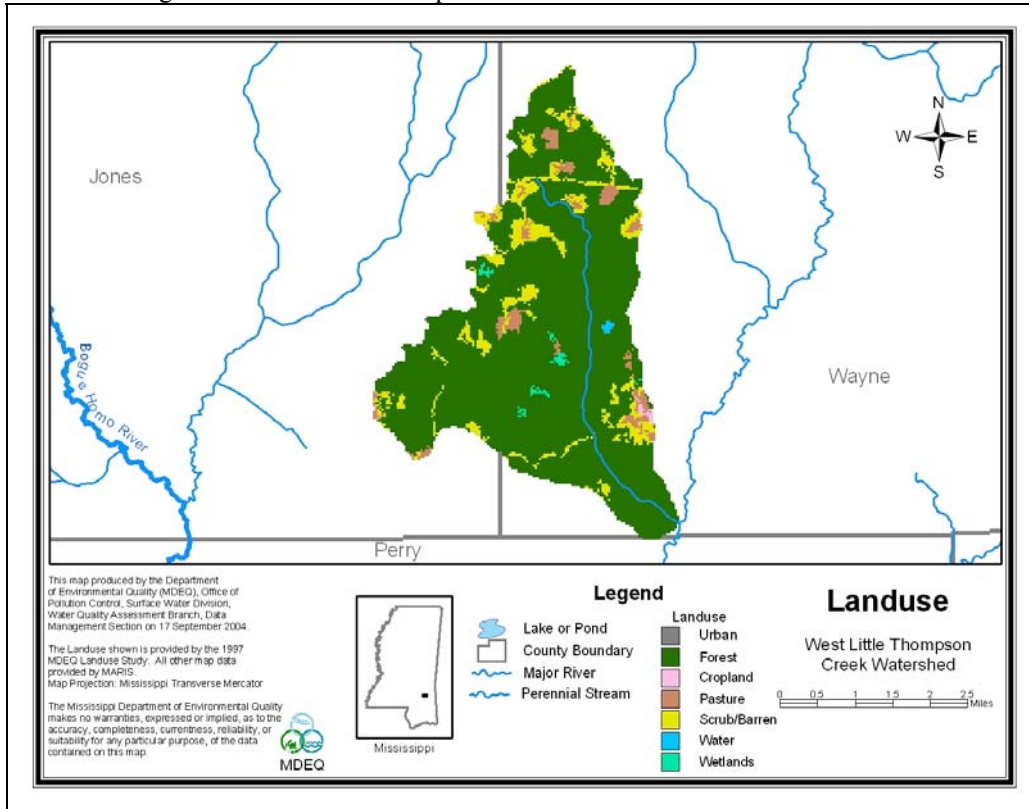


Figure 4. West Little Thompson Creek Watershed Landuse Distribution



3.3 Load Estimation

Due to lack of data for calibration it was determined that a modeling exercise to quantify the load from each source and estimate the total existing load would be inappropriate. However, a range of unstable values was determined for each level IV ecoregion based on unstable watersheds where sufficient data were available (Table 3). If a watershed contained multiple level IV ecoregions, the sediment yield ranges were determined based on a weighted average of the level IV ecoregions present in the watershed. The Thompson Creek watershed is located within Level IV Ecoregions 65d (70%) and 65f (30%). The West Little Thompson Creek watershed is located within Level IV Ecoregions 65d (38%) and 65f (62%). Similar sources are present in the unstable watersheds as are present in the Thompson Creek and West Little Thompson Creek watersheds. Therefore, the existing loads for Thompson Creek and West Little Thompson Creek are believed to be within these ranges. The unstable range for Thompson Creek is 1.15E-02 to 2.17E-02 tons per acre per day at the effective discharge. The unstable range for the West Little Thompson Creek is 9.43E-03 to 2.37E-02 tons per acre per day at the effective discharge.

Table 3. Unstable Stream Sediment Yield Ranges for Level IV Ecoregions within the Pascagoula River Basin

Level IV Ecoregion	Unstable Streams Sediment Yield Range*
Ecoregion 65d	1.35E-02 to 1.98E-02
Ecoregion 65f	6.94E-03 to 2.61E-02
Ecoregion 65p	9.35E-04 to 7.61E-03
Ecoregion 65r	1.51E-03 to 7.61E-02

*tons per acre per day at the effective discharge

4.0 DETERMINING THE TARGET SEDIMENT LOAD

The information and methodologies described in the following sections are based on research efforts conducted by the CWPRU of the National Sedimentation Laboratory in Oxford, Mississippi. The primary sources of the information presented in this section are:

- *Actual and Reference Sediment Yields for the James Creek Watershed – Mississippi* (Simon, et al., 2002a)
- *“Reference” and Impacted” Rates of Suspended-Sediment Transport for Use in Developing Clean Sediment TMDLs: Mississippi and the Southeastern United States* (Simon, et al., 2002b)

4.1 Selecting a Reference Condition (Simon, et al., 2002a)

Sediment loads (transport rates) in streams vary by orders of magnitude over time and by location. Controls such as geology and channel-boundary materials, land use, channel stability, and the type and timing of precipitation events make prediction of sediment loads difficult and complex. Still, in order to determine the amount of sediment that impairs a given waterbody (TMDL), one must first be able to determine the sediment load that would be expected in an unimpaired stream of a given type and location. However, baseline conditions of flow, sediment concentrations, and transport rates for streams in the wide variety of physiographic provinces and under a wide variety of land uses are poorly understood.

There is no reason to assume that “natural” or background rates of sediment transport will be consistent from one region to another. Within the context of clean sediment TMDLs, it follows that there is no reason to assume that “target” values should be consistent on a nationwide basis. Similarly, there is no reason to assume that channels within a given region will have consistent rates of sediment transport. For example, unstable channel systems or those draining disturbed watersheds will produce and transport more sediment than stable channel systems in the same region. This reflects differences in the magnitude and perhaps type of erosion processes that dominate a subwatershed or stream reach.

To be useful for TMDL practitioners sediment transport relations must be placed within a conceptual and analytic framework such that they can be used to address sediment-related problems at sites where no such data exist. To accomplish this, sediment transport characteristics and relations need to be regionalized according to attributes of channels and drainage basins that are directly related to sediment production, transport, and potential impairment. In a general way, these attributes include among others, physiography, geology, climate and ecology, differentiated collectively as an ecoregion.

In order to identify those sediment transport conditions that represent impacted or impaired conditions, it is essential to first be able to define a non-disturbed, stable, or “reference” condition for the particular stream reach. In some schemes the

“reference” condition simply means “representative” of a given category of classified channel forms or morphologies and as such, may not be analogous with a “stable”, “undisturbed”, or “background” rate of sediment production and transport.

The Rosgen (1985) stream classification system is widely used to describe channel form. In this classification system, stream types D, F, and G are by definition, unstable (Rosgen, 1996). These stream reaches, therefore, would be expected to produce and transport enhanced amounts of sediment and represent “impacted”, if not “impaired” conditions. Thus, although it may be possible to define a “representative” reach of stream types D, F, and G, for the purpose of TMDL development, a “reference” condition transporting “natural” or “background” rates of sediment will be difficult to find.

As an alternative scheme for TMDL practitioners, the channel evolution framework set out by Simon and Hupp (1986) is proposed (Figure 5). In most alluvial channels, disruption of the dynamic equilibrium generally results in a certain degree of upstream channel degradation and downstream aggradation. If the predisturbed channel is considered as the initial stage (stage I) of channel evolution and the disrupted channel as an instantaneous condition (stage II), rapid channel degradation can be considered stage III. Degradation flattens channel gradients and consequently reduces the available stream power for given discharges with time. Concurrently, bank heights are increased and bank angles are often steepened by fluvial undercutting and by pore-pressure induced bank failures near the base of the bank. Thus, the degradation stage (stage III) is directly related to destabilization of the channel banks and to channel widening by mass-wasting processes (stage IV) once bank heights and angles exceed the critical conditions of the bank material (as determined by shear-strength characteristics).

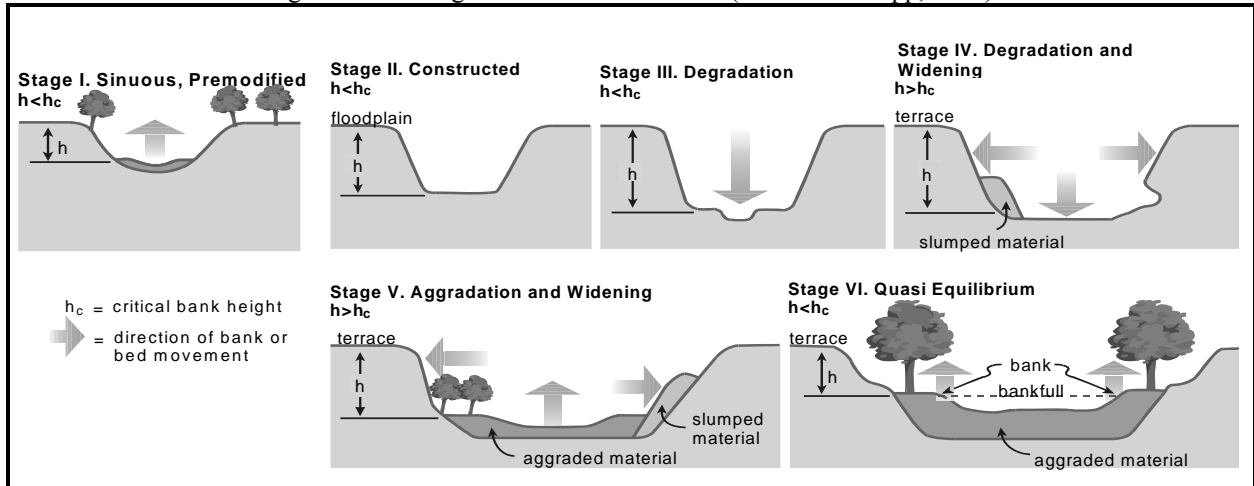
As degradation migrates further upstream, aggradation (stage V) becomes the dominant trend in previously degraded downstream sites because the flatter gradient and lower hydraulic radius at the degraded site cannot transport the heightened sediment loads originating from degrading reaches upstream. This secondary aggradation occurs at rates roughly 60% less than the associated degradation rate (Simon and Hupp, 1992). These reduced aggradation rates indicate that bed-level recovery will not be complete and that attainment of a new dynamic equilibrium will take place through (1) further channel widening, (2) the establishment of riparian vegetation that adds roughness elements and reduces the stream power for given discharges, and (3) further gradient reduction by meander extension and elongation.

The lack of complete bed-level recovery often results in a two-tiered channel configuration with the original floodplain surface becoming a terrace. Flood flows are, therefore, constrained within this enlarged channel below the terrace level. Without proliferation of riparian vegetation within the channel, this results in a given flow having greater erosive power than if an equivalent flow could dissipate energy by spreading across the floodplain. Where vegetation does re-establish, the additional roughness limits the erosive power of flood events within the incised channel and

constrains shear-stress values to near bankfull levels. Aggrading conditions (stage V) are also common in reaches downstream from the area of maximum disturbance immediately after the disturbance is imposed on the stream channel.

With stages of channel evolution tied to discrete channel processes and not strictly to specific channel shapes, they have been successfully used to describe systematic channel-stability processes over time and space in diverse environments subject to various disturbances such as stream response to: channelization in the Southeast US Coastal Plain; volcanic eruptions in the Cascade Mountains; and dams in Tuscany, Italy (Rinaldi and Simon, 1998). Because the stages of channel evolution represent shifts in dominant channel processes, they are systematically related to suspended-sediment and bed-material discharge (Simon, 1989; Kuhnle and Simon, 2000), fish-community structure, rates of channel widening (Simon and Hupp, 1992), and the density and distribution of woody riparian vegetation (Hupp, 1992).

Figure 5. Six Stages of Channel Evolution (Simon and Hupp, 1986)



An advantage of a process-based channel-evolution scheme for use in TMDL development is that Stages I and VI represent two true “reference” conditions. In some cases, channels are unlikely to recover to Stage I, pre-modified conditions. Stage VI, re-stabilized conditions are a more likely target under the present regional landuse and altered hydrologic regimes and can be used as a “reference” condition. However, in pristine areas where disturbances have not occurred or where they are far less severe, Stage I conditions can be used as a “reference” condition.

4.2 Analysis of Available Suspended-Sediment Data (Simon, et al., 2002a)

Analysis of suspended-sediment transport data involves establishing a relation between flow and sediment concentration or load. Instantaneous concentration data combined with either an instantaneous flow value or flow data representing the value obtained from the stage-discharge relation at 15-minute intervals are best. Mean daily values of both flow and sediment loads, which are readily available from the USGS, tend to be biased towards lower flows, particularly in flashy basins. For

establishing sediment transport rating relations, instantaneous concentration and 15-minute flow data were used from USGS and ARS gauging station records.

Because the “effective discharge” is that discharge or range of discharges that shape channels and perform the most geomorphic work (transport the most sediment) over the long term, it can serve as a useful indicator of regional suspended-sediment transport conditions for “reference” and impacted sites. The effective discharge is obtained by combining flow frequency data with sediment transport relationships. In many parts of the United States, the effective discharge is approximately equal to the peak flow that occurs about every 1.5 years ($Q_{1.5}$) and may be analogous to the bankfull discharge in stable streams.

The recurrence interval for the effective discharge was calculated for 10 streams in Mississippi. Calculating the effective discharge is a matter of integrating a flow-frequency curve with a sediment transport rating to obtain the discharge (range of discharges) that transports the most sediment. This was accomplished at 10 sites where the complete 15-minute flow record was easily obtainable. For the 10 streams analyzed in Mississippi, the $Q_{1.5}$ is on average, a good approximation. Therefore, the $Q_{1.5}$ was used as a measure of establishing the effective discharge at all sites.

The effective discharge ($Q_{1.5}$) was determined for all sites where the instantaneous sediment concentration data were available. This discharge was then applied to the sediment transport relation to obtain the sediment load at the effective discharge. To normalize the data for differences in basin size, the sediment load was divided by drainage area to obtain sediment yield (in tons/acre/day).

4.3 Target Sediment Yields

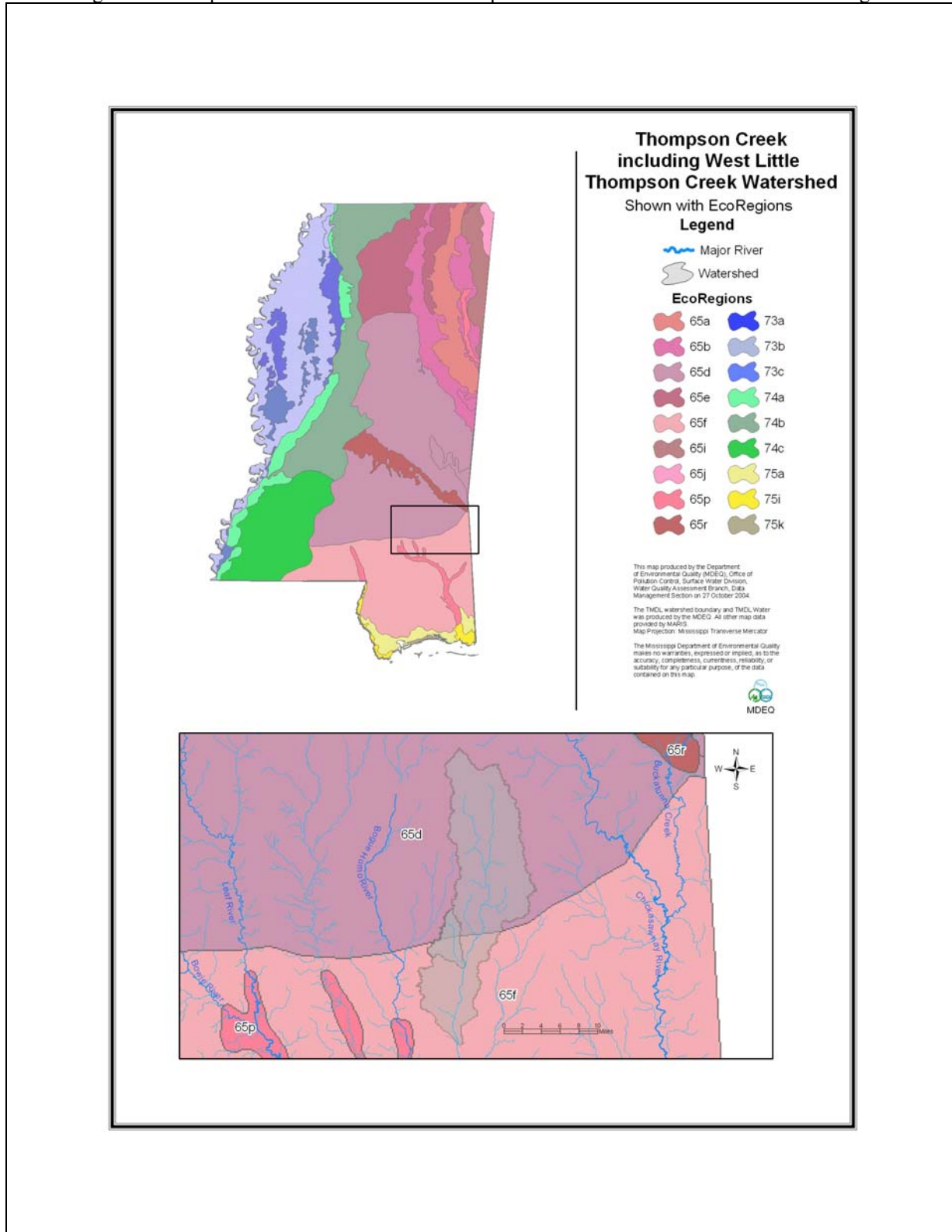
Target values for suspended-sediment are based on the concept that stable channel conditions can be represented by channel evolution Stages I and VI. Therefore, the effective discharge sediment yields for Stage I and VI in a given ecoregion represent background or natural transport rates (Simon, et al., 2002b). The targeted sediment yield for an ecoregion is based on the sediment yield values obtained for Stage I and VI sites within that ecoregion (Table 4). If a watershed contains multiple level IV ecoregions, the sediment target is determined based on a weighted average of the level IV ecoregions present in the watershed. The Thompson Creek watershed is located within Level IV Ecoregions 65d (70%) and 65f (30%). The West Little Thompson Creek watershed is located within Level IV Ecoregions 65d (38%) and 65f (62%) as shown in Figure 6. Based on this information, the targeted sediment yield ranges are 5.88E-03 to 1.05E-02 tons per acre per day at the effective discharge for Thompson Creek and 5.73E-03 to 1.44E-02 tons per acre per day at the effective discharge for West Little Thompson Creek.

Table 4. Stable Stream Sediment Yield Ranges for Level IV Ecoregions within the Pascagoula River Basin

Level IV Ecoregion	Stable Streams Sediment Yield Range*
Ecoregion 65d	6.01E-03 to 6.81E-03
Ecoregion 65f	5.56E-03 to 1.90E-02
Ecoregion 65p	8.90E-04 to 1.78E-03
Ecoregion 65r	7.57E-04 to 4.59E-03

*tons per acre per day at the effective discharge

Figure 6. Thompson Creek and West Little Thompson Creek Watersheds with Level IV Ecoregions



5.0 ALLOCATION

The allocation for this TMDL involves a wasteload allocation (WLA) for permitted sources, a load allocation (LA) for unpermitted nonpoint sources, and an implicit margin of safety (MOS), which should result in attainment of water quality standards in the Thompson Creek and West Little Thompson Creek watersheds. According to 40 CFR §130.2 (i), TMDLs can be expressed in terms of mass per time, toxicity, or other appropriate measure. This TMDL is expressed as the tons of sediment that can be discharged from an acre of a subwatershed during a day (tons/acre/day) at the effective discharge and still attain the applicable water quality standard. It is appropriate to apply the same target yield to permitted (WLA) and unpermitted (LA) watershed areas. For load TMDLs the WLA and LA are summed to calculate the TMDL. Because this TMDL is expressed as a yield, as long as all activities, permitted or unpermitted, meet the same yield, the TMDL yield will be met, regardless of the relative load contribution. The methods used to develop these values are described in detail in the reports titled, “*Reference*” and “*Impacted*” *Rates of Suspended-Sediment Transport for Use in Developing Clean Sediment TMDLs: Mississippi and the Southeastern United States* (Simon, et al., 2002b) and *Actual and Reference Sediment Yields for the James Creek Watershed – Mississippi* (Simon, et al., 2002a).

5.1 Wasteload Allocations

The contribution from NPDES permitted facilities was considered negligible in the development of this TMDL. The TSS component of any NPDES permitted facility is different from the pollutant addressed within this TMDL. The pollutant of concern for this TMDL is sediment from landuse runoff and in-channel processes.

Sediment loadings from NPDES regulated construction activities and MS4s are considered point sources of sediment to surface waters. These discharges occur in response to storm events and are included in the WLA of this TMDL as the same target yield as the TMDL of 5.88E-03 to 1.05E-02 tons per acre per day at the effective discharge for Thompson Creek and 5.73E-03 to 1.44E-02 tons per acre per day at the effective discharge for West Little Thompson Creek.

5.2 Load Allocations

The LA developed for this TMDL is an estimation of the acceptable contribution of all nonpoint sources in the watershed. Channel processes and upland sources both contribute to the sediment loading of the water body. Potential nonpoint sources of sediment include agricultural activities, silviculture activities, surface mining activities, gullies, in-channel and instream sources, roads, and construction activities not regulated by NPDES permits.

Mississippi has a voluntary (non-regulated) BMP program for forestry. The program began in 1988 when MDEQ requested that the Mississippi Forestry Commission (MFC) coordinate the development of voluntary BMPs for forestry in Mississippi. The BMP guidelines were approved by MDEQ and EPA Region 4. These guidelines have been published in the handbook, *Mississippi's BMPs: Best Management Practices for Forestry in Mississippi* (MFC, 2000). Forested areas that are subject to silviculture activities may exhibit elevated sediment contributions if voluntary BMPs for forestry in Mississippi are not implemented.

MFC recently conducted the 2003 BMP Implementation Survey in November 2002 through July 2003. A total of 258 sites having recent silviculture activity were randomly selected to evaluate the voluntary implementation of BMPs. These sites were also evaluated for the presence of a significant risk to water quality. The results of the survey indicated that 89% of the BMPs applicable to the survey sites were implemented in accordance with the BMP handbook (MFC, 2004).

BMPs, as outlined in “Mississippi’s BMPs: Best Management Practices for Forestry in Mississippi” (MFC, 2000), “Planning and Design Manual for the Control of Erosion, Sediment, and Stormwater” (MDEQ, et. al, 1994), and “Field Office Technical Guide” (NRCS, 2000), would be the most effective means of reducing the load from a majority of potential upland sources.

For the Thompson Creek and West Little Thompson Creek watersheds to attain the applicable narrative water quality standard for sediment, the allowable range of sediment loads is 5.88E-03 to 1.05E-02 tons per acre per day at the effective discharge for Thompson Creek and 5.73E-03 to 1.44E-02 tons per acre per day at the effective discharge for West Little Thompson Creek.

5.3 Incorporation of a Margin of Safety (MOS)

The two types of MOS development are to implicitly incorporate the MOS using conservative assumptions or to explicitly specify a portion of the total TMDL as the MOS. The MOS selected for this TMDL is implicit. The use of conservative procedures provides a sufficient implicit MOS. These conservative procedures include the use of a stable stream as the target and the use of the effective discharge flow, the flow that produces the most sediment transport.

5.4 Calculation of the TMDL

As stated above, the pollutant of concern for this TMDL is sediment from landuse runoff and in-channel processes. The LA includes the contributions from the channel and surface runoff from the watershed. The MOS for this TMDL is implicit and derived from the conservative assumptions incorporated into this methodology. This TMDL, expressed as acceptable ranges of sediment yields, is the same for the WLA, LA, and TMDL. For load TMDLs the WLA and LA are summed to calculate the TMDL. Because this TMDL is expressed as a yield, as long as all activities, permitted or unpermitted, meet the same yield as shown in Table 5, the TMDL yield will be met, regardless of the relative load contribution.

Table 5. TMDL Yields

Thompson Creek – MS093T2E				
Parameter	WLA	LA	MOS	TMDL
Sediment	5.88E-03 to 1.05E-02*	5.88E-03 to 1.05E-02*	Implicit	5.88E-03 to 1.05E-02*
West Little Thompson Creek – MS093T1E				
Parameter	WLA	LA	MOS	TMDL
Sediment	5.73E-03 to 1.44E-02*	5.73E-03 to 1.44E-02*	Implicit	5.73E-03 to 1.44E-02*

*tons per acre per day at the effective discharge

5.5 Seasonality

The use of data collected throughout the year at multiple stations in each ecoregion to set the target addresses seasonal variation. Instantaneous flow and suspended-sediment data were used to develop the TMDL targets for each ecoregion. These data were collected throughout the year and would account for all seasons of the calendar year, changing atmospheric conditions (including rainy and dry seasons and high and low temperatures), and the periods representative of critical conditions.

5.6 Reasonable Assurance

This component of TMDL development does not apply to this TMDL Report. There are no point sources (WLA) requesting a reduction based on promised LA components and reductions.

6.0 CONCLUSION

The acceptable ranges of sediment yields were estimated to be 5.88E-03 to 1.05E-02 tons per acre per day at the effective discharge for Thompson Creek and 5.73E-03 to 1.44E-02 tons per acre per day at the effective discharge for West Little Thompson Creek. The estimated existing ranges are 1.15E-02 to 2.17E-02 tons per acre per day at the effective discharge for Thompson Creek and 9.43E-03 to 2.37E-02 tons per acre per day at the effective discharge for West Little Thompson Creek. The estimated existing ranges are larger than the TMDL ranges. Therefore, it is recommended that the Thompson Creek and West Little Thompson Creek watersheds be considered a priority for streambank and riparian buffer zone restoration and any sediment reduction BMPs, especially for the road crossings, agricultural activities, and construction activities. The implementation of these BMP activities should reduce the sediment load entering Thompson Creek and West Little Thompson Creek. The reduction of the sediment load in the Thompson Creek and West Little Thompson Creek watersheds to equal that of a relatively stable stream will allow the streams to approach stable conditions. This will provide improved habitat for the support of aquatic life in the water bodies and will result in the attainment of the applicable water quality standards.

6.1 Future Activities

MDEQ has adopted the Basin Approach to Water Quality Management, a plan that divides Mississippi's major drainage basins into five groups. During each yearlong cycle, MDEQ resources for water quality monitoring will be focused on one of the basin groups. During the next monitoring phase in the Pascagoula River Basin, the Thompson Creek and West Little Thompson Creek watersheds may receive additional monitoring to identify any changes or improvements in water quality. For land disturbing activities related to silviculture, construction, and agriculture, it is recommended that practices, as outlined in "Mississippi's BMPs: Best Management Practices for Forestry in Mississippi" (MFC, 2000), "Planning and Design Manual for the Control of Erosion, Sediment, and Stormwater" (MDEQ, et. al, 1994), and "Field Office Technical Guide" (NRCS, 2000), be followed, respectively.

6.2 Public Participation

This TMDL will be published for a 30-day public notice. During this time, the public will be notified by publication in both a statewide and local newspaper. The public will be given an opportunity to review the TMDL and submit comments. MDEQ also distributes all TMDLs at the beginning of the public notice to those members of the public who have requested to be included on a TMDL mailing list. TMDL mailing list members may request to receive the TMDL reports through either, email or the postal service. Anyone wishing to become a member of the TMDL mailing list should contact Greg Jackson at (601) 961-5098 or Greg_Jackson@deq.state.ms.us.

At the end of the 30-day period, MDEQ will determine the level of interest in the TMDL and make a decision on the necessity of holding a public meeting. All comments received during the public notice period and at any public meeting become a part of the record of this TMDL. All comments will be considered in the ultimate completion of this TMDL for submission of this TMDL to EPA Region 4 for final approval.

DEFINITIONS

Aggradation: The raising of the bed of a watercourse by the deposition of sediment.

Allocations: That portion of a receiving water's loading capacity that is attributed to one of its existing or future pollution sources (nonpoint or point) or to natural background sources.

Ambient Stations: A network of fixed monitoring stations established for systematic water quality sampling at regular intervals, and for uniform parametric coverage over a long-term period.

Anthropogenic: Pertains to the [environmental] influence of human activities.

Assimilative Capacity: The amount of contaminant load that can be discharged to a specific stream or river without violating the provisions of the *State of Mississippi Water Quality Criteria for Intrastate, Interstate, and Coastal Waters and Water Quality* regulations. Assimilative capacity is the extent to which a body of water can receive wastes without significant deterioration of beneficial uses.

Background: Ambient pollutant concentrations due to natural sources, nearby sources other than the one currently under consideration, and unidentified anthropogenic sources.

Background Levels: Levels representing the chemical, physical, and biological conditions that would result from natural geomorphological processes such as weathering or dissolution.

Bank Full Stage: Stage of flow at which a stream fills its channel up to level of its bank. Recurrence interval averages 1.5 to 2 years.

Bedload Sediment: Portion of sediment load transported downstream by sliding, rolling, bouncing along the channel bottom. Generally consists of particles >1 mm.

Best Management Practices (BMPs): (1) The methods, measures, or practices selected by an agency to meet its nonpoint source control needs. BMPs include but are not limited to structural and nonstructural controls and operation and maintenance procedures. BMPs can be applied before, during, or after pollution-producing activities to reduce or eliminate the introduction of pollutants into receiving waters. (2) Methods have been determined to be the most effective, practical means of preventing or reducing pollution from nonpoint sources.

Calibration: Testing and tuning of a model to a set of field data. Also includes minimization of deviations between measured field conditions and output of a model by selecting appropriate model coefficients.

Channel: (1) A natural stream that conveys water; a ditch or channel excavated for the flow of water. (2) The water-filled groove through which runoff water flows. In a narrow valley the channel may include the entire valley floor, but ordinarily it occupies only a small fraction of the valley.

Channel Improvement: The improvement of the flow characteristics of a channel by clearing, excavation, realignment, lining, or other means in order to increase its capacity. Sometimes used to connote channel stabilization.

Channel Stabilization: Erosion prevention and stabilization of velocity distribution in a channel using jetties, drops, revetments, vegetation, and other measures.

Channelization: Straightening and deepening streams so that water will move faster, a marsh-drainage tactic that can interfere with waste assimilation capacity, disturb fish and wildlife habitats, and aggravate flooding.

Clean Sediment: Sediment that is not contaminated by chemical substances. Pollution caused by clean sediment refers to the quantity of sediment, as opposed to the presence of pollutant-contaminated sediment.

Critical Condition: The critical condition can be thought of as the “worst case” scenario of environmental conditions in the water body in which the loading expressed in the TMDL for the pollutant of concern will continue to meet water quality standards. Critical conditions are the combination of environmental factors (e.g., flow, temperature, etc.) that results in attaining and maintaining the water quality criterion and has an acceptably low frequency of occurrence.

Cross-Sectional Area: Wet area of a waterbody normal to the longitudinal component of the flow.

Daily Discharge: The discharge of a pollutant measured during a 24-hour period that reasonably represents the day for purposes of sampling. For pollutants with limitations expressed in units of mass, the daily discharge is calculated as the total mass of the pollutant discharged over the day. For pollutants with limitations expressed in other units of measurement, the daily discharge is calculated as the average measurement of the pollutant over the day.

Designated Use: (1) Those uses specified in water quality standards for each water body or segment whether or not they are being attained. (2) Those water uses identified in state water quality standards which must be achieved and maintained as required under the Clean Water Act.

Discharge Monitoring Report: Report of effluent characteristics submitted by a NPDES permitted facility.

Dissolved Solids: (1) The total amount of dissolved materials, organic and inorganic, contained in water or wastes. Excessive dissolved solids can make water unsuitable for industrial uses, unpalatable for drinking, and even cathartic. Potable water supplies must have dissolved solid content from 20 to 1000 mg/l, but sources which have more than 500 mg/l are not recommended by the U.S. Public Health Service. (2) Disintegrated organic and inorganic material in water. Excessive amounts make water unfit to drink or use in industrial processes.

Diurnal: Recurring daily. Diurnal indicates variations following a distinctive pattern and recurring from day to day.

Dynamic Model: A mathematical formulation describing and simulating the physical behavior of a system or a process and its temporal variability.

Ecoregion: A physical region that is defined by its ecology, which includes meteorological factors, elevation, plant and animal speciation, landscape position, and soils.

Effective Discharge: The channel forming discharge or discharge which moves the most sediment. This value is obtained by combining flow frequency data with sediment transport data.

Effluent: (1) Any solid, liquid, or gas which enters the environment as a by-product of a man-oriented process. The substances that flow out of a designated source. Effluent, effluence, and efflux have the same meaning. (2) Wastewater – treated or untreated – that flows out of a treatment plant, sewer, or industrial outfall. Generally refers to wastes discharged into surface waters.

Effluent Standards and Limitations: All State or Federal effluent standards and limitations on quantities, rates, and concentrations of chemical, physical, biological, and other constituents to which a waste or wastewater discharge may be subject under the Federal Act or the State law. This includes, but is not limited to, effluent limitations, standards of performance, toxic effluent standards and prohibitions, pretreatment standards, and schedules of compliance.

Flood Plain: (1) The lowland and relatively flat areas adjoining inland and coastal waters and other floodprone areas such as offshore islands, including at a minimum, the area subject to a one percent or greater chance of flooding in any given year. The base floodplain shall be used to designate the 100-year floodplain (one percent chance floodplain). The critical action floodplain is defined as the 500-year floodplain (0.2 percent chance floodplain). (2) The portion of a river valley that becomes covered with water when the river overflows its banks at flood stage. (3) The flat or nearly flat land along a river or stream or in a tidal area that is covered by water during a flood.

Fluvial Geomorphology: The study of landforms and processes associated with rivers.

Geomorphology: The study of the Earth's landscapes and landforms, the processes by which the landforms originated, their age, and the nature of the materials underlying them.

Gully Erosion: (1) Severe erosion in which trenches are cut to a depth greater than 30 centimeters (1 ft). Generally, ditches deep enough to cross with farm equipment are considered gullies. (2) The widening, deepening, and cutting back of small channels and waterways due to erosion.

Impaired Water body: Any water body that does not attain water quality standards due to an individual pollutant, multiple pollutants, pollution, or an unknown cause of impairment.

Surface Runoff: Precipitation, snow melt, or irrigation in excess of what can infiltrate the soil surface and be stored in small surface depressions; a major transporter or nonpoint source pollutants.

Load Allocation (LA): The portion of a receiving water's loading capacity attributed either to one of its existing or future nonpoint sources of pollution or to natural background sources. Load allocations are best estimates of the loading, which may range from reasonably accurate estimates to gross allotments, depending on the availability of data and appropriate techniques for predicting the loading. Wherever possible, natural and nonpoint source loads should be distinguished.

Loading: The portion of a receiving water's loading capacity attributed either to one of its existing or future nonpoint sources of pollution or to natural background sources. Load allocations are best estimates of the loading, which may range from reasonably accurate estimates to gross allotments, depending on the availability of data and appropriate techniques for predicting the loading. Wherever possible, natural and nonpoint source loads should be distinguished.

Mass Wasting: Downslope transport of soil and rocks due to gravitational stress.

NPDES Permit: An individual or general permit issued by the MDEQ Permit Board pursuant to regulations adopted by the Commission under Mississippi Code Annotated (as amended) § 49-17-17 and § 49-17-29 for discharges into State waters.

Narrative Criteria: Nonquantitative guidelines that describe the desired water quality goals.

Natural Waters: Flowing water within a physical system that has developed without human intervention, in which natural processes continue to take place.

Nonpoint Source: The pollution from sources which generally are not controlled by establishing effluent limitations under sections 301, 302, and 402. Nonpoint source pollutants are not traceable to a discrete identifiable origin, but generally result from land runoff, precipitation, drainage, or seepage. This water may contain pollutants that come from land use activities such as agriculture, construction, silviculture, surface mining, disposal of wastewater, hydrologic modifications, and urban development.

Numeric Target: A measurable value determined for the pollutant of concern which, if achieved, is expected to result in the attainment of water quality standards in the listed water body.

Phased Approach: Under the phased approach to TMDL development, load allocations and wasteload allocations are calculated using the best available data and information recognizing the need for additional monitoring data to accurately characterize sources and loadings. The phased approach is typically employed when nonpoint sources dominate. It provides for the implementation of load reduction strategies while collecting additional data.

Point Source: Pollution from a stationary location or fixed facility from which pollutants are discharged or emitted. Pollution from any single identifiable source, e.g., a pipe, ditch, ship, ore pit, or factory smokestack.

Pollutant: Includes, but not limited to, any element, substance, compound, or mixture, including disease-causing agents, which after release into the environment and upon exposure, ingestion, inhalation, or assimilation into any organism, either directly from the environment or indirectly by ingestion through food chains, will or may be reasonably be anticipated to cause death, disease, behavioral abnormalities, cancer, genetic mutation, physiological malfunctions (including malfunctions in reproduction) or physical deformations, in such organisms or their offspring; except that the term pollutant or contaminant shall not include petroleum, including crude oil or any fraction thereof which is not otherwise specifically listed or designated as a hazardous substance under subparagraphs (A) through (F) of paragraph (14) and shall not include natural gas, liquefied natural gas, or synthetic gas of pipeline quality (or mixtures of natural gas and such synthetic gas).

Pollution: Generally, the presence of matter or energy whose nature, location, or quantity produces undesired environmental effects. Under the Clean Water Act, for example, the term is defined as man-made or man-induced alteration of the physical, biological, and radiological integrity of water. Other pollution related terms include: agricultural pollution, air pollution, indoor air pollution, industrial waste pollution, manmade air pollution, natural pollution, noise pollution, oil pollution, sewage pollution, soil pollution, thermal pollution, water pollution, and wood burning stove pollution.

Reference Sites: Water bodies that are representative of the characteristics of the region and subject to minimal human disturbance.

Scouring: The removal of earth or rock by the action of running water or of a glacier.

Sediment: (1) The unconsolidated inorganic and organic material that is suspended in and being transported by surface water, or has settled out and deposited into beds. (2) Soil, sand, and minerals washed from land into water, usually after rain. They pile up in reservoirs, rivers, and harbors, destroying fish and wildlife habitat, and clouding the water so that sunlight cannot reach aquatic plants. Careless farming, mining, and building activities will expose sediment materials, allowing them to wash off the land after rainfall.

Sediment Delivery: Contribution of transported sediment to a particular location or part of a landscape.

Sediment Production: Delivery of colluvium or bedrock from hillslope to stream channel. The production rate is evaluated as the sum of the rates of colluvial bank erosion and sediment transport across channel banks.

Sediment Yield: The quantity of sediment arriving at a specific location.

Sedimentation: Process of deposition of waterborne or windborne sediment or other material; also refers to the infilling of bottom substrate in a waterbody by sediment (siltation).

Sheet Erosion: Also Sheetwash. Erosion of the ground surface by unconcentrated (i.e. not in rills) overland flow.

Sheetwash: Also Sheet Erosion. Erosion of the ground surface by unconcentrated (i.e. not in rills) overland flow.

Stage: The height of a water surface above an established datum plane.

Stream Restoration: Various techniques used to replicate the hydrological, morphological, and ecological features that have been lost in a stream due to urbanization, farming, or other disturbance.

Surface Runoff: Precipitation, snow melt, or irrigation in excess of what can infiltrate the soil surface and be stored in small surface depressions; a major transporter or nonpoint source pollutants.

Suspended Solids: Organic and inorganic particles (sediment) suspended in and carried by a fluid (water). The suspension is governed by the upward components of turbulence, currents, or colloidal suspension. Suspended-sediment usually consists of particles <0.1 mm, although size may vary according to current hydrological conditions. Particles between 0.1 mm and 1 mm may move as suspended or be deposited (bedload).

Thalweg: Deepest part of a stream channel.

Topography: The physical features of a geographic surface area including relative elevations and the positions of natural and man-made features.

Total Maximum Daily Load or TMDL: (1) The total allowable pollutant load to a receiving water such that any additional loading will produce a violation of water quality standards. (2) The sum of the individual waste load allocations and load allocations. A margin of safety is included with the two types of allocations so that any additional loading, regardless of source, would not produce a violation of water quality standards.

Turbidity: (1) A measure of opacity of a substance; the degree to which light is scattered or absorbed by a fluid. (2) A cloudy condition in water due to suspended silt or organic matter.

Waste: Useless, unwanted, or discarded material resulting from (agricultural, commercial, community, and industrial) activities. Wastes include solids, liquids, and gases.

Wasteload Allocation (WLA): (1) The portion of a receiving water's loading capacity that is allocated to one of its existing or future point sources of pollution. WLAs constitute a type of water quality based effluent limitation. (2) The portion of a receiving water's total maximum daily load that is allocated to one of its existing or future point sources of pollution. (3) The maximum load of pollutants each discharger of waste is allowed to release into a particular waterway. Discharge limits are usually required for each specific water quality criterion being, or expected to be, violated. The portion of a stream's total assimilative capacity assigned to an individual discharge.

Water Quality Criteria: Specific levels of water quality which, if reached, are expected to render a body of water suitable for its designated use. The criteria are based on specific levels of pollutants that would make the water harmful if used for drinking, swimming, farming, fish production, or industrial processes. Water quality criteria are comprised of numeric and narrative criteria. Numeric criteria are scientifically derived ambient concentrations developed by EPA or States for various pollutants of concern to protect human health and aquatic life. Narrative criteria are statements that describe the desired water quality goal.

Water Quality Standards: (1) Provisions of State or Federal law which consist of a designated use or uses for the water quality criteria for such waters based upon such uses. Water quality standards are to protect the public health or welfare, enhance the quality of water, and serve the purposes of the Clean Water Act. (2) A law or regulation that consists of the beneficial designated use or uses of a water body, the numeric and narrative water quality criteria that are necessary to protect the use or uses of that particular water body, and an antidegradation statement. (3) State-adopted and EPA-approved ambient standards for water bodies. The standards prescribe the use of the water body and establish the water quality criteria that must be met to protect designated uses.

Waters of the State: All waters within the jurisdiction of this State, including all streams, lakes, ponds, wetlands, impounding reservoirs, marshes, watercourses, waterways, wells, springs, irrigation systems, drainage systems, and all other bodies or accumulations of water, surface and underground, natural or artificial, situated wholly or partly within or bordering upon the State, and such coastal waters as are within the jurisdiction of the State, except lakes, ponds, or other surface waters which are wholly landlocked and privately owned, and which are not regulated under the Federal Clean Water Act (33 U.S.C.1251 et seq.).

Watershed: (1) The land area that drains (contributes runoff) into a stream. (2) The land area that drains into a stream; the watershed for a major river may encompass a number of smaller watersheds that ultimately combine at a common delivery point.

ABBREVIATIONS

ARS.....	Agricultural Research Service
BMP.....	Best Management Practice
CWA.....	Clean Water Act
CWPRU.....	Channel and Watershed Processes Research Unit
EPA.....	Environmental Protection Agency
HUC.....	Hydrologic Unit Code
IBI.....	Index of Biological Integrity
LA.....	Load Allocation
M-BISQ.....	Mississippi Benthic Index of Stream Quality
MARIS.....	Mississippi Automated Resource Information Service
MDEQ.....	Mississippi Department of Environmental Quality
MFC.....	Mississippi Forestry Commission
MOS.....	Margin of Safety
MS4.....	Municipal Separate Storm Sewer Systems
NPDES.....	National Pollution Discharge Elimination System
NRCS.....	Natural Resource Conservation Service
NSL.....	National Sedimentation Laboratory
TMDL.....	Total Maximum Daily Load
TSS.....	Total Suspended Solids
USGS.....	United States Geological Survey
WLA.....	Wasteload Allocation
WWTP.....	Wastewater Treatment Plant

REFERENCES

- Hupp, C.R. 1992. Riparian Vegetation Recovery Patterns Following Stream Channelization: A Geomorphic Perspective. *Ecology*. 73(4): 1209-1226.
- Kuhnle, Roger and Andrew Simon. 2000. Evaluation of Sediment Transport Data for Clean Sediment TMDLs. *National Sedimentation Laboratory Report 17*. Oxford, MS. United States Department of Agriculture. Agricultural Research Service. National Sedimentation Laboratory. Channel and Watershed Processes Research Unit.
- Lee, C.C. 1998. *Environmental Engineering Dictionary*. Third Edition. Government Institutes, Inc. Rockville, MD.
- MDEQ, MSWCC, and USDA SCS. 1994. *Planning and Design Manual for the Control of Erosion, Sediment, and Stormwater*.
- MDEQ. 2002a. *Mississippi List of Water Bodies, Pursuant to Section 303(d) of the Clean Water Act*.
Office of Pollution Control. Jackson, MS.
- MDEQ. 2002b. *State of Mississippi Water Quality Criteria for Intrastate, Interstate, and Coastal Waters*. Office of Pollution Control. Jackson, MS.
- MDEQ. 2003a. *Development and Application of the Mississippi Benthic Index of Stream Quality (M-BISQ)*. Prepared by Tetra Tech, Inc., Owings Mills, MD, for the Mississippi Department of Environmental Quality, Office of Pollution Control, Jackson, MS. (For further information on this document, contact Randy Reed at 601-961-5158).
- MDEQ. 2003b. *James Creek Total Maximum Daily Load for Biological Impairment due to Sediment*. Office of Pollution Control. Jackson, MS.
- MDEQ. 2004a. *Stressor Identification for Thompson Creek*. Office of Pollution Control. Jackson, MS.
- MDEQ. 2004b. *Stressor Identification for West Little Thompson Creek*. Office of Pollution Control. Jackson, MS.
- MFC. 2000. *Mississippi's BMPs: Best Management Practices for Forestry in Mississippi*. Publication # 107.
- MFC. 2004. *2003 BMP Implementation Survey – November 2002 to July 2003*. Mississippi's Voluntary Silvicultural Best Management Practices Implementation Monitoring Program.
- NRCS. 2000. *Field Office Technical Guide Transmittal No. 61*.
- Rinaldi, M. and Simon, A. 1998. Adjustments of the Arno River, Central Italy. *Geomorphology*. (22):57-71

- Rosgen, D.L. 1985. A Classification of Natural Rivers. *Catena*. (22):169-199.
- Rosgen, D.L. 1996. *Applied River Morphology*. Wildland Hydrology. Pagosa Springs, CO.
- Simon, Andrew. 1989. A Model of Channel Response in Disturbed Alluvial Channels. *Earth Surface Processes and Landforms*. 14(1):11-26.
- Simon, Andrew and C.R. Hupp. 1986. Channel Evolution in Modified Tennessee Channels. Proceedings of the *Fourth Federal Interagency Sedimentation Conference*. March 1986. Las Vegas, NV. v. 2, Section 5, 5-71 to 5-82.
- Simon, Andrew and C.R. Hupp. 1992. Geomorphic and Vegetative Recovery Processes along Modified Stream Channels of West Tennessee. *U.S. Geological Survey Open-File Report*. 91-502.
- Simon, A., Bingner, R.L., Langendoen, E.L., and Alonso, C.V. 2002a. *Actual and Reference Sediment Yields for the James Creek Watershed--Mississippi*. Research Report No. 31, USDA-ARS National Sedimentation Laboratory, xvi+185 pp.
- Simon, Andrew, Roger A. Kuhnle, and Wendy Dickerson. 2002b. “Reference” and “Impacted” Rates of Suspended-Sediment Transport for Use in Developing Clean Sediment TMDLs: Mississippi and the Southeastern United States. *National Sedimentation Laboratory Report 25*. Oxford, MS. United States Department of Agriculture. Agricultural Research Service. National Sedimentation Laboratory. Channel and Watershed Processes Research Unit.