



# State of Mississippi

**TATE REEVES**  
Governor

## **MISSISSIPPI DEPARTMENT OF ENVIRONMENTAL QUALITY**

CHRIS WELLS, EXECUTIVE DIRECTOR

### **2027 Annual Monitoring Network Plan 30-day Public Review**

The Calendar Year (CY) 2027 Annual Monitoring Network Plan is available for public review from May 21, 2026, through June 22, 2026. Any comments on this report should be submitted by emailing Michael Jordan at <https://www.mdeq.ms.gov/jordan-michael> no later than June 22, 2026.



MISSISSIPPI DEPARTMENT OF  
ENVIRONMENTAL QUALITY





## MONITORING NETWORK PLAN 2027



## Table of Contents

---

<b>Table of Figures</b> .....	3
<b>Table of Tables</b> .....	3
<b>1.0 Background</b> .....	4
<b>2.0 Overview</b> .....	4
<b>3.0 Site Discussion</b> .....	5
<b>4.0 Metropolitan Statistical Area (MSA)-NON MSA</b> .....	5
<b>5.0 NCore Site Tables</b> .....	9
<b>6.0 Network Tables</b> .....	9
<b>7.0 Site Location Coordinates</b> .....	12
<b>8.0 MSA and Pollutant Maps with Census</b> .....	13
<b>9.0 Site Maps and Current Photos</b> .....	15
<b>10.0 Regional Monitoring Agreement</b> .....	35
<b>11.0 Appendix: A</b> .....	40
<b>12.0 Appendix: B</b> .....	41
<b>13.0 Appendix: C</b> .....	42

Table of Figures

Figure 1 - Mississippi MSA Areas 2026 ..... 13

Figure 2 - Mississippi Air Monitoring Network..... 14

Figure 3 - Cleveland Pictures ..... 16

Figure 4 - Hernando Pictures..... 18

Figure 5 - Tupelo Pictures..... 20

Figure 6 - NCore Pictures..... 22

Figure 7 - Hinds CC Pictures..... 24

Figure 8 - Gulfport Pictures ..... 26

Figure 9 - Waveland Pictures ..... 28

Figure 10 - Pascagoula Pictures..... 30

Figure 11 - Hattiesburg Pictures..... 32

Figure 12 - Pascagoula (Cherokee) Pictures ..... 34

Table of Tables

Table 1 - NCore Site ..... 9

Table 2 - PM10..... 9

Table 3 - PM2.5..... 10

Table 4 - SO2 and TRS..... 10

Table 5 - NOx/NOy ..... 11

Table 6 - CO..... 11

Table 7 - Ozone..... 11

Table 8 - Site Location Coordinates ..... 12

Table 9 – Appendix A: Sitting Criteria and Residence Time Summary ..... 40

Table 10 - Appendix B: QAPP, QMP, and SOP Approval/Accepted/Reviewed Date ..... 41

## 1.0 Background

Federal Regulations (40 CFR 58.10) require that State and Local Agencies operating an ambient air quality monitoring network shall review their air quality monitoring network on an annual basis. Any needed modifications to the network should be identified. A detailed monitoring network description should also be included. In addition, the plan shall be available for public comment. MDEQ's Monitoring Network Plan is available on the MDEQ website at <http://www.deq.state.ms.us>.

The Monitoring Network review that is specified in *40 CFR 58.10* contains the following elements that apply to each monitoring site:

- The Air Quality System (AQS) site identification number.
- The location, including street address and geographical coordinates.
- The sampling and analysis method(s) for each measured parameter.
- The operating schedules for each monitor.
- Any proposals to remove or move a monitoring station within a period of 18 months following plan submittal.
- The monitoring objective and spatial scale of representativeness for each monitor as defined in appendix D of part 58.
- The identification of any sites that are suitable and sites that are not suitable for comparison against the annual Particulate Matter (PM)<sub>2.5</sub> and Ozone National Ambient Air Quality Standards (NAAQS) as described in part 58.30.
- The Metropolitan Statistical Area (MSA), Core Based Statistical Area (CBSA), Consolidated Statistical Area (CSA) and other areas represented by the monitor.
- The annual monitoring network plans and/or periodic network assessments are subject to Regional approval according to part 58.14.

## 2.0 Overview

In the State of Mississippi, the Mississippi Department of Environmental Quality (MDEQ) is the only agency operating an ambient air quality network. There are no local agencies. In Mississippi, as in other State agencies, network monitors are operated for a variety of monitoring objectives. These objectives include determining if an area of the State meets the NAAQS, for public information such as the Environmental Protection Agency (EPA) AirNow data mapping web site, Air Quality Index (AQI) reporting for public information, background data collection, spatial considerations, and special projects. The AQI forecast is currently reported for the Jackson Metro area, Biloxi/Gulfport area and DeSoto County area on the MDEQ web site at <https://www.mdeq.ms.gov/air/air-quality-forecast/>. In addition, hourly Ozone (O<sub>3</sub>), Particulate Matter (PM), Nitrogen Dioxide (NO<sub>2</sub>), Sulfur Dioxide (SO<sub>2</sub>), and Carbon Monoxide (CO) data are reported to the EPA AirNow website, if applicable. Note: MDEQ initiated the EPA approved correction factor for all the Teledyne API T640/T640x particulate matter instruments in MDEQ's monitoring network. The data collection start-up date utilizing the correction factor began January 01, 2024.

All site data (except for the Pascagoula Cherokee site) are suitable for the NAAQS comparisons per appendices A, C, D, and E. See Appendix B for a list of MDEQ's Quality Documents and their approval and review dates.

40 CFR 58 has set minimum monitoring requirements for the pollutants that are to be compared with the NAAQS. These minimum requirements are based on population, the level of monitored pollutants, and MSA as defined in the latest US Census information (See Section 8.0 for the MSA and Pollutant Maps with Census). The tables below and the discussion on the following pages summarize this information.

### 3.0 Site Discussion

Mississippi's air quality monitoring network has been reviewed based on the historic monitoring data, air quality monitoring regulations, data representation based on spatial considerations, special data needs and changes needed based on the monitoring regulations. The items used in the evaluation were the AQS database, the 40 Code of Federal Regulations (CFR) parts 53 and 58 documents, census data and maps. All monitors operated by MDEQ are State and Local Air Monitoring Stations (SLAMS) except for the Pascagoula Cherokee Monitoring Station.

The following sections describe the purposes, and any changes related to each site in the ambient air monitoring network in the State of Mississippi based on our review of existing monitoring efforts.

### 4.0 Metropolitan Statistical Area (MSA)-NON MSA

#### Memphis MSA:

1. **Hernando** (DeSoto Co. 28.033.0002) – MDEQ operates an O<sub>3</sub> monitor, and a continuous Federal Equivalent Method (FEM) PM<sub>2.5</sub> monitor at this site that is designated as a transport monitor and therefore is a required monitor. MDEQ has a Regional Monitoring Agreement (RMA) with Shelby County, TN Health Department, and Arkansas Department of Energy and Environment Division of Environmental Quality to meet Appendix D requirements section 2, e. A copy of this agreement is attached (See Section 10.0) and is on file at EPA Region 4. MDEQ has no plans to change the current monitoring efforts at this site.

- **Site Approval Status:** Site and monitors meet all design criteria for the monitoring network. See Appendix A for a summary of MDEQ's siting criteria information.
- **Sampling train:** The probe tubing is Fluorinated Ethylene Propylene (FEP), and the probe fittings are Perfluoroalkoxy (PFA). The stainless-steel fitting at the funnel has been drilled and the FEP tubing pushed through the fitting and extends into the funnel. See Appendix A for a summary of MDEQ's O<sub>3</sub> Residence Time.

#### Jackson MSA:

1. **Jackson NCore** (Hinds Co. 28.049.0020) – The NCore site contains a full complement of monitors, including meteorological. The monitoring parameters currently include O<sub>3</sub>, SO<sub>2</sub>, CO, Nitric Oxides as NO<sub>y</sub>, manual Federal Reference Method (FRM) PM<sub>2.5</sub>, continuous FEM PM<sub>2.5</sub>, continuous FEM PM<sub>10</sub>, FEM PM<sub>10-2.5</sub>, speciated PM<sub>2.5</sub>, wind speed, wind direction, ambient temperature, and relative humidity. The FEM PM<sub>2.5</sub> continuous monitor operates as the primary PM<sub>2.5</sub> monitor while the FRM PM<sub>2.5</sub> will operate 1/3-day. MDEQ has no plans to change the current monitoring efforts at this site.

- **Site Approval Status:** Site and monitors meet all design criteria for the monitoring network. See Appendix A for a summary of MDEQ's Jackson NCore siting criteria information.

- **Sampling train:** The probe tubing is FEP, and the probe fittings are PFA. The stainless-steel fitting at the funnel has been drilled and the FEP tubing pushed through the fitting and extends into the funnel. See Appendix A for a summary of MDEQ's O<sub>3</sub>, SO<sub>2</sub>, CO Residence Time.
2. **Jackson Metro MSA** (Hinds Co. 28.049.0021) – MDEQ operates an Ozone monitor, and a continuous FEM PM<sub>2.5</sub> monitor at this site. MDEQ has no plans to change the current monitoring efforts at this site.
    - **Site Approval Status:** Site and monitors meet all design criteria for the monitoring network. See Appendix A for a summary of MDEQ's Hinds Co. siting criteria information.
    - **Sampling train:** The probe tubing is FEP, and the probe fittings are PFA. The stainless-steel fitting at the funnel has been drilled and the FEP tubing pushed through the fitting and extends into the funnel. See Appendix A for a summary of MDEQ's O<sub>3</sub> Residence Time.

### **Hattiesburg MSA:**

1. **Hattiesburg** (Forrest Co. 28.035.0004) – MDEQ operates a continuous FEM PM<sub>2.5</sub> monitor at this site. In addition, a collocated FRM PM<sub>2.5</sub> monitor will continue to operate on a 1/6-day schedule to meet MDEQ's collocated requirements. MDEQ has no plans to change the current monitoring efforts at this site.
  - **Site Approval Status:** Site and monitors meet all design criteria for the monitoring network. See Appendix A for a summary of MDEQ's Hattiesburg siting criteria information.

### **Gulfport-Biloxi-Pascagoula MSA:**

1. **Gulfport** (Harrison Co. 28.047.0008) – MDEQ operates an O<sub>3</sub> monitor, and a continuous FEM PM<sub>2.5</sub> monitor at this site. MDEQ has no plans to change the current monitoring efforts at this site.
  - **Site Approval Status:** Site and monitors meet all design criteria for the monitoring network. See Appendix A for a summary of MDEQ's Gulfport siting criteria information.
  - **Sampling train:** The probe tubing is FEP, and the probe fittings are PFA. The stainless-steel fitting at the funnel has been drilled and the FEP tubing pushed through the fitting and extends into the funnel. See Appendix A for a summary of MDEQ's O<sub>3</sub> Residence Time.
2. **Waveland** (Hancock Co. 28.045.0003) – MDEQ operates an O<sub>3</sub> monitor, and a continuous FEM PM<sub>2.5</sub> monitor at this site. MDEQ has no plans to change the current monitoring efforts at this site.
  - **Site Approval Status:** Site and monitors meet all design criteria for the monitoring network. See Appendix A for a summary of MDEQ's Waveland siting criteria information.
  - **Sampling train:** The probe tubing is FEP, and the probe fittings are PFA. The stainless-steel fitting at the funnel has been drilled and the FEP tubing pushed through the fitting and extends into the funnel. See Appendix A for a summary of MDEQ's O<sub>3</sub> Residence Time.

3. **Pascagoula** (Jackson Co. 28.059.0006)- MDEQ operates an O<sub>3</sub>, SO<sub>2</sub>, nitrogen oxide (NO<sub>x</sub>) monitor, and a continuous FEM PM<sub>2.5</sub> monitor at this site. The NO<sub>x</sub> monitor is designated as an RA-40 site. The SO<sub>2</sub> monitor is designated as a population weighted exposure index (PWEI) site. MDEQ has no plans to change the current monitoring efforts at this site.
  - **Site Approval Status:** Site and monitors meet all design criteria for the monitoring network. See Appendix A for a summary of MDEQ's Pascagoula siting criteria information.
  - **Sampling train:** The probe tubing is FEP, and the probe fittings are PFA. The stainless-steel fitting at the funnel has been drilled and the FEP tubing pushed through the fitting and extends into the funnel. See Appendix A for a summary of MDEQ's O<sub>3</sub>, SO<sub>2</sub> and NO<sub>x</sub> Residence Time.
  
4. **Pascagoula Cherokee** (Jackson Co. 28.059.0007) MDEQ is in the process of establishing a Special Purpose Monitoring (SPM) station in the Cherokee Community of Pascagoula, MS. MDEQ has a tentative startup date of July 01, 2026. This SPM air monitoring station will be operated for one year near the Cherokee community, which is situated in close proximity to the Bayou Casotte Industrial Complex. The pollutants of concern identified by EPA and the Agency for Toxic Substances and Disease Registry (ATSDR) for the Cherokee Community include particulate matter smaller than 10 microns in diameter (PM<sub>10</sub>), PM<sub>10</sub> metals, volatile organic compounds (VOC), and total reduced sulfur (TRS) compounds. PM<sub>2.5</sub>, PM<sub>10</sub> and TRS compounds will be monitored continuously, while PM<sub>10</sub> metals and VOCs will be sampled on a 1 in 6-day schedule. Additionally, near fence line SPODs that trigger sample canisters are proposed for the project to capture any high concentration VOC plumes that may occur outside of a regularly scheduled sample day near the Bayou Casotte Industrial Complex. Note: the collection duration of each random SPOD sample [up to twenty-five (25) in total] will last for no more than one (1) hour after the initial detection of an established total VOC concentration.

This proposed multi-pollutant air quality monitoring project will obtain quality, long term monitoring data necessary to identify the presence of any air quality problem associated with the pollutants of greatest concern in the Cherokee community. The main concern for the Cherokee community is the potential for cumulative risk associated with the proximity to an industrial complex housing multiple types of industrial sources.

The benefit of identifying whether an air quality problem exists in this Environmental Justice (EJ) community will be to (1) put citizens' minds at ease should no air quality problem be found or (2) give MDEQ and other agencies the necessary data to identify ways to mitigate any air quality problem and/or reduce any unacceptable risk to the community.

- **Site Approval Status:** Site and monitors meet all design criteria for the monitoring network. See Appendix A for a summary of MDEQ's Pascagoula Cherokee siting criteria information.
- **Sampling train:** The probe tubing is FEP, and the probe fittings are PFA. The stainless-steel fitting at the funnel has been drilled and the FEP tubing pushed through the fitting and extends into the funnel. See Appendix A for a summary of MDEQ's TRS Residence Time.

**Non- MSA Sites:**

1. **Meridian** (Lauderdale Co. 28.075.0003) – The Mississippi Department of Environmental Quality (MDEQ) formally requested approval from the U.S. Environmental Protection Agency (EPA) Region 4 for the permanent shutdown of the Meridian ambient air quality monitor for ozone located in Lauderdale County, Mississippi. On February 25, 2026 EPA approved MDEQ’s permanent request to shut down the Meridian ozone site. See Appendix: C for the approval letter from EPA.
2. **Tupelo** (Lee Co. 28.081.0005) – An O3 monitor is operated at this site. MDEQ has no plans to change the current monitoring efforts at this site.
  - **Site Approval Status:** Site and monitors meet all design criteria for the monitoring network. See Appendix A for a summary of MDEQ’s siting criteria information.
  - **Sampling train:** The probe tubing is FEP, and the probe fittings are PFA. The stainless-steel fitting at the funnel has been drilled and the FEP tubing pushed through the fitting and extends into the funnel. See Appendix A for a summary of MDEQ’s O3 Residence Time.
3. **Cleveland** (Bolivar Co. 28.011.0002) – MDEQ operates an O3 monitor, and a continuous FEM PM2.5 monitor (Background) at this site. MDEQ has no plans to change the current monitoring efforts at this site.
  - **Site Approval Status:** Site and monitors meet all design criteria for the monitoring network. See Appendix A for a summary of MDEQ’s Cleveland siting criteria information.
  - **Sampling train:** The probe tubing is FEP, and the probe fittings are PFA. The stainless-steel fitting at the funnel has been drilled and the FEP tubing pushed through the fitting and extends into the funnel. See Appendix A for a summary of MDEQ’s O3 Residence Time.

## 5.0 NCore Site Tables

AQS ID	MSA	Site Name	County	City	Latitude	Longitude	Street Address	Elevation (meters)	Site start date	Location Setting
28-049-0020	Jackson	Jackson NCore	Hinds	Jackson	32.32906	-90.18267	232 E Woodrow Wilson	93	7/01/2013	Urban and city center
Parameter	Monitoring Objective	Measurement Scale	Designation	Type	Method			Schedule	Comment	
CO	Pop. Exp.	Neighborhood	NCore	Continuous Monitor	Non-Dispersive IR			Jan-Dec		
NO <sub>y</sub>	Pop. Exp.	Neighborhood /Urban	NCore	Continuous Monitor	Chemiluminescence			Jan-Dec		
O <sub>3</sub>	Pop. Exp.	Neighborhood /Urban	NCore	Continuous Monitor	UV Photometry			Jan-Dec		
SO <sub>2</sub>	Pop. Exp.	Neighborhood	NCore	Continuous Monitor	UV fluorescence			Jan-Dec		
FRM PM <sub>2.5</sub>	Pop. Exp.	Neighborhood	NCore	Manual Reference Monitor (3 Day)	Gravimetric Analysis			Jan-Dec		
FEM PM <sub>2.5</sub>	Pop. Exp.	Neighborhood	NCore	Continuous Monitor	Broadband Spectroscopy			Jan-Dec	T640x	
PM <sub>2.5</sub> Speciation	Pop. Exp.	Neighborhood	NCore	Manual Monitor (3 Day)	Multiple Methods			Jan-Dec		
PM coarse	Pop. Exp.	Neighborhood	NCore	Continuous Monitor	Difference by Broadband Spectroscopy			Jan-Dec	T640x	
Meteorological	--	--	NCore	--	Wind speed, direction, ambient temperature, humidity			Jan-Dec		
Radiation	Pop. Exp.	Urban	Rad Net	Continuous / Manual Monitor				Jan-Dec	Non NCore	

Table 1 - NCore Site

## 6.0 Network Tables

### NETWORK DESIGN TABLES MISSISSIPPI

#### PM10

Location	County	MSA	AQS ID	Monitoring Objective	Measurement Scale	MSA Min Required	Collocated	Type	Method	Schedule	Comment
Jackson NCore	Hinds	Jackson	28-049-0020	Pop. Exp.	Neighborhood	1	No	Continuous	639	Jan-Dec	T640x
Pascagoula Cherokee	Jackson	Pascagoula	28-059-0007	Pop. Exp.	Neighborhood	0	No	Continuous	639	One Year from Startup	T640x

Table 2 - PM10

**PM2.5**

Location	County	MSA	AQS ID	Monitoring Objective	Measurement Scale	MSA Min Required	Design Value (2025)	Collocated	Type	Method	Schedule
Hernando	DeSoto	Memphis	28-033-0002	Transport	Urban	3	9.0	No	Continuous	636 T640	Jan-Dec
Hattiesburg	Forrest	Hattiesburg	28-035-0004	Pop. Exp.	Neighborhood	1	9.2	Yes	Manual (1/6 day) collocated Continuous	145 SEQ 636 T640	Jan-Dec Jan-Dec
Waveland	Hancock	Gulf/Biloxi	28-045-0003	Pop. Exp.	Neighborhood	1	7.9	No	Continuous	636 T640	Jan-Dec
Gulfport	Harrison	Gulf/Biloxi	28-047-0008	Pop. Exp.	Neighborhood	1	8.0	No	Continuous	636 T640	Jan-Dec
Pascagoula	Jackson	Pascagoula	28-059-0006	Pop. Exp.	Neighborhood	1	8.1	No	Continuous	636 T640	Jan-Dec
Pascagoula Cherokee	Jackson	Pascagoula	28-059-0007	Pop. Exp.	Neighborhood	0	N/A	No	Continuous	636 T640x	One year from startup
Jackson NCore	Hinds	Jackson	28-049-0020	Pop. Exp.	Neighborhood	2	8.8	No	PM10-2.5 (primary)  Manual (3 Day) Continuous	638 T640x 640 T640x 145 SEQ	Jan-Dec Jan-Dec Jan-Dec
Jackson	Hinds	Jackson	28-049-0021	Pop. Exp.	Neighborhood	2	9.3	No	Continuous	636 T640	Jan-Dec
Cleveland	Bolivar	N/A	28-011-0002	Background	Urban	0	8.4	No	Continuous	636 T640	Jan-Dec

**Comments:** All manual monitors are FRM and classified as SLAMS. The continuous FEM monitors will be primary.

**Table 3 - PM2.5**

**SO2 and TRS**

Location	County	MSA	AQS ID	Monitoring Objective	Measurement Scale	MSA Min Required	Type	Method	Schedule
Jackson NCore	Hinds	Jackson	28-049-0020	Pop. Exp.	Neighborhood	1	Continuous	600	Jan-Dec
Pascagoula	Jackson	Pascagoula	28-059-0006	Pop. Exp.	Neighborhood	0	Continuous	060	Jan-Dec
Pascagoula Cherokee	Jackson	Pascagoula	28-059-0007	Pop. Exp.	Neighborhood	0	Continuous	N/A	One year from startup

**Comments:** All monitors are classified as SLAMS, Except the Pascagoula Cherokee Site

**Table 4 - SO2 and TRS**

**NO<sub>x</sub>/NO<sub>y</sub>**

Location	County	MSA	AQS ID	Monitoring Objective	Measurement Scale	MSA Min Required	Type	Method	Schedule
Jackson NCore	Hinds	Jackson	28-049-0020	Pop. Exp.	Neighborhood /Urban	1	Continuous	699	Jan-Dec
Pascagoula	Jackson	Pascagoula	28-059-0006	Pop. Exp.	Neighborhood	1	Continuous	099	Jan-Dec

Comments: All monitors are classified as SLAMS

Table 5 - NO<sub>x</sub>/NO<sub>y</sub>**CO**

Location	County	MSA	AQS ID	Monitoring Objective	Measurement Scale	MSA Min Required	Type	Method	Schedule
Jackson NCore	Hinds	Jackson	28-049-0020	Pop. Exp.	Neighborhood	1	Continuous	055	Jan-Dec

Table 6 - CO

**OZONE**

Location	County	MSA	AQS ID	Monitoring Objective	Measurement Scale	MSA Min Required	Design Value (2025)	Type	Method	Schedule
Cleveland	Bolivar	N/A	28-011-0002	Pop. Exp.	Urban	0	62	Continuous	UV Absorp	Mar - Oct
Gulfport	Harrison	Gulf/Biloxi/Pas	28-047-0008	Pop. Exp.	Urban	2	68	Continuous	UV Absorp	Mar - Oct
Waveland	Hancock	Gulf/Biloxi/Pas	28-045-0003	Pop. Exp.	Urban	2	64	Continuous	UV Absorp	Mar - Oct
Hernando	DeSoto	Memphis	28-033-0002	Pop. Exp.	Urban	3	69	Continuous	UV Absorp	Mar - Oct
Jackson	Hinds	Jackson	28-049-0021	Pop. Exp.	Urban	2	62	Continuous	UV Absorp	Mar - Oct
Jackson NCore	Hinds	Jackson	28-049-0020	Pop. Exp.	Urban	2	64	Continuous	UV Absorp	Jan - Dec
Pascagoula	Jackson	Gulf/Biloxi/Pas	28-059-0006	Pop. Exp.	Urban	2	66	Continuous	UV Absorp	Mar - Oct
Tupelo	Lee	N/A	28-081-0005	Pop. Exp.	Urban	0	61	Continuous	UV Absorp	Mar - Oct

Comments: All monitors are classified as SLAMS

Table 7 - Ozone

## 7.0 Site Location Coordinates

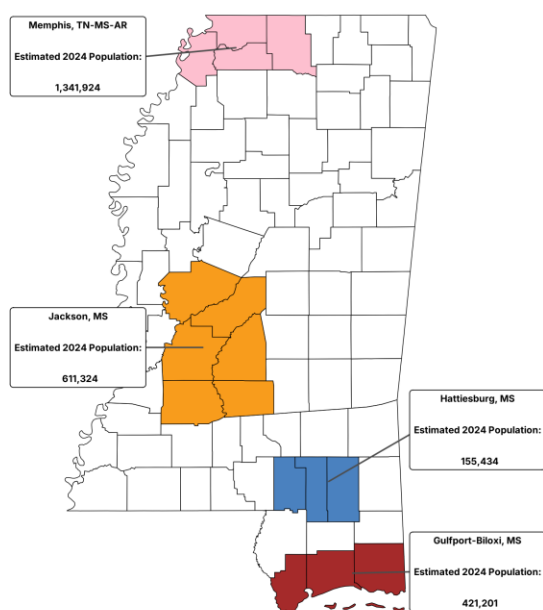
Site ID	Latitude	Longitude	Site Name	County	Address
28-011-0002	33.75065	-90.73418	Cleveland	Bolivar	HWY 8 Cleveland, MS (Delta State)
28-033-0002	34.82063	-89.9878	Hernando	Desoto	5 East Sout Street
28-035-0004	31.32399	-89.29222	Hattiesburg	Forrest	101 Ferguson Street
28-045-0003	30.30092	-89.39596	Waveland	Hancock	400 Baltic Street
28-047-0008	30.390083	-89.049709	Gulfport YC	Harrison	47 Maples Drive
28-049-0021	32.34673	-90.22576	Hinds CC	Hinds	3925 Sunset Drive
28-049-0020	32.32906	-90.18267	Jackson NCore	Hinds	232 E. Woodrow Wilson
28-059-0006	30.37805	-88.53389	Pascagoula	Jackson	Hospital Rd./LT Eugene J Majure Dr.
28-081-0005	34.26488	-88.76624	Tupelo	Lee	West Jackson at Tupelo Airport
28-059-0007	30.3524	-88.5090	Pascagoula (Cherokee)	Jackson	5305 Ladner Rd

**Table 8 - Site Location Coordinates**

## 8.0 MSA and Pollutant Maps with Census

**Mississippi MSA Population Estimates & Map**

Countries within MSA colored. Population is ACS 5-Year Estimate for 2024 (entire MSA)



Geographic Area	Population Estimate 2022	Population Estimate 2023	Population Estimate 2024
Gulfport-Biloxi, MS Metro Area	416839	418452	421201
Hattiesburg, MS Metro Area	172176	154567	155434
Jackson, MS Metro Area	591397	615908	611324
Memphis, TN-MS-AR Metro Area	1335804	1341606	1341924

Data Source: US Census Bureau ACS 5-Year Estimates via Sdyconus  
Generated: 2026-04-10

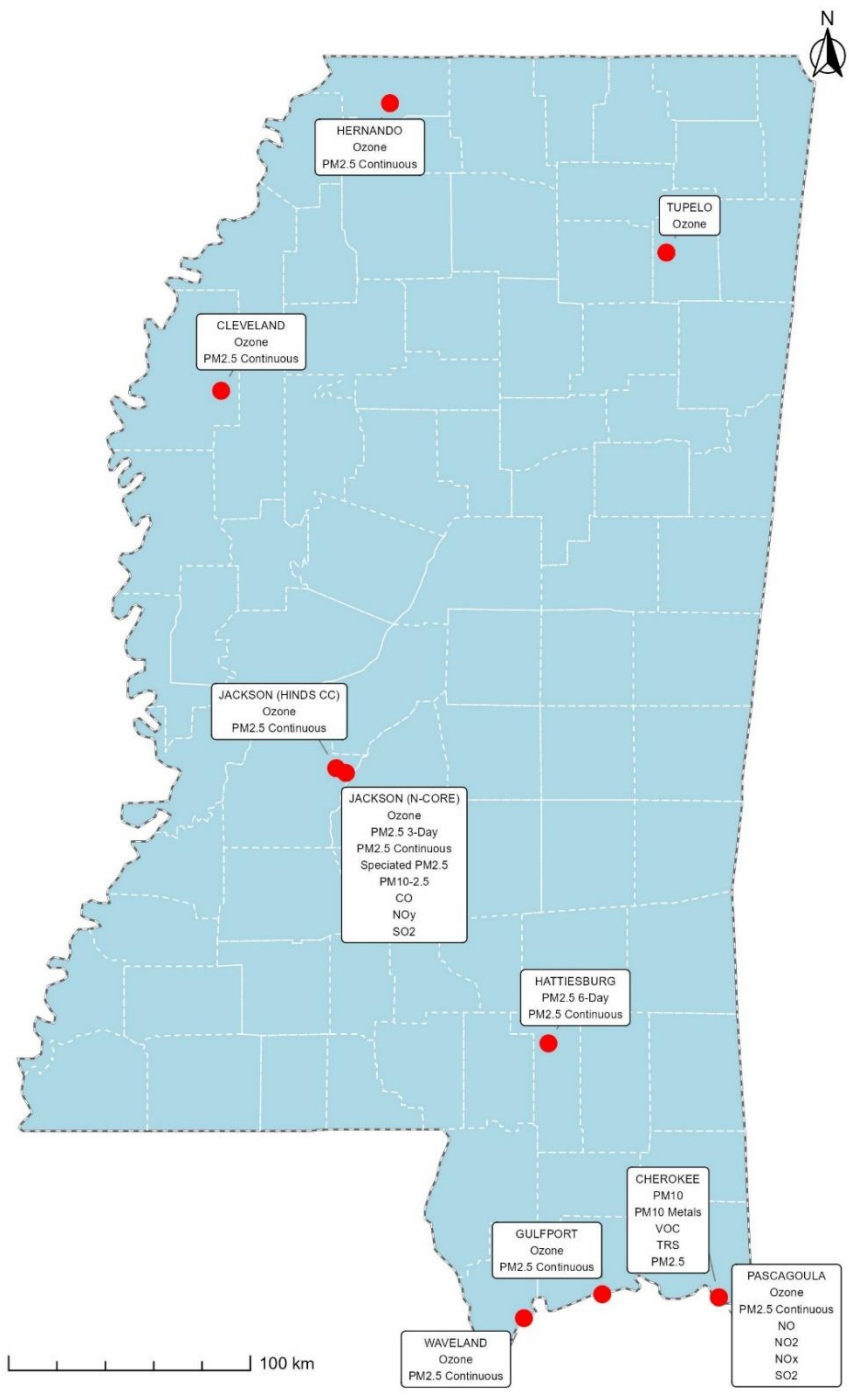
**Figure 1 - Mississippi MSA Areas 2026**

**MISSISSIPPI MSA AREAS 2026**

- MEMPHIS – DeSoto, Tunica, Marshall, Tate
- JACKSON – Hinds, Rankin, Copiah, Simpson, Madison
- HATTIESBURG – Lamar, Forrest, Perry
- GULFPORT-BILOXI-PASAGOULA – Hancock, Harrison, Jackson

# Mississippi Air Monitoring Network (2026)

Monitoring sites and primary pollutants measured



Source: MDEQ Data

Figure 2 - Mississippi Air Monitoring Network

## 9.0 Site Maps and Current Photos

### CLEVELAND



Cleveland- North (2026)



Cleveland- South (2026)



Cleveland- East (2026)



Cleveland- West (2026)



Cleveland- 28-011-0002 (2026)

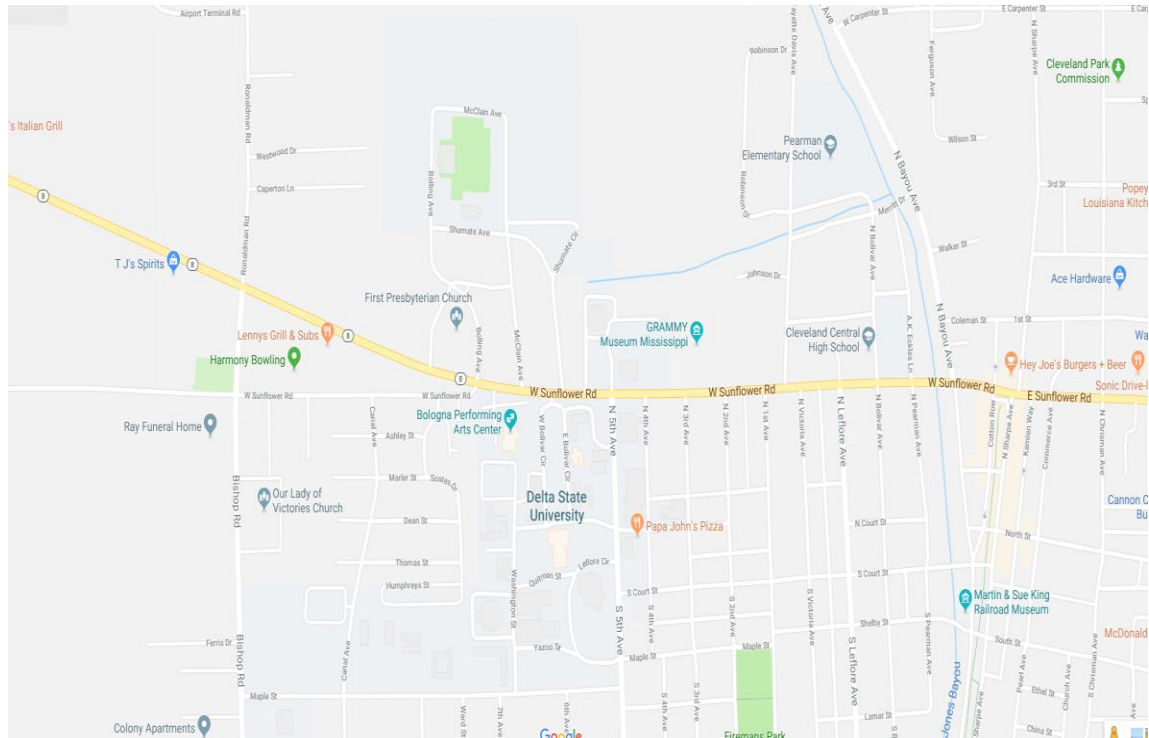


Figure 3 - Cleveland Pictures

## HERNANDO



Hernando- North (2026)



Hernando- South (2026)



Hernando- East (2026)



Hernando- West (2026)



Hernando- 28-033-0002 (2026)

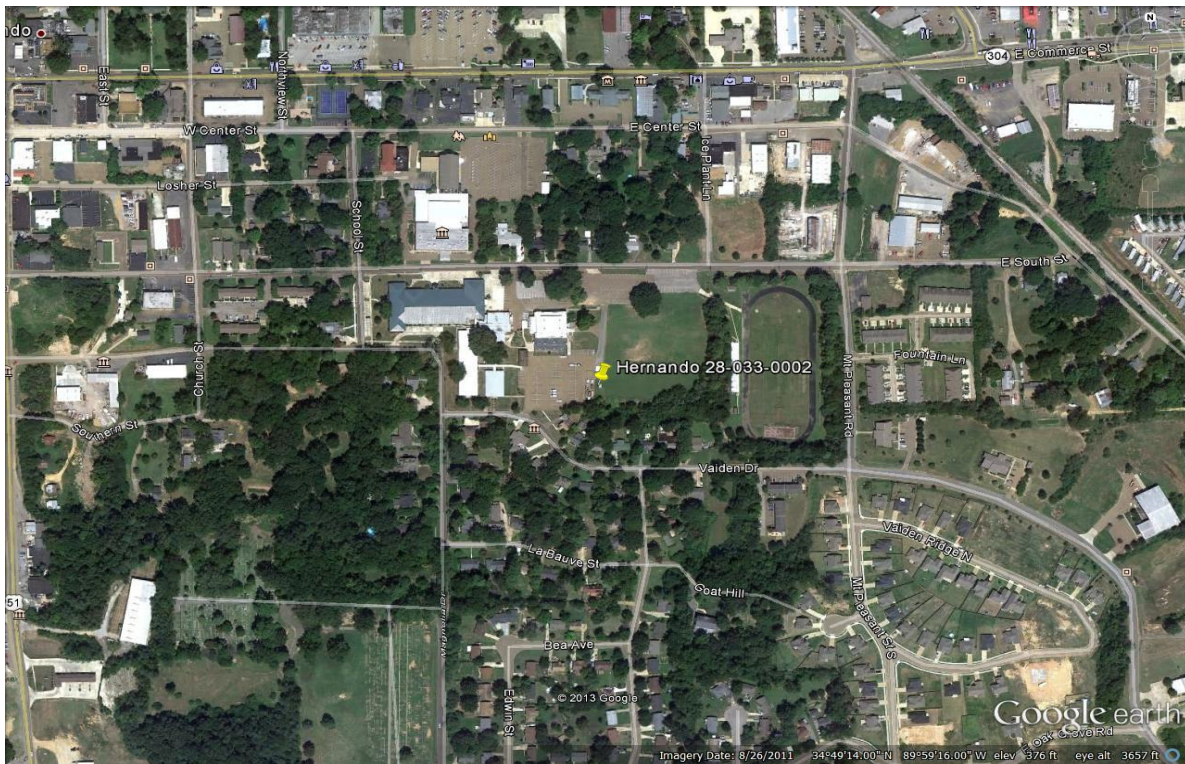
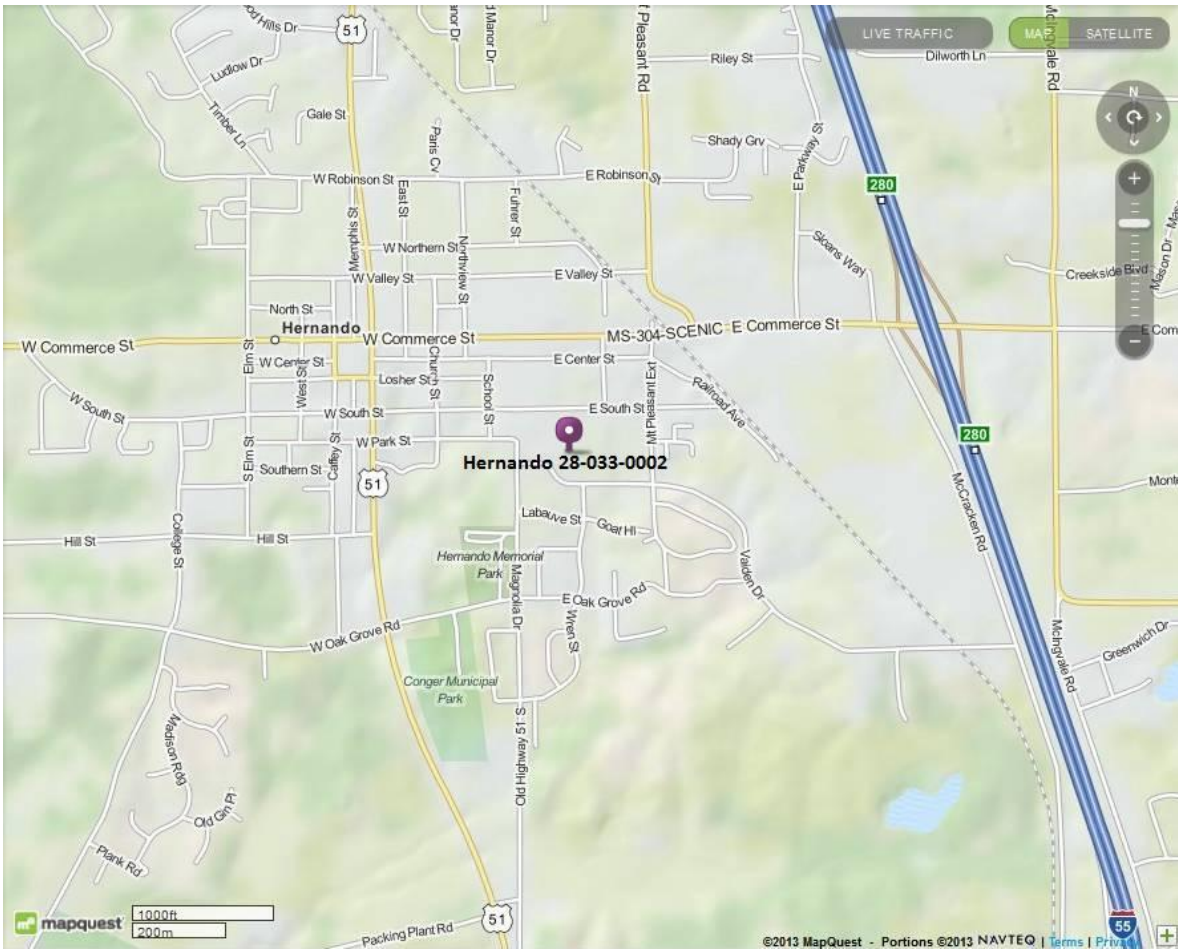


Figure 4 - Hernando Pictures

**TUPELO**



Tupelo- North (2026)



Tupelo- South (2026)



Tupelo- East (2026)



Tupelo- West (2026)



Tupelo-28-081-0005 (2026)

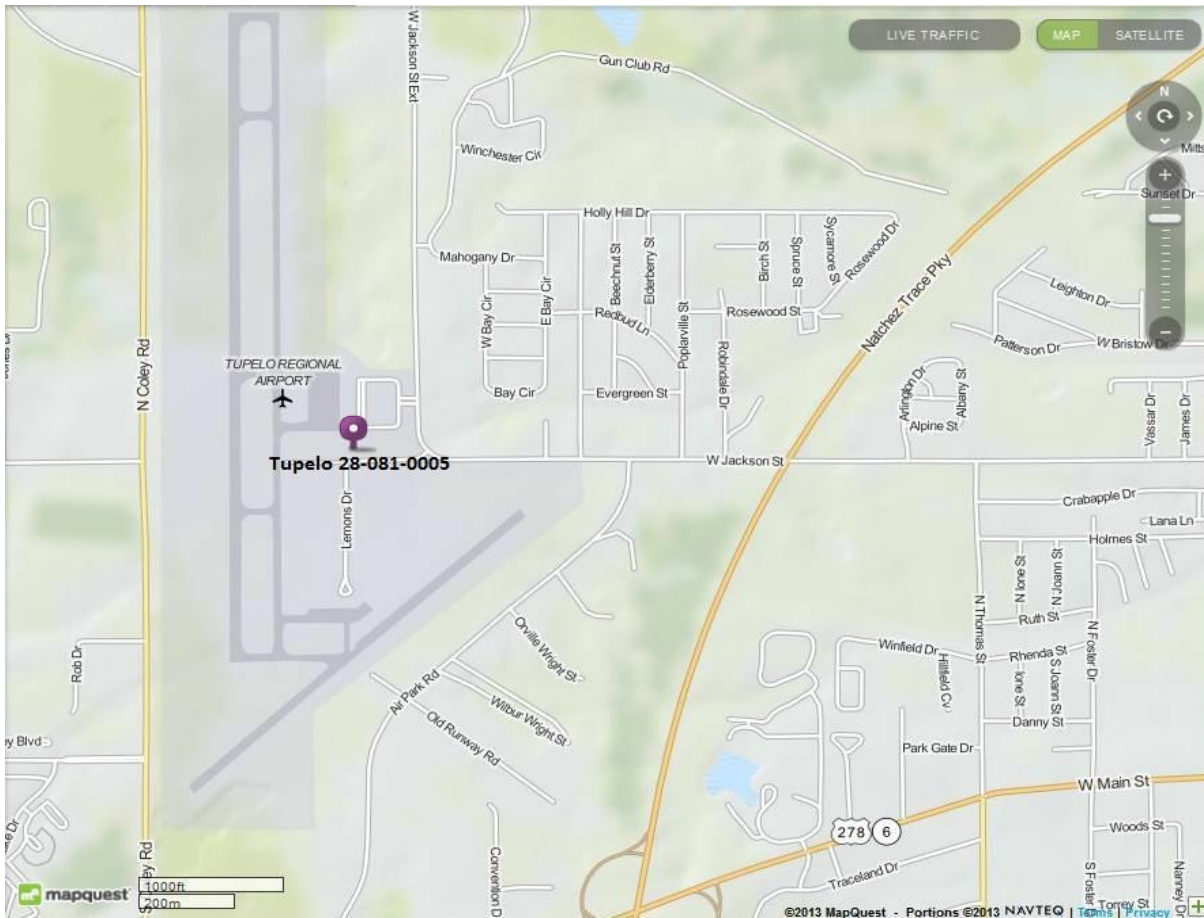
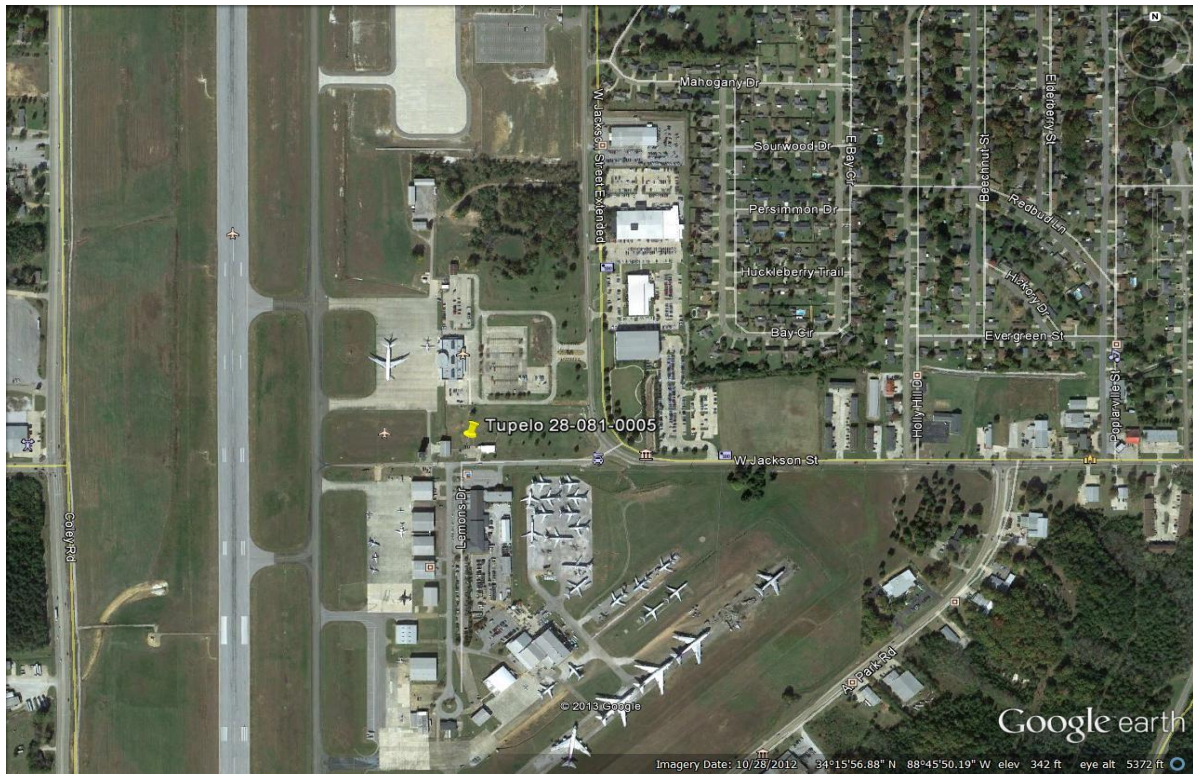


Figure 5 - Tupelo Pictures

**NCore**



NCore -North (2026)



NCore -South (2026)



NCore -East (2026)



NCore -West (2026)



NCore-28-049-0020 (2026)

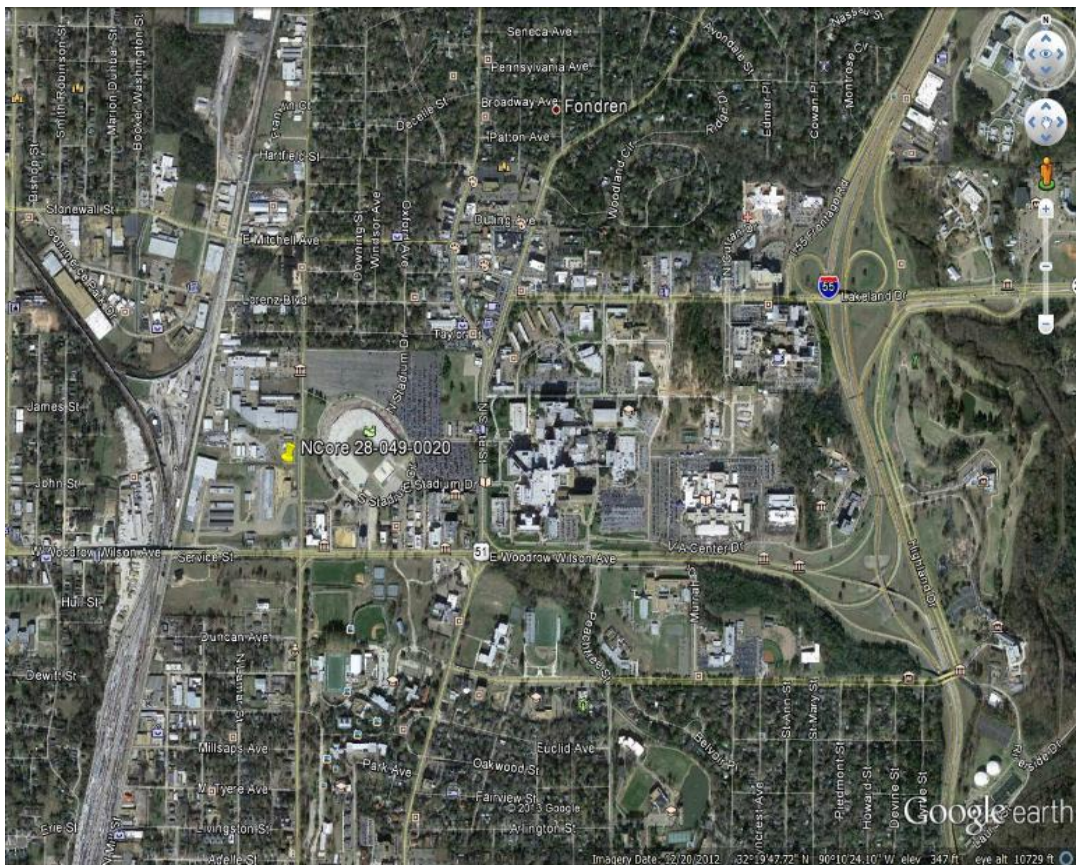
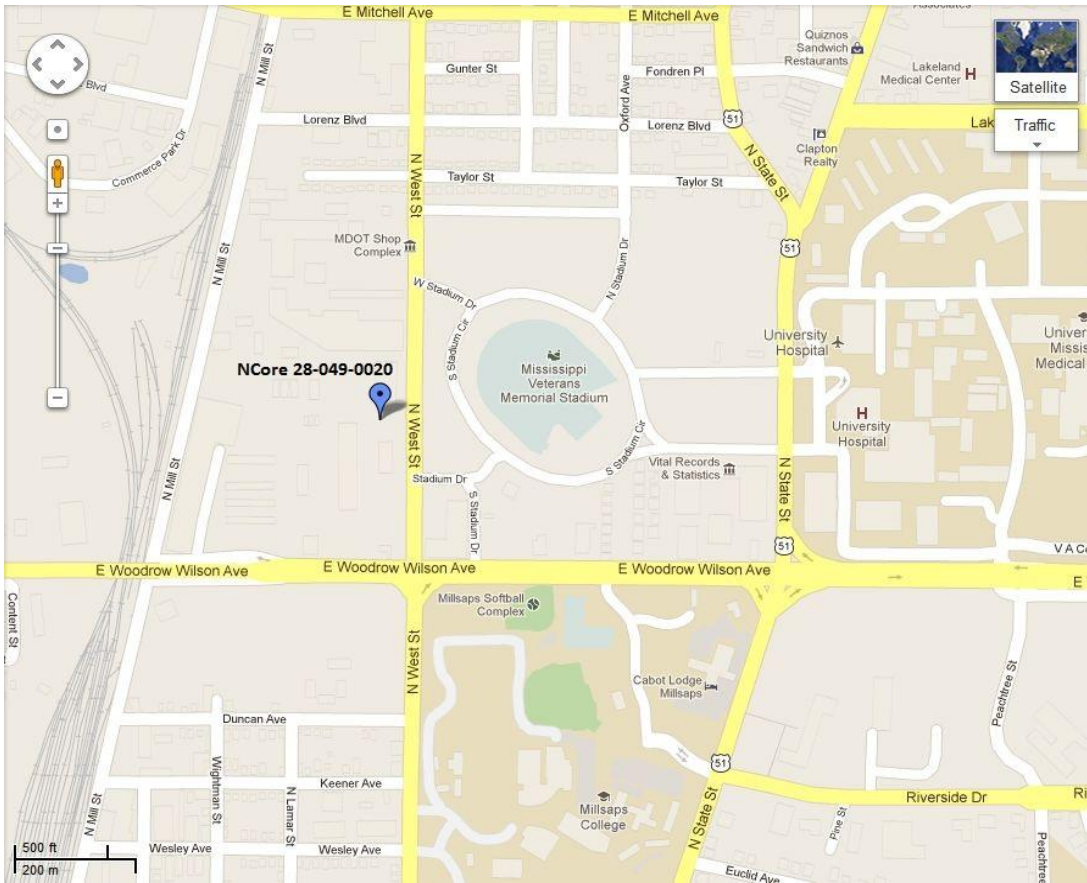


Figure 6 - NCore Pictures

## Hinds CC



Hinds CC -North (2026)



Hinds CC -South (2026)



Hinds CC -East (2026)



Hinds CC -West (2026)



Hinds-28-049-0021 (2026)

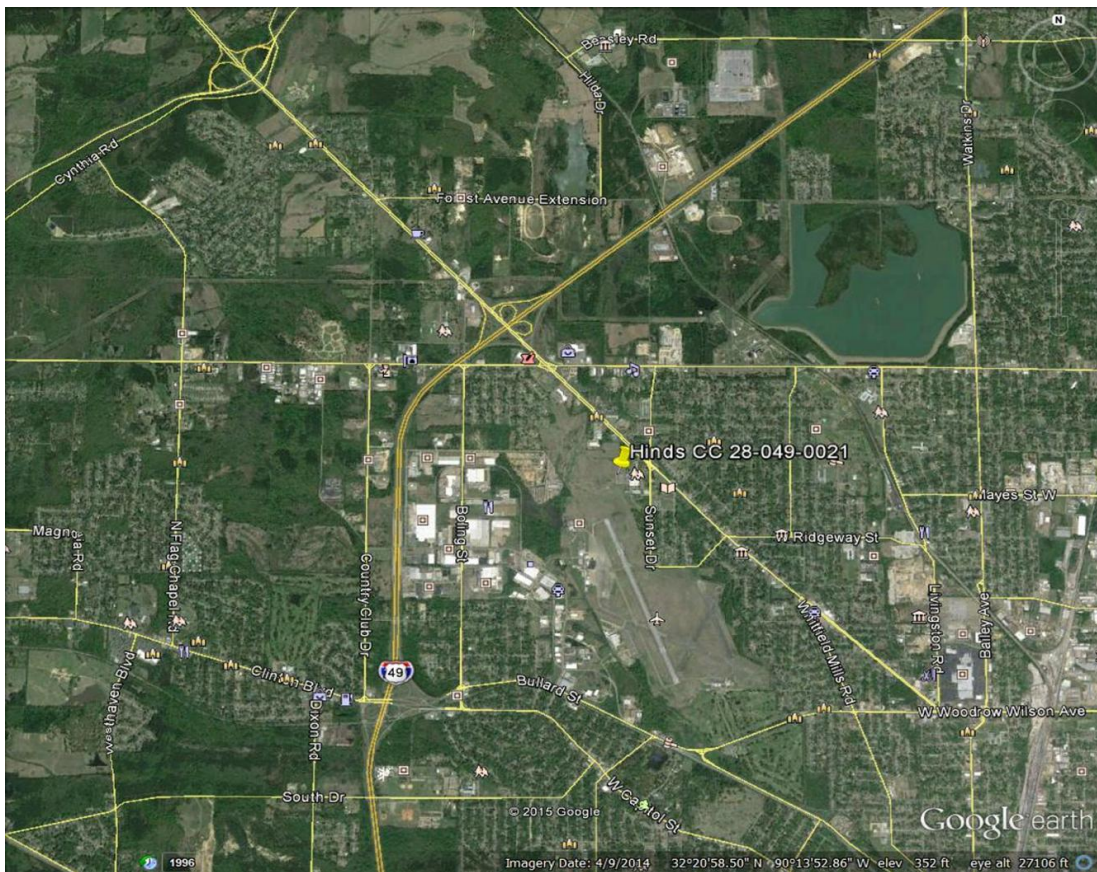
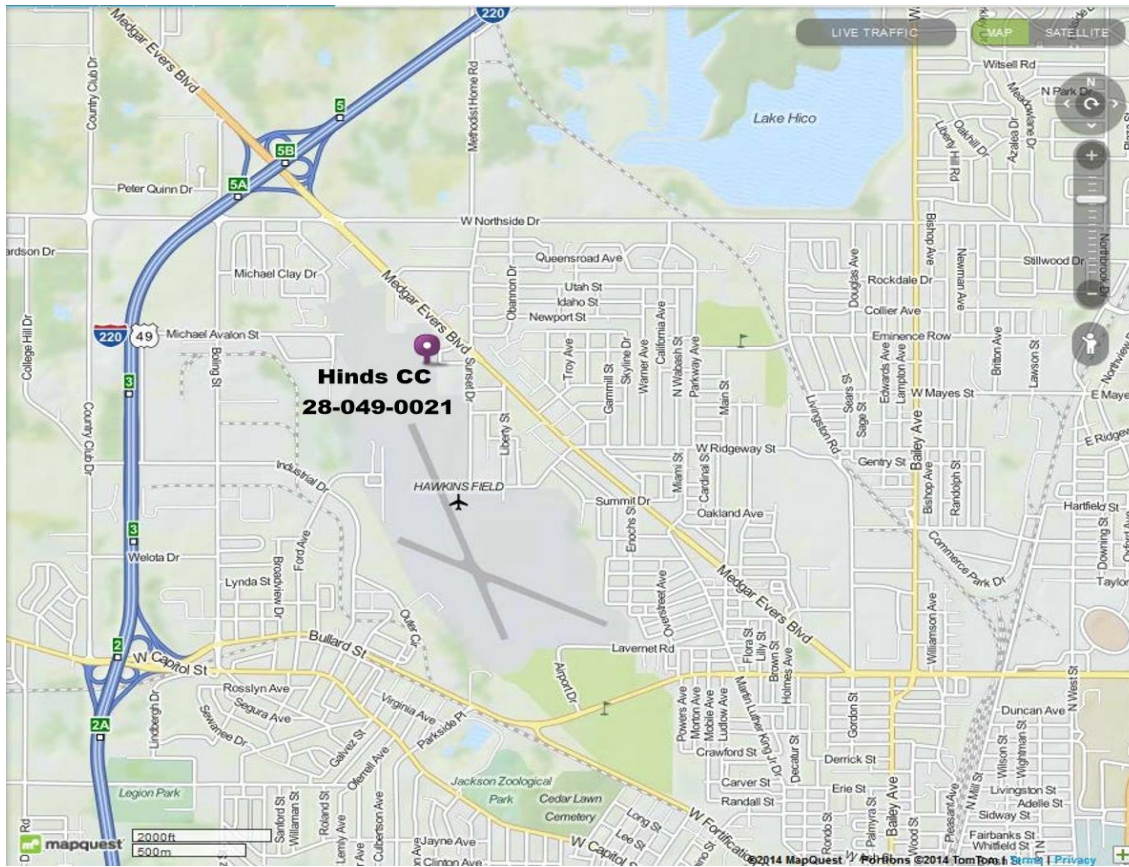


Figure 7 - Hinds CC Pictures

# GULFPORT



Gulfport-North (2026)



Gulfport-South (2026)



Gulfport-East (2026)



Gulfport-West (2026)



Gulfport-28-047-0008 (2026)



Figure 8 - Gulfport Pictures

**WAVELAND**



Waveland-North (2026)



Waveland-South (2026)



Waveland-East (2026)



Waveland-West (2026)



Waveland-28-045-0003 (2026)

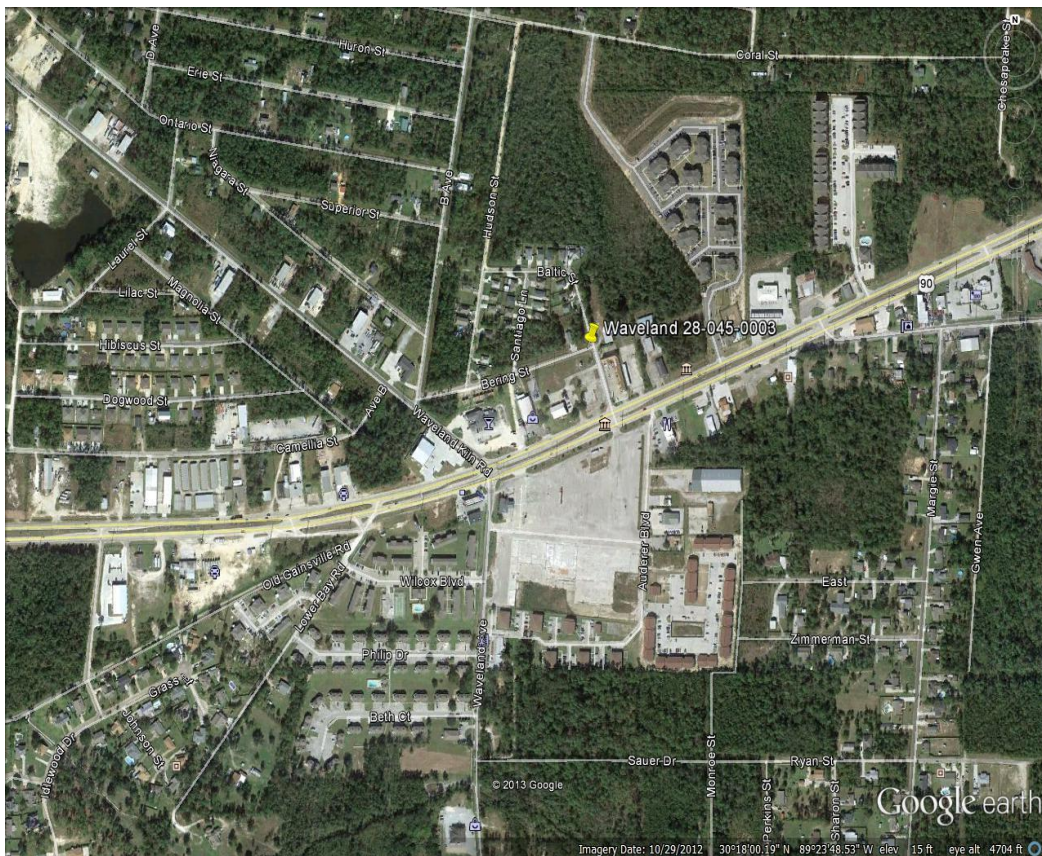
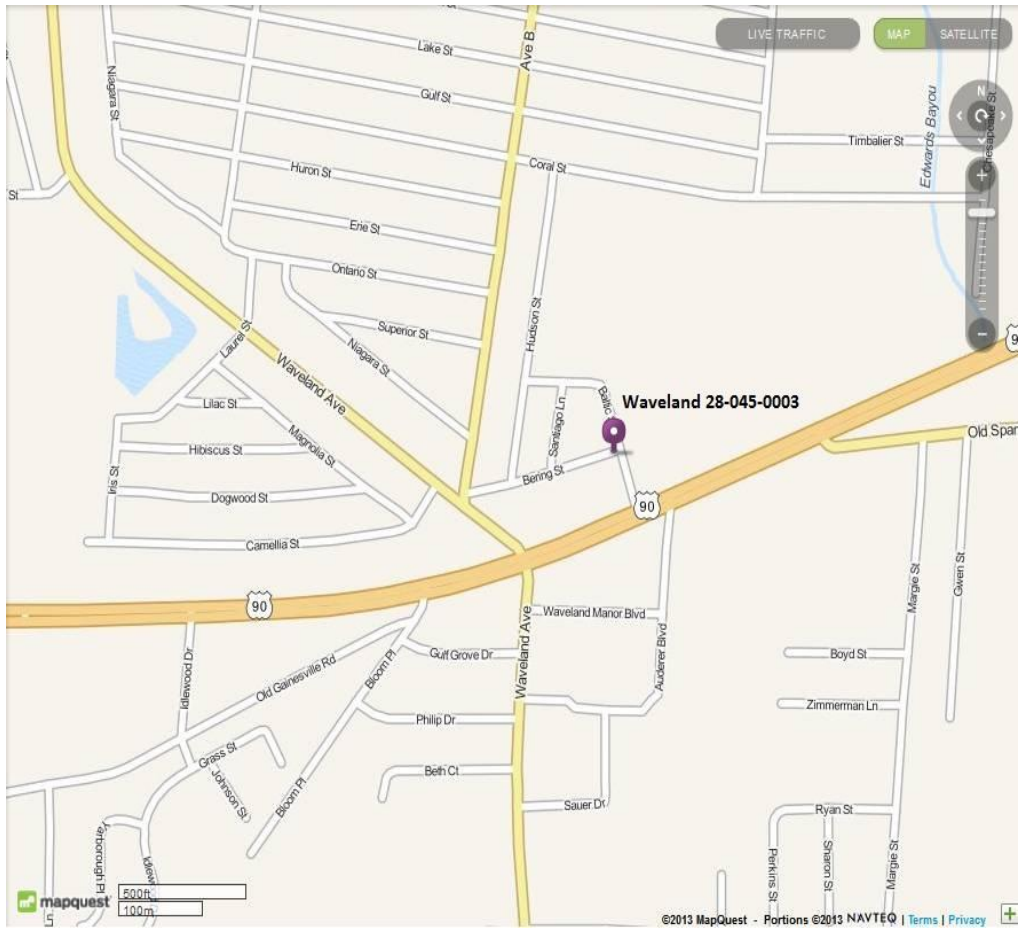


Figure 9 - Waveland Pictures

PASCAGOULA



Pascagoula-North (2026)



Pascagoula-South (2026)



Pascagoula-East (2026)



Pascagoula-West (2026)



Pascagoula-28-059-0006 (2026)

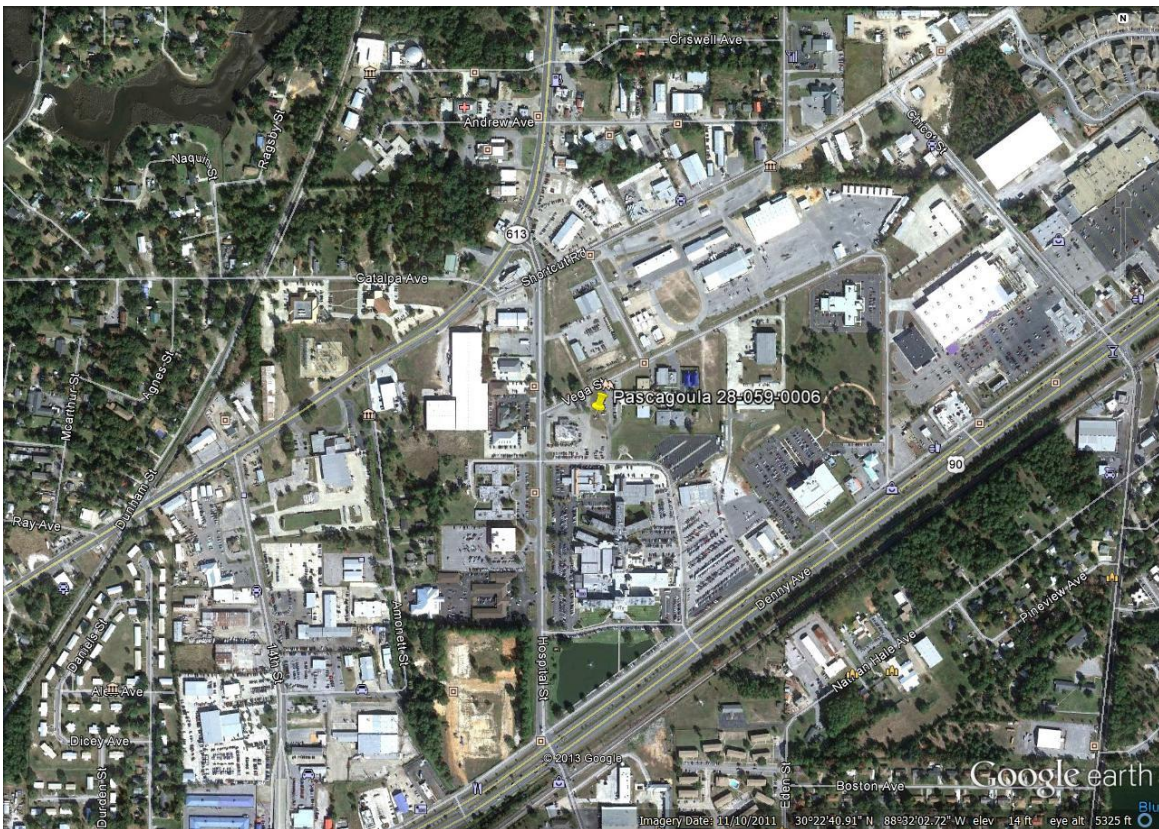
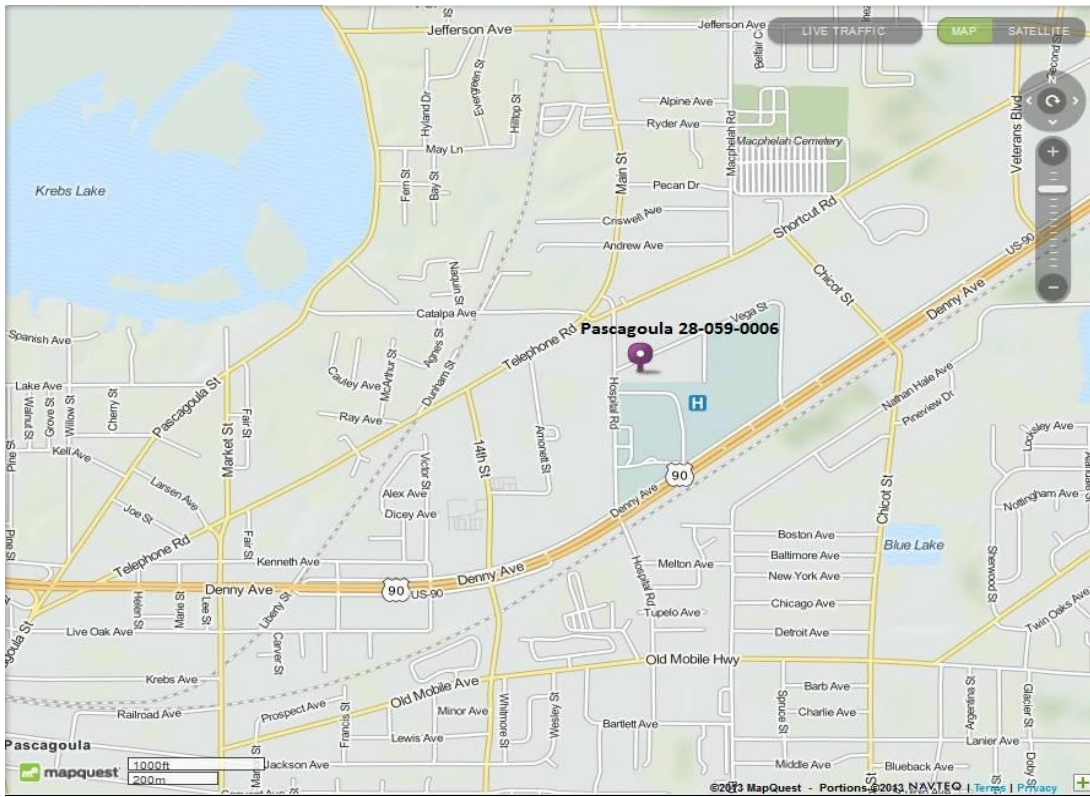


Figure 10 - Pascagoula Pictures

# HATTIESBURG



Hattiesburg-North (2026)



Hattiesburg-South (2026)



Hattiesburg-East (2026)



Hattiesburg-West (2026)



Hattiesburg-28-035-0004 (2026)

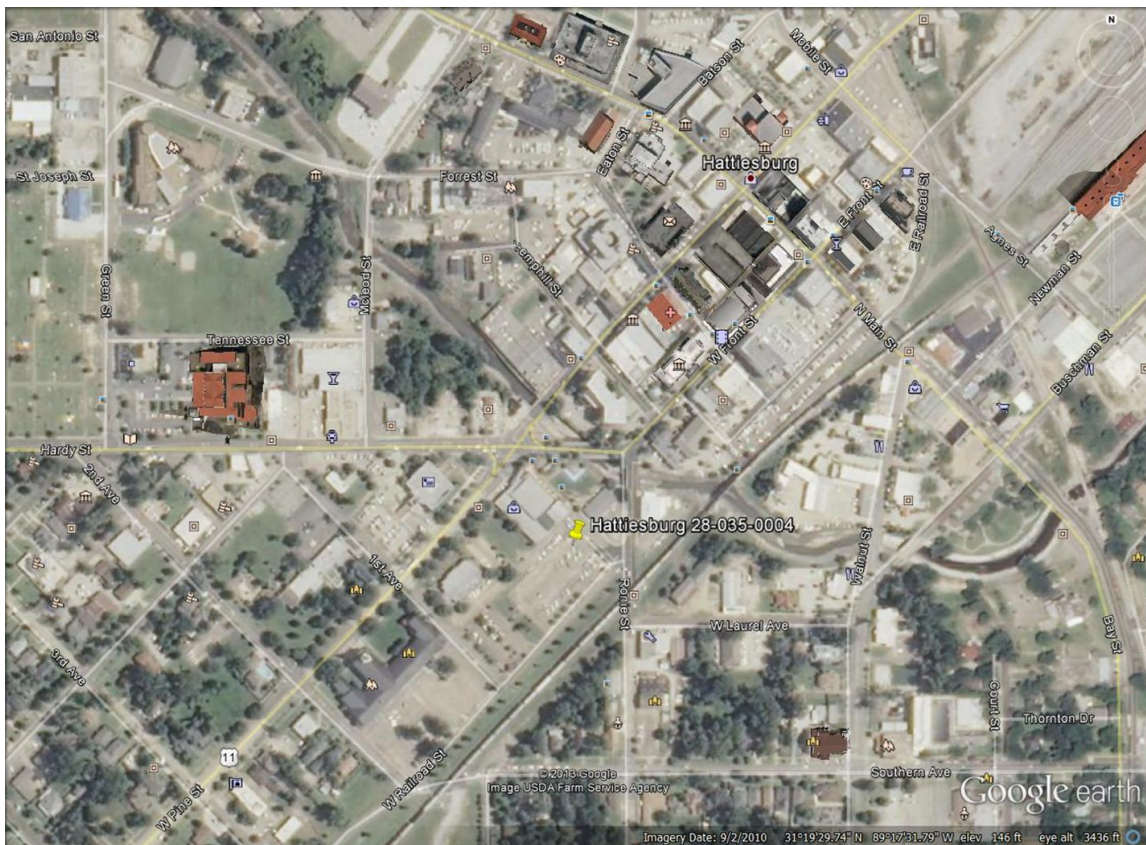
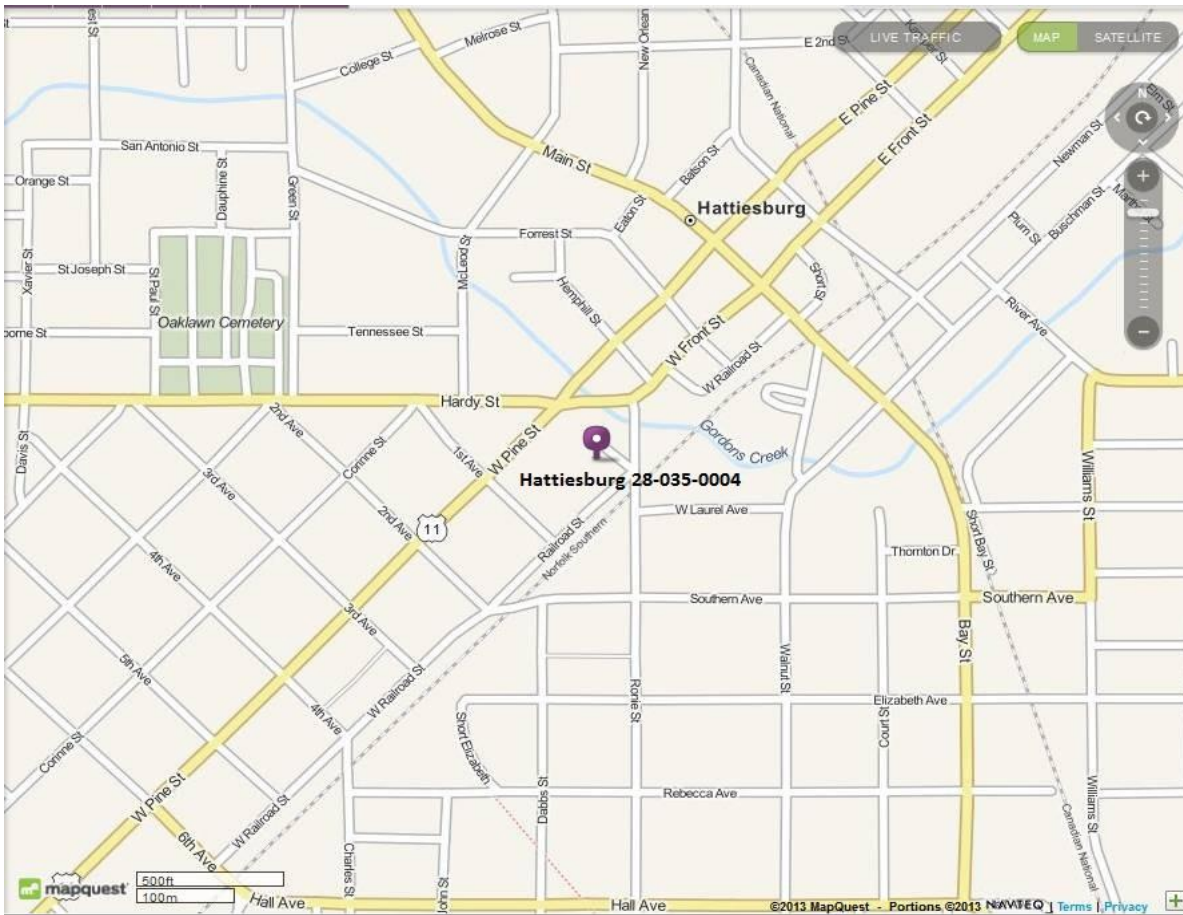


Figure 11 - Hattiesburg Pictures

**PASCAGOULA (CHEROKEE)**



Pascagoula Cherokee-North (2026)



Pascagoula Cherokee-South (2026)



Pascagoula Cherokee-East (2026)



Pascagoula Cherokee-West (2026)



Pascagoula Cherokee-28-059-0007 (2026)

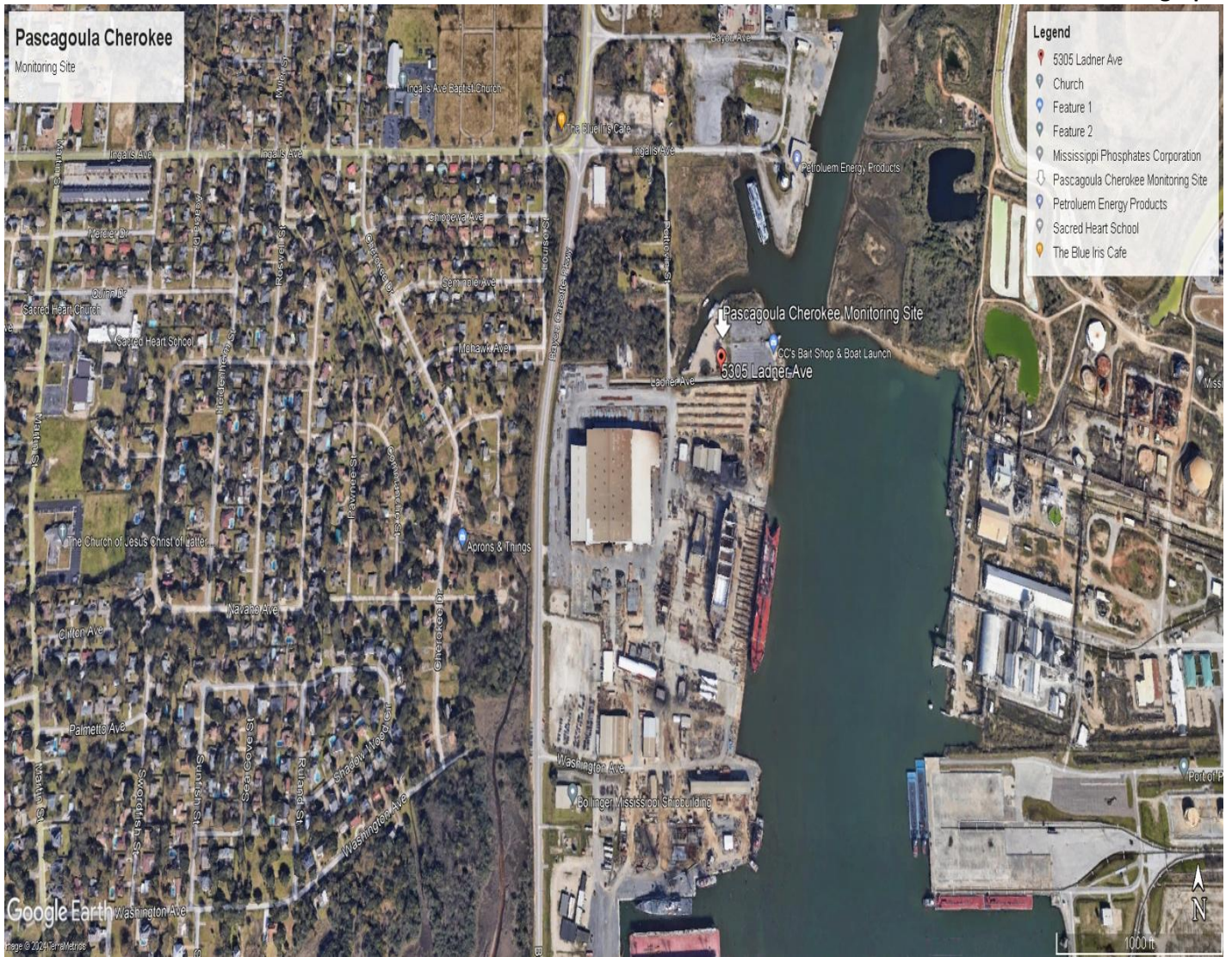


Figure 12 - Pascagoula (Cherokee) Pictures

## 10.0 Regional Monitoring Agreement



LEE HARRIS  
MAYOR

# SHELBY COUNTY HEALTH DEPARTMENT



Public Health  
Prevent. Promote. Protect.  
Shelby County Health Department

BRUCE RANDOLPH, MD, MPH  
INTERIM HEALTH DIRECTOR & HEALTH OFFICER

May 15, 2026

Ms. Michelle Walker Owenby, Air Director  
Tennessee Department of Environment and Conservation Air Pollution Control Division  
Davy Crockett Tower  
500 James Robertson Parkway, 7th Floor  
Nashville, Tennessee 37243

Mr. Jaricus Whitlock, P.E., Chief, Air Division  
Mississippi Department of Environmental Quality  
Office of Pollution Control  
P.O. Box 2261  
Jackson, Mississippi 39225

Demetria Kimbrough, Deputy Director, Office of Air Quality  
Division of Environmental Quality  
Arkansas Department of Energy and Environment  
5301 Northshore Drive  
North Little Rock, Arkansas 72118-5317

Dear All,

In accordance with the provisions of the Memorandum of Agreement (MOA) signed in May and June of 2008 between the Shelby County Health Department (SCHD), Mississippi Department of Environmental Quality (MDEQ), and the Arkansas Department of Energy and Environment-Division of Environmental Quality (DEQ), this letter serves as a notification that each respective agency in the MOA have been contacted by the SCHD.

Pending final EPA approval, the SCHD plans to begin operation of a sixth air monitoring site in southwest Memphis (Riverview). The Riverview site is planned to contain a carbon monoxide monitor as well as an ozone monitor. Our goal is to have the site operational and online collecting data (for submittal to AQS) starting Quarter 3 (July 1<sup>st</sup>). We also plan to complete changes later in the year at the Alabama Ave. and Near Road sites within the SCHD air monitoring network (see monitoring charts). After consulting with MDEQ and DEQ, we learned that there will be no other changes at this time. With this MOA, all agencies are meeting EPA monitoring requirements.

### Mission

*To promote, protect and improve the health of ALL in Shelby County.*


---

814 Jefferson Avenue ♦ Memphis, TN 38105 ♦ 901 222-9000 ♦ [www.shelbytnhealth.com](http://www.shelbytnhealth.com)

Page 2

If you have any questions, please call me at (901) 222-9193.

Sincerely,



Kasia Smith Alexander

Deputy Director, Shelby County Health Department

Mission

*To promote, protect and improve the health and environment of all Shelby County residents.*

---

814 Jefferson Avenue ♦ Memphis, TN 38105 ♦ 901 222-9000 ♦ [www.shelbytnhealth.com](http://www.shelbytnhealth.com)

**MEMORANDUM OF AGREEMENT  
ON AIR QUALITY MONITORING FOR CRITERIA  
POLLUTANTS FOR  
THE MEMPHIS, TN- MS- AR  
METROPOLITAN STATISTICAL AREA (MSA)**

Participating Agencies:

Shelby County Health Department (SCHD)  
Air Pollution Control Program

Mississippi Department of Environmental Quality (MDEQ)  
Office of Pollution Control, Air Division

Arkansas Department of Energy and Environment  
Division of Environmental Quality (DEQ)

**PURPOSE / OBJECTIVE / GOALS**

The purpose of this Memorandum of Agreement (MOA) is to inform the entities of the Memphis, Tennessee-Mississippi-Arkansas Metropolitan Statistical Area of monitoring network changes. The MOA between SCHD, MDEQ, and DEQ is to collectively meet United States Environmental Protection Agency (EPA) minimum monitoring requirements for particles of an aerodynamic diameter of 10 micrometers and less ( $PM_{2.5}$ ), and ozone; as well as other criteria pollutants air quality monitoring deemed necessary to meet the needs of the MSA as determined reasonable by all parties. This MOA will formalize and reaffirm the collective agreement in order to provide adequate criteria pollutant monitoring for the Memphis, TN-MS-AR MSA as required by 40 CFR 58 Appendix D, Section 2, (e).

PM<sub>2.5</sub> MSA monitoring network include:

<u>County</u>	<u>Federal Reference Method PM<sub>2.5</sub></u>	<u>Federal Equivalent Method PM<sub>2.5</sub></u>	<u>Continuous PM<sub>2.5</sub></u>	<u>Speciation PM<sub>2.5</sub></u>	<u>Collocated PM<sub>2.5</sub></u>
Shelby County, TN <b>SCHD</b>	4 (Currently includes 2 at Alabama Ave, 1 at Shelby Farms-NCORE, & 1 at Near Rd*)	3* (Currently 1 in field)		2 (Chemical Speciation and Carbon Speciation-both at Shelby Farms-NCORE)	2 (will expand to 3 after all T640x instruments are installed)
Crittenden County, AR <b>DEQ</b>	1		1 (NAAQS excluded-AQI info only)		
DeSoto County, MS <b>MDEQ</b>		1			

\*With EPA permission, the SCHD is planning to install two T640x monitors (Alabama Ave. replaces the PM2.5 2025-POC 2 sampler-1:12 while keeping the PM2.5 FRM 2025i-1:3 sampler. Addition of T640x to Macon Cv-Near Rd allowing for collocation with PM2.5 FRM 2025i 1:3 sampler) later this year.

Criteria Air Pollutant MSA monitoring network include:

<u>County</u>	<u>PM<sub>10</sub></u>	<u>PM<sub>2.5-10</sub></u>	<u>O<sub>3</sub></u>	<u>NO/NO<sub>2</sub>/NO<sub>x</sub>/NO<sub>y</sub></u>	<u>CO</u>	<u>SO<sub>2</sub></u>
Shelby County, TN <b>SCHD</b>	4 (Currently 2 in field-1 at Alabama Ave. & 1 at Shelby Farms-NCORE)*	3* (Currently 1 in field)	4** (3 currently in field)	3 (NO/NO <sub>2</sub> /NO <sub>x</sub> at Macon-Near Rd, NO/NO <sub>y</sub> (trace) at Shelby Farms-NCORE, True NO <sub>2</sub> (trace) at Shelby Farms-PAMS)	3** (2 currently in field)	1 (trace at Shelby Farms-NCORE)
Crittenden County, AR <b>DEQ</b>			1	1		
DeSoto County, MS <b>MDEQ</b>			1			

\* With EPA permission, the SCHD is planning to install two T640x monitors (Alabama Ave. replaces the TEOM PM10 continuous monitor. Addition of T640x monitor includes PM10 & PM2.5-10).

\*\* Pending EPA final approval, SCHD will begin operating Riverview site with CO & O3 monitors.

### **RESPONSIBILITIES / ACTIONS**

Each of the parties to this Agreement is responsible for ensuring that its obligations under the MOA are met. As conditions warrant, the affected agencies may conduct telephone conference calls, meetings, or other communications to discuss monitoring activities for the MSA. Each affected agency shall inform the other affected agencies via telephone or email of any monitoring changes occurring within its jurisdiction of the MSA at its earliest convenience, after learning of the need for the change or making the changes. Such unforeseen changes may include evictions from monitoring sites, destruction of monitoring sites due to natural disasters, or any occurrences that result in an extended (greater than one quarter) or permanent change in the monitoring network.

### **LIMITATIONS**

- All commitments made in this MOA are subject to the availability of appropriated funds and each agency's budget priorities. Nothing in this MOA obligates SCHD, MDEQ, or DEQ to expend appropriations or to enter into any contract, assistance agreement, interagency agreement or other financial obligation.
- This MOA is neither a fiscal nor a funds obligation document. Any endeavor involving reimbursement or contribution of funds between parties to this agreement will be handled in accordance with applicable laws, regulations, and procedures, and will be subject to separate agreements that will be affected in writing by representatives of the parties.
- This MOA does not create any right or benefit enforceable by law or equity against SCHD, MDEQ, or DEQ, their officers or employees, or any other person. This MOA does not apply to any entity outside SCHD, MDEQ, or DEQ.
- No proprietary information or intellectual property is anticipated to arise out of this MOA.

### **TERMINATION**

This Memorandum of Agreement may be revised upon the mutual consent of SCHD, MDEQ and DEQ. Each party reserves the right to terminate this MOA. A thirty (30) day written notice must be given prior to the date of termination.

## 11.0 Appendix: A

### APPENDIX A:

2026 Siting Criteria and Residence Time Summary										
AQS #	Site Name:	Parameter	Probe Tubing and Fittings	Probe Rain Shield Material	Height of Probe from ground to Inlet (meters)	Residence Time Seconds	Nearest Road/ Meters	Obstructions < 10 Meters	Tree Drip Line < 10 Meters	270 Degrees Unrestricted Airflow (yes/no)
28-011-0002	Cleveland	Ozone	Teflon	Stainless	4.5 m	4.26s	Shumate Circle / 63.2 m	No	No	Yes
28-011-0002	Cleveland	PM	N/A	N/A	4.2 m	N/A	Shumate Circle / 62.2 m	No	No	Yes
28-033-0002	Hernando	Ozone	Teflon	Stainless	4.5 m	4.07 s	Vaiden Dr / 72.5 m	No	No	Yes
28-033-0002	Hernando	PM	N/A	N/A	4.2 m	N/A	Vaiden Dr / 71.5 m	No	No	Yes
28-045-0003	Waveland	Ozone	Teflon	Stainless	5.0 m	4.23 s	Bering St / 16.92 m	No	No	Yes
28-045-0003	Waveland	PM	N/A	N/A	4.75 m	N/A	Bering St / 16.14	No	No	Yes
28-047-0008	Gulfport YC	Ozone	Teflon	Stainless	4.20 m	4.36 s	Hancock AVE / 45 m	No	No	Yes
28-047-0008	Gulfport YC	PM	N/A	N/A	4.05 m	N/A	Hancock AVE / 45 m	No	No	Yes
28-049-0021	Hinds CC	Ozone	Teflon	Stainless	4.5 m	4.40 s	Medgar Evers Dr / > 300 m	No	No	Yes
28-049-0021	Hinds CC	PM	N/A	N/A	4.0 m	N/A	Medgar Evers Dr / > 300 m	No	No	Yes
28-035-0004	Hattiesburg	PM	N/A	N/A	3.5 m	N/A	W.Railroad Street 54.95 m	No	No	Yes
28-081-0005	Tupelo	Ozone	Teflon	Stainless	4.35 m	3.73 s	Lemons Dr / 14.63 m	No	No	Yes
28-049-0020	NCore	Ozone	Teflon	Stainless	4.5 m	5.03 s	N. West St./ 42 m	No	No	Yes
28-049-0020	NCore	SO2	Teflon	Stainless	4.5 m	5.96 s	N. West St./ 42 m	No	No	Yes
28-049-0020	NCore	CO	Teflon	Stainless	4.5 m	2.74 s	N. West St./ 42 m	No	No	Yes
28-049-0020	NCore	PM	N/A	N/A	4.0 m	N/A	N. West St./ 42 m	No	No	Yes
28-059-0006	Pascagoula	Ozone	Teflon	Stainless	4.57 m	3.85 s	LT Eugene J Majure Dr./ 41.88 m	No	No	Yes
28-059-0006	Pascagoula	SO2	Teflon	Stainless	4.57 m	5.49 s	LT Eugene J Majure Dr./ 41.88 m	No	No	Yes
28-059-0006	Pascagoula	NOx	Teflon	Stainless	4.57 m	7.37 s	LT Eugene J Majure Dr./ 41.88 m	No	No	Yes
28-059-0006	Pascagoula	PM	N/A	N/A	4.42 m	N/A	LT Eugene J Majure Dr./ 41.88 m	No	No	Yes
28-059-0007	Pascagoula	*TRS	Teflon	Stainless	4.55m	Not Operating	Poitevin St/ 383.89 m	No	No	Yes
28-059-0007	Pascagoula	PM10	N/A	N/A	4.25 m	N/A	Poitevin St/ 383.89 m	No	No	Yes

Table 9 – Appendix A: Sitting Criteria and Residence Time Summary

## 12.0 Appendix: B

### QAPP, QMP and SOP Approval/Accepted/Reviewed Date

Pollutant/Activity	QAPP, QMP and SOP Title	Revision #	Approved Date	Reviewed Date
Quality Objectives	Quality Assurance Project Plan (QAPP)	2.0	11/17/2025	2/9/2026
Project Policy	Quality Management Plan (QMP)	2.0	12/23/2025	2/17/2026
Ozone	Teledyne/Advanced Pollution Instruments (API) models 400e and T400 ozone analyzers	2.0	4/6/2023	2/19/2026
SO <sub>2</sub>	Teledyne/Advanced Pollution Instruments (API) models 100EU and T100U	2.0	4/6/2023	2/23/2026
CO	Teledyne/Advanced Pollution Instruments (API) models API T300U	2.0	4/6/2023	2/23/2026
NO <sub>2</sub>	Teledyne/Advanced Pollution Instruments (API) models API T200	2.0	4/6/2023	3/3/2026
NO <sub>y</sub>	Teledyne/Advanced Pollution Instruments (API) models API T200U	2.0	4/6/2023	3/3/2026
FRM PM <sub>2.5</sub>	Thermo Model 2025 Instrument Thermo Model 2025i Instrument	2.0 1.0	11/28/2022 5/16/2025	3/5/2026 3/5/2026
T640 and T640X PM <sub>2.5</sub> , PM <sub>10</sub> , PM <sub>10-2.5</sub>	Teledyne/Advanced Pollution Instruments (API) Model T640 and T640x	1.0	11/28/2022	3/9/2026
Carbon	URG-3000n Sequential Particulate Speciation System	2.0	Adopted, National SOP 8/11/2011	3/9/2026
Speciation	Standard Operating Procedure for the MetOne Super SASS	2.0	Adopted, National SOP 7/27/2011	3/23/2026
Data Handling and Data Validation	Data Handling and Data Validation	2.0	2/27/2026	2/27/2026
API Calibrators- API 700, API T700, API T700U and API T703U	Teledyne API Model 700 Series Calibrators	3.0	9/11/2025	4/6/2026
PM <sub>2.5</sub> Lab	IML PM <sub>2.5</sub> Gravimetric Laboratory	15	5/17/21	4/28/2026

Table 10 - Appendix B: QAPP, QMP, and SOP Approval/Accepted/Reviewed Date

## 13.0 Appendix: C



REGION 4  
ATLANTA, GA 30303

February 25, 2026

Jaricus Whitlock  
Chief  
Air Division Air Quality Management Branch Manager  
Mississippi Department of Environmental Quality  
515 East Amite Street  
Jackson, Mississippi 39201

Dear Mr. Whitlock:

On October 21, 2025, the Mississippi Department of Environmental Quality (MDEQ) submitted a "Shutdown Justification Analysis" to the U.S. Environmental Protection Agency as an addendum (Addendum) to the Mississippi's 2025 Annual Ambient Air Monitoring Network Plan (Network Plan). The Addendum proposed the discontinuation of the Meridian ozone (O<sub>3</sub>) monitoring site (AQS Site ID: 28-075-0003), located in Meridian, Lauderdale County, Mississippi.

The air monitoring regulations in 40 CFR §58.10(a)(1) require that a Network Plan Addendum be made available for public inspection and comment for at least 30 days before submission to the EPA for approval. The Addendum was made available for public comment on the MDEQ website from December 10, 2025, to January 12, 2026, and one comment was received during the public notice period. The comment, which supported the shutdown and the reallocation of resources, was received from a citizen and addressed by the MDEQ in the final submittal.

For the proposed site discontinuation, the MDEQ provided the information required by 40 CFR §58.14(c), including evidence that the O<sub>3</sub> monitor in Ward, Alabama (AQS ID: 01-119-0003) provides continued spatial coverage to prevent an O<sub>3</sub> data gap. In the EPA's assessment, the discontinuation of the Meridian site does not compromise data collection needed for implementation of the O<sub>3</sub> national ambient air quality standard (NAAQS), because the Meridian site has historically measured similar concentrations to the nearby monitor in Ward, AL. The Ward site is operated by the Alabama Department of Environmental Management, and there is no plan for its closure.

Although the Meridian O<sub>3</sub> monitor does not meet the specific conditions for discontinuation listed in 40 CFR §58.14(c)(1)-(6) due to a probability of greater than 10 percent of exceeding 80 percent of the NAAQS in the next three years, the site has shown attainment of the O<sub>3</sub> NAAQS in the previous five years and has not historically measured the highest O<sub>3</sub> concentrations in Mississippi. Under 40 CFR §58.14(c), "[o]ther requests for discontinuation may also be approved on a case-by-case basis if

discontinuance does not compromise data collection needed for implementation of a NAAQS and if the requirements of Appendix D to this part, if any, continue to be met.” Because there are no minimum monitoring requirements in Lauderdale County, the proposed O<sub>3</sub> monitoring network will continue to meet the requirements in 40 CFR Part 58, Appendix D after this discontinuation.

Accordingly, the EPA approves discontinuation of the Meridian O<sub>3</sub> monitoring site because the data collection needed for NAAQS implementation remains sufficient, the network continues to meet 40 CFR §58, Appendix D, and the modifications will assist the MDEQ in directing resources to other aspects of the monitoring network.

Lastly, the EPA recognizes MDEQ’s resource and staffing constraints and appreciates its ongoing reprioritization of their monitoring resources. In the next 5-year network assessment due July 1, 2030, the EPA recommends that the MDEQ evaluate the need for air monitoring in this area in the event of expected population growth and increase in emissions in or near Lauderdale County.

Thank you for working with the EPA Region 4 to monitor air pollution and promote healthy air quality in Mississippi and the nation. If you have any questions or concerns, please contact Katy Lusky at (404) 562-9130 or Rashidra Walker at (404) 562-8125.

Sincerely,

DENISSE  
DIAZ

Digitally signed by  
DENISSE DIAZ  
Date: 2025.02.25  
19:00:24 -05'00'

Denisse D. Diaz  
Director  
Air and Radiation Division