

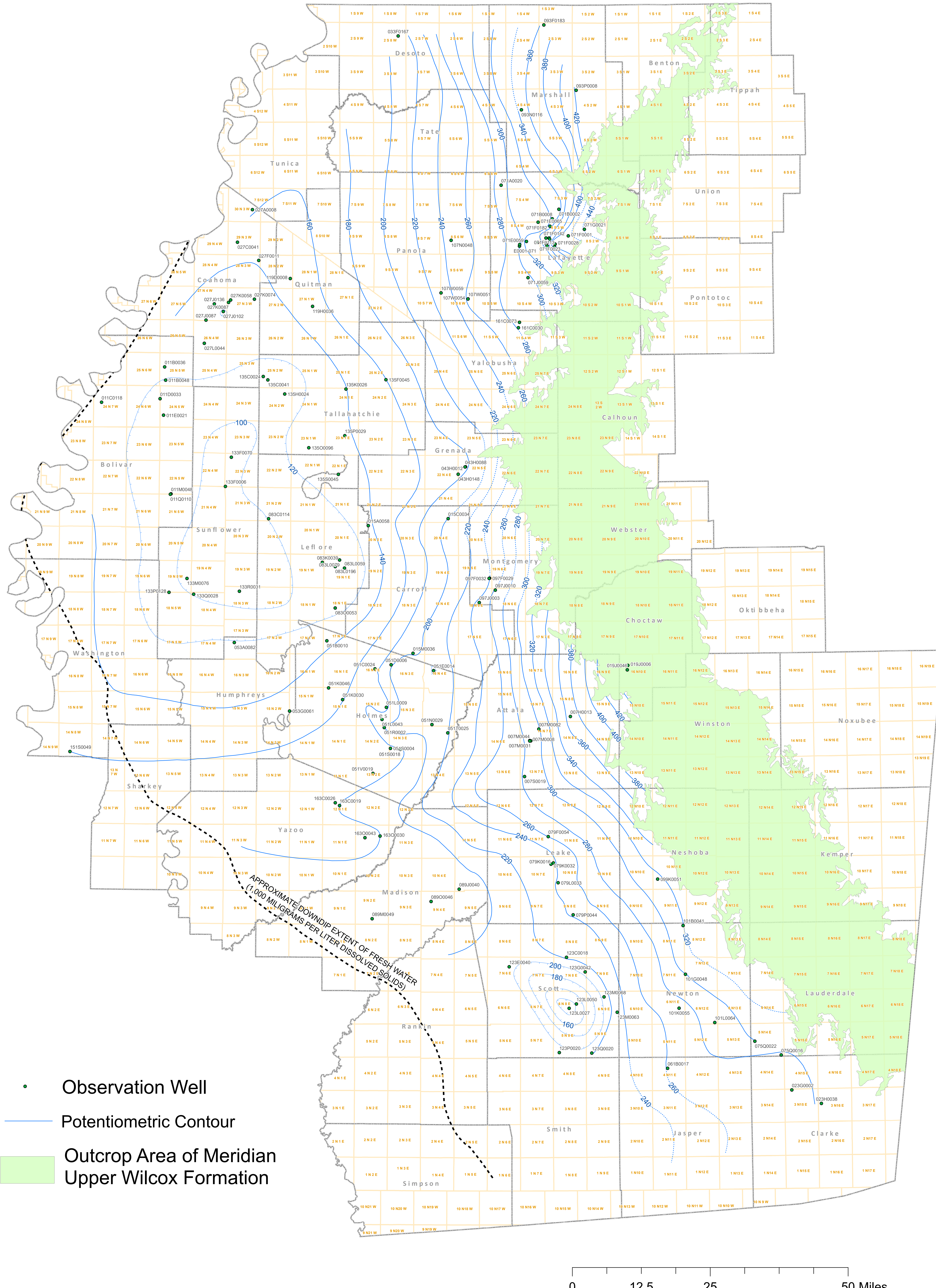
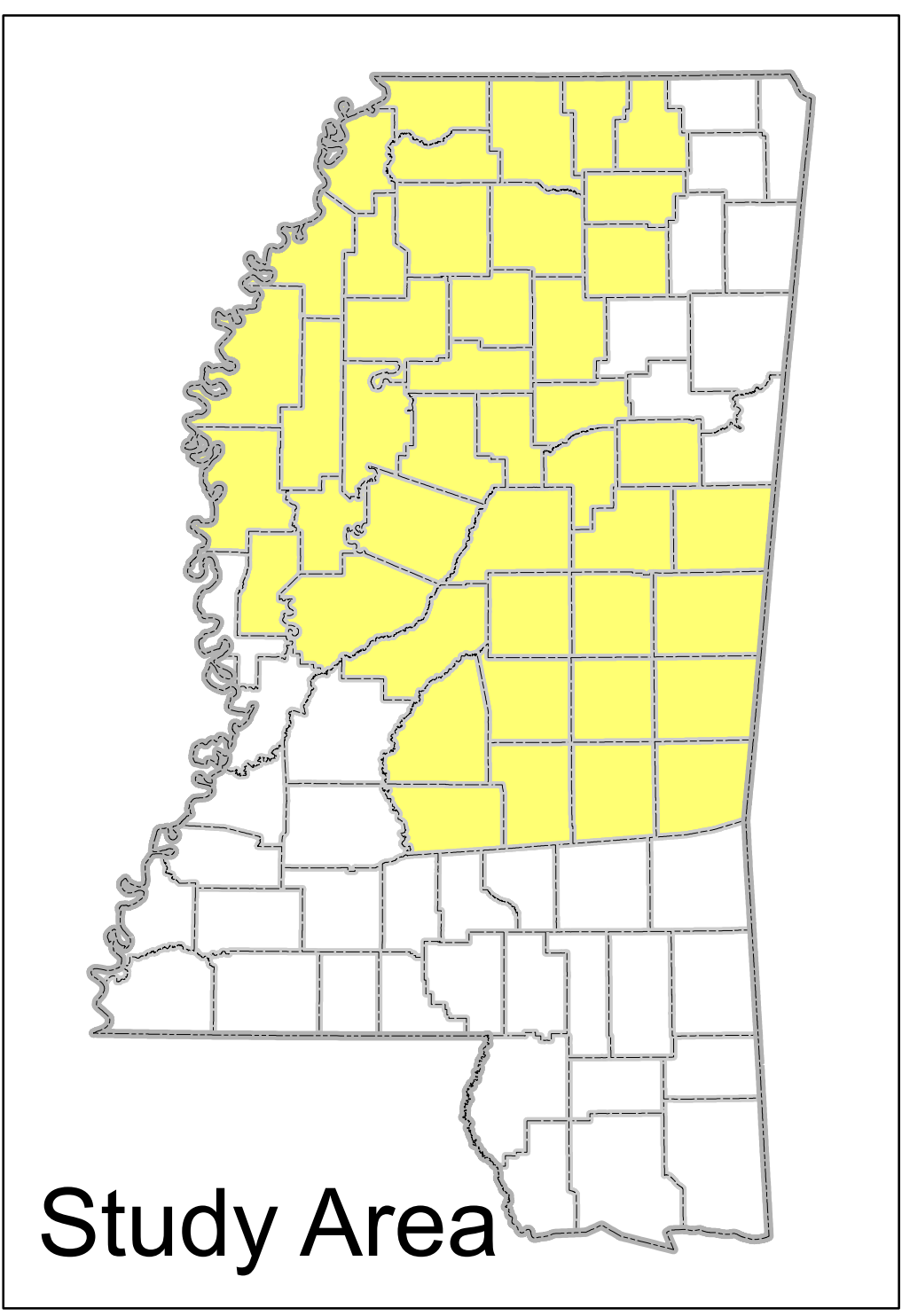
Potentiometric Map Meridian Upper Wilcox Aquifer

Contour Interval: 20 Feet
Datum is Sea Level

Madison Kymes, RPG
&
Austin Brister, GIT
2020



Madison Kymes



County	Well Number	Head Value in Feet Relative to MSL	Owner	Date Measured
ATTALA	007H0013	369.2	ETHEL, TOWN OF	10-Jul-19
ATTALA	007M0008	278.79	BARNETT MOVING AND STORAGE	18-Jul-19
ATTALA	007M0031	286.35	KOSCIUSKO LIGHT AND WATER PLANT	18-Jul-19
ATTALA	007M0044	280.5	KOSCIUSKO LIGHT AND WATER PLANT	18-Jul-19
ATTALA	007M0082	299.2	KOSCIUSKO LIGHT AND WATER PLANT	18-Jul-19
ATTALA	007S0019	281.85	US GOVERNMENT, NATCHEZ TRACE PARKWAY	18-Jul-19
BOLIVAR	011B0036	122.4	BROOKS ELEMENTARY SCHOOL	18-Jun-19
BOLIVAR	011B0048	119.8	BURROUSHS FARMS	22-May-19
BOLIVAR	011C0118	131.55	GUNNISON, TOWN OF	22-May-19
BOLIVAR	011D0033	116.9	SHELBY, CITY OF	22-May-19
BOLIVAR	011E0021	117.5	WINSTONVILLE, TOWN OF	22-May-19
BOLIVAR	011M0048	103.4	BOYLE, TOWN OF	18-Jun-19
BOLIVAR	011Q0110	110.4	BOYLE, TOWN OF	29-May-19
CARROLL	015A0058	135.48	NEAL, E H	18-Jul-19
CARROLL	015C0034	202.5	POOR HOUSE WATER ASSOCIATION INC	9-Jul-19
CARROLL	015M0036	199.47	PELUCIA RURAL WATER ASSOCIATION INC	18-Jul-19
CHOCTAW	019H0006	462.2	WEIR, TOWN OF	19-Jun-19
CHOCTAW	019H0045	462.8	PANHANDLE WATER ASSOCIATION INC	19-Jun-19
CLARKE	023G0002	260.5	STONEMALL, TOWN OF	5-Sep-19
CLARKE	023H0038	288.2	CLARKCO STATE PARK	5-Sep-19
COAHOMA	027A0008	163.6	LULA, TOWN OF	14-May-19
COAHOMA	027C0041	146.8	COAHOMA, TOWN OF	14-May-19
COAHOMA	027F0011	141.5	JONESTOWN, TOWN OF	14-May-19
COAHOMA	027H0087	126	V F W	14-May-19
COAHOMA	027J0102	118	CLARKSDALE, CITY OF	18-Jun-19
COAHOMA	027J0136	127.4	CLARKSDALE, CITY OF	18-Jun-19
COAHOMA	027K0058	132.4	CLARKSDALE, CITY OF	18-Jun-19
COAHOMA	027L0074	128.6	MOORE BAYOU WATER ASSOCIATION INC	18-Jun-19
COAHOMA	027M0087	129.2	CLARKSDALE, CITY OF	18-Jun-19
COAHOMA	027N0044	131.7	PINE GROVE COMMUNITY WATER ASSOCIATION	16-May-19
DESOTO	033F0167	205.7	MEMPHIS STONE AND GRAVEL COMPANY	13-Feb-19
GRENADA	043H0012	173.6	GRENADA, CITY OF	29-May-19
GRENADA	043H0088	167.1	GRENADA, CITY OF	29-May-19
GRENADA	043H0148	177.3	GRENADA, CITY OF	29-May-19
HOLMES	051B0010	136.63	CRUGER, TOWN OF	25-Jul-19
HOLMES	051C0024	178.05	ACONA WATER ASSOCIATION INC	25-Jul-19
HOLMES	051D0006	198	ACONA WATER ASSOCIATION INC	25-Jul-19
HOLMES	051E0014	189.1	LEBANON WATER ASSOCIATION INC	25-Jul-19
HOLMES	051K0030	159.45	MARSHALL SCHOOL	24-Jul-19
HOLMES	051K0046	158.58	TCHULA, CITY OF	25-Jul-19
HOLMES	051L0009	175.9	LEBANON WATER ASSOCIATION INC	25-Jul-19
HOLMES	051L0043	196.25	NORQUIST, ERIC	25-Jul-19
HOLMES	051N0029	215.75	HOLMES INTERSTATE UTILITY DISTRICT	25-Jul-19
HOLMES	051P0002	199.35	SWEET HOME WATER AND SEWER DISTRICT	25-Jul-19
HOLMES	051S0004	178	SOUTH HOLMES WATER ASSOCIATION	6-Aug-19
HOLMES	051S0018	177.9	SOUTH HOLMES WATER ASSOCIATION	6-Aug-19
HOLMES	051T0025	219.7	DURANT, CITY OF	25-Jul-19
HOLMES	051V0019	173.8	EBEZEZER WATER ASSOCIATION	24-Jul-19
HUMPHREYS	053A0082	122.55	WRIGHT FISH FARMS INC	25-Jul-19
HUMPHREYS	053G0061	144	JONES, BERNARD	12-Dec-19
JASPER	061B0017	261.5	TALLAHALA WATER ASSOCIATION INC	10-Sep-19
LAFAYETTE	071A0020	284.7	HARMONTOWN WATER ASSOCIATION INC	28-Feb-19
LAFAYETTE	071B0002	331.8	HURRICANE CREEK WATER ASSOCIATION INC	8-May-19
LAFAYETTE	071B0008	321.3	WILSONART LLC	27-Feb-19
LAFAYETTE	E0001-071	307.3	WESTOVER WATER ASSOCIATION INC	27-Feb-19
LAFAYETTE	071E0055	330.55	OXFORD, CITY OF	27-Feb-19
LAFAYETTE	071E0059	323.6	OXFORD, CITY OF	27-Feb-19
LAFAYETTE	071F0102	286.2	WESTOVER WATER ASSOCIATION INC	27-Feb-19
LAFAYETTE	071E0065	307.6	COLLEGE HILL WATER ASSOCIATION INC	27-Feb-19
LAFAYETTE	071E0095	325.8	OXFORD, CITY OF	27-Feb-19
LAFAYETTE	071F0001	408.9	CAMPGROUND WATER ASSOCIATION	27-Feb-19
LAFAYETTE	071F0023	434.8	OXFORD, CITY OF	27-Feb-19
LAFAYETTE	071F0028	404.3	OXFORD, CITY OF	27-Feb-19
LAFAYETTE	071F0086	350.9	UNIVERSITY OF MISSISSIPPI	27-Feb-19
LAFAYETTE	071F0113	383.57	OXFORD, CITY OF	27-Feb-19
LAFAYETTE	071F0142	361.7	OXFORD, CITY OF	27-Feb-19
LAFAYETTE	071F0148	358.35	OXFORD, CITY OF	27-Feb-19
LAFAYETTE	071F0149	341.45	UNIVERSITY OF MISSISSIPPI	27-Feb-19
LAFAYETTE	071F0154	356.48	OXFORD, CITY OF	27-Feb-19
LAFAYETTE	071F0182	338.05	OXFORD, CITY OF	27-Feb-19
LAFAYETTE	071G0021	442.9	HOPEWATER ASSOCIATION INC	1-Mar-19
LAFAYETTE	071J0059	295.75	TAYLOR WATER ASSOCIATION INC	1-Mar-19
LAUDERDALE	075C0016	276.6	PAT HARRISON WATERWAY DISTRICT	21-Aug-19
LAUDERDALE	075C0022	300	BOONE, A GARY AND BARBARA	21-Aug-19
LEAKE	079F0054	263.6	NEW PROVIDENCE WATER ASSOCIATION INC	14-Aug-19
LEAKE	079K0016	230.4	CARTHAGE, CITY OF	14-Aug-19
LEAKE	079K0032	213	CARTHAGE, CITY OF	14-Aug-19
LEAKE	079L0033	246.7	FRENEY WATER ASSOCIATION	13-Aug-19
LEAKE	079P0044	242.1	WALNUT GROVE, TOWN OF	15-Aug-19
LEFLORE	083C0114	100.5	SCHLATER, TOWN OF	19-Jun-19
LEFLORE	083K0039	108.15	STATE OF MISSISSIPPI FLOREWOOD RIVER PLANTATION	18-Jun-19
LEFLORE	083L0059	102.3	GREENWOOD UTILITIES COMMISSION	17-Jun-19
LEFLORE	083L0079	109.3	GREENWOOD UTILITIES	22-May-19
LEFLORE	083L0196	106.5	GREENWOOD UTILITIES	17-Jun-19
LEFLORE	083O0053	114	SIDON, TOWN OF	22-May-19
MADISON	086H0040	190.95	EAST MADISON WATER ASSOCIATION INC	14-Aug-19
MADISON	086K0008	195.3	CANTON MUNICIPAL UTILITIES	15-Aug-19
MADISON	089O0046	185.4	EAST MADISON WATER ASSOCIATION INC	14-Aug-19
MARSHALL	093F0183	364.98	WOODS, ROBERT L	7-May-19
MARSHALL	093N0116	347.4	LOFTIN, BOBBIE	7-May-19
MARSHALL	093P0008	424	HOLLY SPRINGS, CITY OF	12-Sep-19
MONTGOMERY	097F0029	241.1	WINONA, CITY OF	10-Jul-19
MONTGOMERY	097F0032	239.45	WINONA, CITY OF	10-Jul-19
MONTGOMERY	097J0003	252.2	MISSISSIPPI FORESTRY COMMISSION	10-Jul-19
MONTGOMERY	097J0010	264.5	SOUTH WINONA WATER ASSOCIATION INC	10-Jul-19
NESHOMA	099K0051	317.1	CENTRAL WATER ASSOCIATION	31-Jul-19
NEWTON	101B0041	310	UNION, CITY OF	4-Sep-19
NEWTON	101G0048	300.6	DECATUR, TOWN OF	4-Sep-19
NEWTON	101K0055	273.3	ESCO CORPORATION	4-Sep-19
NEWTON	101L0064	286.85	HICKORY, TOWN OF	4-Sep-19
PANOLA	107N0048	247.55	HOTOPIA WATER ASSOCIATION INC	6-Mar-19
PANOLA	107W0051	266.35	LOVEJOY WATER ASSOCIATION INC	27-Feb-19
PANOLA	107W0054	270.7	LOVEJOY WATER ASSOCIATION INC	27-Feb-19
PANOLA	107W0059	226.5	ROCKCO MINING LLC	6-Mar-19
QUITMAN	119H0008	151.85	BELEN WATER ASSOCIATION	13-Mar-19
QUITMAN	119H0036	148.5	LAMBERT, TOWN OF	13-Mar-19
SCOTT	123C0018	222.5	H AND H WATER SYSTEM INC	4-Sep-19
SCOTT	123E0040	207.2	LAND F WATER ASSOCIATION	4-Sep-19
SCOTT	123G0042	203.8	STEELE-RINGOLD-GOODHOPE WATER ASSOCIATION INC	4-Sep-19
SCOTT	123H0027	125.9	FOREST, CITY OF	4-Sep-19
SCOTT	123I0050	157.4	FOREST, CITY OF	4-Sep-19
SCOTT	123M0063	238.9	LAKE, TOWN OF	4-Sep-19
SCOTT	123M0068	208	STEELE-RINGOLD-GOODHOPE WATER ASSOCIATION INC	4-Sep-19
SCOTT	123P0020	210.8	HOMEWOOD WATER ASSOCIATION INC	4-Sep-19
SCOTT	123Q0020	216.4	PINEVILLE WATER ASSOCIATION INC	4-Sep-19
SUNFLOWER	133F0006	96.4	RULEVILLE, CITY OF	22-May-19
SUNFLOWER	133F0070	93.2	DREW, CITY OF	22-May-19
SUNFLOWER	133M0076	92	INDIANOLA, CITY OF	22-May-19
SUNFLOWER	133P0128	110.35	FMH WATER ASSOCIATION INC	22-May-19
SUNFLOWER	133Q0028	99.5	INDIANOLA, CITY OF	22-May-19
SUNFLOWER	133R0031	88.9	MOORHEAD, CITY OF	22-May-19
TALLAHATCHEE	135C0024	113.1	TUTTLER, TOWN OF	16-May-19
TALLAHATCHEE	135C0041	119.45	TUTTLER, TOWN OF	16-May-19
TALLAHATCHEE	135F0045	159.65	CHARLESTON, CITY OF	13-Mar-19
TALLAHATCHEE	135H0024	110.95	SUMNER, TOWN OF	16-May-19
TALLAHATCHEE	135K0026	139.5	BLUE CANE, COWART, TIPPO WATER ASSOCIATION	22-May-19
TALLAHATCHEE	135Q0096	137.2	GLENDORA, VILLAGE OF	22-May-19
TALLAHATCHEE	135P0029	136.51	BLUE CHANNEL ENTERPRISE	22-May-19
TALLAHATCHEE	135S0045	133.7	PHILIPP WATER ASSOCIATION	16-May-19
WASHINGTON	15150049	160.82	GLEN ALLAN UTILITY DISTRICT	4-Jun-19
YALOBUSHA	161C0030	280.6	WATER VALLEY, CITY OF	16-May-19
YALOBUSHA	161C0073	295.5	WATER VALLEY, CITY OF	16-May-19
YAZOO	163C0019	181.1	MIDWAY COMMUNITY WATER ASSOCIATION	15-Aug-19
YAZOO	163C0026	171.1	MIDWAY COMMUNITY WATER ASSOCIATION	15-Aug-19
YAZOO	163O0030	182.2	CASEY JONES WATER ASSOCIATION INC	24-Jul-19
YAZOO	163O0043	174	CASEY JONES WATER ASSOCIATION INC	24-Jul-19



This map produced by the Department of Environmental Quality (DEQ), Office of Land & Water Resources, Water Resources Management Division on March 21, 2020.

All map data is from the Mississippi Automated Resource Information System (MARIS), and MDEQ.

Map Projection: Mississippi Transverse Mercator

The Mississippi Department of Environmental Quality makes no warranties, expressed or implied, as to the accuracy, completeness, currency, reliability, or suitability for any particular purpose, of the data contained on this map.

Due to the interpretive nature and generalized scope of this document, information presented herein should not be considered a substitute for the collection of site-specific data. The accuracy and completeness of some source data used in the preparation of this document cannot be warranted. For these reasons, this document should be regarded as a guide to be used for general planning purposes only.