

# Potentiometric Map Lower Wilcox Aquifer

Contour Interval: 20 Feet  
Datum is Sea Level

0 12.5 25 50 Miles

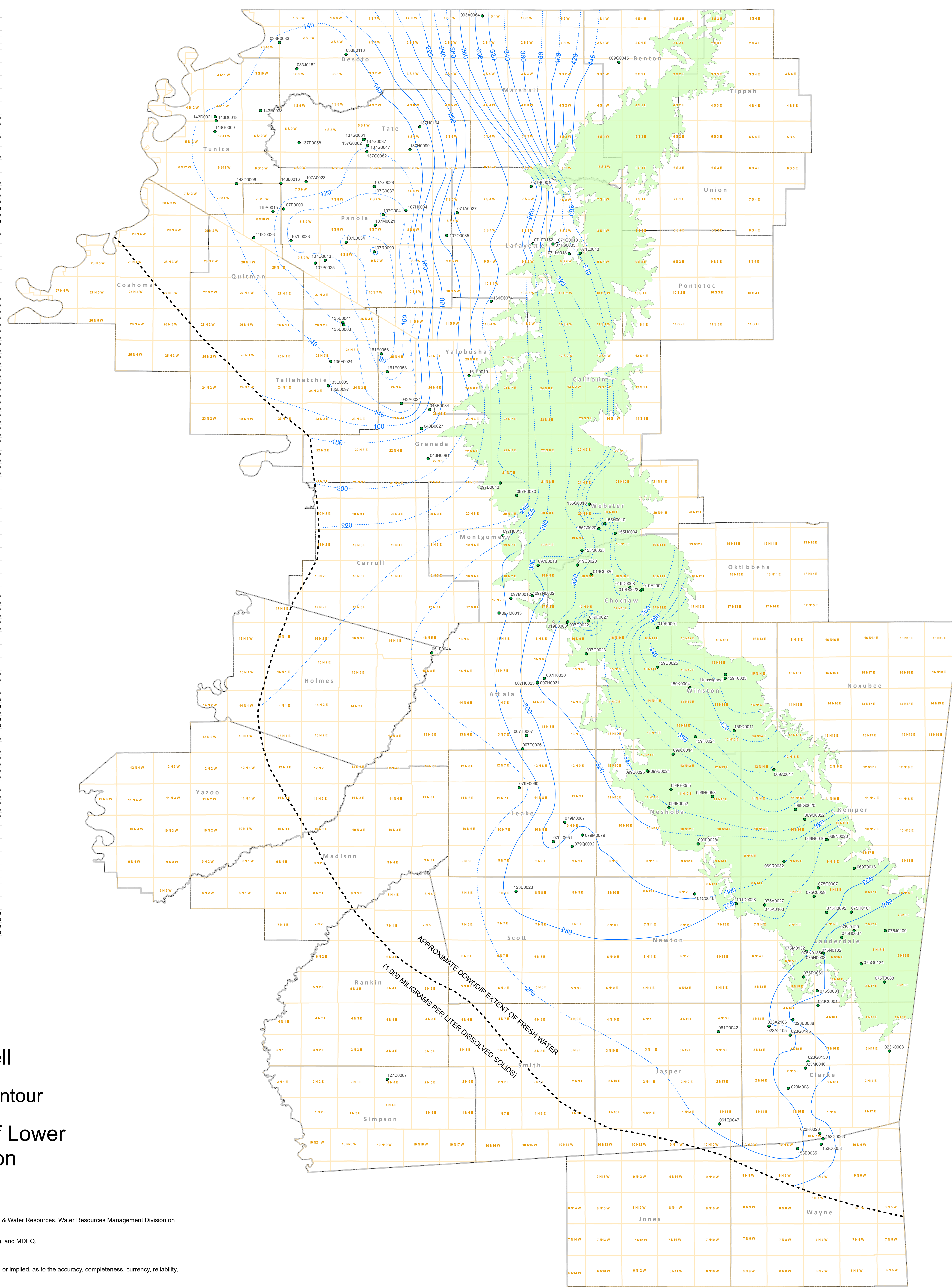
Study Area



Lyndsey F. Henley, PE  
&  
Joshawa Billiot, RPG



County	Well Number	Owner	Head Value in Feet Relative to MSL	Date Measured
ATTALA	0070022	FRENCH CAMP ACADEMY	325.7	18-Jul-19
ATTALA	0070023	MCCOOL, TOWN OF	322.4	30-Jul-19
ATTALA	0070025	ETHEL RURAL WATER ASSOCIATION	307.7	30-Jul-19
ATTALA	0070030	ETHEL, TOWN OF	328.45	30-Jul-19
ATTALA	0070031	ETHEL RURAL WATER ASSOCIATION	320.6	30-Jul-19
ATTALA	0070037	CONEHOMA WATER ASSOCIATION INC	294.7	18-Jul-19
ATTALA	0070036	CONEHOMA WATER ASSOCIATION INC	289	18-Jul-19
BENTON	0095045	SIMPSON, KEVIN	451.9	7-May-19
CHOCTAW	0150023	UNION WATER ASSOCIATION OF CHOCTAW COUNTY INC	316.85	20-Jun-19
CHOCTAW	0150026	UNION WATER ASSOCIATION OF CHOCTAW COUNTY INC	329.65	20-Jun-19
CHOCTAW	0150028	REFORM WATER USERS ASSOCIATION INC	354	19-Jun-19
CHOCTAW	0150031	REFORM WATER USERS ASSOCIATION INC	352.1	19-Jun-19
CHOCTAW	0190003	FRENCH CAMP WATER ASSOCIATION INC	330.7	20-Jun-19
CHOCTAW	0190007	SIMPSON WATER ASSOCIATION	271.6	19-Jun-19
CHOCTAW	0190001	CHOCTAW LAKE	446.9	19-Jun-19
CHOCTAW	0190068	MISSISSIPPI LIGNITE MINING CO.	346.6	20-Jun-19
CLARKE	0234205	ENTERPRISE, TOWN OF	263.5	12-Sep-19
CLARKE	0234206	EQUISALE ASSOCIATES INC	262.2	12-Sep-19
CLARKE	0238088	HARMONY WATER ASSOCIATION INC	238.2	5-Sep-19
CLARKE	0238091	CLARKDALE WATER ASSOCIATION INC	232.25	10-Sep-19
CLARKE	0238092	QUITMAN, CITY OF	258.2	5-Sep-19
CLARKE	0238093	STONEWALL, TOWN OF	273.1	5-Sep-19
CLARKE	0238098	EAST QUITMAN WATER ASSOCIATION	218.3	10-Sep-19
CLARKE	0238096	QUITMAN, CITY OF	254	5-Sep-19
CLARKE	0238095	HARMONY WATER ASSOCIATION INC	266.5	5-Sep-19
CLARKE	0238020	SHUBUTA, TOWN OF	246.5	5-Sep-19
DESOTO	0338083	WALLS WATER ASSOCIATION INC	134.7	13-Feb-19
DESOTO	0338011	NEST WATER ASSOCIATION INC	137.6	13-Feb-19
DESOTO	0338012	NORTH MISSISSIPPI UTILITY COMPANY INC	135.4	13-Feb-19
GRENADA	0434024	G T AND Y UTILITY DISTRICT INC	114.7	29-May-19
GRENADA	0438034	G T AND Y UTILITY DISTRICT INC	177.4	29-May-19
GRENADA	0438031	GRENADA, CITY OF	138.15	29-May-19
GRENADA	0438027	GRENADA AIRPORT INDUSTRIAL PARK	174.3	29-May-19
HOLMES	0510044	WEST, TOWN OF	269.2	6-Aug-19
JASPER	0610042	ROSE HILL WATER ASSOCIATION	263.5	12-Sep-19
JASPER	0610047	HEIDELBERG, TOWN OF	271.1	5-Sep-19
KEMPER	0690017	NORTHWEST KEMPER WATER ASSOCIATION	397.9	1-Aug-19
KEMPER	0690020	DEKALB, TOWN OF	390.5	1-Aug-19
KEMPER	0690022	KIPING WATER ASSOCIATION	380.9	1-Aug-19
KEMPER	0690020	KIPING WATER ASSOCIATION	275.05	1-Aug-19
KEMPER	0690032	NORTHWEST KEMPER WATER ASSOCIATION	301.1	1-Aug-19
KEMPER	0690036	PORTERVILLE WATER ASSOCIATION INC	276.3	1-Aug-19
KEMPER	0690016	KIPING WATER ASSOCIATION	276.4	1-Aug-19
LAFAVETTE	0714027	US ARMY CORPS OF ENGINEERS	223.94	1-Mar-19
LAFAVETTE	0718001	ABBEVILLE, TOWN OF	249.3	28-Feb-19
LAFAVETTE	0718012	EAST OXFORD WATER ASSOCIATION INC	287.85	27-Feb-19
LAFAVETTE	0718018	PUNKIN WATER ASSOCIATION	314.4	27-Feb-19
LAFAVETTE	0718035	PUNKIN WATER ASSOCIATION	339.4	27-Feb-19
LAFAVETTE	0718033	DEMARBY WATER ASSOCIATION INC	340.8	27-Feb-19
LAFAVETTE	0718038	YOCOMA WATER ASSOCIATION INC	313	27-Feb-19
LAUDERDALE	0754027	COLLINSVILLE WATER ASSOCIATION INC	290.6	29-Aug-19
LAUDERDALE	0754033	COLLINSVILLE WATER ASSOCIATION INC	292	29-Aug-19
LAUDERDALE	0754032	COVINGTON, HERRY KEITH	261.6	29-Aug-19
LAUDERDALE	0754059	NORTH LAUDERDALE WATER ASSOCIATION INC	267.9	28-Aug-19
LAUDERDALE	0754037	LAUDERDALE COUNTY BOARD OF SUPERVISORS	237.5	29-Aug-19
LAUDERDALE	0754046	NORTH LAUDERDALE WATER ASSOCIATION INC	269.6	28-Aug-19
LAUDERDALE	0754051	NORTH LAUDERDALE WATER ASSOCIATION INC	250.95	28-Aug-19
LAUDERDALE	0754059	TOOMSUBA WATER SYSTEM INC	226.3	29-Aug-19
LAUDERDALE	0754059	RUSSELL UTILITIES INC	232.85	29-Aug-19
LAUDERDALE	0754052	MERIDIAN COMMUNITY COLLEGE	271.65	21-Aug-19
LAUDERDALE	0754003	MERIDIAN, CITY OF	240.7	21-Aug-19
LAUDERDALE	0754012	MERIDIAN, CITY OF	240.95	21-Aug-19
LAUDERDALE	0754013	MERIDIAN, CITY OF	240.9	21-Aug-19
LAUDERDALE	0754014	LONG CREEK WATER ASSOCIATION INC	246.3	29-Aug-19
LAUDERDALE	0758069	SOUTHWEST LAUDERDALE WATER ASSOCIATION INC	246.8	21-Aug-19
LAUDERDALE	0758004	CLARKDALE WATER ASSOCIATION INC	248	21-Aug-19
LAUDERDALE	0758088	LONG CREEK WATER ASSOCIATION INC	223.7	29-Aug-19
LEAKE	0790060	TYSON FARMS INC	252	6-Aug-19
LEAKE	0790051	FRENEY WATER ASSOCIATION	304.1	13-Aug-19
LEAKE	0790079	FRENEY WATER ASSOCIATION	289.65	13-Aug-19
LEAKE	0790087	FRENEY WATER ASSOCIATION	303.4	13-Aug-19
LEAKE	0790032	FRENEY WATER ASSOCIATION	299.35	13-Aug-19
MARSHALL	0944004	MARSHALL COUNTY WATER ASSOCIATION INC	313.1	7-May-19
MONTGOMERY	0978002	HAYS CREEK WATER ASSOCIATION	236.9	30-Jul-19
MONTGOMERY	0978018	STEWART WATER ASSOCIATION INC	307	9-Jul-19
MONTGOMERY	0978012	POPLAR CREEK WATER ASSOCIATION	283.5	20-Jun-19
MONTGOMERY	0978013	POPLAR CREEK WATER ASSOCIATION	278.4	20-Jun-19
MONTGOMERY	0978002	FRENCH CAMP WATER ASSOCIATION INC	285.7	20-Jun-19
MONTGOMERY	0978070	HAYS CREEK WATER ASSOCIATION	225.7	30-Jul-19
MONTGOMERY	0978013	HAYS CREEK WATER ASSOCIATION	252.2	30-Jul-19
NESHOMA	0998025	CENTRAL WATER ASSOCIATION	344.45	31-Jul-19
NESHOMA	0998025	CENTRAL WATER ASSOCIATION	341.35	31-Jul-19
NESHOMA	0998014	CENTRAL WATER ASSOCIATION	354.25	31-Jul-19
NESHOMA	0998012	PHILADELPHIA UTILITIES	339.75	31-Jul-19
NESHOMA	0998005	CENTRAL WATER ASSOCIATION	349.3	31-Jul-19
NESHOMA	0998053	CENTRAL WATER ASSOCIATION	351.55	31-Jul-19
NESHOMA	0998028	CENTRAL WATER ASSOCIATION	312.7	31-Jul-19
NESHOMA	0998046	BEHLAN HUSBAND WATER ASSOCIATION INC	302	4-Sep-19
NEWTON	1010028	DUFFEE WATER ASSOCIATION INC	272.3	4-Sep-19
PANOLA	1074023	ASL WATER ASSOCIATION INC	133.1	8-May-19
PANOLA	1074009	JENKINS EGG FARM	119.2	13-Mar-19
PANOLA	1074008	COMO, TOWN OF	111.3	13-Mar-19
PANOLA	1074037	COMO, TOWN OF	117.35	13-Mar-19
PANOLA	1074041	SARDIS, CITY OF	77.84	13-Mar-19
PANOLA	1074034	PANOLA UNION WATER ASSOCIATION INC	109.2	27-Feb-19
PANOLA	1074021	HEBRON WATER ASSOCIATION INC	87.95	27-Feb-19
PANOLA	1074035	SARDIS LAKE COMMUNITY WATER ASSOCIATION	210.8	1-Mar-19
PANOLA	1074025	ENON, LOCKS STATION CURTIS WATER ASSOCIATION INC	110.46	8-May-19
PANOLA	1074013	TENNESSEE GAS PIPELINE	115.9	8-May-19
PANOLA	1074090	BATESVILLE, CITY OF	57.8	6-Mar-19
PANOLA	1074034	CONCORD MACEDONIA WATER ASSOCIATION	77.1	6-Mar-19
PANOLA	1074033	CONCORD MACEDONIA WATER ASSOCIATION	90.6	6-Mar-19
QUITMAN	1194015	SLEDGE, TOWN OF	123.8	13-Mar-19
QUITMAN	1194026	DARLING WATER ASSOCIATION	123.2	13-Mar-19
SCOTT	1218023	C AND C WATER ASSOCIATION INC	288.9	4-Sep-19
SIMPSON	1270087	DLO GAS STORAGE LLC	247.5	14-Aug-19
TALLAHATCHEE	1358003	NORTH TALLAHATCHEE WATER ASSOCIATION	123.8	15-May-19
TALLAHATCHEE	1358001	NORTH TALLAHATCHEE WATER ASSOCIATION	107.6	15-May-19
TALLAHATCHEE	1358024	CHARLESTON, CITY OF	139.45	13-Mar-19
TALLAHATCHEE	1358005	PAYNES WATER ASSOCIATION INC	134.6	22-May-19
TALLAHATCHEE	1358007	PAYNES WATER ASSOCIATION INC	146.6	22-May-19
TATE	1370058	STRATHORN WATER ASSOCIATION INC	130.1	8-May-19
TATE	1370037	SENATOBIA, CITY OF	133.45	20-Dec-19
TATE	1370061	SENATOBIA, CITY OF	128.4	8-May-19
TATE	1370099	COACHMAN	139	13-Feb-19
TATE	1370082	SENATOBIA, TOWN OF	113.3	13-Feb-19
TATE	1370047	SENATOBIA, TOWN OF	123.25	13-Feb-19
TATE	1370062	SENATOBIA, TOWN OF	133	13-Feb-19
TATE	1370054	INDEPENDENCE HIGH SCHOOL	149.85	13-Feb-19
TUNICA	1438038	TUNICA COUNTY UTILITY DISTRICT	134.2	8-May-19
TUNICA	1438016	CRENSHAW, TOWN OF	138.9	13-Feb-19
TUNICA	1438009	TUNICA, TOWN OF	123.3	13-Feb-19
TUNICA	1438018	TUNICA, TOWN OF	125.7	13-Feb-19
TUNICA	1438021	TUNICA, TOWN OF	128.3	13-Feb-19
TUNICA	1438006	DUNDEE WA	129.35	13-Feb-19
WAYNE	1538035	HIWANNEE WATER ASSOCIATION INC	262.7	5-Sep-19
WAYNE	1538058	WAYNE COUNTY SCHOOL BOARD	246	5-Sep-19
WAYNE	1538063	HIWANNEE WATER ASSOCIATION INC	228.02	5-Sep-19
WEBSTER	1550010	WEBSTER CENTER WATER ASSOCIATION INC	379.05	30-Jul-19
WEBSTER	1550003	MT ZION WATER ASSOCIATION	365.1	20-Jun-19
WEBSTER	1550004	EUPORA, CITY OF	357.35	20-Jun-19
WEBSTER	1550010	MT ZION WATER ASSOCIATION	296	20-Jun-19
WEBSTER	1550025	TOWNKLEEN WATER ASSOCIATION INC	265.45	20-Jun-19
WINSTON	1590025	HIGHPOINT WATER ASSOCIATION	427.3	24-Jul-19
WINSTON	1590033	PUGH'S MILL WATER ASSOCIATION INC	463.25	18-Jul-19
WINSTON	1590004	LOUISVILLE UTILITY	410.2	24-Jul-19
WINSTON	1590021	SOUTHEAST NOKAPER WATER ASSOCIATION	388.5	18-Jul-19
WINSTON	1590011	NANHAI WATIA WATER ASSOCIATION	424.2	24-Jul-19
WINSTON	Unassigned	BOND WATER ASSOCIATION	499.2	25-Jul-19
YALOBUSHA	1610014	TRI LAKE RURAL WATER ASSOCIATION	247.6	16-May-19
YALOBUSHA	1610053	TILLATOSA WATER ASSOCIATION	19.9	15-May-19
YALOBUSHA	1610056	OAKLAND, TOWN OF	78.35	15-May-19
YALOBUSHA	1611009	COFFEVILLE, CITY OF	203	16-May-19



- Observation Well
- Potentiometric Contour
- Outcrop Area of Lower Wilcox Formation

This map produced by the Department of Environmental Quality (DEQ), Office of Land & Water Resources, Water Resources Management Division on March 21, 2020.  
 All map data is from the Mississippi Automated Resource Information System (MARIS), and MDEQ.  
 Map Projection: Mississippi Transverse Mercator  
 The Mississippi Department of Environmental Quality makes no warranties, expressed or implied, as to the accuracy, completeness, currency, reliability, or suitability for any particular purpose, of the data contained on this map.  
 Due to the interpretive nature and generalized scope of this document, information presented herein should not be considered a substitute for the collection of site-specific data. The accuracy and completeness of some source data used in the preparation of this document cannot be warranted. For these reasons, this document should be regarded as a guide to be used for general planning purposes only.