

Potentiometric Map of the Eutaw-McShan Aquifer in Northeastern Mississippi

Contour interval: 20 feet
Datum is sea level



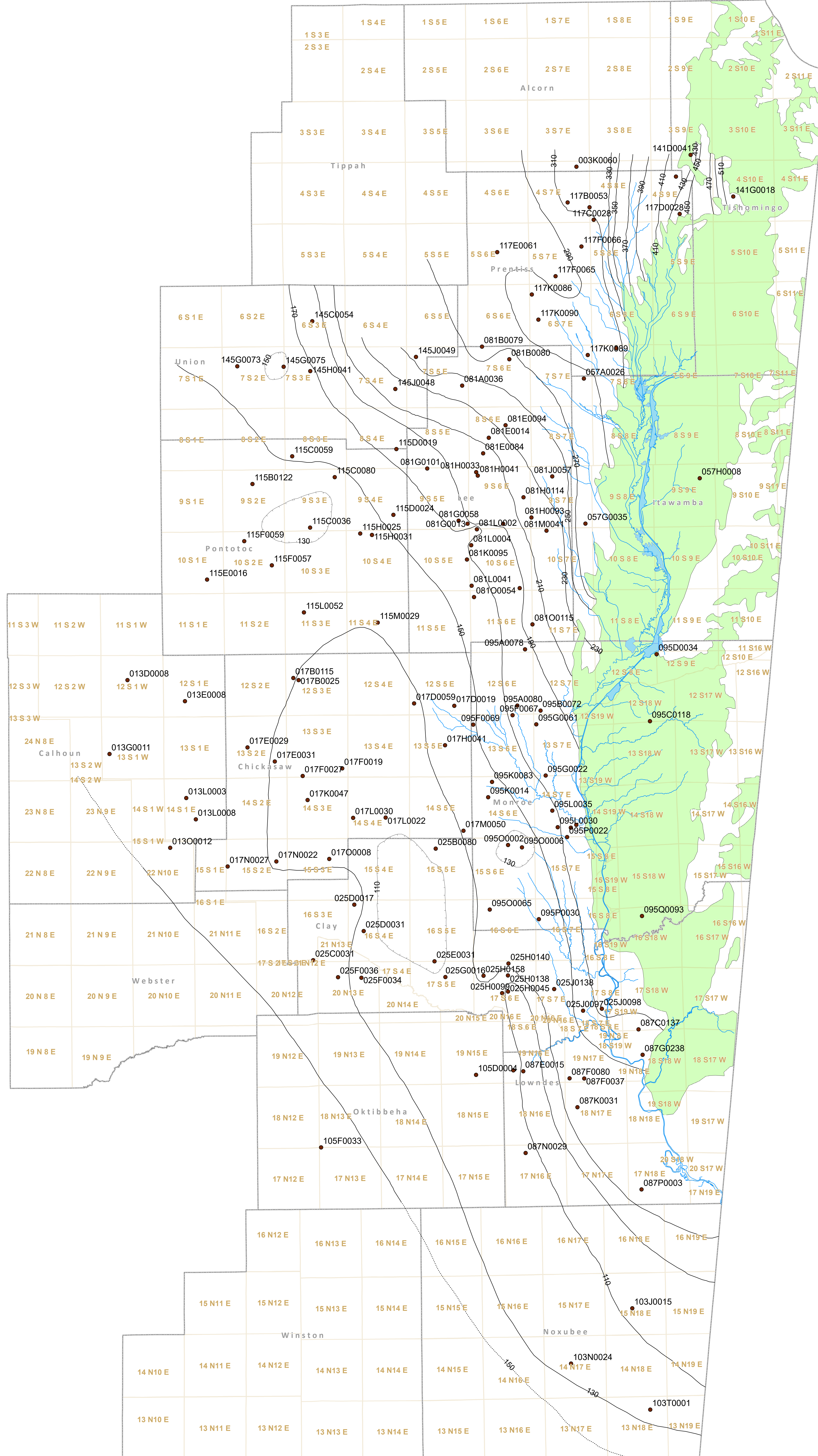
MISSISSIPPI DEPARTMENT OF ENVIRONMENTAL QUALITY

Austin Brister, GIT
2019

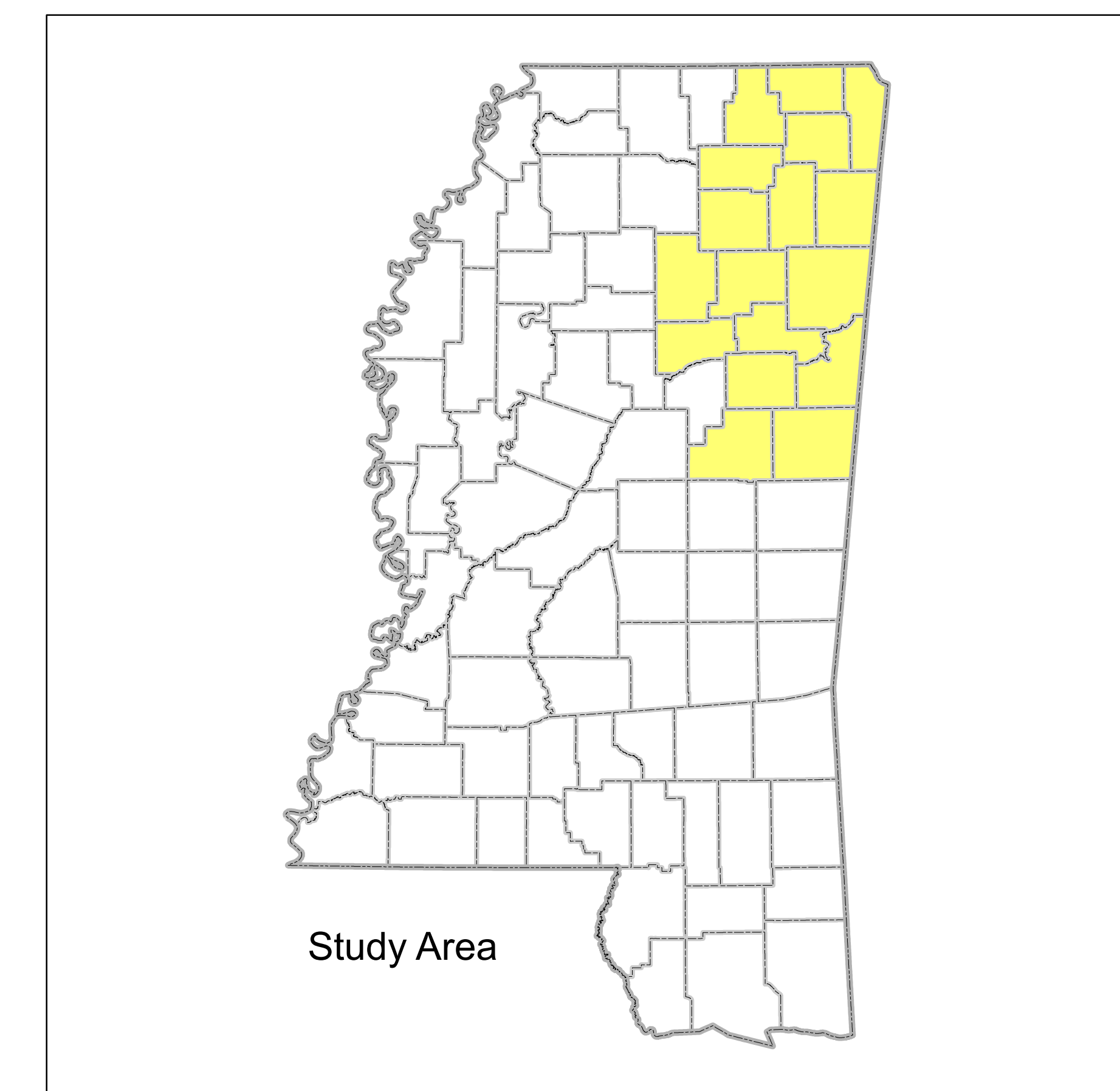
Prepared under direction of
John V. Banks, RPG



OLWR Hydrologic Map 19-2



County	Well Number	Head Value in Feet Relative to MSL	Date Measured	County	Well Number	Head Value in Feet Relative to MSL	Date Measured	Owner
ALCORN	003K0060	324.9	11-Jul-18	LOWNDES	087G0238	159.5	12-Sep-18	COLUMBUS-LOWNDES RECREATIONAL AUTHORITY
CAHOULN	013J0012	136	8-Aug-18	LOWNDES	087E0015	109.1	12-Sep-18	EAST MISSISSIPPI COMMUNITY COLLEGE GOLDEN TRIANGLE CAMPUS
CAHOULN	013L0023	341.8	29-Aug-18	LOWNDES	087E0026	118.2	25-Sep-18	GOLDEN TRIANGLE WATER ASSOCIATION INC
CAHOULN	013E0008	141.23	29-Aug-18	LOWNDES	087N0029	119.99	12-Sep-18	HOLCIM
CAHOULN	013D0008	138.65	28-Aug-18	LOWNDES	087F0037	135.6	12-Sep-18	LOWNDES COUNTY SCHOOL
CAHOULN	013G0011	241.9	8-Aug-18	LOWNDES	087F0080	133.25	12-Sep-18	MS SHERIFFS BOYS AND GIRLS RANCHES INC
CHICKASAW	017M0050	132.35	8-Aug-18	LOWNDES	087P0003	134.2	12-Sep-18	PLUM GROVE SCHOOL
CHICKASAW	017N0027	134.3	8-Aug-18	LOWNDES	087K0031	132.25	12-Sep-18	SCALES, L D
CHICKASAW	017Q0059	129	9-Aug-18	MONROE	095K0083	147.9	22-Aug-18	ABERDEEN, CITY OF
CHICKASAW	017H0041	141.7	9-Aug-18	MONROE	095L0015	171.55	22-Aug-18	ABERDEEN, CITY OF
CHICKASAW	017F0027	112.4	8-Aug-18	MONROE	095L0020	172.85	22-Aug-18	ABERDEEN, CITY OF
CHICKASAW	017M0050	132.35	8-Aug-18	MONROE	095L0030	169.6	22-Aug-18	ABERDEEN, CITY OF
CHICKASAW	017R0025	128.7	8-Aug-18	MONROE	095L0035	165.95	22-Aug-18	ABERDEEN, CITY OF
CHICKASAW	017R0115	132.05	8-Aug-18	MONROE	095G0002	127	22-Aug-18	ABERDEEN, CITY OF
CHICKASAW	017Q0019	133	9-Aug-18	MONROE	095G0006	125.65	22-Aug-18	ABERDEEN, CITY OF
CHICKASAW	017L0022	112.6	9-Aug-18	MONROE	095G0022	174.4	23-Aug-18	COONTAIL WATER ASSOCIATION INC
CHICKASAW	017L0030	118.8	9-Aug-18	MONROE	095F0069	150.65	22-Aug-18	EAST CHICKASAW WATER ASSOCIATION
CHICKASAW	017Q0047	124.4	8-Aug-18	MONROE	095P0022	175.7	22-Aug-18	GEORGIA GULF CHEMICALS AND VINYLIS LLC
CHICKASAW	017Q0008	124.4	8-Aug-18	MONROE	095C0083	154.65	22-Aug-18	HAMILTON PRIMITIVE BAPTIST CHURCH
CHICKASAW	017E0029	138.42	15-Aug-18	MONROE	095C0118	222.25	22-Aug-18	HATLEY HIGH SCHOOL
CHICKASAW	017E0031	129.6	15-Aug-18	MONROE	095A0078	183.6	22-Aug-18	NETTLETON, CITY OF
CHICKASAW	017F0019	130.05	22-Aug-18	MONROE	095C0065	135.15	23-Aug-18	SILDOM WATER DISTRICT INC
CHICKASAW	017N0022	126.9	8-Aug-18	MONROE	095K0014	138.9	22-Aug-18	TEXAS EASTERN CORP
CHICKASAW	017N0022	126.9	8-Aug-18	MONROE	095C0034	214.4	22-Aug-18	US ARMY CORPS OF ENGINEERS
CLAY	025G0016	119.6	20-Sep-18	MONROE	095P0030	145.8	22-Aug-18	WATSON, GEORGE
CLAY	025C0031	140.7	20-Sep-18	MONROE	095A0080	179.25	22-Aug-18	WREN WATER DISTRICT INC
CLAY	025E0031	90.65	20-Sep-18	MONROE	095B0072	181.2	22-Aug-18	WREN WATER DISTRICT INC
CLAY	025H0080	111.3	20-Sep-18	MONROE	095B0072	181.2	22-Aug-18	WREN WATER DISTRICT INC
CLAY	025D0031	111.8	20-Sep-18	MONROE	095G0061	182.13	22-Aug-18	WREN WATER DISTRICT INC
CLAY	025F0034	124.3	20-Sep-18	NOXUBEE	103T0001	121.25	3-Oct-18	CIRCLE M BRANCH
CLAY	025F0036	138.7	20-Sep-18	NOXUBEE	103N0024	126.2	27-Sep-18	HALEY, LEVI
CLAY	025M0017	142.2	20-Sep-18	NOXUBEE	103U0015	106.9	4-Oct-18	KEDIN, ARTHUR
CLAY	025I0097	162	20-Sep-18	OKTIBBEHA	105F0033	160.15	9-Oct-18	ECHOLS, HERMAN
CLAY	025I0098	171.77	20-Sep-18	OKTIBBEHA	105F0033	160.15	11-Oct-18	NOVELL, A B
CLAY	025H0045	99.9	20-Sep-18	PONTOTOC	115F0057	139.6	9-Aug-18	ALGOMA WATER ASSOCIATION
CLAY	025H0059	126.24	20-Sep-18	PONTOTOC	115F0059	132.5	9-Aug-18	ALGOMA WATER ASSOCIATION
CLAY	025H0138	127.5	20-Sep-18	PONTOTOC	115L0022	145.04	9-Aug-18	ALGOMA WATER ASSOCIATION
CLAY	025H0140	134.65	20-Sep-18	PONTOTOC	115G0024	152	9-Aug-18	EAST PONTOTOC WATER ASSOCIATION
CLAY	025H0158	138.25	20-Sep-18	PONTOTOC	115H0031	148	9-Aug-18	EAST PONTOTOC WATER ASSOCIATION
CLAY	025I0136	138.7	20-Sep-18	PONTOTOC	115C0059	152.5	8-Aug-18	ECRU, TOWN OF
ITAWAMBA	057G0035	278.85	16-Aug-18	PONTOTOC	115D0122	144.2	8-Aug-18	MUD CREEK WATER ASSOCIATION INC
ITAWAMBA	057H0008	422.21	16-Aug-18	PONTOTOC	115C0080	135.8	8-Aug-18	DAK HILL WATER ASSOCIATION
ITAWAMBA	057A0026	284.6	17-Aug-18	PONTOTOC	115H0025	141.35	4-Aug-18	PONTOTOC COUNTRY CLUB
LEE	081R0079	274	9-Aug-18	PONTOTOC	115C0036	123.8	2-Aug-18	PONTOTOC, CITY OF
LEE	081R0080	257.9	9-Aug-18	PONTOTOC	115E0116	149.1	8-Aug-18	RANDOLPH WATER ASSOCIATION INC
LEE	081L0015	200.25	15-Aug-18	PONTOTOC	115D0019	184.6	8-Aug-18	SHERMAN, TOWN OF
LEE	081L0087	187.85	15-Aug-18	PONTOTOC	115K0029	130.82	4-Aug-18	TROY WATER ASSOCIATION
LEE	081H0093	216.7	18-Oct-18	PRENTISS	117F0066	304.9	26-Jul-18	BIG V WATER ASSOCIATION
LEE	081K0057	232.85	18-Oct-18	PRENTISS	117E0061	285.4	13-Jul-18	BLACKLAND WATER ASSOCIATION
LEE	081M0041	214.25	16-Aug-18	PRENTISS	117E0018	410.05	26-Jul-18	HOLCUTT CANYON WATER ASSOCIATION
LEE	081E0094	239.7	16-Aug-18	PRENTISS	117E0091	299.6	25-Jul-18	MARIETTA, TOWN OF
LEE	081A0036	243.15	16-Aug-18	PRENTISS	117R0057	322.4	26-Jul-18	NEW CANDLER WATER ASSOCIATION
LEE	081G0101	181.41	16-Aug-18	PRENTISS	117C0028	309.45	26-Jul-18	NEW CANDLER WATER ASSOCIATION
LEE	081H0114	228.8	16-Aug-18	PRENTISS	117R0089	306.15	25-Jul-18	SOUTH PRENTISS BAPTIST CHURCH
LEE	081E0014	214.1	16-Aug-18	PRENTISS	117E0018	315	11-Jul-18	THRASHER WATER ASSOCIATION
LEE	081E0084	201.9	16-Aug-18	PRENTISS	117D0028	448.05	25-Jul-18	US ARMY CORPS OF ENGINEERS
LEE	081L0004	171.54	15-Aug-18	PRENTISS	117F0065	278.1	11-Jul-18	WHEELER-FRANKSTOWN WATER ASSOCIATION INC
LEE	081G0013	189.5	18-Oct-18	PRENTISS	117K0086	295.55	11-Jul-18	WHEELER-FRANKSTOWN WATER ASSOCIATION INC
LEE	081G0056	172.37	15-Aug-18	PRENTISS	117E0030	293.4	11-Jul-18	WHEELER-FRANKSTOWN WATER ASSOCIATION INC
LEE	081H0105	190.8	15-Aug-18	TISHOMINGO	141D0041	423.8	5-Jul-18	GRAY, ANISON
LEE	081K0095	162.85	15-Aug-18	TISHOMINGO	141E0018	514.6	5-Jul-18	MASSENGILL, HERON
LEE	081L0002	168.7	15-Aug-18	UNION	145I0049	257.6	18-Jul-18	ALPINE WATER ASSOCIATION
LEE	081L0041	159.8	15-Aug-18	UNION	145J0048	226.35	18-Jul-18	BLUE SPRINGS WATER ASSOCIATION
LEE	081L0054	165.15	15-Aug-18	UNION	145K0041	169.4	18-Jul-18	HICKORY SPRINGS INC
LEE	081H0033	193.7	16-Aug-18	UNION	145G0073	157.6	18-Jul-18	HIGHWAY 30 WEST WATER ASSOCIATION INC
LEE	081H0041	202.8	16-Aug-18	UNION	145C0054	181.6	18-Jul-18	JASPER CREEK LLC
LOWNDES	087C0137	159.15	19-Sep-18	UNION	145G0075	149	18-Jul-18	NEW ALBANY, CITY OF



- Observation Well
- Potentiometric Contour
- Outcrop Area of Eutaw-McShan Formation

This map produced by the Department of Environmental Quality (DEQ), Office of Land & Water Resources, Water Management Division on February 28, 2019. All map data is from the Mississippi Automated Resource Information System (MARIS), and MDEQ. The Mississippi Department of Environmental Quality makes no warranties, expressed or implied, as to the accuracy, completeness, currentness, reliability, or suitability for any particular purpose, of the data contained on this map. Due to the interpretive nature and generalized scope of this document, information presented herein should not be considered a substitute for the collection of site-specific data. The accuracy and completeness of some source data used in the preparation of this document cannot be warranted. For these reasons, this document should be regarded as a guide to be used for general planning purposes only.