

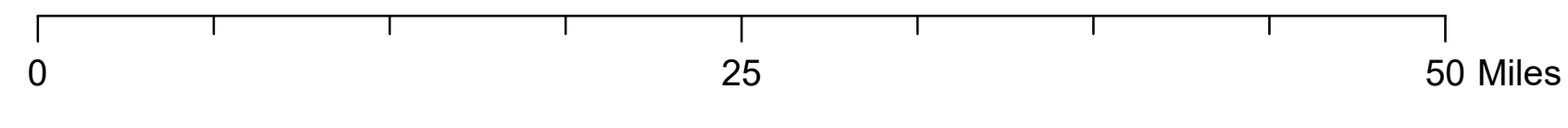
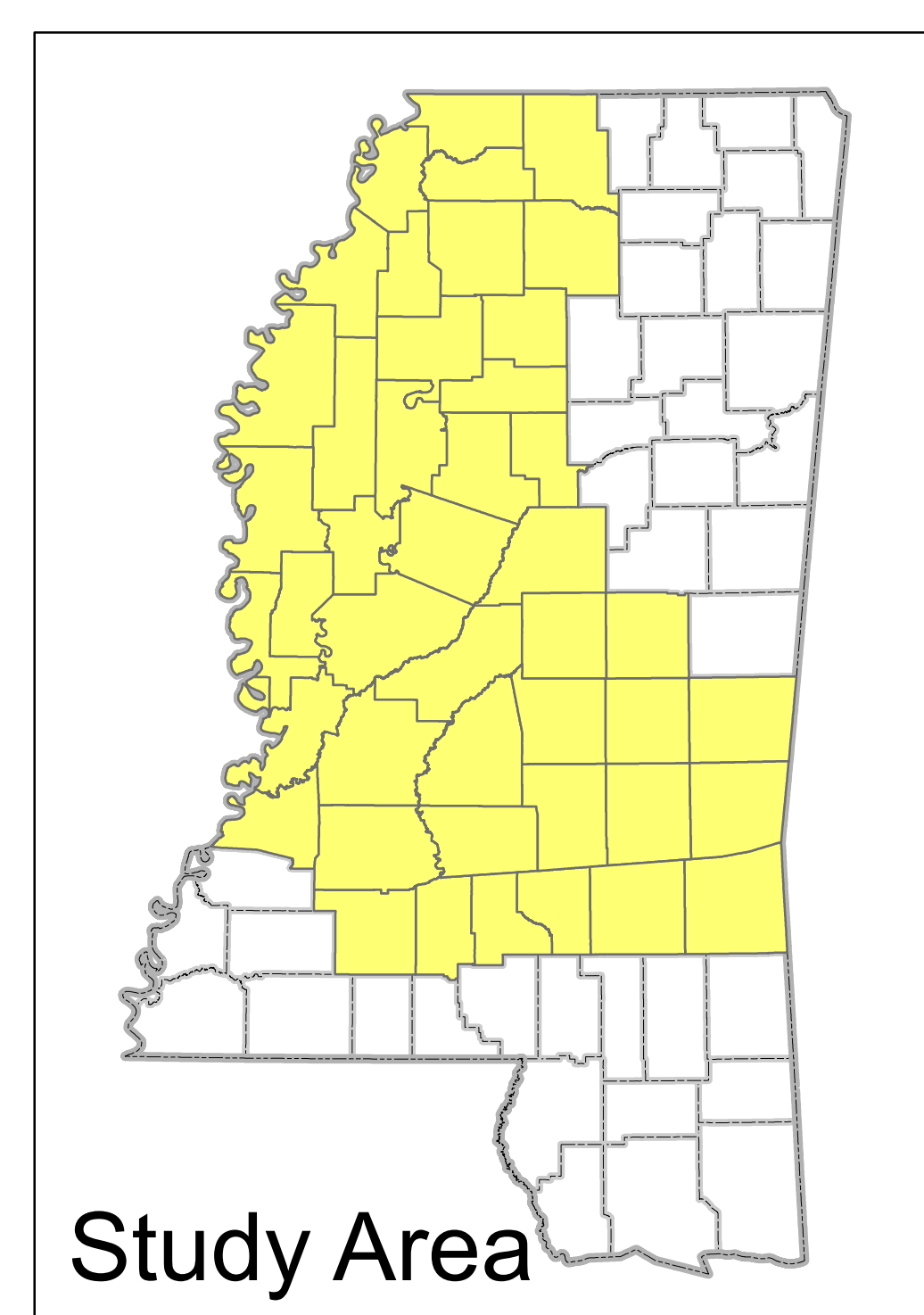
Potentiometric Map

Sparta Aquifer

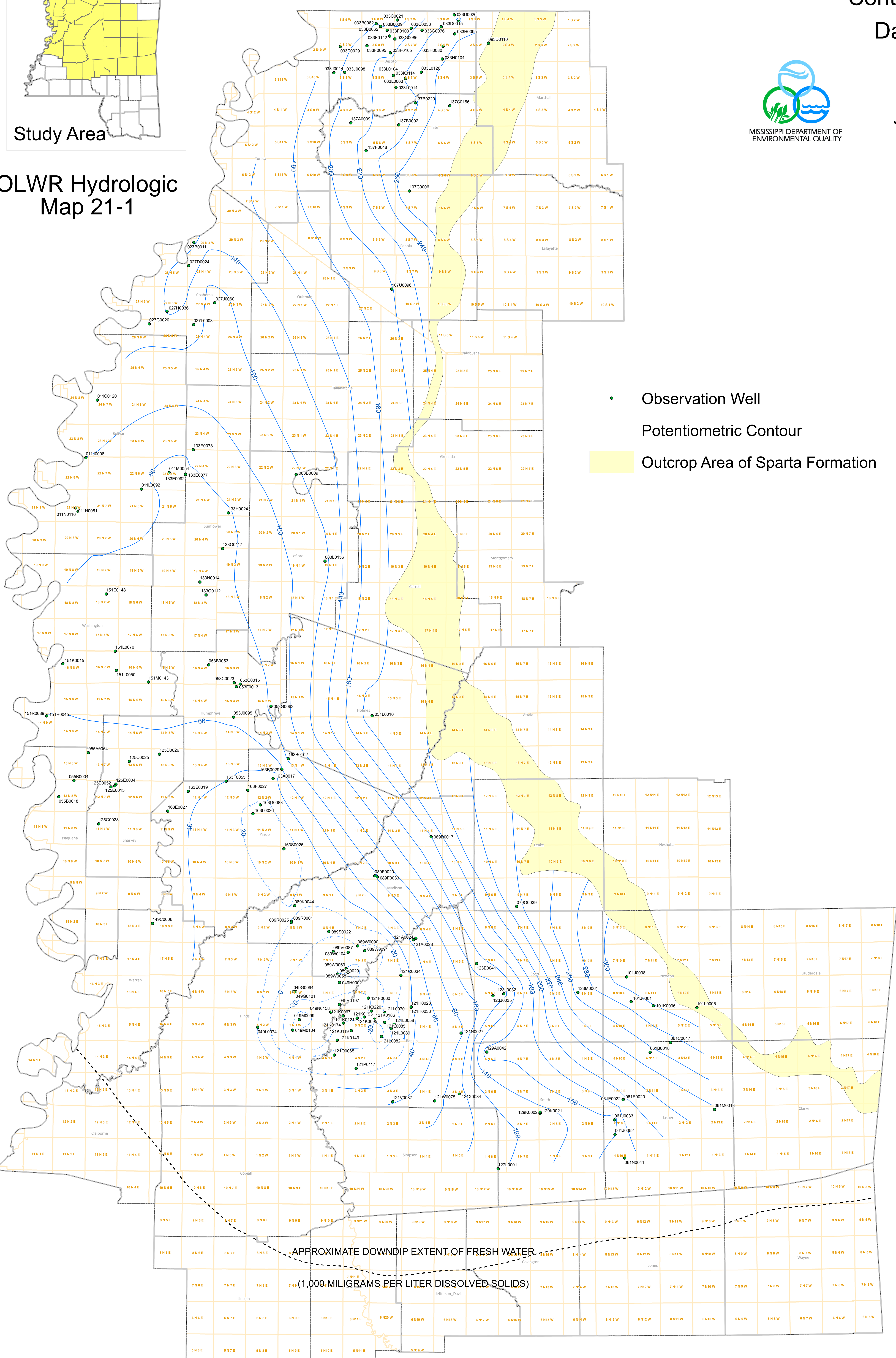
Contour Interval: 20 Feet

Datum is Sea Level

Lyndsey Henley, PE
&
Joshawa Billiot, RPG
2021



OLWR Hydrologic
Map 21-1



- Observation Well
- Potentiometric Contour
- Outcrop Area of Sparta Formation

County	Well Number	Water Level in Feet Relative to MSL	Owner	Date Measured
BOLIVAR	011C0120	114.20	GUNNISON, TOWN OF	26-Sep-19
BOLIVAR	011L0008	99.80	BEULAH, TOWN OF	26-Sep-19
BOLIVAR	011L0092	84.20	TOWN OF SKENE	19-Sep-19
BOLIVAR	011M0054	70.00	CLEVELAND, CITY OF	26-Sep-19
BOLIVAR	011N0051	91.50	BENOIT, TOWN OF	25-Sep-19
BOLIVAR	011M0116	84.30	BOYLE-SKENE WATER CORPORATION INC	19-Sep-19
COAHOMA	027R0011	138.70	FRIARS POINT, TOWN OF	26-Sep-19
COAHOMA	027D0024	145.50	STOVALL DEVELOPMENT	19-Sep-19
COAHOMA	027G0020	124.05	RENA LARA WATER ASSOCIATION INC	26-Sep-19
COAHOMA	027H0036	140.90	OSCAR CONNELL	19-Sep-19
COAHOMA	027J0069	109.10	SAINTE ELIZABETH CATHOLIC CONGREGATION	17-Sep-19
COAHOMA	027L0003	130.55	TEXAS GAS TRANSMISSION LLC	19-Sep-19
DESOTO	033E0029	187.75	TEXAS GAS TRANSMISSION LLC	11-Sep-19
DESOTO	033M0009	199.40	HORN LAKE, CITY OF	10-Sep-19
DESOTO	033R0062	206.20	HORN LAKE, CITY OF	10-Sep-19
DESOTO	033R0082	200.55	HORN LAKE, CITY OF	10-Sep-19
DESOTO	033C0021	189.00	SOUTHAVEN, CITY OF	11-Sep-19
DESOTO	033C0033	215.10	SOUTHAVEN, CITY OF	11-Sep-19
DESOTO	033D0015	239.40	OLIVE BRANCH, CITY OF	19-Sep-19
DESOTO	033D0026	251.25	OLIVE BRANCH, CITY OF	19-Sep-19
DESOTO	033D0144	237.20	OLIVE BRANCH, CITY OF	19-Sep-19
DESOTO	033F0095	217.10	DAVIS WATER ASSOCIATION INC	10-Sep-19
DESOTO	033F0103	212.65	HORN LAKE WATER ASSOCIATION INC	10-Sep-19
DESOTO	033F0105	215.30	NESBIT WATER ASSOCIATION INC	10-Sep-19
DESOTO	033F0142	212.40	HORN LAKE WATER ASSOCIATION INC	10-Sep-19
DESOTO	033G0076	232.30	OLIVE BRANCH, CITY OF	19-Sep-19
DESOTO	033G0086	214.70	SOUTHAVEN, CITY OF	11-Sep-19
DESOTO	033H0080	254.50	LEWISBURG WATER ASSOCIATION INC	19-Sep-19
DESOTO	033H0095	256.65	OLIVE BRANCH, CITY OF	19-Sep-19
DESOTO	033H0104	258.40	LEWISBURG WATER ASSOCIATION INC	19-Sep-19
DESOTO	033J0014	192.62	EUDORA UTILITIES ASSOCIATION, INC.	11-Sep-19
DESOTO	033J0098	204.50	NORTH MISSISSIPPI UTILITY COMPANY INC	11-Sep-19
DESOTO	033K0023	226.79	HERNANDO, CITY OF	10-Sep-19
DESOTO	033L0014	225.90	BELMONT WATER ASSOCIATION INC	10-Sep-19
DESOTO	033L0063	240.80	NORTH MISSISSIPPI UTILITY COMPANY INC	11-Sep-19
DESOTO	033L0104	234.50	HERNANDO, CITY OF	10-Sep-19
DESOTO	033L0126	253.40	NORTH MISSISSIPPI UTILITY COMPANY INC	11-Sep-19
HINDS	049G0094	-7.80	CLINTON PUBLIC SCHOOL DISTRICT, TRUSTEE	19-Nov-19
HINDS	049G0101	-10.38	CLINTON PUBLIC SCHOOL DISTRICT, TRUSTEE	19-Nov-19
HINDS	049H0002	-0.50	FERNWOOD WATER COMPANY	14-Nov-19
HINDS	049H0197	-36.87	MDWFP MS MUSEUM OF NATURAL SCIENCE	14-Nov-19
HINDS	049L0074	21.91	RAYMOND, CITY OF	18-Nov-19
HINDS	049M0099	-52.30	JACKSON, CITY OF	21-Nov-19
HINDS	049M0104	-39.50	JACKSON, CITY OF	21-Nov-19
HINDS	049N0158	-30.70	MADISON	14-Nov-19
HUMPHREYS	051L0010	190.94	LEXINGTON COUNTRY CLUB	3-Oct-19
HUMPHREYS	053B0053	63.85	TENNESSEE GAS PIPELINE COMPANY	1-Oct-19
HUMPHREYS	053C0015	61.75	BELZONI, CITY OF	2-Oct-19
HUMPHREYS	053C0023	69.75	BELZONI, CITY OF	2-Oct-19
HUMPHREYS	053C0033	64.60	BELZONI, CITY OF	2-Oct-19
HUMPHREYS	053G0063	81.95	HUMPHREYS COUNTY WATER ASSOCIATION	8-Oct-19
HUMPHREYS	053J0095	63.00	SILVER CITY, TOWN OF	1-Oct-19
ISSAQUENA	055A0064	54.06	BLACK BAYOU WATER ASSOCIATION INC	26-Sep-19
ISSAQUENA	055B0004	52.81	GUIDING LIGHT CENTER	10-Oct-19
ISSAQUENA	055B0018	50.85	MID-VALLEY PIPELINE CO	10-Oct-19
JASPER	061E0023	186.00	LOUIN, TOWN OF	27-Feb-20
JASPER	061E0022	197.75	LOUIN, TOWN OF	27-Feb-20
JASPER	061R0018	255.10	TALLAHALA WATER ASSOCIATION INC	27-Feb-20
JASPER	061C0017	273.20	TALLAHALA WATER ASSOCIATION INC	27-Feb-20
JASPER	061J0033	149.65	BAY SPRINGS, CITY OF	27-Feb-20
JASPER	061K0052	159.60	BAY SPRINGS, CITY OF	27-Feb-20
JASPER	061M0013	237.50	LAKE EDDINS OWNERS ASSOCIATION INC	27-Feb-20
JASPER	061N0041	171.70	STRINGER WATERWORKS ASSOCIATION INC	27-Feb-20
LEAKE	079C0039	234.38	LENA, TOWN OF	9-Jan-20
LEFLORE	083B0009	117.40	EXPRESS GRAIN LLC	18-Sep-19
LEFLORE	083L0156	114.10	GREENWOOD UTILITIES	18-Sep-19
MADISON	089D0017	159.20	MADISON HIGH SCHOOL	6-Nov-19
MADISON	089F0020	76.39	BIG BLACK WATER DISTRICT	6-Nov-19
MADISON	089F0033	82.95	CANTON, CITY OF	12-Dec-19
MADISON	089K0044	22.80	WEST MADISON UTILITY DISTRICT	19-Nov-19
MADISON	089R0091	19.10	FLORA, TOWN OF	5-Nov-19
MADISON	089R0025	22.25	FLORA, TOWN OF	5-Nov-19
MADISON	089S0022	2.90	BEAR CREEK WATER ASSOCIATION INC	22-Jan-20
MADISON	089V0029	-21.25	TOUGALOO COLLEGE	6-Nov-19
MADISON	089V0087	-7.90	BEAR CREEK WATER ASSOCIATION INC	22-Jan-20
MADISON	089V0058	-23.10	RIDGLAND, CITY OF	6-Nov-19
MADISON	089V0069	-19.90	RIDGLAND, CITY OF	6-Nov-19
MADISON	089W0041	1.20	MADISON, CITY OF	8-Nov-19
MADISON	089W0094	-19.75	BEAR CREEK WATER ASSOCIATION INC	6-Nov-19
MADISON	089W0104	-8.70	MADISON, CITY OF	8-Nov-19
MARSHALL	093D0110	275.20	STANDARD CONSTRUCTION COMPANY INC	19-Sep-19
NEWTON	101J0001	286.60	SOUTH NEWTON RURAL WATER ASSOCIATION INC	9-Jan-20
NEWTON	101J0098	314.70	SOUTH NEWTON RURAL WATER ASSOCIATION INC	9-Jan-20
NEWTON	101K0096	299.00	NEWTON, CITY OF	9-Jan-20
NEWTON	101L0005	315.87	HICKORY, TOWN OF	9-Jan-20
PANOLA	107C0006	278.10	COMO, TOWN OF	19-Sep-19
PANOLA	107U0096	198.45	INDEPENDENCE WATER ASSOCIATION	5-Dec-19
RANKIN	121A0024	66.45	PEARL RIVER VALLEY WATER SUPPLY DISTRICT	4-Dec-19
RANKIN	121A0038	66.00	PEARL RIVER VALLEY WATER SUPPLY DISTRICT	4-Dec-19
RANKIN	121C0034	21.00	FANNIN WATER ASSOCIATION INC	4-Dec-19
RANKIN	121F0060	-18.60	FLOWOOD, CITY OF	12-Dec-19
RANKIN	121H0023	40.00	EVERGREEN WATER ASSOCIATION INC	5-Dec-19
RANKIN	121H0033	41.00	EVERGREEN WATER ASSOCIATION INC	5-Dec-19
RANKIN	121K0067	-28.23	FLOWOOD, CITY OF	12-Dec-19
RANKIN	121K0025	-24.47	PEARL, CITY OF	3-Dec-19
RANKIN	121K0119	-10.80	PEARL, CITY OF	3-Dec-19
RANKIN	121K0121	-20.88	PEARL, CITY OF	3-Dec-19
RANKIN	121K0149	-13.00	RICHLAND, CITY OF	3-Dec-19
RANKIN	121K0174	-17.21	PEARL, CITY OF	3-Dec-19
RANKIN	121K0098	314.70	PEARL, CITY OF	3-Dec-19
RANKIN	121K0193	-17.54	PEARL, CITY OF	3-Dec-19
RANKIN	121K0220	-16.45	PEARL, CITY OF	3-Dec-19
RANKIN	121L0058	13.30	BRANDON, CITY OF	19-Dec-19
RANKIN	121L0070	2.10	BRANDON, CITY OF	19-Dec-19
RANKIN	121L0082	-29.85	GREENFIELD WATER ASSOCIATION INC	4-Dec-19
RANKIN	121L0095	299.00	BRANDON, CITY OF	19-Dec-19
RANKIN	121L0089	16.70	BRANDON, CITY OF	19-Dec-19
RANKIN	121N0027	76.08	ACL WATER ASSOCIATION INC	18-Dec-19
RANKIN	121P0065	8.45	RICHLAND, CITY OF	13-Dec-19
RANKIN	121P0117	15.55	FLORENCE, CITY OF	3-Dec-19
RANKIN	121R0087	58.63	PINEY WOODS COUNTRY LIFE SCHOOL	4-Dec-19
RANKIN	121W0075	73.65	SOUTHEAST RANKIN WATER ASSOCIATION INC	12-Dec-19
RANKIN	121X0034	92.15	PUCKETT, TOWN OF	5-Dec-19
SCOTT	123C0041	128.68	LEESBURG WATER ASSOCIATION INC	9-Jan-20
SCOTT	123J0032	111.12	MORTON, CITY OF	9-Jan-20
SCOTT	123K0035	107.90	MORTON, CITY OF	9-Jan-20
SHARKEY	125F0061	216.65	SCOTT COUNTY BOARD OF SUPERVISORS	16-Jan-20
SHARKEY	125E0004	45.45	ROLLING FORK, CITY OF	22-Oct-19
SHARKEY	125E0015	46.15	ROLLING FORK, CITY OF	22-Oct-19
SHARKEY	125E0052	46.45	ROLLING FORK, CITY OF	22-Oct-19
SHARKEY	125C0025	48.10	ANGULLA, TOWN OF	29-Oct-19
SHARKEY	125J0026	53.50	TRUE LIGHT REDEVELOPMENT GROUP INC	23-Oct-19
SHARKEY	125G0028	44.60	CARY, TOWN OF	29-Oct-19
SIMPSON	127L0001	115.95	OKATOMA WATER ASSOCIATION	28-Feb-20
SMITH	129A0042	169.10	POLKVILLE, TOWN OF	26-Feb-20
SMITH	129K0002	124.15	RALEIGH, TOWN OF	26-Feb-20
SMITH	129K0021	134.70	RALEIGH, TOWN OF	26-Feb-20
SUNFLOWER	133C0077	77.20	BOYLE-SKENE WATER CORPORATION INC	19-Sep-19
SUNFLOWER	133E0078	83.00	SUNFLOWER WATER ASSOCIATION	19-Sep-19
SUNFLOWER	133E0092	78.70	BOYLE-SKENE WATER CORPORATION INC	19-Sep-19
SUNFLOWER	133H0024	77.90	SCRUGGS, W P	18-Sep-19
SUNFLOWER	133N0014	75.20	PEARSON NURSERY	18-Sep-19
SUNFLOWER	133P0117	72.30	SUNFLOWER, CITY OF	26-Sep-19
SUNFLOWER	133Q0112	78.15	MOON RIVER FOODS, INC	18-Sep-19
TATE	137A0009	207.95	ARKABUTLA WATER ASSOCIATION INC	12-Sep-19
TATE	137B0002	227.25	COLDWATER, TOWN OF	12-Sep-19
TATE	137B0020	237.00	BEARTALK FARMS LLC	12-Sep-19
TATE	137C0156	275.00	TRUNKLINE GAS COMPANY	12-Sep-19
TATE	137F0048	228.80	RENSHAW WATER ASSOCIATION INC	12-Sep-19
WARREN	148C0006	50.87	SIMRALL, B N	1-Oct-19
WASHINGTON	151E0148	76.75	DELTA BRANCH EXPERIMENT STATION	24-Sep-19
WASHINGTON	151K0015	65.40	WAYSIDE WATER ASSOCIATION INC	26-Sep-19
WASHINGTON	151L0050	72.18	ALDRIDGE, JOHN	24-Sep-19
WASHINGTON	151L0070	76.30	ARCOLA, TOWN OF	10-Oct-19
WASHINGTON	151M0143	74.60	BLACK BAYOU WATER ASSOCIATION	26-Sep-19
WASHINGTON	151R0045	57.65	BLACK BAYOU WATER ASSOCIATION INC	26-Sep-19
WASHINGTON	151R0089	60.90	BLACK BAYOU WATER ASSOCIATION INC	26-Sep-19
YAZOO	163E0019	46.05	LAKE CITY WATER ASSOCIATION INC	23-Oct-19
YAZOO	163E0027	47.40	LAKE CITY WATER ASSOCIATION INC	23-Oct-19
YAZOO	163A0017	23.80	RENSHAW WATER ASSOCIATION INC	23-Oct-19
YAZOO	163B0029	59.10	RENSHAW WATER ASSOCIATION INC	23-Oct-19
YAZOO	163B0102	83.75	EDEN, TOWN OF	23-Oct-19
YAZOO	163C0027	31.40	LAKE CITY WATER ASSOCIATION INC	28-Oct-19
YAZOO	163F0055	39.80	LAKE CITY WATER ASSOCIATION INC	23-Oct-19
YAZOO	163G0083	17.50	YAZOO CITY, CITY OF	23-Oct-19
YAZOO	163J0026	14.20	YAZOO CITY, CITY OF	23-Oct-19
YAZOO	163S0026	4.70	CENTRAL YAZOO WATER ASSOCIATION INC	29-Oct-19

This map produced by the Department of Environmental Quality (DEQ), Office of Land & Water Resources, Water Resources Management Division on March 21, 2021.

All map data is from the Mississippi Automated Resource Information System (MARIS), and MDEQ.

Map Projection: Mississippi Transverse Mercator

The Mississippi Department of Environmental Quality makes no warranties, expressed or implied, as to the accuracy, completeness, currency, reliability, or suitability for any particular purpose, of the data contained on this map.

Due to the interpretive nature and generalized scope of this document, information presented herein should not be considered a substitute for the collection of site-specific data. The accuracy and completeness of some source data used in the preparation of this document cannot be warranted. For these reasons, this document should be regarded as a guide to be used for general planning purposes only.