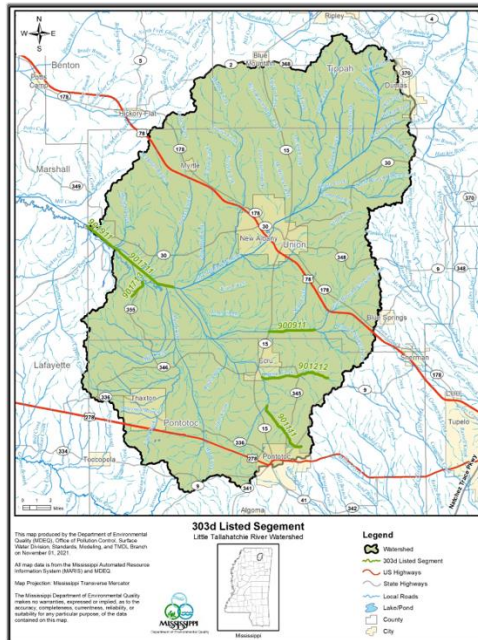


# TMDL Fact Sheet

## HUC 08030201 Sediment TMDL

In the Yazoo River Basin the two Little Tallahatchie River (Waterbody ID 901911 and 901711) segments on the 2020 Mississippi Section 303(d) List of Impaired Waterbodies have been identified as impaired due to sediment. Four other 303d listed waterbodies identified as biologically impaired are within the Little Tallahatchie River watershed, and future Stressor Identifications may indicate that other pollutants need to be addressed. Due to sediment being a watershed process these waterbodies received individually calculated loads; Unnamed Tributary to Little Tallahatchie River, Cherry Creek, Lyon Creek, and Okannatie Creek (Waterbody ID 901713, 901212, 901111, and 900911). This TMDL addresses impairment due to sediment/siltation located in Hydrologic Unit Codes (HUCs): 08030201 and sub watersheds; 080302010702, 080302010202, 080302010201, and 080302010103 as listed in the report. An estimated 41.33% to 97.87% reduction in sediment load across all basins is required to meet TMDL target loads. Best management practices are encouraged to reduce loads from non- point sources.



Subwatershed	Ecoregion	Area (Acres)	Estimated Load*	TMDL*	% Reduction
Little Tallahatchie River 901911	65	337,003.13	674.01 to 18,198.17	387.56	42.45% to 97.87%
Little Tallahatchie River 901711	65	335,822.88	671.65 to 18,134.44	386.50	42.5% to 97.87%
Unnamed Tributary to Little Tallahatchie River	65	1,383.52	2.77 to 74.71	1.59	41.33% to 97.86%
Cherry Creek	65	8,168.34	16.34 to 441.09	9.46	42.11% to 97.87%
Lyon Creek	65	10,010.21	20.02 to 540.55	11.51	42.51% to 97.87%
Okannatie Creek	65	30,342.00	60.68 to 1,638.47	34.90	42.49% to 97.87%

\*tons per day at the effective discharge

