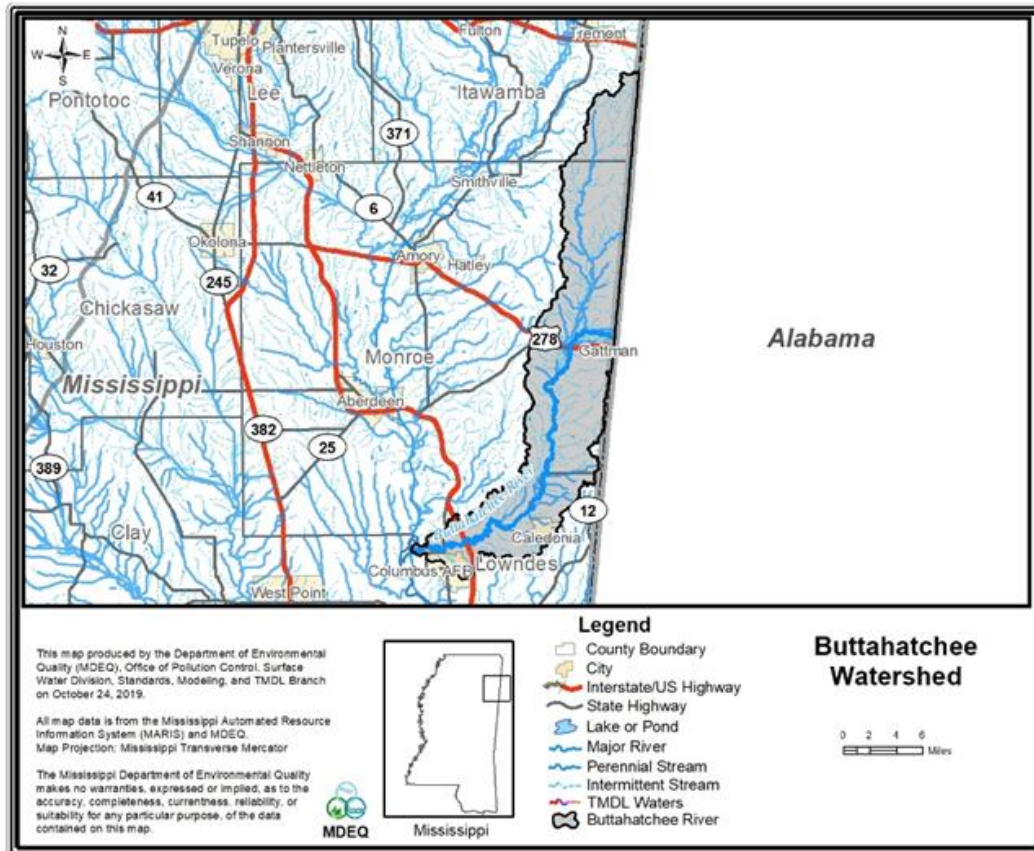


# TMDL Fact Sheet

## pH TMDL for Buttahatchee River Watershed

The Buttahatchee River (806711) near Greenwood Springs was identified as impaired due to pH by the Mississippi Department of Environmental Quality (MDEQ) and is listed on the 2018 Mississippi Section 303(d) List of Impaired Water Bodies (MDEQ, 2018). The specific causes of the low pH for this water body are not known but are believed to be a combination of point source effluent and storm water discharge over acidic soils. There are no active point sources in the watershed in Mississippi, but others may exist upstream in Alabama. The waste load allocation requires that the pH in effluent from future permitted point sources shall be within the range of 6.0 to 9.0 s.u.



Location of Buttahatchee River Watershed