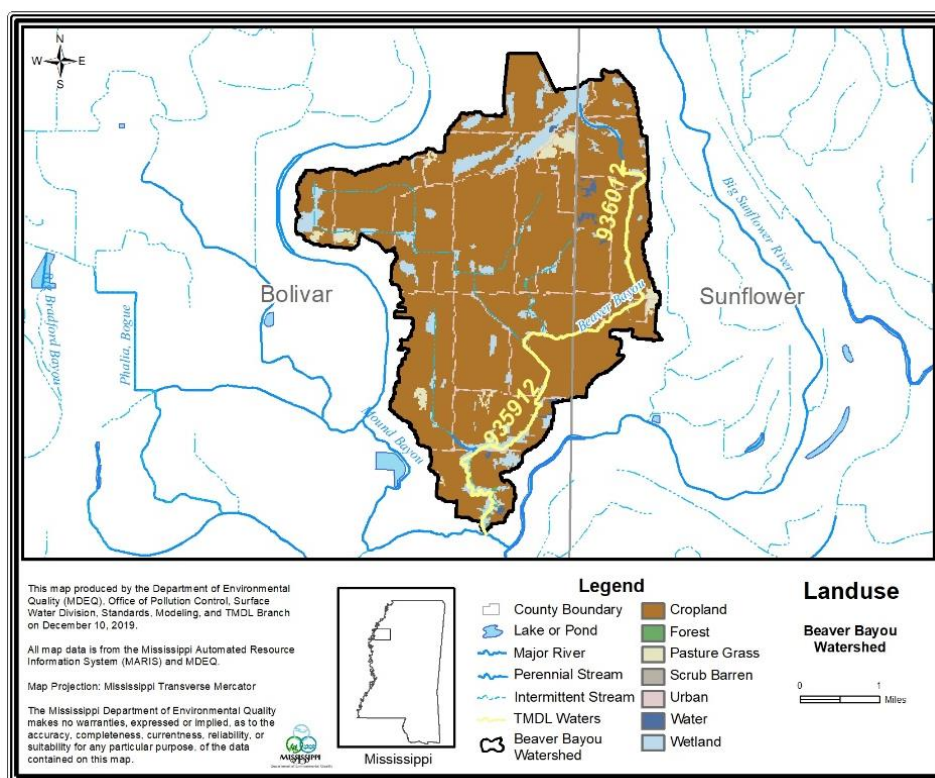


TMDL Fact Sheet

Organic Enrichment / Low Dissolved Oxygen TMDL For Beaver Bayou Watershed

Beaver Bayou is located east of Mound Bayou, Mississippi. There are no NPDES point sources in the watershed. The landuse of the watershed is predominantly agriculture (84.8%). MDEQ collected water quality data in 2007 and 2008, which indicated an impairment of the dissolved oxygen water quality. This report prescribes the Total Maximum Daily Load (TMDL) of the combined point source and non-point source loadings that will still meet the dissolved oxygen standard.



	Point Source Load (lbs/day)	Non- Point Source Load (lbs/day)
CBODu	0	16.73
NBODu	0	10.47
Total TMDL	0	27.20

The TMDL prescribes a **60.4% reduction** of loading in order to meet the dissolved oxygen water quality standard, based on the STREAM model. Best management practices are encouraged to reduce loads from leaving the agricultural fields.