

ENERGY EFFICIENCY IMPROVEMENT AND COST SAVING OPPORTUNITIES FOR THE FOOD AND BEVERAGE INDUSTRY

CHAO WANG, PH.D., ASSISTANT DIRECTOR, LSU-IAC

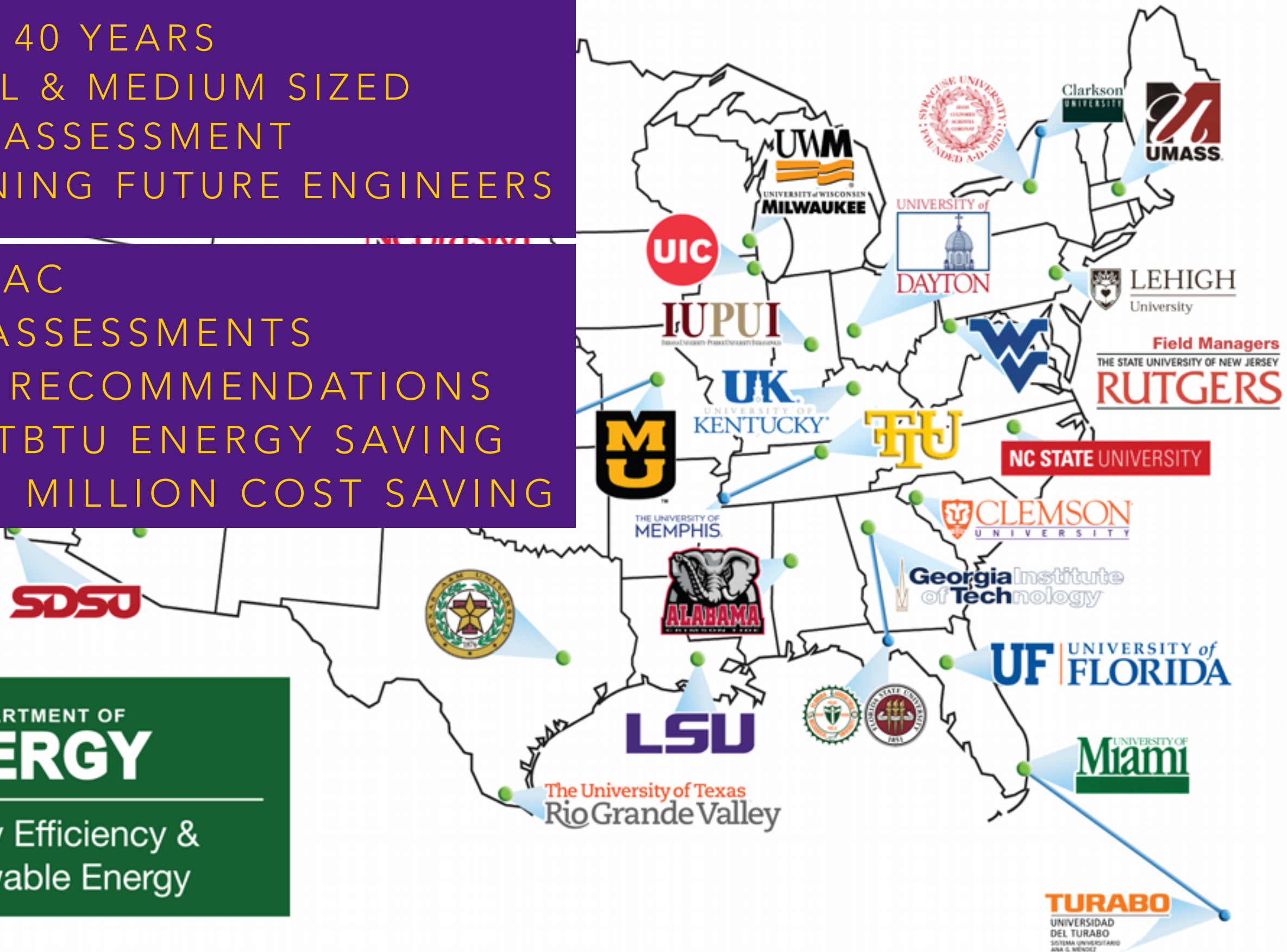
Industrial Assessment Centers 2017-2021

[HTTPS://IAC.UNIVERSITY](https://iac.university)

- OVER 40 YEARS
- SMALL & MEDIUM SIZED
- FREE ASSESSMENT
- TRAINING FUTURE ENGINEERS

LSU-IAC

- 30+ ASSESSMENTS
- 180+ RECOMMENDATIONS
- 0.36 TBTU ENERGY SAVING
- \$2.0+ MILLION COST SAVING



KICK-OFF MEETING



FACILITY TOUR



Louisiana State University Industrial Assessment Center



Energy, Waste, and Productivity Assistance for Industry
A U.S. Department of Energy Sponsored Program

Assessment Report

Report No.:	LS1809
Assessment Date:	June 05, 2018
Location:	New Orleans, LA
Principal Products:	Processed Meats

DATA COLLECTION

ASSESSMENT REPORT

PROCESS SUPPORT



BUILDING AND GROUNDS



ADMINISTRATIVE



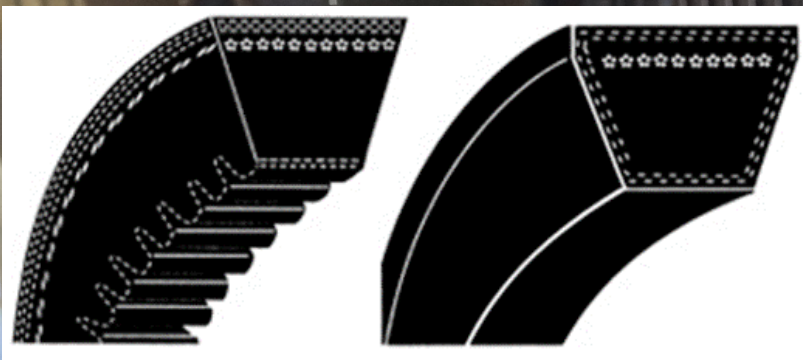
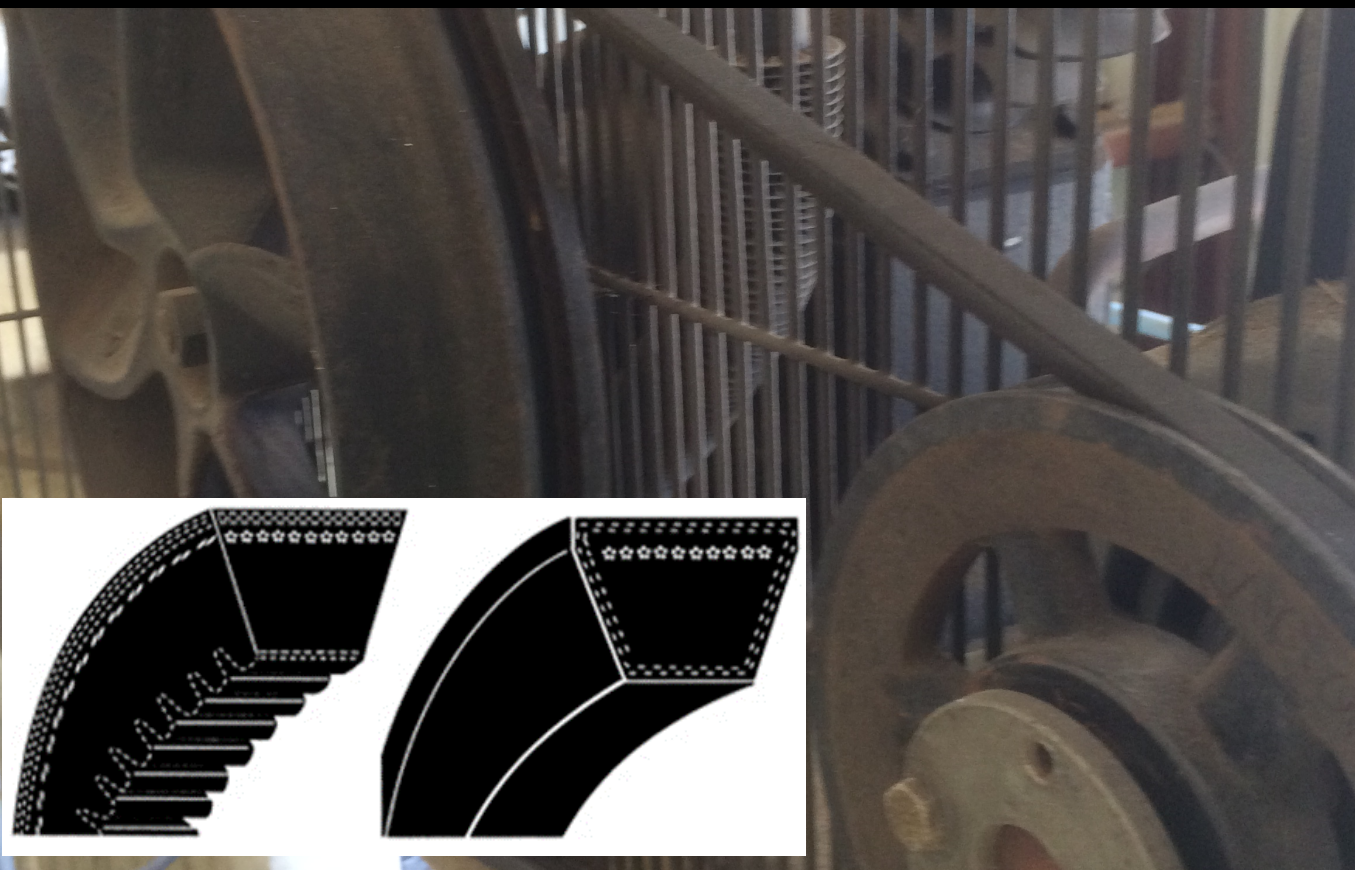
A photograph of industrial equipment in a workshop. A large, horizontal, cylindrical metal tank, possibly a boiler or water heater, is the central focus. It has a weathered, light-colored surface with some rust and a faded warning label that reads "DO NOT USE FORK LIFT ON STEEL". To the left of the tank, there are various pipes, valves, and a green electrical control box. In the foreground, a large, blue, circular industrial fan with a metal grille is visible. The fan is mounted on a small black wheel. The background shows a concrete floor and some wooden pallets.

PROCESS SUPPORT

- AIR COMPRESSOR
- BOILER
- WATER HEATER
- FREEZER
- PUMP

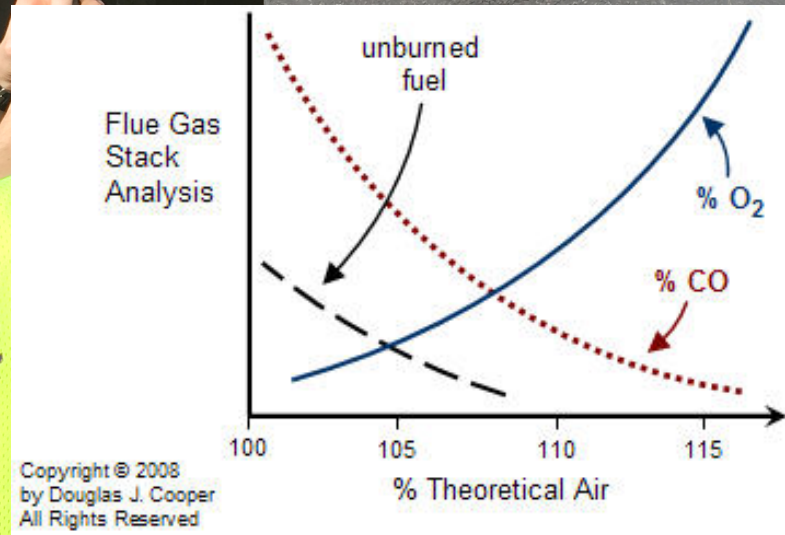
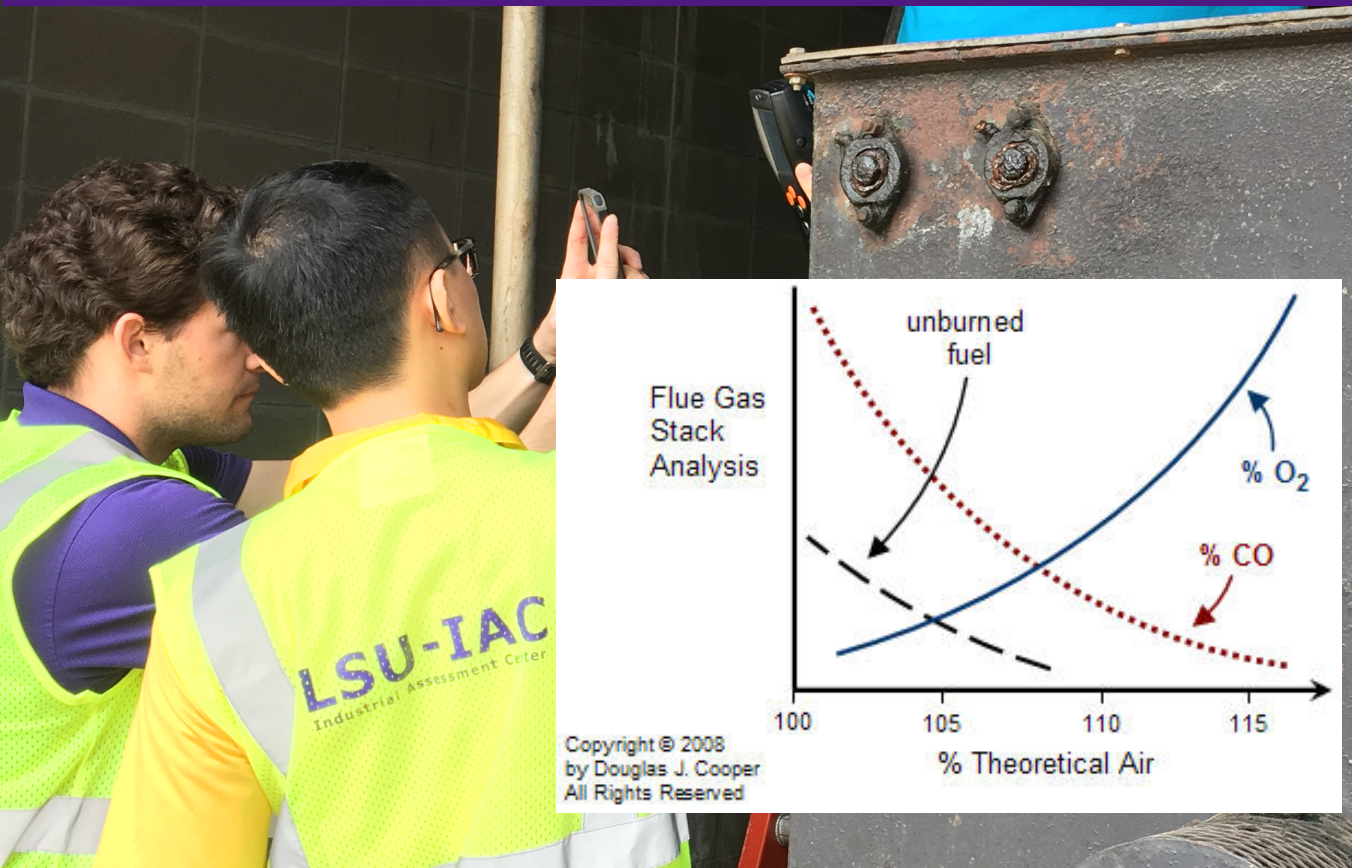
AIR COMPRESSOR

DISCHARGE PRESSURE REDUCTION



ENERGY EFFICIENT BELT MINIMUM AIR LEAKAGE

AIR TO GAS RATIO



BOILER (WATER
OR OIL)



DUCT INSULATION

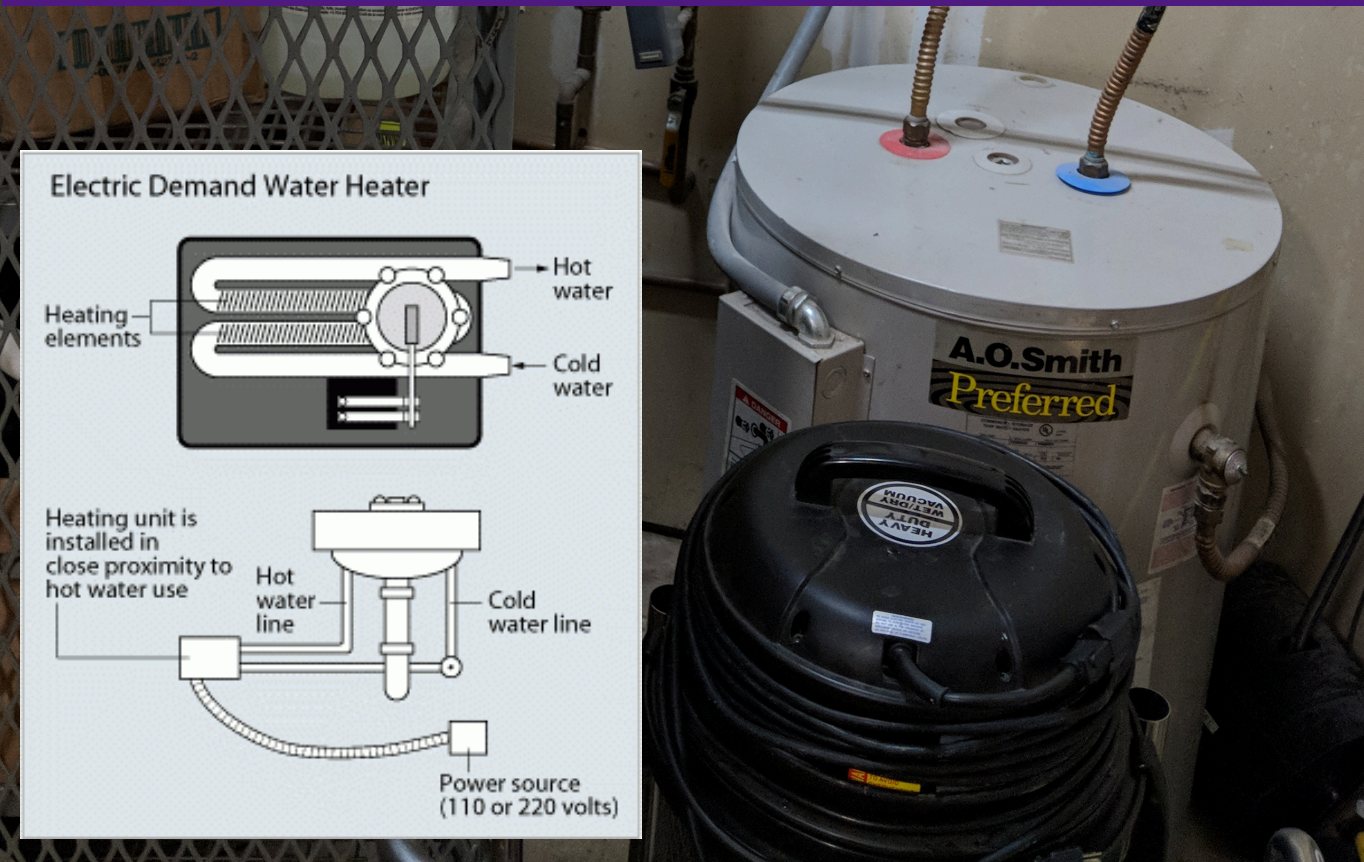


BLOWDOWN HEAT COLLECTION

PIPE INSULATION



TANKLESS WATER HEATER

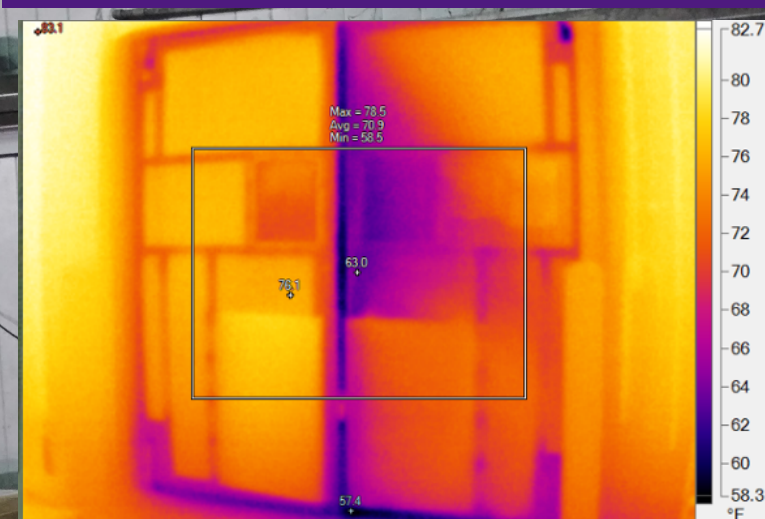


WATER HEATER & PUMP



VARIABLE FREQUENCY DRIVE

DOOR WEATHERSTRIPPING REPLACE METAL HALIDE IN FREEZER



FREEZER
ROOM

STRIP CURTAIN

A photograph of a large warehouse interior. In the foreground, several workers wearing high-visibility yellow safety vests and hard hats are standing. One worker on the left is wearing a blue hard hat and a dark shirt. Another worker in the center is wearing a blue hard hat and a dark shirt. A third worker on the right is wearing a grey hard hat and a dark shirt. They are standing in a wide aisle between tall metal shelving units filled with cardboard boxes. The ceiling is high with industrial lighting. A purple rectangular overlay with yellow text is centered in the image.

BUILDING & GROUND

- LIGHTING
- BUILDING ENVELOPE
- AIR CONDITIONING
- RENEWABLE ENERGY

LIGHTING

NATURAL LIGHT



METAL HALIDE REPLACEMENT



PHOTOCELL & OCCUPANCY SENSOR

ZONING

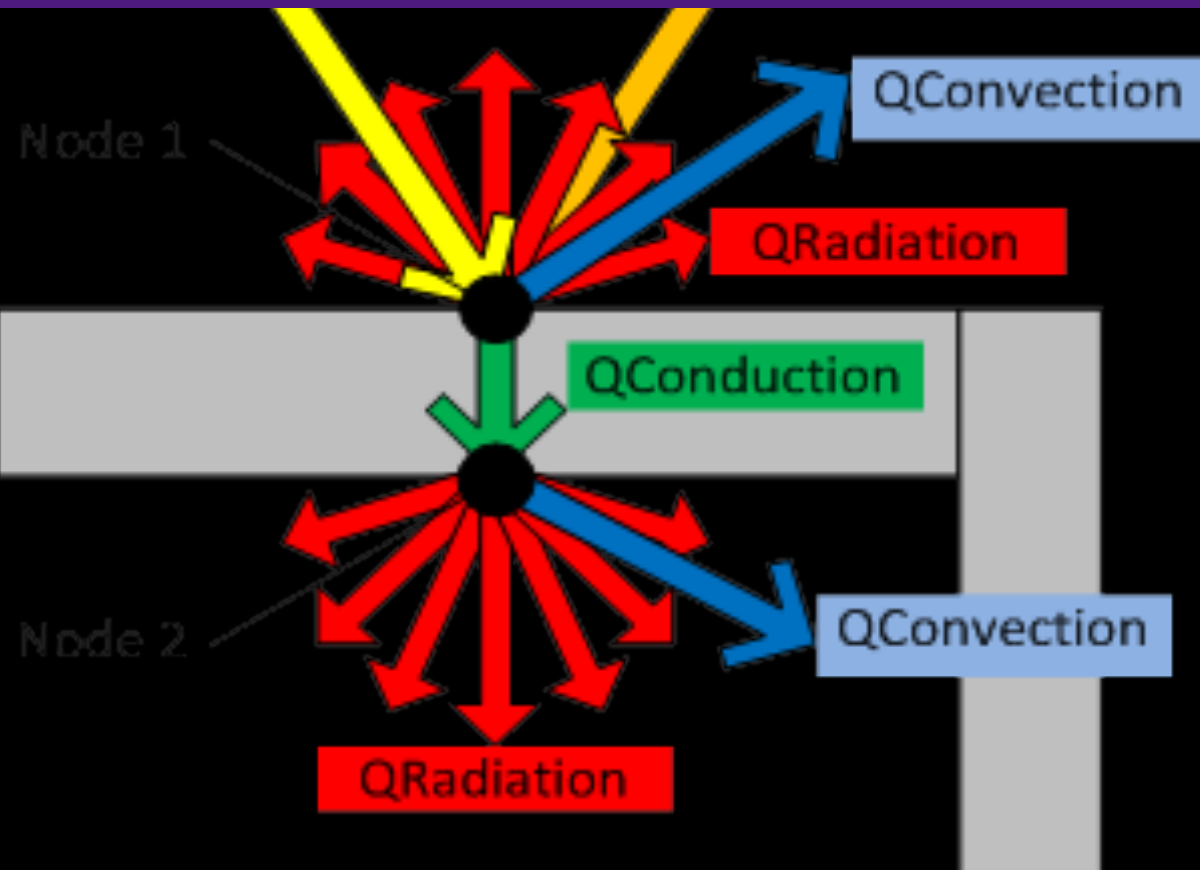


AIR CONDITIONING



PROGRAMMABLE THERMOSTAT BUILDING ENVELOPE TIGHTNESS

WHITE ROOF



SOLAR PANEL

System Capacity: 256.6 kWdc (1711 m²)



METHANE GENERATION



ROOF &
RENEWABLE
ENERGY

ADMINISTRATIVE CONTROL

- UNDERSTAND BILLS AND INCENTIVE
- CHARGING SCHEDULE
- ROUTINE MAINTENANCE
- TURN OFF EQUIPMENT WHEN NOT IN USE
- SEE SOMETHING SAY SOMETHING



BILL AND INCENTIVE CHARGING SCHEDULE

Account Detail

Previous Balance		8,852.85
Payment Received	(07/25/2017)	-8,852.85
Remaining Balance		\$0.00

Current Charges

Demand Charge		1,516.21
Energy Charge		2,363.95
Formula Rate Plan	@ -10.5278%	-408.50
Storm Securitization Cost Riders		154.07
MISO Recovery Rider	@ 5.2241%	202.70
Capacity Acquisition Cost Rider	84800 kWh @ \$0.007758	657.88
Fuel & Purchased Power Cost	84800 kWh @ \$0.035713	3,028.46
Federal Mandated EAC Rider	84800 kWh @ \$0.000001	0.08
Street Use Franchise Fee		395.52
Total Metered Charges (Contract 13233398)		\$7,910.37

Lighting Charges



ROUTINE MAINTENANCE

TURN OFF EQUIPMENT WHEN NOT IN USE

Chao Wang, Ph.D
Assistant Director, LSU-IAC
Email: chaowang@lsu.edu
Tel: 225-578-9178



Apply Today!

