

Resource Summit: Water Quality

The purpose of the Water Quality resource summit was to gain insight and additional information about water quality as a restoration priority. Three expert presenters provided outlooks for water quality in Mississippi.

Those presenters were:

1. Natalie Segrest – Chief Basin Coordinator, Mississippi Department of Environmental Quality
2. Richard Ingram – Associate Director, Mississippi Water Resources Research Institute, Mississippi State University
3. Matt Hicks – Research Ecologist, United States Geological Survey

High level questions posed:

1. What are the primary water quality problems on the Mississippi Gulf Coast?
2. Where are these water quality problems most prevalent?

The Audience:

- Gulfport, Harrison County
- Total: 55 individuals
- Representing 25 organizations
- 11 scientists
- Two academic institutions
- Two state agencies
- One federal agency

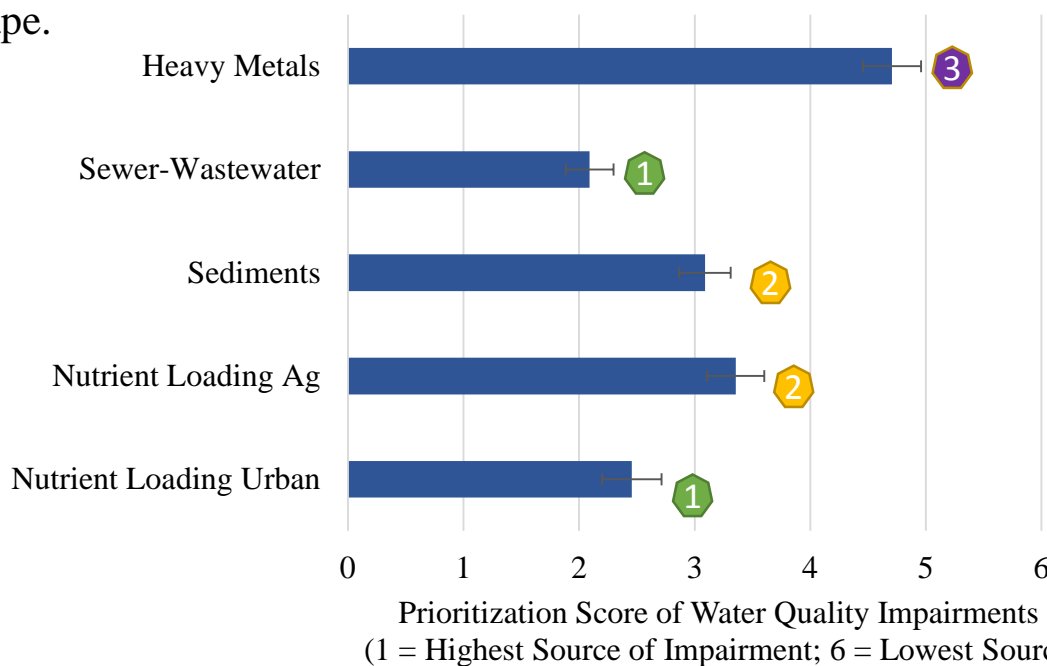


Photo Credit: Department of Leisure Services, Gulfport, MS

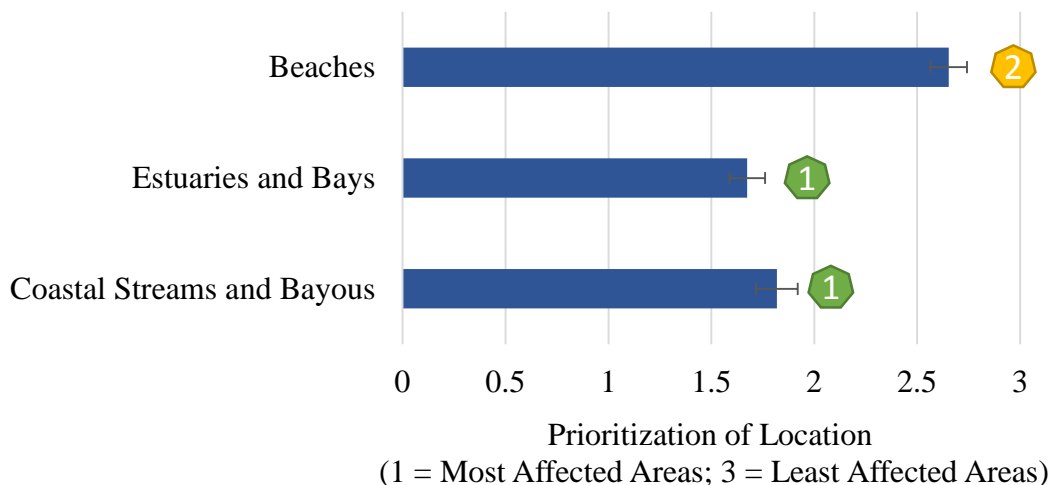


Resource Summit: Water Quality

Participants ranked sewer/wastewater and nutrient loading from the urban environment as the top threats to Water Quality in the Mississippi Coastal Landscape.



Those threats were most prominent in estuaries and bays, and coastal streams and bayous.





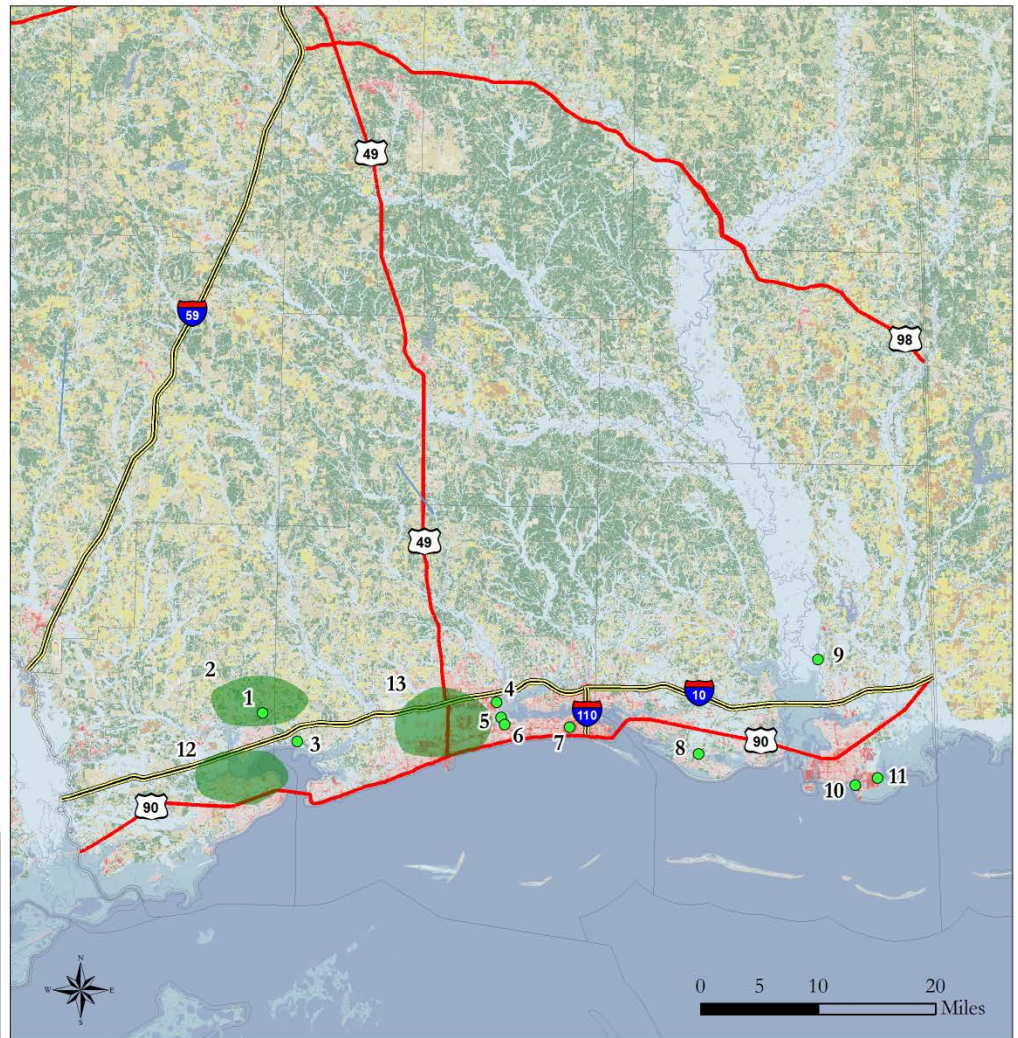
Resource Summit: Water Quality

Resource Summit Notes Water Quality

Key

1. Stormwater runoff
2. Sedimentation
3. Deep well injection
4. Watson Plant, source of Hg, sediments, waste piles
5. Gulfport N. & S. sewer plants need upgrades or tie ins together
6. [see above]
7. KAFB runoff
8. Sewage issues
9. Coal fired power plant
10. Heavy industry
11. Gypsum piles; Bangs Lake disaster from gypsum storage
12. Septic issues
13. Urban runoff

This map produced by The Geospatial Group, a member of the CCE Team, on 23, April 2015.
 All map data is from the CCE Team, Mississippi Geospatial Clearinghouse, and Esri.
 Coordinate System: NAD 1983 CORS96 UTM Zone 16N
 Projection: Transverse Mercator
 The CCE Team makes no warranties, expressed or implied, as to the accuracy, completeness, currentness, reliability, or suitability for any particular purpose, of the data contained on this map.



Esri, HERE, DeLorme, MapmyIndia, © OpenStreetMap contributors,

Visual outcomes of water quality discussion priorities on the Mississippi coastal landscape.