



MISSISSIPPI DEPARTMENT OF ENVIRONMENTAL QUALITY

FACT SHEET

Equalization Lagoon Closure Grenada Manufacturing, LLC Grenada, Mississippi

Number 1

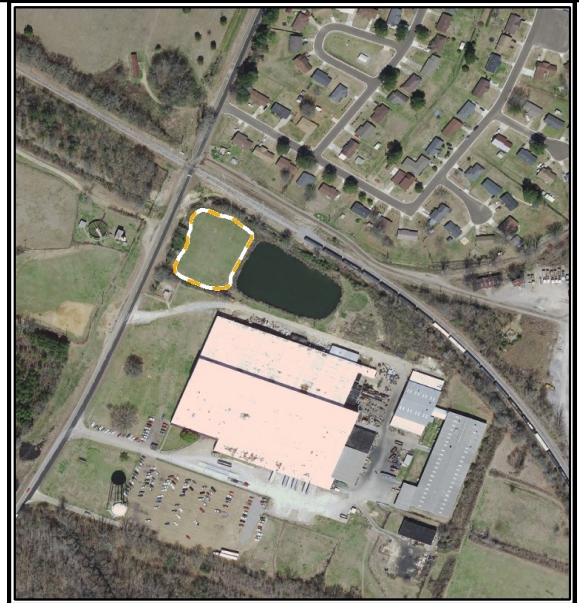
January 2016

SITE HISTORY

The Grenada Manufacturing facility was constructed by Lyon Industries in 1961 and sold to Rockwell International Corporation in 1966. Textron purchased the facility in 1984 and operated the facility until 1999 when it was sold to local management which operated as Grenada Manufacturing LLC. Grenada Manufacturing LLC is the current RCRA permit holder and is responsible for maintaining compliance with the conditions established by the Resource Conservation and Recovery Act (RCRA) "Post-Closure" Permit issued by the MDEQ in 2009.

EQUALIZATION LAGOON

The former Equalization Lagoon (SWMU 2), located northwest of the main plant building, was closed under MDEQ jurisdiction as a regulated unit in 1994. Prior to 1991, the Equalization Lagoon received process wastewater flows from the roll-forming department, boiler blowdown, boil-off, butler wash, buff wash, alkaline rinse water, and cooling waters. After 1991, wastewater was routed directly to the facility's wastewater treatment plant.



Aerial Photograph of the RCRA regulated unit (grassy area west of pond).

Post Closure Permit Status

RCRA permits are issued for 10 years. In 1998 Mississippi issued the original Hazardous Waste Management Post Closure Permit. It is called a "Post Closure" permit because it addresses maintenance and monitoring of the closed equalization lagoon only. The current Post Closure Permit was renewed in June 2009 and will expire May 31, 2019. Together with EPA's HSWA Permit addressing site-wide corrective action, the two permits are called the RCRA Permit for the entire facility.

CLOSURE ACTIVITIES

In 1991, MDEQ issued an Administrative Order requiring a RCRA Permit for the equalization lagoon (Lagoon). Mississippi required Textron to close the equalization lagoon in an engineered landfill cell (or impoundment) designed by a Professional Engineer. The Lagoon was drained, and the resulting wastewater was sent to the wastewater treatment plant prior to discharge. The sludge and underlying soils were excavated, dewatered, and staged on the eastern side of the Lagoon footprint. An engineered plastic liner was then constructed within the western portion of the Lagoon and the consolidated sludge and underlying soil mixture was placed within the lined area. An engineered plastic landfill cover system was placed on top, encapsulating the waste material. Lastly, the eastern side of the Landfill footprint was backfilled with one foot of clean clay material, and the eastern portion of the former Lagoon was allowed to be reclaimed as a pond. Currently, the pond is not used as part of any industrial processes at the facility.

POST-CLOSURE CARE & MONITORING

The post-closure permit requires groundwater monitoring, long-term maintenance of the impoundment, a guarantee should the impoundment not be maintained (i.e., financial assurance), and restrictions on the use of the encapsulated area.

Four shallow monitoring wells in the vicinity of the closed Equalization Lagoon have been sampled twice a year to evaluate the effectiveness of the Lagoon closure over time. The data from these wells indicate that the encapsulated waste material does not appear to be a significant source of continued groundwater contamination at this time. In addition, the closed lagoon continues to be adequately maintained at this time.



Installation of plastic cap during closure of the Equalization Lagoon in 1993



FOR MORE INFORMATION:

MDEQ, P.O. Box 2261, Jackson, MS 39225

Melissa McGee-Collier, Office of Community Engagement, (601) 961-5025 or Melissa_Collier@deq.state.ms.us