

Project: Groundwater Assessment

Location: Crystal Springs, MS

Client: BorgWarner, Inc.

Reviewed By: S. Spinner

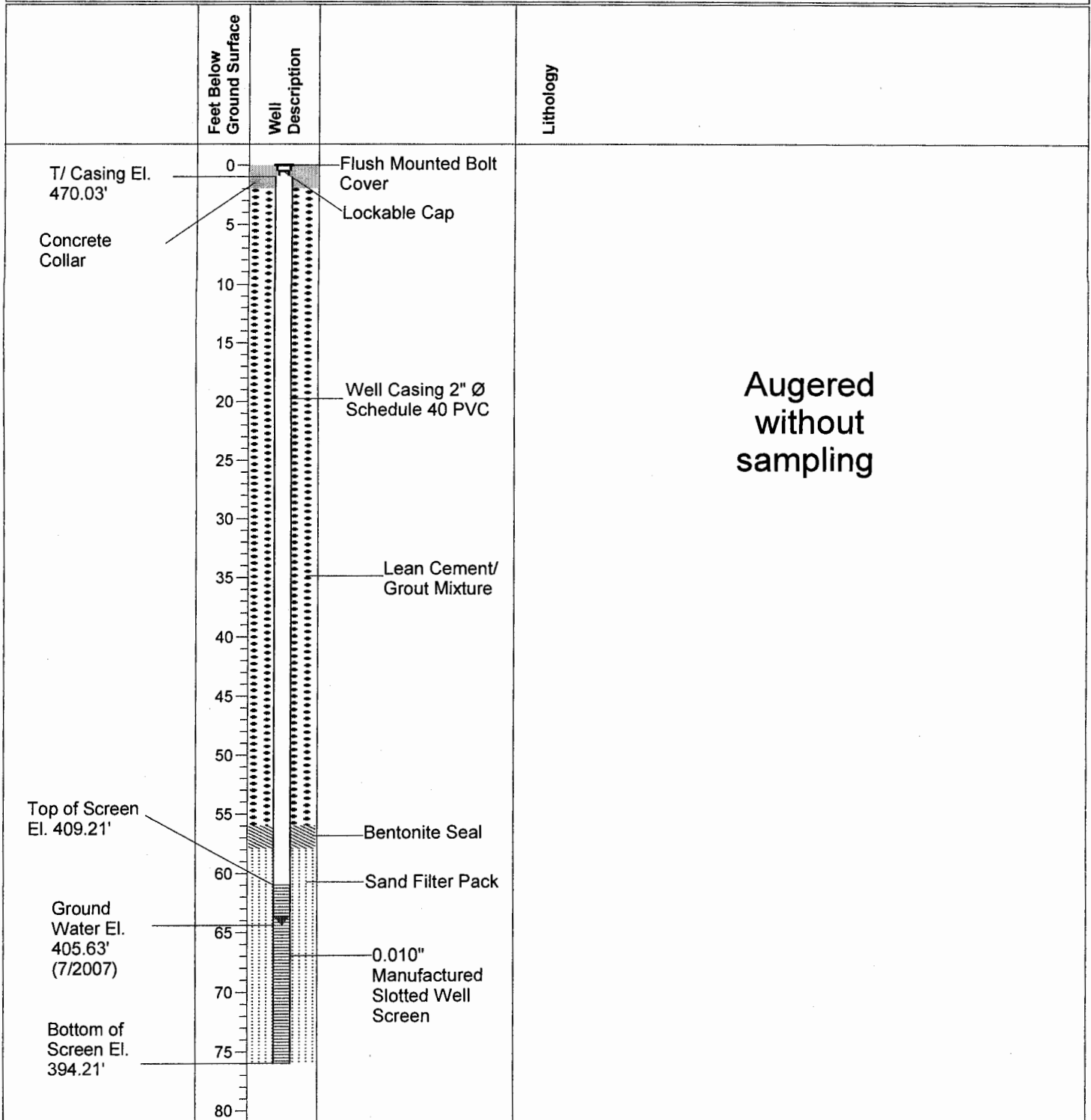
Well Number: MW-9

Coordinates: E- 2289234.47

N- 905266.08

Ground Surface: 470.21

Logged By: Robert Martin



Drilling Contractor: Walker-Hill Environmental, Inc.

Drilling Method: Rotary Auger/Mud Auger

Drilling Equipment: Rotary Auger

Drilling Started: 3/3/2005

Drilling Ended: 3/3/2005

Project: Groundwater Assessment

Location: Crystal Springs, MS

Client: BorgWarner, Inc.

Reviewed By: S. Spinner

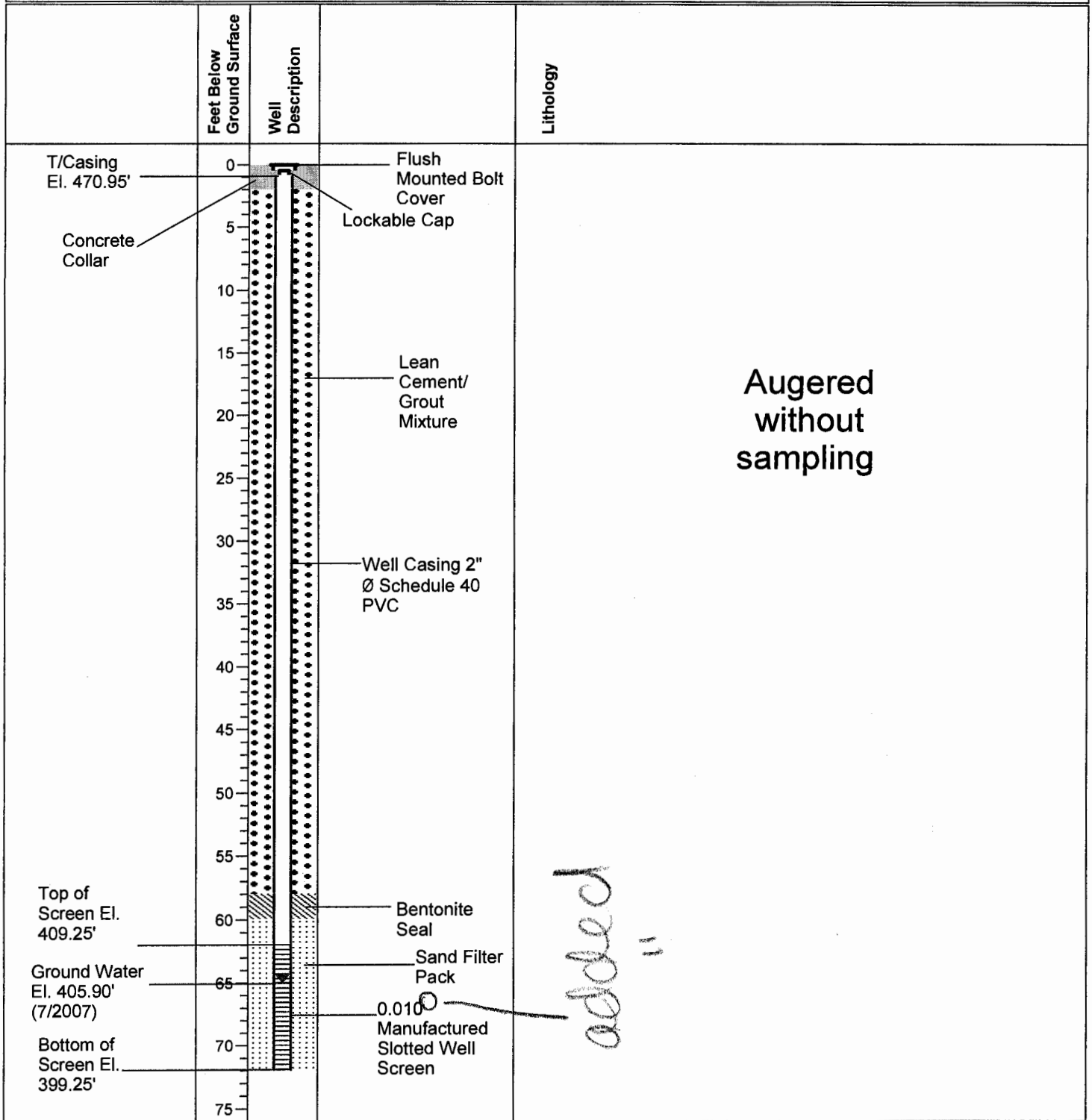
Well Number: MW-10A

Coordinates: E- 2289297.51

N- 905573.51

Ground Surface: 471.25

Logged By: Robert Martin



Drilling Contractor: Walker-Hill Engineering, Inc

Drilling Method: Rotary Auger/Mud Rotary

Drilling Equipment: Rotary Auger

Drilling Started: 7/7/2007

Drilling Ended: 7/7/2007

Project: Groundwater Assessment

Location: Crystal Springs, MS

Client: BorgWarner, Inc.

Reviewed By: S. Spinner

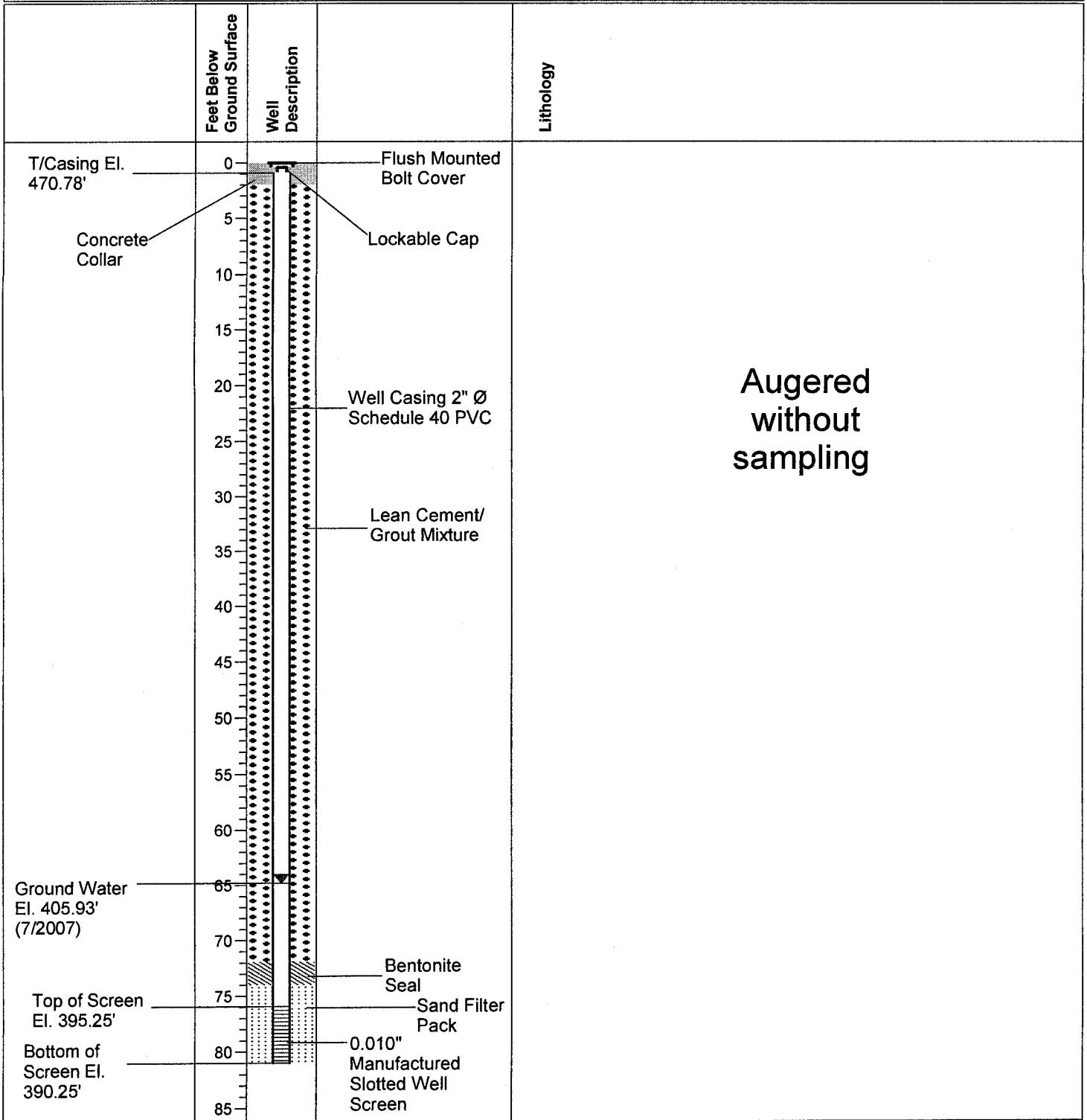
Well Number: MW-10B

Coordinates: E- 2289309.51

N- 905605.33

Ground Surface: 471.25

Logged By: Chuck Peel



Drilling Contractor: Walker-Hill Environmental, Inc.

Drilling Method: Rotary Auger & Mud Auger

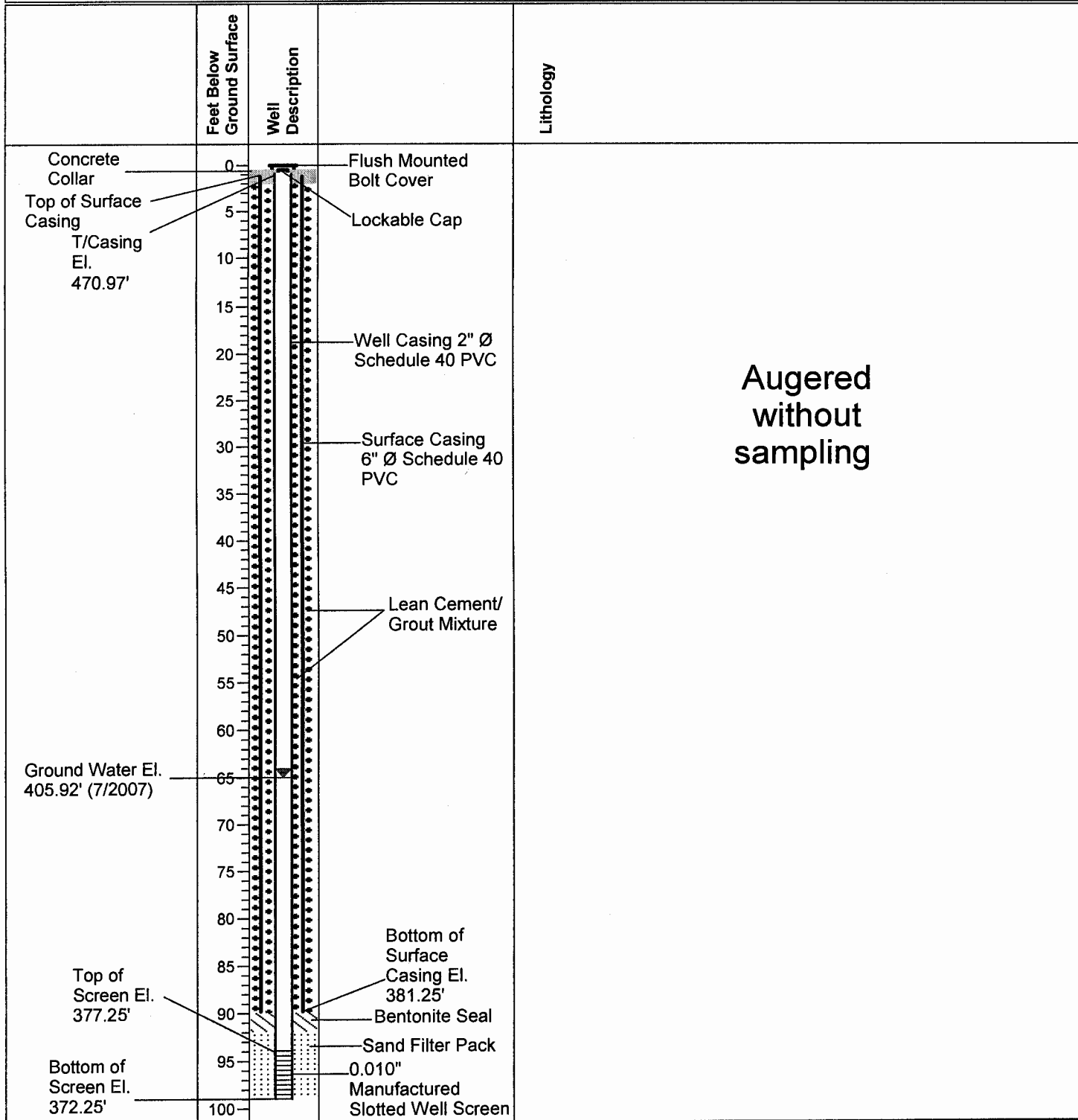
Drilling Equipment: Rotary Auger

Drilling Started: 7/7/2007

Drilling Ended: 7/7/2007

Project: Groundwater Assessment
Location: Crystal Springs, MS
Client: BorgWarner, Inc.
Reviewed By: S. Spinner

Well Number: MW-10C
Coordinates: E- 2289301.89 N- 905589.90
Ground Surface: 471.25
Logged By: Robert Martin



Drilling Contractor: Walker-Hill Environmental, Inc
Drilling Method: Rotary Auger/Mud Rotary
Drilling Equipment: Rotary Auger
Drilling Started: 7/10/2007
Drilling Ended: 7/17/2007

Project: Groundwater Assessment

Location: Crystal Springs, MS

Client: BorgWarner, Inc.

Reviewed By:

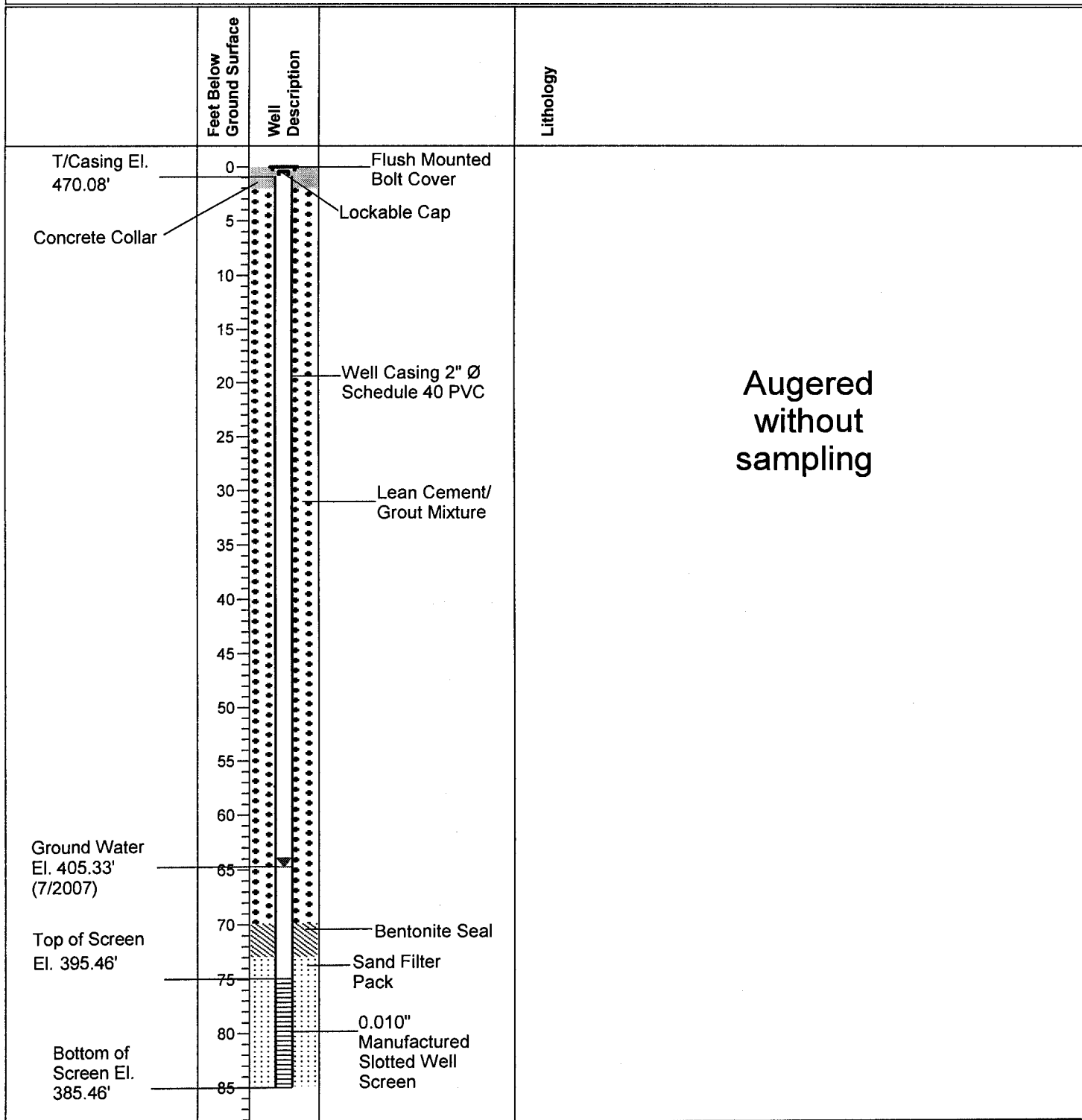
Well Number: MW-11A

Coordinates: E- 2288964.05

N- 905338.67

Ground Surface: 470.46

Logged By: Chuck Peel



Drilling Contractor: Walker-Hill Environmental, Inc.

Drilling Method: Rotary Auger & Mud Auger

Drilling Equipment: Rotary Auger

Drilling Started: 7/5/2007

Drilling Ended: 7/5/2007

Project: Groundwater Assessment

Location: Crystal Springs, MS

Client: BorgWarner, Inc.

Reviewed By:

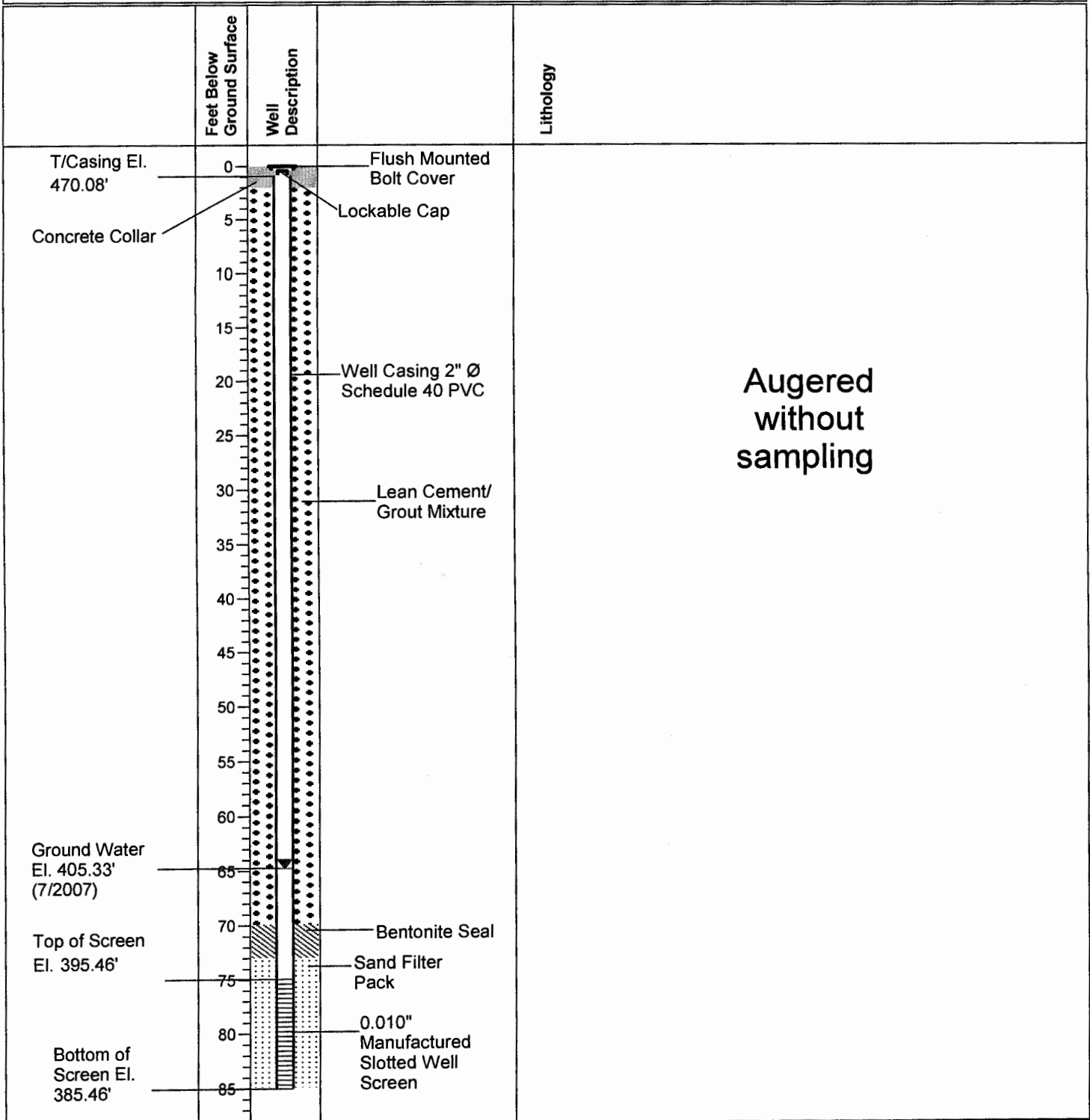
Well Number: MW-11A

Coordinates: E- 2288964.05

N- 905338.67

Ground Surface: 470.46

Logged By: Chuck Peel



Drilling Contractor: Walker-Hill Environmental, Inc.

Drilling Method: Rotary Auger & Mud Auger

Drilling Equipment: Rotary Auger

Drilling Started: 7/5/2007

Drilling Ended: 7/5/2007

Project: Groundwater Assessment

Location: Crystal Springs, MS

Client: BorgWarner, Inc.

Reviewed By: S. Spinner

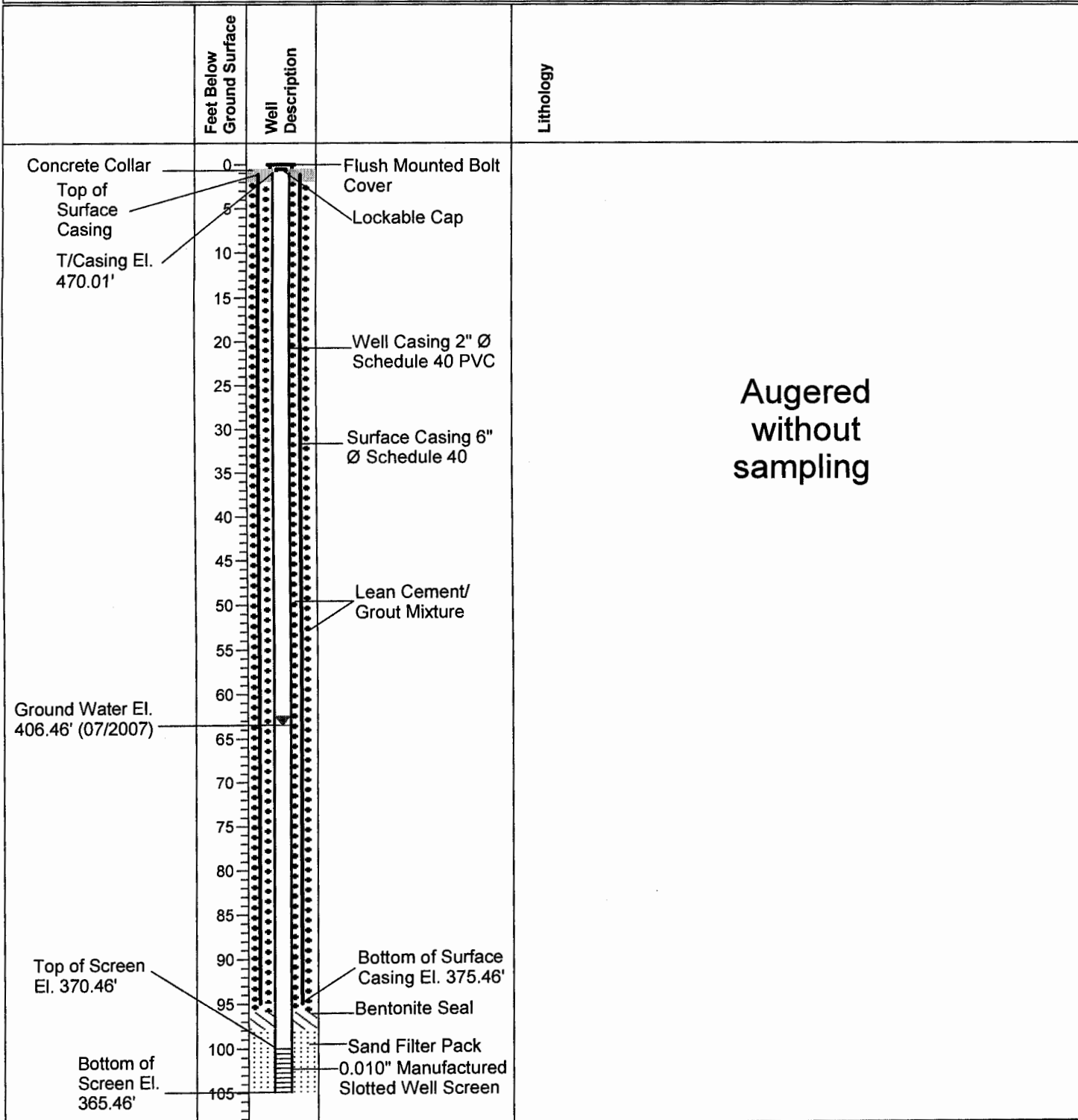
Well Number: MW-11B

Coordinates: E- 2288957.27

N- 905341.65

Ground Surface: 470.46

Logged By: Chuck Peel



Drilling Contractor: Walker-Hill Environmental, Inc.

Drilling Method: Rotary Auger & Mud Auger

Drilling Equipment: Rotary Auger

Drilling Started: 7/9/2007

Drilling Ended: 7/18/2007

Project: Groundwater Assessment

Location: Crystal Springs, MS

Client: BorgWarner, Inc.

Reviewed By: S. Spinner

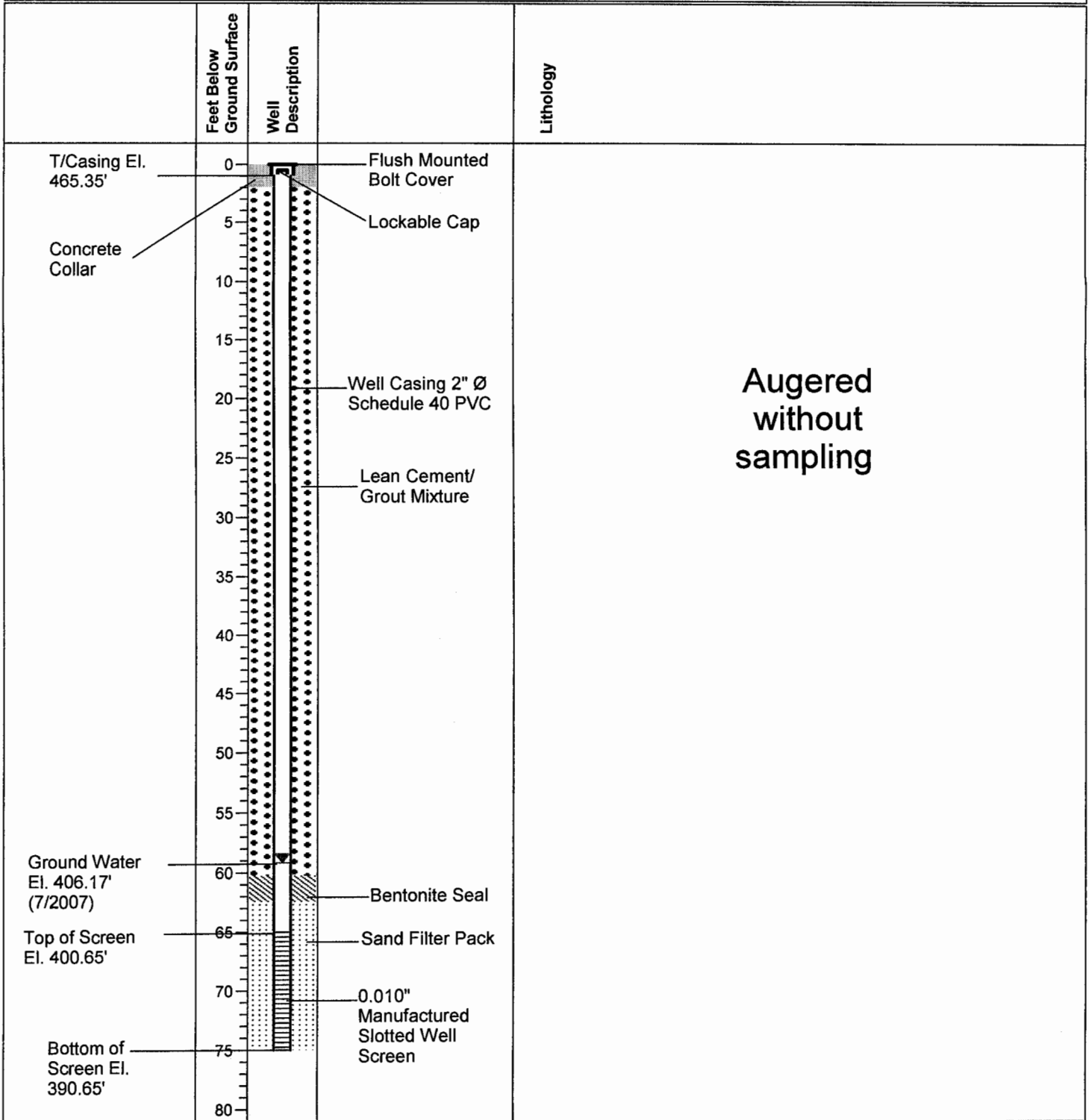
Well Number: MW-12

Coordinates: E- 2289400.57

N- 906172.27

Ground Surface: 465.66

Logged By: Chuck Peel



Drilling Contractor: Walker-Hill Environmental, Inc.

Drilling Method: Rotary Auger & Mud Auger

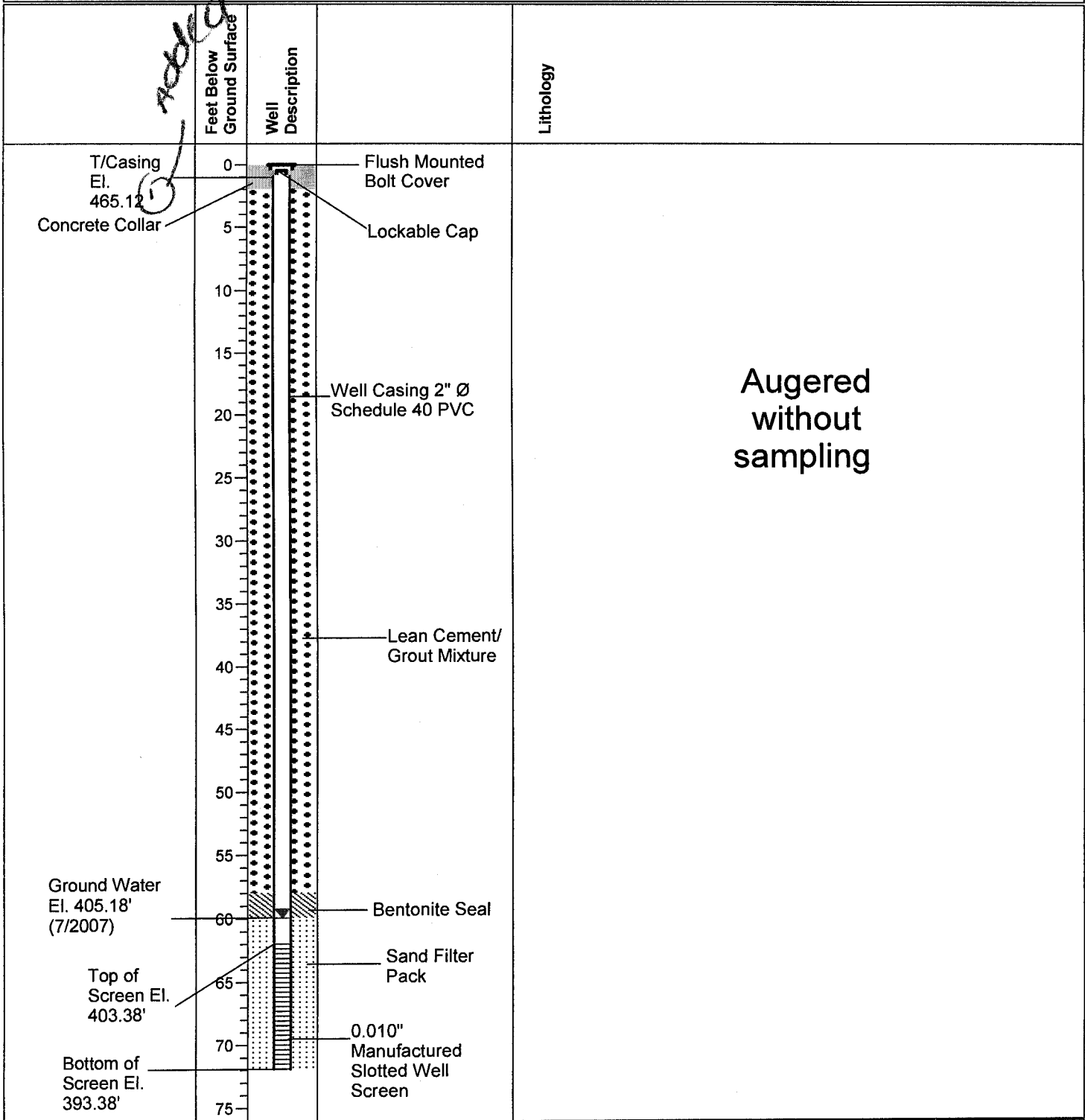
Drilling Equipment: Rotary Auger

Drilling Started: 6/4/2007

Drilling Ended: 6/4/2007

Project: Groundwater Assessment
Location: Crystal Springs, MS
Client: BorgWarner, Inc.
Reviewed By: S. Spinner

Well Number: MW-13
Coordinates: E- 2289570.85 N- 905167.38
Ground Surface: 465.38
Logged By: Chuck Peel



Drilling Contractor: Walker-Hill Environmental, Inc.
Drilling Method: Rotary Auger & Mud Auger
Drilling Equipment: Rotary Auger
Drilling Started: 7/7/2007
Drilling Ended: 7/7/2007

Project: Groundwater Assessment

Location: Crystal Springs, MS

Client: BorgWarner, Inc.

Reviewed By: S. Spinner

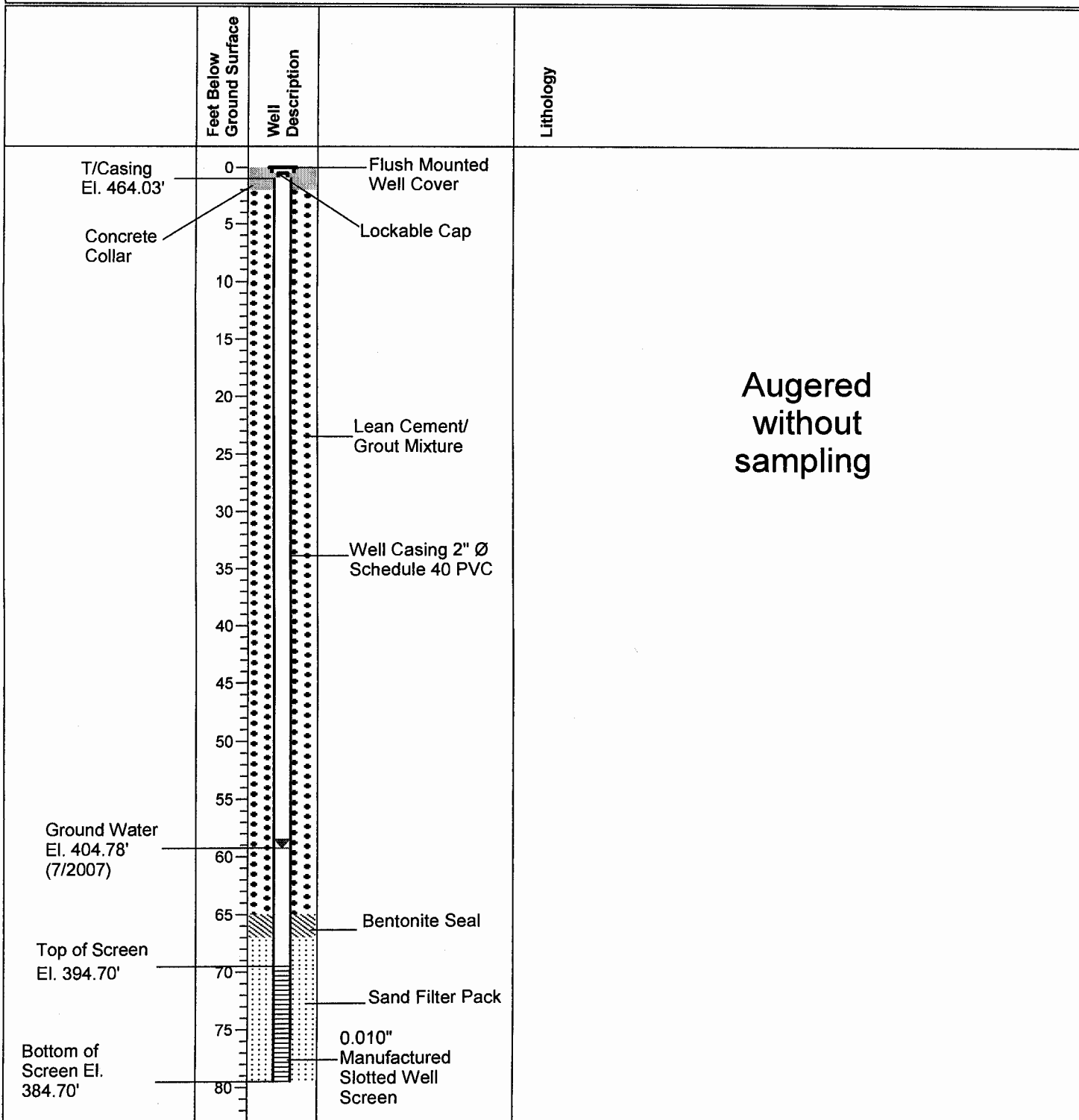
Well Number: MW-14A

Coordinates: E- 228892.25

N- 904792.79

Ground Surface: 464.20

Logged By: Chuck Peel



Drilling Contractor: Walker-Hill Environmental, Inc.

Drilling Method: Rotary Auger & Mud Auger

Drilling Equipment: Rotary Auger

Drilling Started: 6/8/2007

Drilling Ended: 6/8/2007

Project: Groundwater Assessment

Location: Crystal Springs, MS

Client: BorgWarner, Inc.

Reviewed By: S. Spinner

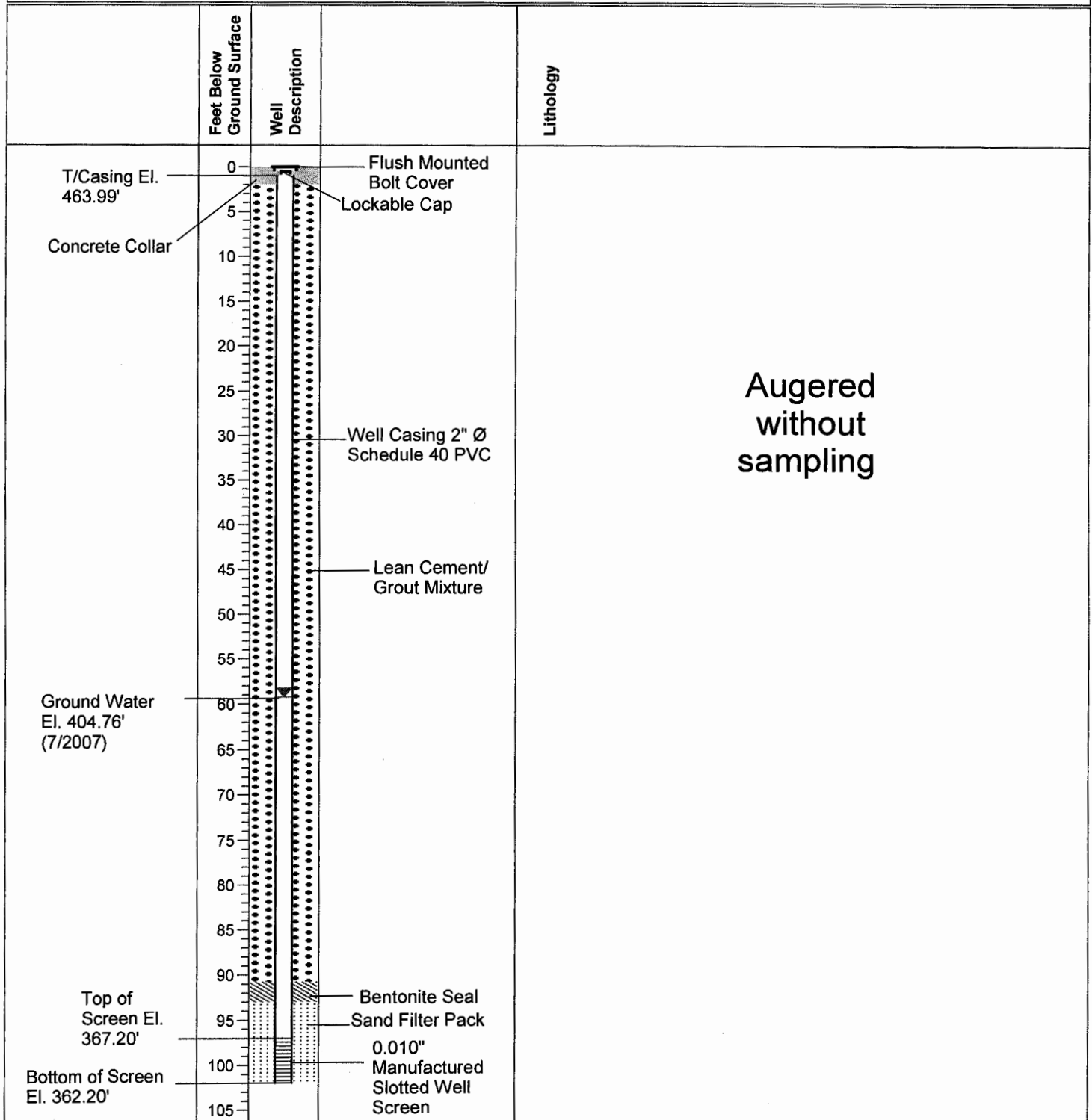
Well Number: MW-14B

Coordinates: E- 2288921.69

N- 904795.11

Ground Surface: 464.20

Logged By: Chuck Peel



Drilling Contractor: Walker-Hill Environmental, Inc.

Drilling Method: Rotary Auger & Mud Auger

Drilling Equipment: Rotary Auger

Drilling Started: 6/11/2007

Drilling Ended: 6/11/2007

Project: Groundwater Assessment

Location: Crystal Springs, MS

Client: BorgWarner, Inc.

Reviewed By: S. Spinner

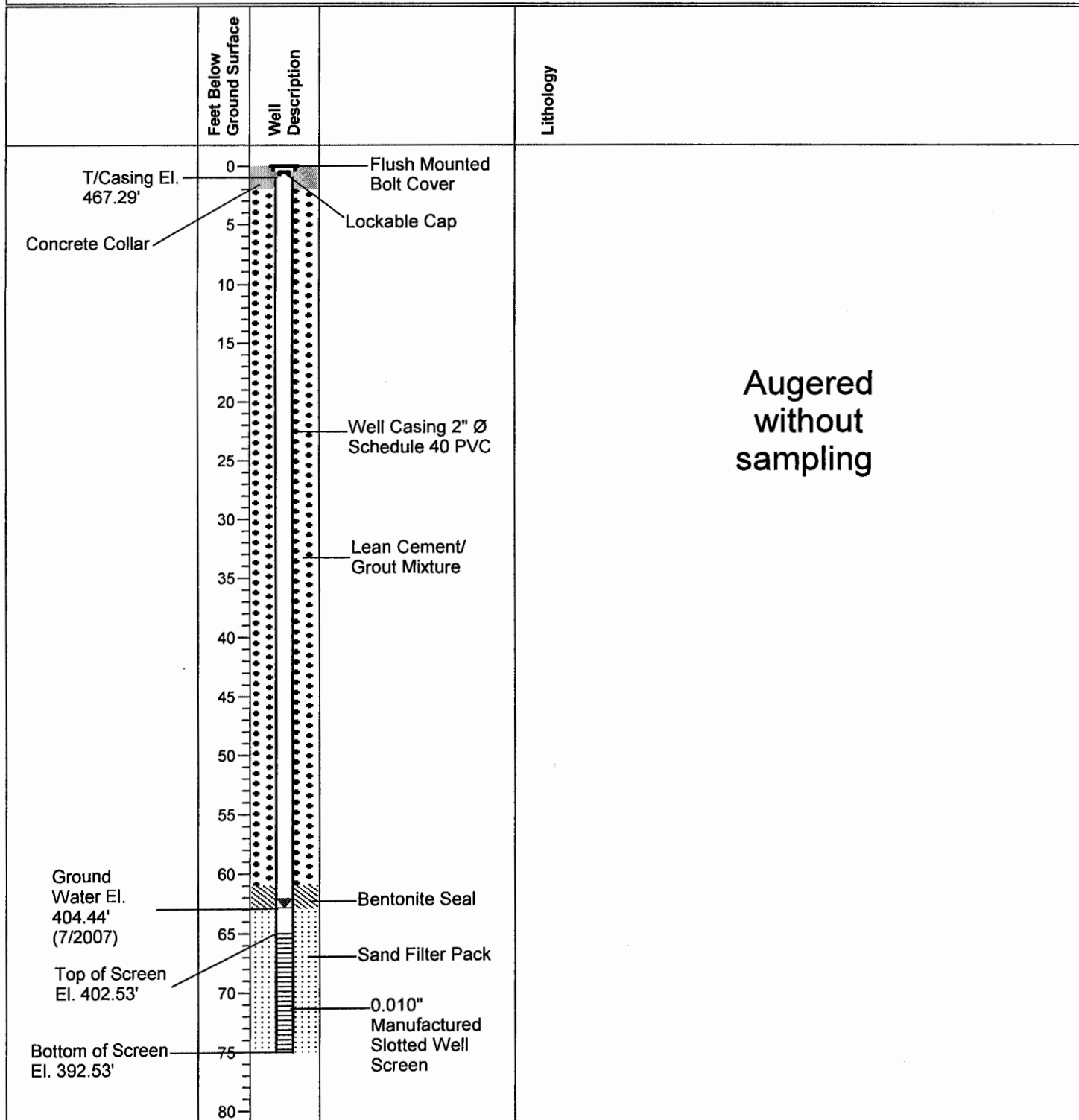
Well Number: MW-15A

Coordinates: E- 2288523.07

N- 905002.74

Ground Surface: 467.53

Logged By: Chuck Peel



Drilling Contractor: Walker-Hill Environmental, Inc.

Drilling Method: Rotary Auger & Mud Auger

Drilling Equipment: Rotary Auger

Drilling Started: 6/18/2007

Drilling Ended: 6/18/2007

Project: Groundwater Assessment

Location: Crystal Springs, MS

Client: BorgWarner, Inc.

Reviewed By: S. Spinner

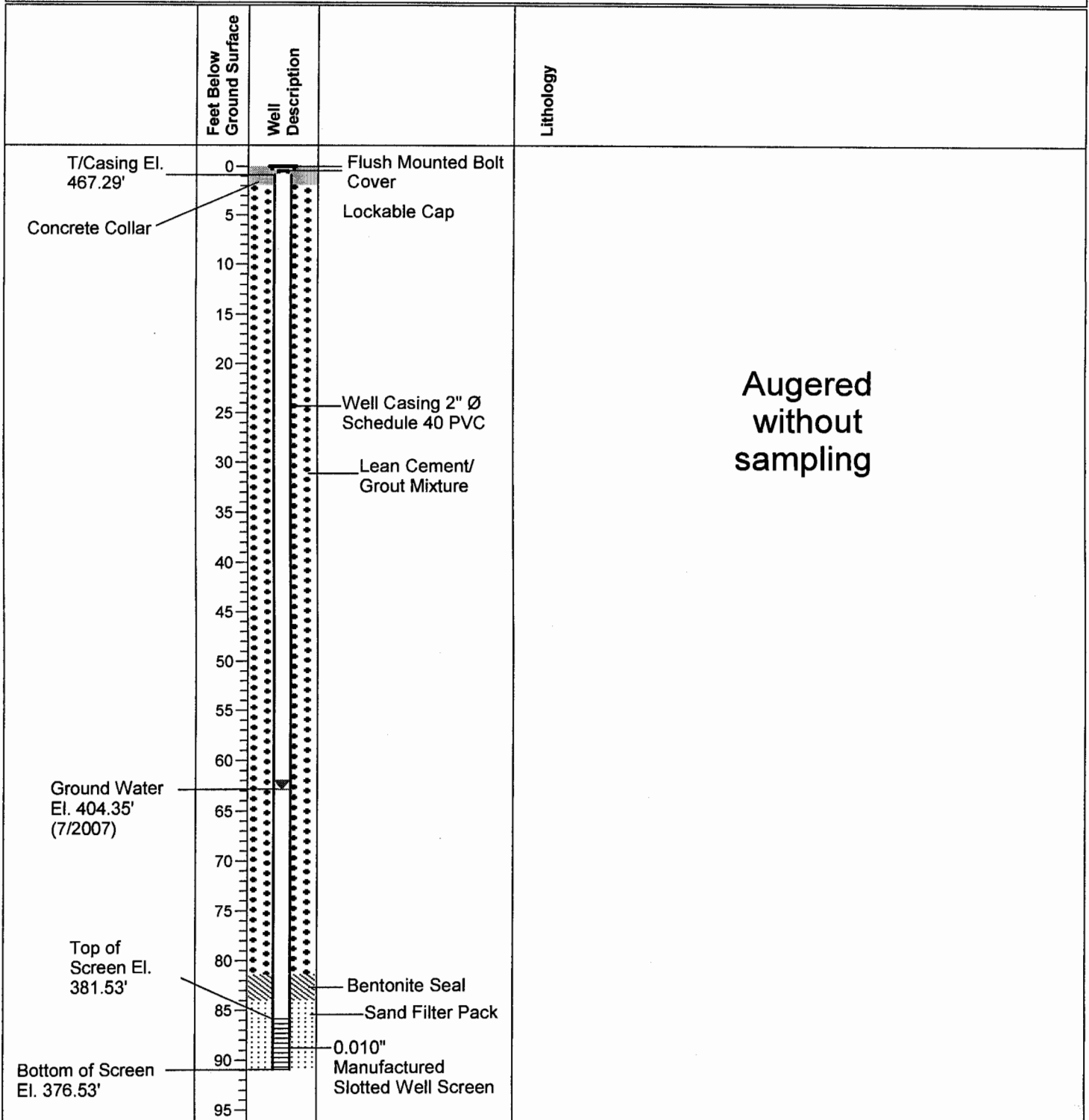
Well Number: MW-15B

Coordinates: E- 2288529.38

N- 905000.05

Ground Surface: 467.53

Logged By: Chuck Peel



Drilling Contractor: Walker-Hill Environmental, Inc.

Drilling Method: Rotary Auger & Mud Auger

Drilling Equipment: Rotary Auger

Drilling Started: 6/20/2007

Drilling Ended: 6/20/2007

Project: Groundwater Assessment

Location: Crystal Springs, MS

Client: BorgWarner, Inc.

Reviewed By: S. Spinner

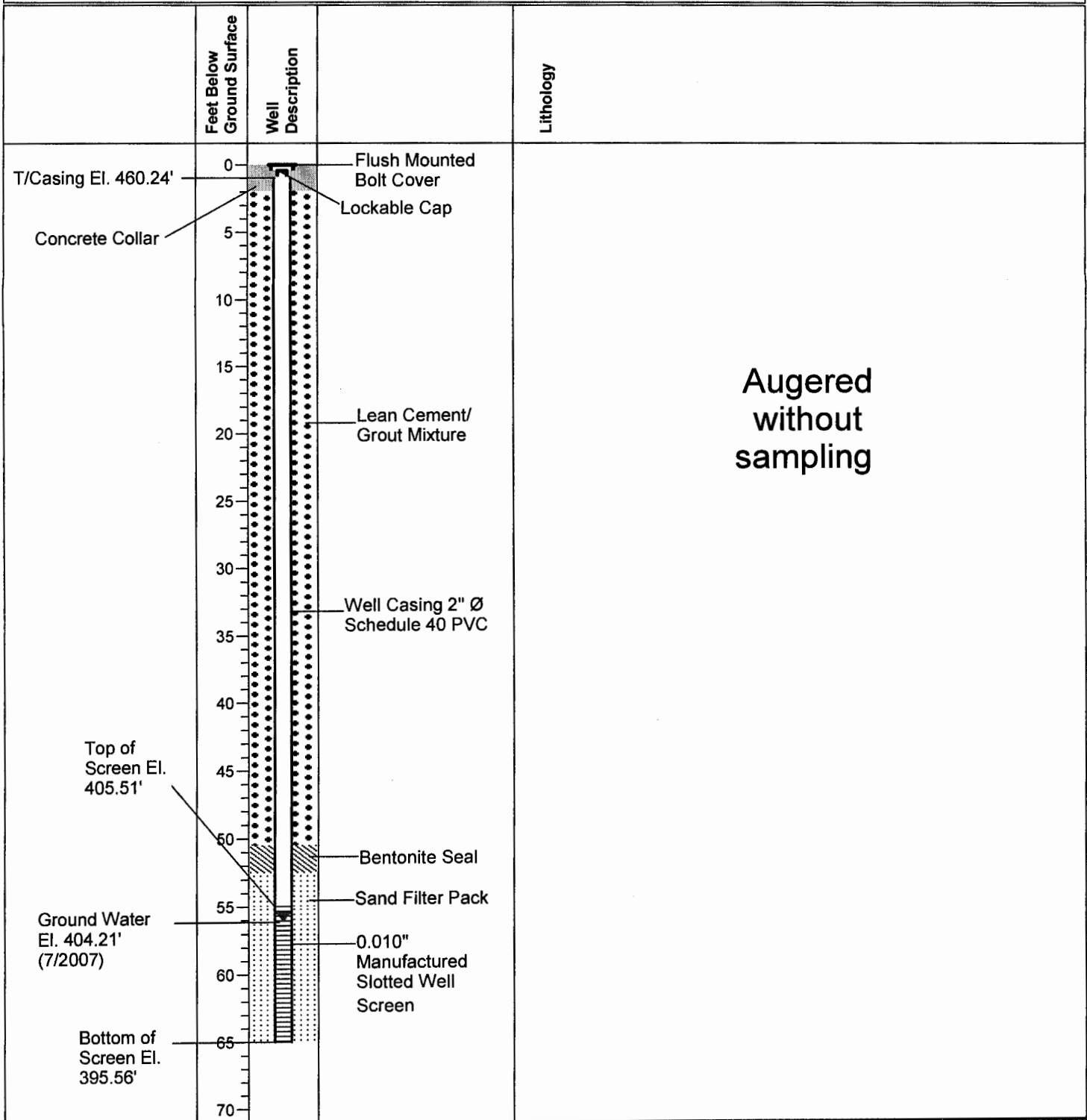
Well Number: MW-16

Coordinates: E- 2288330.26

N- 905631.43

Ground Surface: 460.56

Logged By: Chuck Peel



Drilling Contractor: Walker-Hill Environmental, Inc.

Drilling Method: Rotary Auger & Mud Auger

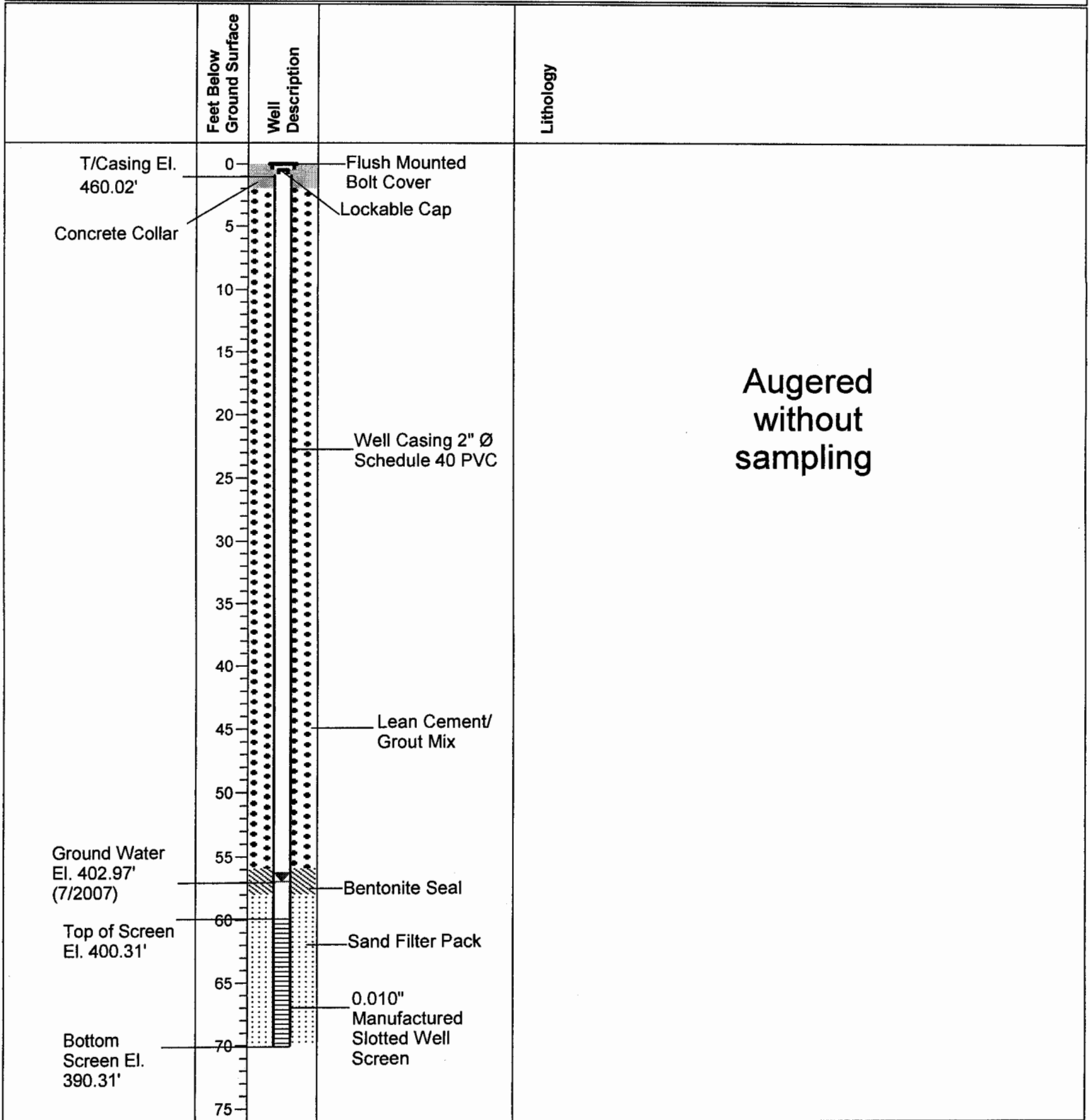
Drilling Equipment: Rotary Auger

Drilling Started: 6/5/2007

Drilling Ended: 6/5/2007

Project: Groundwater Assessment
Location: Crystal Springs, MS
Client: BorgWarner, Inc.
Reviewed By: S. Spinner

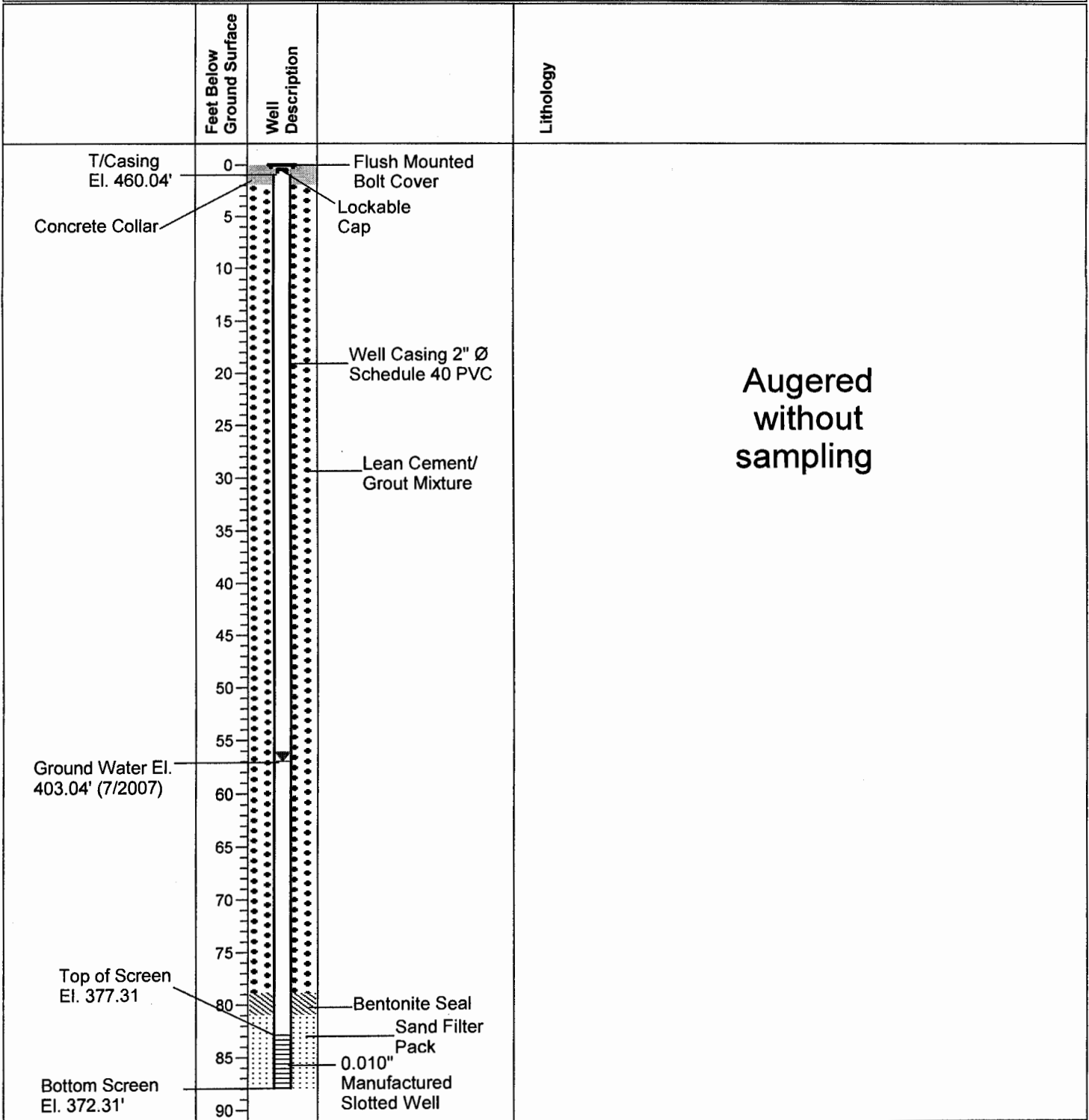
Well Number: MW-17A
Coordinates: E- 2288006.27 N- 905269.12
Ground Surface: 460.31
Logged By: Chuck Peel



Drilling Contractor: Walker-Hill Environmental, Inc.
Drilling Method: Rotary Auger & Mud Auger
Drilling Equipment: Rotary Auger
Drilling Started: 6/28/2007
Drilling Ended: 6/28/2007

Project: Groundwater Assessment
Location: Crystal Springs, MS
Client: BorgWarner, Inc.
Reviewed By: S. Spinner

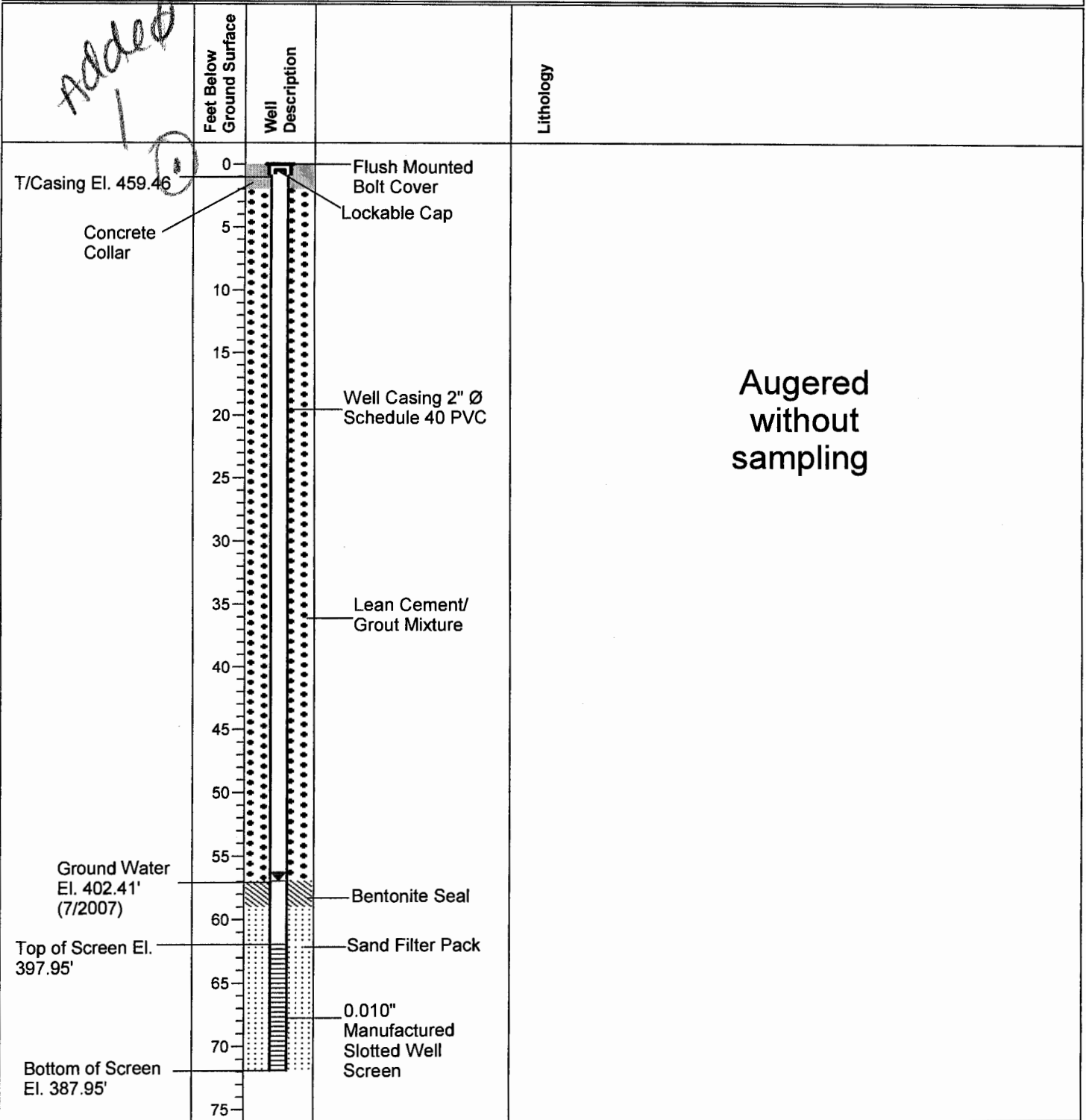
Well Number: MW-17B
Coordinates: E- 2288013.03 N- 905265.88
Ground Surface: 460.31
Logged By: Chuck Peel



Drilling Contractor: Walker-Hill Environmental, Inc.
Drilling Method: Rotary Auger & Mud Auger
Drilling Equipment: Rotary Auger
Drilling Started: 6/28/2007
Drilling Ended: 6/28/2007

Project: Groundwater Assessment
Location: Crystal Springs, MS
Client: BorgWarner, Inc.
Reviewed By: S. Spinner

Well Number: MW-18A
Coordinates: E- 2287234.60 N- 905645.75
Ground Surface: 459.95
Logged By: Chuck Peel



Drilling Contractor: Walker-Hill Environmental, Inc.
Drilling Method: Rotary Auger & Mud Auger
Drilling Equipment: Rotary Auger
Drilling Started: 6/25/2007
Drilling Ended: 6/25/2007

Project: Groundwater Assessment

Location: Crystal Springs, MS

Client: BorgWarner, Inc.

Reviewed By: S. Spinner

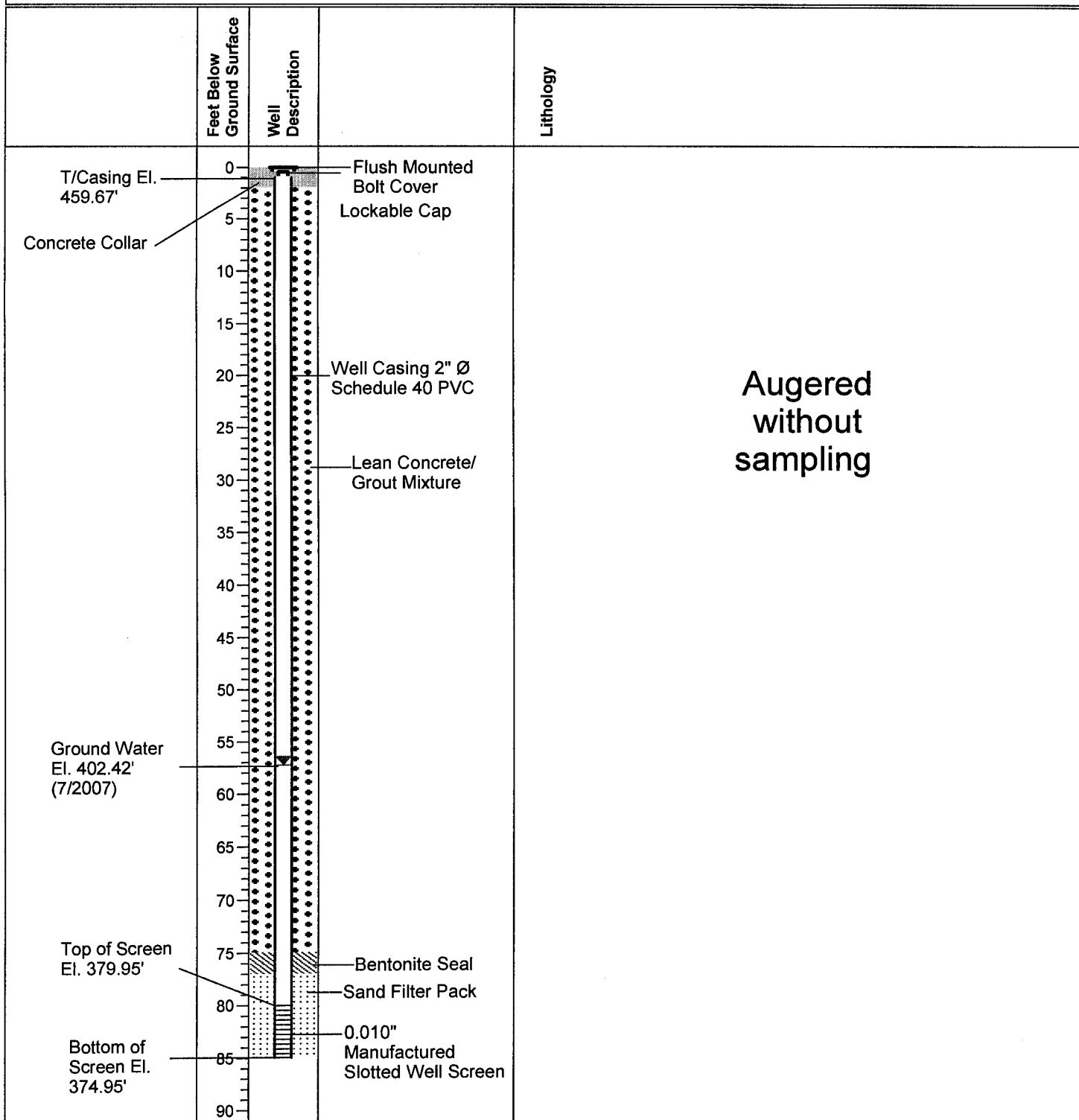
Well Number: MW-18B

Coordinates: E- 2287239.22

N- 905640.98

Ground Surface: 459.95

Logged By: Chuck Peel



Drilling Contractor: Walker-Hill Environmental, Inc.

Drilling Method: Rotary Auger & Mud Auger

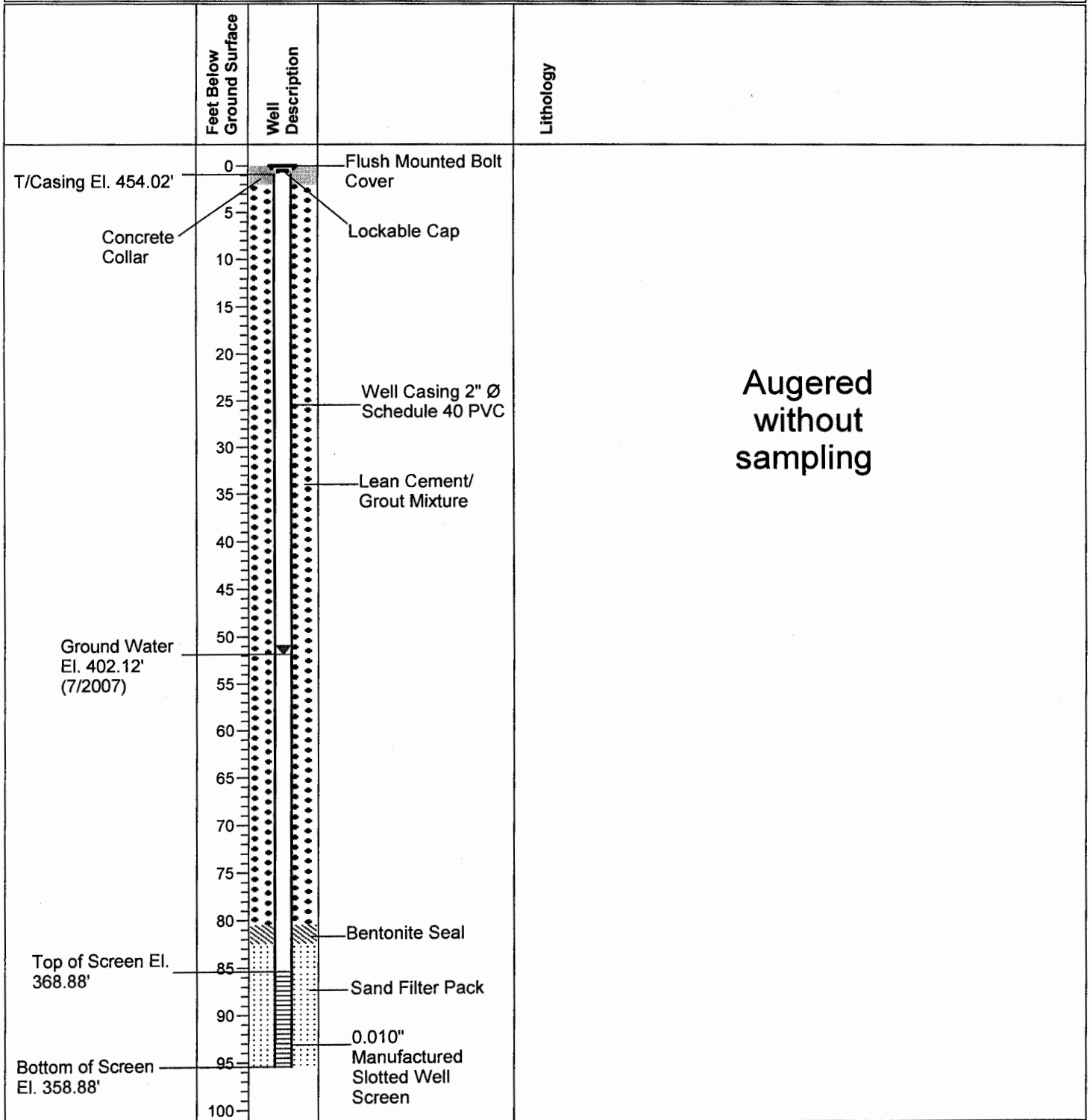
Drilling Equipment: Rotary Auger

Drilling Started: 6/26/2007

Drilling Ended: 6/26/2007

Project: Groundwater Assessment
Location: Crystal Springs, MS
Client: BorgWarner, Inc.
Reviewed By: S. Spinner

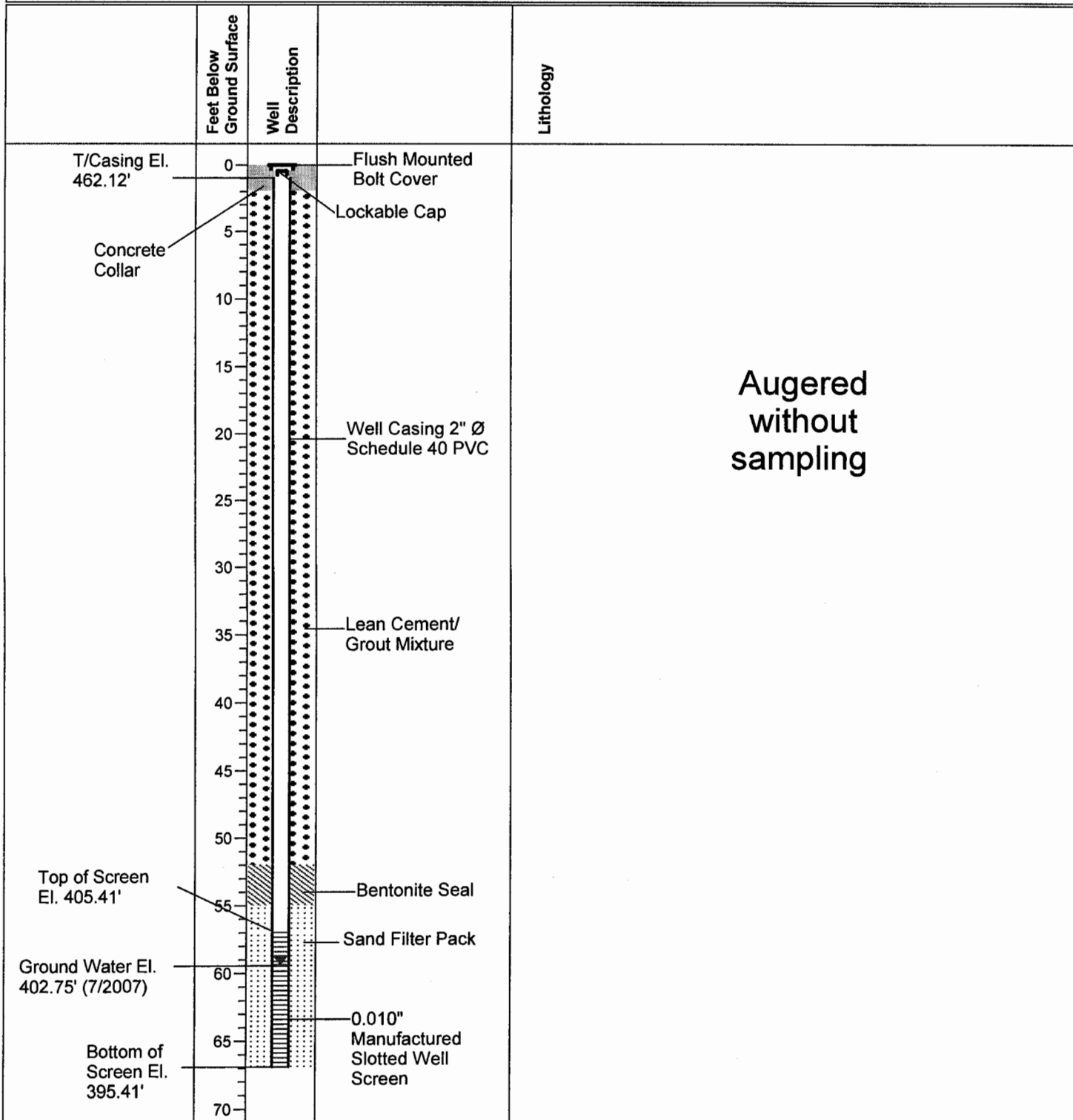
Well Number: MW-19
Coordinates: E- 2286848.43 N- 905960.22
Ground Surface: 454.38
Logged By: Chuck Peel



Drilling Contractor: Walker-Hill Environmental, Inc.
Drilling Method: Rotary Auger & Mud Auger
Drilling Equipment: Rotary Auger
Drilling Started: 6/6/2007
Drilling Ended: 6/6/2007

Project: Groundwater Assessment
Location: Crystal Springs, MS
Client: BorgWarner, Inc.
Reviewed By: S. Spinner

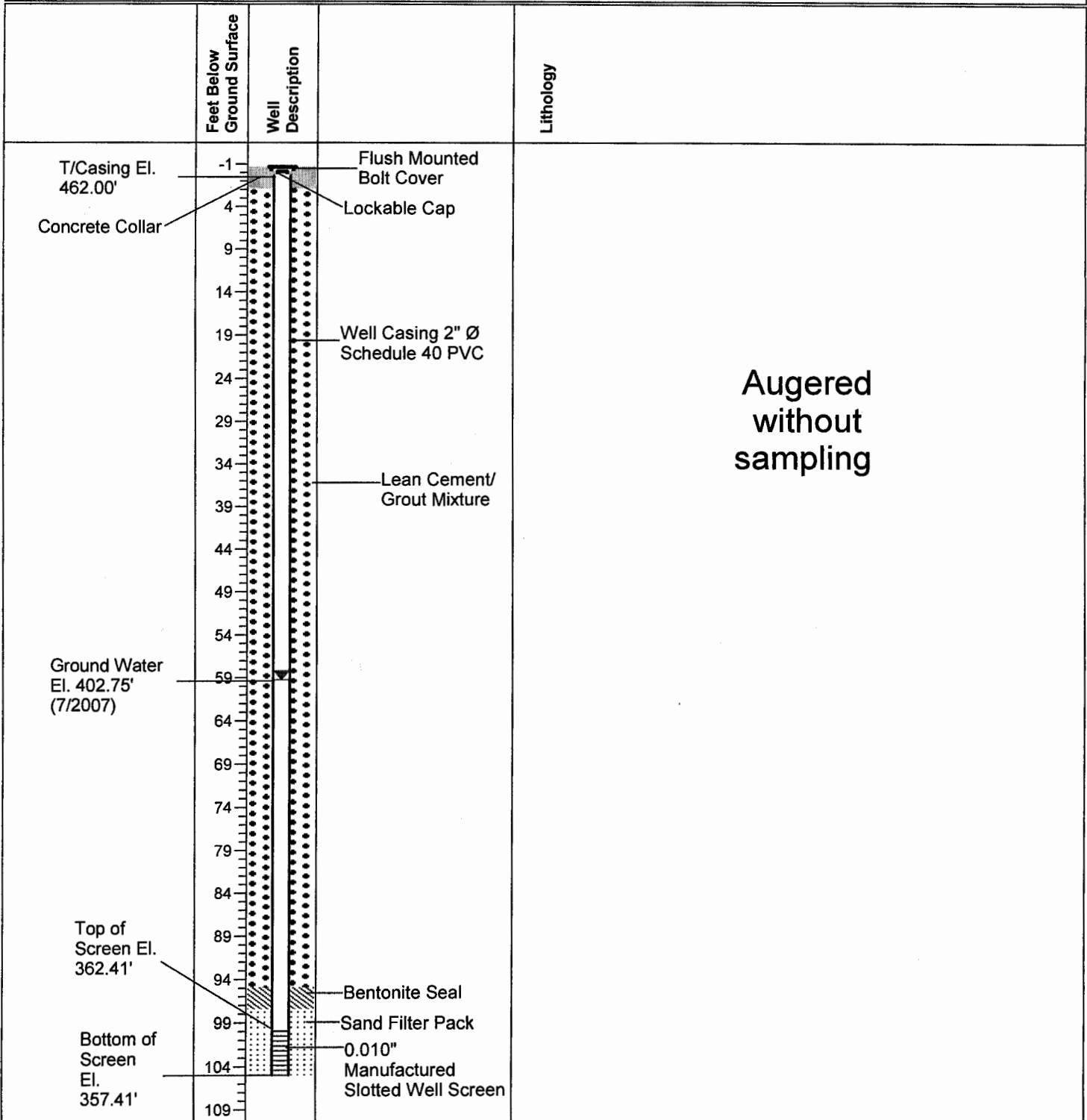
Well Number: MW-20A
Coordinates: E- 2287478.87 N- 904967.37
Ground Surface: 462.41
Logged By: Chuck Peel



Drilling Contractor: Walker-Hill Environmental, Inc.
Drilling Method: Rotary Auger & Mud Auger
Drilling Equipment: Rotary Auger
Drilling Started: 6/22/2007
Drilling Ended: 6/22/2007

Project: Groundwater Assessment
Location: Crystal Springs, MS
Client: BorgWarner, Inc.
Reviewed By: S. Spinner

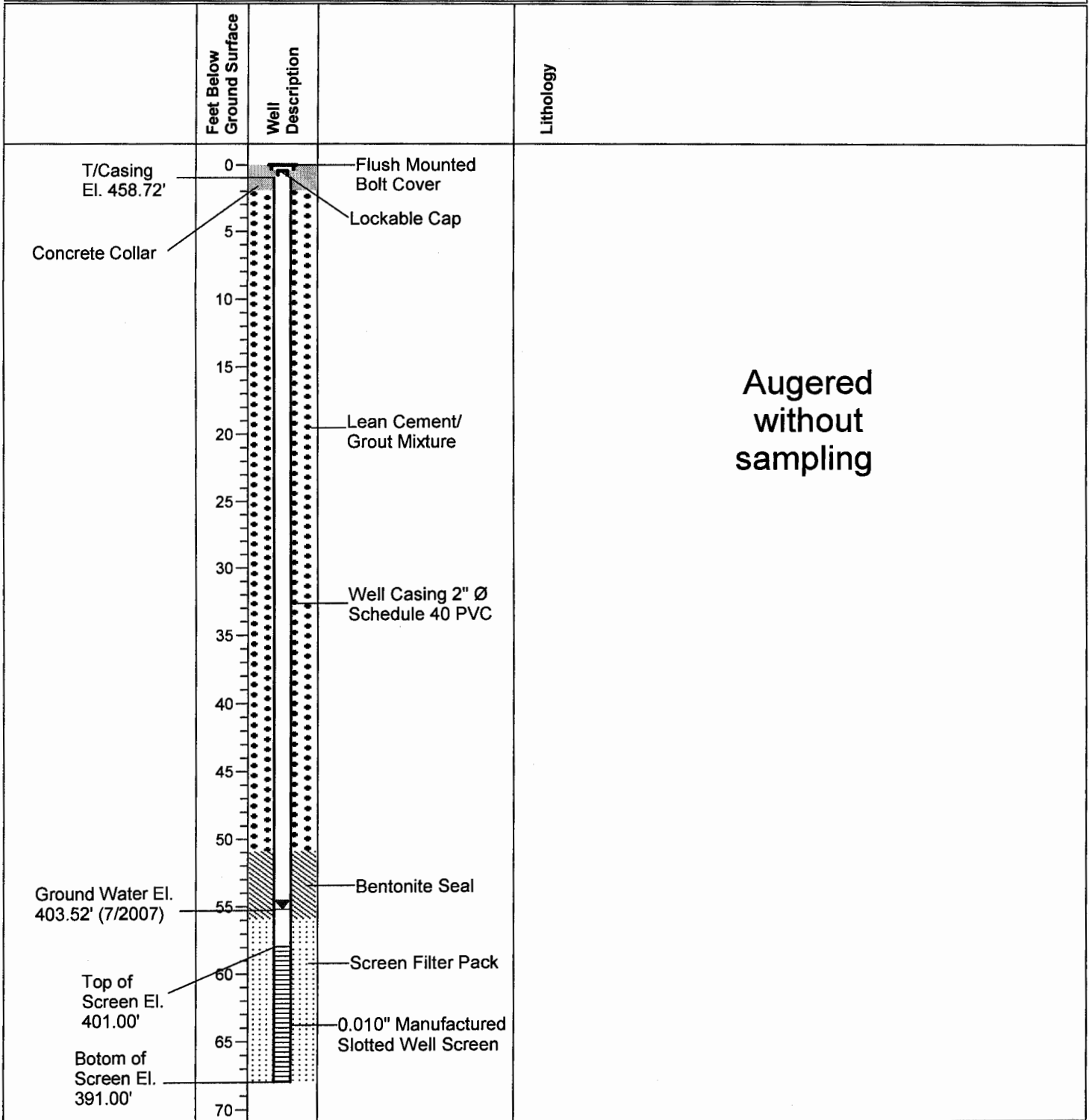
Well Number: MW-20B
Coordinates: E- 2287485.33 N- 904964.46
Ground Surface: 462.41
Logged By: Chuck Peel



Drilling Contractor: Walker-Hill Environmental, Inc.
Drilling Method: Rotary Auger & Mud Auger
Drilling Equipment: Rotary Auger
Drilling Started: 6/21/2007
Drilling Ended: 6/21/2007

Project: Groundwater Assessment
Location: Crystal Springs, MS
Client: BorgWarner, Inc.
Reviewed By: S. Spinner

Well Number: MW-21A
Coordinates: E- 2288135.87 N- 904676.18
Ground Surface: 459.00
Logged By: Chuck Peel



Drilling Contractor: Walker-Hill Environmental, Inc.
Drilling Method: Rotary Auger & Mud Auger
Drilling Equipment: Rotary Auger
Drilling Started: 7/2/2007
Drilling Ended: 7/2/2007

Project: Groundwater Assessment

Location: Crystal Springs, MS

Client: BorgWarner, Inc.

Reviewed By: S. Spinner

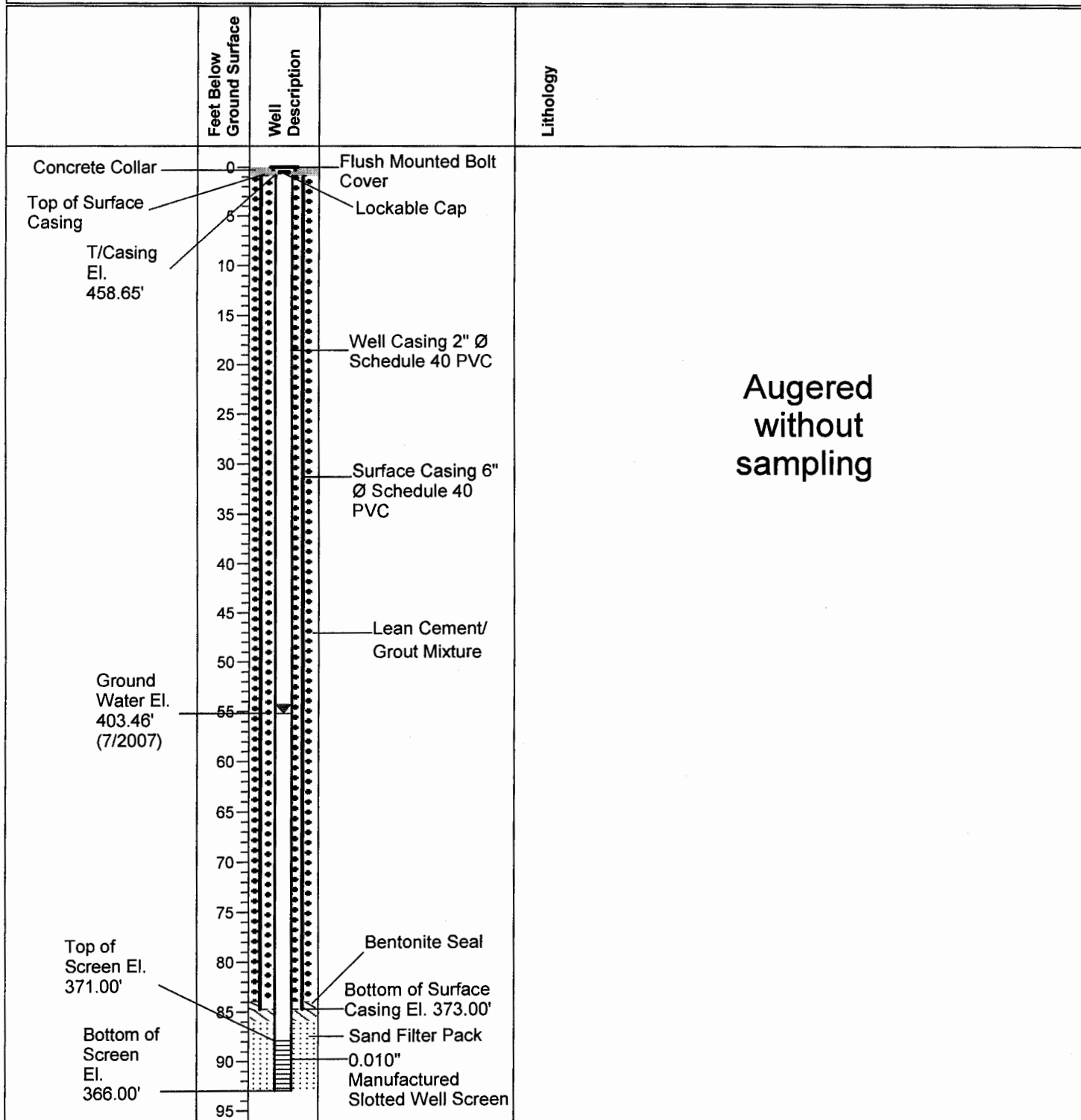
Well Number: MW-21B

Coordinates: E- 2288129.37

N- 904679.22

Ground Surface: 459.00

Logged By: Chuck Peel



Drilling Contractor: Walker-Hill Environmental, Inc.

Drilling Method: Rotary Auger & Mud Auger

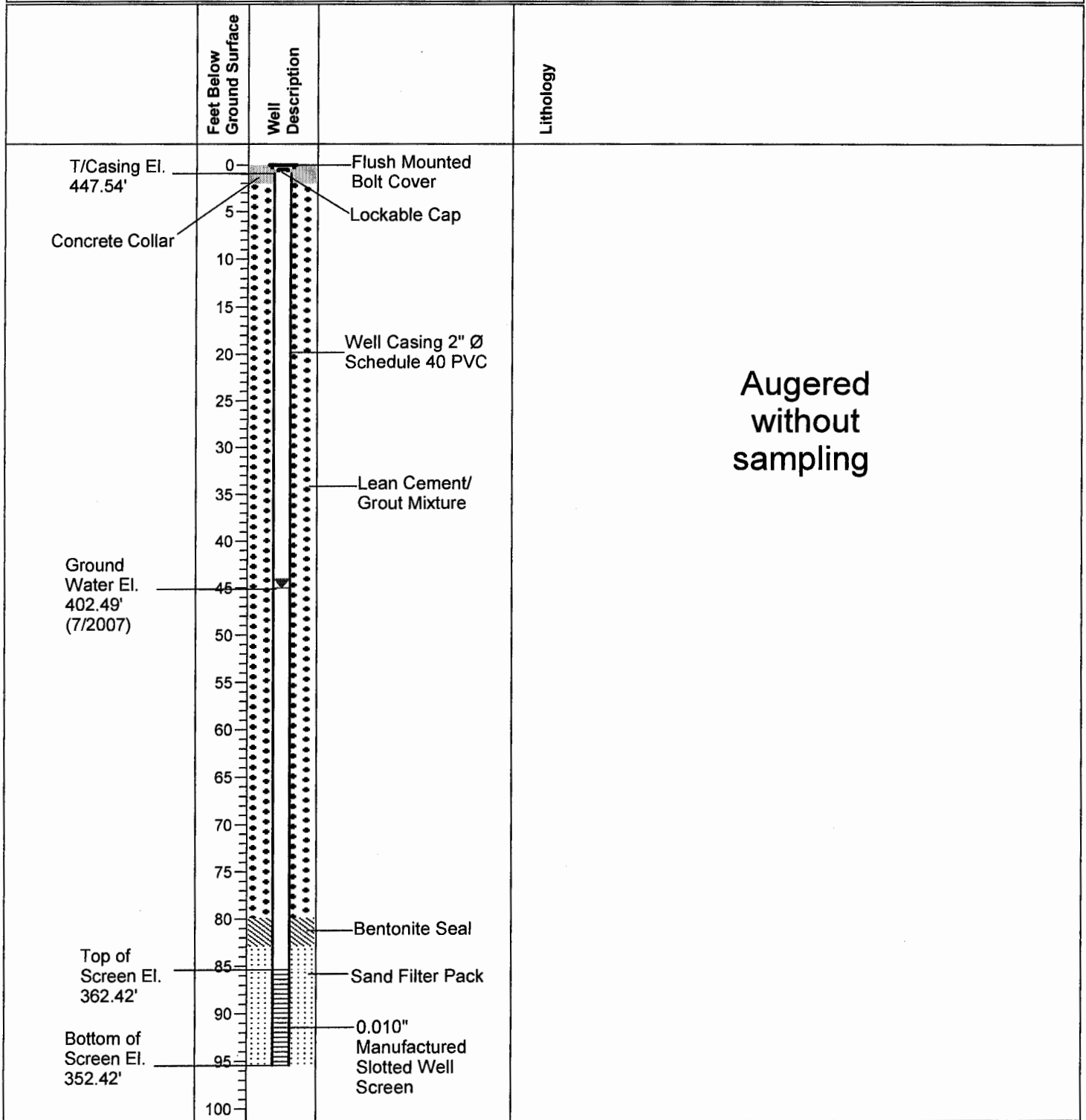
Drilling Equipment: Rotary Auger

Drilling Started: 7/3/2007

Drilling Ended: 7/16/2007

Project: Groundwater Assessment
Location: Crystal Springs, MS
Client: BorgWarner, Inc.
Reviewed By: S. Spinner

Well Number: MW-22
Coordinates: E- 2286757.99 N- 904576.75
Ground Surface: 447.92
Logged By: Chuck Peel



Drilling Contractor: Walker-Hill Environmental, Inc.
Drilling Method: Rotary Auger & Mud Auger
Drilling Equipment: Rotary Auger
Drilling Started: 6/12/2007
Drilling Ended: 6/12/2007

Project: Groundwater Assessment

Location: Crystal Springs, MS

Client: BorgWarner, Inc.

Reviewed By: S. Spinner

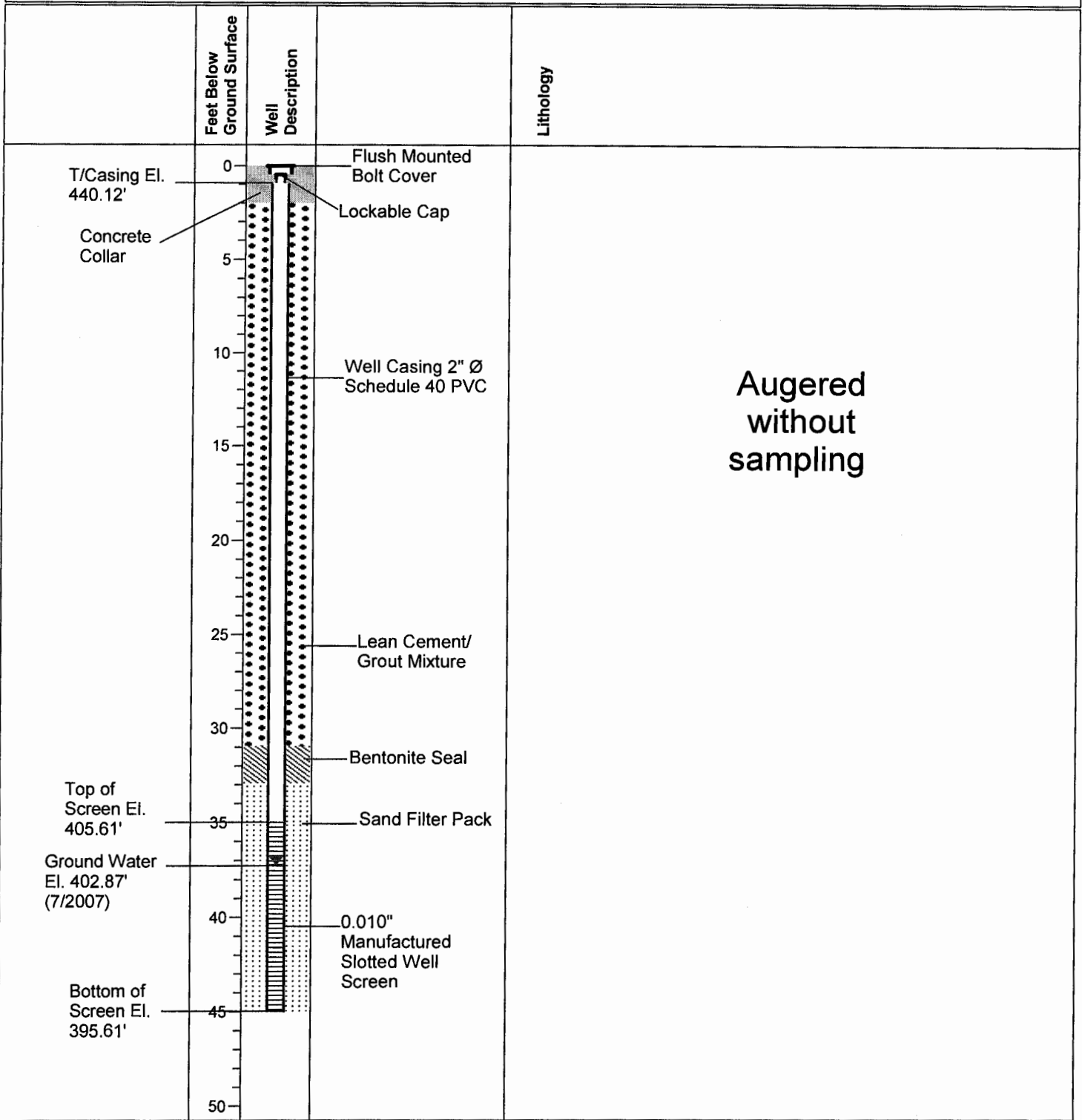
Well Number: MW-23A

Coordinates: E- 2287676.78

N- 904102.86

Ground Surface: 440.61

Logged By: Chuck Peel



Augered without sampling

Drilling Contractor: Walker-Hill Environmental, Inc.

Drilling Method: Rotary Auger & Mud Auger

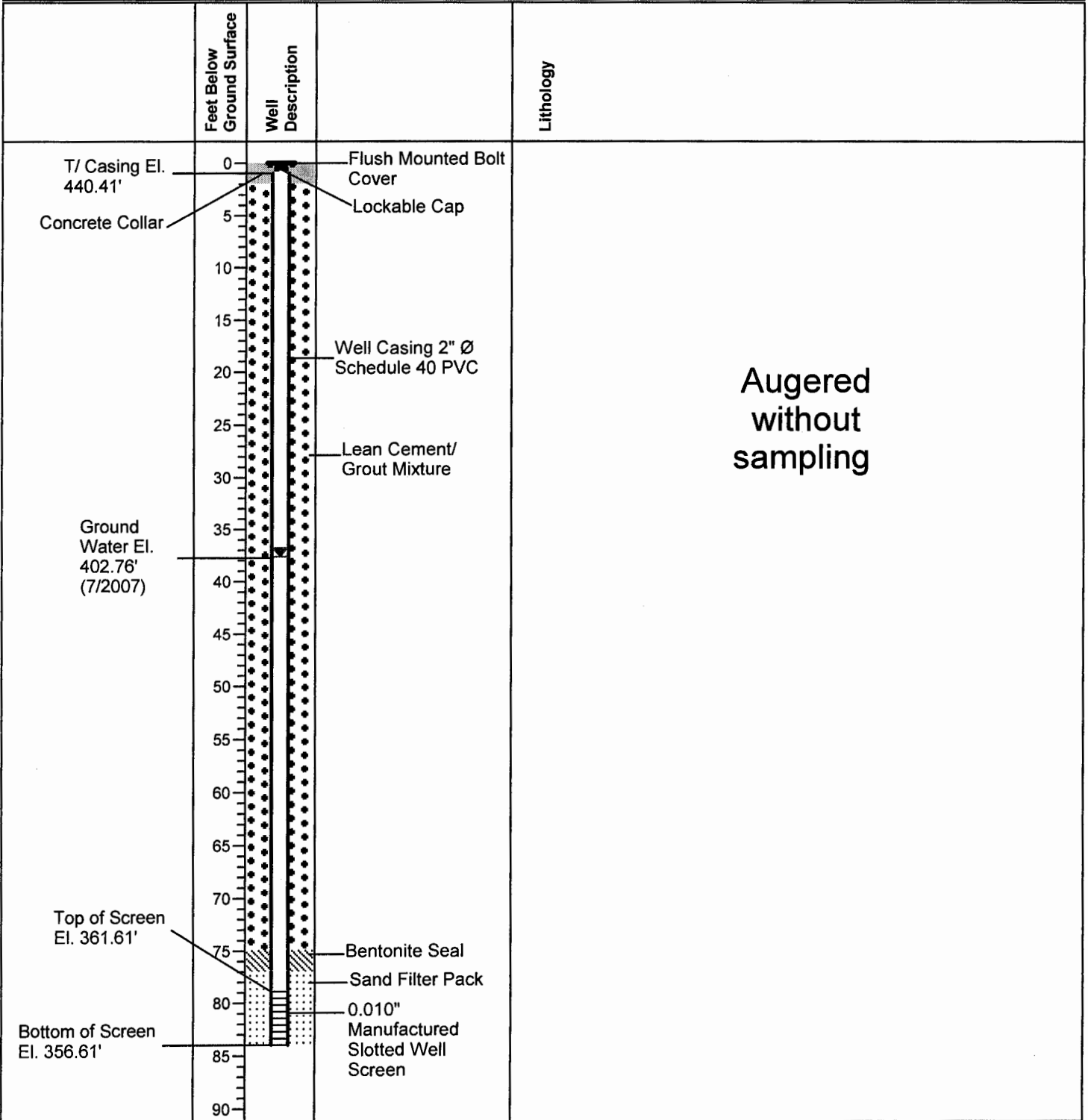
Drilling Equipment: Rotary Auger

Drilling Started: 6/15/2007

Drilling Ended: 6/15/2007

Project: Groundwater Assessment
Location: Crystal Springs, MS
Client: BorgWarner, Inc.
Reviewed By: S. Spinner

Well Number: MW-23B
Coordinates: E- 2287670.26 N- 904103.17
Ground Surface: 440.61
Logged By: Chuck Peel



Drilling Contractor: Walker-Hill Environmental, Inc.
Drilling Method: Rotary Auger & Mud Auger
Drilling Equipment: Rotary Auger
Drilling Started: 6/14/2007
Drilling Ended: 6/14/2007

Project: Groundwater Assessment

Location: Crystal Springs, MS

Client: BorgWarner, Inc.

Reviewed By: S. Spinner

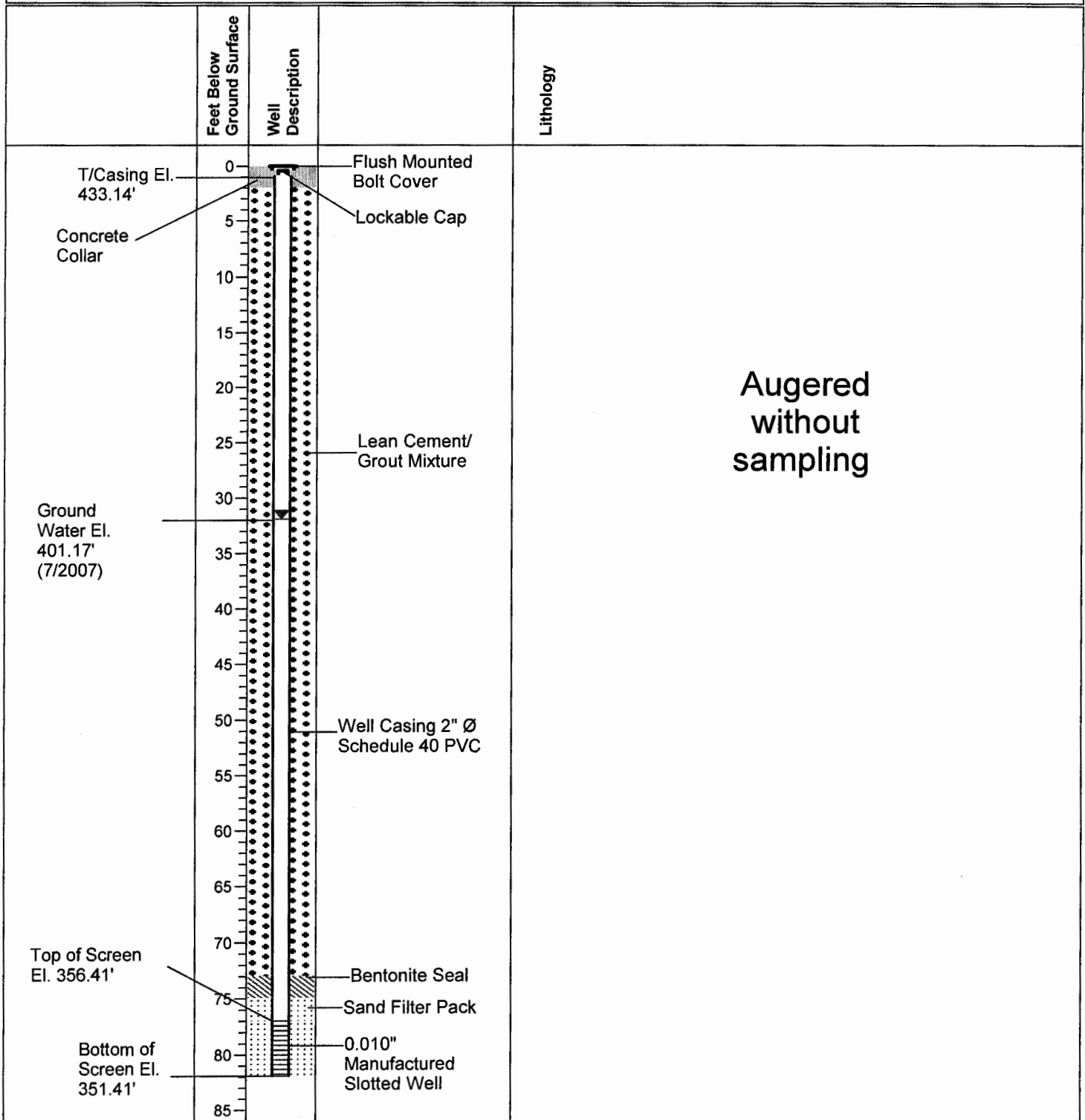
Well Number: MW-24

Coordinates: E- 2286816.73

N- 903581.39

Ground Surface: 433.41

Logged By: Chuck Peel



Drilling Contractor: Walker-Hill Environmental, Inc.

Drilling Method: Rotary Auger & Mud Auger

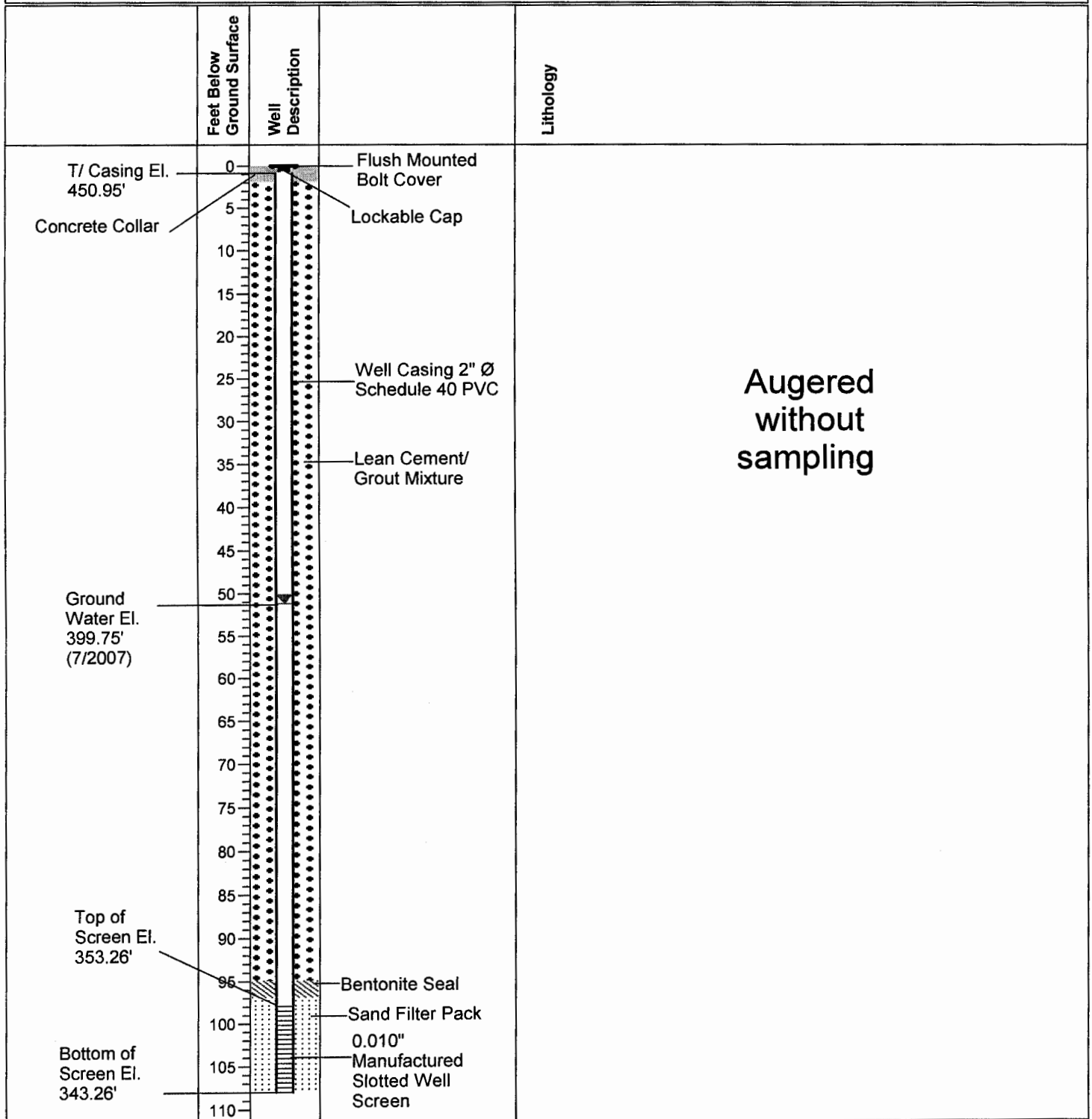
Drilling Equipment: Rotary Auger

Drilling Started: 7/5/2007

Drilling Ended: 7/5/2007

Project: Groundwater Assessment
Location: Crystal Springs, MS
Client: BorgWarner, Inc.
Reviewed By: S. Spinner

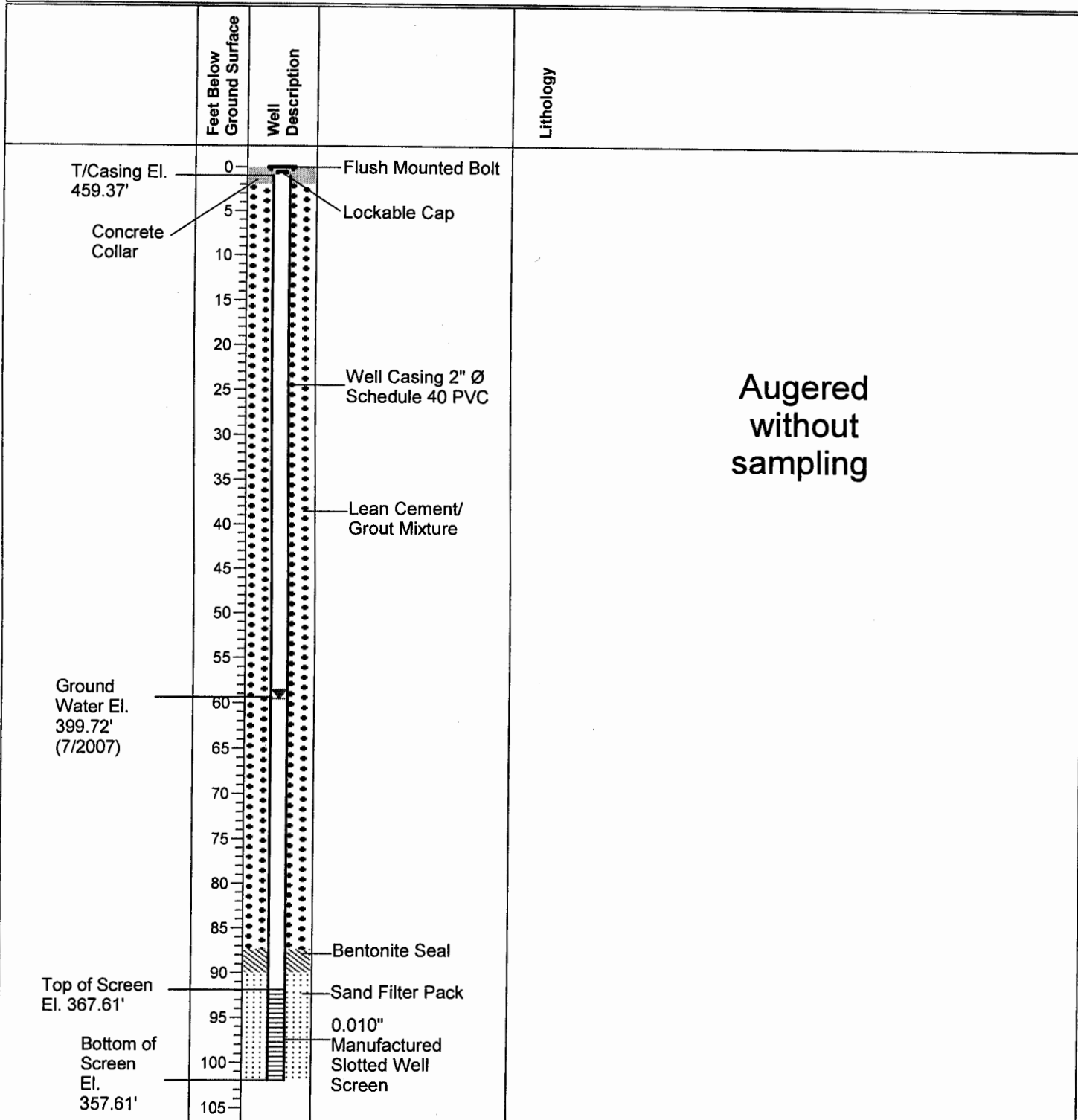
Well Number: MW-25
Coordinates: E- 2287832.40 N- 902801.60
Ground Surface: 451.26
Logged By: Chuck Peel



Drilling Contractor: Walker-Hill Environmental, Inc.
Drilling Method: Rotary Auger & Mud Auger
Drilling Equipment: Rotary Auger
Drilling Started: 7/13/2007
Drilling Ended: 7/13/2007

Project: Groundwater Assessment
Location: Crystal Springs, MS
Client: BorgWarner, Inc.
Reviewed By: S. Spinner

Well Number: MW-26
Coordinates: E- 2288229.07 N- 903092.89
Ground Surface: 459.61
Logged By: Chuck Peel



Drilling Contractor: Walker-Hill Environmental, Inc.
Drilling Method: Rotary Auger & Mud Auger
Drilling Equipment: Rotary Auger
Drilling Started: 6/13/2007
Drilling Ended: 6/13/2007

Project: Groundwater Assessment

Location: Crystal Springs, MS

Client: BorgWarner, Inc.

Reviewed By: S. Spinner

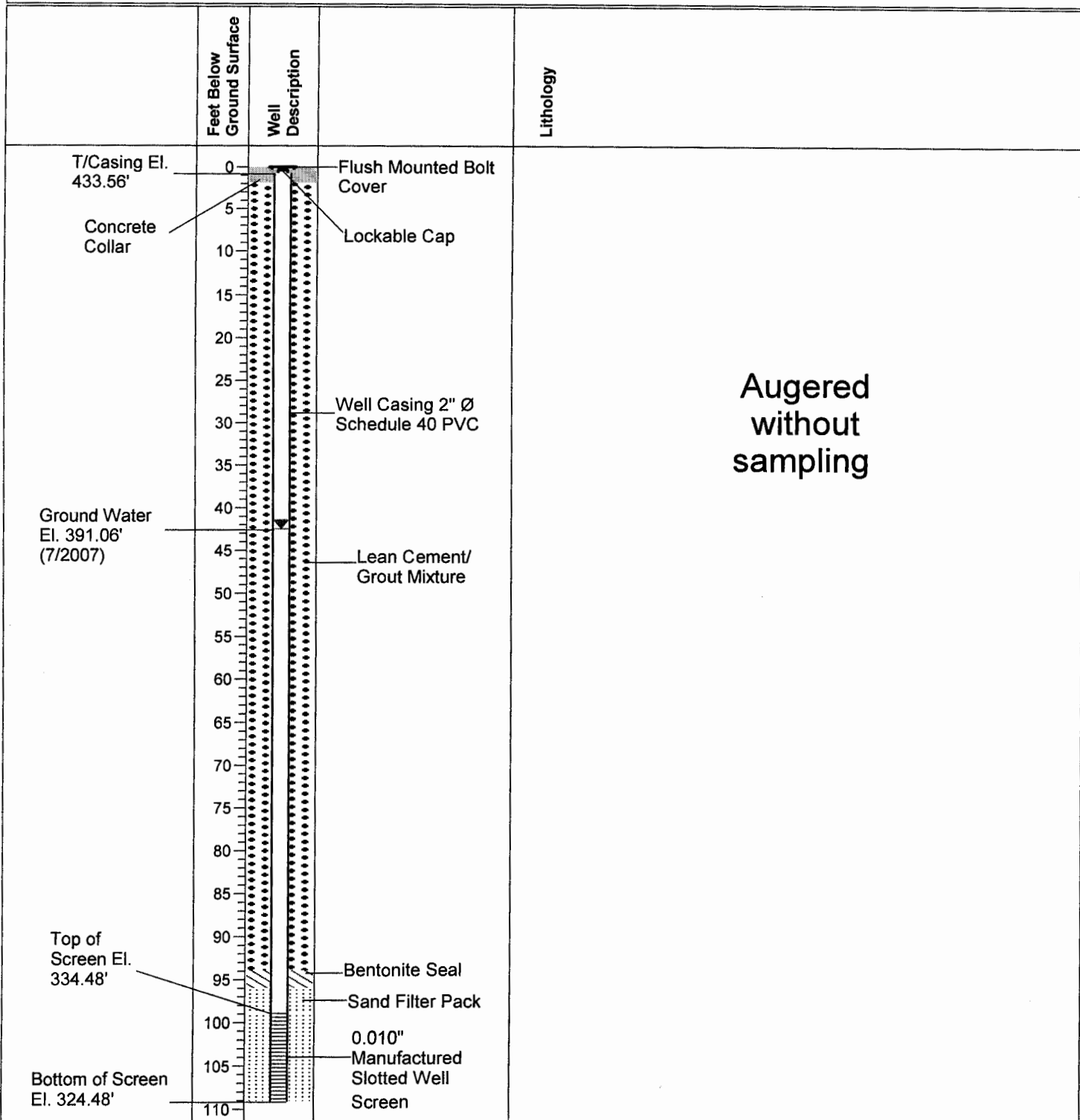
Well Number: MW-27

Coordinates: E- 2287498.52

N- 902206.54

Ground Surface: 433.48

Logged By: Robert Martin



Augered
without
sampling

Drilling Contractor: Walker-Hill Environmental, Inc.

Drilling Method: Rotary Auger/Mud Rotary

Drilling Equipment: Rotary Auger

Drilling Started: 7/17/2007

Drilling Ended: 7/17/2007