



State of Mississippi Water Quality Assessment 2004 Section 305(b) Report Addendum



State of Mississippi Water Quality Assessment 2004 Section 305(b) Report Addendum



Mississippi Department of
Environmental Quality

May 2004

Prepared by:
Natalie B. Guedon and Jeff V. Thomas
Watershed Management Branch
Post Office Box 10385
Jackson, MS 39289-0385
(601) 961-5171
www.deq.state.ms.us

Table of Contents

BASIN ASSESSMENTS	1
Introduction	1
BIG BLACK RIVER BASIN.....	3
Basin Description	3
Land Use	4
Water Resources.....	5
Surface Water Assessment.....	6
COASTAL STREAMS BASIN	21
Basin Description	21
Land Use	22
Water Resources.....	23
Surface Water Assessment.....	24
NORTH INDEPENDENT STREAMS BASIN.....	39
Basin Description	39
Land Use	40
Water Resources.....	41
Surface Water Assessment.....	41
PASCAGOULA RIVER BASIN	53
Basin Description	53
Land Use	54
Water Resources.....	55
Surface Water Assessment.....	57
PEARL RIVER BASIN.....	91
Basin Description	91
Land Use	92
Water Resources.....	93
Surface Water Assessment.....	95
SOUTH INDEPENDENT STREAMS BASIN.....	119
Basin Description	119
Land Use	120
Water Resources.....	121
Surface Water Assessment.....	121
TENNESSEE RIVER BASIN.....	137
Basin Description	137
Land Use	138
Water Resources.....	139
Surface Water Assessment.....	140
TOMBIGBEE RIVER BASIN	151
Basin Description	151
Land Use	152
Water Resources.....	153
Surface Water Assessment.....	154
YAZOO RIVER BASIN	177
Basin Description	177
Land Use	179
Water Resources.....	181
Surface Water Assessment.....	182

Table of Tables

Table 1: Summary of Big Black River Basin Use Support Assessments – Rivers and Streams	8
Table 2: Summary of Impairment Causes-Big Black River Basin	10
Table 3: Aquatic Life Use Support-Big Black River Basin	11
Table 4: Recreation Use Support-Big Black River Basin	13
Table 5: 2004 §305(b) Assessed Water Bodies-Big Black River Basin	15
Table 6: Summary of Coastal Streams Basin Use Support Assessments-River and Stream Miles	27
Table 7: Summary of Impairment Causes-Coastal Streams Basin	28
Table 8: Aquatic Life Use Support-Coastal Streams Basin	29
Table 9: Recreation Use Support-Coastal Streams Basin	31
Table 10: 2004 §305(b) Assessed Water Bodies-Coastal Streams Basin	34
Table 11: Summary of North Independent Streams Basin Use Support Assessments-Rivers and Streams	43
Table 12: Summary of Impairment Causes-North Independent Streams Basin	45
Table 13: Aquatic Life Use Support-North Independent Streams Basin	46
Table 14: Recreation Use Support-North Independent Streams Basin	48
Table 15: 2004 §305(b) Assessed Water Bodies-North Independent Streams Basin	51
Table 16: Summary of Pascagoula River Basin Use Support Assessments-Rivers and Streams	59
Table 17: Summary of Impairment Causes-Pascagoula River Basin	61
Table 18: Aquatic Life Use Support-Pascagoula River Basin	62
Table 19: Recreation Use Support-Pascagoula River Basin	67
Table 20: 2004 §305(b) Assessed Water Bodies-Pascagoula River Basin	73
Table 21: Summary of Pearl River Basin Use Support Assessments-Rivers and Streams	97
Table 22: Summary of Impairment Causes-Pearl River Basin	99
Table 23: Aquatic Life Use Support-Pearl River Basin	100
Table 24: Recreation Use Support-Pearl River Basin	103
Table 25: 2004 §305(b) Assessed Water Bodies-Pearl River Basin	107
Table 26: Summary of South Independent Streams Basin Use Support Assessments-Rivers and Streams	123
Table 27: Summary of Impairment Causes-South Independent Streams Basin	124
Table 28: Aquatic Life Use Support-South Independent Streams Basin	125
Table 29: Recreation Use Support-South Independent Streams Basin	127
Table 30: 2004 §305(b) Assessed Water Bodies-South Independent Streams Basin	129
Table 31: Summary of Tennessee River Basin Use Support Assessments-Rivers and Streams	141
Table 32: Summary of Impairment Causes-Tennessee River Basin	143
Table 33: Aquatic Life Use Support-Tennessee River Basin	144
Table 34: Recreation Use Support-Tennessee River Basin	146
Table 35: 2004§305(b) Assessed Water Bodies-Tennessee River Basin	149
Table 36: Summary of Tombigbee River Basin Use Support Assessments – Rivers and Streams	156
Table 37: Summary of Impairment Causes-Tombigbee River Basin	158
Table 38: Aquatic Life Use Support-Tombigbee River Basin	159
Table 39: Recreation Use Support-Tombigbee River Basin	163
Table 40: 2004 §305(b) Assessed Water Bodies-Tombigbee River Basin	167
Table 41: Summary of Yazoo River Basin Use Support Assessments-Rivers and Streams	184
Table 42: Summary of Impairment Causes-Yazoo River Basin	186
Table 43: Aquatic Life Use Support-Yazoo River Basin	187
Table 44: Recreation Use Support-Yazoo River Basin	192
Table 45: 2004 §305(b) Assessed Water Bodies-Yazoo River Basin	199

Table of Figures

Figure 1: Mississippi’s Ten Major Drainage Basins.....	2
Figure 2: Big Black River Basin (MDEQ).....	3
Figure 3: Distribution of Land Cover-Big Black River Basin (MARIS).....	4
Figure 4: Grouping of Land Cover in the Big Black River Basin (MARIS)	4
Figure 5: Big Black River Basin Monitoring Stations and M-BISQ Bioregions.....	6
Figure 6: Big Black River Basin Assessment of Perennial River and Stream Miles.....	8
Figure 7: Summary of Impairment Causes for Perennial Rivers and Streams-Big Black River Basin	10
Figure 8: Aquatic Life Use Support-Big Black River Basin.....	11
Figure 9: Aquatic Life Use Support Map-Big Black River Basin	12
Figure 10: Recreation Use Support-Big Black River Basin.....	13
Figure 11: Recreation Use Support Map-Big Black River Basin	14
Figure 12: Coastal Streams Basin (MDEQ).....	21
Figure 13: Major Land Cover in the Coastal Streams Basin (MARIS)	22
Figure 14: Distribution of Land Cover in the Coastal Streams Basin (MARIS)	22
Figure 15: Coastal Streams Basin Monitoring Stations and M-BISQ Bioregions.....	24
Figure 16: Coastal Streams Basin Assessment of Perennial Rivers and Streams.....	27
Figure 17: Summary of Impairment Causes for Perennial Rivers and Streams-Coastal Streams Basin	28
Figure 18: Aquatic Life Use Support-Coastal Streams Basin.....	29
Figure 19: Aquatic Life Use Support Map-Coastal Streams Basin	30
Figure 20: Recreation Use Support-Coastal Streams Basin.....	31
Figure 21: Recreation Use Support Map-Coastal Streams Basin	32
Figure 22: North Independent Streams Basin (MDEQ).....	39
Figure 23: Major Land Cover in the North Independent Streams Basin (MARIS)	40
Figure 24: Distribution of Land Cover in the North Independent Streams Basin (MARIS)	40
Figure 25: North Independent Streams Basin Monitoring Stations and M-BISQ Bioregions.....	41
Figure 26: North Independent Streams Basin Assessment of Perennial Rivers and Streams.....	43
Figure 27: Summary of Impairment Causes for Perennial Rivers and Streams-North Independent Streams Basin.....	45
Figure 28: Aquatic Life Use Support-North Independent Streams Basin.....	46
Figure 29: Aquatic Life Use Support Map-North Independent Streams Basin	47
Figure 30: Recreation Use Support-North Independent Streams Basin.....	48
Figure 31: Recreation Use Support Map-North Independent Streams Basin	49
Figure 32: Pascagoula River Basin (MDEQ).....	53
Figure 33: Major Land Cover in the Pascagoula River Basin (MARIS)	54
Figure 34: Distribution of Land Cover in the Pascagoula River Basin (MARIS)	55
Figure 35: Pascagoula River Basin Monitoring Stations	57
Figure 36: Pascagoula River Basin Assessment of Perennial Rivers and Streams.....	59
Figure 37: Summary of Impairment Causes for Perennial Rivers and Streams-Pascagoula River Basin ..	61
Figure 38: Aquatic Life Use Support-Pascagoula River Basin.....	62
Figure 39: Aquatic Life Use Support Map-Upper Pascagoula River Basin	63
Figure 40: Aquatic Life Use Support Map-Middle Pascagoula River Basin.....	64
Figure 41: Aquatic Life Use Support Map-Lower Pascagoula River Basin.....	65
Figure 42: Aquatic Life Use Support Map-Lower Pascagoula River Basin.....	66
Figure 43: Recreation Use Support- Pascagoula River Basin.....	67
Figure 44: Recreation Use Support Map-Upper Pascagoula River Basin	68
Figure 45: Recreation Use Support Map-Middle Pascagoula River Basin.....	69
Figure 46: Recreation Use Support Map-Lower Pascagoula River Basin	70
Figure 47: Recreation Use Support Map-Lower Pascagoula River Basin	71

Mississippi 2004 §305(b) Water Quality Assessment Report Addendum

Figure 48: Pearl River Basin (MDEQ) 91

Figure 49: Major Land Cover-Pearl River Basin 92

Figure 50: Distribution of Land Cover in the Pearl River Basin (MARIS) 93

Figure 51: Pearl River Basin Monitoring Stations 95

Figure 52: Pearl River Basin Assessment of Perennial Rivers and Streams 97

Figure 53: Pearl River Basin Summary of Impairment Causes for Perennial Rivers and Streams 99

Figure 54: Aquatic Life Use Support-Pearl River Basin 100

Figure 55: Aquatic Life Use Support Map-Upper Pearl River Basin 101

Figure 56: Aquatic Life Use Support Map-Lower Pearl River Basin 102

Figure 57: Recreation Use Support- Pearl River Basin 103

Figure 58: Recreation Use Support Map-Upper Pearl River Basin 104

Figure 59: Recreation Use Support Map-Lower Pearl River Basin 105

Figure 60: South Independent Streams Basin (MDEQ)..... 119

Figure 61: Major Land Cover in the South Independent Streams Basin (MARIS) 120

Figure 62: Distribution of Land Cover in the South Independent Streams Basin (MARIS) 120

Figure 63: South Independent Streams Basin Monitoring Stations and M-BISQ Bioregions 121

Figure 64: South Independent Streams Basin Assessment of Perennial Rivers and Streams 123

Figure 65: Summary of Impairment Causes for Perennial Rivers and Streams-South Independent Streams Basin 124

Figure 66: Aquatic Life Use Support-South Independent Streams Basin 125

Figure 67: Aquatic Life Use Support Map-South Independent Streams Basin 126

Figure 68: Recreation Use Support-South Independent Streams Basin 127

Figure 69: Recreation Use Support Map-South Independent Streams Basin 128

Figure 70: Tennessee River Basin (MDEQ) 137

Figure 71: Major Land Use in the Tennessee River Basin (MARIS) 138

Figure 72: Distribution of Land Cover in the Tennessee River Basin (MARIS) 138

Figure 73: Tennessee River Basin Monitoring Stations and M-BISQ Bioregions 140

Figure 74: Tennessee River Basin Assessment of Perennial Rivers and Streams 142

Figure 75: Summary of Impairment Causes for Perennial Rivers and Streams-Tennessee River Basin.. 143

Figure 76: Aquatic Life Use Support-Tennessee River Basin 144

Figure 77: Aquatic Life Use Support Map-Tennessee River Basin 145

Figure 78: Recreation Use Support-Tennessee River Basin 146

Figure 79: Recreation Use Support Map-Tennessee River Basin 147

Figure 80: Tombigbee River Basin (MDEQ) 151

Figure 81: Major Land Cover in the Tombigbee River Basin (MARIS) 152

Figure 82: Distribution of Land Cover in the Tombigbee River Basin (MARIS) 152

Figure 83: Tombigbee River Basin Monitoring Stations 154

Figure 84: Tombigbee River Basin Assessment of Perennial Rivers and Streams 156

Figure 85: Summary of Impairment Causes for Perennial Rivers and Streams-Tombigbee River Basin 158

Figure 86: Aquatic Life Use Support-Tombigbee River Basin 159

Figure 87: Aquatic Life Use Support Map-Upper Tombigbee River Basin 160

Figure 88: Aquatic Life Use Support Map-Middle Tombigbee River Basin 161

Figure 89: Aquatic Life Use Support Map-Lower Tombigbee River Basin 162

Figure 90: Recreation Use Support-Tombigbee River Basin 163

Figure 91: Recreation Use Support Map-Upper Tombigbee River Basin 164

Figure 92: Recreation Use Support Map-Middle Tombigbee River Basin 165

Figure 93: Recreation Use Support Map-Lower Tombigbee River Basin 166

Figure 94: Yazoo River Basin (MDEQ) 177

Figure 95: Major Land Use in the Yazoo River Basin (MARIS) 179

Figure 96: Distribution of Land Cover in the Yazoo River Basin (MARIS) 180

Figure 97: Yazoo River Basin Monitoring Stations and M-BISQ Bioregions 182

Mississippi 2004 §305(b) Water Quality Assessment Report Addendum

Figure 98: Yazoo River Basin Assessment of Perennial Rivers and Streams 184
Figure 99: Summary of Impairment Causes for Perennial Rivers and Streams-Yazoo River Basin..... 186
Figure 100: Aquatic Life Use Support-Yazoo River Basin 187
Figure 101: Aquatic Life Use Support Map-Upper Yazoo River Basin 188
Figure 102: Aquatic Life Use Support Map-Eastern Yazoo River Basin 189
Figure 103: Aquatic Life Use Support Map-Middle Yazoo River Basin 190
Figure 104: Aquatic Life Use Support Map-Lower Yazoo River Basin..... 191
Figure 105: Recreation Use Support-Yazoo River Basin 192
Figure 106: Recreation Use Support Map-Upper Yazoo River Basin 193
Figure 107: Recreation Use Support Map-Eastern Yazoo River Basin 194
Figure 108: Recreation Use Support Map-Middle Yazoo River Basin 195
Figure 109: Recreation Use Support Map-Lower Yazoo River Basin..... 196
Figure 110: Advisory area for the Delta Region of Mississippi 197

Mississippi 2004 §305(b) Water Quality Assessment Report Addendum

BASIN ASSESSMENTS

Introduction

MDEQ manages its surface water programs on a river basin scale and has established a process that coordinates the water assessment and management activities of numerous state and federal agencies. This process, the Mississippi Basin Management Approach, is responsible for the development of and recurring updates to, basin management plans for Mississippi's major river basins. This section is an addendum to the *State of Mississippi Water Quality Assessment 2004 §305(b) Report*. This addendum provides water quality assessments and general land use and water resources information specific to each of the state's major river basins. There are no new assessments represented in this addendum that are not part of the 2004 §305b report statewide summary presented in the main document. The information in this section is strictly a representation of the statewide §305(b) assessments broken down by river basin.

Hydraulically, the waters of Mississippi are divided into ten major drainage areas or river basins. These ten basins are the Big Black River Basin, Coastal Streams Basin, Mississippi River Basin, North Independent Streams Basin, Pascagoula River Basin, Pearl River Basin, South Independent Streams Basin, Tennessee River Basin, Tombigbee River Basin and Yazoo River Basin. The boundaries for each basin are shown in Figure 1. For MDEQ management purposes, the Mississippi River Basin has been divided into upper and lower portions. The upper portion has been grouped with the Yazoo River Basin and the lower portion has been grouped with the South Independent Streams Basin.

In the following sections, a discussion of each basin's location, water resources, special water body classifications, and water quality monitoring stations used in the §305(b) assessment process is presented. In addition, a brief description of each basin's physiography, population, and land use/land cover distribution are also given. Surface water quality assessment data are presented and discussed including a summary of the basin's water body assessment status and causes and sources of impairment. Maps, tables and other graphical charts are utilized fluently in depiction of the above information. At the end of each basin section is an alphabetical listing of all individual water body assessments made for the 2004 §305(b) report. With each water body entry, pertinent information regarding water body ID number, county, reach location, assessed use, and assessment status are shown. This table also provides the necessary information to cross-reference §305(b) assessments with the 2004 §303(d) list.

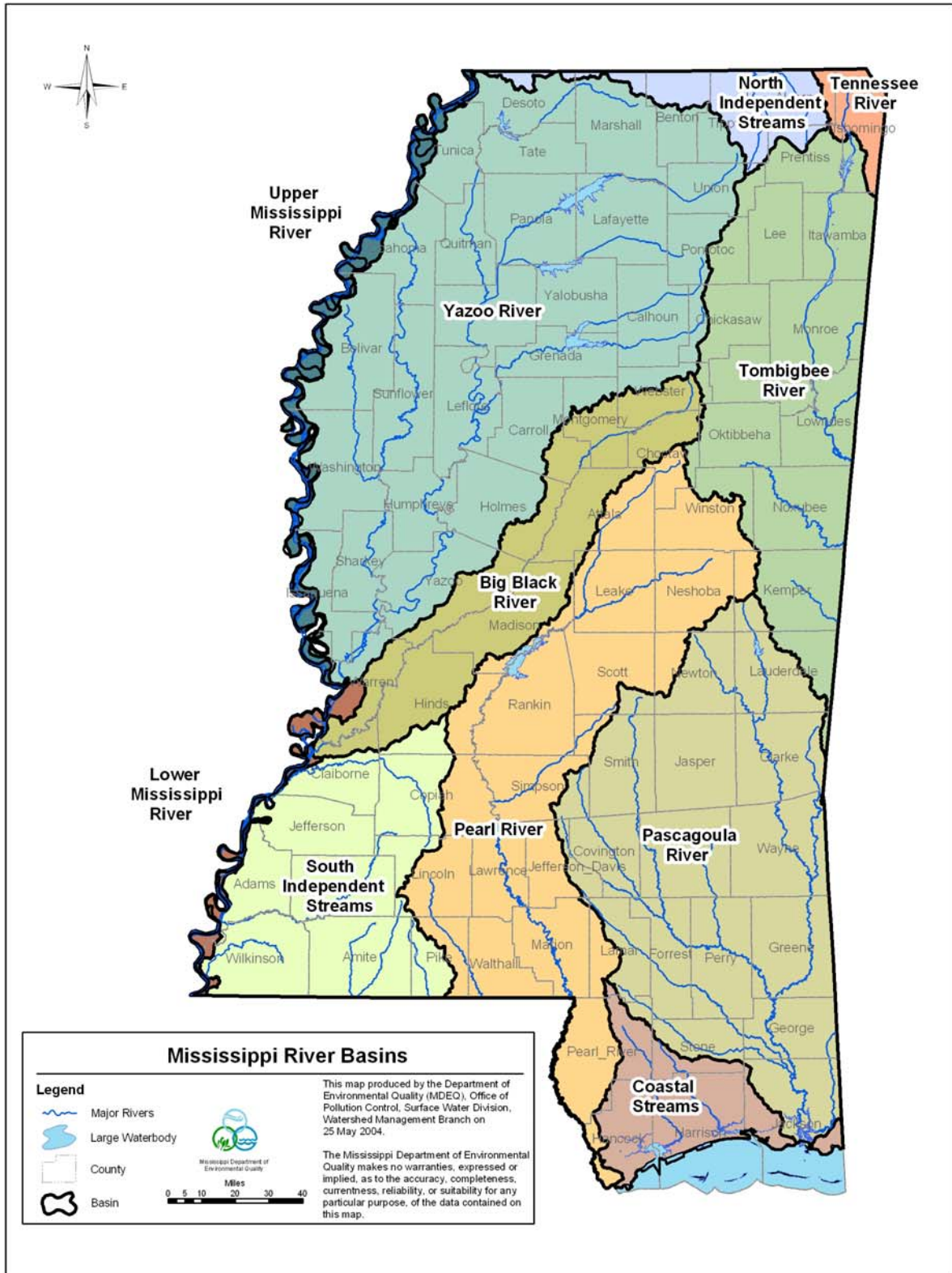
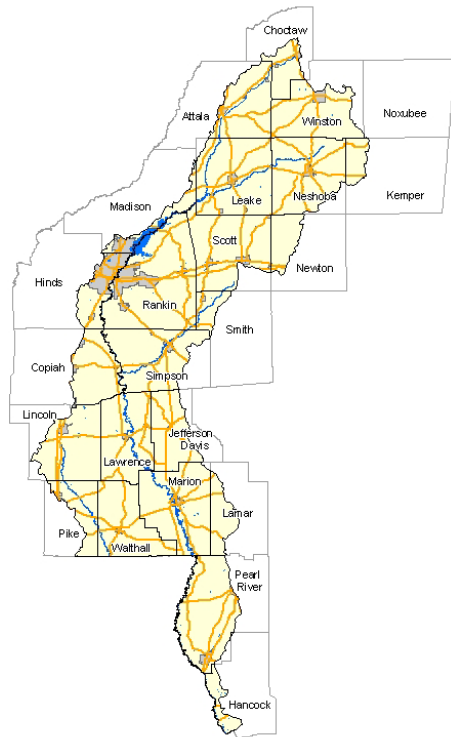


Figure 1: Mississippi's Ten Major Drainage Basins

PEARL RIVER BASIN

Basin Description

The Pearl River Basin is located in east-central and southwest Mississippi and in the southeastern part of Louisiana (Figure 48). The basin spans from the headwaters in east-central Mississippi near Philadelphia, through central Mississippi, to the coast. The Pearl River itself is approximately 490 miles long, drains an area of 8,760 square miles and comprises all or part of 24 counties in east-central and southern Mississippi. This area



constitutes the fifth-largest flood-plain in the United States. Some significant tributaries to the river include the Yockanookany River, Bogue Chitto River, and Strong River. The Pearl River is formed in Neshoba County, by the confluence of Bogue Chitto, Nanaway and Tallahaga Creeks. The river flows southwesterly for about 146 miles to the Ross Barnett Reservoir at Jackson, then 217 miles in a southerly direction to the head of its outlet channels, the West Pearl and Pearl Rivers. These channels continue in the same general direction for 44 and 48 miles, respectively, and empty into Lake Borgne in Louisiana and the Mississippi Sound. The West Pearl River lies entirely within the State of Louisiana. The lower 61 miles of Pearl River form part of the boundary between Mississippi and Louisiana.

Figure 48: Pearl River Basin (MDEQ)

Much of the upper two-thirds of the Pearl River Basin consist of gently rolling to hilly terrain. In the southern part of the basin, the land is much flatter as the low, rolling forested hills give way to lowlands and marshes near the coast. The only large urban area in this basin is the Jackson metropolitan area which is the most populous part of the state.

The population for counties within the Pearl River Basin was estimated in 2000 at 956,574. There has been an 11% increase since 1990. From an entire basin standpoint, the greatest concentration of people is generally found in the Jackson metropolitan area with the average population density being approximately 154 people per square mile.

Land Use

The primary land use in the Pearl River Basin is forestry or silviculture but land use patterns in portions of the Pearl River Basin are slowly changing (Figure 49). Traditional row cropland in the Upper Pearl River basin is being forested and the effects of increased urbanization are becoming more evident throughout the basin. The transition to urban landscape is especially evident around the Jackson Metropolitan area.

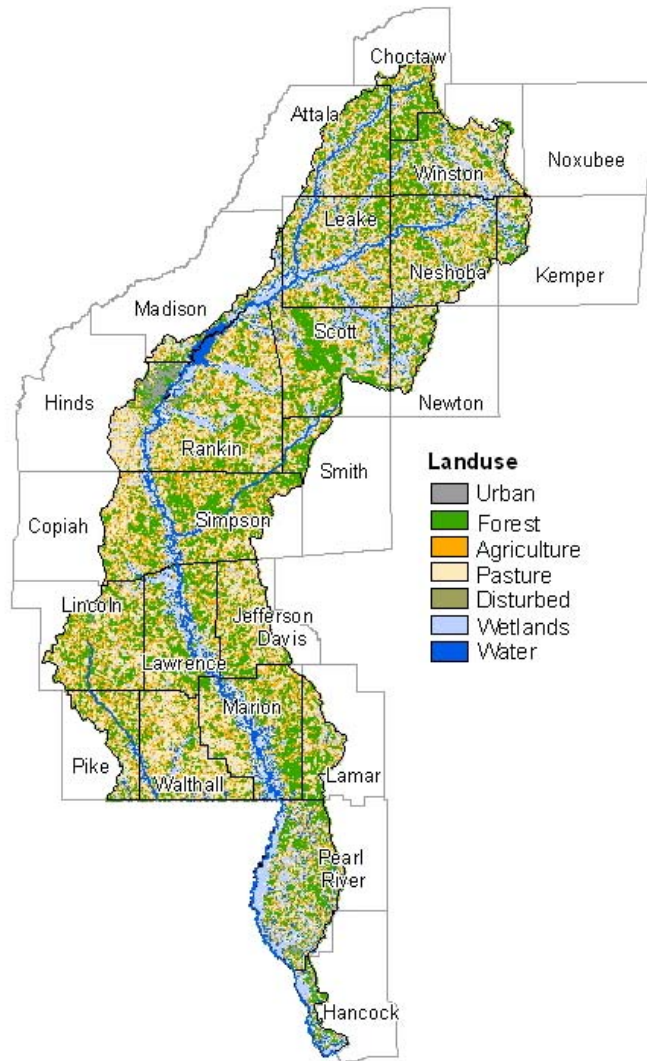


Figure 49: Major Land Cover-Pearl River Basin

Urban areas make up only 1% of the basin's total land cover (Figure 50). *Forest* areas, evergreen, deciduous and mixed-forests, represent the dominant land cover making up 43% of the total. *Wetland* areas, forested and non-forested wetlands and coastal marsh, comprise 10% of the total land cover while *Water* resources, streams, lakes, reservoir and estuaries, only represent 1%. *Agricultural* and *Pasture* land features make up 27% of the land features. *Disturbed* areas including strip mines, gravel pits, sandy areas, barren, and transitional areas comprise the remaining 18% of the basin.

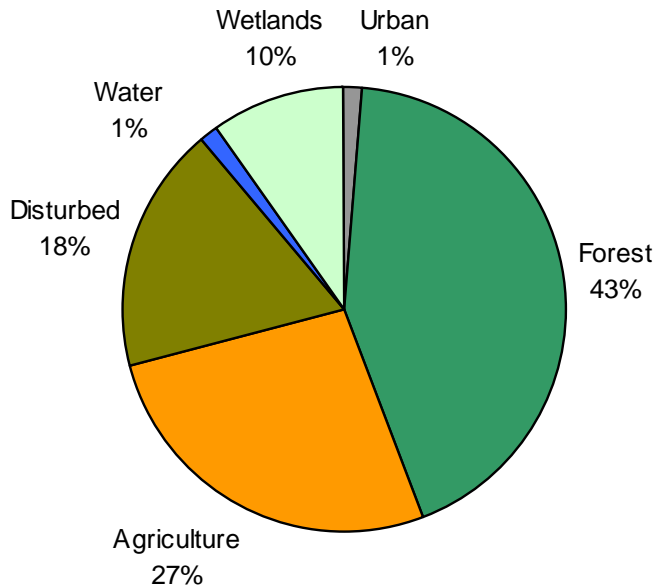


Figure 50: Distribution of Land Cover in the Pearl River Basin (MARIS)

Water Resources

The Pearl River Basin has a total of 16,300 miles of perennial and intermittent rivers and streams. According to the state's water quality standards (WQS), the majority of these water bodies are classified as Fish and Wildlife streams. In addition to the Fish and Wildlife Classification, portions of the Pearl, Strong, and Bogue Chitto Rivers are classified for Recreation. A portion of the Pearl River near Jackson is also classified as Public Water Supply along with the Ross Barnett Reservoir; both are used as a source of raw water supply for the city of Jackson. The majority of the streams are deep to moderately deep, fast flowing perennial streams.

Streams in much of the upper and middle portions of the basin generally have fairly fast, deep flows for a short time after rain events and relatively shallow base flows. Principal tributaries of the Pearl River in the upper and middle reaches include Yockanookany

River, Lobutch Creek, Tuscalometa Creek, Pelahatchie Creek, Silver Creek, Fair River, Holiday Creek, White Sands Creek and the Strong River.

Streams in most of the lower Pearl basin usually flow at a fast pace and have a deep base flow. Major streams in this portion of the basin include the Bogue Chitto River, Hobolochitto Creek, Pushepatapa Creek, Magees Creek and Upper Little Creek. The majority of flow in the lower end of the Pearl River has historically been diverted to Louisiana due to channel alterations. These alterations left the original river channel near Picayune essentially dry during low-flow conditions. This situation was addressed in 1997 and 1998 through a cooperative effort between the states of Mississippi and Louisiana and local entities, which called for construction of a weir and closures to restore flows into the original channel. The project was completed in 1998, but is still being monitored by the U.S. Army Corp of Engineers. Near the Mississippi Gulf Coast, the Pearl River becomes estuarine where it is bounded by salt marsh and is tidally influenced.

Within this basin, the major lake and reservoir feature is the Ross Barnett Reservoir, an impoundment of some 33,000 acres, located just north of Jackson and stretching about 43 miles in length. Located near the state's largest urban area, the reservoir is used extensively for recreation. In addition to the Ross Barnett Reservoir which is classified for recreation and public water supply, two other lakes in the basin (Lake Dixie Springs and Lake Columbia) are also classified for Recreation according to the state's WQS. Several small reservoirs and lakes can also be found in the Pearl River Basin including Roosevelt State Park Lake near Morton.

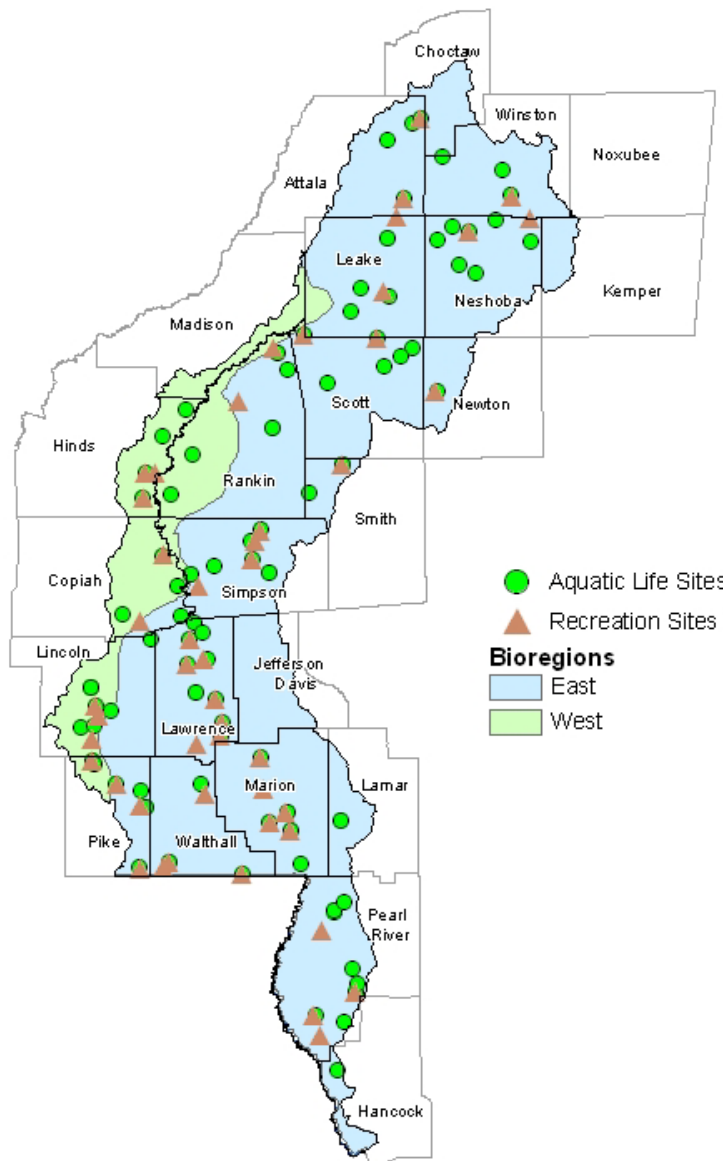
As with the Pascagoula River and Coastal Streams Basins, an important aspect of the Pearl River Basin is the role it plays in maintaining the health and diversity of the Mississippi Sound. The Pearl River Basin, along with the Pascagoula River Basin, supplies the largest portions of the fresh water entering the Mississippi Sound. Near the mouth, the transition from freshwater to saltwater has created an extensive salt marsh resource in Hancock County. Although not as large as the Coastal Streams Basin and the Pascagoula River Basin, the total coastal marsh (marsh below the 15 ft contour) within Mississippi's Pearl River Basin is approximately 9,000 acres, making up roughly 40% of the total marsh habitat in Hancock County.

In terms of biological resources, the Pearl River Basin has 9 federally threatened and 1 federally endangered species. This basin also includes several water bodies proposed for review as potential Mississippi Natural and Scenic Waterways System water bodies: Pearl River, Strong River, Bogue Chitto River, and Magees Creek.

Surface Water Assessment

Designated Use Support

The assessments for the Pearl River Basin were made based on data from 155 sampling locations in streams and rivers across the basin sampled by MDEQ as part of the §303(d)/IBI wadeable streams project and the §303(d) fecal coliform monitoring project (Figure 51). The perennial streams where the monitoring stations were located



represented the mainstem drainage for each 11-digit watershed in the basin. Use support status for the basin is presented and summarized with causes and sources of impairment.

There are currently five fish advisories on waters in the Pearl River Basin. For more information on these advisories, see Part III Public Health Concerns and Advisories in the 2004 §305(b) report.

There are currently five fish advisories on waters in the Pearl River Basin. For more information on these advisories, see Part III Public Health Concerns and Advisories in the 2004 §305(b) report.

Figure 51: Pearl River Basin Monitoring Stations

MDEQ assessed approximately 25% (1,375 miles) of the total 5,560 perennial miles of streams and rivers in the Pearl River Basin. The status of water quality on the remaining 75% (4,185 miles) of the basin's perennial rivers and streams is unknown. The majority of stream miles (66%) in the Pearl River Basin is composed of intermittent streams and therefore is not readily assessable. A summary of use support for the basin's assessed rivers and streams is found in Table 21 and Figure 52. For water bodies with multiple assessed uses, the EPA Assessment Database (ADB) summary under represents the actual amount of attaining mileage assessed. For water bodies with multiple uses assessed, the ADB automatically assigns the water body mileages according to the Integrated Reporting category system. This categorization system assigns a water body to only one of five categories:

Category 1: Attaining all uses

Category 2: Attaining some uses but insufficient information for assessment of other uses

Category 3: Insufficient information to assess any use

Category 4: Not attaining a use but a TMDL is not necessary

Category 5: Not attaining a use and a TMDL is needed

EPA defines a Category 1 water as having sufficient data to prove there is no impairment for any potential designated use of that water body. Due to EPA requirements for Category 1 that all uses are assessed, Mississippi currently has no water bodies assigned to Category 1. If a water body is attaining one use but is not attaining another use, it is assigned to one of the not attaining categories (Category 4 or 5). Therefore, the amounts of waters attaining a designated use are under represented in the following table.

Of the assessed stream and river miles in the Pearl River Basin, approximately 8% are in category 2 for attaining some uses but unknown for remaining water body uses, and 8% are in category 4 as not attaining one or more designated uses but a TMDL is not necessary. Waters in category 5 as not attaining and needing a TMDL make up 13% of the assessed water bodies. The status of the remaining 71% of water bodies in the Pearl River Basin is unknown and these waters are reflected in category 3. Of the 743 miles of waters in category 5, 63% (470 miles) are assessed as being biologically impaired. Stressor Identification studies will be conducted to determine the actual cause and source of the impairment for these waters. Waters in category 5 can be found listed in Section A (Water Bodies with Monitoring Data) in the Pearl River Basin section of the 2004 §303(d) list. Please refer to Table 25 at the end of the Pearl River Basin section for a tabular listing of all assessments. This table also provides the necessary information to cross-reference the §305(b) assessments with the §303(d) list.

Table 21: Summary of Pearl River Basin Use Support Assessments-Rivers and Streams

Degree of Use Support	Total Size in Miles
Category 1: Attaining All Uses	
Category 2: Attaining Some Uses but Unknown for Other Uses	469
Category 3: Unknown/Insufficient Data for Assessment	14,925
Intermittent Miles	10,739
Perennial Miles	4,186
Category 4: Not Attaining – No TMDL Needed	163
A. TMDL Completed	163
B. Impairment Caused by Pollution	0
C. Expected to Attain Use before Next Assessment	0
Category 5: Not Attaining – TMDL Needed	743
A. Pollutant Identified	273
B. Biological Impairment- Cause Unknown	470
Total Miles	16,300

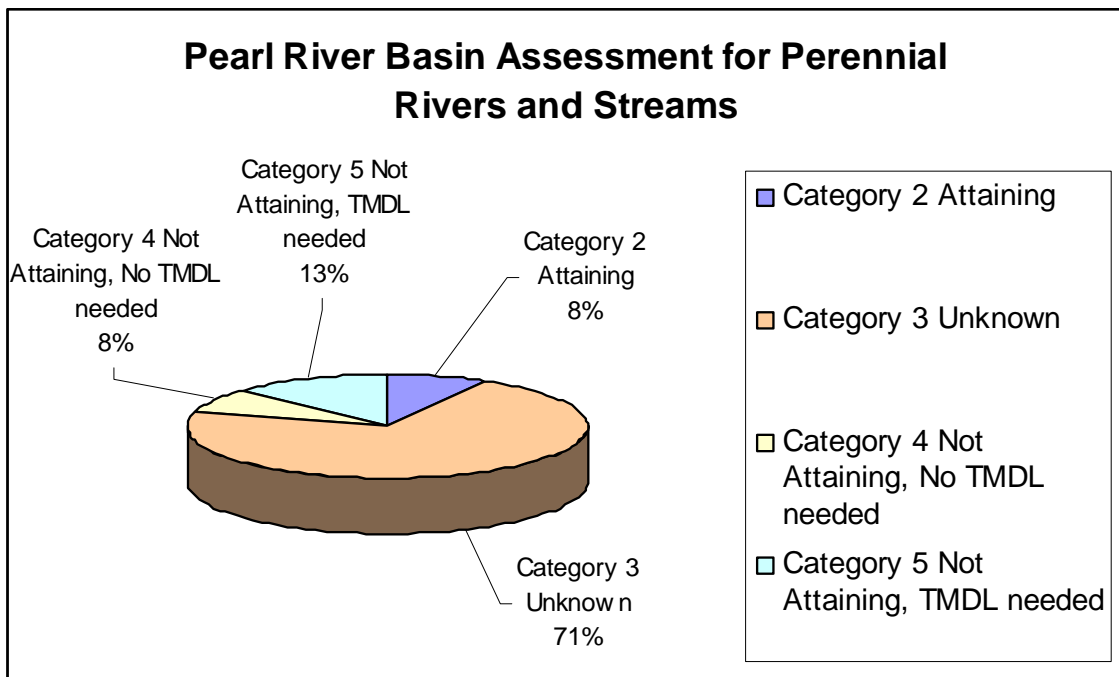


Figure 52: Pearl River Basin Assessment of Perennial Rivers and Streams

Causes and Sources of Impairment of Designated Uses

Causes and sources of impairment were evaluated for streams and rivers having one or more uses impaired. Total assessed sizes of streams and rivers affected by various cause categories are given in Table 22 and Figure 53. For the majority of miles of assessed rivers not meeting their designated uses, impairment is caused by unknown pollutants or other factors contributing to biological impairment. In these cases, actual monitoring has detected biological impairment but the exact pollutant cause has yet to be determined. For these impaired waters, the next step in the state's water quality management process will be to conduct stressor identification analyses to identify the stressor(s) causing the impairment. Once the stressor(s) are identified, the Total Maximum Daily Load (TMDL) process where applicable can proceed. For stressors identified that are not applicable to the TMDL process, other water quality management actions will be needed. Other causes of impairment noted in the basin are from pathogens, mercury, and PCBs. The source of pathogen and biological impairments in the Pearl River Basin is unknown. As stated above, the majority of impairment was determined to be biological and therefore sources of the impairment are yet to be determined. Other sources of impairment include mercury which is believed to result from a combination of natural geologic conditions, old industrial point sources, and atmospheric deposition from coal fired plants and incinerators and runoff from industrial point sources for the PCBs.

Table 22: Summary of Impairment Causes-Pearl River Basin

Cause Categories	Total Miles
PCB's	3
Mercury	120
Pathogens	377
Biological Impairment	595
Total	1,095

* Note: Definitive cause identification is not possible at the time of assessment. Category applies to waters where biological indicators (macroinvertebrates) were used and impairment was indicated but further investigation needed to quantify pollutant.

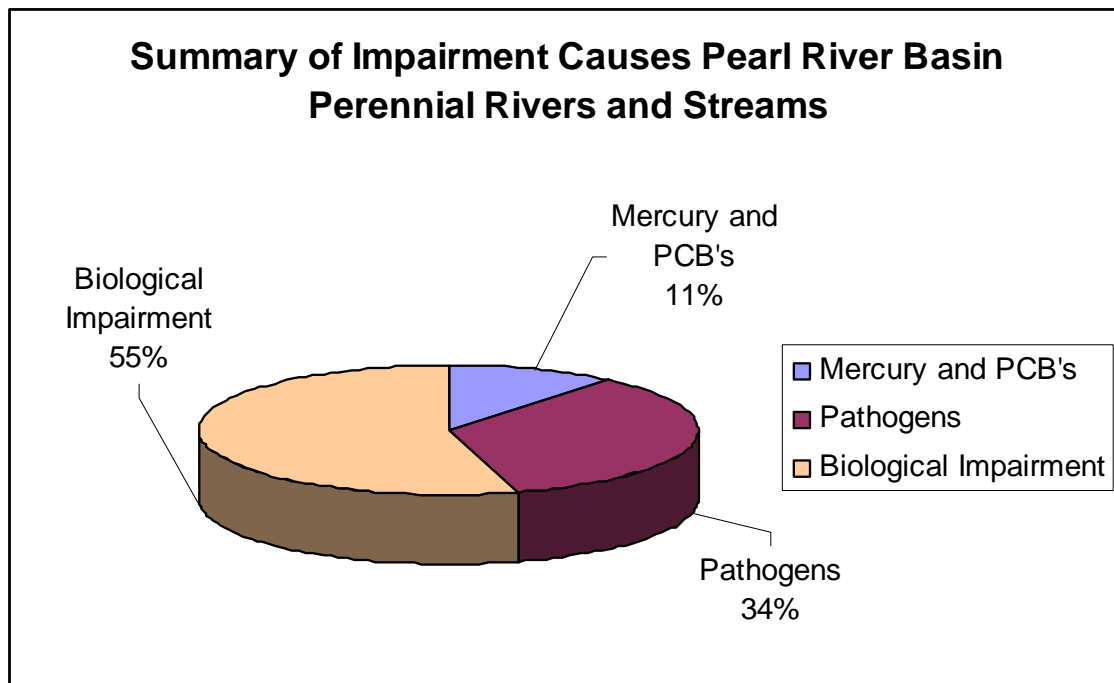


Figure 53: Pearl River Basin Summary of Impairment Causes for Perennial Rivers and Streams

Aquatic Life Use Support

As stated earlier, all of the Aquatic Life Use Support assessments were based on biological monitoring data collected as part of the development of Mississippi’s IBI process, M-BISQ. Of the Pearl River Basin’s assessed stream and river miles, approximately 535 miles of perennial rivers and streams are attaining their aquatic life use, while 595 miles were assessed as not attaining and are considered impaired (Table 23 and Figure 54). All of the non-attainment assessments are contributed to biological impairment and stressor identification studies are pending to determine the actual pollutant(s) contributing to the impairment. Figures 55-56 depict geo-referenced coverages of the Aquatic Life Use Support assessments for the Pearl River Basin.

Table 23: Aquatic Life Use Support-Pearl River Basin

Status	Miles
Attaining	535
Unknown	4,430
Total Not Attaining	595
TMDL not needed	0
TMDL needed	595
Total	5,560

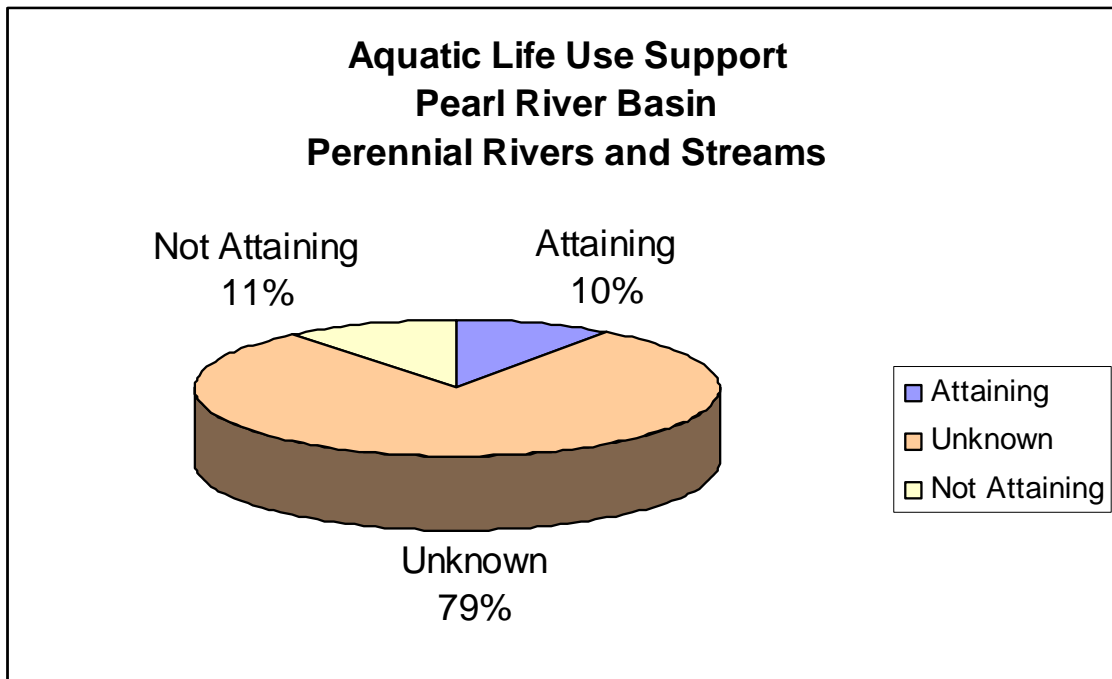


Figure 54: Aquatic Life Use Support-Pearl River Basin

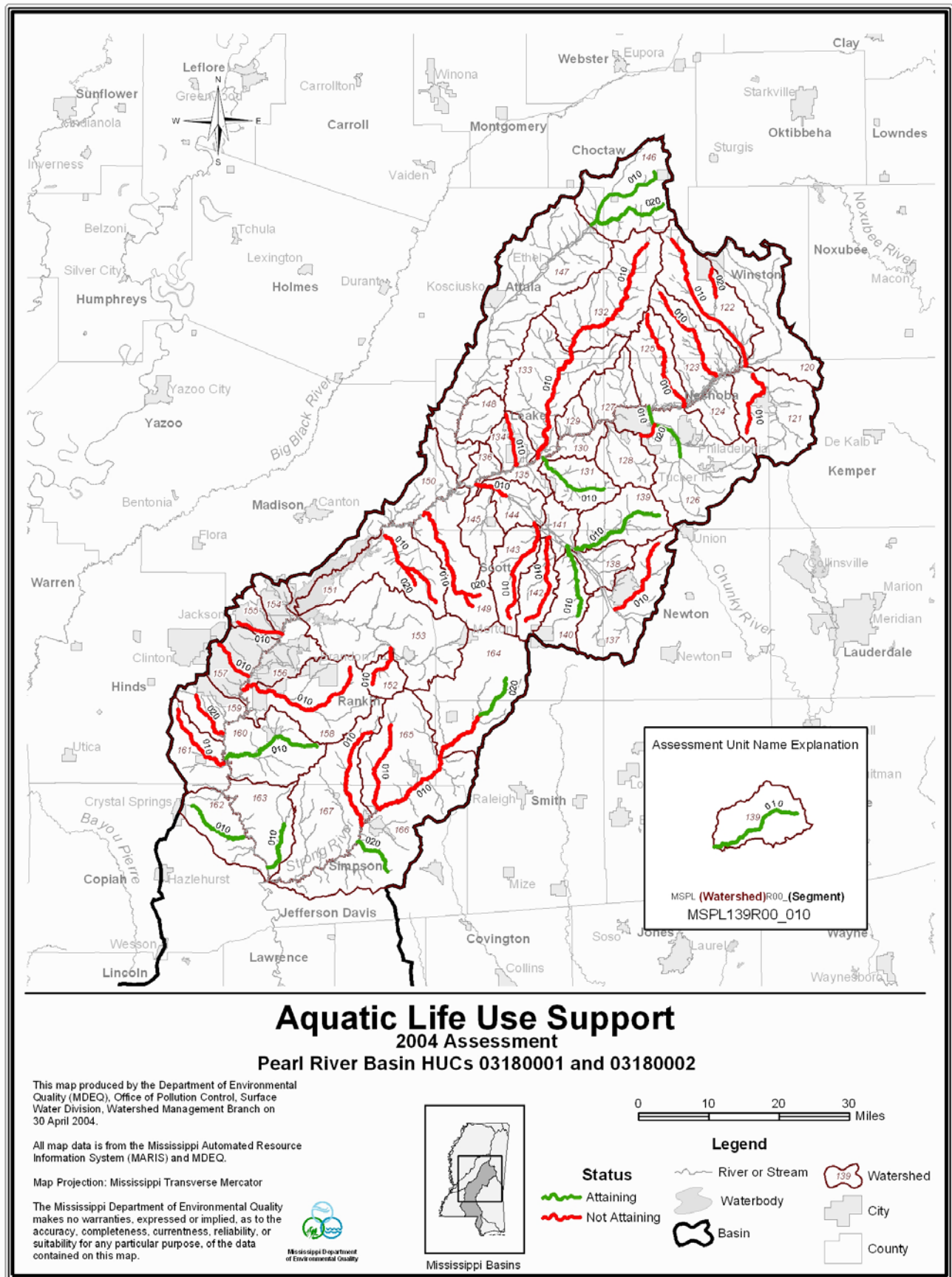


Figure 55: Aquatic Life Use Support Map-Upper Pearl River Basin

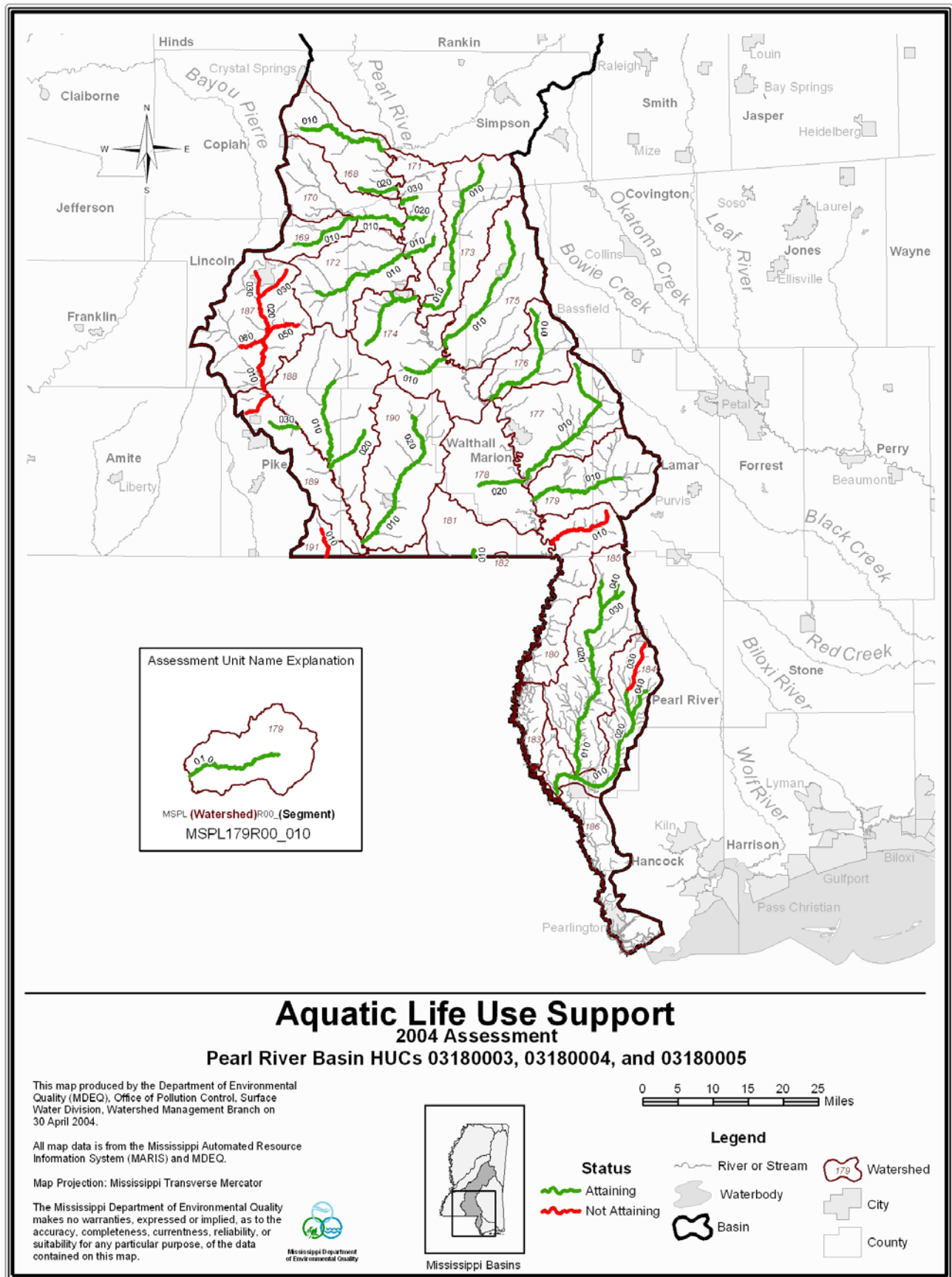


Figure 56: Aquatic Life Use Support Map-Lower Pearl River Basin

Recreation Use Support

Data collected as part of a statewide §303(d) fecal coliform project were used to make the Recreation Use Support assessments. Of the Pearl River Basin’s assessed stream and river miles, approximately 524 miles of perennial rivers and streams are attaining their recreation use, while 377 miles were assessed as not attaining and are considered impaired (Table 24 and Figure 57). Figures 58-59 depict geo-referenced coverages of the Recreation Use Support assessments for the Pearl River Basin.

Table 24: Recreation Use Support-Pearl River Basin

Status	Miles
Attaining	524
Unknown	4,659
Total Not Attaining	377
TMDL not needed	104
TMDL needed	273
Total	5,560

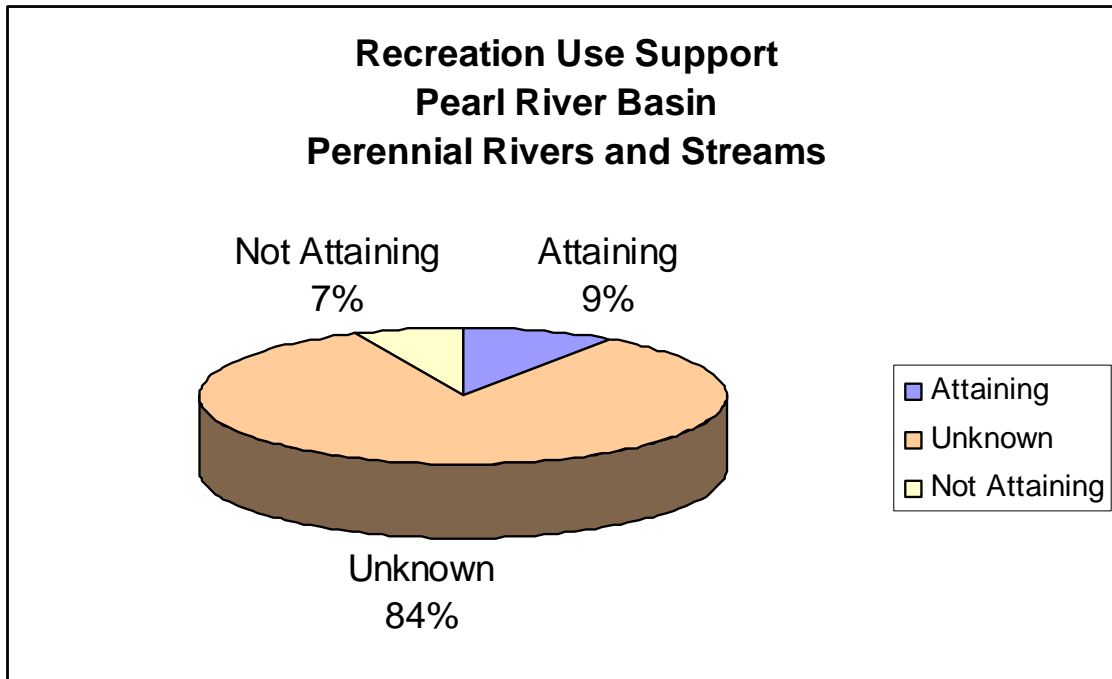


Figure 57: Recreation Use Support- Pearl River Basin

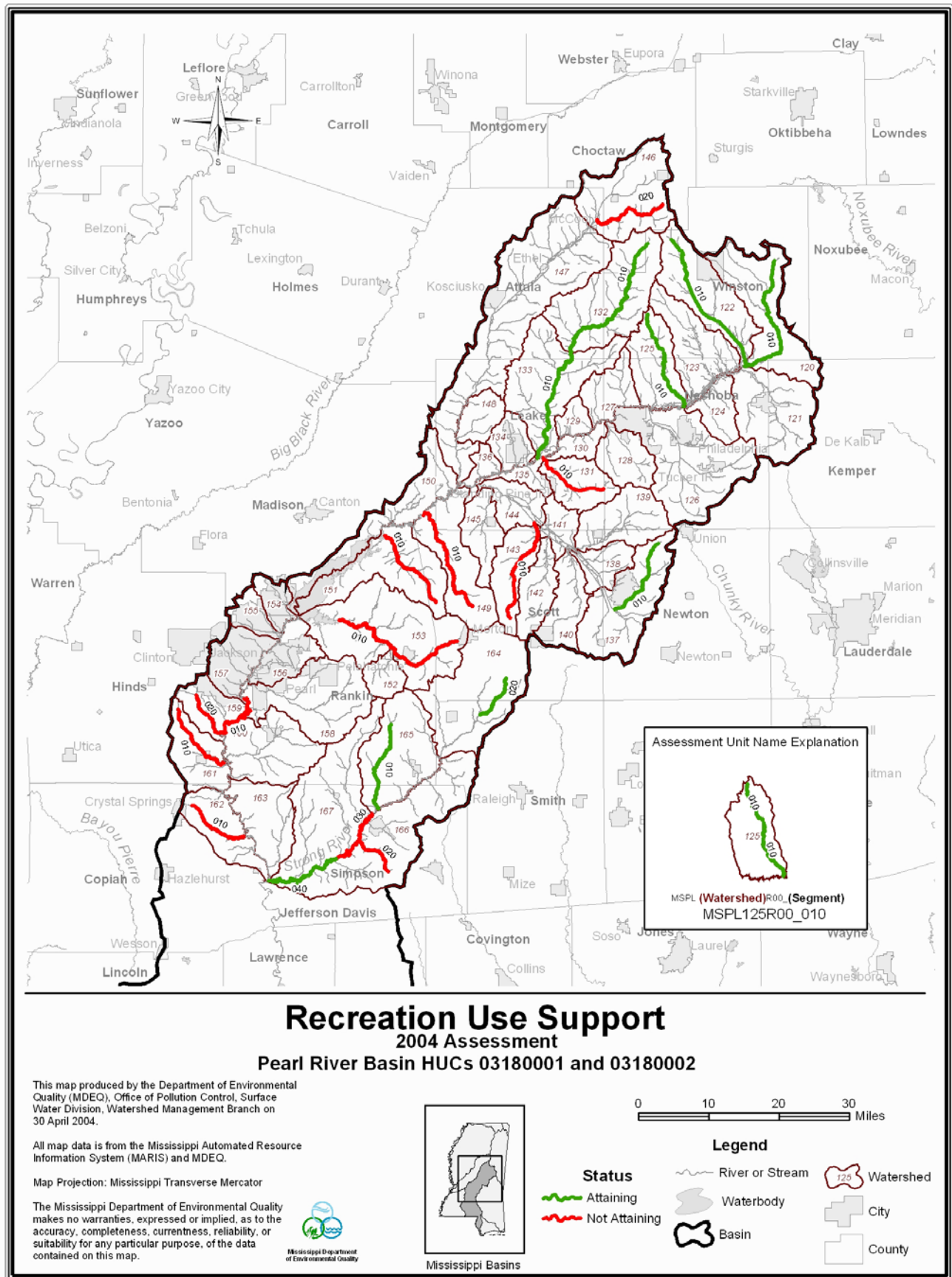


Figure 58: Recreation Use Support Map-Upper Pearl River Basin

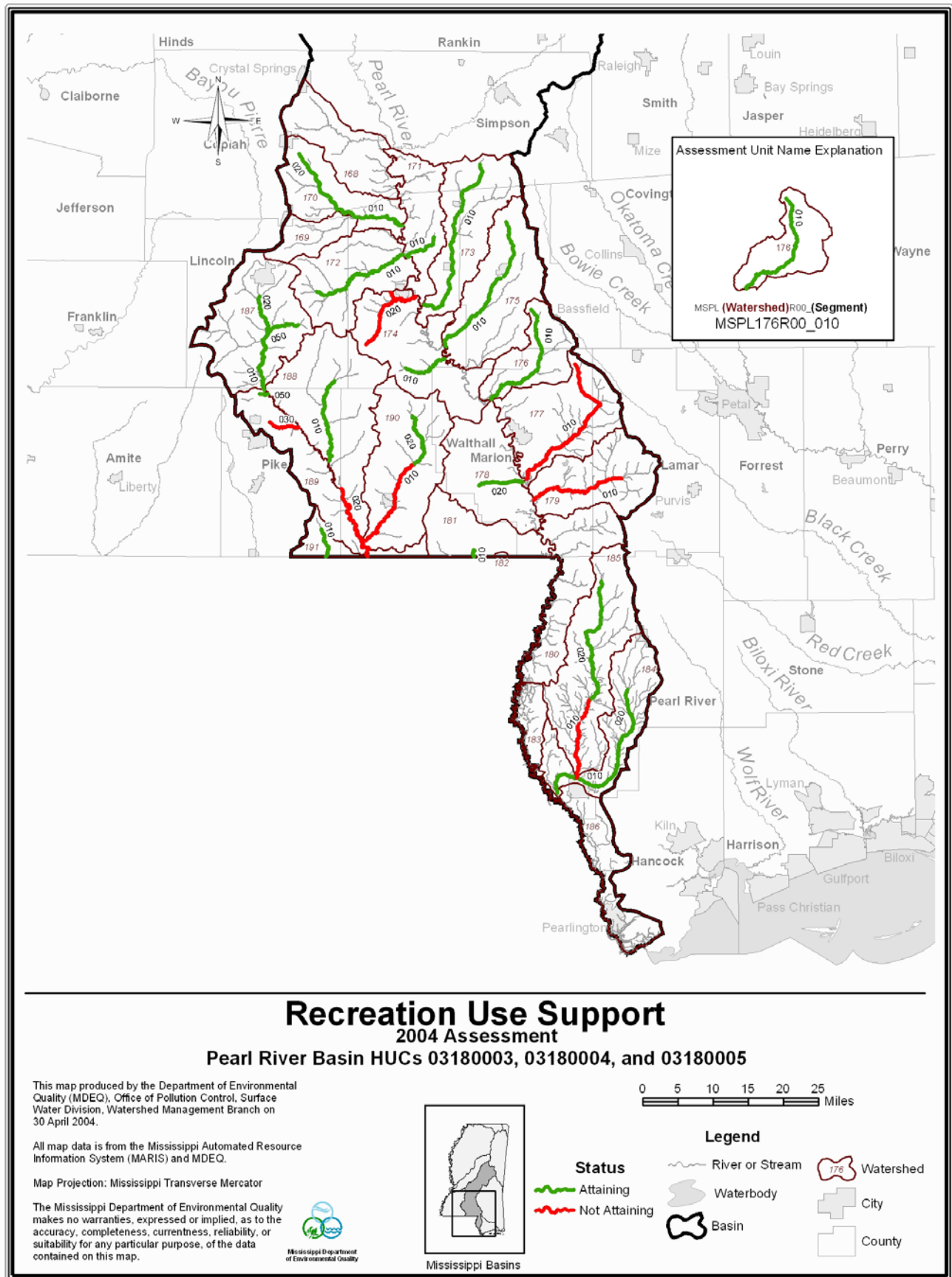


Figure 59: Recreation Use Support Map-Lower Pearl River Basin

Fish Consumption Use Support

Data collected and analyzed as part of MDEQ's fish tissue monitoring program and warranting fish tissue advisories were used to make the Fish Consumption Use Support assessments. Currently, there are five water bodies in the Pearl River Basin with fish tissue advisories. These waters are portions of Little Conehoma Creek, Yockanookany River, Bogue Chitto River, and Pearl River. Therefore, of the Pearl River Basin's assessed stream and river miles, approximately 123 miles of perennial rivers and streams are not attaining their fish consumption use and are considered impaired. These impairments are contributed to the presence of mercury and PCB's in fish tissue. TMDLs have been completed for these pollutants.

Table 25: 2004 §305(b) Assessed Water Bodies-Pearl River Basin

PEARL RIVER					
WATER BODY NAME	ASSESSMENT UNIT	§ 303(d)	COUNTY	USE	ASSESSMENT STATUS
BAHALA CREEK	MSPL170R00_010	N/A	Lawrence	Aquatic Life Support Secondary Contact	Attaining Attaining
LOCATION: FROM CONFLUENCE WITH LITTLE BAHALA CREEK TO MOUTH AT PEARL RIVER					
BAHALA CREEK	MSPL170R00_020	MS170B2E	Copiah, Lawrence, Lincoln	Secondary Contact	Attaining
LOCATION: NEAR TYRUS FROM HEADWATERS TO CONFLUENCE WITH LITTLE BAHALA CREEK					
BEAVER CREEK	MSPL189R00_050	N/A	Pike	Secondary Contact	Attaining
LOCATION: FROM HEADWATERS AT LAKE DIXIE SPRINGS DAM TO MOUTH AT BOGUE CHITTO RIVER					
BIG BRANCH	MSPL185R00_040	N/A	Pearl River	Aquatic Life Support	Attaining
LOCATION: FROM HEADWATERS TO MOUTH AT LITTLE HELL CREEK					
BIG CREEK	MSPL159R00_020	MS159E	Hinds	Aquatic Life Support Secondary Contact	Not Attaining, Biological Impairment Not Attaining, TMDL Completed
LOCATION: NEAR BYRAM FROM HEADWATERS TO MOUTH AT PEARL RIVER					
BIG CREEK	MSPL187R00_060	MS187BE1	Lincoln	Aquatic Life Support	Not Attaining, Biological Impairment
LOCATION: AT BOGUE CHITTO FROM CONFLUENCE WITH SASSERS MILL CREEK TO MOUTH AT BOGUE CHITTO RIVER					
BOGUE CHITTO RIVER	MSPL187R00_010	MSBGCHTRM 2	Lincoln, Pike	Aquatic Life Support Fish Consumption Secondary Contact	Not Attaining, Biological Impairment Not Attaining, TMDL Completed Attaining
LOCATION: FROM CONFLUENCE WITH BOONE CREEK TO JOHNSON'S STATION					
BOGUE CHITTO RIVER	MSPL187R00_020	MSBGCHTRM 1	Lincoln	Aquatic Life Support Fish Consumption Secondary Contact	Not Attaining, Biological Impairment Not Attaining, TMDL Completed Attaining
LOCATION: NEAR ENTERPRISE FROM CONFLUENCE OF HALBERT BRANCH AND EAST BOGUE CHITTO TO CONFLUENCE WITH BOONE CREEK					

Mississippi 2004 §305(b) Water Quality Assessment Report Addendum

PEARL RIVER

WATER BODY NAME	ASSESSMENT UNIT	§ 303(d)	COUNTY	USE	ASSESSMENT STATUS
BOGUE CHITTO RIVER	MSPL189R00_020	MSBGCHTRM 4	Walthall	Fish Consumption	Not Attaining, TMDL Completed
LOCATION: NEAR LEHR FROM HEWY 48 TO LA STATE LINE				Primary Contact (Recr)	Not Attaining, TMDL Completed
BOGUE CHITTO RIVER	MSPL189R00_010	MSBGCHTRM 3	Pike, Walthall	Fish Consumption	Not Attaining, TMDL Completed
LOCATION: AT HOLMESVILLE FROM JOHNSONS STATION TO HWY 48					
BOONE CREEK	MSPL187R00_050	MS187BE	Lincoln	Aquatic Life Support	Not Attaining, Biological Impairment
LOCATION: NEAR BOGUE CHITTO FROM HEADWATERS TO MOUTH AT BOGUE CHITTO RIVER				Secondary Contact	Attaining
BRUSHY CREEK	MSPL162R00_010	MS162E	Copiah	Aquatic Life Support	Attaining
LOCATION: FROM HEADWATERS TO MOUTH AT PEARL RIVER				Secondary Contact	Not Attaining, TMDL Completed
CAMPBELL CREEK	MSPL165R00_010	MS165CE	Rankin, Simpson	Aquatic Life Support	Not Attaining, Biological Impairment
LOCATION: NEAR D'LO FROM HEADWATERS TO MOUTH AT STRONG RIVER				Secondary Contact	Attaining
CANEY CREEK	MSPL164R00_020	N/A	Scott, Smith	Aquatic Life Support	Attaining
LOCATION: FROM HEADWATERS TO MOUTH AT STRONG RIVER				Secondary Contact	Attaining
CASCADE CREEK	MSPL171R00_030	N/A	Lawrence	Aquatic Life Support	Attaining
LOCATION: FROM HEADWATERS TO MOUTH AT PEARL RIVER					
CLABBER CREEK	MSPL189R00_040	MS189E	Pike	Aquatic Life Support	Not Attaining, Biological Impairment
LOCATION: FROM HEADWATERS TO MOUTH AT BOGUE CHITTO RIVER					

Mississippi 2004 §305(b) Water Quality Assessment Report Addendum

PEARL RIVER					
WATER BODY NAME	ASSESSMENT UNIT	§ 303(d)	COUNTY	USE	ASSESSMENT STATUS
CLEAR CREEK	MSPL180R00_010	MS180CE	Lamar, Marion	Aquatic Life Support	Not Attaining, Biological Impairment
LOCATION: NEAR SANDY HOOK FROM HEADWATERS TO MOUTH AT PEARL RIVER					
CLEAR CREEK	MSPL189R00_030	MS189R00_010	Pike	Aquatic Life Support	Attaining
LOCATION: FROM HEADWATERS TO MOUTH AT BOGUE CHITTO RIVER					
CLEAR CREEK	MSPL189R00_030	MS189R00_010	Pike	Secondary Contact	Not Attaining
CLEAR CREEK	MSPL189R00_030	MS189R00_010	Pike	Aquatic Life Support	Attaining
CLEAR CREEK	MSPL189R00_030	MS189R00_010	Pike	Secondary Contact	Not Attaining
COFFEE BOGUE CREEK	MSPL149R00_010	MS149E	Scott	Aquatic Life Support	Not Attaining, Biological Impairment
LOCATION: NEAR BRANCH FROM HEADWATERS TO MOUTH AT PEARL RIVER					
COFFEE BOGUE CREEK	MSPL149R00_010	MS149E	Scott	Secondary Contact	Not Attaining
CONEHATTA CREEK	MSPL137R00_010	MS137CE	Newton	Aquatic Life Support	Not Attaining, Biological Impairment
LOCATION: NEAR HAZEL FROM HEADWATERS TO MOUTH AT BIG CANAL					
CONEHATTA CREEK	MSPL137R00_010	MS137CE	Newton	Secondary Contact	Attaining
CONEHOMA CREEK	MSPL147R00_020	MS147M2	Attala	Fish Consumption	Not Attaining, TMDL Completed
LOCATION: NEAR KOSCIUSKO FROM HWY 35 TO MOUTH AT YOCKANOOKANY RIVER					
COPIAH CREEK	MSPL168R00_010	N/A	Copiah	Aquatic Life Support	Attaining
LOCATION: FROM HEADWATERS TO MOUTH AT PEARL RIVER					
DABBS CREEK	MSPL167R00_010	MS167DE	Rankin, Simpson	Aquatic Life Support	Not Attaining, Biological Impairment
LOCATION: NEAR D'LO FROM HEADWATERS TO MOUTH AT STRONG RIVER					
EAST BOGUE CHITTO RIVER	MSPL187R00_030	MSBGCHTRM1	Lincoln	Aquatic Life Support	Not Attaining, Biological Impairment
LOCATION: FROM HEADWATERS TO CONFLUENCE WITH BOGUE CHITTO RIVER					

Mississippi 2004 §305(b) Water Quality Assessment Report Addendum

PEARL RIVER					
WATER BODY NAME	ASSESSMENT UNIT	§ 303(d)	COUNTY	USE	ASSESSMENT STATUS
EAST HOBOLOCHITTO CREEK	MSPL184R00_020	MS184HE	Pearl River	Aquatic Life Support Secondary Contact	Attaining Attaining
LOCATION: FROM HEADWATERS AT JUNIPER CREEK TO CONFLUENCE WITH UNNAMED TRIB SOUTH OF ANCHOR LAKE					
EAST HOBOLOCHITTOE CREEK	MSPL184R00_010	MS184HE	Pearl River	Aquatic Life Support Secondary Contact	Attaining Attaining
LOCATION: FROM CONFLUENCE WITH UNNAMED TRIB SOUTH OF ANCHOR LAKE TO MOUTH AT PEARL RIVER					
EUTACUTACHEE CREEK	MSPL152R00_010	MS152E	Rankin	Aquatic Life Support	Not Attaining, Biological Impairment
LOCATION: NEAR PELAHATCHIE FROM HEADWATERS TO MOUTH AT PELAHATCHIE CREEK					
FAIR RIVER	MSPL172R00_010	MS172FE	Lawrence, Lincoln	Aquatic Life Support Secondary Contact	Attaining Attaining
LOCATION: NEAR FERGUSON FROM HEADWATERS TO MOUTH AT PEARL RIVER					
FANNEGUSHA CREEK	MSPL151R00_010	MS151FE	Rankin, Scott	Aquatic Life Support Secondary Contact	Not Attaining, Biological Impairment Not Attaining
LOCATION: NEAR BRANCH FROM HEADWATERS TO MOUTH AT PEARL RIVER					
HALBERT BRANCH	MSPL187R00_040	MS187HE	Lincoln	Aquatic Life Support	Not Attaining, Biological Impairment
LOCATION: NEAR BROOKHAVEN FROM HEADWATERS TO CONFLUENCE WITH EAST BOGUE CHITTO RIVER AT HEADWATERS OF BOGUE CHITTO RIVER					
HALLS CREEK	MSPL174R00_020	MSPL174R00_020	Lawrence	Aquatic Life Support Secondary Contact	Attaining Not Attaining
LOCATION: FROM HEADWATERS TO MOUTH AT PEARL RIVER					
HANGING MOSS CREEK	MSPL155R00_010	MS155E	Hinds, Rankin	Aquatic Life Support	Not Attaining, Biological Impairment
LOCATION: AT JACKSON FROM HEADWATERS TO MOUTH AT PEARL RIVER					

PEARL RIVER					
WATER BODY NAME	ASSESSMENT UNIT	§ 303(d)	COUNTY	USE	ASSESSMENT STATUS
HOLIDAY CREEK	MSPL176R00_010	MS176E	Jefferson Davis, Marion	Aquatic Life Support Secondary Contact	Attaining Attaining
LOCATION: NEAR MORGANTOWN FROM HEADWATERS TO MOUTH AT PEARL RIVER					
HONTOKALO CREEK	MSPL140R00_010	N/A	Scott	Aquatic Life Support	Attaining
LOCATION: NEAR STEEL FROM HEADWATERS TO MOUTH AT LITTLE CANAL					
HUGHES CREEK	MSPL122R00_020	MS122E1	Winston	Aquatic Life Support	Not Attaining, Biological Impairment
LOCATION: AT LOUISVILLE FROM HEADWATES TO COUNTY ROAD AT ESTES					
IRVING CREEK	MSPL171R00_020	N/A	Lawrence	Aquatic Life Support	Attaining
LOCATION: FROM HEADWATERS TO MOUTH AT PEARL RIVER					
JUNIPER CREEK	MSPL184R00_030	MS184JE	Pearl River	Aquatic Life Support	Not Attaining, Biological Impairment
LOCATION: NEAR MILLARD FROM HEADWATERS TO MOUTH AT EAST HOBOLOCHITTO CREEK					
KENTAWKA CREEK	MSPL126R00_010	N/A	Neshoba	Aquatic Life Support	Attaining
LOCATION: FROM HEADWATERS TO MOUTH AT PEARL RIVER					
LEATHERWOOD CREEK	MSPL188R00_020	N/A	Pike, Walthall	Aquatic Life Support	Attaining
LOCATION: FROM HEADWATERS TO MOUTH AT BOGUE CHITTO RIVER					
LIMESTONE CREEK	MSPL163R00_010	N/A	Simpson	Aquatic Life Support	Attaining
LOCATION: FROM HEADWATERS TO MOUTH AT PEARL RIVER					

Mississippi 2004 §305(b) Water Quality Assessment Report Addendum

PEARL RIVER

WATER BODY NAME	ASSESSMENT UNIT	§ 303(d)	COUNTY	USE	ASSESSMENT STATUS
LITTLE BAHALA CREEK	MSPL169R00_010	N/A	Lawrence, Lincoln	Aquatic Life Support	Attaining
LOCATION: FROM HEADWATERS TO MOUTH AT BIG BAHALA CREEK					
LITTLE HELL CREEK	MSPL185R00_030	N/A	Pearl River	Aquatic Life Support	Attaining
LOCATION: FROM HEADWATERS TO MOUTH AT WEST HOBOLOCHITTO CREEK					
LOBUTCHA CREEK	MSPL133R00_010	MS133L	Attala, Leake	Aquatic Life Support	Not Attaining, Biological Impairment
LOCATION: FROM CONFLUENCE OF UNNAMED TRIB UPSTREAM OF CONFLUENCE WITH PAILEY CREEK TO MOUTH AT PEARL RIVER					
LOBUTCHA CREEK	MSPL132R00_010	MS132E	Attala, Choctaw, Winston	Aquatic Life Support	Not Attaining, Biological Impairment
LOCATION: NEAR ZAMA FROM HEADWATERS TO CONFLUENCE WITH UNNAMED TRIB UPSTREAM OF CONFLUENCE WITH PAILEY CREEK					
LOWER LITTLE CREEK	MSPL179R00_010	MS179E	Lamar, Marion	Aquatic Life Support	Attaining
LOCATION: NEAR HUB FROM HEADWATERS AT HURRICANE CREEK TO MOUTH AT PEARL RIVER					
LYNCH CREEK	MSPL157R00_010	MS157L	Hinds	Aquatic Life Support	Not Attaining, Biological Impairment
LOCATION: AT JACKSON FROM HEADWATERS TO MOUTH AT PEARL RIVER					
MAGEES CREEK	MSPL190R00_020	N/A	Walthall	Aquatic Life Support	Attaining
LOCATION: FROM HEADWATERS TO CONFLUENCE WITH VARNELL CREEK					
MCGEES CREEK	MSPL190R00_010	MS190E	Walthall	Aquatic Life Support	Attaining
LOCATION: FROM CONFLUENCE WITH VARNELL CREEK TO MOUTH AT BOGUE CHITTO RIVER					
				Primary Contact (Recr)	Not Attaining, TMDL Completed

PEARL RIVER

WATER BODY NAME	ASSESSMENT UNIT	§ 303(d)	COUNTY	USE	ASSESSMENT STATUS
MORAN CREEK	MSPL184R00_040	N/A	Pearl River	Aquatic Life Support	Attaining
LOCATION: FROM HEADWATERS TO MOUTH AT EAST HOBOLOCHITTO CREEK					
NANIH WAIYA CREEK	MSPL120R00_010	N/A	Neshoba, Winston	Secondary Contact	Attaining
LOCATION: FROM HEADWATERS TO MOUTH AT PEARL RIVER					
NOXAPATER CREEK	MSPL123R00_010	MS123NE	Neshoba, Winston	Aquatic Life Support	Not Attaining, Biological Impairment
LOCATION: NEAR STALLO FROM HEADWATERS TO MOUTH AT PEARL RIVER					
OWL CREEK	MSPL121R00_010	MS121O	Neshoba	Aquatic Life Support	Not Attaining, Biological Impairment
LOCATION: NEAR PRESTON FROM HEADWATERS TO MOUTH AT BOGUE CHITTO CREEK					
PEARL RIVER	MSPL150R00_010	MSUMPRLR2 M	Leake	Fish Consumption	Not Attaining, TMDL Completed
LOCATION: NEAR PIGGTOWN FROM HWY 25 TO LEAKE COUNTY WATER PARK					
PEARL RIVER	MSPL159R00_010	MSUMPRLR1 M2	Hinds, Rankin	Primary Contact (Recr)	Not Attaining, TMDL Completed
LOCATION: NEAR BYRAM FROM JACKSON POTW OUTFALL TO CONFLUENCE WITH BIG CREEK					
PEARL RIVER	MSPL178R00_010	N/A	Marion	Primary Contact (Recr)	Attaining
LOCATION: FROM WATERSHED 178 BOUNDARY TO CONFLUENCE WITH HURRICAN CREEK AT WATERSHED 181 BOUNDARY					
PEGIES CREEK	MSPL168R00_020	N/A	Copiah	Aquatic Life Support	Attaining
LOCATION: FROM HEADWATERS TO MOUTH AT PEARL RIVER					

PEARL RIVER					
WATER BODY NAME	ASSESSMENT UNIT	§ 303(d)	COUNTY	USE	ASSESSMENT STATUS
PELAHATCHIE CREEK	MSPL153R00_010	MS153PE	Rankin, Scott	Secondary Contact	Not Attaining
LOCATION: NEAR FANNIN FROM HEADWATERS AT MORTON CREEK TO ROSS BARNETT FLOOD POOL					
PINISHOOK CREEK	MSPL125R00_010	MS125PE	Neshoba, Winston	Aquatic Life Support	Not Attaining, Biological Impairment
LOCATION: NEAR BURNSIDE FROM HEADWATERS TO MOUTH AT PEARL RIVER				Secondary Contact	Attaining
PRETTY BRANCH	MSPL171R00_010	MS171PE	Lawrence	Aquatic Life Support	Attaining
LOCATION: FROM HEADWATERS TO MOUTH AT PEARL RIVER				Secondary Contact	Attaining
PUSHEPATAPA CREEK	MSPL181R00_010	MS181PE	Walthall	Aquatic Life Support	Attaining
LOCATION: NEAR STATE LINE FROM HEADWATERS TO LA STATE LINE				Secondary Contact	Attaining
RED CANE CREEK	MSPL151R00_020	MS151FM2	Rankin	Aquatic Life Support	Not Attaining, Biological Impairment
LOCATION: NEAR LEESBURG FROM HEADWATERS TO MOUTH AT FANNEGUSHA CREEK					
RHODES CREEK	MSPL161R00_010	MS161E	Hinds	Aquatic Life Support	Not Attaining, Biological Impairment
LOCATION: NEAR ROSEMARY FROM HEADWATERS TO THE PEARL RIVER				Secondary Contact	Not Attaining, TMDL Completed
RIALS CREEK	MSPL166R00_020	MS166RE	Simpson	Aquatic Life Support	Attaining
LOCATION: FROM HEADWATERS TO MOUTH AT STRONG RIVER				Secondary Contact	Not Attaining, TMDL Completed
RICHLAND CREEK	MSPL158R00_010	MS158E	Rankin	Aquatic Life Support	Not Attaining, Biological Impairment
LOCATION: NEAR RICHLAND FROM HEADWATERS TO MOUTH AT PEARL RIVER					

PEARL RIVER						
WATER BODY NAME	ASSESSMENT UNIT	§ 303(d)	COUNTY	USE	ASSESSMENT STATUS	
SHOCKALOO CREEK	MSPL143R00_010	MS143E	Leake, Scott	Aquatic Life Support Secondary Contact	Not Attaining, Biological Impairment Not Attaining	
LOCATION: NEAR FOREST FROM HEADWATERS TO CONFLUENCE WITH LITTLE CANAL						
SILVER CREEK	MSPL173R00_010	MS173E	Jefferson Davis, Lawrence, Simpson	Aquatic Life Support Secondary Contact	Attaining Attaining	
LOCATION: NEAR MONTICELLO FROM HEADWATERS TO MOUTH AT PEARL RIVER						
SILVER CREEK	MSPL191R00_010	MS191SE	Pike	Aquatic Life Support Secondary Contact	Not Attaining, Biological Impairment Attaining	
LOCATION: FROM HEADWATERS TO LA STATE LINE						
SIPSEY CREEK	MSPL139R00_010	N/A	Neshoba, Newton, Scott	Aquatic Life Support	Attaining	
LOCATION: FROM HEADWATERS TO MOUTH AT BIG CANAL						
STANDING PINE CREEK	MSPL131R00_010	N/A	Leake	Aquatic Life Support Secondary Contact	Attaining Not Attaining, TMDL Completed	
LOCATION: FROM HEADWATERS TO MOUTH AT PEARL RIVER						
STEEN CREEK	MSPL160R00_010	N/A	Rankin	Aquatic Life Support	Attaining	
LOCATION: FROM HEADWATERS TO MOUTH AT PEARL RIVER						
STRONG RIVER	MSPL164R00_010	MSSTRONGE	Smith	Aquatic Life Support	Not Attaining, Biological Impairment	
LOCATION: FROM HEADWATERS AT CANEY CREEK TO CONFLUENCE WITH PURVIS CREEK AT WATERSHED 164 BOUNDARY						
STRONG RIVER	MSPL166R00_040	N/A	Simpson	Primary Contact (Recr)	Attaining	
LOCATION: FROM CONFLUENCE WITH WESTVILLE CREEK TO MOUTH AT PEARL RIVER						

Mississippi 2004 §305(b) Water Quality Assessment Report Addendum

PEARL RIVER

WATER BODY NAME	ASSESSMENT UNIT	§ 303(d)	COUNTY	USE	ASSESSMENT STATUS
STRONG RIVER	MSPL166R00_030	MSPL166R00_030	Simpson	Primary Contact (Recr)	Not Attaining
LOCATION: FROM UNNAMED TRIB AT HWY 49 TO CONFLUENCE WITH WESTVILLE CREEK					
STRONG RIVER	MSPL166R00_010	MSSTRONGE	Rankin, Simpson, Smith	Aquatic Life Support	Not Attaining, Biological Impairment
LOCATION: FROM CONFLUENCE WITH PURVIS CREEK TO CONFLUENCE WITH CAMBELL CREEK					
SUGAR BOGUE	MSPL149R00_020	MS149S	Scott	Aquatic Life Support	Not Attaining, Biological Impairment
LOCATION: NEAR FORKVILLE FROM HEADWATERS TO COFFEE BOGUE					
TALLABOGUE CREEK	MSPL142R00_010	MS142E1	Scott	Aquatic Life Support	Not Attaining, Biological Impairment
LOCATION: NEAR FOREST FROM HEADWATERS TO CONFLUENCE WITH LITTLE CANAL					
TALLAHAGA CREEK	MSPL122R00_010	MS122E	Neshoba, Winston	Aquatic Life Support Secondary Contact	Not Attaining, Biological Impairment Attaining
LOCATION: NEAR CLAYTOWN FROM HEADWATERS TO BIG SLOUGH					
TEN MILE CREEK	MSPL178R00_020	MS178TE	Marion	Aquatic Life Support Secondary Contact	Attaining Attaining
LOCATION: NEAR CHERAW FROM HEADWATERS TO MOUTH AT PEARL RIVER					
TIBBY CREEK	MSPL146R00_020	MS146TE	Attala, Choctaw	Aquatic Life Support Secondary Contact	Attaining Not Attaining
LOCATION: NEAR MCCOOL FROM HEADWATERS TO MOUTH AT YOCKANOOKANY RIVER					
TILTON CREEK	MSPL174R00_010	MS174E	Lawrence, Marion	Aquatic Life Support Secondary Contact	Attaining Attaining
LOCATION: NEAR TOLTON FROM HEADWATERS TO MOUTH AT PEARL RIVER					

PEARL RIVER					
WATER BODY NAME	ASSESSMENT UNIT	§ 303(d)	COUNTY	USE	ASSESSMENT STATUS
TOPISAW CREEK	MSPL188R00_010	MS188TE	Lincoln, Pike	Aquatic Life Support Secondary Contact	Attaining Attaining
LOCATION: NEAR HOLMESVILLE FROM HEADWATERS TO MOUTH AT BOGUE CHITTO RIVER					
TOWN CREEK	MSPL134R00_010	MS134T	Leake	Aquatic Life Support	Not Attaining, Biological Impairment
LOCATION: AT CARTHAGE FROM HEADWATERS TO MOUTH AT PEARL RIVER					
TURTLE SKIN CREEK	MSPL186R00_010	MS186T	Hancock	Aquatic Life Support	Not Attaining, Biological Impairment
LOCATION: NEAR SANTA ROSA FROM HEADWATERS TO CONFLUENCE WITH MIKES RIVER					
TUSCOLAMETA CREEK	MSPL144R00_010	MS144E	Leake	Aquatic Life Support	Not Attaining, Biological Impairment
LOCATION: NEAR WALUNUT GROVE FROM CONFLUENCE OF BIG AND LITTLE CANAL TO MOUTH AT PEARL RIVER					
UPPER LITTLE CREEK	MSPL177R00_010	MS177E	Lamar, Marion	Aquatic Life Support Secondary Contact	Attaining Not Attaining
LOCATION: NEAR LAMPTON FROM HEADWATERS TO MOUTH AT PEARL RIVER					
WEST HOBOLOCHITTO CREEK	MSPL185R00_010	MS185E1	Pearl River	Aquatic Life Support Secondary Contact	Attaining Not Attaining
LOCATION: FROM CONFLUENCE WITH KENNEDY CREEK TO CONFLUENCE WITH EAST HOBOLOCHITTO CREEK					
WEST HOBOLOCHITTO CREEK	MSPL185R00_020	N/A	Pearl River	Aquatic Life Support Secondary Contact	Attaining Attaining
LOCATION: FROM HEADWATERS TO CONFLUENCE WITH KENNEDY CREEK					
WHITE SAND CREEK	MSPL175R00_010	MS175WE	Jefferson Davis, Lawrence	Aquatic Life Support Secondary Contact	Attaining Attaining
LOCATION: FROM HEADWATERS TO MOUTH AT PEARL RIVER					

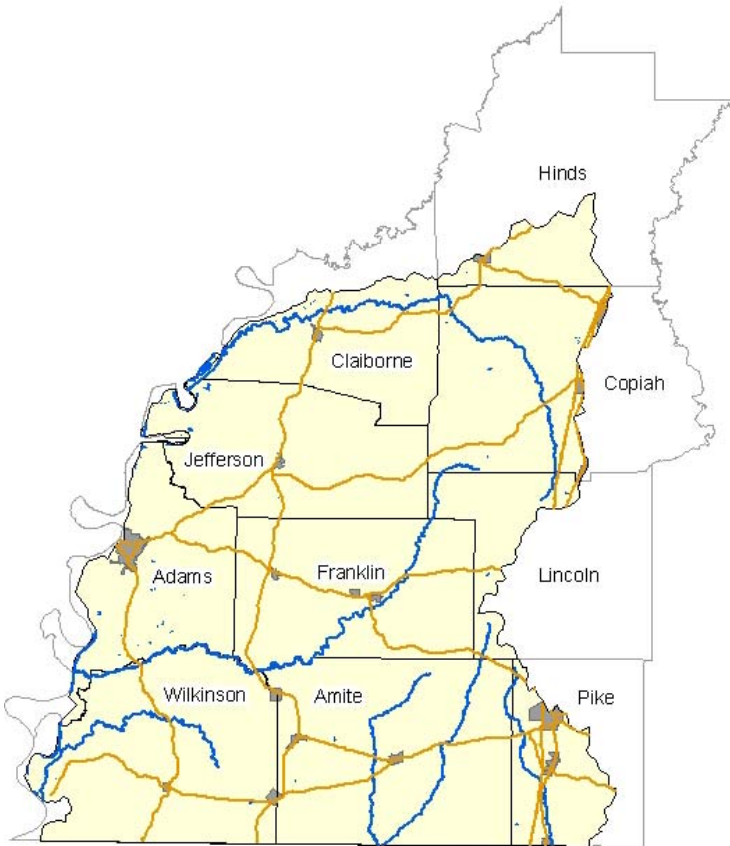
PEARL RIVER

WATER BODY NAME	ASSESSMENT UNIT	§ 303(d)	COUNTY	USE	ASSESSMENT STATUS
WOLF CREEK	MSPL126R00_020	MS126E1	Neshoba	Aquatic Life Support	Not Attaining, Biological Impairment
LOCATION: NEAR PHILADELPHIA FROM HEADWATERS NORTH WEST OF FAIRVIEW TO MOUTH AT KENTAWKA CANAL					
YOCKANOOKANY RIVER	MSPL146R00_010	MS146YE	Attala, Choctaw	Aquatic Life Support	Attaining
LOCATION: NEAR MCCOOL FROM HEADWATERS TO WATERSHED 147 BOUNDARY				Fish Consumption	Not Attaining, TMDL Completed
YOCKANOOKANY RIVER	MSPL147R00_010	MS147M1	Attala, Leake	Fish Consumption	Not Attaining, TMDL Completed
LOCATION: NEAR THOMASTOWN FROM HWY 35 AT KOSCIUSKO TO MOUTH AT PEARL RIVER					

SOUTH INDEPENDENT STREAMS BASIN

Basin Description

The South Independent Streams Basin is located in southwest Mississippi and consists of those streams which drain into the Mississippi River below the Big Black River and streams which drain into Louisiana, west of the Pearl River Basin. This 4,418 square miles area comprises all or part of 11 counties in southwestern Mississippi (Figure 60).



Major streams in the basin include the Homochitto River, Bayou Pierre, Tangipahoa River and the East and West Forks of the Amite River. For the MDEQ Basin Planning Approach and §305(b) assessment purposes, this basin also includes the Lower Mississippi River portion of the Mississippi River Basin below the city of Vicksburg.

Most of the region is made up of low, rolling hills and is largely forested. On the western side of the basin, high bluffs dominate the topography as the land meets the Mississippi River. The two largest urban areas in the basin are located on the Mississippi River. These river ports are the cities of Natchez and Vicksburg.

Figure 60: South Independent Streams Basin (MDEQ)

The population for the counties within the South Independent Streams Basin was estimated in 2000 at 439,933. There has been a 3% increase since 1990. The largest county populations are found in Adams, Warren, Pike, and Lincoln counties.

Land Use

The primary land use in the South Independent Streams Basin is forestry or silviculture. Amite County leads the state in forestry production and is 14th in the nation. The next principal land use in the South Independent Streams Basin is agriculture with some concentrated areas of industry around the cities of Natchez, Brookhaven, and McComb. A depiction of the major land cover in the basin is given in Figure 61.

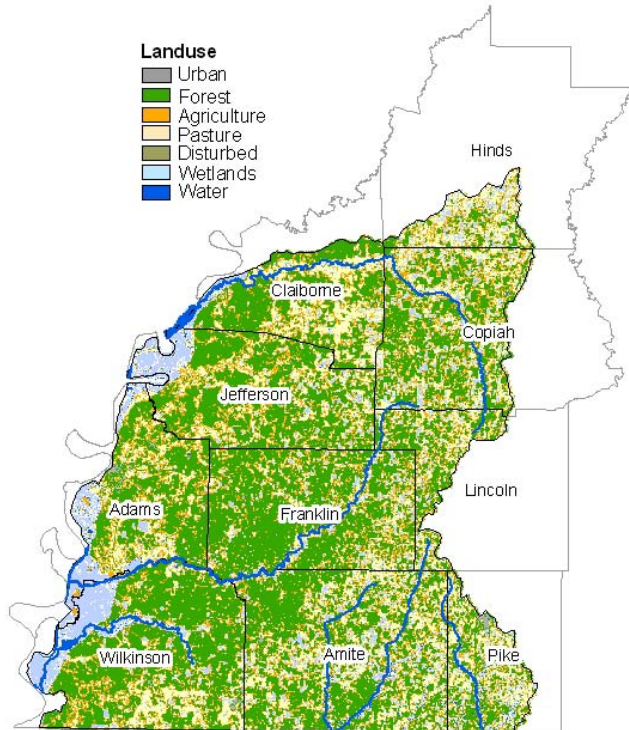
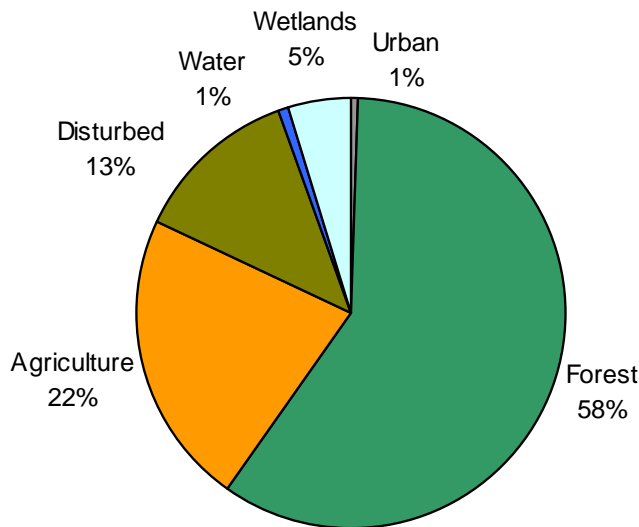


Figure 61: Major Land Cover in the South Independent Streams Basin (MARIS)

In this basin, *Urban* areas make up only 1% of the land cover (Figure 62). Overall,

land cover is dominated by natural *Forest* (58%), which includes evergreen, deciduous and mixed-forested areas. *Agricultural* (pastures and croplands) areas comprise 22% of the land use in the basin.



Disturbed areas such as strip mines, gravel pits, sandy areas, barren, and transitional areas comprise 13% of the basin. *Water* sources, which include streams, lakes, reservoir and estuaries, and *Wetland*, which includes forested and nonforested wetlands comprise the remaining 15% of the basin.

Figure 62: Distribution of Land Cover in the South Independent Streams Basin (MARIS)

Water Resources

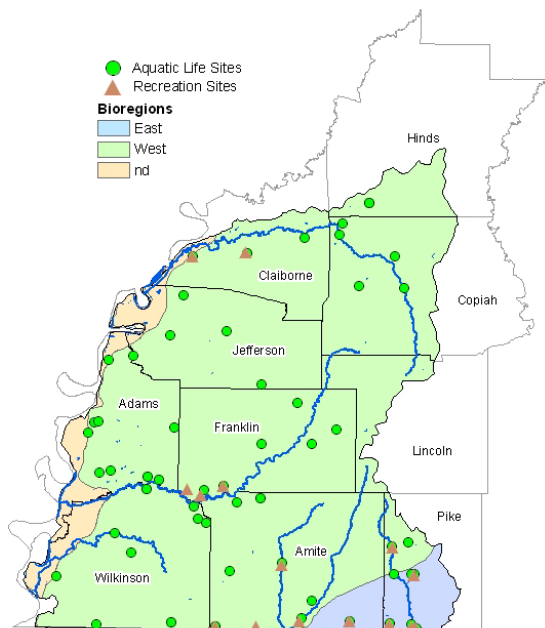
The South Independent Streams Basin has a total of 7,499 miles of perennial and intermittent rivers and streams. The majority of these water bodies are classified as Fish and Wildlife streams in the State's water quality standards with portions of several streams and rivers classified for Recreation. These include Bayou Pierre, Little Bayou Pierre, East Fork and West Fork of the Amite River, and Homochitto River. Most streams in the basin have good flow, clear water, and sandy bottoms. Near the Mississippi River, tributaries become flatter and are subject to the river's rise and fall which greatly affect the dynamics of these water bodies.

Several public reservoirs and lakes can be found in the South Independent Streams Basin. These include Lake Tangipahoa in Percy Quinn State Park near McComb, Natchez State Park Lake, and Lake Mary. Lake Tangipahoa (Percy Quinn State Park Lake) and Clear Springs Lake are classified for recreational use. The South Independent Streams Basin has five federally threatened and four federally endangered species. This basin also includes several water bodies proposed for review as potential Mississippi Natural and Scenic Waterways System water bodies: Bayou Pierre, Homochitto River, Tangipahoa River, Buffalo River and the East and West Forks of the Amite River.

Surface Water Assessment

Designated Use Support

The assessments for the South Independent Streams Basin were made based on data from 78 sampling locations in streams and rivers across the basin sampled by MDEQ as part of the §303(d)/IBI wadeable streams project (M-BISQ) and the §303(d) fecal coliform



monitoring project (Figure 63). The perennial streams where the monitoring stations were located represented the mainstem drainage for each 11-digit watershed in the basin. Use support status for the basin is presented and summarized with causes and sources of impairment. No lake acreage was assessed in this report due to the lack of applicable lake monitoring data available for assessment in the basin during this reporting period and no fish tissue advisories are in effect for this basin.

Figure 63: South Independent Streams Basin Monitoring Stations and M-BISQ Bioregions

MDEQ assessed approximately 15% (824 miles) of the total 5,347 perennial miles of streams and rivers in the South Independent Streams Basin. The status of water quality on the remaining 85% (4,523 miles) of the basin's perennial rivers and streams is unknown. A summary of use support for the basin's assessed rivers and streams is found in Table 26 and Figure 64. For water bodies with multiple assessed uses, the EPA Assessment Database (ADB) summary under represents the actual amount of attaining mileage assessed. For water bodies with multiple uses assessed, the ADB automatically assigns the water body mileages according to the Integrated Reporting category system. This categorization system assigns a water body to only one of five categories:

Category 1: Attaining all uses

Category 2: Attaining some uses but insufficient information for assessment of other uses

Category 3: Insufficient information to assess any use

Category 4: Not attaining a use but a TMDL is not necessary

Category 5: Not attaining a use and a TMDL is needed

EPA defines a Category 1 water as having sufficient data to prove there is no impairment for any potential designated use of that water body. Due to EPA requirements for Category 1 that all uses are assessed, Mississippi currently has no water bodies assigned to Category 1. If a water body is attaining one use but is not attaining another use, it is assigned to one of the not attaining categories (Category 4 or 5). Therefore, the amounts of waters attaining a designated use are under represented in the following table.

Of the assessed stream and river miles in the South Independent Streams Basin, approximately 4% are in category 2 for attaining some uses but unknown for remaining water body uses, and 1% are in category 4 as not attaining one or more designated uses but a TMDL is not necessary. Waters in category 5 as not attaining and needing a TMDL make up 10% of the assessed water bodies. The status of the remaining 85% of water bodies in the South Independent Streams Basin is unknown and these waters are reflected in category 3. Of the 537 miles of waters in category 5, 99% (530 miles) are assessed as being biologically impaired. Stressor Identification studies will be conducted to determine the actual cause and source of the impairment for these waters. Waters in category 5 can be found listed in Section A (Water Bodies with Monitoring Data) in the South Independent Streams Basin section of the 2004 §303(d) list. Please refer to Table 30 at the end of the South Independent Streams Basin section for a tabular listing of all assessments. This table also provides the necessary information to cross-reference the §305(b) assessments with the §303(d) list.

Table 26: Summary of South Independent Streams Basin Use Support Assessments- Rivers and Streams

Degree of Use Support	Total Size in Miles
Category 1: Attaining All Uses	
Category 2: Attaining Some Uses but Unknown for Other Uses	234
Category 3: Unknown/Insufficient Data for Assessment	6,675
Intermittent Miles	4,523
Perennial Miles	2,152
Category 4: Not Attaining – No TMDL Needed	53
A. TMDL Completed	53
B. Impairment Caused by Pollution	0
C. Expected to Attain Use before Next Assessment	0
Category 5: Not Attaining – TMDL Needed	537
A. Pollutant Identified	7
B. Biological Impairment- Cause Unknown	530
Total Miles	7,499

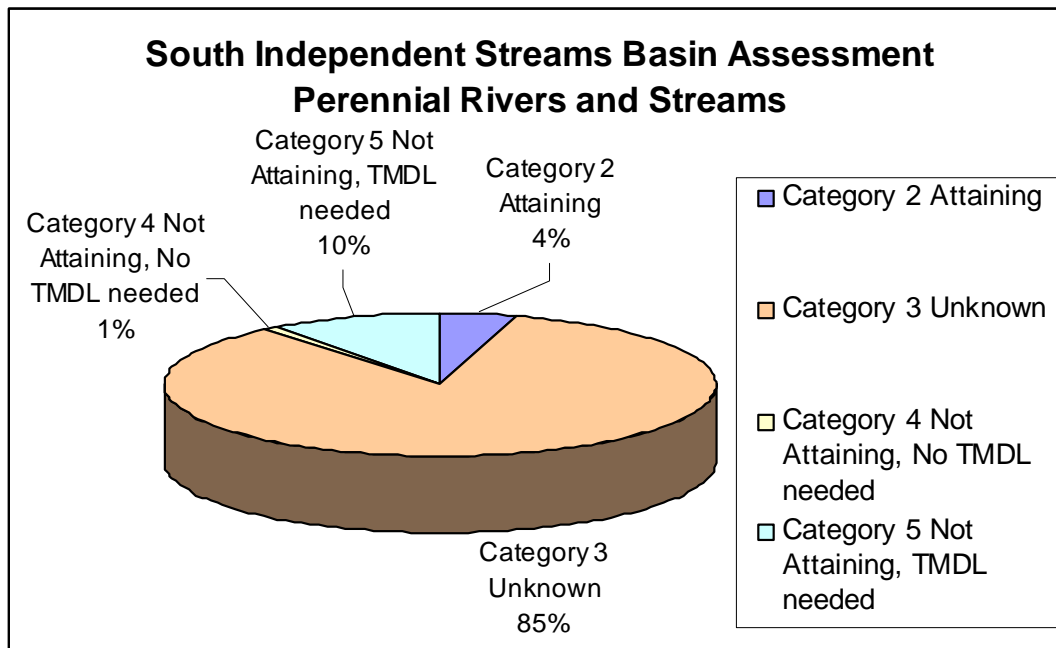


Figure 64: South Independent Streams Basin Assessment of Perennial Rivers and Streams

Causes and Sources of Impairment of Designated Uses

Causes and sources of impairment were determined for streams and rivers having one or more uses impaired. Total assessed sizes of streams and rivers affected by various cause categories are given in Table 27 and Figure 65. For the majority of miles of assessed rivers not meeting their designated uses, impairment is caused by unknown pollutants or other factors contributing to biological impairment. In these cases, actual monitoring has detected biological impairment but the exact pollutant cause has yet to be determined. Other causes of impairment noted in the basin are from pathogens. For these impaired waters, the next step in the state’s water quality management process will be to conduct stressor identification analyses to identify the stressor(s) causing the impairment. Once the stressor(s) are identified, the Total Maximum Daily Load (TMDL) process, where applicable, can proceed. For stressors identified that are not applicable to the TMDL process, other water quality management actions will be needed. The source of impairments for waters assessed in the South Independent Streams Basin is unknown. As stated above, the majority of impairment was determined to be biological and therefore sources of the impairment are yet to be determined.

Table 27: Summary of Impairment Causes-South Independent Streams Basin

Cause Categories	Total Miles
Biological Impairment*	
Pathogens	
Total	

* Note: Definitive cause identification is not possible at the time of assessment. Category applies to waters where biological indicators (macroinvertebrates) were used and impairment was indicated but further investigation needed to quantify pollutant.

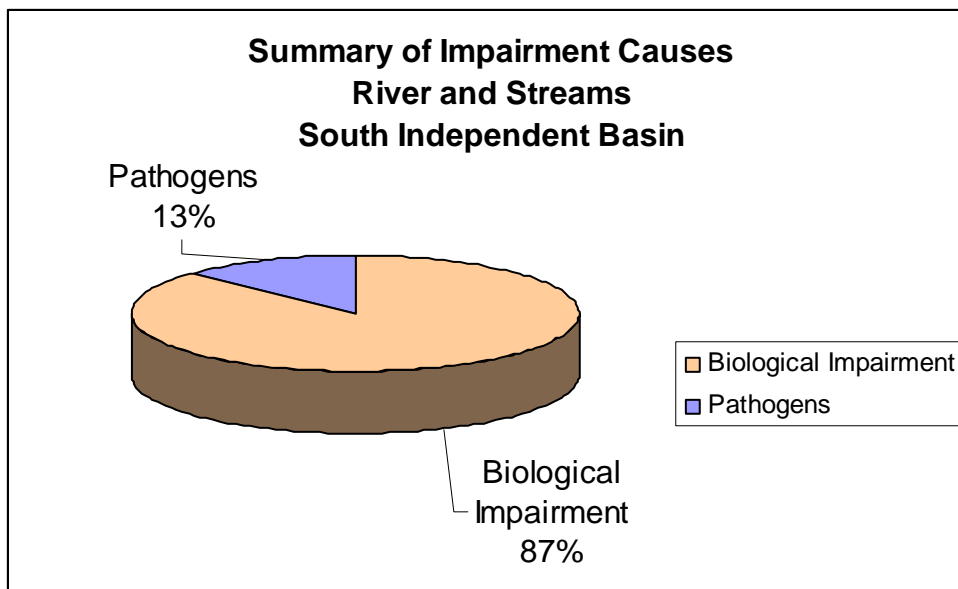


Figure 65: Summary of Impairment Causes for Perennial Rivers and Streams-South Independent Streams Basin

Aquatic Life Use Support

As stated earlier, all of the Aquatic Life Use Support assessments were based on biological monitoring data collected as part of the development of Mississippi’s IBI process, M-BISQ. Of the South Independent Streams Basin’s assessed stream and river miles, approximately 251 miles of perennial rivers and streams are attaining their aquatic life use, while 530 miles were assessed as not attaining and are considered impaired (Table 28 and Figure 66). All of the non-attainment assessments are contributed to biological impairment and stressor identification studies are pending to determine the actual pollutant(s) contributing to the impairment. Figure 67 depicts a geo-referenced coverage of the Aquatic Life Use Support assessments for the South Independent Streams Basin.

Table 28: Aquatic Life Use Support-South Independent Streams Basin

Status	Miles
Attaining	251
Unknown	4,566
Total Not Attaining	530
TMDL needed	0
TMDL not needed	530
Total	5,347

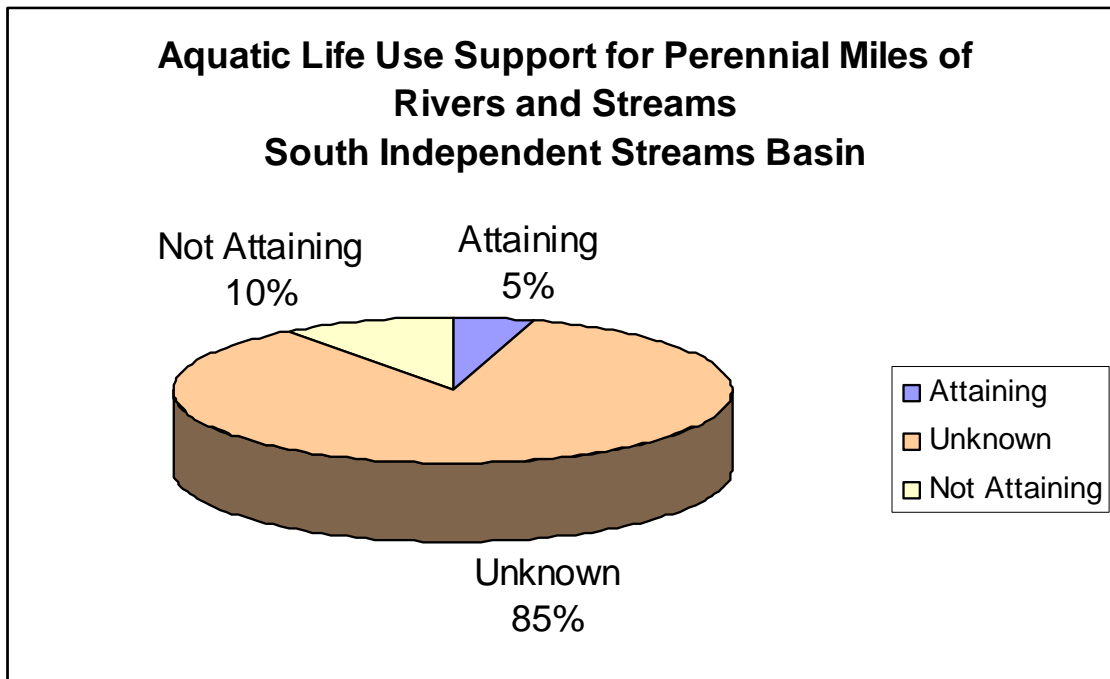


Figure 66: Aquatic Life Use Support-South Independent Streams Basin

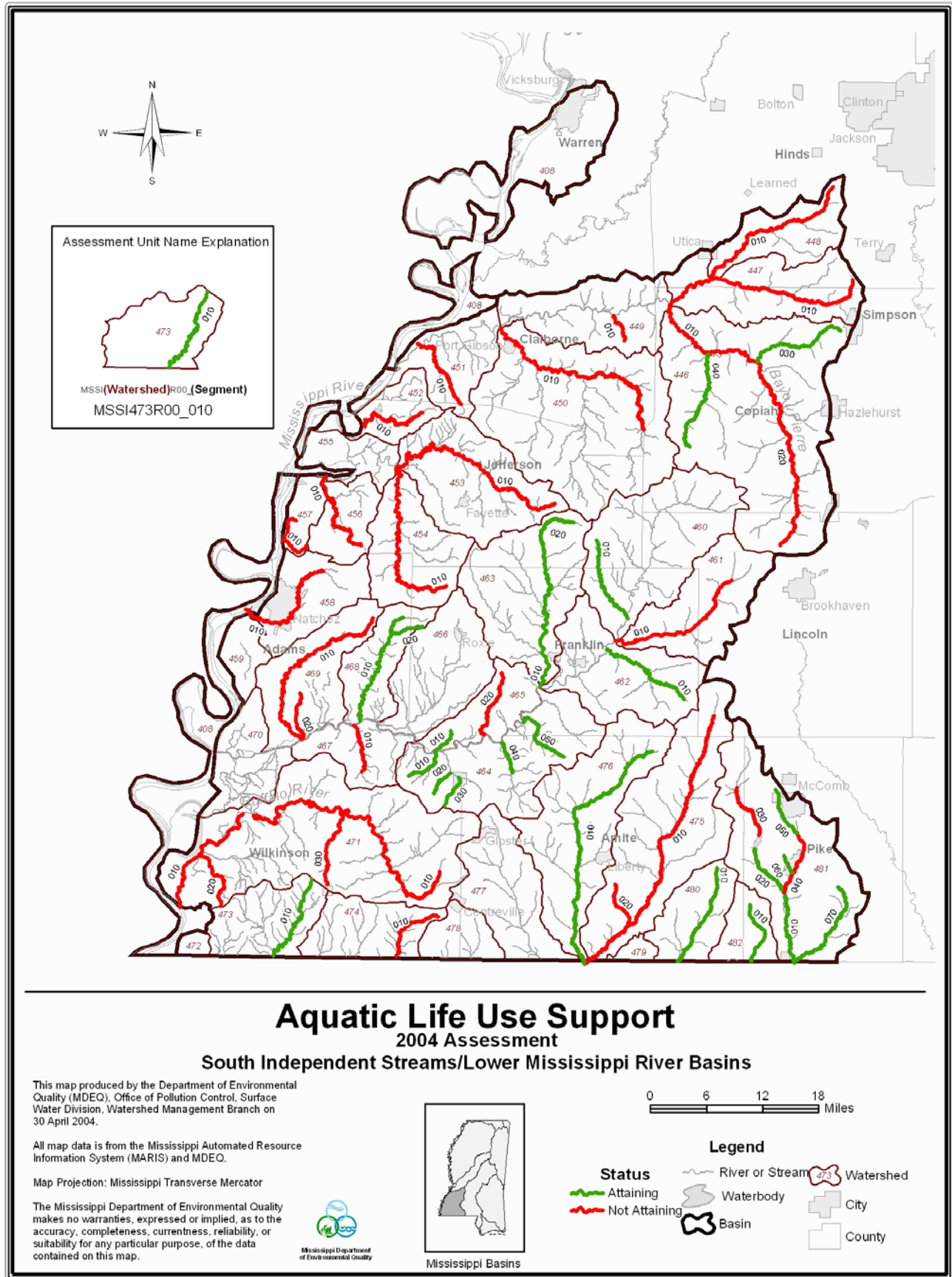


Figure 67: Aquatic Life Use Support Map-South Independent Streams Basin

Recreation Use Support

Data collected as part a statewide §303(d) fecal coliform monitoring project were used to make the Recreation Use Support assessments. Of the South Independent Streams Basin's assessed stream and river miles, approximately 216 miles of perennial rivers and streams are attaining their recreation use, while 78 miles were assessed as not attaining and are considered impaired (Table 29 and Figure 68). Figure 69 depicts a geo-referenced coverage of the Recreation Use Support assessments for the South Independent Streams Basin.

Table 29: Recreation Use Support-South Independent Streams Basin

Status	Miles
Attaining	216
Unknown	5,053
Total Not Attaining	78
TMDL needed	71
TMDL not needed	7
Total	5,347

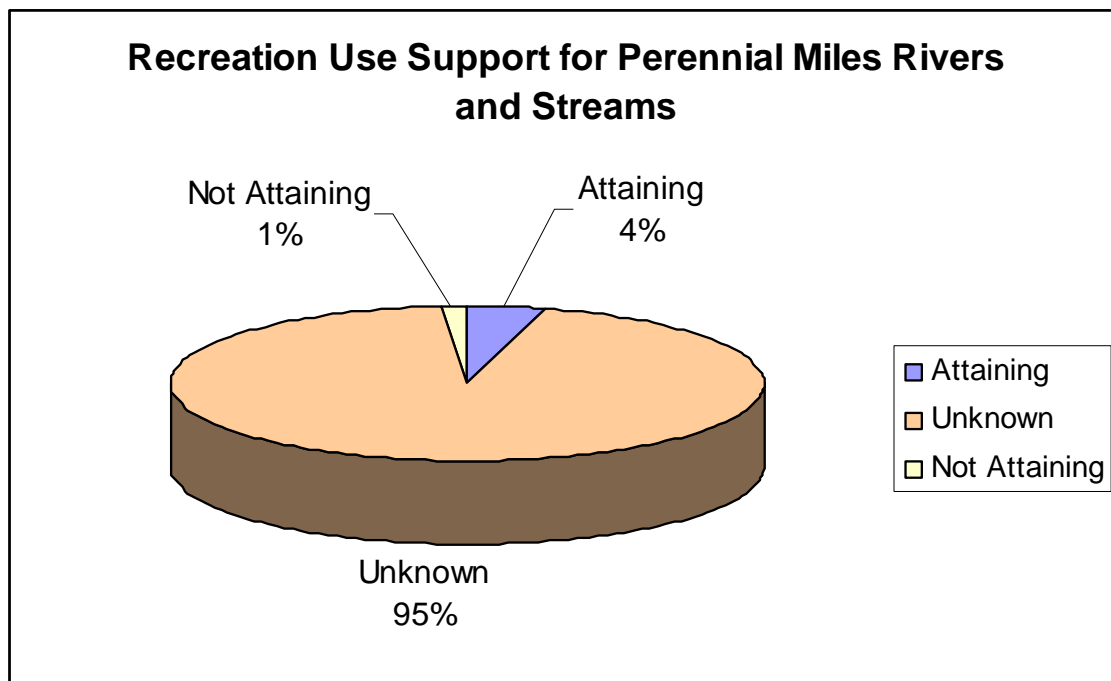


Figure 68: Recreation Use Support-South Independent Streams Basin

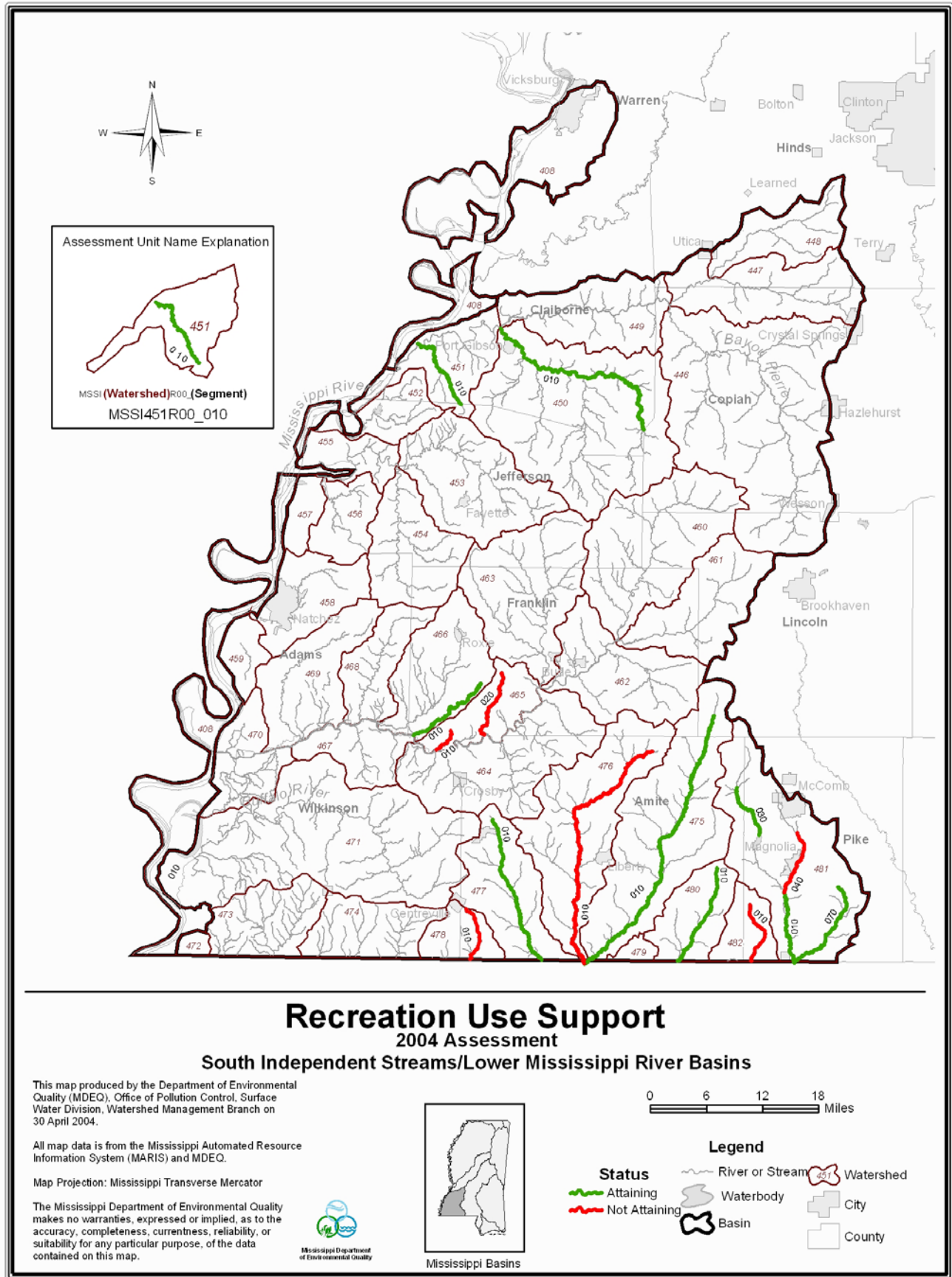


Figure 69: Recreation Use Support Map-South Independent Streams Basin

Table 30: 2004 §305(b) Assessed Water Bodies-South Independent Streams Basin

SOUTH INDEPENDENT STREAMS					
WATER BODY NAME	ASSESSMENT UNIT	§ 303(d)	COUNTY	USE	ASSESSMENT STATUS
ANNAS BOTTOM	MSSI457R00_010	MS457E	Adams	Aquatic Life Support	Not Attaining, Biological Impairment
LOCATION: NEAR PINE RIDGE INTERMITTENT PART OF MISSISSIPPI RIVER FLOOD PLAIN					
BALA CHITTO CREEK	MSSI481R00_070	N/A	Pike	Aquatic Life Support	Attaining
LOCATION: AT OSYKA FROM HEADWATERS TO MOUTH AT TANGIPAHOA RIVER AT LA STATE LINE					
BATES CREEK	MSSI468R00_020	N/A	Adams, Franklin	Aquatic Life Support	Attaining
LOCATION: FROM HEADWATERS TO MOUTH AT SANDY CREEK					
BAYOU PIERRE	MSSI446R00_010	MS446BE	Copiah	Aquatic Life Support	Not Attaining, Biological Impairment
LOCATION: FROM CONFLUENCE WITH TURKEY CREEK TO CONFLUENCE WITH WHITE OAK CREEK					
BAYOU PIERRE	MSSI446R00_020	MS446BE	Copiah, Lincoln	Aquatic Life Support	Not Attaining, Biological Impairment
LOCATION: FROM HEADWATERS TO CONFLUENCE WITH TURKEY CREEK					
BAYOU SARA	MSSI473R00_010	N/A	Wilkinson	Aquatic Life Support	Attaining
LOCATION: FROM HEADWATERS TO LA STATE LINE					
BEAVER CREEK	MSSI477R00_010	MS477E	Amite	Secondary Contact	Attaining
LOCATION: FROM HEADWATERS TO LA STATE LINE					
BRUSHY CREEK	MSSI464R00_040	N/A	Amite	Aquatic Life Support	Attaining
LOCATION: FROM HEADWATERS TO MOUTH AT HOMOCHITTO RIVER					

SOUTH INDEPENDENT STREAMS					
WATER BODY NAME	ASSESSMENT UNIT	§ 303(d)	COUNTY	USE	ASSESSMENT STATUS
BUFFALO RIVER	MSSI471R00_010	MS471BE	Wilkinson	Aquatic Life Support	Not Attaining, Biological Impairment
LOCATION: NEAR WILKINSON FROM HEADWATERS TO MOUTH AT MISSISSIPPI RIVER					
CARS CREEK	MSSI475R00_020	MS475CM	Amite	Aquatic Life Support	Not Attaining, Biological Impairment
LOCATION: NEAR LIBERTY FROM HEADWATERS TO MOUTH AT EAST FORK AMITE RIVER					
CASTON CREEK	MSSI464R00_050	N/A	Amite, Franklin	Aquatic Life Support	Attaining
LOCATION: FROM HEADWATERS TO MOUTH AT HOMOCHITTO RIVER					
COMITE CREEK	MSSI478R00_010	MS478E	Amite	Secondary Contact	Not Attaining
LOCATION: NEAR CENTREVILLE FROM HEADWATERS LA STATE LINE					
CROOKED CREEK	MSSI467R00_010	MS467E	Adams, Wilkinson	Aquatic Life Support	Not Attaining, Biological Impairment
LOCATION: NEAR DARRINGTON FROM HEADWATERS TO MOUTH AT HOMOCHITTO RIVER					
CYPRESS CREEK	MSSI464R00_030	N/A	Wilkinson	Aquatic Life Support	Attaining
LOCATION: FROM HEADWATERS TO MOUTH AT FOSTER CREEK					
DOWD CREEK	MSSI452R00_010	MS452E	Jefferson	Aquatic Life Support	Not Attaining, Biological Impairment
LOCATION: NEAR LORMAN FROM HEADWATERS TO MOUTH AT MISSISSIPPI RIVER					
DRY CREEK	MSSI464R00_010	N/A	Franklin, Wilkinson	Aquatic Life Support	Attaining
LOCATION: FROM HEADWATERS TO MOUTH AT HOMOCHITTO RIVER					

SOUTH INDEPENDENT STREAMS					
WATER BODY NAME	ASSESSMENT UNIT	§ 303(d)	COUNTY	USE	ASSESSMENT STATUS
DRY CREEK	MSSI466R00_010	N/A	Franklin, Wilkinson	Secondary Contact	Attaining
LOCATION: NEAR GARDEN CITY FROM HEADWATERS TO MOUTH AT HOMOCHITTO RIVER					
EAST FORK AMITE RIVER	MSSI475R00_010	MS475E	Amite, Lincoln	Aquatic Life Support	Not Attaining, Biological Impairment
LOCATION: NEAR PEORIA FROM HEADWATERS TO LA STATE LINE					
FAIRCHILDS CREEK	MSSI456R00_010	MS456E	Adams, Jefferson	Aquatic Life Support	Not Attaining, Biological Impairment
LOCATION: NEAR CHURCH HILL FROM HEADWATERS TO MOUTH AT COLES CREEK					
FIFTEEN MILE CREEK	MSSI460R00_010	N/A	Franklin, Jefferson	Aquatic Life Support	Attaining
LOCATION: FROM HEADWATERS TO MOUTH AT HOMOCHITTO RIVER					
FORDS CREEK	MSSI471R00_030	MS471FE	Wilkinson	Aquatic Life Support	Not Attaining, Biological Impairment
LOCATION: NEAR WOODVILLE FROM HEADWATERS TO MOUTH AT BUFFALO RIVER					
FOSTER CREEK	MSSI446R00_040	N/A	Copiah	Aquatic Life Support	Attaining
LOCATION: FROM HEADWATERS TO MOUTH AT BAYOU PIERRE					
JAMES CREEK	MSSI451R00_010	MS451JE	Claiborne, Jefferson	Aquatic Life Support	Not Attaining, Biological Impairment
LOCATION: NEAR LORMAN FROM HEADWATERS TO MOUTH AT BAYOU PIERRE					
LITTLE BAYOU PIERRE	MSSI450R00_010	MS450E	Claiborne	Aquatic Life Support	Not Attaining, Biological Impairment
LOCATION: NEAR PORT GIBSON FROM HEADWATERS TO MOUTH AT BAYOU PIERRE					

SOUTH INDEPENDENT STREAMS					
WATER BODY NAME	ASSESSMENT UNIT	§ 303(d)	COUNTY	USE	ASSESSMENT STATUS
LITTLE TANGIPAHOA RIVER	MSSI481R00_040	MS481M5	Pike	Aquatic Life Support Secondary Contact	Not Attaining, Biological Impairment Not Attaining, TMDL Completed
LOCATION: NEAR FERNWOOD FROM CONFLUENCE WITH TOWN CREEK TO MOUTH AT TANGIPAHOA RIVER					
LITTLE TANGIPAHOA RIVER	MSSI481R00_050	N/A	Pike	Aquatic Life Support	Attaining
LOCATION: FROM HEADWATERS TO CONFLUENCE WITH TOWN CREEK					
MCCALL CREEK	MSSI461R00_010	MS461E	Franklin, Lincoln	Aquatic Life Support	Not Attaining, Biological Impairment
LOCATION: NEAR VAUGHN FROM HEADWATERS TO MOUTH AT HOMOCHITTO RIVER					
MCGEEHEE CREEK	MSSI462R00_010	N/A	Franklin	Aquatic Life Support	Attaining
LOCATION: FROM HEADWATERS TO MOUTH AT HOMOCHITTO RIVER					
MIDDLE FORK CREEK	MSSI463R00_010	N/A	Franklin	Aquatic Life Support	Attaining
LOCATION: FROM CONFLUENCE WITH CAMERON CREEK TO MOUTH AT HOMOCHITTO RIVER					
MIDDLE FORK CREEK	MSSI463R00_020	N/A	Franklin, Jefferson	Aquatic Life Support	Attaining
LOCATION: FROM HEADWATERS TO CONFLUENCE WITH CAMERON CREEK					
MILLBROOK CREEK	MSSI471R00_020	MS471MM	Wilkinson	Aquatic Life Support	Not Attaining, Biological Impairment
LOCATION: NEAR POND FROM HEADWATERS TO MOUTH AT BUFFALO RIVER					
MINNEHAHA CREEK	MSSI481R00_060	N/A	Pike	Aquatic Life Support	Attaining
LOCATION: FROM HEADWATERS TO MOUTH AT LITTLE TANGIPAHOA RIVER					

SOUTH INDEPENDENT STREAMS					
WATER BODY NAME	ASSESSMENT UNIT	§ 303(d)	COUNTY	USE	ASSESSMENT STATUS
NORTH FORK COLES CREEK	MSSI453R00_010	MS453E	Jefferson	Aquatic Life Support	Not Attaining, Biological Impairment
LOCATION: NEAR CHURCH HILL FROM HEADWATERS TO CONFLUENCE WITH SOUTH FORK COLES CREEK					
RICHARDSON CREEK	MSSI465R00_020	MS465RE	Franklin	Aquatic Life Support	Not Attaining, Biological Impairment
LOCATION: FROM HEADWATERS TO MOUTH AT HOMOCHITTO RIVER				Secondary Contact	Not Attaining, TMDL Completed
SANDY CREEK	MSSI468R00_010	N/A	Adams	Aquatic Life Support	Attaining
LOCATION: NEAR KINGSTON FROM HEADWATERS TO MOUTH AT HOMOCHITTO RIVER					
SECOND CREEK	MSSI469R00_010	MS469SE	Adams, Wilkinson	Aquatic Life Support	Not Attaining, Biological Impairment
LOCATION: NEAR DOLOROSO FROM HEADWATERS TO MOUTH AT HOMOCHITTO RIVER					
SOUTH FORK COLES CREEK	MSSI454R00_010	MS454E	Adams, Franklin, Jefferson	Aquatic Life Support	Not Attaining, Biological Impairment
LOCATION: NEAR HAMBURG FROM HEADWATERS TO MOUTH AT COLES CREEK					
ST. CATHERINES CREEK	MSSI458R00_010	MS458SCCM	Adams	Aquatic Life Support	Not Attaining, Biological Impairment
LOCATION: AT NATCHEZ FROM HEADWATERS TO MOUTH AT MS RIVER					
STORM CREEK	MSSI449R00_010	MS449SM	Claiborne	Aquatic Life Support	Not Attaining, Biological Impairment
LOCATION: NEAR CARLISLE FROM HEADWATERS TO MOUTH AT BAYOU PIERRE					
TALLAHALA CREEK	MSSI448R00_010	MS448E	Hinds	Aquatic Life Support	Not Attaining, Biological Impairment
LOCATION: NEAR ADAMS FROM HEADWATERS TO MOUTH AT WHITE OAK CREEK					

SOUTH INDEPENDENT STREAMS					
WATER BODY NAME	ASSESSMENT UNIT	§ 303(d)	COUNTY	USE	ASSESSMENT STATUS
TANGIPAHOA RIVER	MSSI481R00_010	N/A	Pike	Aquatic Life Support Secondary Contact	Attaining Attaining
LOCATION: FROM CONFLUENCE WITH LITTLE TANGIPAHOA RIVER TO LA STATE LINE					
TANGIPAHOA RIVER	MSSI481R00_020	N/A	Pike	Aquatic Life Support	Attaining
LOCATION: FROM LAKE TANGIPAHOA DAM TO CONFLUENCE WITH LITTLE TANGIPAHOA RIVER					
TANGIPAHOA RIVER	MSSI481R00_030	MS481M2	Amite, Pike	Aquatic Life Support Secondary Contact	Not Attaining, Biological Impairment Attaining
LOCATION: NEAR MCCOMB FROM CONFLUENCE WITH DEVINE CREEK TO LAKE TANGIPAHOA					
TAR CREEK	MSSI464R00_020	N/A	Wilkinson	Aquatic Life Support	Attaining
LOCATION: FROM HEADWATERS TO MOUTH AT FOSTER CREEK					
TERRYS CREEK	MSSI482R00_010	MS482M	Pike	Aquatic Life Support Secondary Contact	Attaining Not Attaining, TMDL Completed
LOCATION: FROM HEADWATERS TO LA STATE LINE					
THOMPSON CREEK	MSSI474R00_010	MS474E	Wilkinson	Aquatic Life Support	Not Attaining, Biological Impairment
LOCATION: NEAR CENTREVILLE FROM HEADWATERS TO LA STATE LINE					
TICFAW RIVER	MSSI480R00_010	MS480E	Amite	Aquatic Life Support Secondary Contact	Attaining Attaining
LOCATION: NEAR MIXON FROM HEADWATERS TO LA STATE LINE					
TURKEY CREEK	MSSI446R00_030	N/A	Copiah	Aquatic Life Support	Attaining
LOCATION: FROM HEADWATERS TO MOUTH AT BAYOU PIERRE					

SOUTH INDEPENDENT STREAMS					
WATER BODY NAME	ASSESSMENT UNIT	§ 303(d)	COUNTY	USE	ASSESSMENT STATUS
WEST FORK AMITE RIVER	MSSI476R00_010	N/A	Amite	Aquatic Life Support Primary Contact (Recr)	Attaining Not Attaining, TMDL Completed
LOCATION: NEAR LIBERTY FROM HEADWATERS TO LA STATE LINE					
WHITE OAK CREEK	MSSI447R00_010	MS447E	Copiah, Hinds	Aquatic Life Support	Not Attaining, Biological Impairment
LOCATION: NEAR CRYSTAL SPRINGS FROM HEADWATERS TO MOUTH AT BAYOU PIERRE					
WHITES CREEK	MSSI469R00_020	MS469WE	Adams, Wilkinson	Aquatic Life Support	Not Attaining, Biological Impairment
LOCATION: NEAR DOLOROSO FROM HEADWATERS TO MOUTH AT HOMOCHITTO RIVER					
ZEIGLER CREEK	MSSI465R00_010	MS465ZE	Franklin, Wilkinson	Aquatic Life Support Secondary Contact	Attaining Not Attaining, TMDL Completed
LOCATION: FROM HEADWATERS TO MOUTH AT HOMOCHITTO RIVER					