



State of Mississippi  
Water Quality Assessment  
2004 Section 305(b) Report  
Addendum



# State of Mississippi Water Quality Assessment 2004 Section 305(b) Report Addendum



Mississippi Department of  
Environmental Quality

May 2004

Prepared by:  
Natalie B. Guedon and Jeff V. Thomas  
Watershed Management Branch  
Post Office Box 10385  
Jackson, MS 39289-0385  
(601) 961-5171  
[www.deq.state.ms.us](http://www.deq.state.ms.us)

## Table of Contents

<b>BASIN ASSESSMENTS .....</b>	<b>1</b>
Introduction .....	1
<b>BIG BLACK RIVER BASIN.....</b>	<b>3</b>
Basin Description .....	3
Land Use .....	4
Water Resources.....	5
Surface Water Assessment.....	6
<b>COASTAL STREAMS BASIN .....</b>	<b>21</b>
Basin Description .....	21
Land Use .....	22
Water Resources.....	23
Surface Water Assessment.....	24
<b>NORTH INDEPENDENT STREAMS BASIN.....</b>	<b>39</b>
Basin Description .....	39
Land Use .....	40
Water Resources.....	41
Surface Water Assessment.....	41
<b>PASCAGOULA RIVER BASIN .....</b>	<b>53</b>
Basin Description .....	53
Land Use .....	54
Water Resources.....	55
Surface Water Assessment.....	57
<b>PEARL RIVER BASIN.....</b>	<b>91</b>
Basin Description .....	91
Land Use .....	92
Water Resources.....	93
Surface Water Assessment.....	95
<b>SOUTH INDEPENDENT STREAMS BASIN.....</b>	<b>119</b>
Basin Description .....	119
Land Use .....	120
Water Resources.....	121
Surface Water Assessment.....	121
<b>TENNESSEE RIVER BASIN.....</b>	<b>137</b>
Basin Description .....	137
Land Use .....	138
Water Resources.....	139
Surface Water Assessment.....	140
<b>TOMBIGBEE RIVER BASIN .....</b>	<b>151</b>
Basin Description .....	151
Land Use .....	152
Water Resources.....	153
Surface Water Assessment.....	154
<b>YAZOO RIVER BASIN .....</b>	<b>177</b>
Basin Description .....	177
Land Use .....	179
Water Resources.....	181
Surface Water Assessment.....	182

## Table of Tables

Table 1: Summary of Big Black River Basin Use Support Assessments – Rivers and Streams .....	8
Table 2: Summary of Impairment Causes-Big Black River Basin .....	10
Table 3: Aquatic Life Use Support-Big Black River Basin .....	11
Table 4: Recreation Use Support-Big Black River Basin .....	13
Table 5: 2004 §305(b) Assessed Water Bodies-Big Black River Basin .....	15
Table 6: Summary of Coastal Streams Basin Use Support Assessments-River and Stream Miles .....	27
Table 7: Summary of Impairment Causes-Coastal Streams Basin .....	28
Table 8: Aquatic Life Use Support-Coastal Streams Basin .....	29
Table 9: Recreation Use Support-Coastal Streams Basin .....	31
Table 10: 2004 §305(b) Assessed Water Bodies-Coastal Streams Basin .....	34
Table 11: Summary of North Independent Streams Basin Use Support Assessments-Rivers and Streams	43
Table 12: Summary of Impairment Causes-North Independent Streams Basin .....	45
Table 13: Aquatic Life Use Support-North Independent Streams Basin .....	46
Table 14: Recreation Use Support-North Independent Streams Basin .....	48
Table 15: 2004 §305(b) Assessed Water Bodies-North Independent Streams Basin .....	51
Table 16: Summary of Pascagoula River Basin Use Support Assessments-Rivers and Streams .....	59
Table 17: Summary of Impairment Causes-Pascagoula River Basin .....	61
Table 18: Aquatic Life Use Support-Pascagoula River Basin .....	62
Table 19: Recreation Use Support-Pascagoula River Basin .....	67
Table 20: 2004 §305(b) Assessed Water Bodies-Pascagoula River Basin .....	73
Table 21: Summary of Pearl River Basin Use Support Assessments-Rivers and Streams .....	97
Table 22: Summary of Impairment Causes-Pearl River Basin .....	99
Table 23: Aquatic Life Use Support-Pearl River Basin .....	100
Table 24: Recreation Use Support-Pearl River Basin .....	103
Table 25: 2004 §305(b) Assessed Water Bodies-Pearl River Basin .....	107
Table 26: Summary of South Independent Streams Basin Use Support Assessments-Rivers and Streams .....	123
Table 27: Summary of Impairment Causes-South Independent Streams Basin .....	124
Table 28: Aquatic Life Use Support-South Independent Streams Basin .....	125
Table 29: Recreation Use Support-South Independent Streams Basin .....	127
Table 30: 2004 §305(b) Assessed Water Bodies-South Independent Streams Basin .....	129
Table 31: Summary of Tennessee River Basin Use Support Assessments-Rivers and Streams .....	141
Table 32: Summary of Impairment Causes-Tennessee River Basin .....	143
Table 33: Aquatic Life Use Support-Tennessee River Basin .....	144
Table 34: Recreation Use Support-Tennessee River Basin .....	146
Table 35: 2004§305(b) Assessed Water Bodies-Tennessee River Basin .....	149
Table 36: Summary of Tombigbee River Basin Use Support Assessments – Rivers and Streams .....	156
Table 37: Summary of Impairment Causes-Tombigbee River Basin .....	158
Table 38: Aquatic Life Use Support-Tombigbee River Basin .....	159
Table 39: Recreation Use Support-Tombigbee River Basin .....	163
Table 40: 2004 §305(b) Assessed Water Bodies-Tombigbee River Basin .....	167
Table 41: Summary of Yazoo River Basin Use Support Assessments-Rivers and Streams .....	184
Table 42: Summary of Impairment Causes-Yazoo River Basin .....	186
Table 43: Aquatic Life Use Support-Yazoo River Basin .....	187
Table 44: Recreation Use Support-Yazoo River Basin .....	192
Table 45: 2004 §305(b) Assessed Water Bodies-Yazoo River Basin .....	199

## Table of Figures

Figure 1: Mississippi’s Ten Major Drainage Basins.....	2
Figure 2: Big Black River Basin (MDEQ).....	3
Figure 3: Distribution of Land Cover-Big Black River Basin (MARIS).....	4
Figure 4: Grouping of Land Cover in the Big Black River Basin (MARIS) .....	4
Figure 5: Big Black River Basin Monitoring Stations and M-BISQ Bioregions.....	6
Figure 6: Big Black River Basin Assessment of Perennial River and Stream Miles.....	8
Figure 7: Summary of Impairment Causes for Perennial Rivers and Streams-Big Black River Basin .....	10
Figure 8: Aquatic Life Use Support-Big Black River Basin.....	11
Figure 9: Aquatic Life Use Support Map-Big Black River Basin .....	12
Figure 10: Recreation Use Support-Big Black River Basin.....	13
Figure 11: Recreation Use Support Map-Big Black River Basin .....	14
Figure 12: Coastal Streams Basin (MDEQ).....	21
Figure 13: Major Land Cover in the Coastal Streams Basin (MARIS) .....	22
Figure 14: Distribution of Land Cover in the Coastal Streams Basin (MARIS) .....	22
Figure 15: Coastal Streams Basin Monitoring Stations and M-BISQ Bioregions.....	24
Figure 16: Coastal Streams Basin Assessment of Perennial Rivers and Streams.....	27
Figure 17: Summary of Impairment Causes for Perennial Rivers and Streams-Coastal Streams Basin .....	28
Figure 18: Aquatic Life Use Support-Coastal Streams Basin.....	29
Figure 19: Aquatic Life Use Support Map-Coastal Streams Basin .....	30
Figure 20: Recreation Use Support-Coastal Streams Basin.....	31
Figure 21: Recreation Use Support Map-Coastal Streams Basin .....	32
Figure 22: North Independent Streams Basin (MDEQ).....	39
Figure 23: Major Land Cover in the North Independent Streams Basin (MARIS) .....	40
Figure 24: Distribution of Land Cover in the North Independent Streams Basin (MARIS) .....	40
Figure 25: North Independent Streams Basin Monitoring Stations and M-BISQ Bioregions.....	41
Figure 26: North Independent Streams Basin Assessment of Perennial Rivers and Streams.....	43
Figure 27: Summary of Impairment Causes for Perennial Rivers and Streams-North Independent Streams Basin.....	45
Figure 28: Aquatic Life Use Support-North Independent Streams Basin.....	46
Figure 29: Aquatic Life Use Support Map-North Independent Streams Basin .....	47
Figure 30: Recreation Use Support-North Independent Streams Basin.....	48
Figure 31: Recreation Use Support Map-North Independent Streams Basin .....	49
Figure 32: Pascagoula River Basin (MDEQ).....	53
Figure 33: Major Land Cover in the Pascagoula River Basin (MARIS) .....	54
Figure 34: Distribution of Land Cover in the Pascagoula River Basin (MARIS) .....	55
Figure 35: Pascagoula River Basin Monitoring Stations .....	57
Figure 36: Pascagoula River Basin Assessment of Perennial Rivers and Streams.....	59
Figure 37: Summary of Impairment Causes for Perennial Rivers and Streams-Pascagoula River Basin ..	61
Figure 38: Aquatic Life Use Support-Pascagoula River Basin.....	62
Figure 39: Aquatic Life Use Support Map-Upper Pascagoula River Basin .....	63
Figure 40: Aquatic Life Use Support Map-Middle Pascagoula River Basin.....	64
Figure 41: Aquatic Life Use Support Map-Lower Pascagoula River Basin.....	65
Figure 42: Aquatic Life Use Support Map-Lower Pascagoula River Basin.....	66
Figure 43: Recreation Use Support- Pascagoula River Basin.....	67
Figure 44: Recreation Use Support Map-Upper Pascagoula River Basin .....	68
Figure 45: Recreation Use Support Map-Middle Pascagoula River Basin.....	69
Figure 46: Recreation Use Support Map-Lower Pascagoula River Basin .....	70
Figure 47: Recreation Use Support Map-Lower Pascagoula River Basin .....	71

Mississippi 2004 §305(b) Water Quality Assessment Report Addendum

Figure 48: Pearl River Basin (MDEQ) ..... 91

Figure 49: Major Land Cover-Pearl River Basin ..... 92

Figure 50: Distribution of Land Cover in the Pearl River Basin (MARIS) ..... 93

Figure 51: Pearl River Basin Monitoring Stations ..... 95

Figure 52: Pearl River Basin Assessment of Perennial Rivers and Streams ..... 97

Figure 53: Pearl River Basin Summary of Impairment Causes for Perennial Rivers and Streams ..... 99

Figure 54: Aquatic Life Use Support-Pearl River Basin ..... 100

Figure 55: Aquatic Life Use Support Map-Upper Pearl River Basin ..... 101

Figure 56: Aquatic Life Use Support Map-Lower Pearl River Basin ..... 102

Figure 57: Recreation Use Support- Pearl River Basin ..... 103

Figure 58: Recreation Use Support Map-Upper Pearl River Basin ..... 104

Figure 59: Recreation Use Support Map-Lower Pearl River Basin ..... 105

Figure 60: South Independent Streams Basin (MDEQ)..... 119

Figure 61: Major Land Cover in the South Independent Streams Basin (MARIS) ..... 120

Figure 62: Distribution of Land Cover in the South Independent Streams Basin (MARIS) ..... 120

Figure 63: South Independent Streams Basin Monitoring Stations and M-BISQ Bioregions ..... 121

Figure 64: South Independent Streams Basin Assessment of Perennial Rivers and Streams ..... 123

Figure 65: Summary of Impairment Causes for Perennial Rivers and Streams-South Independent Streams Basin ..... 124

Figure 66: Aquatic Life Use Support-South Independent Streams Basin ..... 125

Figure 67: Aquatic Life Use Support Map-South Independent Streams Basin ..... 126

Figure 68: Recreation Use Support-South Independent Streams Basin ..... 127

Figure 69: Recreation Use Support Map-South Independent Streams Basin ..... 128

Figure 70: Tennessee River Basin (MDEQ) ..... 137

Figure 71: Major Land Use in the Tennessee River Basin (MARIS) ..... 138

Figure 72: Distribution of Land Cover in the Tennessee River Basin (MARIS) ..... 138

Figure 73: Tennessee River Basin Monitoring Stations and M-BISQ Bioregions ..... 140

Figure 74: Tennessee River Basin Assessment of Perennial Rivers and Streams ..... 142

Figure 75: Summary of Impairment Causes for Perennial Rivers and Streams-Tennessee River Basin.. 143

Figure 76: Aquatic Life Use Support-Tennessee River Basin ..... 144

Figure 77: Aquatic Life Use Support Map-Tennessee River Basin ..... 145

Figure 78: Recreation Use Support-Tennessee River Basin ..... 146

Figure 79: Recreation Use Support Map-Tennessee River Basin ..... 147

Figure 80: Tombigbee River Basin (MDEQ) ..... 151

Figure 81: Major Land Cover in the Tombigbee River Basin (MARIS) ..... 152

Figure 82: Distribution of Land Cover in the Tombigbee River Basin (MARIS) ..... 152

Figure 83: Tombigbee River Basin Monitoring Stations ..... 154

Figure 84: Tombigbee River Basin Assessment of Perennial Rivers and Streams ..... 156

Figure 85: Summary of Impairment Causes for Perennial Rivers and Streams-Tombigbee River Basin 158

Figure 86: Aquatic Life Use Support-Tombigbee River Basin ..... 159

Figure 87: Aquatic Life Use Support Map-Upper Tombigbee River Basin ..... 160

Figure 88: Aquatic Life Use Support Map-Middle Tombigbee River Basin ..... 161

Figure 89: Aquatic Life Use Support Map-Lower Tombigbee River Basin ..... 162

Figure 90: Recreation Use Support-Tombigbee River Basin ..... 163

Figure 91: Recreation Use Support Map-Upper Tombigbee River Basin ..... 164

Figure 92: Recreation Use Support Map-Middle Tombigbee River Basin ..... 165

Figure 93: Recreation Use Support Map-Lower Tombigbee River Basin ..... 166

Figure 94: Yazoo River Basin (MDEQ) ..... 177

Figure 95: Major Land Use in the Yazoo River Basin (MARIS) ..... 179

Figure 96: Distribution of Land Cover in the Yazoo River Basin (MARIS) ..... 180

Figure 97: Yazoo River Basin Monitoring Stations and M-BISQ Bioregions ..... 182

Mississippi 2004 §305(b) Water Quality Assessment Report Addendum

Figure 98: Yazoo River Basin Assessment of Perennial Rivers and Streams ..... 184  
Figure 99: Summary of Impairment Causes for Perennial Rivers and Streams-Yazoo River Basin..... 186  
Figure 100: Aquatic Life Use Support-Yazoo River Basin ..... 187  
Figure 101: Aquatic Life Use Support Map-Upper Yazoo River Basin ..... 188  
Figure 102: Aquatic Life Use Support Map-Eastern Yazoo River Basin ..... 189  
Figure 103: Aquatic Life Use Support Map-Middle Yazoo River Basin ..... 190  
Figure 104: Aquatic Life Use Support Map-Lower Yazoo River Basin..... 191  
Figure 105: Recreation Use Support-Yazoo River Basin ..... 192  
Figure 106: Recreation Use Support Map-Upper Yazoo River Basin ..... 193  
Figure 107: Recreation Use Support Map-Eastern Yazoo River Basin ..... 194  
Figure 108: Recreation Use Support Map-Middle Yazoo River Basin ..... 195  
Figure 109: Recreation Use Support Map-Lower Yazoo River Basin..... 196  
Figure 110: Advisory area for the Delta Region of Mississippi ..... 197

Mississippi 2004 §305(b) Water Quality Assessment Report Addendum

# **BASIN ASSESSMENTS**

## **Introduction**

MDEQ manages its surface water programs on a river basin scale and has established a process that coordinates the water assessment and management activities of numerous state and federal agencies. This process, the Mississippi Basin Management Approach, is responsible for the development of and recurring updates to, basin management plans for Mississippi's major river basins. This section is an addendum to the *State of Mississippi Water Quality Assessment 2004 §305(b) Report*. This addendum provides water quality assessments and general land use and water resources information specific to each of the state's major river basins. There are no new assessments represented in this addendum that are not part of the 2004 §305b report statewide summary presented in the main document. The information in this section is strictly a representation of the statewide §305(b) assessments broken down by river basin.

Hydraulically, the waters of Mississippi are divided into ten major drainage areas or river basins. These ten basins are the Big Black River Basin, Coastal Streams Basin, Mississippi River Basin, North Independent Streams Basin, Pascagoula River Basin, Pearl River Basin, South Independent Streams Basin, Tennessee River Basin, Tombigbee River Basin and Yazoo River Basin. The boundaries for each basin are shown in Figure 1. For MDEQ management purposes, the Mississippi River Basin has been divided into upper and lower portions. The upper portion has been grouped with the Yazoo River Basin and the lower portion has been grouped with the South Independent Streams Basin.

In the following sections, a discussion of each basin's location, water resources, special water body classifications, and water quality monitoring stations used in the §305(b) assessment process is presented. In addition, a brief description of each basin's physiography, population, and land use/land cover distribution are also given. Surface water quality assessment data are presented and discussed including a summary of the basin's water body assessment status and causes and sources of impairment. Maps, tables and other graphical charts are utilized fluently in depiction of the above information. At the end of each basin section is an alphabetical listing of all individual water body assessments made for the 2004 §305(b) report. With each water body entry, pertinent information regarding water body ID number, county, reach location, assessed use, and assessment status are shown. This table also provides the necessary information to cross-reference §305(b) assessments with the 2004 §303(d) list.

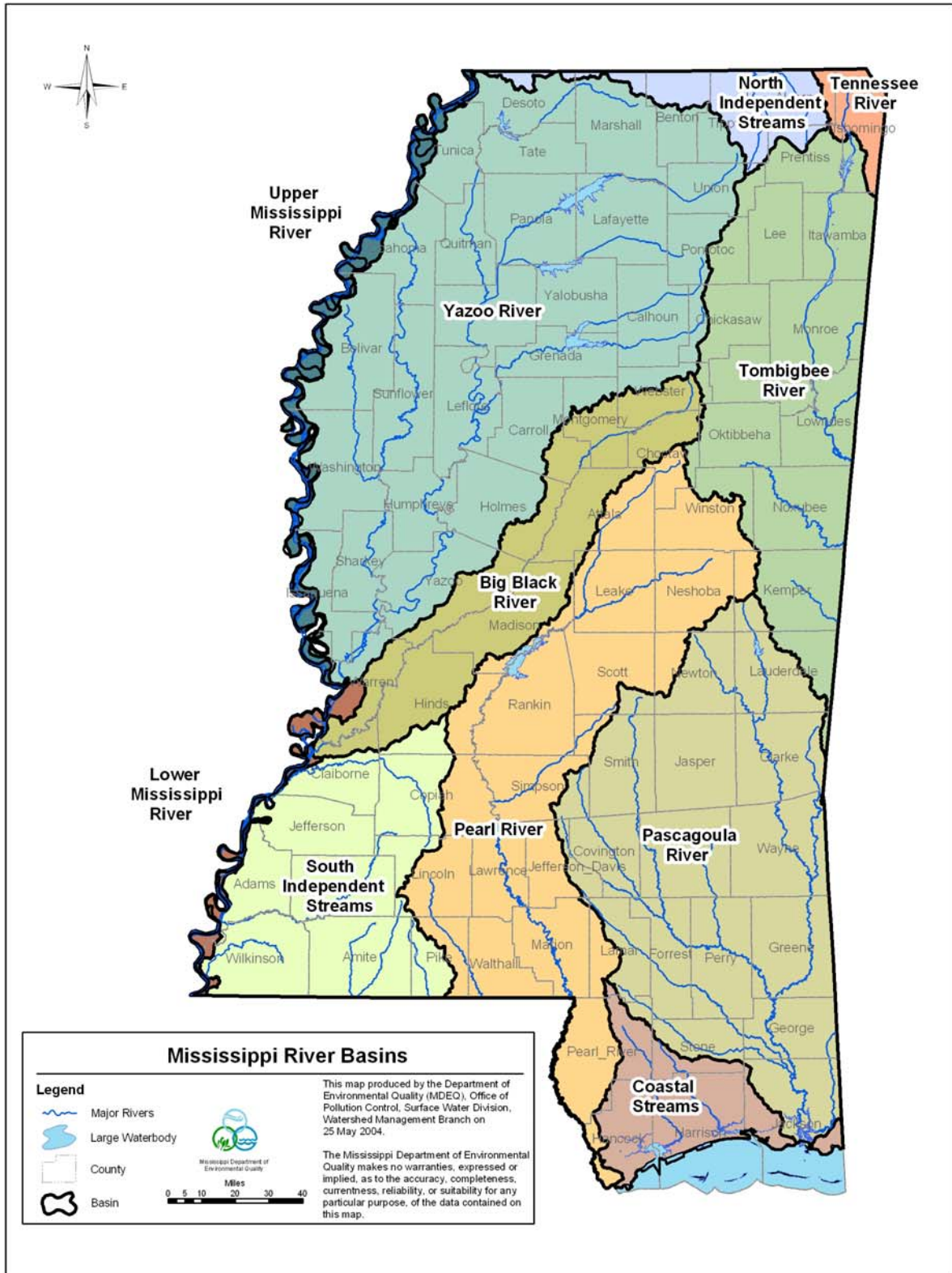


Figure 1: Mississippi's Ten Major Drainage Basins

# PASCAGOULA RIVER BASIN

## Basin Description

The Pascagoula River Basin is the second largest basin in Mississippi at approximately

164 miles long and 84 miles wide and comprises most of southeastern Mississippi with a small part extending into southwestern Alabama. The two main headwater streams in the basin are the Leaf and the Chickasawhay Rivers which eventually confluence to form the Pascagoula River. The Pascagoula River system, comprised of all or part of 22 counties, drains an area of about 9,600 square miles and eventually empties into the Gulf of Mexico. The Pascagoula River System is the last unimpeded major river system in the lower 48 states.



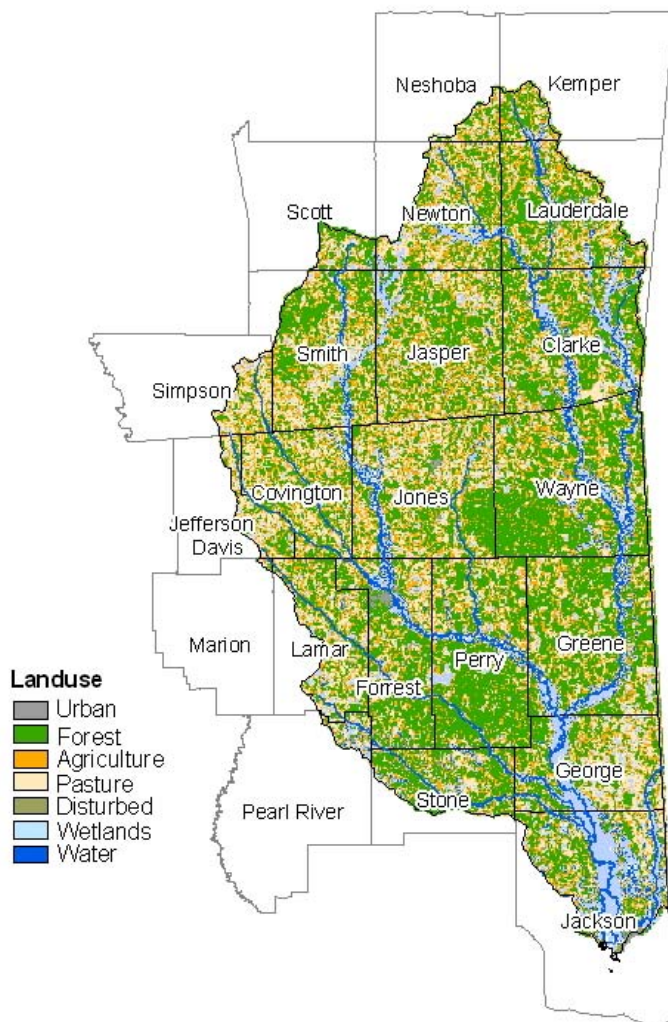
**Figure 32: Pascagoula River Basin (MDEQ)**

Near the Gulf Coast, the topography is low-lying flatlands, forested wetlands, and marshlands. Farther inland, the basin consists primarily of gently rolling hills and broad, flat floodplains. There are also several urban areas in the basin near population centers such as Meridian, Laurel, Hattiesburg, and Pascagoula.

The Pascagoula River Basin, with an estimated population of 716,925, encompasses roughly one-quarter of Mississippi’s population. The Basin is predominantly rural with an average population density of around 75 people per square mile. Greater population densities are found near the urban areas.

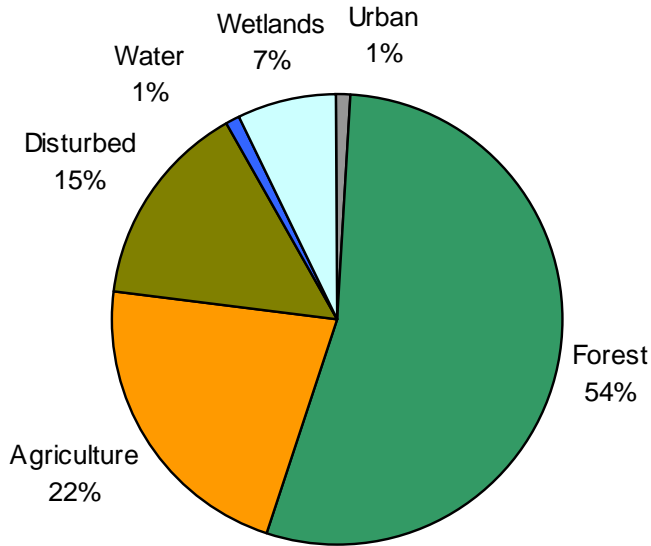
## Land Use

The Pascagoula River Basin is heavily forested throughout the entire river basin. The central portion of the basin is known as the Pine Belt because the basin's forests consist mostly of pine trees with scattered areas of hardwoods. These vast timber resources are the predominant land use but many diverse land uses have staked their claim on this resource rich area of our state. Among these are oil and gas production, agriculture, recreation, and urban development. Major land cover in the basin is shown in Figure 33.



**Figure 33: Major Land Cover in the Pascagoula River Basin (MARIS)**

*Forests* dominate the land cover, with 54% of the basin covered by forest (Figure 34). These forests consist of 64% Non-Industrial privately- owned lands, 22% Forest Industry-owned lands, and 14% Government-owned land. In 1999, approximately 26 percent of Mississippi’s timber production came from the basin contributing about \$324 million to the Mississippi economy. *Agriculture* accounts for about 22 percent of the land use, with two percent of the basin used for cropland and 20 percent for pasture.



*Urban* uses (i.e., towns and cities) make up only 1% of the basin area. However, one of the largest concentrations of industry in the state is in the coastal portion of the basin near the cities of Pascagoula, Moss Point, Escatawpa, and Gautier. *Disturbed areas* (strip mines, gravel pits, sandy areas, barren, and transitional areas) make up 15% of the land use in the basin. *Water* sources, which include streams, lakes, reservoirs and estuaries, and *Wetland*, which includes forested and non-forested wetlands and coastal marsh comprise 8% of the basin.

**Figure 34: Distribution of Land Cover in the Pascagoula River Basin (MARIS)**

## Water Resources

The Pascagoula River Basin has a total of 14,777 miles of perennial and intermittent rivers and streams. According to the state’s WQS, the majority of these water bodies are classified as Fish and Wildlife streams. There are also a significant number of streams that are classified for Recreation and four water bodies that are classified as Public Water Supply. Stream conditions as a whole are usually natural, or unmodified, in appearance with clear water. Some streams in this area of the state are considered as “blackwater streams” because they are stained by tannic acid leached from vegetation. The majority of the streams are deep to moderately deep, fast flowing perennial streams. Near the coast, the lower Pascagoula River system becomes estuarine as the waters enter the Mississippi Sound near the cities of Pascagoula and Gautier.

Numerous reservoirs and lakes can be found in the Pascagoula River Basin. These lakes are significant natural and recreational resources. The Pat Harrison Waterway District manages eight flood control reservoirs that double as water parks and two are also designated as water supply reservoirs. The Mississippi Department of Wildlife,

Fisheries, and Parks manages nine state fishing lakes as well as two state park lakes within the Basin.

An important aspect of the Pascagoula River Basin is the role it plays in maintaining the health and diversity of the Mississippi Sound. The Pascagoula River Basin supplies a large portion of the fresh water entering the Mississippi Sound. In so doing, it replenishes nutrients and sediments that play a critical role in maintaining the productivity of the coastal waters. The sediment it carries maintains an extensive salt marsh habitat that in turn regulates the discharge of nutrients to coastal waters. Because the marshes are important for sustaining the coastal ecosystem, changes in marsh area, plant species, and bio-geological habitats adversely affect the water bodies that they help buffer.

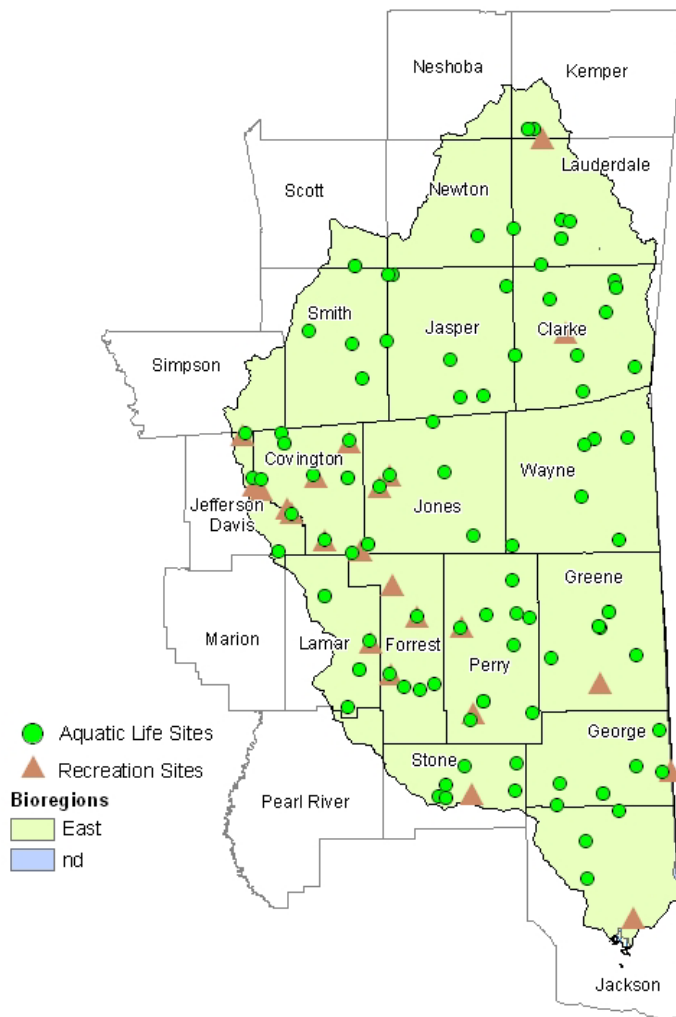
Evolution of coastal wetland habitats through historical and pre-historical times has largely shaped the Mississippi coastal environment into what we see today. In addition to the prolific productivity and filtering capabilities, the physiography that they create is also beneficial. Protective bays and shallows are important habitats for seagrass, oysters, fish and shellfish. These landforms have evolved through time based primarily on the sediments carried by the rivers. Coastal erosion, river meandering or capture, and changes in river transport have markedly affected the geometry and geography of Mississippi's marsh habitats. The total coastal marsh (below the 15ft contour) within Mississippi's Pascagoula River Basin is approximately 21,000 acres, making up roughly 35 percent of the total marsh habitat in Coastal Mississippi.

In terms of biological resources, the Gulf Sturgeon and the Swallow-tailed Kite can be found here as well as many more species. The Pascagoula River Basin has 11 federally threatened and 6 federally endangered species as well as approximately 13 non-native species. In addition, this basin has the state's only designated National Wild and Scenic Stream, Black Creek. The basin also includes numerous water bodies proposed for review as Mississippi Natural and Scenic Waterways System water bodies: Beaverdam Creek, Red Creek, Okatoma Creek, Pascagoula River, Escatawpa River, Chickasawhay River, Okatibbee Creek, Chunky River, Chunky Creek, Tallahala Creek, Leaf River, Bowie River, and Bluff Creek. Because of the abundant wildlife populations, this basin provides great bird watching, hunting and fishing recreational activities as well as a tremendous seafood industry along the coast.

## Surface Water Assessment

### Designated Use Support

The assessments for the Pascagoula River Basin were made based on data from 130 sampling locations in streams and rivers across the basin sampled by MDEQ as part of the §303(d)/IBI wadeable streams project and the §303(d) fecal coliform monitoring project (Figure 35). The perennial streams where the monitoring stations were located



represented the mainstem drainage for each 11-digit watershed in the basin. Additional monitoring data collected in support of fish advisory listings were also utilized in the assessment. Use support status for the basin is presented and summarized with causes and sources of impairment. There are currently three fish advisories on the waters in the Pascagoula River Basin, all for mercury. For more information on these advisories, see Part III Public Health Concerns and Advisories in the 2004 §305(b) report.

**Figure 35: Pascagoula River Basin Monitoring Stations**

MDEQ assessed approximately 25% (1,560 miles) of the total 6,217 perennial miles of streams and rivers in the Pascagoula River Basin. The status of water quality on the remaining 75% (4,657 miles) of the basin's perennial rivers and streams is unknown. The majority of stream miles (58%) in the Pascagoula River Basin is composed of intermittent streams and therefore is not readily assessable.

A summary of use support for the basin's assessed rivers and streams is found in Table 16 and Figure 36. For water bodies with multiple assessed uses, the EPA Assessment Database (ADB) summary under represents the actual amount of attaining mileage assessed. For water bodies with multiple uses assessed, the ADB automatically assigns the water body mileages according to the Integrated Reporting category system. This categorization system assigns a water body to only one of five categories:

**Category 1:** Attaining all uses

**Category 2:** Attaining some uses but insufficient information for assessment of other uses

**Category 3:** Insufficient information to assess any use

**Category 4:** Not attaining a use but a TMDL is not necessary

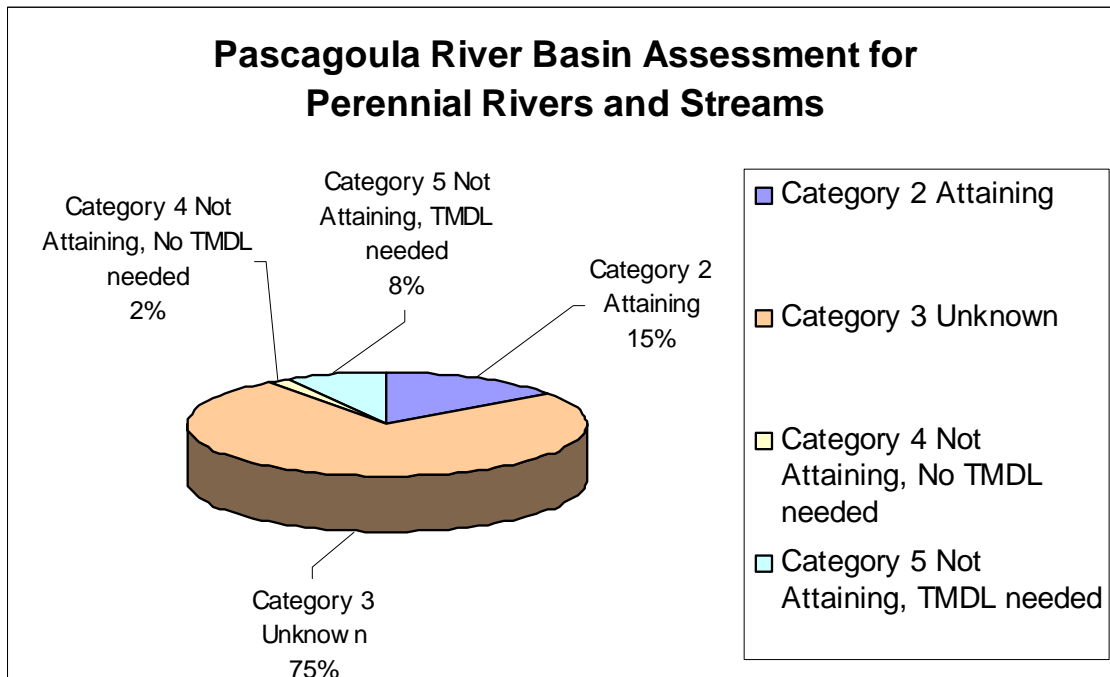
**Category 5:** Not attaining a use and a TMDL is needed

EPA defines a Category 1 water as having sufficient data to prove there is no impairment for any potential designated use of that water body. Due to EPA requirements for Category 1 that all uses are assessed, Mississippi currently has no water bodies assigned to Category 1. If a water body is attaining one use but is not attaining another use, it is assigned to one of the not attaining categories (Category 4 or 5). Therefore, the amounts of waters attaining a designated use are under represented in the following table.

Of the assessed stream and river miles in the Pascagoula River Basin, approximately 15% are in category 2 for attaining some uses but unknown for remaining water body uses, and 2% are in category 4 as not attaining one or more designated uses but a TMDL is not necessary. Waters in category 5 as not attaining and needing a TMDL make up 8% of the assessed water bodies. The status of the remaining 75% of water bodies in the Pascagoula River Basin is unknown and these waters are reflected in category 3. Of the 495 miles of waters in category 5, 78% (385 miles) are assessed as being biologically impaired. Stressor Identification studies will be conducted to determine the actual cause and source of the impairment for these waters. Waters in category 5 can be found listed in Section A (Water Bodies with Monitoring Data) in the Pascagoula River Basin section of the 2004 §303(d) list. Please refer to Table 20 at the end of the Pascagoula River Basin section for a tabular listing of all assessments. This table also provides the necessary information to cross-reference the §305(b) assessments with the §303(d) list.

**Table 16: Summary of Pascagoula River Basin Use Support Assessments-Rivers and Streams**

Degree of Use Support	Total Size in Miles
<b>Category 1: Attaining All Uses</b>	
<b>Category 2: Attaining Some Uses but Unknown for Other Uses</b>	935
<b>Category 3: Unknown/Insufficient Data for Assessment</b>	<b>13,217</b>
<b>Intermittent Miles</b>	8,560
<b>Perennial Miles</b>	4,657
<b>Category 4: Not Attaining – No TMDL Needed</b>	<b>130</b>
A. TMDL Completed	130
B. Impairment Caused by Pollution	0
C. Expected to Attain Use before Next Assessment	0
<b>Category 5: Not Attaining – TMDL Needed</b>	<b>495</b>
A. Pollutant Identified	110
B. Biological Impairment- Cause Unknown	385
<b>Total Miles</b>	<b>14,777</b>



**Figure 36: Pascagoula River Basin Assessment of Perennial Rivers and Streams**

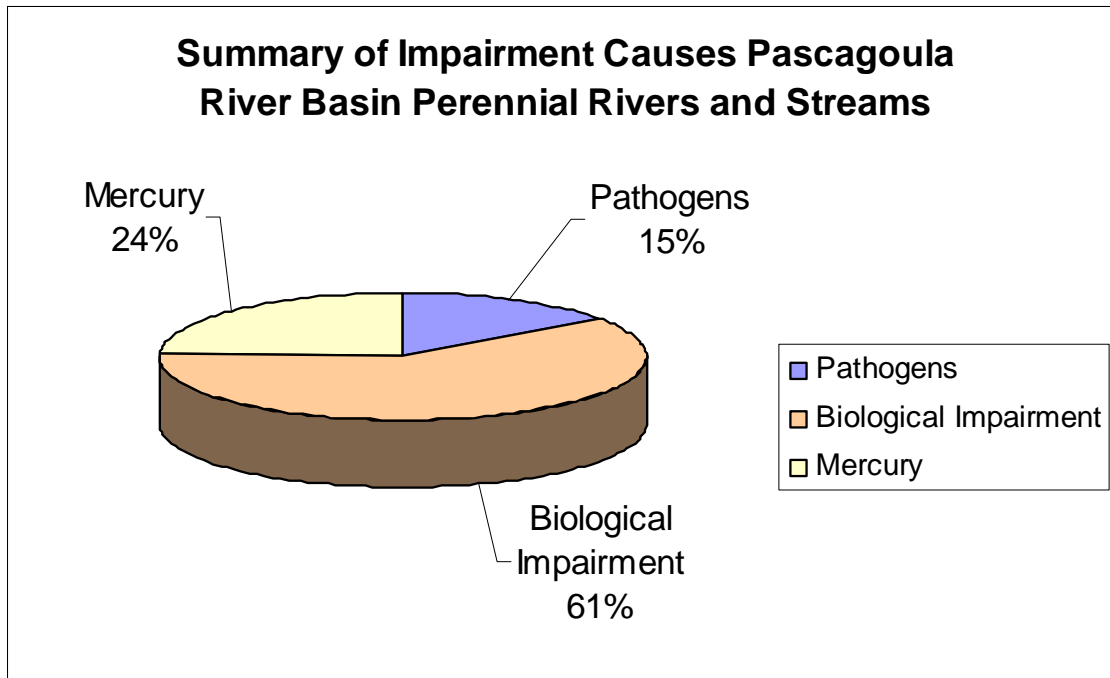
## **Causes and Sources of Impairment of Designated Uses**

Causes and sources of impairment were evaluated for streams and rivers having one or more uses impaired. Total assessed sizes of streams and rivers affected by various cause categories are given in Table 17 and Figure 37. For the majority of miles of assessed rivers not meeting their designated uses, impairment is caused by unknown pollutants or other factors contributing to biological impairment. In these cases, actual monitoring has detected biological impairment but the exact pollutant cause has yet to be determined. For these impaired waters, the next step in the state's water quality management process will be to conduct stressor identification analyses to identify the stressor(s) causing the impairment. Once the stressor(s) are identified, the Total Maximum Daily Load (TMDL) process where applicable can proceed. For stressors identified that are not applicable to the TMDL process, other water quality management actions will be needed. Other causes of impairment noted in the basin are from pathogens and mercury. The source of the pathogen and biological impairments in the Pascagoula River Basin is unknown. As stated above, the majority of impairment was determined to be biological and therefore sources of the impairment are yet to be determined. Mercury is believed to result from a combination of natural geologic conditions, old industrial point sources, and atmospheric deposition from coal fired plants and incinerators.

**Table 17: Summary of Impairment Causes-Pascagoula River Basin**

Cause Categories	Total Miles
Biological Impairment*	385
Pathogens	94
Mercury	154
<b>Total</b>	<b>633</b>

\* Note: Definitive cause identification is not possible at the time of assessment. Category applies to waters where biological indicators (macroinvertebrates) were used and impairment was indicated but further investigation needed to quantify pollutant.



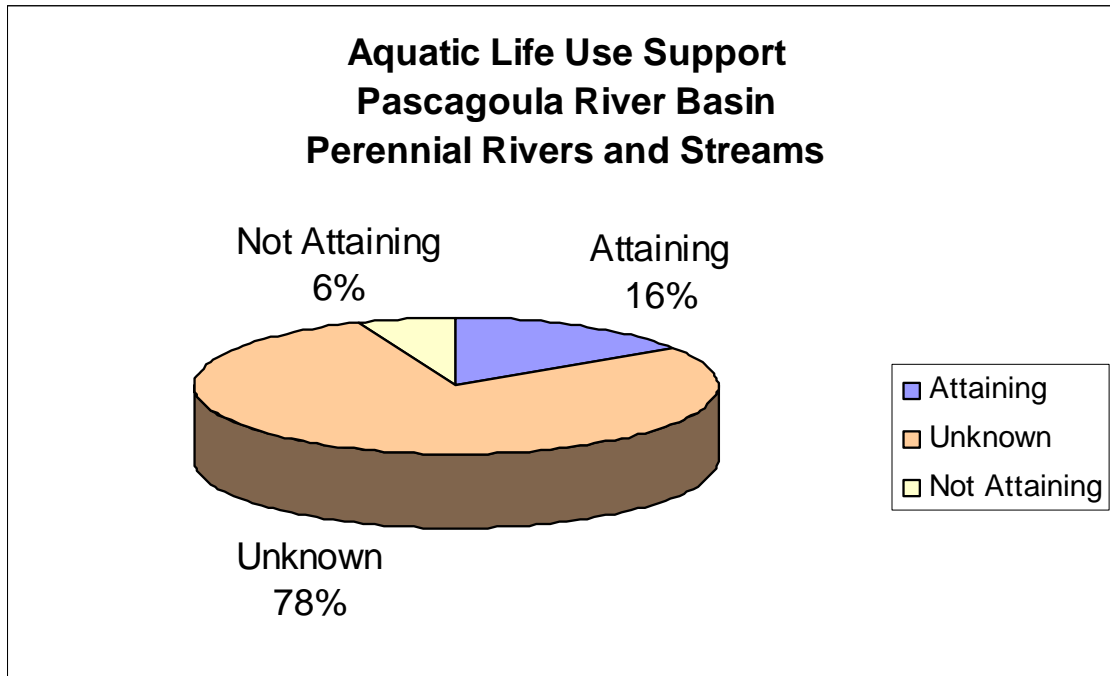
**Figure 37: Summary of Impairment Causes for Perennial Rivers and Streams-Pascagoula River Basin**

## Aquatic Life Use Support

As stated earlier, all of the Aquatic Life Use Support assessments were based on biological monitoring data collected as part of the development of Mississippi’s IBI process, M-BISQ. Of the Pascagoula River Basin’s assessed stream and river miles, approximately 964 miles of perennial rivers and streams are attaining their aquatic life use, while 385 miles were assessed as not attaining and are considered impaired (Table 18 and Figure 38). All of the non-attainment assessments are contributed to biological impairment and stressor identification studies are pending to determine the actual pollutant(s) contributing to the impairment. Figures 39-42 depict geo-referenced coverages of the Aquatic Life Use Support assessments for the Pascagoula River Basin.

**Table 18: Aquatic Life Use Support-Pascagoula River Basin**

Status	Miles
Attaining	964
Unknown	4,868
Total Not Attaining	385
TMDL not needed	0
TMDL needed	385
<b>Total</b>	<b>6,217</b>



**Figure 38: Aquatic Life Use Support-Pascagoula River Basin**

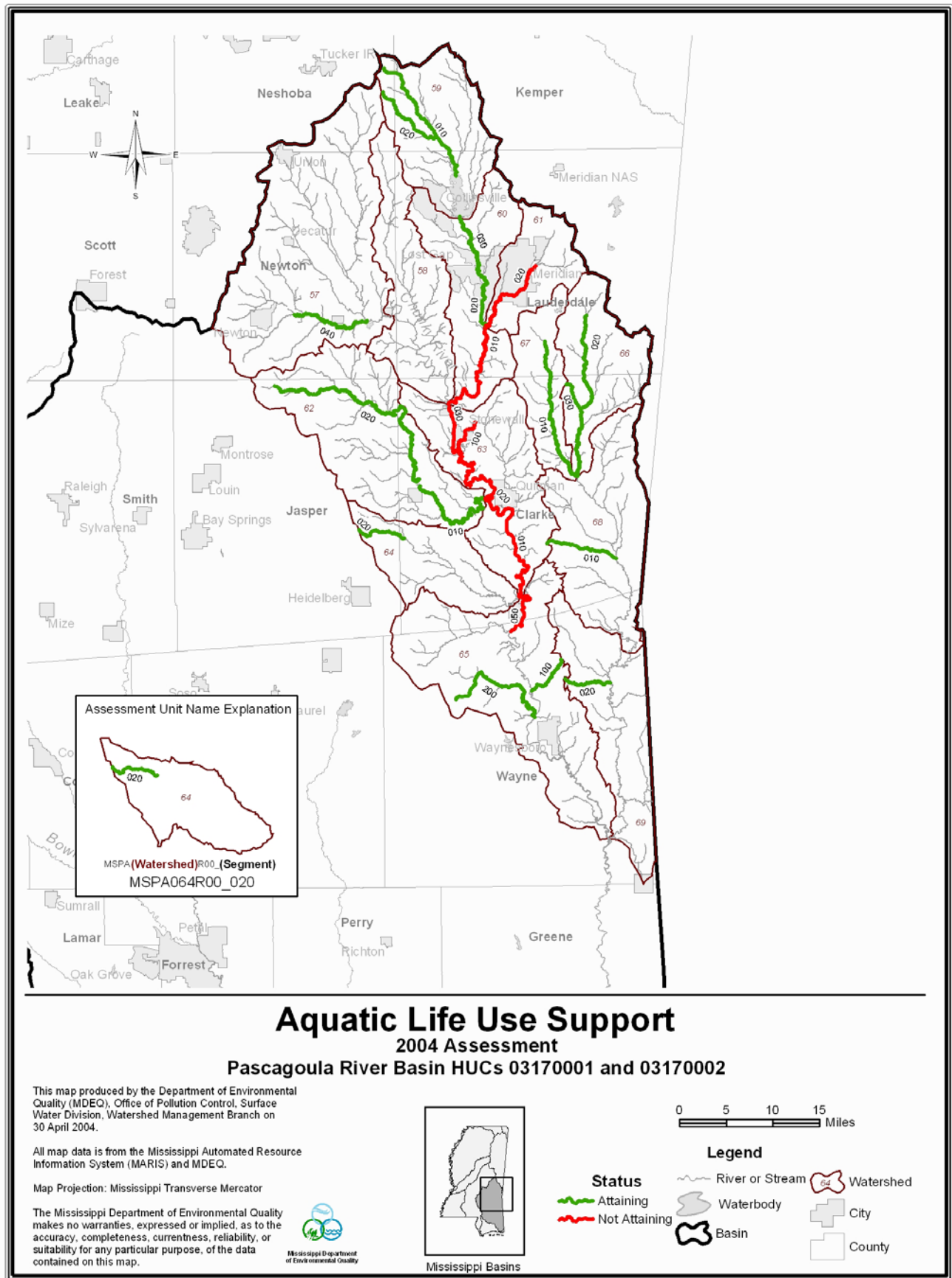


Figure 39: Aquatic Life Use Support Map-Upper Pascagoula River Basin

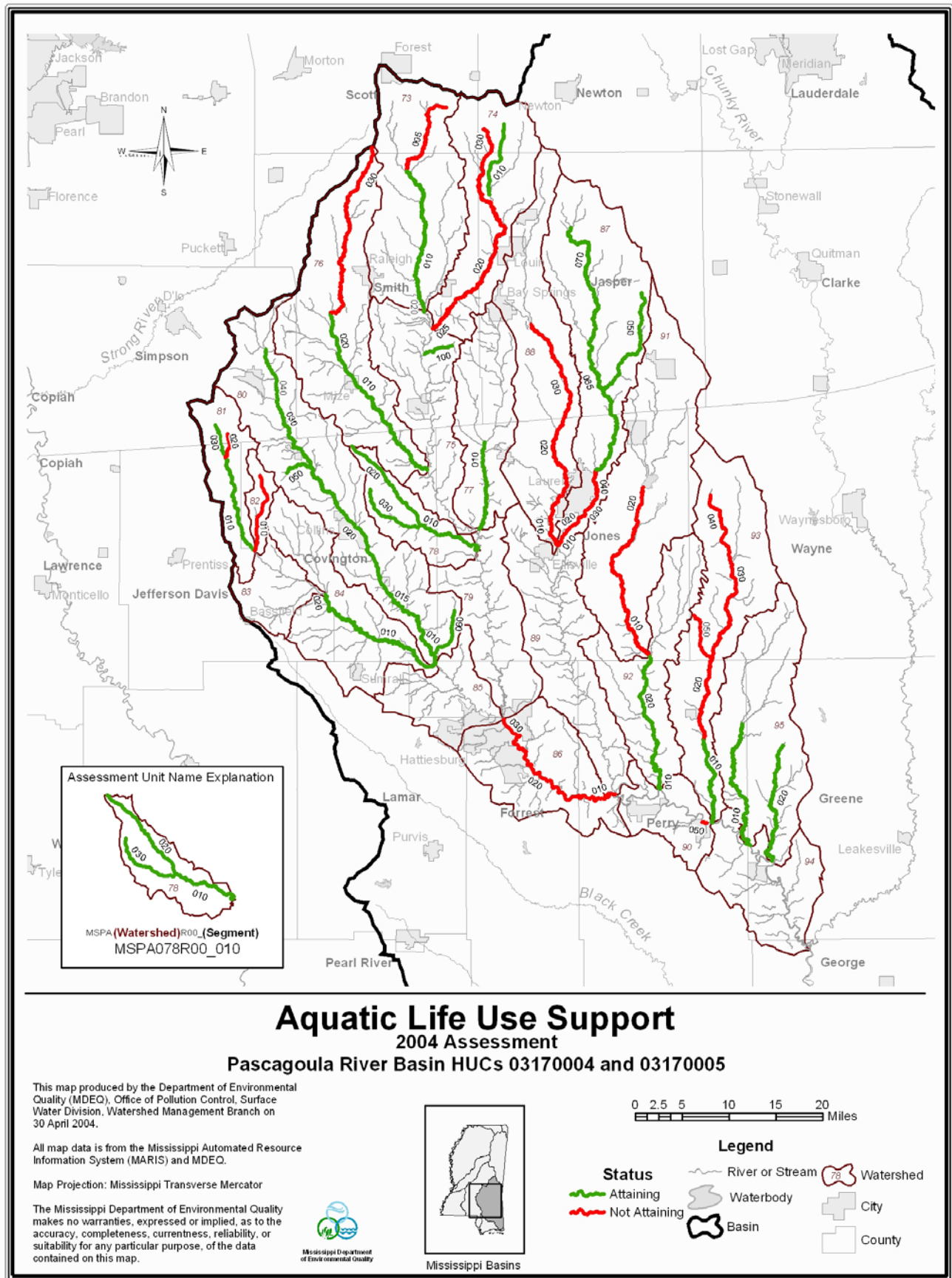
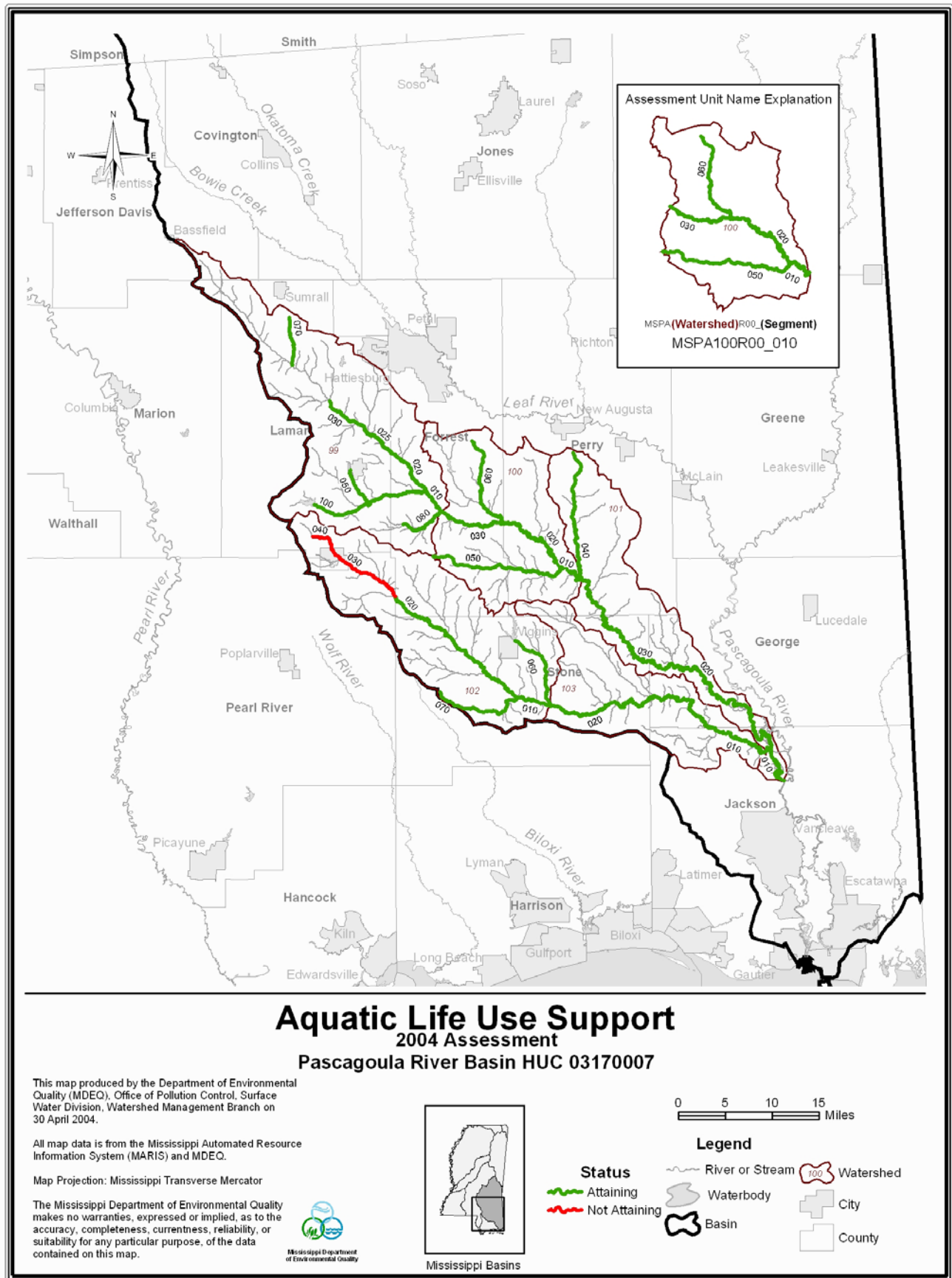


Figure 40: Aquatic Life Use Support Map-Middle Pascagoula River Basin



**Figure 41: Aquatic Life Use Support Map-Lower Pascagoula River Basin**

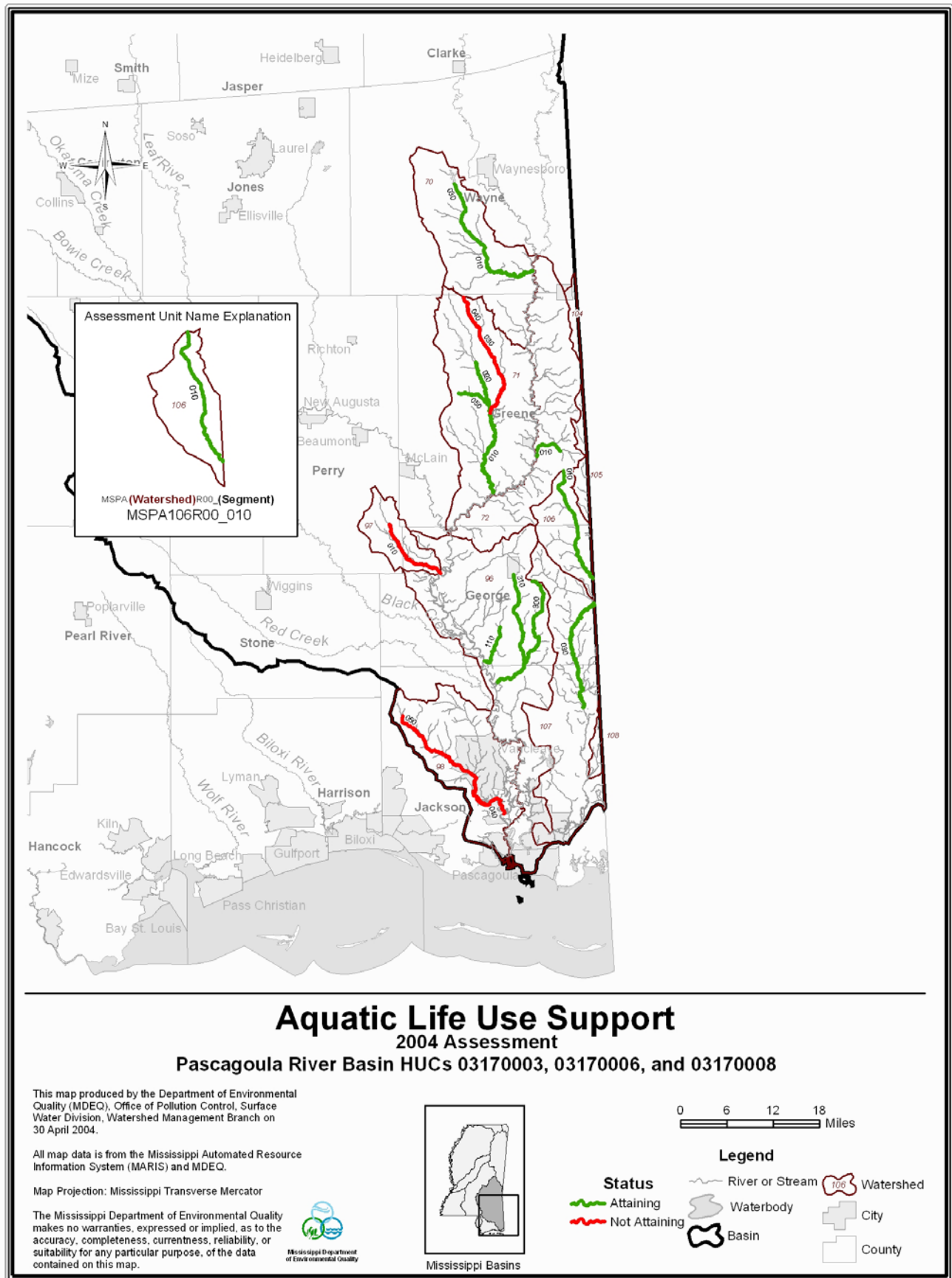


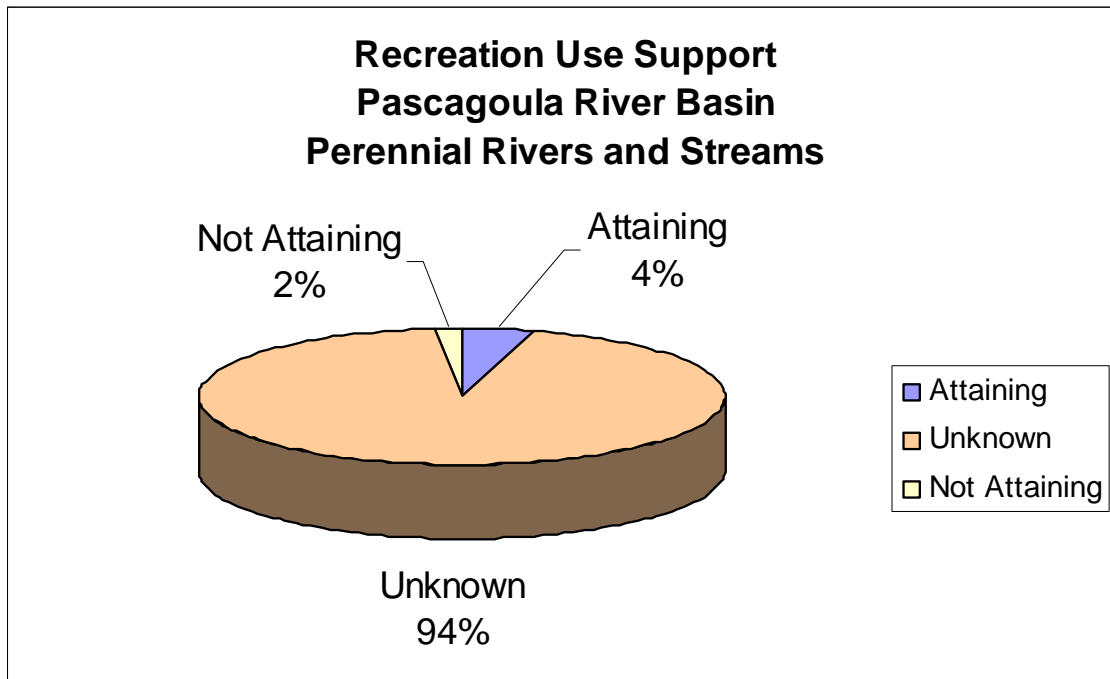
Figure 42: Aquatic Life Use Support Map-Lower Pascagoula River Basin

## Recreation Use Support

Data collected as part of a statewide §303(d) fecal coliform project were used to make the Recreation Use Support assessments. Of the Pascagoula River Basin’s assessed stream and river miles, approximately 274 miles of perennial rivers and streams are attaining their recreation use, while 95 miles were assessed as not attaining and are considered impaired (Table 19 and Figure 43). Figures 44-47 depict geo-referenced coverages of the Recreation Use Support assessments for the Pascagoula River Basin.

**Table 19: Recreation Use Support-Pascagoula River Basin**

Status	Miles
Attaining	274
Unknown	5,848
Total Not Attaining	95
TMDL not needed	83
TMDL needed	12
<b>Total</b>	<b>6,217</b>



**Figure 43: Recreation Use Support- Pascagoula River Basin**

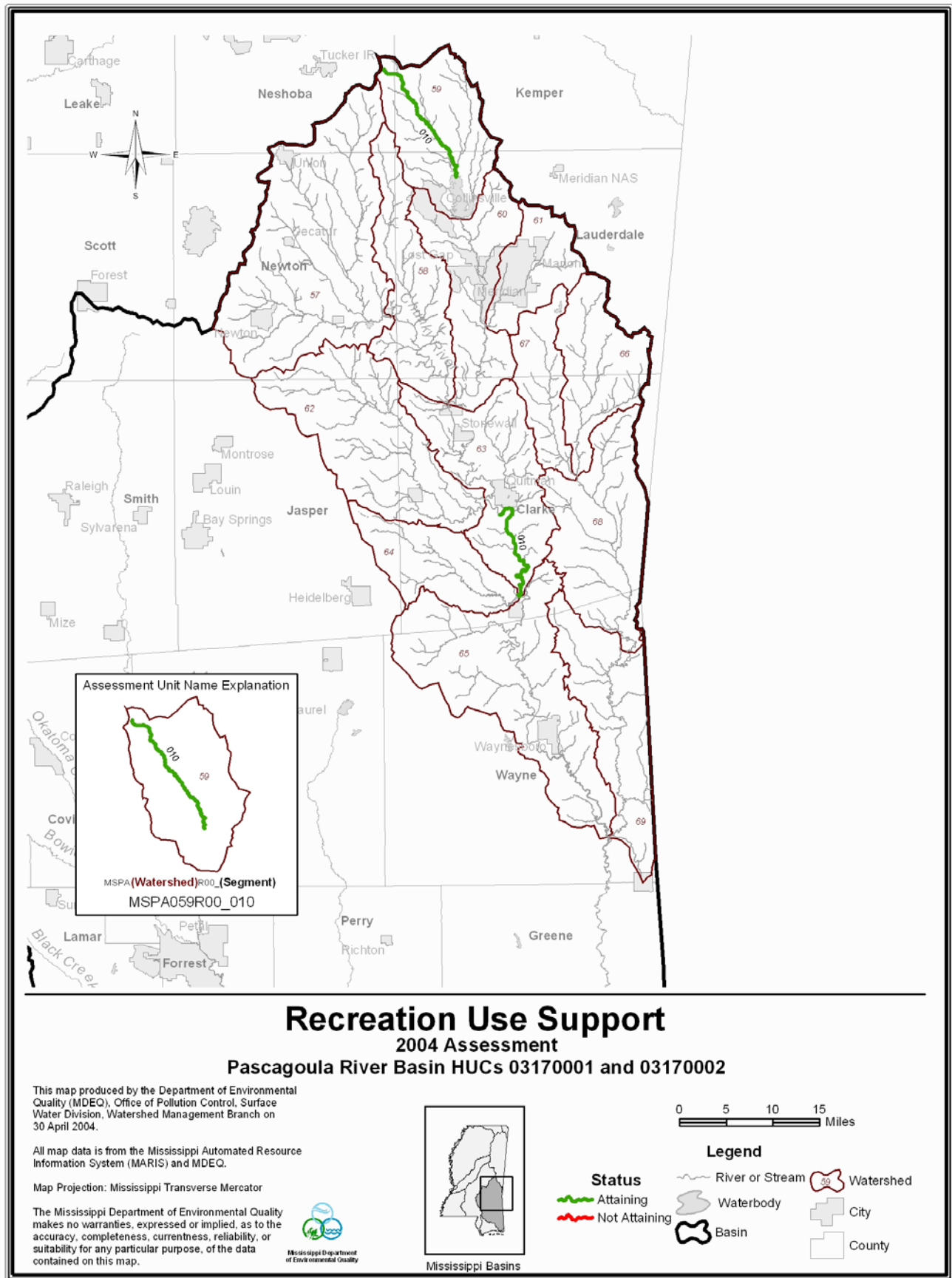


Figure 44: Recreation Use Support Map-Upper Pascagoula River Basin

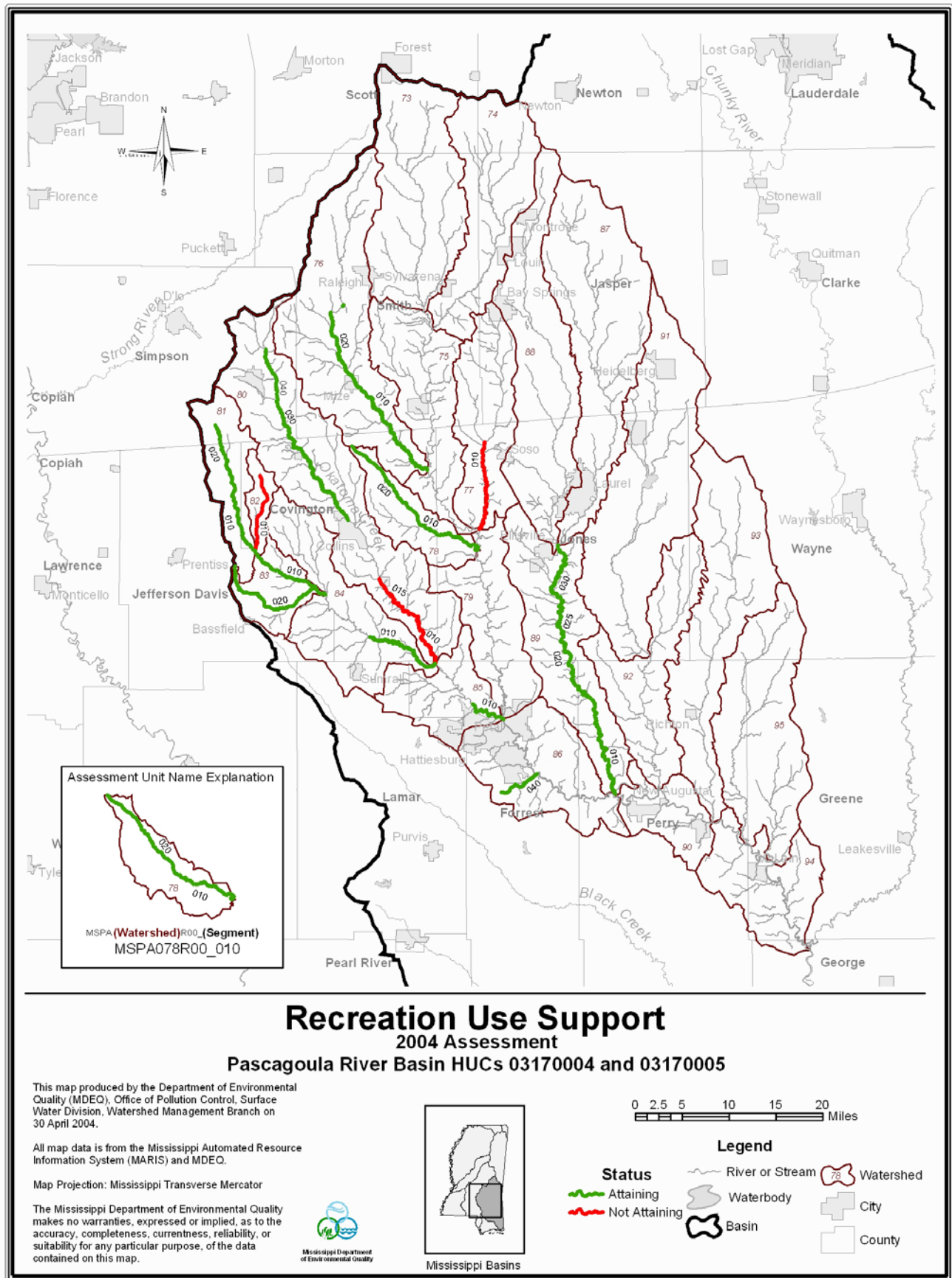
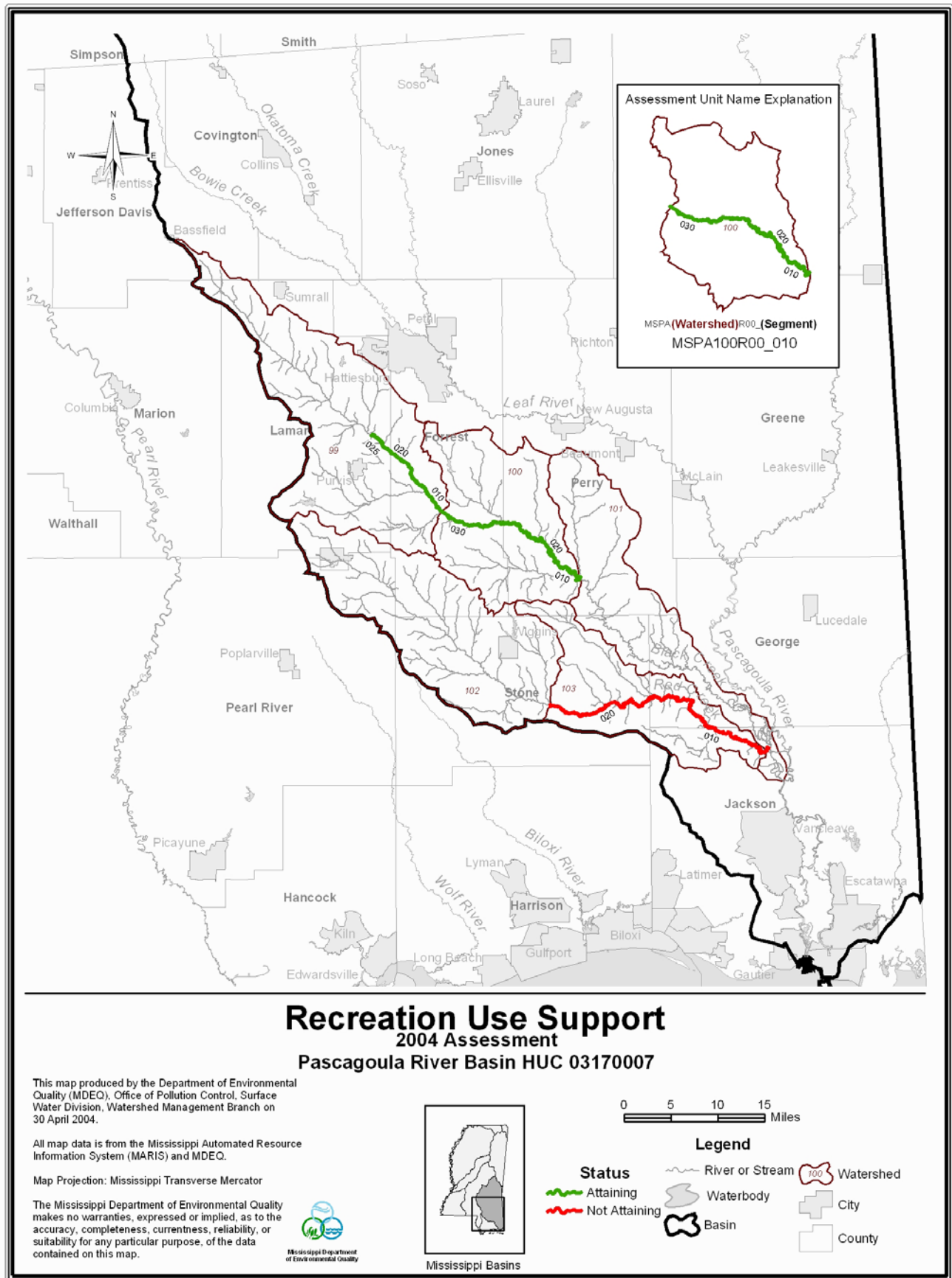


Figure 45: Recreation Use Support Map-Middle Pascagoula River Basin



**Figure 46: Recreation Use Support Map-Lower Pascagoula River Basin**

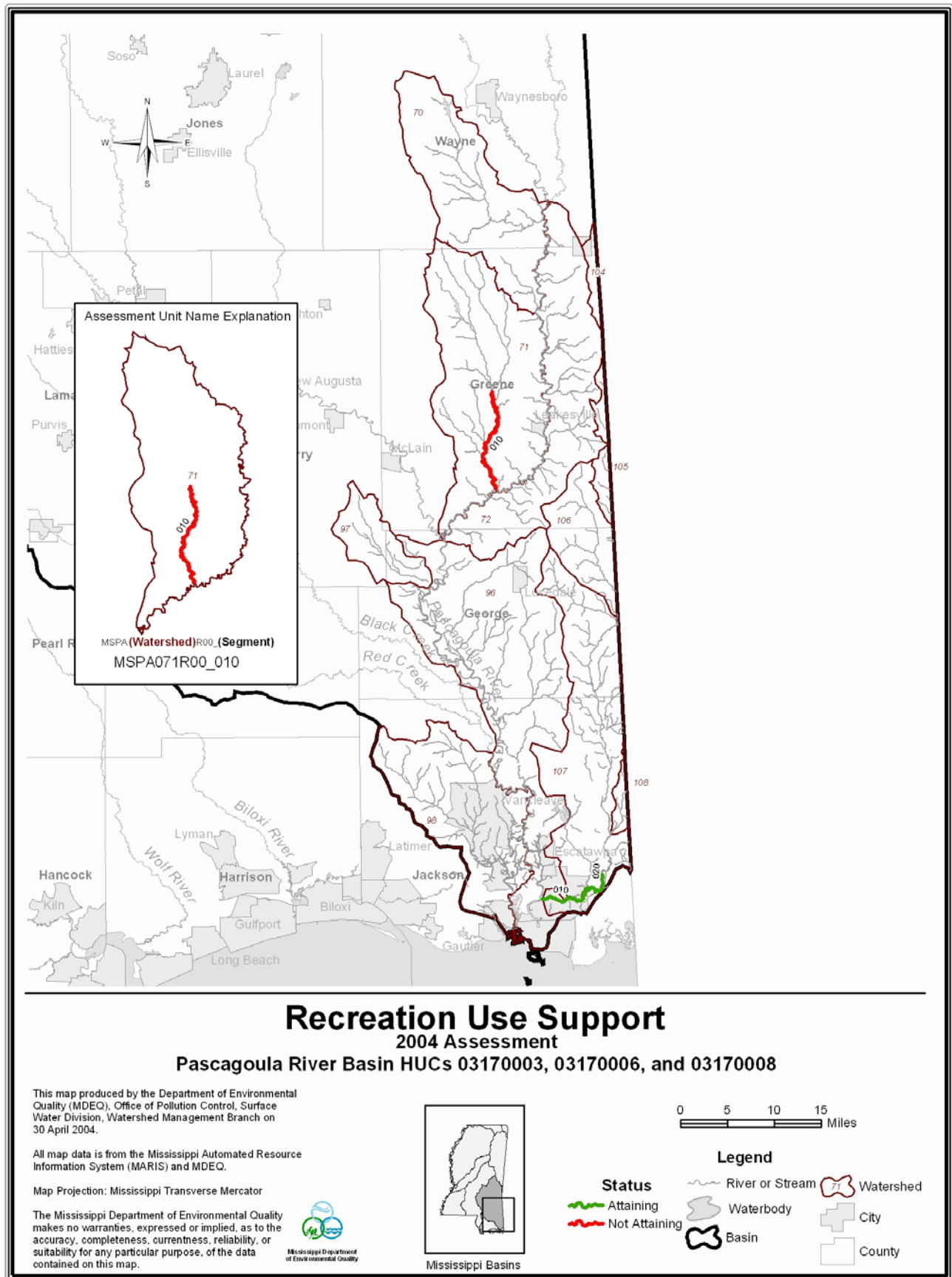


Figure 47: Recreation Use Support Map-Lower Pascagoula River Basin

## **Fish Consumption Use Support**

Data collected and analyzed as part of MDEQ's fish tissue monitoring program and warranting fish tissue advisories were used to make the Fish Consumption Use Support assessments. Currently, there are three water bodies in the Pascagoula River Basin with fish tissue advisories. These waters are Escatawpa River, Pascagoula River, and Archusa Creek Water Park. Therefore, of the Pascagoula River Basin's assessed stream and river miles, approximately 154 miles of perennial rivers and streams are not attaining their fish consumption use and are considered impaired. Of the total impaired miles, mercury TMDLs have been developed for 59 miles. The remaining 98 miles are scheduled for TMDL development. For more information on fish advisories and Fish Consumption Use Support assessment, refer to Part III, Public Health Concerns and Advisories, of the 2004 §305(b) report.

**Table 20: 2004 §305(b) Assessed Water Bodies-Pascagoula River Basin**

PASCAGOULA RIVER					
WATER BODY NAME	ASSESSMENT UNIT	§ 303(d)	COUNTY	USE	ASSESSMENT STATUS
ATKINSON CREEK	MSPA095R00_020	N/A	Greene	Aquatic Life Support	Attaining
LOCATION: FROM HEADWATERS TO MOUTH AT LEAF RIVER					
BEAVERDAM BRANCH	MSPA099R00_050	N/A	Lamar	Aquatic Life Support	Attaining
LOCATION: AT PURVIS FROM HEADWATERS TO CONFLUENCE WITH LITTLE BLACK CREEK					
BEAVERDAM CREEK	MSPA100R00_050	N/A	Forrest, Perry	Aquatic Life Support	Attaining
LOCATION: NEAR MAXIE FROM HEADWATERS TO CONFLUNCE WITH BLACK CREEK					
BIG CEDAR CREEK	MSPA096R00_310	N/A	George, Jackson	Aquatic Life Support	Attaining
LOCATION: FROM HEADWATERS TO MOUTH AT PASCAGOULA RIVER					
BIG CREEK	MSPA099R00_080	N/A	Forrest	Aquatic Life Support	Attaining
LOCATION: FROM HEADWATERS TO MOUTH AT BLACK CREEK					
BIG CREEK	MSPA077R00_010	MS077E	Jones	Aquatic Life Support	Attaining
LOCATION: NEAR SOSO FROM CONFLUENCE WITH MILL CREEK TO WATERSHED BOUNDARY (075 & 079)					
BIG CREEK	MSPA071R00_010	MS071BE	Greene	Aquatic Life Support	Attaining
LOCATION: NEAR LEAKESVILLE FROM CONFLUENCE OF MASON CREEK TO CONFLUENCE WITH CHICKASAWHAY RIVER					
BIG CREEK	MSPA071R00_020	N/A	Greene	Aquatic Life Support	Attaining
LOCATION: NEAR LEAKESVILLE FORM CONFLUENCE OF TURKEY FORK AND HELL HOLE CREEKS TO CONFLUENCE WITH MASON CREEK					

**PASCAGOULA RIVER**

<b>WATER BODY NAME</b>	<b>ASSESSMENT UNIT</b>	<b>§ 303(d)</b>	<b>COUNTY</b>	<b>USE</b>	<b>ASSESSMENT STATUS</b>
BIG CREEK	MSPA070R00_010	N/A	Wayne	Aquatic Life Support	Attaining
LOCATION: AT CLARA FROM CONFLUENCE OF MAYNOR CREEK TO CONFLUENCE WITH CHICKASAWHAY RIVER					
BLACK CREEK	MSPA101R00_010	N/A	Jackson	Aquatic Life Support	Attaining
LOCATION: NEAR VESTRY FROM CONFLUENCE WITH RED CREEK TO HUC BOUNDARY					
BLACK CREEK	MSPA101R00_030	N/A	George, Perry, Stone	Aquatic Life Support	Attaining
LOCATION: NEAR BARBARA FROM CONFLUENCE WITH CYPRESS CREEK TO CONFLUENCE WITH SWEETWATER CREEK					
BLACK CREEK	MSPA099R00_020	N/A	Forrest, Lamar	Aquatic Life Support Primary Contact (Recr)	Attaining Attaining
LOCATION: NEAR PURVIS FROM AMERADA HESS DISCHARGE AT HWY 11 TO CONFLUENCE WITH LITTLE BLACK CREEK					
BLACK CREEK	MSPA100R00_010	N/A	Perry	Aquatic Life Support Primary Contact (Recr)	Attaining Attaining
LOCATION: NEAR BARBARA FROM CONFLUENCE WITH BEAVERDAM CREEK TO CONFLUENCE WITH CYPRESS CREEK					
BLACK CREEK	MSPA100R00_030	N/A	Forrest	Aquatic Life Support Primary Contact (Recr)	Attaining Attaining
LOCATION: NEAR BROOKLYN FROM CONFLUENCE WITH BIG CREEK TO CONFLUENCE WITH POPLAR CREEK					
BLACK CREEK	MSPA099R00_030	N/A	Lamar	Aquatic Life Support	Attaining
LOCATION: NEAR PURVIS FROM CONFLUENCE WITH LITTLE BLACK CREEK AND PERKINS CREEK TO AMERADA HESS OUTFALL					
BLACK CREEK	MSPA099R00_025	N/A	Lamar	Aquatic Life Support Primary Contact (Recr)	Attaining Attaining
LOCATION: NEAR PURVIS FROM AMERADA HESS DISCHARGE AT HWY 11 TO CONFLUENCE WITH LITTLE BLACK					

**PASCAGOULA RIVER**

<b>WATER BODY NAME</b>	<b>ASSESSMENT UNIT</b>	<b>§ 303(d)</b>	<b>COUNTY</b>	<b>USE</b>	<b>ASSESSMENT STATUS</b>
BLACK CREEK	MSPA101R00_020	N/A	George, Jackson	Aquatic Life Support	Attaining
LOCATION: NEAR VESTRY FROM CONFLUENCE WITH SWEETWATER CREEK TO CONFLUENCE WITH RED CREEK					
BLACK CREEK	MSPA100R00_020	N/A	Forrest, Perry	Aquatic Life Support Primary Contact (Recr)	Attaining Attaining
LOCATION: NEAR JANICE FROM CONFLUENCE WITH POPLAR CREEK TO CONFLUENCE WITH BEAVERDAM CREEK					
BLACK CREEK	MSPA099R00_010	N/A	Forrest	Aquatic Life Support Primary Contact (Recr)	Attaining Attaining
LOCATION: NEAR PURVIS CONFLUENCE WITH LITTLE BLACK CREEK TO CONFLUENCE WITH BIG CREEK					
BLUFF CREEK	MSPA098R00_050	MS098BE	Jackson	Aquatic Life Support	Not Attaining, Biological Impairment
LOCATION: NEAR VANCLEAVE FROM HEADWATERS TO CONFLUENCE WITH MOUNGERS CREEK					
BLUFF CREEK	MSPA098R00_040	MS098BE	Jackson	Aquatic Life Support	Not Attaining, Biological Impairment
LOCATION: NEAR GAUTIER FROM CONFLUENCE WITH MOUNGERS CREEK TO MOUTH AT WEST PASCAGOULA RIVER					
BOGUE HOMO	MSPA091R00_010	MS091E	Jones	Aquatic Life Support	Not Attaining, Biological Impairment
LOCATION: AT TUCKERS CROSSING FROM CONFLUENCE WITH MILL CREEK TO WATERSHED BOUNDARY (092)					
BOGUE HOMO	MSPA092R00_010	N/A	Perry	Aquatic Life Support	Attaining
LOCATION: NEAR HENTONVILLE FROM CONFLUENCE WITH BUCK CREEK TO CONFLUENCE WITH LEAF RIVER					
BOGUE HOMO	MSPA092R00_020	N/A	Jones, Perry	Aquatic Life Support	Attaining
LOCATION: NEAR WHITFIELD FROM CONFLUENCE WITH TIGER CREEK TO CONFLUENCE WITH BUCK CREEK					

**PASCAGOULA RIVER**

<b>WATER BODY NAME</b>	<b>ASSESSMENT UNIT</b>	<b>§ 303(d)</b>	<b>COUNTY</b>	<b>USE</b>	<b>ASSESSMENT STATUS</b>
BOGUE HOMO	MSPA091R00_020	MS091E	Jones	Aquatic Life Support	Not Attaining, Biological Impairment
LOCATION: AT CLEO FROM LAKE BOGUE HOMO TO CONFLUENCE AT MILL CREEK					
BOSTIC BRANCH	MSPA063R00_100	MS063E1	Clarke	Aquatic Life Support	Not Attaining, Biological Impairment
LOCATION: AT STONEWALL FROM HEADWTERS TO CHICKASAWHAY RIVER					
BOWIE CREEK	MSPA081R00_020	N/A	Jefferson Davis, Simpson	Aquatic Life Support	Attaining
LOCATION: NEAR JAMESVILLE FROM HEADWATERS TO CONFLUENCE WITH SKIFFER CREEK					
BOWIE CREEK	MSPA083R00_010	N/A	Covington, Jefferson Davis	Secondary Contact	Attaining
LOCATION: NEAR BASSFIELD FROM MOUTH OF WATERSHED 082 TO MOUTH OF WATERSHED 084					
BOWIE CREEK	MSPA084R00_020	N/A	Covington, Jefferson Davis	Aquatic Life Support	Attaining
LOCATION: NEAR SUMRALL FROM WATERSHED BOUNDARY 083 TO HWY 589 BRIDGE					
BOWIE CREEK	MSPA084R00_010	N/A	Covington, Forrest	Aquatic Life Support	Attaining
LOCATION: NEAR SUMRALL FROM HWY 589 BRIDGE TO CONFLUENCE WITH BOWIE RIVER					
BOWIE CREEK	MSPA081R00_010	N/A	Covington, Jefferson Davis	Aquatic Life Support	Attaining
LOCATION: AT MT CARMEL FROM CONFLUENCE WITH SKIFFER CREEK TO WATERSHED BOUNDARY (082)					
BOWIE RIVER	MSPA085R00_010	N/A	Forrest	Secondary Contact	Attaining
LOCATION: AT HATTIESBURG FROM I-59 TO MOUTH AT LEAF RIVER					

Mississippi 2004 §305(b) Water Quality Assessment Report Addendum

**PASCAGOULA RIVER**

<b>WATER BODY NAME</b>	<b>ASSESSMENT UNIT</b>	<b>§ 303(d)</b>	<b>COUNTY</b>	<b>USE</b>	<b>ASSESSMENT STATUS</b>
BRUSHY CREEK	MSPA106R00_010	N/A	George, Greene	Aquatic Life Support	Attaining
LOCATION: FROM HEADWATERS TO AL STATE LINE					
BUCKATUNNA CREEK	MSPA066R00_010	N/A	Clarke	Aquatic Life Support	Attaining
LOCATION: NEAR SYKES FROM CONFLUENCE WITH HURRICANE CREEK TO MOUTH OF WATERSHED 068					
BUCKATUNNA CREEK	MSPA066R00_020	N/A	Clarke, Lauderdale	Aquatic Life Support	Attaining
LOCATION: NEAR INCREASE FROM CONFLUENCE WITH BUCKATUNA RIVER AND COKER'S BRANCH TO CONFLUENCE WITH HURRICANE CREEK					
CASTAFFA CREEK	MSPA064R00_020	N/A	Clarke, Jasper	Aquatic Life Support	Attaining
LOCATION: NEAR PACHUTA FROM HEADWATERS TO MOUTH AT SHUBUTA CREEK					
CEDAR CREEK	MSPA074R00_030	N/A	Jasper, Newton	Aquatic Life Support	Attaining
LOCATION: FROM HEADWATERS TO MOUTH AT QUARTERLIAH CREEK					
CHICKASAWHAY RIVER	MSPA063R00_010	MSUCHKRE1	Clarke	Aquatic Life Support	Not Attaining, Biological Impairment
LOCATION: FROM HWY 45 TO WATERSHED BOUNDARY (065)					
CHICKASAWHAY RIVER	MSPA063R00_030	MSUCHKRE1	Clarke	Aquatic Life Support	Not Attaining, Biological Impairment
LOCATION: AT ENTERPRISE FROM CONFLUENCE OF CHUNKY RIVER AND OKATIBBEE CREEK TO STONEWALL POTW OUTFALL					
CHICKASAWHAY RIVER	MSPA065R00_050	MSUCHKRE1	Clarke, Wayne	Aquatic Life Support	Not Attaining, Biological Impairment
LOCATION: FROM WATERSHED BOUNDARY (063) TO CONFLUENCE WITH EUCUTTA CREEK					

**PASCAGOULA RIVER**

<b>WATER BODY NAME</b>	<b>ASSESSMENT UNIT</b>	<b>§ 303(d)</b>	<b>COUNTY</b>	<b>USE</b>	<b>ASSESSMENT STATUS</b>
CHICKASAWHAY RIVER	MSPA063R00_020	MSUCHKRE1	Clarke	Aquatic Life Support	Not Attaining, Biological Impairment
LOCATION: FROM STONEWALL POTW OUTFALL TO HWY 45					
COLDWATER CREEK	MSPA069R00_020	N/A	Wayne	Aquatic Life Support	Attaining
LOCATION: FROM HEADWATERS TO MOUTH AT BUCATUNNA CREEK					
CYPRESS CREEK	MSPA101R00_040	N/A	Perry	Aquatic Life Support	Attaining
LOCATION: NEAR BARBARA FROM HEADWATERS TO CONFLUENCE WITH BLACK CREEK					
DRY CREEK	MSPA082R00_010	MS082E	Covington	Aquatic Life Support	Not Attaining, Biological Impairment
				Secondary Contact	Not Attaining, TMDL Completed
LOCATION: NEAR MT CARMEL FROM HEADWATERS TO MOUTH AT BOWIE CREEK					
EAST PASCAGOULA RIVER	MSPA096R00_040	MSEPASRM1	Jackson	Fish Consumption	Not Attaining
LOCATION: NEAR COLLTOWN FROM CONFLUENCE WITH CLARK BAYOU TO CONFLUENCE WITH SMEAR BAYOU					
EAST PASCAGOULA RIVER	MSPA096R00_020	MSEPASRM1	Jackson	Fish Consumption	Not Attaining
LOCATION: NEAR PASCAGOULA FROM CONFLUENCE WITH ESCATAWPA RIVER TO KREBS LAKE OUTLET AND MARSH LAKE CUT					
EAST PASCAGOULA RIVER	MSPA096R00_030	MSEPASRM1	Jackson	Fish Consumption	Not Attaining
LOCATION: NEAR ESCATAWPA FROM CONFLUENCE WITH SMEAR BAYOU TO CONFLUENCE WITH ESCATAWPA RIVER					
EAST PASCAGOULA RIVER	MSPA096R00_050	MSEPASRM1	Jackson	Fish Consumption	Not Attaining
LOCATION: NEAR COLLTOWN FROM CONFLUENCE WITH WEST PASCAGOULA RIVER TO CONFLUENCE WITH CLARK BAYOU					

**PASCAGOULA RIVER**

<b>WATER BODY NAME</b>	<b>ASSESSMENT UNIT</b>	<b>§ 303(d)</b>	<b>COUNTY</b>	<b>USE</b>	<b>ASSESSMENT STATUS</b>
EAST PASCAGOULA RIVER	MSPA096R00_010	MSEPASRM1	Jackson	Fish Consumption	Not Attaining
LOCATION: AT PASCAGOULA FROM MARSH LAKE CUT AND KREBS LAKE OUTLET TO MOUTH AT MS SOUND					
ESCATAWPA RIVER	MSPA107R00_010	MS107M3	Jackson	Fish Consumption	Not Attaining, TMDL Completed
LOCATION: AT PASCAGOULA FROM MILE 10 (ABOVE CONFLUENCE WITH BLACK CREEK) TO MOUTH				Secondary Contact	Attaining
ESCATAWPA RIVER	MSPA107R00_020	MS107M3	Jackson	Fish Consumption	Not Attaining, TMDL Completed
LOCATION: NEAR PASCAGOULA FROM IP CANAL TO MILE 10				Secondary Contact	Attaining
ESCATAWPA RIVER	MSPA107R00_030	MS107M1	George, Jackson	Aquatic Life Support	Attaining
LOCATION: NEAR AGRICOLA FROM MS/AL STATE LINE TO SPRING CREEK				Fish Consumption	Not Attaining, TMDL Completed
ESCATAWPA RIVER	MSPA107R00_025	MS107M2	Jackson	Fish Consumption	Not Attaining, TMDL Completed
LOCATION: NEAR AGRICOLA FROM SPRING CREEK TO IP CANAL					
FIVEMILE CREEK	MSPA068R00_010	N/A	Clarke	Aquatic Life Support	Attaining
LOCATION: NEAR CARMICHAEL FROM HEADWATERS TO CONFLUENCE WITH CEDAR CREEK					
FLINT CREEK	MSPA102R00_060	N/A	Stone	Aquatic Life Support	Attaining
LOCATION: FROM HEADWATERS TO MOUTH AT RED CREEK					
GAINES CREEK	MSPA095R00_010	N/A	Greene, Perry	Aquatic Life Support	Attaining
LOCATION: NEAR NEHTONVILLE FROM CONFLUENCE OF PINEY WOODS CREEK AND SAND HILL CREEK TO CONFLUENCE WITH LEAF RIVER					

**PASCAGOULA RIVER**

<b>WATER BODY NAME</b>	<b>ASSESSMENT UNIT</b>	<b>§ 303(d)</b>	<b>COUNTY</b>	<b>USE</b>	<b>ASSESSMENT STATUS</b>
HORTONS' MILL CREEK	MSPA065R00_100	N/A	Wayne	Aquatic Life Support	Attaining
LOCATION: FROM HEADWATERS TO MOUTH AT CHICKASAWHAY RIVER					
HOUSTON CREEK	MSPA059R00_020	N/A	Kemper, Neshoba	Aquatic Life Support	Attaining
LOCATION: FROM HEADWATERS TO MOUTH AT OKATIBBEE CREEK					
INDIAN CREEK	MSPA096R00_110	N/A	George	Aquatic Life Support	Attaining
LOCATION: NEAR BASIN FROM HEADWATERS TO MOUTH AT PASCAGOULA RIVER					
IRBY MILL CREEK	MSPA066R00_030	N/A	Clarke	Aquatic Life Support	Attaining
LOCATION: FROM HEADWATERS TO BUCATUNNA CREEK					
KEYS MILL CREEK	MSPA075R00_100	N/A	Smith	Aquatic Life Support	Attaining
LOCATION: FROM HEADWATERS TO MOUTH AT LEAF RIVER					
KITRELL CREEK	MSPA071R00_050	N/A	Greene	Aquatic Life Support	Attaining
LOCATION: FROM HEADWATERS TO MOUTH AT BIG CREEK					
LEAF RIVER	MSPA086R00_030	MS086E	Forrest	Aquatic Life Support	Not Attaining, Biological Impairment
LOCATION: AT HATTIESBURG FROM CONFLUENCE OF BOWIE RIVER TO HATTIESBURG POTW OUTFALL					
LEAF RIVER	MSPA086R00_010	MS086E	Forrest, Perry	Aquatic Life Support	Not Attaining, Biological Impairment
LOCATION: NEAR MAHNED FROM CONFLUENCE WITH REESE CREEK TO CONFLUENCE WITH TALLAHALA CREEK					

**PASCAGOULA RIVER**

<b>WATER BODY NAME</b>	<b>ASSESSMENT UNIT</b>	<b>§ 303(d)</b>	<b>COUNTY</b>	<b>USE</b>	<b>ASSESSMENT STATUS</b>
LEAF RIVER	MSPA086R00_020	MS086E	Forrest	Aquatic Life Support	Not Attaining, Biological Impairment
LOCATION: AT HATTIESBURG FROM HATTIESBURG OUTFALL TO CONFLUENCE WITH REESE CREEK					
LEONARDS CREEK	MSPA080R00_050	N/A	Covington	Aquatic Life Support	Attaining
LOCATION: FROM HEADWATERS TO MOUTH AT OKATOMA CREEK					
LITTLE BLACK CREEK	MSPA099R00_100	N/A	Forrest, Lamar	Aquatic Life Support	Attaining
LOCATION: FROM HEADWATERS AT WATER PARK TO MOUTH AT BLACK CREEK					
LITTLE CEDAR CREEK	MSPA096R00_300	N/A	George	Aquatic Life Support	Attaining
LOCATION: NEAR LUCEDALE FROM HEADWATERS TO CONFLUENCE WITH BIG CEDAR CREEK					
LONG CREEK	MSPA067R00_010	N/A	Clarke, Lauderdale	Aquatic Life Support	Attaining
LOCATION: NEAR MIDDLETON FROM CONFLUENCE WITH GAY'S BRANCH NEAR PLEASANT HILL TO CONFLUENCE WITH BUCKATUNNA CREEK AT MOUTH WATERSHED 068					
LOWER SOUINLOVEY CREEK	MSPA062R00_010	N/A	Clarke	Aquatic Life Support	Attaining
LOCATION: AT PACHUTA FROM I-59 TO MOUTH AT CHICKASAWHAY RIVER					
MASON CREEK	MSPA071R00_030	MS071ME	Greene	Aquatic Life Support	Not Attaining, Biological Impairment
LOCATION: AT CARSON CITY FROM CONFLUENCE OF EAST MASON CREEK TO CONFLUENCE WITH BIG CREEK					
MASON CREEK	MSPA071R00_040	MS071ME	Greene	Aquatic Life Support	Not Attaining, Biological Impairment
LOCATION: FROM HEADWATERS TO CONFLUENCE WITH EAST MASON CREEK					

**PASCAGOULA RIVER**

<b>WATER BODY NAME</b>	<b>ASSESSMENT UNIT</b>	<b>§ 303(d)</b>	<b>COUNTY</b>	<b>USE</b>	<b>ASSESSMENT STATUS</b>
MAYNOR CREEK	MSPA070R00_030	N/A	Wayne	Aquatic Life Support	Attaining
LOCATION: FROM MAYNOR CREEK WATER PARK TO CONFLUENCE WITH BIG CREEK					
MEADOW CREEK	MSPA072R00_010	N/A	Greene	Aquatic Life Support	Attaining
LOCATION: FROM HEADWATERS TO MOUTH AT CHICKASAWHAY RIVER					
MONROE CREEK	MSPA099R00_070	N/A	Lamar	Aquatic Life Support	Attaining
LOCATION: NEAR OLOH FROM HEADWATERS TO CONFLUENCE WITH BLACK CREEK AT HWY 98					
MYERS CREEK	MSPA086R00_040	N/A	Forrest	Secondary Contact	Attaining
LOCATION: FROM HEADWATERS TO MOUTH AT LEAF RIVER					
OAKAHAY CREEK	MSPA076R00_020	N/A	Smith	Aquatic Life Support	Attaining
LOCATION: NEAR RALEIGH FROM CONFLUENCE WITH CLEAR CREEK TO CONFLUENCE WITH COLE BRANCH					
OAKAHAY CREEK	MSPA076R00_010	N/A	Covington, Smith	Aquatic Life Support	Attaining
LOCATION: AT MIZE FROM CONFLUENCE WITH COLE BRANCH TO WATESHED BOUNDARY (075)					
OAKAHAY CREEK	MSPA076R00_030	MS076E	Scott, Smith	Aquatic Life Support	Not Attaining, Biological Impairment
LOCATION: NEAR LENON FROM HEADWATERS TO CONFLUENCE WITH CLEAR CREEK					
OAKY WOODS CREEK	MSPA078R00_010	N/A	Covington, Jones	Aquatic Life Support	Attaining
LOCATION: NEAR SAND HILL FROM CONFLUENCE WITH STATION CREEK TO CONFLUENCE WITH LEAF RIVER					

**PASCAGOULA RIVER**

<b>WATER BODY NAME</b>	<b>ASSESSMENT UNIT</b>	<b>§ 303(d)</b>	<b>COUNTY</b>	<b>USE</b>	<b>ASSESSMENT STATUS</b>
OAKEY WOODS CREEK	MSPA078R00_020	N/A	Covington	Aquatic Life Support Secondary Contact	Attaining Attaining
LOCATION: NEAR REDDOCH FROM HEADWATERS TO CONFLUENCE WITH STATION CREEK					
OKATIBBEE CREEK	MSPA060R00_030	N/A	Lauderdale	Aquatic Life Support	Attaining
LOCATION: NEAR MERIDIAN FROM OKATIBBEE RESERVOIR TO HWY 19					
OKATIBBEE CREEK	MSPA060R00_020	N/A	Lauderdale	Aquatic Life Support	Attaining
LOCATION: FROM HWY 19 TO CONFLUENCE WITH SOWASHEE CREEK					
OKATIBBEE CREEK	MSPA060R00_010	MS060	Clarke, Lauderdale	Aquatic Life Support	Not Attaining, Biological Impairment
LOCATION: AT ARUNDEL FROM CONFLUENCE WITH SOWASHEE CREEK TO CONFLUENCE WITH CHUNKY RIVER					
OKATIBBEE CREEK	MSPA059R00_010	N/A	Kemper, Lauderdale, Neshoba	Aquatic Life Support Secondary Contact	Attaining Attaining
LOCATION: FROM HEADWATERS TO OKATIBBEE RESERVOIR					
OKATOMA CREEK	MSPA080R00_010	MS0802M	Covington, Forrest	Aquatic Life Support Primary Contact (Recr)	Attaining Not Attaining, TMDL Completed
LOCATION: FROM CONFLUENCE WITH NICHOLS BRANCH TO CONFLUENCE WITH BOWIE RIVER AT WATERSHED BOUNDARY					
OKATOMA CREEK	MSPA080R00_015	MS0802M	Covington	Aquatic Life Support Primary Contact (Recr)	Attaining Not Attaining, TMDL Completed
LOCATION: AT SEMINARY FROM CONFLUENCE WITH BEG SWAMP CREEK TO CONFLUENCE WITH NICHOLS BRANCH					
OKATOMA CREEK	MSPA080R00_020	N/A	Covington	Aquatic Life Support	Attaining
LOCATION: FROM SANDERSON FARM OUTFALL TO CONFLUENCE WITH NICHOLS BRANCH					

**PASCAGOULA RIVER**

<b>WATER BODY NAME</b>	<b>ASSESSMENT UNIT</b>	<b>§ 303(d)</b>	<b>COUNTY</b>	<b>USE</b>	<b>ASSESSMENT STATUS</b>
OKATOMA CREEK	MSPA080R00_030	N/A	Covington, Simpson	Aquatic Life Support Secondary Contact	Attaining Attaining
LOCATION: AT MOUNT OLIVE FROM CONFLUENCE WITH GOODWIN CREEK TO SANDERSON FARMS OUTFALL					
OKATOMA CREEK	MSPA080R00_040	N/A	Simpson	Aquatic Life Support Secondary Contact	Attaining Attaining
LOCATION: NEAR MAGEE FROM HEADWATERS TO CONFLUENCE WITH GOODWIN CREEK					
PASCAGOULA RIVER	MSPA096R00_060	MSPASRM1	Jackson	Fish Consumption	Not Attaining
LOCATION: NEAR THREE RIVERS FROM CUMBEST BLUFF TO CONFLUENCE WITH WEST PASCAGOULA RIVER					
PASCAGOULA RIVER	MSPA096R00_080	MSPASRM1	George, Jackson	Fish Consumption	Not Attaining
LOCATION: NEAR BASIN FROM BIG CREEK TO CONFLUENCE WITH BIG CEDAR CREEK					
PASCAGOULA RIVER	MSPA096R00_090	MSPASRM1	George	Fish Consumption	Not Attaining
LOCATION: NEAR BENNDALE FROM 6 MILES NORTH OF HWY 26 TO CONFLUENCE WITH BIG CREEK					
PASCAGOULA RIVER	MSPA096R00_065	MSPASRM1	Jackson	Fish Consumption	Not Attaining
LOCATION: FROM WADE BRIDGE TO CUMBEST BLUFF					
PASCAGOULA RIVER	MSPA096R00_070	MSPASRM1	Jackson	Fish Consumption	Not Attaining
LOCATION: NEAR WADE FROM CONFLUENCE WITH BIG CEDAR CREEK TO WADE BRIDGE					
PASCAGOULA RIVER	MSPA096R00_100	MSPASRM1	George	Fish Consumption	Not Attaining
LOCATION: NEAR MERRILL FROM HUC BOUNDARY, CONFLUENCE WITH CHICKASAWHAY AND LEAF RIVER TO 6 MILES NORTH OF HWY 26					

**PASCAGOULA RIVER**

<b>WATER BODY NAME</b>	<b>ASSESSMENT UNIT</b>	<b>§ 303(d)</b>	<b>COUNTY</b>	<b>USE</b>	<b>ASSESSMENT STATUS</b>
POPLAR CREEK	MSPA100R00_060	N/A	Forrest	Aquatic Life Support	Attaining
LOCATION: FROM HEADWATERS TO MOUTH AT BLACK CREEK					
POTTERCHITTO CREEK	MSPA057R00_040	N/A	Newton	Aquatic Life Support	Attaining
LOCATION: FROM CONFLUENCE WITH TARLOW CREEK TO CONFLUENCE WITH CHUNKY CREEK					
RED CREEK	MSPA102R00_020	N/A	Forrest, Pearl River, Stone	Aquatic Life Support	Attaining
LOCATION: NEAR WIGGINS FROM CONFLUENCE WITH HICKORY CREEK TO HWY 49					
RED CREEK	MSPA102R00_030	N/A	Lamar, Pearl River	Aquatic Life Support	Not Attaining, Biological Impairment
LOCATION: AT LUMBERTON FROM CONFLUENCE WITH DRY BRANCH TO CONFLUENCE WITH HICKORY CREEK					
RED CREEK	MSPA102R00_040	N/A	Lamar	Aquatic Life Support	Not Attaining, Biological Impairment
LOCATION: NEAR LUMBERTON FROM HEADWATER TO CONFLUENCE WITH DRY BRANCH					
RED CREEK	MSPA103R00_020	MS103RM	George, Stone	Aquatic Life Support Primary Contact (Recr)	Attaining Not Attaining, TMDL Completed
LOCATION: NEAR BEATRICE FROM WATERSHED BOUNDARY (102) TO CONFLUENCE WITH BLUFF CREEK					
RED CREEK	MSPA102R00_010	N/A	Stone	Aquatic Life Support	Attaining
LOCATION: NEAR WIGGINS FROM HWY 49 TO CONFLUENCE WITH FLINT CREEK					
RED CREEK	MSPA103R00_010	MS103RM	George, Jackson	Aquatic Life Support Primary Contact (Recr)	Attaining Not Attaining, TMDL Completed
LOCATION: AT VESTRY FROM CONFLUENCE WITH BLUFF CREEK AT RUBLE TO WATERSHED BOUNDARY (101)					

**PASCAGOULA RIVER**

<b>WATER BODY NAME</b>	<b>ASSESSMENT UNIT</b>	<b>§ 303(d)</b>	<b>COUNTY</b>	<b>USE</b>	<b>ASSESSMENT STATUS</b>
SHELTON CREEK	MSPA080R00_060	N/A	Covington, Jones	Aquatic Life Support	Attaining
LOCATION: FROM HEADWATERS TO MOUTH AT OKATOMA CREEK					
SKIFFER CREEK	MSPA081R00_030	N/A	Jefferson Davis, Simpson	Aquatic Life Support	Not Attaining, Biological Impairment
LOCATION: NEAR JAMESVILLE FROM HEADWATERS TO CONFLUENCE WITH BOWIE CREEK					
SOWASHEE CREEK	MSPA061R00_010	MS061	Lauderdale	Aquatic Life Support	Not Attaining, Biological Impairment
LOCATION: FROM MERIDIAN POTW OUTFALL TO CONFLUENCE WITH OKATIBBEE CREEK					
STATION CREEK	MSPA078R00_030	N/A	Covington	Aquatic Life Support	Attaining
LOCATION: FROM HEADWATERS TO MOUTH AT OAKY WOODS CREEK					
Sowashee Creek	MSPA061R00_020	MS061	Lauderdale	Aquatic Life Support	Not Attaining, Biological Impairment
LOCATION: FROM CONFLUENCE WITH NANABE CREEK TO MERIDIAN POTW OUTFALL					
TALLAHALA CREEK	MSPA087R00_020	MS087T	Jones	Aquatic Life Support	Not Attaining, Biological Impairment
LOCATION: AT LAUREL FROM MASONITE NORTH DISCHARGE TO LAUREL SOUTH POTW OUTFALL					
TALLAHALA CREEK	MSPA087R00_030	MS087T	Jones	Aquatic Life Support	Not Attaining, Biological Impairment
LOCATION: AT LAUREL FROM LAUREL EAST FACILITY TO MASONITE OUTFALL					
TALLAHALA CREEK	MSPA087R00_040	MS087T	Jones	Aquatic Life Support	Not Attaining, Biological Impairment
LOCATION: AT LAUREL FROM CONFLUENCE WITH BIG REEDY CREEK TO LAUREL EAST FACILITY					

**PASCAGOULA RIVER**

<b>WATER BODY NAME</b>	<b>ASSESSMENT UNIT</b>	<b>§ 303(d)</b>	<b>COUNTY</b>	<b>USE</b>	<b>ASSESSMENT STATUS</b>
TALLAHALA CREEK	MSPA089R00_010	N/A	Perry	Secondary Contact	Attaining
LOCATION: NEAR RUNNELSTOWN FROM CONFLUENCE WITH CHAPEL BRANCH TO MOUTH AT LEAF RIVER					
TALLAHALA CREEK	MSPA089R00_030	N/A	Jones	Secondary Contact	Attaining
LOCATION: AT ELLISVILLE FROM WATERSHED BOUNDARY (088) TO CONFLUENCE WITH BEAR					
TALLAHALA CREEK	MSPA089R00_025	N/A	Jones	Secondary Contact	Attaining
LOCATION: FROM THE CONFLUENCE WITH BEAR CREEK TO CONFLUENCE WITH WOODARD'S MILL CREEK					
TALLAHALA CREEK	MSPA087R00_065	N/A	Jasper, Jones	Aquatic Life Support	Attaining
LOCATION: TALLAHALA CREEK FROM CONFLUENCE WITH MCVAY CREEK TO CONFLUENCE WITH BIG REEDY CREEK					
TALLAHALA CREEK	MSPA087R00_070	N/A	Jasper	Aquatic Life Support	Attaining
LOCATION: NEAR MONTROSE FROM CONFLUENCE WITH THOMPSON CREEK TO CONFLUENCE WITH MCVAY CREEK					
TALLAHALA CREEK	MSPA089R00_020	N/A	Forrest, Jones, Perry	Secondary Contact	Attaining
LOCATION: NEAR RUNNELSTOWN FROM CONFLUENCE WITH WOODARD'S MILL CREEK TO CONFLUENCE WITH CHAPEL BRANCH					
TALLAHALA CREEK	MSPA087R00_010	MS087T	Jones	Aquatic Life Support	Not Attaining, Biological Impairment
LOCATION: AT LAUREL FROM LAUREL SOUTH POTW OUTFALL TO CONFLUENCE WITH TALLAHOMA CREEK					
TALLAHATTAH CREEK	MSPA087R00_050	N/A	Jasper	Aquatic Life Support	Attaining
LOCATION: NEAR HEIDELBERG FROM HEADWATERS TO CONFLUENCE WITH TALLAHALA CREEK					

**PASCAGOULA RIVER**

<b>WATER BODY NAME</b>	<b>ASSESSMENT UNIT</b>	<b>§ 303(d)</b>	<b>COUNTY</b>	<b>USE</b>	<b>ASSESSMENT STATUS</b>
TALLAHOMA CREEK	MSPA088R00_020	MS088T	Jones	Aquatic Life Support	Not Attaining, Biological Impairment
LOCATION: AT LAUREL FROM CONFLUENCE WITH TARAPIN CREEK TO CONFLUENCE WITH HORSE CREEK					
TALLAHOMA CREEK	MSPA088R00_010	MS088T	Jones	Aquatic Life Support	Not Attaining, Biological Impairment
LOCATION: AT ELLISVILLE FROM CONFLUENCE WITH HORSE CREEK TO CONFLUENCE WITH TALLAHALA CREEK AT WATERSHED BOUNDARY (089)					
TALLAHOMA CREEK	MSPA088R00_030	MS088T	Jasper, Jones	Aquatic Life Support	Not Attaining, Biological Impairment
LOCATION: NEAR LAUREL FROM CONFLUENCE WITH PINEY BRANCH TO CONFLUENCE WITH TARAPIN CREEK					
TEN MILE CREEK	MSPA102R00_070	N/A	Stone	Aquatic Life Support	Attaining
LOCATION: FROM HEADWATERS TO MOUTH AT RED CREEK					
THOMPSON CREEK	MSPA093R00_010	N/A	Perry	Aquatic Life Support	Attaining
LOCATION: NEAR RICHTON FROM CONFLUENCE WITH PINE CREEK TO CONFLUENCE WITH LEAF RIVER					
THOMPSON CREEK	MSPA093R00_030	MS093T2E	Wayne	Aquatic Life Support	Not Attaining, Biological Impairment
LOCATION: NEAR MULBERRY FROM CONFLUENCE WITH LITTLE THOMPSON CREEK TO CONFLUENCE WITH WEST LITTLE THOMPSON CREEK					
THOMPSON CREEK	MSPA093R00_020	MS093T2E	Perry, Wayne	Aquatic Life Support	Not Attaining, Biological Impairment
LOCATION: NEAR RICHTON FROM CONFLUENCE OF WEST LITTLE THOMPSON CREEK TO RICHTON POTW					
THOMPSON CREEK	MSPA093R00_040	MS093T2E	Wayne	Aquatic Life Support	Not Attaining, Biological Impairment
LOCATION: NEAR STRENGTHFORD FROM HEADWATERS TO CONFLUENCE WITH LITTLE THOMPSON CREEK					

**PASCAGOULA RIVER**

<b>WATER BODY NAME</b>	<b>ASSESSMENT UNIT</b>	<b>§ 303(d)</b>	<b>COUNTY</b>	<b>USE</b>	<b>ASSESSMENT STATUS</b>
UNNAMED TRIB. TO LEAF RIVER	MSPA090R00_050	MS090M2	Perry	Aquatic Life Support	Not Attaining, Biological Impairment
LOCATION: AT BEAUMONT FROM HOOD INDUSTRIES OUTFALL TO CONFLUENCE WITH LEAF RIVER					
UPPER LEAF RIVER	MSPA073R00_020	N/A	Smith	Aquatic Life Support	Attaining
LOCATION: NEAR SYLVARENA FROM CONFLUENCE WITH ICHUSA CREEK TO WATERSHED BOUNDARY (075)					
UPPER LEAF RIVER	MSPA073R00_010	N/A	Smith	Aquatic Life Support	Attaining
LOCATION: NEAR OTHO FROM CONFLUENCE WITH TALLABOGUE CREEK TO CONFLUENCE WITH ICHUSA CREEK					
UPPER LEAF RIVER	MSPA073R00_005	MS073UE	Scott, Smith	Aquatic Life Support	Not Attaining, Biological Impairment
LOCATION: UPPER LEAF RIVER FROM HEADWATERS TO TALLABOGUE CR.					
UPPER SOUINLOVEY CREEK	MSPA062R00_020	N/A	Clarke, Jasper	Aquatic Life Support	Attaining
LOCATION: NEAR ROSE HILL FROM HEADWATERS TO I-59					
WEST BOWIE CREEK	MSPA083R00_020	N/A	Jefferson Davis	Secondary Contact	Attaining
LOCATION: NEAR BASSFIELD FROM HEADWATERS TO CONFLUENCE WITH BOWIE CREEK					
WEST LITTLE THOMPSON CREEK	MSPA093R00_050	MS093T1E	Wayne	Aquatic Life Support	Not Attaining, Biological Impairment
LOCATION: NEAR MULBERRY FROM HEADWATERS TO MOUTH OF THOMPSON CREEK					
WEST PASCAGOULA RIVER	MSPA098R00_020	MSWPASRM2	Jackson	Fish Consumption	Not Attaining
LOCATION: AT GAUTIER FROM CONFLUENCE WITH BLUFF CREEK TO CONFLUENCE WITH SIOUX CREEK					

**PASCAGOULA RIVER**

<b>WATER BODY NAME</b>	<b>ASSESSMENT UNIT</b>	<b>§ 303(d)</b>	<b>COUNTY</b>	<b>USE</b>	<b>ASSESSMENT STATUS</b>
WEST PASCAGOULA RIVER	MSPA098R00_030	MSWPASRM1	Jackson	Fish Consumption	Not Attaining
LOCATION: NEAR GAUTIER FROM CONFLUENCE WITH EAST PASCAGOULA RIVER TO CONFLUENCE WITH BLUFF CREEK					
WEST PASCAGOULA RIVER	MSPA098R00_010	MSWPASRM2	Jackson	Fish Consumption	Not Attaining
LOCATION: AT GAUTIER FROM CONFLUENCE WITH SIOUX BAYOU TO MOUTH AT MS SOUND					
WEST TALLAHALA CREEK	MSPA074R00_020	MS074M2	Jasper, Smith	Aquatic Life Support	Not Attaining, Biological Impairment
LOCATION: NEAR LOUIN FROM CONFLUENCE WITH QUARTERLIAH CREEK TO WATERSHED BOUNDARY (075)					
WEST TALLAHALA CREEK	MSPA074R00_025	MS074M2	Smith	Aquatic Life Support	Not Attaining, Biological Impairment
LOCATION: FROM CONFLUENCE WITH PRAIRIE CREEK TO CONFLUENCE WITH BEAVERDAM CREEK AT LEAF RIVER					
WEST TALLAHALA CREEK	MSPA074R00_010	MS074M2	Jasper, Newton, Smith	Aquatic Life Support	Not Attaining, Biological Impairment
LOCATION: NEAR LAKE FROM HEADWATERS TO CONFLUENCE WITH QUARTERLIAH CREEK					
WHISKEY CREEK	MSPA097R00_010	MS097E	George, Perry	Aquatic Life Support	Not Attaining, Biological Impairment
LOCATION: NEAR TAYLOR HILL FROM HEADWATERS TO CONFLUENCE WITH PASCAGOULA RIVER					
YELLOW CREEK	MSPA065R00_200	N/A	Wayne	Aquatic Life Support	Attaining
LOCATION: FROM HEADWATERS TO CONFLUENCE WITH CHICKASAWHAY RIVER					