

Weekly Construction Progress Report**IB & Tanks Decommissioning Project****Period:** Week Ending 8/16/2015**Hercules Plant****Hattiesburg, MS****Project Work Performed:**

- CHES continued the monitoring of the solar area ray monitors for source and exhaust COC levels.
- CHES continued to dewater the IB using a "caged sump" within the IB. Water was transferred from the IB to tank ET-19 and then treated through the CHES system (filters, carbon). Treated water is stored in frac tanks pending analysis.
- CHES loaded rolloff boxes with stabilized material from Cell #1. Boxes were staged and shipped for disposal.
- CHES continued to work material in Cell #4, #5, #6, and #8 for stabilization purposes.

Work Projected Next Week:

- Continue dewatering of IB and treatment of water
- Continue to haul 2 to 4 loads per day of stabilized Cell #1 and #2 material to CHES facilities in Deer Park and Kimball.
- Complete hauling material from Cell #4 to Pine Belt Landfill.
- Continue stabilization of sludge in Cells #5, #6, and #8. Collect samples of material as appropriate.

Action Items:

- Identify appropriate disposition facility for material from Cell #3 based on analytical data.

Solids Production:

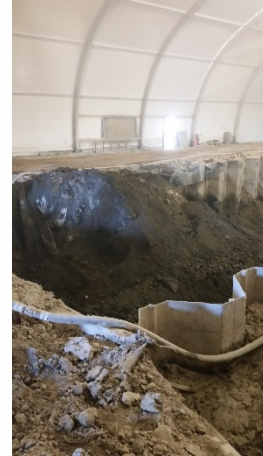
- CHES continued hauling Cell #1 material to their facilities in Deer Park and/or Kimball and began hauling Cell #4 material to Pine Belt Landfill.
 - 8/10 – 3 loads totaling 50.08 tons to Deer Park
 - 8/11 – 2 loads totaling 33.32 tons to Deer Park
 - 8/12 – 2 loads totaling 33.43 tons to Deer Park, 9 loads totaling 185.51 tons to Pine Belt
 - 8/13 – 2 loads totaling 28.44 tons to Deer Park, 14 loads totaling 302.88 tons to Pine Belt
 - 8/14 – 1 load totaling 17.24 tons to Deer Park, 1 load totaling 15.25 tons to Kimball, 6 loads totaling 110.55 tons to Pine Belt
 - 8/15 – 1 load totaling 16.49 tons to Kimball
- Mixed sludge within Cell #5 using approximately 17 tons of LKD.
- Mixed sludge within Cell #6 using approximately 35 tons of LKD
- Mixed sludge within Cell #8 using approximately 7 tons of LKD

Water Production:

- Water was decanted from the IB to ET-19. All water was then processed through on site treatment and stored in on-site frac tanks pending analysis.
 - 8/11 – Batch 20 was treated and stored in frac tanks pending analysis
- Water was discharged to the POTW in accordance with the permissible loading rates of the facilities discharge permit based on laboratory analytical results
 - 8/10 – Discharged 17,400 gallons of water (Batch 19) from the frac tanks to the POTW

Air/Odor Monitoring

- Perimeter air monitoring was performed throughout the remainder of the week. No exceedances were noted as a result of on site activities.

**Cell #1 material staged for loading****Cell #4 material****Shipping of rolloff boxes to Deer Park**