



The mission of the Mississippi Department of Environmental Quality is to safeguard the health, safety, and welfare of present and future generations of Mississippians by conserving and improving our environment and fostering wise economic growth through focused research and responsible regulation.

INSIDE THIS ISSUE:

enHance	I
Nunnelee Bldg	8
Staff Changes	9
SEP Approved	11
KMB Awards	13
Adopt-A-Stream	14
Natchez Trace Geology	16

Mississippi Department of Environmental Quality Environmental News

VOL. 14 ISSUE 4

APRIL 2017

MDEQ Recognizes 2017 enHance Members

The Mississippi Department of Environmental Quality (MDEQ) accepted five new members and ten renewal memberships into its enHance program for the 2017 class on April 20. The recognition was part of the annual workshop and awards luncheon held in Jackson.

enHance is a voluntary stewardship program begun in 2009 that recognizes committed environmental leaders who accomplish goals beyond their legal requirements. enHance is open to facilities, cities, counties, and other entities who are interested in the program, and applicants can choose from three tiers: Leader, Steward, or Associate.



New members for 2017:

LEADER

Advanced Distributor Products (Grenada)

STEWARD

Eaton Corporation (Jackson)

Omega Motion (Saltillo)

ASSOCIATE

CrestFoam (Houston)

Georgia Pacific Wood Products (Taylorsville)

Renewing members for 2017:

LEADER

The Cooper Tire Company (Tupelo)
Flexsteel (Starkville)
Nissan North America, Inc. (Canton)
Toyota Motor Manufacturing (Blue Springs)
Tupelo Sleeper – Leggett & Platt (Tupelo)

STEWARD

The Cooper Tire Company (Clarksdale)
Naval Construction Battalion Center (Gulfport)
City of Ridgeland
Northrop Grumman Mission Systems (Ocean Springs)

ASSOCIATE

Choctaw Generation Limited Partnership (Ackerman)

Membership is voluntary, and applications for membership may be submitted each year from July 1 through September 30. More information about the program is available at www.enhance.ms.



enHance Leaders

MDEQ Executive Director Gary Rikard presented the enHance awards.

Top: Chris Taylor, Advanced Distributor Products.

Middle: Albert McShan, Cooper Tire Company—Tupelo.

Bottom: Roy Pollard, Flexsteel.



Top: Jason Redd, Nissan.

Middle: John Raymer and Rosario Martinez, Toyota.

Bottom: Robert Keltz, Tupelo Sleeper—
Leggett & Platt.



enHance Stewards

Top: Albert McShan,
Cooper Tire Company-
Clarksdale.

Middle: Tereance
Elmore and Brittany
Jackson, Eaton Corpo-
ration.

Bottom: Matt Schultz
and Lisa Noble, Naval
Construction Battalion
Center.



Top: Frank Brooks,
Omega Motion.

Bottom: Mike
McCollum and Sandra
Monohan, City of
Ridgeland.



enHance Associates

Top: Austin Norton,
Choctaw Generation.

Middle: Michael Hai-
ley, CrestFoam.

Bottom: William
James, Georgia Pacific
Wood Products.



MDEQ Building to be Named for Alan Nunnelee

On April 11, Governor Phil Bryant signed the bill passed by the Mississippi Legislature this year to rename the MDEQ building on East Amite Street in Jackson after former Congressman Alan Nunnelee. Alan Nunnelee represented the citizens of Mississippi's First Congressional District from 2011 until his passing in 2015. He served on the House Appropriations Committee and the Agriculture, Energy and Water and Military Construction and Veterans Affairs Subcommittees.

Before joining the 112th Congress, Nunnelee represented Lee and Pontotoc counties in the Mississippi State Senate from 1995 to 2010. He served as chairman of the Appropriations Committee, the Public Health Committee, and the Environment Protection, Conservation and Water Resources Committee.



Staff Changes

Valerie Alley

Valerie Alley has been selected as Natural Resource Damage Assessment (NRDA) Coordinator in the Office of Restoration as part of the Program Compliance Division. Valerie has worked at MDEQ since 2004, most recently in the Office of Pollution Control's Field Services Division overseeing the Water Quality Assessment Program. The Office of Restoration is responsible for planning and implementing ecological and economic restoration projects on the Mississippi Gulf Coast following the *Deepwater Horizon* oil spill in 2010. The funding programs within Restoration are a result of civil and criminal charges filed against BP, and the NRDA Program focuses on the actual damages to Mississippi's natural resources. The Office of Restoration works with many partners across the state, including sister agencies, federal agencies and non-profit organizations, to ensure that these restoration projects provide a lasting and valuable impact on Mississippi's coastal landscape.

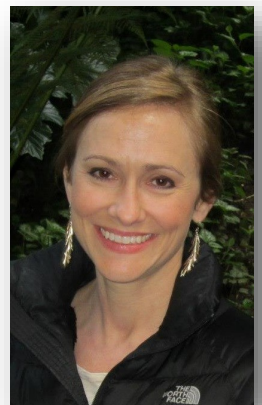


"I am pleased to be able to bring my experience to the NRDA Program within the Office of Restoration and look forward to the opportunity to participate in the restoration of Mississippi's valuable coastal ecosystems and resources," said Alley.

She is a native of Russellville, Alabama, and earned a B.S. in Biology at the University of North Alabama and an M.S. in Biology from the University of Louisiana–Monroe. She lives in Rankin County with her husband and two daughters.

Melissa Fortenberry

Melissa Fortenberry was recently selected as the Chief of the Air Toxics New Standards Branch of the Air Division replacing BJ Hailey, who retired on January 31. The Branch is responsible for the implementation of new standards such as MACT and GACT NESHAPs and 111(d) standards, Mississippi's Air Toxics Monitoring Program, and ensuring compliance with EPA's Risk Management Program. Melissa has worked at MDEQ for 18 years, with all of her years of service being in the Air Division. She will also continue her duties as the Interim Chief of the Air Support Branch until further notice.



"I have truly enjoyed working in the Air Division for the last 18 years. Protecting the state's air resource while serving the general public and the regulated community has been very rewarding. I'm excited to continue my service in this new role," said Fortenberry.

Melissa has been with MDEQ since 1999. She was born and raised in Brandon, Mississippi, and graduated from Northwest Rankin High School. She earned a B.S. in Chemical Engineering at Mississippi State University and an M.S. in Environmental Engineering from the University of Mississippi. She is also a registered Professional Engineer.

Trent Jones

Trent Jones was recently selected as the Manager of the Solid Waste Permitting and Certification Branch of the Waste Division. Trent has worked at MDEQ in solid waste management program areas for just over 16 years, most recently serving as the state's waste tire program administrator and solid waste annual reporting coordinator. He previously served as an engineer in the Solid Waste Policy, Planning and Grants Branch.



The Permitting and Certification Branch is responsible for administering the state's solid waste permitting programs and related regulatory activities for all solid waste management facilities statewide including landfills, rubbish sites, transfer stations, land application facilities, processing facilities, composting facilities, and other types of solid waste management activities. The group also manages the state's operator certification programs for landfill and Class I rubbish site operators, provides guidance and training to local solid waste enforcement officers, and oversees the waste tire hauler certification program.

"I look forward to continuing to serve the State of Mississippi and working with professional staff to provide guidance and assistance to citizens and the regulated community for the proper management, reuse, or disposal of solid waste while protecting human health and the environment," said Jones.

Trent is a native of Meridian, Mississippi, and earned a B.S. in Chemical Engineering at Mississippi State University. He is a registered Professional Engineer and is also a Board Certified Environmental Engineer in Solid Waste Management. He lives near Madison with his daughters Abigail and Chloe.



Mississippi's RESTORE Act State Expenditure Plan Approved

MDEQ announced on April 19 that Mississippi's initial State Expenditure Plan (SEP) has been approved by the Gulf Coast Ecosystem Restoration Council (RESTORE Council). The \$49.8 million plan describes projects and programs which Mississippi will fund under RESTORE Act.

The projects and programs identified for funding in this plan include: the Mississippi Gulf Coast Water Quality Improvement Program (\$45 million), Pascagoula Oyster Reef Complex Relay and Enhancement (\$3.5 million), and Compatibility, Coordination, and Restoration Planning (\$1.3 million).

"Mississippi has developed a SEP that effectively addresses the requirements set forth in the RESTORE Act, Treasury regulations and SEP Guidelines. We look forward to working with Mississippi to help ensure an efficient grants process for the activities approved in the SEP," said Ben Scaggs, Acting Executive Director, RESTORE Council.

"The RESTORE Council's approval of this plan is another important step in Mississippi's comprehensive restoration efforts. The plan focuses on improving water quality and marine ecosystems, and these goals were established based on public input during the plan development process," said Marc Wyatt, Director of the MDEQ Office of Restoration.

The RESTORE Act makes available 80 percent of the Clean Water Act civil and administrative penalties paid by the responsible parties for the *Deepwater Horizon* oil spill. The Oil Spill Impact Component, also referred to as Bucket 3, accounts for 30 percent of the funds available in the Gulf Coast Restoration Trust Fund. The State of Mississippi, as determined by the RESTORE Act, will receive 19.07 percent of the 30 percent allocation of the Oil Spill Impact Component. The RESTORE Act required Mississippi, through MDEQ, to prepare a State Expenditure Plan describing each activity, project, or program for which Mississippi seeks funding under Bucket 3.

As part of the grant process, all activities for which funding is sought will be carefully reviewed to ensure consistency with the approved SEP, and compliance with the RESTORE Act and all other applicable requirements. Funding for implementation activities is disbursed to the state after verification of compliance with all applicable federal environmental and other laws. Funding for planning activities in the SEP will be disbursed after verification of a direct relationship to the Spill Impact Component.

[Click here](#) for project details and to view the Mississippi State Expenditure Plan.

MDEQ and MDMR Warn Boaters Away from Round Island Marsh Restoration Project

Photo of the Round Island project from February 2017.

MDEQ and the Mississippi Department of Marine Resources (MDMR) issued a warning recently to boaters to stay clear of the Round Island Marsh Restoration construction project near Pascagoula due to loose materials that could be very dangerous.

A sand berm was created and filled with dredge spoils from the Pascagoula Channel as the initial step in creating a new marsh habitat for the Mississippi Coast. The majority of the material in the area is very loose, and although there are areas that appear to be solid surfaces, it is where the top material is crusted over and remains very dangerous underneath. All of the area inside of the berm can be very dangerous and is not intended for public use at this time. Round Island remains an active construction site and is posted as such (Danger – Construction Area – Keep Out). Until the material inside of the berm dries out and can hold the weight of a person, public access to the island is off limits.

The \$8 million sand berm is being funded as part of the \$21 million project from Round Two of the National Fish and Wildlife Foundation's (NFWF) Gulf Environmental Benefit Fund awarded to Mississippi and announced by Governor Phil Bryant in November of 2014. NFWF's Gulf Environmental Benefit Fund was created as part of the settlement between the U.S. Department of Justice, BP, and Transocean to resolve certain criminal charges against both companies in relation to the spill.



MDEQ's Williams and Regional Recycling Grants Program Honored by Keep Mississippi Beautiful

Top: Godwin Award presented to Mark Williams (center). Also pictured, Neely Norman, Assistant Director of KMB (left) and Stephanie Hutchins, KMB Board Chair (right).

Bottom: Stephanie Hutchins presents state government award to MDEQ's Jennifer Milner and Mark Williams.

Mark Williams, Chief of MDEQ's Waste Division, was recently awarded the Keep Mississippi Beautiful (KMB) Louise Godwin Award at the organization's annual awards luncheon. This award, named after one of the founders of KMB, is their highest honor which distinguishes "a veteran leader of beautification, recycling and litter cleanup in Mississippi." Mark has served the agency in various roles in the areas of waste reduction, recycling, and solid waste management over his career at MDEQ. In addition, he serves on the Boards of Directors for Keep Mississippi Beautiful, the Mississippi Recycling Coalition, and the Southeast Recycling Development Council.

MDEQ's Regional Recycling Cooperative Grants Program was also recognized by Keep Mississippi Beautiful as the second place winner of the Annual Organization Award in the State Government category. The Regional Recycling Cooperative Grants Program provides funding support to regional recycling cooperative efforts by local governments to help expand and improve recycling services.



Adopt-A-Stream Workshop

MDEQ and The Mississippi Wildlife Federation will host an Adopt-A-Stream workshop at George P. Cossar State Park near Enid on June 13 to 14.

Adopt-A-Stream is a program that promotes environmental stewardship through training workshops, outdoor field activities, and by introducing participants to watershed action projects.

The two-day program provides an in-depth study of watersheds, as well as hands-on training in chemical and biological parameters important to a healthy stream. In addition, the workshop will:

- Increase awareness of nonpoint source pollution
- Introduce surveying and mapping of a watershed
- Increase watershed protection awareness and possible action that can be taken to help a watershed with ideas about projects such as:
 - Storm drain marking
 - Stream clean-ups
 - Recycling
 - Advocacy

Who Should Participate?

Educators, land managers, advocacy groups, Scout troop leaders, Envirothon Team advisors, watershed team leaders, environmental educators, and concerned citizens. For teachers, two Continuing Education Units are available.

Registration Information

Registration is available at www.mswildlife.org/AAS/ or contact Debra Veeder, Adopt-A-Stream Coordinator, at (601) 605-1790 and dveeder@mswf.org.





National Prescription Drug Take-Back Day

The next Prescription Drug Take-Back Day sponsored by the U.S. Drug Enforcement Administration will be April 29, 2017, nationwide, from 10 a.m. to 2 p.m.

Use this website beginning April 1 to find local collection sites:

http://www.deadiversion.usdoj.gov/drug_disposal/takeback/index.html.

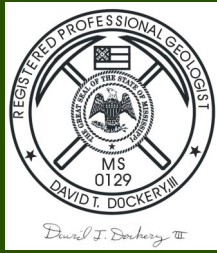
The National Prescription Drug Take-Back Day provides a safe, convenient, and responsible means of disposing of prescription drugs while also educating the general public about the potential for abuse of medications. In addition, taking advantage of this opportunity keeps prescription medication out of the household waste stream and from being flushed down toilets.



**BE RESPONSIBLE.
DON'T FLUSH YOUR MEDS.**



Collection event in Long Beach, California, from *The Signal Tribune*.



Mapping the Geology of the Natchez Trace Parkway

David T. Dockery III, RPG, and R. Tyler Berry, RPG, Office of Geology

The Program Manager of the Geologic Resources Division for the National Park Service (NPS), Bruce Heise, is approaching retirement this year. Nearing the end of his tenure, the geology of all of the nation's 270 National Parks have been, or are in the process of being mapped, excluding just two. Both of the two excluded are in Mississippi: the Vicksburg National Military Park (VNMP) and the Natchez Trace Parkway (NATR). Recently MDEQ's Office of Geology, Mississippi State University, and the NPS discussed a cooperative effort to map the geology of the 7.5-minute quadrangle maps that cover the Trace right-of-way (Figure 1). Three of these quadrangles near Kosciusko, Mississippi, will be mapped in the upcoming 2018 Fiscal Year.



Figure 1. Meeting with the National Park Service at MDEQ's 700 Building to discuss a cooperative effort to map the geology of the Natchez Trace Parkway at a scale of 1:24,000. At front table is Tyler Berry, MDEQ Office of Geology (OG). At second table, from left to right, are Dan Irvin of the Geological Survey of Alabama, Bruce Heise of the National Park Service (NPS), Dr. Lisa McNinnis of NPS, Deanna Boensch of NPS, and Martha Segura of NPS. At third table, left to right, are Darrel Schmitz of Mississippi State University and Dan Morse (OG).

Following the meeting, a geological field trip was held down the Trace from the Interstate 20 intersection at Clinton to Natchez. The first stop was a "Wildlife Crossing" for the rare Webster's Salamander, which inhabits karst spaces in the Glendon Limestone (Figure 2). The second stop was at Rocky Springs to see the rocky ledges of sandstone in the Catahoula Formation, which formed the base for a perched water table at the town's original spring site (Figure 3).



Figure 2. Glendon Limestone on Lindsey Creek on the east side of the Natchez Trace Parkway and just south of Interstate 20 in Hinds County, Mississippi. Left to right, Bruce Heise (GRD), Tyler Berry (MOG), Dr. Lisa McInnis (NATR), Sara Strickland (VICK), Paul Parrish (MOG), Andrew Newcomb (MOG), and Dr. Darrel Schmitz (MSU). Picture taken on March 23, 2017.



Figure 3. Bruce Heise (left) and Tyler Berry looking at ledges of Catahoula sandstone which formed the floor of a perched water table and spring for the Rocky Springs townsite. Picture taken on March 23, 2017.

Figure 4 shows the status of geologic mapping work for 7.5-minute quadrangles along the southern half of the Trace in Mississippi. Maps published, or soon to be published, as Open File Reports are color-coded in olive green and are/will be available online (<http://bit.ly/2pg64cN>). A cluster of seven maps is published in the Claiborne County area with the Carlisle Quadrangle being in the center. North of the Jackson area are eleven geologic maps coded in olive green; the first three are scheduled for 2018 and the others are available online.

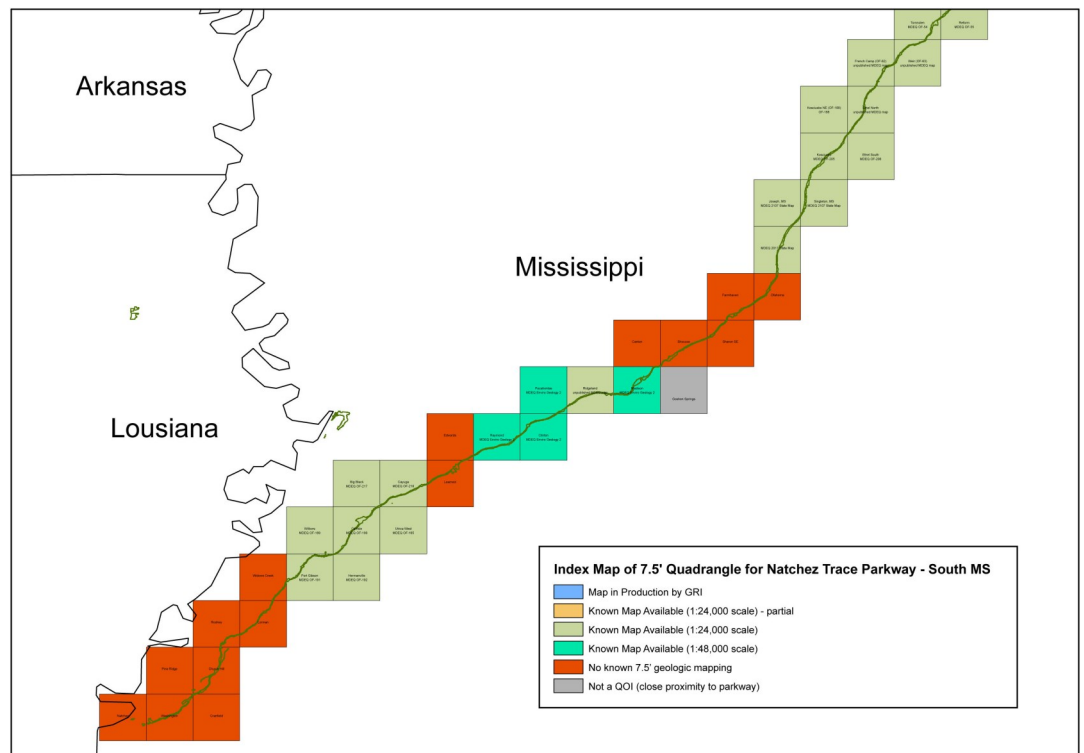


Figure 4. 7.5-minute quadrangle map coverage of the Natchez Trace Parkway in southern and central Mississippi. Olive green colored maps are completed or in progress.

Figure 5 shows the borders of Rocky Springs site on the Carlisle Geological Quadrangle map with the addition of shaded relief. This relief shows the rugged terrain of bedrock strata in the Catahoula Formation above flat alluvial deposits. At higher elevations above the Catahoula are the Hattiesburg Formation and pre-loess terrace deposits. Figure 6 shows the status of geologic maps in northeastern Mississippi, most of which are in progress at some stage or are published. In the southern range of these quadrangles is the Jeff Busby site (Tomnolen Quadrangle, Figure 7) with a scenic view to the east from Little Mountain at the edge of a Wilcox Group cuesta, a ridge developed on the basal sands of the Tusahoma Formation overlying clay-rich sediments in the Grampian Hills Member of the Nanafalia Formation. Figure 8 shows the view from Little Mountain as taken in July of 1973.

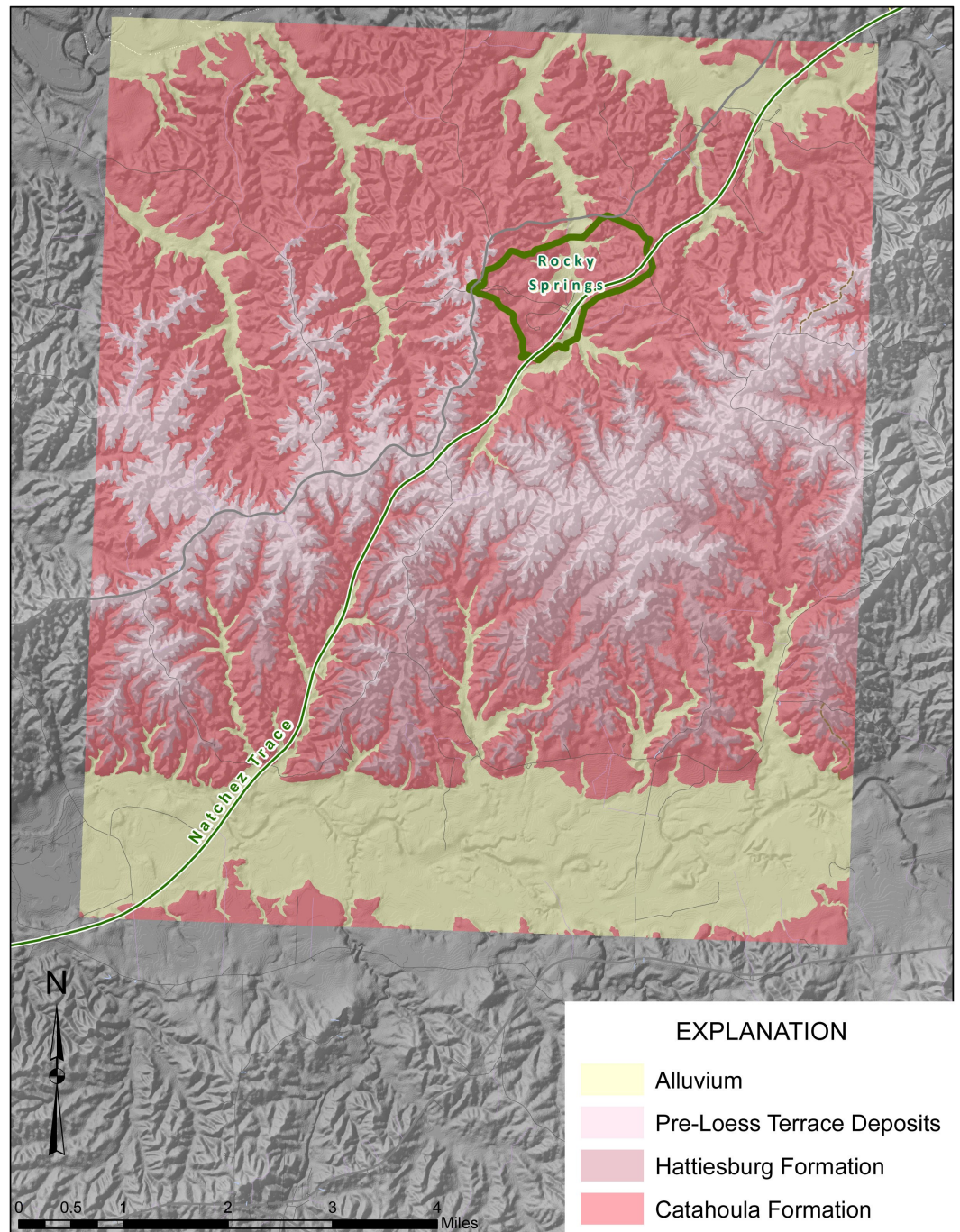


Figure 5. Rocky Springs site on the Natchez Trace Parkway as shown on the Carlisle Geological Quadrangle map (color portion of shaded relief map), Mississippi Office of Geology, Open File Report 190, by Starnes and Davis, 2004.

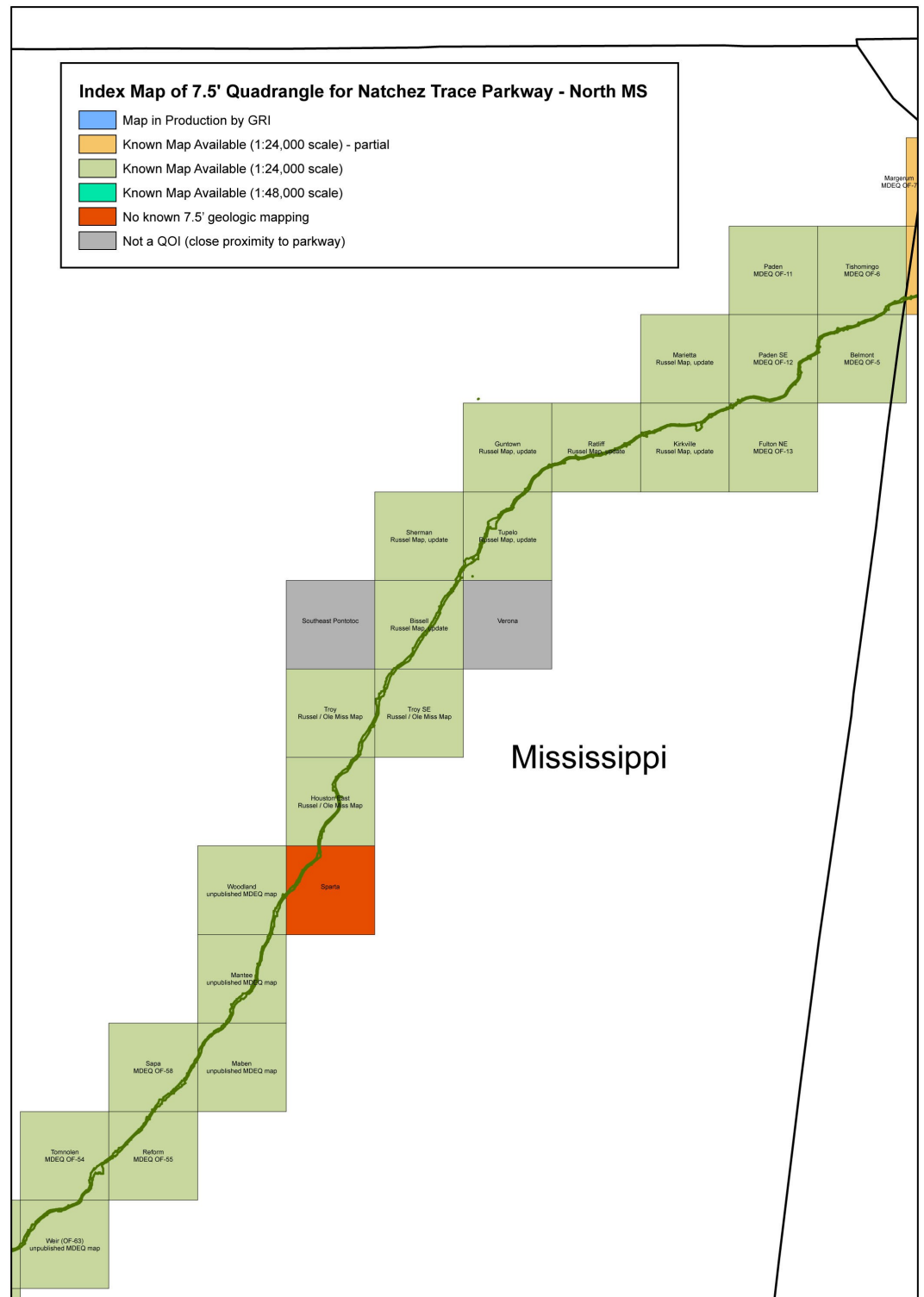


Figure 6. 7.5-minute quadrangle coverage of the Natchez Trace Parkway in northeastern Mississippi. The Jeff Busby site is in the Tomnolen Quadrangle on the western side of the second tier of quadrangles from the southern edge.

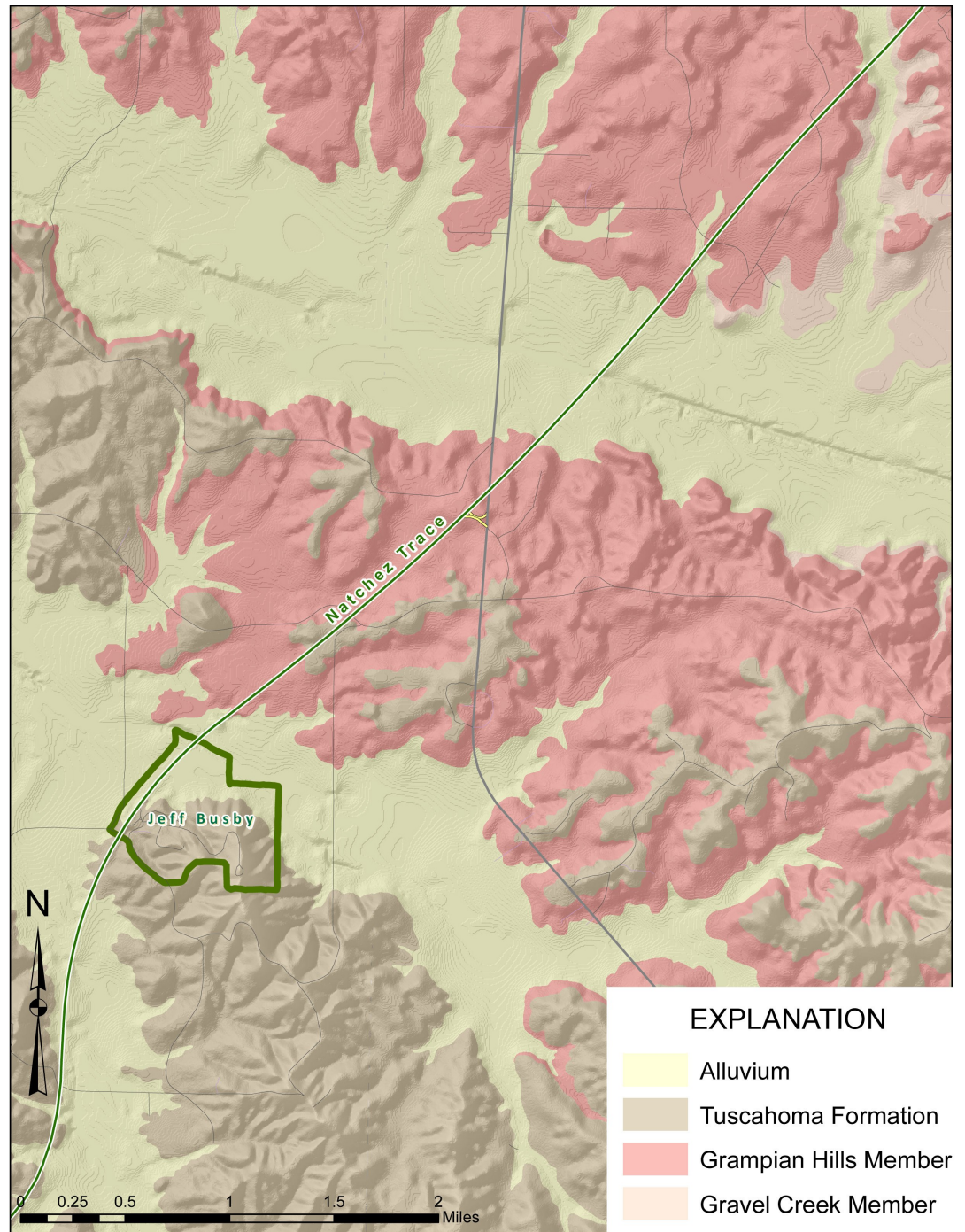


Figure 7. Jeff Busby site in the Tomnolen Geological Quadrangle map, Mississippi Office of Geology, Open File Report 54, by David Thompson, 1998, with shaded relief added. Little Mountain overlook is in the southeastern part of the park on the lower Tuscaloosa Formation.



Figure 8. Little Mountain overlook (looking east) at the Jeff Busby site along the Natchez Trace Parkway. Picture was taken in July of 1973.

The National Park Service meetings in Mississippi successfully accomplished the goal of developing a plan to complete a geologic map product for VNMP and NATR.





MDEQ Environmental Action Links

- Draft permits currently at public notice, <http://opc.deq.state.ms.us/publicnotice.aspx>
- Environmental Permits Division Scheduled Public Hearings, <http://opc.deq.state.ms.us/publichearingheader.aspx>
- Geology Permit Application Public Notice, http://opc.deq.state.ms.us/geology_public_notice.aspx
- Permits and certificates issued in the last 90 days, http://opc.deq.state.ms.us/report_permits.aspx
- General permit coverages issued in the last 90 days, http://opc.deq.state.ms.us/report_gnp_issued.aspx
- Notices of Intent for coverage under a Statewide General permit received by the Environmental Permits Division, http://opc.deq.state.ms.us/report_gnp_notice.aspx
- List of the 401 Water Quality Certifications currently at public notice, http://opc.deq.state.ms.us/report_wqc_public_notice.aspx
- List of the compliance inspections recently conducted, http://opc.deq.state.ms.us/report_eced_tasks.aspx
- Orders issued by the Mississippi Commission on Environmental Quality, http://opc.deq.state.ms.us/report_orders.aspx

Connect with MDEQ



Mississippi Department of Environmental
Quality

Post Office Box 2261

Jackson, Mississippi 39225

601-961-5171

www.deq.state.ms.us



Picture of the Month

Orange Foliose Bark
Lichen (*Teloschistes
exiles*) found in
Claiborne County,
Mississippi. Photo
by James Starnes,
Office of Geology.

