



MISSISSIPPI DEPARTMENT OF ENVIRONMENTAL QUALITY

FACT SHEET

Moose Lodge Road Disposal Site and Moose Lodge Road Area Grenada, Mississippi

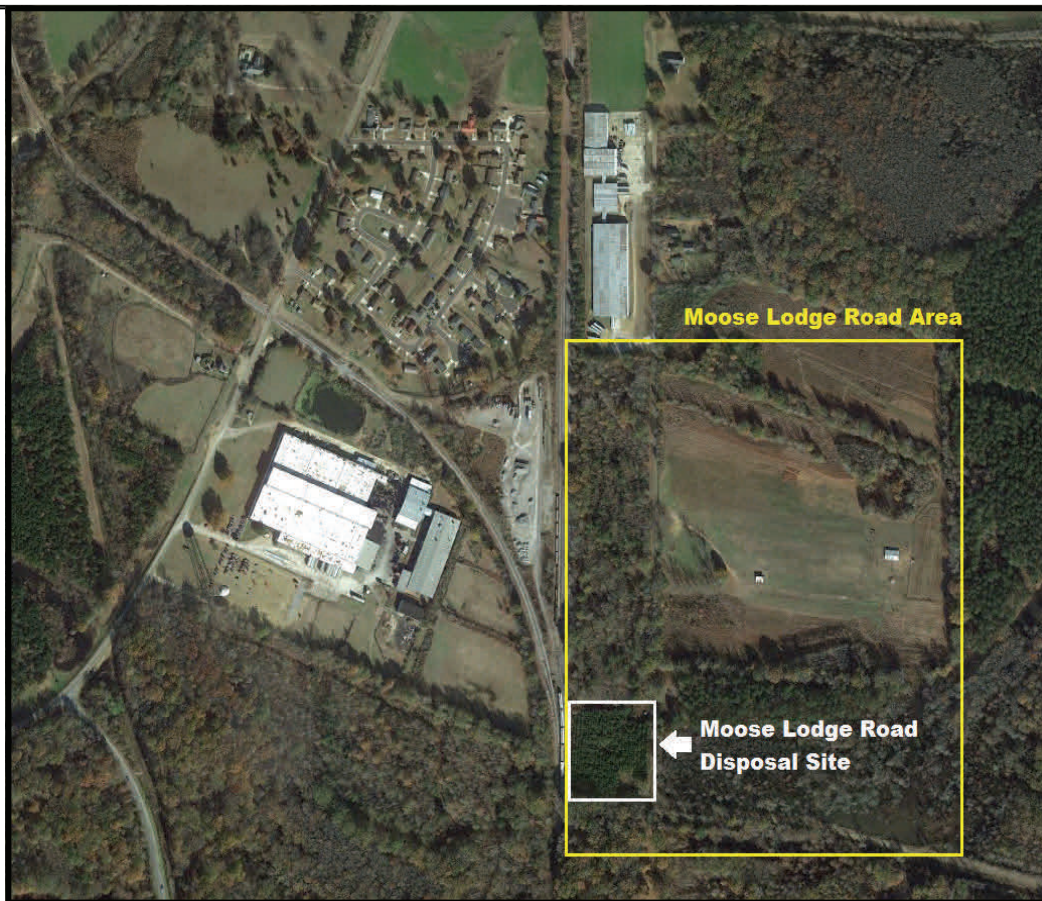
January 2016

INTRODUCTION

The purpose of this Fact Sheet is to provide information related to the Rockwell Moose Lodge Road Disposal Site, the investigations in the Moose Lodge Road Area, and the current status of those investigations.

HISTORY

The Moose Lodge Road Disposal Site was first brought to the attention of MDEQ in 1993. According to company records, the Facility used the site to dispose of a buffing compound containing chlorinated solvents used to polish the wheel covers produced in the stamping operation in the 1960s. The Moose Lodge Road Disposal Site shown above is approximately 2.8 acres.



Beginning in 1993, MDEQ required Rockwell International to determine the extent of the dumping of the compound material and to define the impacts to groundwater underneath and next to the disposal site. Through investigations conducted in 1994 and 1995, the extent of contamination in soils and groundwater at the Moose Lodge Road Disposal Site itself, and to its east was defined. In 1996, Rockwell International began testing a method of “In-situ Oxidation” to evaluate the effectiveness of the method for groundwater cleanup. After satisfactory test results, a mixture was injected into the groundwater to assist in the degradation of the chlorinated solvents. Following the injections, MDEQ required Rockwell International to perform groundwater monitoring in the vicinity of the Disposal Area to measure in the degradation of the chlorinated solvents. In 1998 Rockwell was reorganized as Arvin Meritor, which continued as the responsible party for the site. After monitoring groundwater for several years, MDEQ and Meritor agreed that removal of the buffing compound material was the most effective action to eliminate this probable source of groundwater contamination.

In 2006, 7,243 tons of buffering compound and soil and 71 tons of tree root debris were excavated and transported off-site for disposal at a permitted facility. Following review and approval of the work that had been conducted, MDEQ issued a “No Further Action” determination in 2007 for the soils at the Moose Lodge Road Disposal Site.

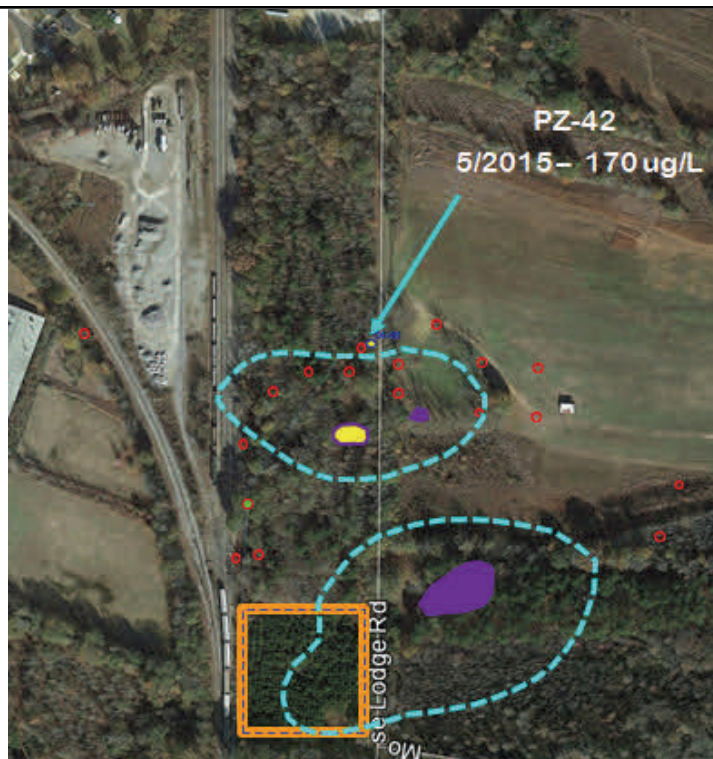
Groundwater Impacts

After the soils were addressed in 2007, the focus turned back to two areas that continued to show residual groundwater impacts. A plan was submitted and approved by MDEQ in May 2007. After access issues were resolved and flooding in the area subsided, monitoring wells for those two areas were installed in 2008. Groundwater treatment by means of oxidant injection began in November 2009. During the monitoring of the groundwater following the treatment, a decision was made to switch to a more effective oxidant formula, which was approved by MDEQ in January 2012. The new formula was injected following the approval. From that point moving forward, Arvin Meritor monitored the two areas showing groundwater impacts as the trends continued to show that the levels were either stable or decreasing.

Moose Lodge Road Area Investigation Expands in 2015

Groundwater samples collected in May 2015 and submitted to MDEQ for review in August 2015 indicated an increase in levels of TCE at a monitoring location called PZ-42 as shown in the figure to the right. Since this well had not previously shown significant contamination, and since MDEQ learned that contamination had been observed to the northwest of PZ-42, MDEQ requested further assessment to the north of the Moose Lodge Road Disposal Site. This expanded area of investigation is now referred to as the Moose Lodge Road Area as shown on Page 1.

Beginning in July 2015, EPA and MDEQ began coordinating efforts as EPA began directing assessment efforts to the north and northeast of Grenada Manufacturing, LLC from the plant site. During this time, MDEQ has directed environmental assessment activities including soil classifications, soil and groundwa-



This figure shows the two areas of groundwater impacts which continued to be monitored after the soil removal activities in 2007.

ter sampling within the Moose Lodge Road Area as Arvin Meritor continues to investigate for additional potential source areas.

MDEQ-EPA Collaboration

By combining the assessments efforts required by EPA and those required by MDEQ, both agencies look forward to evaluating the entire area. Once done, remedial actions can be implemented to address the concerns in the area.

MDEQ INFORMATION

MDEQ efforts at the Moose Lodge Road Disposal Site and the Moose Lodge Road Area are directed by a team of environmental professionals in the Groundwater Assessment and Remediation Division (GARD) Voluntary Evaluation Program. More information on this division is available on the MDEQ website.

MDEQ website:
<http://www.deq.state.ms.us>

FOR MORE INFORMATION:

MDEQ, P.O. Box 2261, Jackson, MS 39225

Melissa McGee-Collier, Office of Community Engagement, (601) 961-5025 or Melissa_Collier@deq.state.ms.us