

ADOPTED
June 2012



MISSISSIPPI
2012 SECTION
303(D)
LIST OF IMPAIRED
WATER BODIES

FINAL LIST ADOPTED AND APPROVED

Prepared by
MISSISSIPPI DEPARTMENT OF ENVIRONMENTAL QUALITY
SURFACE WATER DIVISION OF THE OFFICE OF POLLUTION CONTROL

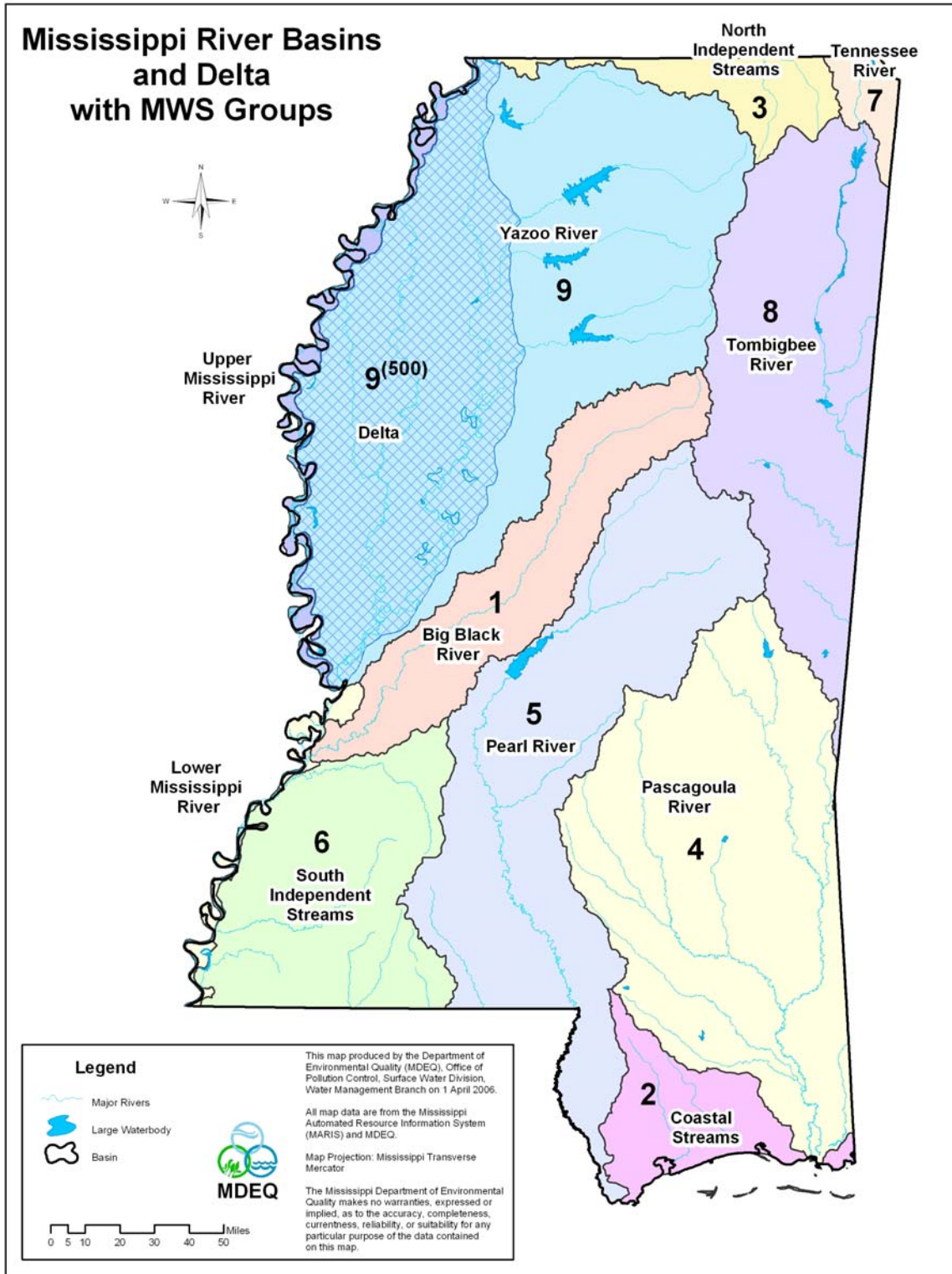


MDEQ ■ PO Box 2261 ■ Jackson MS 39225-2261 ■ (601) 961-5171

Mississippi 2012 Section 303(d) List of Impaired Water Bodies

Table of Contents

INTRODUCTION	5
REGULATORY REQUIREMENT	5
ASSESSMENT METHODOLOGY	5
FISH AND SHELLFISH CONSUMPTION ADVISORIES AND IMPAIRED WATERS	6
LAYOUT OF THE TABLES	6
DESCRIPTION OF TABLE	6
WATER BODY IDENTIFICATION NUMBERS	7
HISTORICAL NUMBERING SYSTEM	7
EXCEPTIONS TO THE HISTORICAL NUMBERING SYSTEM	7
INTERMEDIATE NUMBERING SYSTEM	7
CURRENT NUMBERING SYSTEM	7
BASIN MAPS	8
TMDLS SCHEDULED FOR THE NEXT TWO YEARS	8
TMDL PRIORITIZATION	8
PUBLIC PARTICIPATION AND APPROVAL PROCESS	8
TABLE A IMPAIRED WATERS LISTING	9
REFERENCES	23
APPENDIX A ATLAS	25



INTRODUCTION

Mississippi's 2012 Section 303(d) List of Impaired Water Bodies fulfills the state's obligation with respect to §303(d) of the Federal Clean Water Act to develop a listing of the state's impaired waters. MDEQ provides two reports, this §303(d) list and a §305(b) report. These are not physically integrated, but the lists are meant to have a one-to-one relationship in that all of the water body segments found in the §305(b) report listed in category 5 are also listed in this document. This §303(d) document includes tables showing the impaired water bodies in each of the state's river basins. These basins are shown on the map on page 4.

1. Big Black River Basin
2. Coastal Streams Basin
3. North Independent Streams Basin
4. Pascagoula River Basin
5. Pearl River Basin
6. South Independent Streams and Lower Mississippi River Basins
7. Tennessee River Basin
8. Tombigbee River Basin
9. Yazoo River and Upper Mississippi River Basins

Regulatory Requirement

Section 303(d) of the Clean Water Act and the implementing federal regulations at 40 C.F.R. §130.7 require the state to identify those waters within its jurisdiction for which effluent limitations are not sufficient to implement one or more applicable water quality standards and for which TMDLs are not yet completed. The state is to establish a priority ranking for such waters, taking into account the severity of the pollution and the designated uses to be made of such waters.

ASSESSMENT METHODOLOGY

Assessments for 2012 are based on current site-specific monitoring data believed to accurately portray existing water quality conditions. A water body is considered monitored if sufficient (in quantity, quality, and frequency) physical, chemical, biological, bacteriological, and/or fish tissue data were collected and assessed on the water body data from January 1, 2006 to December 31, 2010.

Physical and chemical data include such parameters as pH, temperature, dissolved oxygen, toxicants, turbidity, total dissolved solids (TDS), and specific conductance. Biological data include the community structure of aquatic insects, other macroinvertebrates, fish, and/or algae. Bacteriological data include water column surveys for fecal coliform bacteria, *E coli*, or enterococci bacteria. Fish tissue data include the analyses of fish flesh for the presence of toxic organic chemicals and metals. The length of record of the data, the quality of the data, and the frequency at which the data are collected were considered in making use attainment decisions. In general, data used for use support attainment decisions were collected, analyzed, and

interpreted in a manner consistent with state and EPA guidelines and in such a way as to allow for the accurate interpretation of the state's water quality standards. The details of the assessment methodology can be found in the state's *Mississippi CALM [Consolidated Assessment Listing Methodology] for 2012*, [CALM] (MDEQ, 2011).

For 2012, MDEQ considered all known and readily available information on the quality of the state's waters in conjunction with the rotating basin approach and MDEQ's §305(b) assessment program. However, only data that allowed for the accurate interpretation of the state's water quality standards or provided compelling evidence were used for §303(d) listing decisions.

Fish and Shellfish Consumption Advisories and Impaired Waters

Non-attainment of the fish consumption use was assessed for a water body based on the presence of a fish consumption advisory supported by fish tissue monitoring data. Water bodies with fish consumption advisories, "restricted" or "no consumption," were assessed as not attaining the fish consumption use support designation.

Coastal water bodies with the Shellfish designated use that have consumption advisories are not included in the 2012 §303(d) List because these waters already have completed TMDLs for pathogens. These TMDLs are available for review on MDEQ's website.

LAYOUT OF THE TABLES

Description of Table

The table is sorted alphabetically by the River Basin then by the water body name. The water body general location is given for the segment including a community located near the water body segment. The extent of the segment is described beginning with the upstream boundary thence to the downstream boundary.

The historical or current water body ID along with the counties the segment is located is included. The USGS hydrologic unit code 8-digit (HUC) is also given for the segment. The impaired use refers to the designated use associated with the pollutant cause shown. If there are multiple pollutants and/or uses for a water body, these are shown as multiple listings for the water body.

The table also gives the MDEQ due date for the TMDL and the year the segment was originally included in the §303(d) list. The due date, which is 13 years after initial listing, is determined from EPA guidance. These water segments will have TMDLs completed in accordance with EPA rules and regulations.

Water Body Identification Numbers

Historical Numbering System

The historical water body identification number for each water body listed contains a reference to the watershed of its location. Mississippi's river basins were divided into 482 watersheds. The specific location of a water body can be found by finding its ID next to a highlighted stream on one of the maps or by comparing the first three numbers in the water body's ID to the watershed numbers shown on the basin maps. For example, MS457E, Annas Bottom, is located in watershed 457 near Natchez. There are a few of these identified segments on the 2012 list.

Exceptions to the Historical Numbering System

There are some exceptions within this numbering convention. Namely, when a water body serves as a boundary between two watersheds, the water body is identified by an abbreviation of the water body's name. For example, water body MSBGCHTRM2 is the identification for the Bogue Chitto River.

Intermediate Numbering System

In the 2002 and 2004 §303(d) lists, MDEQ used a numbering system based on identification of the river basin and the 11-digit USGS HUC system. This system was updated in 2006.

Current Numbering System

MDEQ and USGS completed work on the new 12-digit watershed based delineation of Mississippi in 2005. MDEQ incorporated this new delineation into the identification numbering system for water body segments in the states 2006 §305(b) report. This will be used for future §303(d) waters added to the list.

The new delineated subwatersheds are smaller in size than the watersheds used in the 2004 list. Whereas the previous numbering system relied upon the river basins being divided into 482 watersheds, the new numbering system includes 1294 subwatersheds. Each new water body segment in the 2006 and 2008 lists were identified by a six digit numeric code. This 2012 §303(d) list will use the same numbering system. The first digit identifies which basin contains the water body. The major river basins are numbered 1 through 9 in alphabetical order (1 for the Big Black River Basin, 2 for the Coastal Streams Basin, through 9 for the Yazoo Basin.) [See map on page 4.]

The next three digits in the six digit water body identification number refer to the specific subwatershed within that basin. Each major river basin has the subwatersheds it contains numbered beginning with 1 (subwatershed 146 located in the Big Black River Basin would be numbered 1146, subwatershed 74 located in the Pascagoula River Basin would be numbered

4074.) Within the Yazoo River Basin, the subwatersheds located in the Hills region are numbered beginning with 1 and the subwatersheds located in the Mississippi River Delta are numbered beginning with 500. The final two digits in the six digit water body identification number refer to a specific stream segment within the specified subwatershed. For instance, Beaver Creek, water body ID 521413, is stream segment 13 in subwatershed 214 in the Pearl River Basin.

Basin Maps

Maps are included in Appendix A for each basin. Streams shown in blue are the impaired stream segments. In some river basins, the maps were split into 8-digit Hydrologic Unit Codes to better fit the page.

TMDLs SCHEDULED FOR THE NEXT TWO YEARS

For water body listings added as a result of recent monitoring, MDEQ anticipates developing these TMDLs within 13 years of the original listing. The TMDL projected completion dates given in the table are based on plans developed between MDEQ and EPA for TMDL development for the next two years. These dates are given for information only and are not a commitment by MDEQ of TMDL completion.

TMDL PRIORITIZATION

MDEQ will follow the basin plan to develop TMDLs in conjunction with monitoring and implementation activities associated with the basin plan and its progress through the various river basins. TMDLs will be prioritized based on the pollutant of concern, the basin plan rotation, and the designated use of the water.

PUBLIC PARTICIPATION AND APPROVAL PROCESS

MDEQ notified the public of the availability of this document by publishing a Public Notice in a statewide newspaper as well as selected regional newspapers. Additionally, MDEQ sent notices of availability to those addressees on the TMDL notification list.

The public was invited to comment on the content of this document. The Public Notice period began on April 1, 2012 and went until May 1, 2012. Comments were requested by mail or electronic submission and in person at a Public Hearing held in MDEQ's offices on May 1, 2012. This proposed document will be submitted to the Mississippi Commission on Environmental Quality for adoption. Once adopted by the Commission, the 2012 §303(d) List will be submitted to EPA Region 4 for final approval, and then the Mississippi 2012 §303(d) List of Impaired Water Bodies will be filed with the Mississippi Secretary of State in compliance with state law.

Basin	Water Body Name	Water Body ID	County	USGS HUC	Impaired Use	Pollutant	TMDL Due Date	Location	Original Cycle
BIG BLACK RIVER	ATWOOD CREEK	103012	ATTALA	8060201	Fish & Wildlife	Biological Impairment	4/1/2021	NEAR KOSCIUSKO FROM HEADWATERS TO MOUTH AT APOOKTA CREEK	2008
BIG BLACK RIVER	BEAR CREEK	107711	WARREN	8060202	Fish & Wildlife	Biological Impairment	4/1/2025	NEAR YOUNGTON FROM RAWHIDE ROAD TO MOUTH AT BIG BLACK RIVER	2012
BIG BLACK RIVER	BEAVER CREEK	107411	YAZOO	8060202	Fish & Wildlife	Biological Impairment	6/23/2024	FROM HEADWATERS TO MOUTH AT BIG BLACK RIVER	2010
BIG BLACK RIVER	BIG BLACK RIVER	100111	WEBSTER, CHOCTAW	8060201	Fish & Wildlife	Biological Impairment	4/17/2020	NEAR MATHISTON FROM HEADWATERS TO MWS 1003 BOUNDARY	2006
BIG BLACK RIVER	BIG BLACK RIVER	107811	YAZOO, MADISON, HINDS, WARREN	8060202	Fish & Wildlife	pH	4/1/2025	FROM CONFLUENCE WITH BEAR CREEK TO CONFLUENCE WITH CLEAR CREEK	2012
BIG BLACK RIVER	BIG CYPRESS CREEK	104812	HOLMES	8060202	Fish & Wildlife	Biological Impairment	4/1/2025	NEAR FRANKLIN FROM HEADWATERS TO CONFLUENCE WITH UNNAMED INTERMITTENT TRIBUTARY DOWN STREAM OF HIGHWAY 17 BRIDGE	2012
BIG BLACK RIVER	BIG SAND CREEK	108311	HINDS, CLAIBORNE	8060202	Fish & Wildlife	Biological Impairment	6/23/2024	FROM HEADWATERS TO MOUTH AT BIG BLACK RIVER	2010
BIG BLACK RIVER	FIVEMILE CREEK	108211	HINDS	8060202	Fish & Wildlife	Biological Impairment	6/23/2024	FROM HEADWATERS TO MOUTH AT BIG BLACK RIVER	2010
BIG BLACK RIVER	FLEETWOOD CREEK	109113	HINDS	8060202	Fish & Wildlife	Biological Impairment	6/23/2024	FROM HEADWATERS TO CONFLUENCE WITH BAKERS CREEK	2010
BIG BLACK RIVER	HAMER BAYOU	109312	WARREN	8060202	Fish & Wildlife	Biological Impairment	6/23/2024	FROM HEADWATERS TO MOUTH AT BIG BLACK RIVER	2010
BIG BLACK RIVER	HOBUCK CREEK	105511	MADISON	8060202	Fish & Wildlife	Biological Impairment	6/23/2024	FROM HEADWATERS TO CONFLUENCE WITH DOAKS CREEK	2010
BIG BLACK RIVER	JIMS BAYOU	109311	WARREN	8060202	Fish & Wildlife	Biological Impairment	6/23/2017	NEAR REGANTON FROM HEADWATERS TO MOUTH AT BIG BLACK RIVER	2002
BIG BLACK RIVER	JORDAN CREEK	102911	HOLMES	8060201	Fish & Wildlife	Biological Impairment	4/1/2021	NEAR HOFFMAN FROM HEADWATERS TO MOUTH AT BIG BLACK RIVER	2008
BIG BLACK RIVER	LITTLE BEAR CREEK	105712	MADISON	8060202	Fish & Wildlife	Biological Impairment	4/1/2025	AT MADISON FROM HEADWATERS TO MOUTH AT BEAR CREEK	2012
BIG BLACK RIVER	MUDDY CREEK	107912	WARREN	8060202	Fish & Wildlife	Biological Impairment	6/23/2024	FROM HEADWATERS TO CONFLUENCE WITH CLEAR CREEK	2010
BIG BLACK RIVER	PEPPER / RUCKER CREEK	104511	YAZOO	8060202	Fish & Wildlife	Biological Impairment	4/1/2025	NEAR CANTON FROM HEADWATERS TO MOUTH AT BEAVER RUN	2012
BIG BLACK RIVER	PERSIMMON CREEK	106311	MADISON	8060202	Fish & Wildlife	Biological Impairment	6/23/2024	FROM HEADWATERS TO CONFLUENCE WITH BIG BLACK RIVER	2010
BIG BLACK RIVER	PORTER CREEK	107611	HINDS	8060202	Fish & Wildlife	Biological Impairment	4/1/2025	NEAR LYNCHBURG FROM HEADWATERS TO MOUTH AT BIG BLACK RIVER	2012
BIG BLACK RIVER	RAMBO CREEK	103912	MADISON, LEAKE	8060201	Fish & Wildlife	Biological Impairment	6/23/2024	FROM HEADWATERS TO CONFLUENCE WITH HINDS CREEK	2010
BIG BLACK RIVER	SAND CREEK	101112	WEBSTER	8060201	Fish & Wildlife	Biological Impairment	4/1/2021	FROM HEADWATERS TO MOUTH AT CALABRELLA CREEK	2008
BIG BLACK RIVER	TURKEY CREEK	108711	HINDS	8060202	Fish & Wildlife	Biological Impairment	6/23/2024	FROM HEADWATERS TO MOUTH AT FOURTEEN MILE CREEK	2010
BIG BLACK RIVER	UNNAMED TRIBUTARY TO PIGEON ROOST CREEK	100411	OKTIBBEHA	8060201	Fish & Wildlife	Biological Impairment	4/1/2021	FROM HEADWATERS TO MOUTH AT PIGEON ROOST CREEK	2008
BIG BLACK RIVER	WILLIS CREEK	109511	WARREN	8060202	Fish & Wildlife	Biological Impairment	6/23/2017	NEAR GALLOWAY FROM HEADWATERS TO MOUTH AT BIG BLACK RIVER	2002

COASTAL STREAMS	BAYOU CASOTTE	200313	JACKSON	3170009	Fish & Wildlife	Organic Enrichment / Low Dissolved Oxygen	4/17/2020	AT PASCAGOULA FROM THE CONFLUENCE OF WEST PRONG AND EAST PRONG TO THE TURNING BASIN	2006
COASTAL STREAMS	BAYOU CASOTTE WEST PRONG	200312	JACKSON	3170009	Fish & Wildlife	Organic Enrichment / Low Dissolved Oxygen	6/23/2024	AT PASCAGOULA FROM LOUISE ST. TO THE CONFLUENCE OF WEST PRONG AND EAST PRONG	2010
COASTAL STREAMS	BAYOU CUMBEST	200311	JACKSON	3170009	Fish & Wildlife	Organic Enrichment / Low Dissolved Oxygen	4/17/2020	NEAR ORANGE GROVE: FROM COUNTY ROAD EAST OF ORANGE GROVE TO MOUTH AT POINT AUX CHENES BAY	2006
COASTAL STREAMS	CATAHOULA CREEK	203311	HANCOCK	3170009	Fish & Wildlife	Biological Impairment	4/1/2025	NEAR SANTA ROSA FROM HEADWATERS TO CONFLUENCE WITH JOURDAN RIVER	2012
COASTAL STREAMS	CATALPA BAYOU	201611	JACKSON	3170009	Fish & Wildlife	Biological Impairment	4/1/2025	NEAR LATIMER FROM HEADWATERS TO MOUTH AT TCHOUTACABOUFFA RIVER	2012
COASTAL STREAMS	DEAD TIGER CREEK	203711	HANCOCK	3170009	Fish & Wildlife	Biological Impairment	4/17/2020	NEAR KILN FROM HEADWATERS TO CONFLUENCE WITH CATAHOULA CREEK	2006
COASTAL STREAMS	FLAT BRANCH	200914	HARRISON	3170009	Fish & Wildlife	Biological Impairment	4/1/2025	NEAR HOVEY FROM HEADWATERS TO MOUTH AT SAUCIER CREEK	2012
COASTAL STREAMS	FLAT BRANCH	202111	HARRISON	3170009	Fish & Wildlife	Biological Impairment	6/23/2017	NEAR GULFPORT FROM HEADWATERS TO MOUTH AT BERNARD BAYOU	2002
COASTAL STREAMS	GULF PARK ESTATES BEACH	250411	JACKSON	3170009	Recreation	Enterococci	4/1/2021	NEAR OCEAN SPRINGS FROM PELICAN AVE TO DEER STREET	2008
COASTAL STREAMS	GULF PARK ESTATES BEACH	250411	JACKSON	3170009	Fish & Wildlife	Total Nitrogen	4/1/2025	NEAR OCEAN SPRINGS FROM PELICAN AVE TO DEER STREET	2012
COASTAL STREAMS	GULFPORT EAST BEACH	250313	HARRISON	3170009	Recreation	Enterococci	4/17/2020	AT GULFPORT FROM TEAGARDEN ROAD EAST TO THE EASTERN SIDE OF WILLIAM CAREY COLLEGE	2006
COASTAL STREAMS	PALMER CREEK	200915	HARRISON	3170009	Fish & Wildlife	Biological Impairment	4/1/2025	NEAR SUCCESS FROM HEADWATERS TO MOUTH AT BILOXI RIVER	2012
COASTAL STREAMS	RAILROAD CREEK	201411	STONE, JACKSON, HARRISON	3170009	Fish & Wildlife	Biological Impairment	4/1/2025	NEAR VESTRY FROM HEADWATERS TO MOUTH AT RAMSEY CREEK	2012
COASTAL STREAMS	TIGER CREEK	200912	HARRISON	3170009	Fish & Wildlife	Biological Impairment	4/1/2025	NEAR SUCCESS FROM HEADWATERS TO MOUTH AT BILOXI RIVER	2012
COASTAL STREAMS	TURKEY CREEK	202211	HARRISON	3170009	Fish & Wildlife	Biological Impairment	6/23/2017	NEAR LONG BEACH FROM CONFLUENCE WITH CANAL #2 TO HIGHWAY 49	2002
COASTAL STREAMS	WEST CREEK	201012	STONE, HARRISON	3170009	Fish & Wildlife	Biological Impairment	4/1/2025	NEAR HOWISON FROM CONFLUENCE WITH MCHENRY CREEK TO MOUTH AT SAUCIER CREEK	2012
COASTAL STREAMS	WOLF CREEK	205311	HANCOCK, HARRISON	3170009	Fish & Wildlife	Biological Impairment	4/1/2025	NEAR DEDEAUX FROM HEADWATERS TO MOUTH AT WOLF RIVER	2012

2012 DRAFT Mississippi
Section 303(d) List of Impaired Water Bodies

NORTH INDEPENDENT STREAMS	HATCHIE RIVER	302411	ALCORN	8010207	Fish & Wildlife	pH	4/1/2025	NEAR WALNUT FROM THE MWS 3019 BOUNDARY TO THE MS/TN STATE LINE	2012
NORTH INDEPENDENT STREAMS	OWL CREEK	301412	TIPPAH	8010207	Fish & Wildlife	Biological Impairment	6/23/2024	FROM HEADWATERS TO MOUTH AT LITTLE HATCHIE RIVER	2010
NORTH INDEPENDENT STREAMS	TAREBREECHES CREEK	301212	ALCORN	8010207	Fish & Wildlife	Biological Impairment	6/23/2024	FROM HEADWATERS TO MOUTH AT TUSCUMBIA RIVER CANAL	2010
NORTH INDEPENDENT STREAMS	TUSCUMBIA RIVER CANAL	301211	ALCORN	8010208	Fish & Wildlife	pH	4/1/2025	AT HIGHWAY 72 FROM CONFLUENCE WITH EASTES CREEK TO CONFLUENCE WITH TAREBREECHES CREEK	2012
NORTH INDEPENDENT STREAMS	WEST PRONG MUDDY CREEK	302011	TIPPAH	8010207	Fish & Wildlife	Biological Impairment	4/1/2025	AT FALKNER FROM HEADWATERS TO MOUTH AT MUDDY CREEK	2012

PASCAGOULA RIVER	ANDERSON BRANCH	401711	NEWTON	3170001	Fish & Wildlife	Biological Impairment	4/17/2020	NEAR DECATUR FROM HEADWATERS TO MOUTH AT OKAHATTA CREEK	2006
PASCAGOULA RIVER	ARCHUSA CREEK	405111	CLARKE	3170002	Fish & Wildlife	Biological Impairment	4/1/2025	NEAR ENTERPRISE FROM HEADWATERS AT UNNAMED IMPOUNDMENT TO MWS 4052 BOUNDARY NEAR MOORE MILL CREEK	2012
PASCAGOULA RIVER	BEAVER CREEK	421212	PERRY	3170007	Fish & Wildlife	Biological Impairment	4/1/2025	NEAR BARBARA FROM HEADWATERS TO MOUTH AT HICKORY CREEK	2012
PASCAGOULA RIVER	BLACK CREEK	421111	PERRY, STONE	3170007	Recreation	Pathogens	6/23/2024	FROM CONFLUENCE OF CYPRESS CREEK TO MWS 4215 BOUNDARY	2010
PASCAGOULA RIVER	CHUNKY CREEK	401511	NEWTON	3170001	Fish & Wildlife	Biological Impairment	4/17/2020	NEAR UNION FROM HEADWATERS TO MWS 4018 BOUNDARY	2006
PASCAGOULA RIVER	CHUNKY CREEK	401811	NEWTON	3170001	Fish & Wildlife	Biological Impairment	6/23/2024	FROM CONFLUENCE WITH SMITH BRANCH TO MOUTH AT OKAHATTA CREEK	2010
PASCAGOULA RIVER	CHUNKY RIVER	402611	LAUDERDALE, CLARKE	3170001	Fish & Wildlife	Biological Impairment	4/17/2020	NEAR ENTERPRISE FROM CONFLUENCE WITH POSSUM CREEK TO MOUTH AT CHICKASAWHAY RIVER	2006
PASCAGOULA RIVER	CLEAR CREEK	409013	SMITH	3170004	Fish & Wildlife	Biological Impairment	4/1/2025	NEAR TRAZLER FROM HEADWATERS TO MOUTH AT OAKOHAY CREEK	2012
PASCAGOULA RIVER	DRY CREEK	403811	CLARKE, WAYNE	3170002	Fish & Wildlife	Biological Impairment	4/1/2025	NEAR MATHERVILLE FROM HEADWATERS TO MOUTH AT BUCKATUNNA CREEK	2012
PASCAGOULA RIVER	EUCUTTA CREEK	405811	WAYNE, CLARKE	3170002	Fish & Wildlife	Biological Impairment	4/1/2025	NEAR SHUBUTA FROM OUTFALL OF SMALL UNNAMED POND TO CONFLUENCE WITH CHICKASAWHAY RIVER	2012
PASCAGOULA RIVER	FLINT CREEK	420211	STONE	3170007	Fish & Wildlife	Biological Impairment	4/1/2025	AT WIGGINS FROM OUTFALL OF FLINT CREEK RESERVOIR TO MOUTH AT RED CREEK	2012
PASCAGOULA RIVER	GORDON CREEK	405011	CLARKE	3170002	Fish & Wildlife	Biological Impairment	4/1/2025	NEAR ELWOOD FROM HEADWATERS TO MOUTH AT SOUENLOVIE CREEK	2012
PASCAGOULA RIVER	HORSE BRANCH	413612	JASPER	3170005	Fish & Wildlife	Biological Impairment	4/17/2020	NEAR HEIDELBERG FROM HEADWATERS TO MOUTH AT TALLAHATTAH CREEK	2006
PASCAGOULA RIVER	INDIAN CREEK	417612	GEORGE	3170006	Fish & Wildlife	Biological Impairment	4/1/2025	NEAR BASIN FROM HEADWATERS TO MOUTH AT PASCAGOULA RIVER	2012
PASCAGOULA RIVER	LEONARDS MILL CREEK	410312	COVINGTON	3170004	Fish & Wildlife	Biological Impairment	6/23/2024	FROM HEADWATERS TO MOUTH AT OKATOMA CREEK	2010
PASCAGOULA RIVER	LITTLE CEDAR CREEK	417411	GEORGE	3170006	Fish & Wildlife	Biological Impairment	4/1/2025	NEAR LUCEDALE FROM HEADWATERS TO MOUTH AT BIG CEDAR CREEK	2012
PASCAGOULA RIVER	LITTLE OAKAHAY CREEK	408912	SMITH	3170004	Fish & Wildlife	Biological Impairment	4/1/2025	NEAR BURNS FROM HEADWATERS TO MOUTH AT OAKOHAY CREEK	2012
PASCAGOULA RIVER	LONG CREEK	403011	LAUDERDALE, CLARKE	3170002	Fish & Wildlife	Biological Impairment	6/23/2024	FROM CONFLUENCE WITH GAYS BRANCH TO MWS 4031 BOUNDARY	2010
PASCAGOULA RIVER	LONG CREEK	403111	CLARKE	3170002	Fish & Wildlife	Biological Impairment	6/23/2024	FROM MWS 4030 BOUNDARY TO MOUTH AT BUCKATUNNA CREEK	2010
PASCAGOULA RIVER	OKATIBBEE CREEK	401011	LAUDERDALE	3170001	Fish & Wildlife	Biological Impairment	6/23/2017	NEAR SAVOY FROM CONFLUENCE WITH SOWASHEE CREEK TO MWS 4011 BOUNDARY	2002
PASCAGOULA RIVER	OKATIBBEE CREEK	401011	LAUDERDALE	3170001	Fish & Wildlife	pH	4/1/2025	NEAR SAVOY FROM CONFLUENCE WITH SOWASHEE CREEK TO MWS 4011 BOUNDARY	2012
PASCAGOULA RIVER	OKATIBBEE CREEK	401011	LAUDERDALE	3170001	Fish & Wildlife	Total Nitrogen	4/1/2025	NEAR SAVOY FROM CONFLUENCE WITH SOWASHEE CREEK TO MWS 4011 BOUNDARY	2012
PASCAGOULA RIVER	OKATIBBEE CREEK	401111	LAUDERDALE	3170001	Fish & Wildlife	Biological Impairment	6/23/2017	FROM THE MWS 4010 BOUNDARY TO THE MOUTH AT CHICKASAWHAY RIVER	2002
PASCAGOULA RIVER	OKATOMA CREEK	410511	COVINGTON	3170002	Fish & Wildlife	pH	4/1/2025	AT KOLA FROM CONFLUENCE WITH ROGER CREEK TO MWS 4107 BOUNDARY NEAR GIN BRANCH	2012
PASCAGOULA RIVER	OKATOMA CREEK	410511	COVINGTON	3170003	Fish & Wildlife	Total Nitrogen	4/1/2025	AT KOLA FROM CONFLUENCE WITH ROGER CREEK TO MWS 4107 BOUNDARY NEAR GIN BRANCH	2012
PASCAGOULA RIVER	PATTON CREEK	406211	WAYNE	3170002	Fish & Wildlife	Biological Impairment	4/17/2020	NEAR WAYNESBORO FROM WAYNESBORO LAKE TO MOUTH AT CHICKASAWHAY RIVER	2006
PASCAGOULA RIVER	PENANTLY CREEK	404712	JASPER	3170002	Fish & Wildlife	Biological Impairment	4/1/2025	AT ROSE HILL FROM HEADWATERS TO MOUTH AT SOUENLOVIE CREEK	2012
PASCAGOULA RIVER	PRAIRIE CREEK	413911	JASPER	3170005	Fish & Wildlife	Biological Impairment	4/17/2020	NEAR HEILDELBERG FROM HEADWATERS TO MOUTH AT BOGUE HOMO	2006
PASCAGOULA RIVER	REESE CREEK	416213	FORREST	3170004	Fish & Wildlife	Organic Enrichment / Low Dissolved Oxygen	4/17/2020	NEAR HATTIESBURG FROM HEADWATERS TO TEMPLE ROAD	2006
PASCAGOULA RIVER	ROCKY CREEK	403311	CLARKE	3170002	Fish & Wildlife	Biological Impairment	4/1/2025	NEAR LINTON FROM HEADWATERS TO MOUTH AT BUCKATUNNA CREEK	2012
PASCAGOULA RIVER	SHELTON CREEK	410812	JONES, COVINGTON	3170004	Fish & Wildlife	Biological Impairment	4/1/2025	AT LUX FROM HEADWATERS TO MOUTH AT OKATOMA CREEK	2012
PASCAGOULA RIVER	SOUENLOVIE CREEK	404811	NEWTON, JASPER	3170002	Fish & Wildlife	Biological Impairment	6/23/2024	FROM CONFLUENCE WITH PENANTLY CREEK TO CONFLUENCE WITH TWISTWOOD CREEK	2010
PASCAGOULA RIVER	SOWASHEE CREEK	400811	LAUDERDALE	3170001	Fish & Wildlife	Total Nitrogen	6/23/2017	AT MERIDIAN FROM HEADWATERS TO CONFLUENCE WITH UNNAMED TRIB AT MWS 4237 BOUNDARY	2002
PASCAGOULA RIVER	SOWASHEE CREEK	400811	LAUDERDALE	3170001	Fish & Wildlife	Total Phosphorus	6/23/2017	AT MERIDIAN FROM HEADWATERS TO CONFLUENCE WITH UNNAMED TRIB AT MWS 4237 BOUNDARY	2002
PASCAGOULA RIVER	SOWASHEE CREEK	400911	LAUDERDALE	3170001	Fish & Wildlife	Total Nitrogen	6/23/2017	FROM CONFLUENCE WITH UNNAMED TRIB AT MWS 4237 BOUNDARY TO CONFLUENCE WITH OKATIBBEE CREEK	2002
PASCAGOULA RIVER	SOWASHEE CREEK	400911	LAUDERDALE	3170001	Fish & Wildlife	Total Phosphorus	6/23/2017	FROM CONFLUENCE WITH UNNAMED TRIB AT MWS 4237 BOUNDARY TO CONFLUENCE WITH OKATIBBEE CREEK	2002

PASCAGOULA RIVER	SOWASHEE CREEK	423711	LAUDERDALE	3170001	Fish & Wildlife	Total Nitrogen	6/23/2017	NEAR MERIDIAN FROM MWS 4008 BOUNDARY TO MWS 4009 BOUNDARY	2010
PASCAGOULA RIVER	SOWASHEE CREEK	423711	LAUDERDALE	3170001	Fish & Wildlife	Total Phosphorus	6/23/2017	NEAR MERIDIAN FROM MWS 4008 BOUNDARY TO MWS 4009 BOUNDARY	2010
PASCAGOULA RIVER	TALLAHALA CREEK	415511	JONES, FORREST, PERRY	3170005	Fish & Wildlife	pH	4/1/2025	AT RUNNELSTOWN FROM CONFLUENCE WITH COURTNEY CREEK TO MWS 4156 BOUNDARY NEAR HAMMOCK BRANCH	2012
PASCAGOULA RIVER	TALLAHALA CREEK	415511	JONES, FORREST, PERRY	3170005	Fish & Wildlife	Total Nitrogen	4/1/2025	AT RUNNELSTOWN FROM CONFLUENCE WITH COURTNEY CREEK TO MWS 4156 BOUNDARY NEAR HAMMOCK BRANCH	2012
PASCAGOULA RIVER	TALLAHALA CREEK	415511	JONES, FORREST, PERRY	3170005	Fish & Wildlife	Total Phosphorus	4/1/2025	AT RUNNELSTOWN FROM CONFLUENCE WITH COURTNEY CREEK TO MWS 4156 BOUNDARY NEAR HAMMOCK BRANCH	2012
PASCAGOULA RIVER	TALLAHALA CREEK	MS087T	JONES	3170005	Fish & Wildlife	Biological Impairment	6/23/2017	NEAR LAUREL FROM CONFLUENCE WITH TALLAHATTA CREEK TO CONFLUENCE WITH TALLAHOMA CREEK	2002
PASCAGOULA RIVER	TALLAHOMA CREEK	412511	JASPER, JONES	3170005	Fish & Wildlife	Biological Impairment	6/23/2017	NEAR LAUREL FROM CONFLUENCE WITH PINEY BRANCH TO MWS 4127 BOUNDARY	2002
PASCAGOULA RIVER	TALLAHOMA CREEK	412711	JASPER, JONES	3170005	Fish & Wildlife	Biological Impairment	6/23/2017	FROM MWS 4125 BOUNDARY TO CONFLUENCE WITH TERRAPIN CREEK	2002
PASCAGOULA RIVER	TALLAHOMA CREEK	412811	JASPER, JONES	3170005	Fish & Wildlife	Biological Impairment	6/23/2017	FROM CONFLUENCE WITH TERRAPIN CREEK TO CONFLUENCE WITH HORSE CREEK	2002
PASCAGOULA RIVER	TALLAHOMA CREEK	412911	JASPER, JONES	3170005	Fish & Wildlife	Biological Impairment	6/23/2017	FROM CONFLUENCE WITH HORSE CREEK TO CONFLUENCE WITH TALLAHALA CREEK	2002
PASCAGOULA RIVER	TALLASHUA CREEK	401412	NEWTON	3170001	Fish & Wildlife	Biological Impairment	4/1/2025	AT PERDUE FROM MWS 4012 BOUNDARY AT CONFLUENCE OF BIG JOHN BRANCH TO CONFLUENCE WITH LITTLE ROCK CREEK	2012
PASCAGOULA RIVER	TERRIBLE CREEK	411311	COVINGTON	3170004	Fish & Wildlife	Biological Impairment	4/1/2025	NEAR WILLIAMSBURG FROM HEADWATERS TO MOUTH AT BOUIE RIVER	2012
PASCAGOULA RIVER	TIGER CREEK	414512	JONES	3170005	Fish & Wildlife	Biological Impairment	4/1/2025	NEAR OVETT FROM CONFLUENCE WITH EAST TIGER CREEK AT THE MWS 4144 BOUNDARY TO MOUTH AT BOGUE HOMO	2012
PASCAGOULA RIVER	UNNAMED TRIBUTARY OF LEAF RIVER	416511	PERRY	3170005	Fish & Wildlife	Biological Impairment	8/11/2012	AT BEAUMONT: FROM HEADWATERS TO MOUTH AT LEAF RIVER	1998
PASCAGOULA RIVER	UNNAMED TRIBUTARY TO OAKAHAY CREEK	409014	SMITH	3170004	Fish & Wildlife	Biological Impairment	4/1/2025	NEAR RALEIGH FROM HEADWATERS TO MOUTH AT OAKOHAY CREEK	2012
PASCAGOULA RIVER	WEST BOUIE CREEK	411212	JEFFERSON DAVIS	3170004	Fish & Wildlife	Biological Impairment	4/1/2025	NEAR BASSFIELD FROM HEADWATERS TO CONFLUENCE WITH BOUIE RIVER	2012

PEARL RIVER	ASHLOG CREEK	508313	RANKIN	3180002	Fish & Wildlife	Biological Impairment	4/1/2025	NEAR PELAHATCHIE FROM HEADWATERS TO MOUTH AT PELAHATCHIE CREEK	2012
PEARL RIVER	BAHALA CREEK	513911	COPIAH	3180003	Fish & Wildlife	Biological Impairment	6/23/2024	FROM CONFLUENCE WITH RUSSELL CREEK TO CONFLUENCE WITH LITTLE BAHALA CREEK	2010
PEARL RIVER	BEAVER CREEK	521413	PIKE	3180005	Fish & Wildlife	Biological Impairment	4/17/2020	NEAR JOHNSTONS STATION FROM OUTFALL OF DIXIE SPRINGS LAKE TO MOUTH AT BOGUE CHITTO RIVER	2006
PEARL RIVER	BIG CREEK	513211	SIMPSON	3180002	Fish & Wildlife	Biological Impairment	4/1/2025	NEAR HARRISVILLE FROM MWS 5131 BOUNDARY AT HEED NEELY ROAD BRIDGE TO MOUTH AT STRONG RIVER	2012
PEARL RIVER	BOGUE CHITTO RIVER	MSBGCHTRM2	LINCOLN, PIKE	3180005	Fish & Wildlife	Biological Impairment	6/23/2017	FROM CONFLUENCE OF BOONE CREEK TO JOHNSON'S STATION	2002
PEARL RIVER	BOONE CREEK	521113	LINCOLN	3180005	Fish & Wildlife	Biological Impairment	4/1/2025	NEAR BROOKHAVEN FROM HEADWATERS TO MOUTH AT BOGUE CHITTO	2012
PEARL RIVER	CANEY CREEK	511411	SCOTT, SMITH	3180002	Fish & Wildlife	Biological Impairment	4/1/2025	NEAR PULASKI FROM HEADWATERS AT W MOORE TOWER ROAD TO MOUTH AT STRONG RIVER	2012
PEARL RIVER	CLEAR CREEK	508611	RANKIN	3180002	Fish & Wildlife	Biological Impairment	4/1/2025	NEAR PELAHATCHIE FROM HEADWATERS TO MOUTH AT PELAHATCHIE CREEK	2012
PEARL RIVER	COBBS CREEK	504111	LEAKE	3180001	Fish & Wildlife	Biological Impairment	4/1/2025	NEAR CARTHAGE FROM HEADWATERS TO MOUTH AT LOBUTCHA CREEK	2012
PEARL RIVER	HOLIDAY CREEK	516311	JEFFERSON DAVIS, MARION	3180003	Fish & Wildlife	Biological Impairment	6/23/2024	FROM CONFLUENCE WITH UNNAMED TRIBUTARY AT MWS 5162 BOUNDARY TO MOUTH AT PEARL RIVER	2010
PEARL RIVER	HOLLYBUSH CREEK	508612	RANKIN	3180002	Fish & Wildlife	Biological Impairment	4/1/2025	NEAR PELAHATCHIE FROM HEADWATERS TO MOUTH AT CLEAR CREEK	2012
PEARL RIVER	INDIAN CREEK	510212	RANKIN	3180002	Fish & Wildlife	Cadmium	4/1/2021	NEAR PEARL FROM HEADWATERS TO CONFLUENCE WITH STEEN CREEK	2008
PEARL RIVER	INDIAN CREEK	510212	RANKIN	3180002	Fish & Wildlife	Lead	6/23/2024	NEAR PEARL FROM HEADWATERS TO CONFLUENCE WITH STEEN CREEK	2010
PEARL RIVER	LIMESTONE CREEK	511011	SIMPSON	3180002	Fish & Wildlife	Biological Impairment	6/23/2024	FROM HEADWATERS TO MOUTH AT PEARL RIVER	2010
PEARL RIVER	LINE CREEK	508312	SCOTT, RANKIN	3180002	Fish & Wildlife	Biological Impairment	6/23/2024	FROM HEADWATERS TO MOUTH AT PELAHATCHIE CREEK	2010
PEARL RIVER	LITTLE BAHALA CREEK	514011	LINCOLN, LAWRENCE	3180003	Fish & Wildlife	Biological Impairment	4/1/2025	NEAR WESSON FROM HEADWATERS TO MOUTH AT BAHALA CREEK	2012
PEARL RIVER	LITTLE COPIAH CREEK	513312	COPIAH	3180003	Fish & Wildlife	Biological Impairment	4/1/2021	FROM HEADWATERS TO MOUTH AT COPIAH CREEK	2008
PEARL RIVER	LYNCH CREEK	509311	HINDS	3180002	Fish & Wildlife	Biological Impairment	6/23/2017	AT JACKSON FROM HEADWATERS TO THE PEARL RIVER	2002
PEARL RIVER	OWL CREEK	501111	KEMPER	3180001	Fish & Wildlife	Biological Impairment	6/23/2017	NEAR PRESTON FROM HEADWATERS TO THE BOGUE CHITTO RIVER	2002
PEARL RIVER	PURVIS CREEK	511711	RANKIN, SMITH	3180002	Fish & Wildlife	Biological Impairment	4/1/2025	NEAR POLKVILLE FROM HEADWATERS TO MOUTH AT STRONG RIVER	2012
PEARL RIVER	RIALS CREEK	512712	SIMPSON	3180002	Fish & Wildlife	Biological Impairment	6/23/2024	FROM HEADWATERS TO CONFLUENCE WITH SIMMONS BRANCH	2010
PEARL RIVER	SHIOLA CREEK	507111	LEAKE	3180001	Fish & Wildlife	Biological Impairment	4/1/2025	AT ST ANN FROM HEADWATERS TO MWS 5070 BOUNDARY AT ST ANN ROAD	2012
PEARL RIVER	STRONG RIVER	511911	SCOTT	3180002	Fish & Wildlife	pH	4/1/2025	NEAR D'LO TO MWS 5124 BOUNDARY AT CONFLUENCE WITH ROBINSON CREEK	2012
PEARL RIVER	SUGAR BOGUE	507612	SCOTT	3180002	Fish & Wildlife	Biological Impairment	6/23/2017	NEAR FORKVILLE FROM HEADWATERS TO MOUTH AT COFFEE BOGUE	2002
PEARL RIVER	TOWN CREEK	503211	LEAKE	3180001	Fish & Wildlife	Biological Impairment	6/23/2017	AT CARTHAGE FROM HEADWATERS TO THE PEARL RIVER	2002
PEARL RIVER	TURTLE SKIN CREEK	520511	HANCOCK	3180004	Fish & Wildlife	Biological Impairment	6/23/2017	NEAR SANTA ROSA FROM HEADWATERS TO CONFLUENCE WITH MIKES RIVER	2002
PEARL RIVER	UNNAMED TRIBUTARY TO CLEAR CREEK	521513	PIKE	3180005	Fish & Wildlife	Biological Impairment	4/17/2020	NEAR SUMMIT FROM HEADWATERS TO MOUTH AT CLEAR CREEK	2006
PEARL RIVER	UNNAMED TRIBUTARY TO TALLAHAGA CREEK	500712	WINSTON	3180001	Fish & Wildlife	Biological Impairment	4/1/2021	FROM HEADWATERS TO MOUTH AT TALLAHAGA CREEK	2008
PEARL RIVER	UPPER LITTLE CREEK	517011	LAMAR, MARION	3180004	Fish & Wildlife	Biological Impairment	6/23/2024	FROM CONFLUENCE WITH GRAVES CREEK TO MOUTH AT PEARL RIVER	2010
PEARL RIVER	WHITE SAND CREEK	516111	JEFFERSON DAVIS	3180003	Fish & Wildlife	Biological Impairment	6/23/2024	FROM CONFLUENCE WITH LITTLE WHITE SAND CREEK (JAYBIRD CREEK) TO MOUTH AT PEARL RIVER	2010

SOUTH INDEPENDENT STREAMS	BAYOU PIERRE	602812	CLAIBORNE	8060204	Fish & Wildlife	pH	4/1/2025	NEAR CARLISLE FROM THE CONFLUENCE WITH STORM CREEK TO THE 6029 MWS BOUNDARY NEAR THE CONFLUENCE WITH WHISKEY BRANCH	2012
SOUTH INDEPENDENT STREAMS	BAYOU SARA	610911	WILKINSON	8070201	Fish & Wildlife	Biological Impairment	6/23/2024	FROM HEADWATERS TO CONFLUENCE WITH DUNBAR CREEK	2010
SOUTH INDEPENDENT STREAMS	BEAR CREEK	610514	WILKINSON	8060206	Fish & Wildlife	Biological Impairment	6/23/2024	FROM HEADWATERS TO MOUTH AT BUFFALO RIVER	2010
SOUTH INDEPENDENT STREAMS	BOLLS CREEK	604611	JEFFERSON	8060204	Fish & Wildlife	Biological Impairment	6/23/2024	FROM HEADWATERS TO CONFLUENCE WITH NORTH FORK COLES CREEK	2010
SOUTH INDEPENDENT STREAMS	CARS CREEK	612112	AMITE	8070202	Fish & Wildlife	Biological Impairment	6/23/2017	NEAR LIBERTY FROM HEADWATERS TO MOUTH AT EAST FORK AMITE RIVER	2002
SOUTH INDEPENDENT STREAMS	CLARKS CREEK	604011	CLAIBORNE	8060203	Fish & Wildlife	Biological Impairment	6/23/2024	FROM CONFLUENCE WITH BUCKINS CREEK AT MWS 6039 BOUNDARY TO MOUTH AT BARLAND CREEK	2010
SOUTH INDEPENDENT STREAMS	COMITE CREEK	613211	WILKINSON, AMITE	8070202	Fish & Wildlife	Biological Impairment	4/17/2020	NEAR CENTREVILLE FROM HEADWATERS TO MOUTH AT MS/LA STATE LINE	2006
SOUTH INDEPENDENT STREAMS	DRY CREEK	608111	FRANKLIN	8060205	Fish & Wildlife	Biological Impairment	6/23/2024	FROM HEADWATERS TO MOUTH AT HOMOCHITTO RIVER	2010
SOUTH INDEPENDENT STREAMS	DRY CREEK	608211	FRANKLIN	8060205	Fish & Wildlife	Biological Impairment	4/1/2025	AT GARDEN CITY FROM HEADWATERS TO MOUTH AT HOMOCHITTO RIVER	2012
SOUTH INDEPENDENT STREAMS	FOLKES CREEK	605011	JEFFERSON	8060204	Fish & Wildlife	Biological Impairment	6/23/2024	FROM CONFLUENCE OF STAMPLEY CREEK AND COMPTON CREEK TO MOUTH AT SOUTH FORK COLES CREEK	2010
SOUTH INDEPENDENT STREAMS	GARRET CREEK	603811	JEFFERSON	8060203	Fish & Wildlife	Biological Impairment	4/1/2025	NEAR UNION CHURCH FROM HEADWATERS TO MOUTH AT FOSTER CREEK	2012
SOUTH INDEPENDENT STREAMS	HATCHER BAYOU	690411	WARREN	8060201	Fish & Wildlife	Biological Impairment	4/1/2025	AT VICKSBURG FROM MWS 6902 BOUNDARY AT FISHER FERRY ROAD TO MOUTH AT HENNESEYS BAYOU	2012
SOUTH INDEPENDENT STREAMS	HUGHES CREEK	603911	CLAIBORNE, JEFFERSON	8060203	Fish & Wildlife	Biological Impairment	4/1/2025	AT VIOLET FROM HEADWATERS TO MOUTH AT CLARKS CREEK	2012
SOUTH INDEPENDENT STREAMS	MUD ISLAND CREEK	604811	JEFFERSON	8060204	Fish & Wildlife	Biological Impairment	6/23/2024	FROM CONFLUENCE WITH FAIRCHILDS CREEK TO CONFLUENCE WITH NORTH FORK COLES CREEK	2010
SOUTH INDEPENDENT STREAMS	MUDDY BAYOU	600212	CLAIBORNE, JEFFERSON	8060100	Fish & Wildlife	Biological Impairment	6/23/2024	NEAR ALCORN FROM IMPOUNDMENT IN HEADWATERS TO MOUTH AT DOWD CREEK	2010
SOUTH INDEPENDENT STREAMS	NORTH FORK COLES CREEK	604411	JEFFERSON	8060204	Fish & Wildlife	Biological Impairment	6/23/2024	FROM HEADWATERS TO MWS 6045 BOUNDARY	2010
SOUTH INDEPENDENT STREAMS	NORTH FORK COLES CREEK	604511	JEFFERSON	8060204	Fish & Wildlife	Biological Impairment	6/23/2024	FROM MWS BOUNDARY 6044 TO MWS 6047 BOUNDARY	2010
SOUTH INDEPENDENT STREAMS	NORTH FORK COLES CREEK	604711	JEFFERSON	8060204	Fish & Wildlife	Biological Impairment	6/23/2024	FROM MWS BOUNDARY 6045 TO MOUTH AT COLES CREEK	2010

SOUTH INDEPENDENT STREAMS	PACES BAYOU	690311	WARREN	8060100	Fish & Wildlife	Biological Impairment	6/23/2024	FROM CONFLUENCE WITH REDBONE CREEK TO MOUTH AT HENNESSEY'S BAYOU	2010
SOUTH INDEPENDENT STREAMS	SAINT CATHRINES CREEK	600511	ADAMS	8060204	Fish & Wildlife	Biological Impairment	6/23/2017	AT NATCHEZ FROM HEADWATERS TO MOUTH AT MISSISSIPPI RIVER	2002
SOUTH INDEPENDENT STREAMS	STAFFORD CREEK	613212	WILKINSON	8070202	Fish & Wildlife	Biological Impairment	4/1/2021	FROM HEADWATERS TO MOUTH AT COMITE CREEK	2008
SOUTH INDEPENDENT STREAMS	STORM CREEK	602811	CLAIBORNE	8060203	Fish & Wildlife	Biological Impairment	6/23/2017	NEAR CARLISLE FROM HEADWATERS TO MOUTH AT BAYOU PIERRE	2002
SOUTH INDEPENDENT STREAMS	TERRYS CREEK	614211	PIKE	8070205	Fish & Wildlife	Biological Impairment	4/1/2025	AT TERRY CREEK FROM HEADWATERS TO MS/LA STATE LINE	2012
SOUTH INDEPENDENT STREAMS	WILLIS CREEK	603411	JEFFERSON, CLAIBORNE	8060203	Fish & Wildlife	Biological Impairment	4/1/2025	AT TILLMAN FROM HEADWATERS TO MWS 6035 BOUNDARY NEAR TILLMAN ROAD BRIDGE	2012

TENNESSEE RIVER	CANEY CREEK	700312	TISHOMINGO	6030005	Fish & Wildlife	Biological Impairment	6/23/2017	NEAR IUKA FROM HEADWATERS TO CONFLUENCE WITH LEITCH MILL CREEK	2002
TENNESSEE RIVER	HOLLY BRANCH	701211	TISHOMINGO	6030005	Fish & Wildlife	Biological Impairment	4/17/2020	NEAR IUKA FROM HEADWATERS TO MOUTH AT CEDAR CREEK	2006
TENNESSEE RIVER	LITTLE CRIPPLE DEER CREEK	701412	TISHOMINGO	6030006	Fish & Wildlife	Biological Impairment	6/23/2017	NEAR TISHOMINGO FROM HEADWATERS TO CONFLUENCE WITH CRIPPLE DEER CREEK	2002

TOMBIGBEE RIVER	ALAMUCHEE CREEK	818311	LAUDERDALE	3160202	Fish & Wildlife	Biological Impairment	6/23/2024	FROM HEADWATERS TO CONFLUENCE WITH LITTLE ALAMUCHEE CREEK	2010
TOMBIGBEE RIVER	ALAMUCHEE CREEK	818411	LAUDERDALE	3160202	Fish & Wildlife	Biological Impairment	6/23/2024	FROM LITTLE ALAMUCHEE CREEK TO MS/AL STATE LINE	2010
TOMBIGBEE RIVER	ASH CREEK	816012	NOXUBEE	3160108	Fish & Wildlife	Biological Impairment	6/23/2024	FROM HEADWATERS TO MOUTH AT NOXUBEE RIVER	2010
TOMBIGBEE RIVER	BOGUEGABA CREEK	802711	LEE, ITAWAMBA, MONROE	3160101	Fish & Wildlife	Biological Impairment	4/1/2025	AT RICHMOND FROM HEADWATERS TO MOUTH AT BOGUEFALA CREEK	2012
TOMBIGBEE RIVER	BROWNING CREEK	812913	OKTIBBEHA, NOXUBEE	3160108	Fish & Wildlife	Biological Impairment	4/1/2021	FROM HEADWATERS TO MOUTH AT NOXUBEE RIVER	2008
TOMBIGBEE RIVER	BUTTAHATCHEE RIVER	806711	MONROE	3160103	Fish & Wildlife	pH	4/1/2025	NEAR GREENWOOD SPRINGS FROM CONFLUENCE WITH SIPSEY CREEK TO THE MWS 8068 BOUNDARY NEAR THE CONFLUENCE WITH ALSUP CREEK	2012
TOMBIGBEE RIVER	CANE CREEK	807411	CHICKASAW, CLAY	3160104	Fish & Wildlife	Biological Impairment	6/23/2024	FROM HEADWATERS TO MOUTH AT HOULKA CREEK	2010
TOMBIGBEE RIVER	CHICO CREEK	820912	CHICKASAW	3160104	Fish & Wildlife	Biological Impairment	6/23/2024	NEAR HOUSTON FROM HEADWATERS TO MOUTH AT HOULKA CREEK	2010
TOMBIGBEE RIVER	CHINCHAHOMA CREEK	812811	OKTIBBEHA	3160108	Fish & Wildlife	Biological Impairment	4/1/2021	FROM HEADWATERS TO MOUTH AT NOXUBEE RIVER	2008
TOMBIGBEE RIVER	COONEWAH CREEK	805311	LEE	3160102	Fish & Wildlife	Biological Impairment	6/23/2024	FROM CONFLUENCE WITH LITTLE COONEWAH CREEK TO MOUTH AT TOWN CREEK	2010
TOMBIGBEE RIVER	COOPER CREEK	809913	LOWNDES	3160105	Fish & Wildlife	Biological Impairment	6/23/2017	NEAR STEEN FROM CONFLUENCE OF MAYHEW CREEK TO CONFLUENCE WITH YELLOW CREEK	2002
TOMBIGBEE RIVER	COWPENNA CREEK	805112	LEE	3160102	Fish & Wildlife	Biological Impairment	4/1/2025	NEAR PLANTERSVILLE FROM HEADWATERS TO MOUTH AT TOWN CREEK	2012
TOMBIGBEE RIVER	FULLER CREEK	804112	MONROE, CLAY	3160104	Fish & Wildlife	Biological Impairment	4/1/2025	NEAR WEST POINT FROM HEADWATERS TO MOUTH AT TOWN CREEK	2012
TOMBIGBEE RIVER	GREENWOOD CREEK	802611	LEE, ITAWAMBA	3160101	Fish & Wildlife	Biological Impairment	6/23/2017	NEAR EVERGREEN FROM HEADWATERS TO BOGUE FALA	2002
TOMBIGBEE RIVER	HOLLIS CREEK	812211	OKTIBBEHA	3160108	Fish & Wildlife	Total Nitrogen	6/23/2017	NEAR STARKVILLE FROM HEADWATERS TO THE NOXUBEE RIVER	2002
TOMBIGBEE RIVER	HOLLIS CREEK	812211	OKTIBBEHA	3160108	Fish & Wildlife	Total Phosphorus	6/23/2017	NEAR STARKVILLE FROM HEADWATERS TO THE NOXUBEE RIVER	2002
TOMBIGBEE RIVER	LITTLE BROWN CREEK	800611	PRENTISS	3160101	Fish & Wildlife	Biological Impairment	6/23/2017	NEAR MARIETTA FROM HEADWATERS TO MWS 8007 BOUNDARY	2002
TOMBIGBEE RIVER	LITTLE BROWN CREEK	800712	PRENTISS	3160101	Fish & Wildlife	Biological Impairment	6/23/2017	FROM MWS 8006 TO CONFLUENCE WITH BIG BROWN CREEK	2002
TOMBIGBEE RIVER	LONG BRANCH	808512	OKTIBBEHA	3160104	Fish & Wildlife	Biological Impairment	6/23/2017	NEAR STARKVILLE FROM HEADWATERS TO TRIM CANE CREEK	2002
TOMBIGBEE RIVER	LONG CREEK	807612	CHICKASAW, CLAY	3160104	Fish & Wildlife	Biological Impairment	6/23/2024	FROM HEADWATERS TO MOUTH AT HOULKA CREEK	2010
TOMBIGBEE RIVER	LUXAPALLILA CREEK	821611	LOWNDES	3160103	Fish & Wildlife	pH	4/1/2025	AT STEENS: FROM ALABAMA STATE LINE (INCLUDING TRIBUTARY) TO CONFLUENCE WITH YELLOW CREEK	2012
TOMBIGBEE RIVER	MOORE CREEK	819611	LOWNDES	3160101	Fish & Wildlife	Biological Impairment	6/23/2017	AT COLUMBUS FROM HEADWATERS TO THE TOMBIGBEE RIVER	2002
TOMBIGBEE RIVER	OAK SLUSH CREEK	819612	LOWNDES	3160101	Fish & Wildlife	Biological Impairment	6/23/2017	NEAR COLUMBUS FROM HEADWATERS TO THE TEN-TOM WATERWAY	2002

TOMBIGBEE RIVER	OKEELALA CREEK	801011	PRENTISS, LEE	3160101	Fish & Wildlife	Biological Impairment	6/23/2024	FROM HEADWATERS TO MOUTH AT TWENTYMILE CREEK	2010
TOMBIGBEE RIVER	OSBORNE CREEK	800912	PRENTISS	3160101	Fish & Wildlife	Biological Impairment	6/23/2024	FROM HEADWATERS TO MOUTH AT TWENTYMILE CREEK	2010
TOMBIGBEE RIVER	RED BUD CREEK	800312	TISHOMINGO, PRENTISS	3160101	Fish & Wildlife	Biological Impairment	6/23/2017	NEAR BELMONT FROM HEADWATERS TO THE TEN-TOM WATERWAY	2002
TOMBIGBEE RIVER	ROBERTS BRANCH	805912	LEE	3160102	Fish & Wildlife	Biological Impairment	6/23/2017	AT NETTLETON FROM HEADWATERS TO CONFLUENCE WITH COWPENA CREEK	2002
TOMBIGBEE RIVER	ROCK CREEK	800211	TISHOMINGO, PRENTISS	3160101	Fish & Wildlife	Biological Impairment	6/23/2017	NEAR BELMONT FROM HEADWATERS TO THE TEN-TOM WATERWAY	2002
TOMBIGBEE RIVER	SAND CREEK	804811	LEE	3160102	Fish & Wildlife	Biological Impairment	6/23/2024	FROM HEADWATERS TO MOUTH AT MUD CREEK	2010
TOMBIGBEE RIVER	SHAW CREEK	812313	OKTIBBEHA	3160108	Fish & Wildlife	Biological Impairment	4/1/2021	FROM HEADWATERS TO MOUTH AT NOXUBEE RIVER	2008
TOMBIGBEE RIVER	SHOTBAG CREEK	813012	LOWNDES, NOXUBEE	3160108	Fish & Wildlife	Biological Impairment	4/1/2021	FROM HEADWATERS TO MOUTH AT NOXUBEE RIVER	2008
TOMBIGBEE RIVER	SPRING CREEK	804213	MONROE	3160104	Fish & Wildlife	Biological Impairment	6/23/2024	NEAR VINTON FROM HEADWATERS TO CONFLUENCE WITH HANG KETTLE CREEK	2010
TOMBIGBEE RIVER	SPRING CREEK	809312	CLAY	3160104	Fish & Wildlife	Biological Impairment	6/23/2017	NEAR WESTPOINT FROM HEADWATERS TO TEN-TOM WATERWAY	2002
TOMBIGBEE RIVER	STANDING REED CREEK	808011	CHICKASAW, CLAY	3160104	Fish & Wildlife	Biological Impairment	6/23/2024	FROM HEADWATERS TO MOUTH AT LITTLE CANE CREEK	2010
TOMBIGBEE RIVER	TOWN CREEK	808912	CLAY	3160104	Fish & Wildlife	Biological Impairment	6/23/2017	AT WEST POINT FROM HEADWATERS TO TIBBEE CREEK	2002
TOMBIGBEE RIVER	TOWN CREEK	820211	MONROE	3160102	Fish & Wildlife	pH	4/1/2025	NEAR NETTLETON: FROM CONFLUENCE WITH ROBERTS BRANCH AT MWS 8021 BOUNDARY TO CONFLUENCE WITH SHOAF CREEK	2012
TOMBIGBEE RIVER	TOWN CREEK	MS011T	MONROE	3160101	Fish & Wildlife	Biological Impairment	6/23/2017	NEAR STRONG FROM HEADWATERS TO MOUTH AT TEN-TOM WATERWAY	2002
TOMBIGBEE RIVER	TUBBALUBBA CREEK	805812	LEE, MONROE	3160102	Fish & Wildlife	Biological Impairment	4/17/2020	NEAR SHANNON FROM HEADWATERS TO MOUTH AT TALLINNENLA AND CHIWAPA CREEKS	2006
TOMBIGBEE RIVER	TULIP CREEK	804912	LEE	3160102	Fish & Wildlife	Biological Impairment	4/1/2025	AT TUPELO FROM HEADWATERS TO MOUTH AT TOWN CREEK	2012
TOMBIGBEE RIVER	UNNAMED TRIBUTARY TO CATALPA CREEK	809012	CLAY	3160104	Fish & Wildlife	Biological Impairment	4/17/2020	NEAR STEPHENS FROM HEADWATERS TO MOUTH AT CATAWPA CREEK	2006
TOMBIGBEE RIVER	UNNAMED TRIBUTARY TO GILMER CREEK	810412	LOWNDES	3160106	Fish & Wildlife	Biological Impairment	4/17/2020	NEAR ARTESIA FROM HEADWATERS TO MOUTH AT GILMER CREEK	2006
TOMBIGBEE RIVER	WET WATER CREEK	813812	NOXUBEE	3160108	Fish & Wildlife	Biological Impairment	6/23/2017	NEAR BROOKSVILLE FROM HEADWATERS TO NOXUBEE RIVER	2002
TOMBIGBEE RIVER	WOLF CREEK	803412	MONROE	3160101	Fish & Wildlife	Biological Impairment	6/23/2024	FROM HEADWATERS TO MOUTH AT MATTUBBY CREEK	2010
TOMBIGBEE RIVER	WOLF CREEK	818811	PRENTISS	3160101	Fish & Wildlife	Biological Impairment	6/23/2024	FROM HEADWATERS TO MOUTH AT TWENTYMILE CREEK	2010
TOMBIGBEE RIVER	YELLOW CREEK	813211	WINSTON, NOXUBEE	3160108	Fish & Wildlife	Biological Impairment	6/23/2017	NEAR BETHEDEN FROM HEADWATERS TO THE NOXUBEE RIVER	2002

2012 DRAFT Mississippi
Section 303(d) List of Impaired Water Bodies

YAZOO RIVER	BEAR BAYOU	951412	SUNFLOWER	8030207	Fish & Wildlife	Organic Enrichment / Low Dissolved Oxygen	6/23/2024	FROM HEADWATERS TO MOUTH AT QUIVER RIVER	2010
YAZOO RIVER	BEARTAIL CREEK	909712	TATE	8030204	Fish & Wildlife	Biological Impairment	6/23/2024	FROM CONFLUENCE WITH UNNAMED TRIBUTARY NEAR MWS BOUNDARY 9096 TO MOUTH AT COLDWATER RIVER	2010
YAZOO RIVER	BEAVER BAYOU	951212	SUNFLOWER	8030207	Fish & Wildlife	Organic Enrichment / Low Dissolved Oxygen	4/1/2025	FROM HEADWATERS TO MOUTH AT MOUND BAYOU	2012
YAZOO RIVER	BIG BOGUE	917311	MONTGOMERY, GRENADA	8030205	Fish & Wildlife	Biological Impairment	6/23/2017	NEAR DUCK HILL FROM HEADWATERS TO CONFLUENCE WITH WILKINS CREEK	2002
YAZOO RIVER	BLACK CREEK	921713	HOLMES	8030206	Fish & Wildlife	Biological Impairment	6/23/2024	FROM CONFLUENCE WITH TARREY CREEK NEAR MWS 9215 BOUNDARY TO CONFLUENCE WITH HARLAND CREEK	2010
YAZOO RIVER	BLISS CREEK	923411	WARREN	8030208	Fish & Wildlife	Biological Impairment	6/23/2017	NEAR REDWOOD FROM HEADWATERS TO THE YAZOO RIVER	2002
YAZOO RIVER	BUTPUTTER CREEK	914511	GRENADA	8030205	Fish & Wildlife	Biological Impairment	6/23/2017	NEAR GRENADA FROM HEADWATERS TO THE GRENADA LAKE FLOOD POOL	2002
YAZOO RIVER	CANE CREEK	916811	GRENADA	8030205	Recreation	Pathogens	4/1/2021	FROM HEADWATERS TO MOUTH AT YALOBUSHA RIVER	2008
YAZOO RIVER	COWPEN CREEK	915312	CALHOUN	8030205	Fish & Wildlife	Biological Impairment	4/1/2021	NEAR BANNER FROM HEADWATERS TO THE SKUNA RIVER	2008
YAZOO RIVER	CYPRESS CREEK	902111	LAFAYETTE	8030201	Fish & Wildlife	Biological Impairment	4/17/2020	NEAR ETTA FROM MWS BOUNDARY 9020 TO MWS 9019 BOUNDARY	2006
YAZOO RIVER	FANNEGUSHA CREEK	920911	HOLMES	8030206	Fish & Wildlife	Biological Impairment	6/23/2017	NEAR ITUMA FROM CARROLL/ HOLMES COUNTY LINE TO MWS 9211 BOUNDARY	2002
YAZOO RIVER	FOURMILE BRANCH	907211	LAFAYETTE	8030203	Fish & Wildlife	Biological Impairment	4/1/2021	NEAR OXFORD FROM HEADWATERS TO MOUTH AT YELLOW LEAF CREEK	2008
YAZOO RIVER	HUBBARD CREEK	918111	TALLAHATCHIE	8030205	Fish & Wildlife	Biological Impairment	4/1/2021	NEAR TANDY FROM HEADWATERS TO SOUTHLAKE BAYOU	2008
YAZOO RIVER	HUDSON CREEK	904612	LAFAYETTE	8030201	Fish & Wildlife	Biological Impairment	4/17/2020	NEAR SARDIS FROM HEADWATERS TO MOUTH AT CLEAR CREEK	2006
YAZOO RIVER	JAMES WOLF CREEK	910611	TATE	8030204	Fish & Wildlife	Biological Impairment	6/23/2024	FROM HEADWATERS TO 9105 MWS BOUNDARY	2010
YAZOO RIVER	JAMES WOLF CREEK	MS305M1	TATE	8030204	Fish & Wildlife	Biological Impairment	6/23/2017	NEAR LOOXAHOMA: FROM HEADWATERS BETWEEN AIKEN AND TYRO TO MOUTH AT HICKAHALA CREEK	2002
YAZOO RIVER	JASPER CREEK	900511	UNION	8030201	Fish & Wildlife	Biological Impairment	4/17/2020	NEAR NEW ALBANY FROM HEADWATERS TO MOUTH AT LITTLE TALLAHATCHIE RIVER	2006
YAZOO RIVER	LEAD BAYOU	951211	BOLIVAR	8030207	Fish & Wildlife	Organic Enrichment / Low Dissolved Oxygen	6/23/2024	FROM HEADWATERS AT ENTERGY COOLING POND TO MOUTH AT HORSESHOE BAYOU	2010
YAZOO RIVER	LITTLE BOGUE	MS340LB	MONTGOMERY, GRENADA	8030205	Fish & Wildlife	Biological Impairment	4/17/2020	NEAR DUCK HILL FROM HEADWATERS TO BATUPAN BOGUE	2006
YAZOO RIVER	LITTLE COLDWATER CREEK	909112	MARSHALL	8030204	Fish & Wildlife	Biological Impairment	6/23/2024	FROM HEADWATERS TO CONFLUENCE WITH COLDWATER RIVER	2010
YAZOO RIVER	LITTLE TALLAHATCHIE RIVER	901711	UNION, LAFAYETTE	8030201	Fish & Wildlife	pH	4/1/2025	NEAR ETTA FROM CONFLUENCE WITH MUD CREEK TO MWS BOUNDARY 9019 NEAR THE HIGHWAY 30 BRIDGE	2012
YAZOO RIVER	LITTLE TALLAHATCHIE RIVER	MS228M	UNION, MARSHALL	8030201	Fish & Wildlife	Biological Impairment	6/23/2017	AT ETTA FROM CONFLUENCE WITH LAPPATUBBY CREEK TO WATERSHED 228 BOUNDARY	2002
YAZOO RIVER	LITTLE TOPASAW CREEK	913712	WEBSTER, CHICKASAW	8030205	Fish & Wildlife	Biological Impairment	6/23/2017	NEAR WOODLAND FROM HEADWATERS TO TOPASAW CREEK	2002
YAZOO RIVER	LYON CREEK	901111	PONTOTOC	8030201	Fish & Wildlife	Biological Impairment	4/17/2020	NEAR PONTOTOC FROM HEADWATERS TO CONFLUENCE WITH LAPPATUBBY CREEK	2006

YAZOO RIVER	MERIDIAN CREEK	913312	CALHOUN	8030205	Fish & Wildlife	Biological Impairment	4/1/2025	NEAR VARDAMAN FROM HEADWATERS TO MOUTH AT YALOBUSHA RIVER	2012
YAZOO RIVER	MOORE BAYOU	MS274M	COAHOMA	8030202	Fish & Wildlife	Biological Impairment	4/1/2021	AT JONESTOWN FROM HEADWATERS TO CONFLUENCE WITH CASSIDY BAYOU	2008
YAZOO RIVER	NORTH TIPPAH CREEK	902512	TIPPAH	8030201	Fish & Wildlife	Biological Impairment	4/1/2025	NEAR RIPLEY FROM HEADWATERS TO MOUTH AT TIPPAH RIVER	2012
YAZOO RIVER	OKACHICKIMA CREEK	916211	YALOBUSHA	8030205	Fish & Wildlife	Biological Impairment	6/23/2017	NEAR HARDY FROM HEADWATERS TO GRENADA LAKE FLOOD POOL	2002
YAZOO RIVER	OKANNATIE CREEK	900911	UNION	8030201	Fish & Wildlife	Biological Impairment	4/1/2025	AT ECRU FROM CONFLUENCE OF POPULAR SPRINGS CREEK TO MWS 9010 BOUNDARY AT HIGHWAY 15 BRIDGE	2012
YAZOO RIVER	PERRY CREEK	922912	YAZOO	8030207	Fish & Wildlife	Biological Impairment	4/17/2020	NEAR OIL CITY FROM HEADWATERS TO MOUTH AT O'NEAL CREEK	2006
YAZOO RIVER	SHELTON CREEK	908411	TALLAHATCHIE, PANOLA	8030203	Fish & Wildlife	Biological Impairment	6/23/2017	NEAR CROWDER FROM HEADWATERS TO THE YOCONA RIVER	2002
YAZOO RIVER	SKUNA RIVER CANAL	MS332S	PONTOTOC, CHICKASAW, CALHOUN	8030205	Fish & Wildlife	Biological Impairment	6/23/2017	NEAR BUCKHORN FROM HEADWATERS TO MWS 333 BOUNDARY	2002
YAZOO RIVER	SWIFTWATER BYOU	952811	WASHINGTON	8030209	Fish & Wildlife	Organic Enrichment / Low Dissolved Oxygen	4/1/2025	FROM BLACK BAYOU TO UNNAMED CANAL TO GRANICUS BAYOU	2012
YAZOO RIVER	TURKEY BAYOU	951611	LEFLORE	8030207	Fish & Wildlife	Specific Conductivity	4/1/2025	NEAR ITTA BENA FROM LAKE HENRY TO MOUTH AT QUIVER RIVER	2012
YAZOO RIVER	TURKEY CREEK	MS336TE	YALOBUSHA	8030205	Recreation	Pathogens	4/17/2020	NEAR COFFEEVILLE FROM HEADWATERS TO GRENADA LAKE FLOOD POOL	2006
YAZOO RIVER	UNNAMED TRIBUTARY TO LITTLE TALLAHATCHIE RIVER	901713	UNION	8030201	Fish & Wildlife	Biological Impairment	6/23/2017	NEAR PINEDALE FROM HEADWATERS TO THE CONFLUENCE WITH UNNAMED TRIBUTARY JUST DOWNSTREAM OF COUNTY ROAD 46	2002
YAZOO RIVER	WHITES CREEK	911911	DE SOTO, TUNICA	8030204	Fish & Wildlife	Biological Impairment	6/23/2017	NEAR PRICHARD FROM HEADWATERS TO THE LAKE COMORANT BAYOU	2002
YAZOO RIVER	WILD BILL BAYOU	951411	SUNFLOWER	8030207	Fish & Wildlife	Organic Enrichment / Low Dissolved Oxygen	6/23/2024	FROM HEADWATERS TO MOUTH AT QUIVER RIVER	2010

Mississippi 2012 Section 303(d) List of Impaired Water Bodies

REFERENCES

MDEQ. 2003. *Development and Application of the Mississippi Benthic Index of Stream Quality (M-BISQ)*. Office of Pollution Control.

MDEQ. 2007. *Mississippi 2006 Section 303(d) List of Impaired Water Bodies*. Office of Pollution Control.

MDEQ. 2008. *Mississippi 2008 Section 303(d) List of Impaired Water Bodies*. Office of Pollution Control.

MDEQ. 2009. *MISSISSIPPI CALM (Consolidated Assessment and Listing Methodology)2008 Assessment and Listing Cycle*. Office of Pollution Control.

MDEQ. 2006. *NRCS State Watershed Map and Table*. Office of Pollution Control.

MDEQ. 2003. *State of Mississippi Water Quality Criteria for Intrastate, Interstate and Coastal Waters*. Office of Pollution Control.

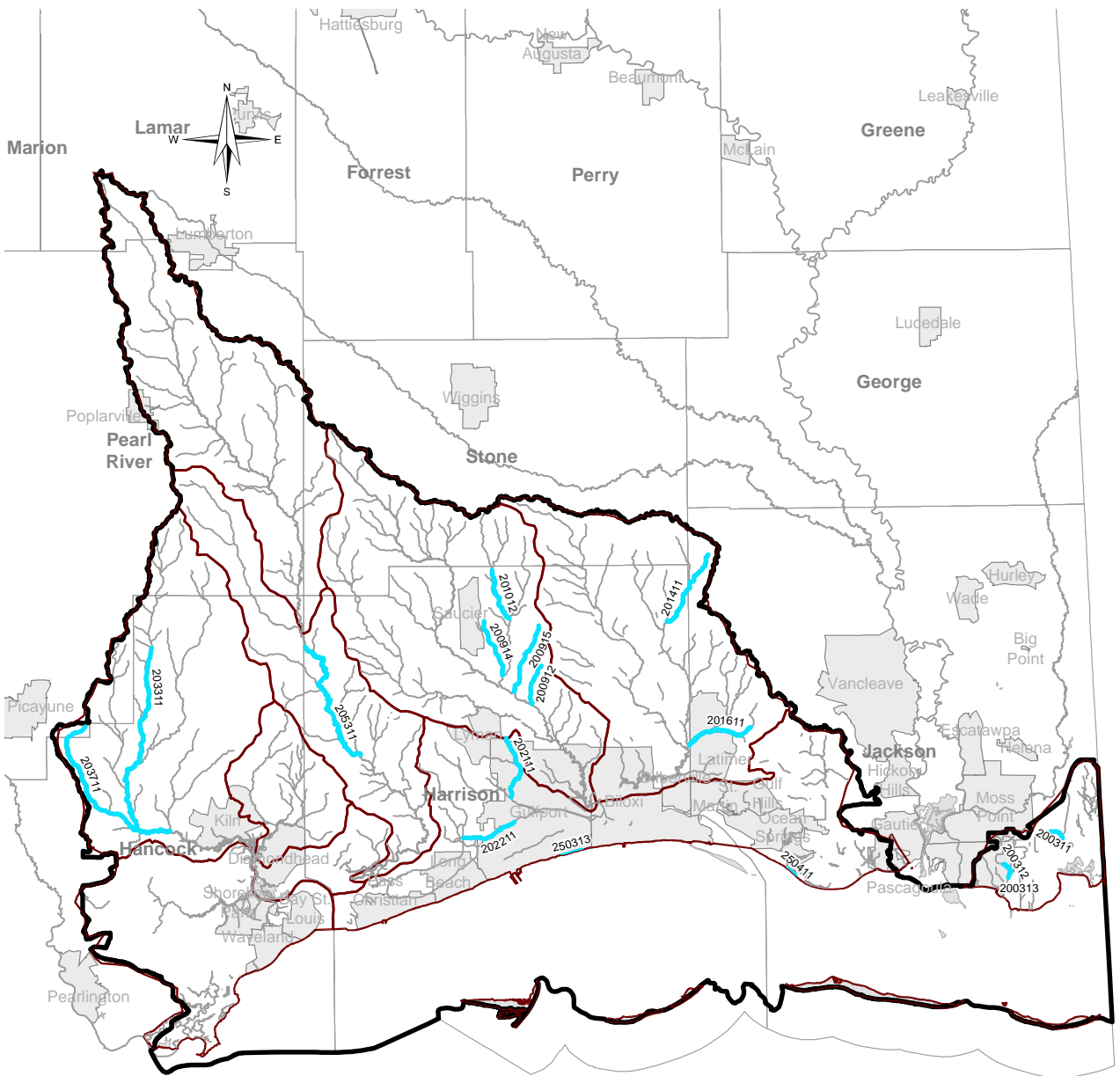
MDEQ. 2006. *USGS and MDEQ State 12 Digit Watershed Atlas*. Office of Pollution Control.

Mississippi 2012 Section 303(d) List of Impaired Water Bodies

Appendix A Atlas

Maps are included in Appendix A for each basin. Streams shown in blue are impaired streams. In some river basins, the maps were split into 8-digit Hydrologic Unit Codes to better fit the page. Basins with no current listings are not included.

Mississippi 2012 Section 303(d) List of Impaired Water Bodies



Monitored Waters

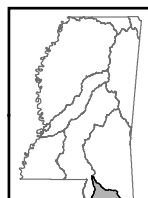
Coastal Streams Basin

This map produced by the Department of Environmental Quality (MDEQ), Office of Pollution Control, Surface Water Division, Standards, Modeling, and TMDL Branch on March 06, 2012.

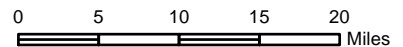
All map data is from the Mississippi Automated Resource Information System (MARIS) and MDEQ.

Map Projection: Mississippi Transverse Mercator

The Mississippi Department of Environmental Quality makes no warranties, expressed or implied, as to the accuracy, completeness, currentness, reliability, or suitability for any particular purpose, of the data contained on this map.

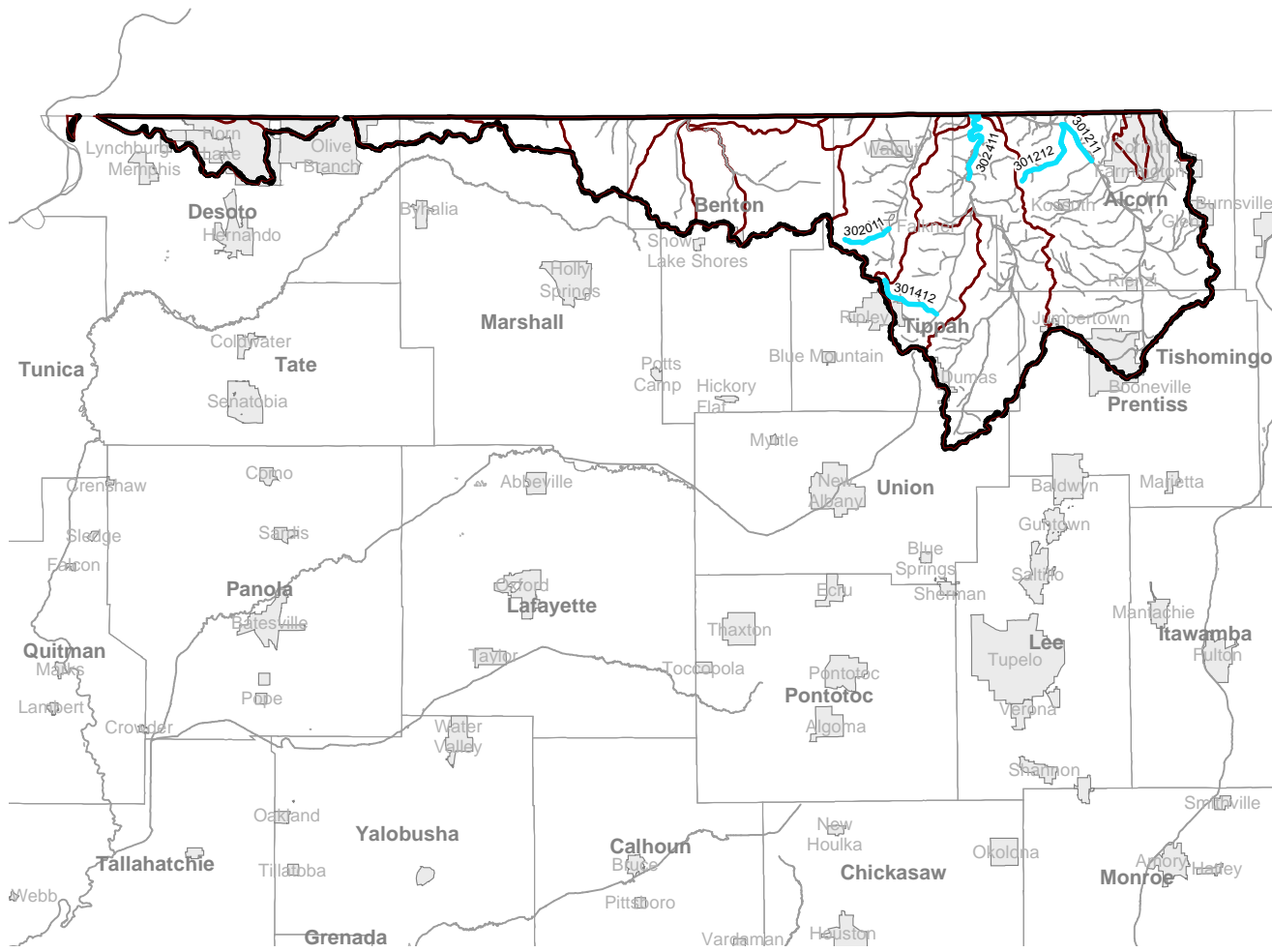
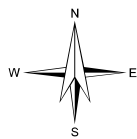


Mississippi Basins



Legend

- Monitored Stream
- Perennial Stream
- Waterbody
- Watershed
- Basin
- City
- County



Monitored Waters

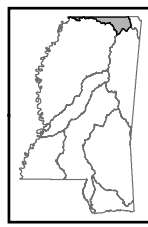
North Independent Streams Basin

This map produced by the Department of Environmental Quality (MDEQ), Office of Pollution Control, Surface Water Division, Standards, Modeling, and TMDL Branch on March 06, 2012.

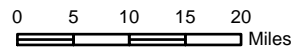
All map data is from the Mississippi Automated Resource Information System (MARIS) and MDEQ.

Map Projection: Mississippi Transverse Mercator

The Mississippi Department of Environmental Quality makes no warranties, expressed or implied, as to the accuracy, completeness, currentness, reliability, or suitability for any particular purpose, of the data contained on this map.

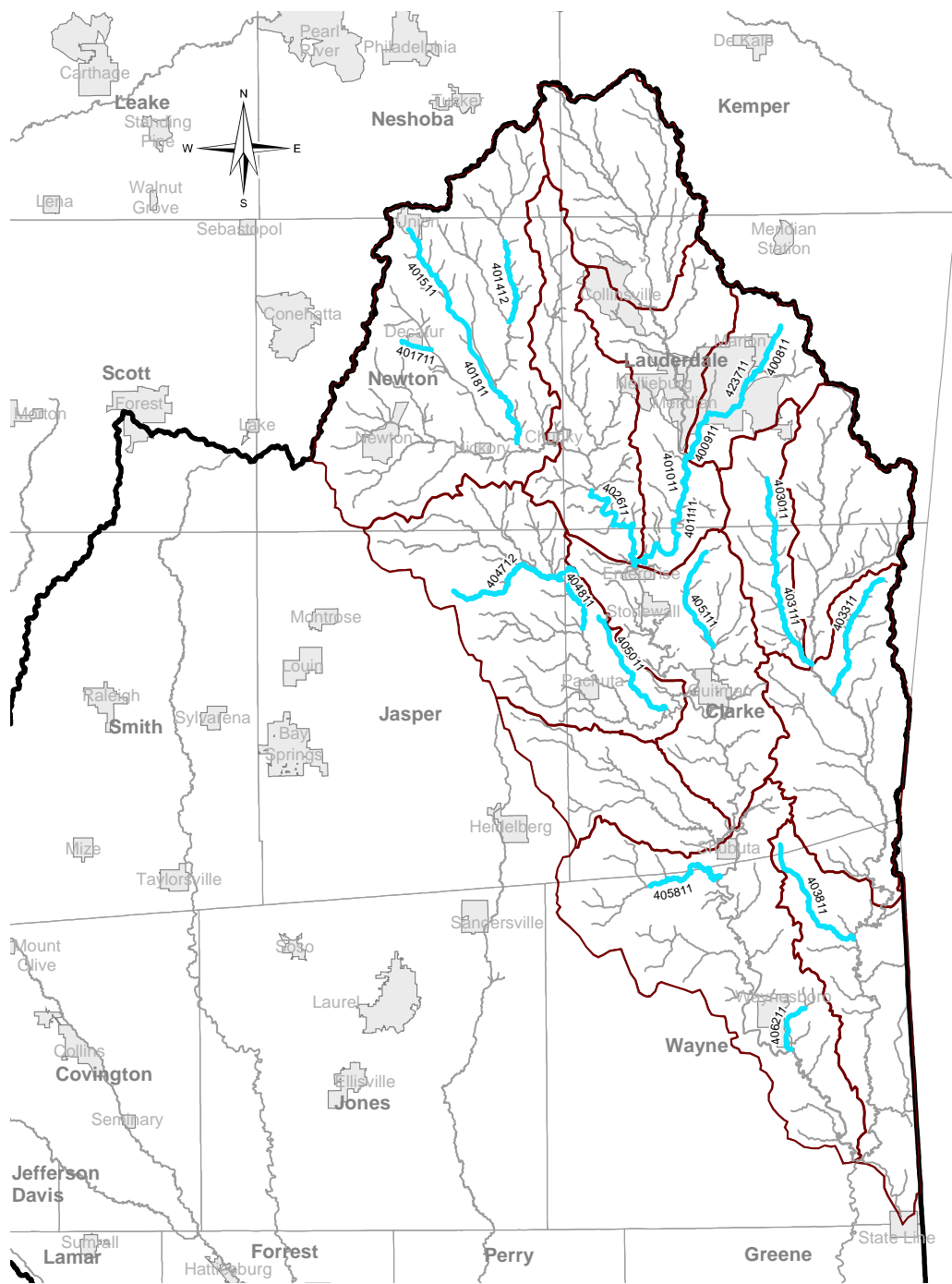


Mississippi Basins



Legend

- Monitored Stream
- Perennial Stream
- Waterbody
- Watershed
- Basin
- City
- County



Monitored Waters

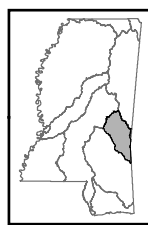
Pascagoula River Basin HUCs 03170001 and 03170002

This map produced by the Department of Environmental Quality (MDEQ), Office of Pollution Control, Surface Water Division, Standards, Modeling, and TMDL Branch on March 06, 2012.

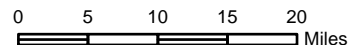
All map data is from the Mississippi Automated Resource Information System (MARIS) and MDEQ.

Map Projection: Mississippi Transverse Mercator








The Mississippi Department of Environmental Quality makes no warranties, expressed or implied, as to the accuracy, completeness, currentness, reliability, or suitability for any particular purpose, of the data contained on this map.



Mississippi Basins



Legend

-  Monitored Stream
-  Perennial Stream
-  Waterbody
-  Watershed
-  Basin
-  City
-  County



Monitored Waters

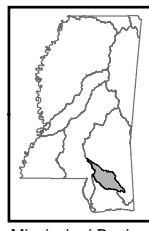
Pascagoula River Basin HUC 03170007

This map produced by the Department of Environmental Quality (MDEQ), Office of Pollution Control, Surface Water Division, Standards, Modeling, and TMDL Branch on March 06, 2012.

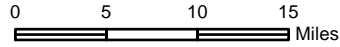
All map data is from the Mississippi Automated Resource Information System (MARIS) and MDEQ.

Map Projection: Mississippi Transverse Mercator

The Mississippi Department of Environmental Quality makes no warranties, expressed or implied, as to the accuracy, completeness, currentness, reliability, or suitability for any particular purpose, of the data contained on this map.

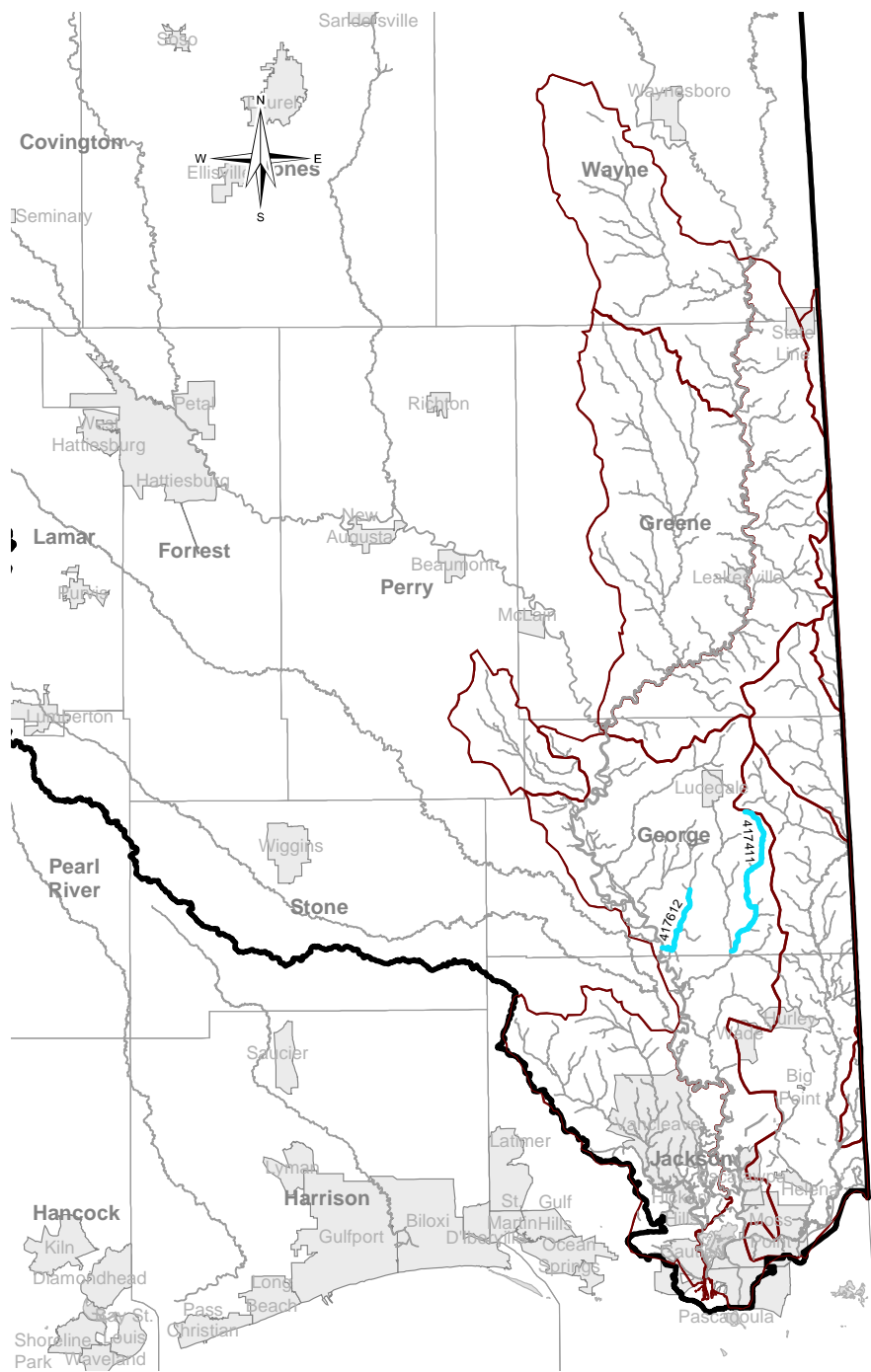


Mississippi Basins



Legend

- Monitored Stream
- Perennial Stream
- Waterbody
- Watershed
- Basin
- City
- County



Monitored Waters

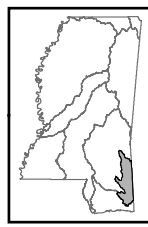
Pascagoula River Basin HUCs 03170003, 03170006, and 03170008

This map produced by the Department of Environmental Quality (MDEQ), Office of Pollution Control, Surface Water Division, Standards, Modeling, and TMDL Branch on March 06, 2012.

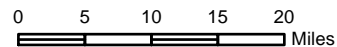
All map data is from the Mississippi Automated Resource Information System (MARIS) and MDEQ.

Map Projection: Mississippi Transverse Mercator

The Mississippi Department of Environmental Quality makes no warranties, expressed or implied, as to the accuracy, completeness, currentness, reliability, or suitability for any particular purpose, of the data contained on this map.

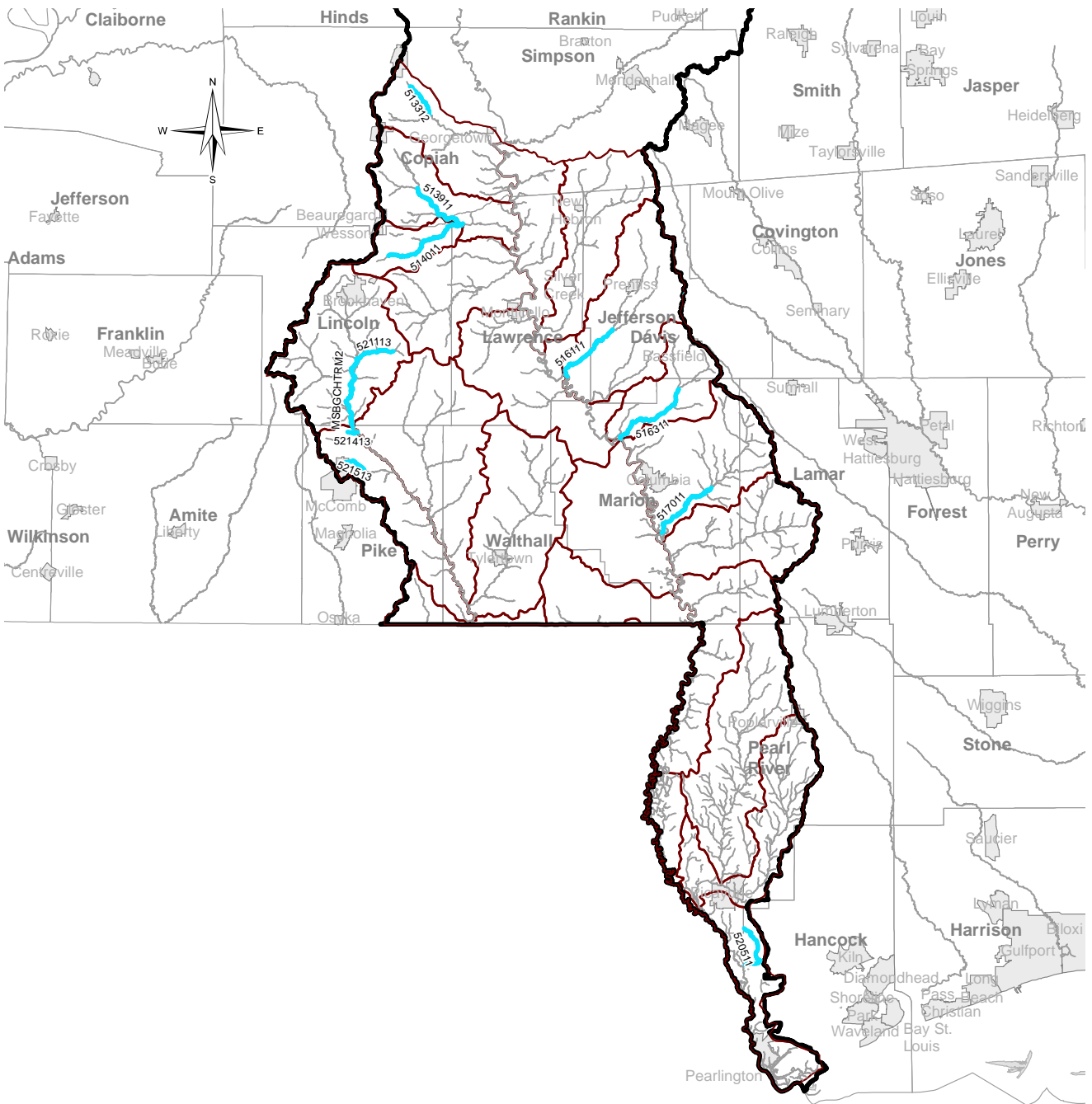


Mississippi Basins



Legend

- Monitored Stream
- Perennial Stream
- Waterbody
- Watershed
- Basin
- City
- County



Monitored Waters

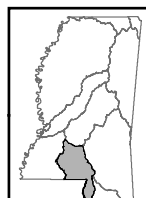
Pearl River Basin HUCs 03180003, 03180004, and 03180005

This map produced by the Department of Environmental Quality (MDEQ), Office of Pollution Control, Surface Water Division, Standards, Modeling, and TMDL Branch on March 06, 2012.

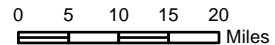
All map data is from the Mississippi Automated Resource Information System (MARIS) and MDEQ.

Map Projection: Mississippi Transverse Mercator

The Mississippi Department of Environmental Quality makes no warranties, expressed or implied, as to the accuracy, completeness, currentness, reliability, or suitability for any particular purpose, of the data contained on this map.

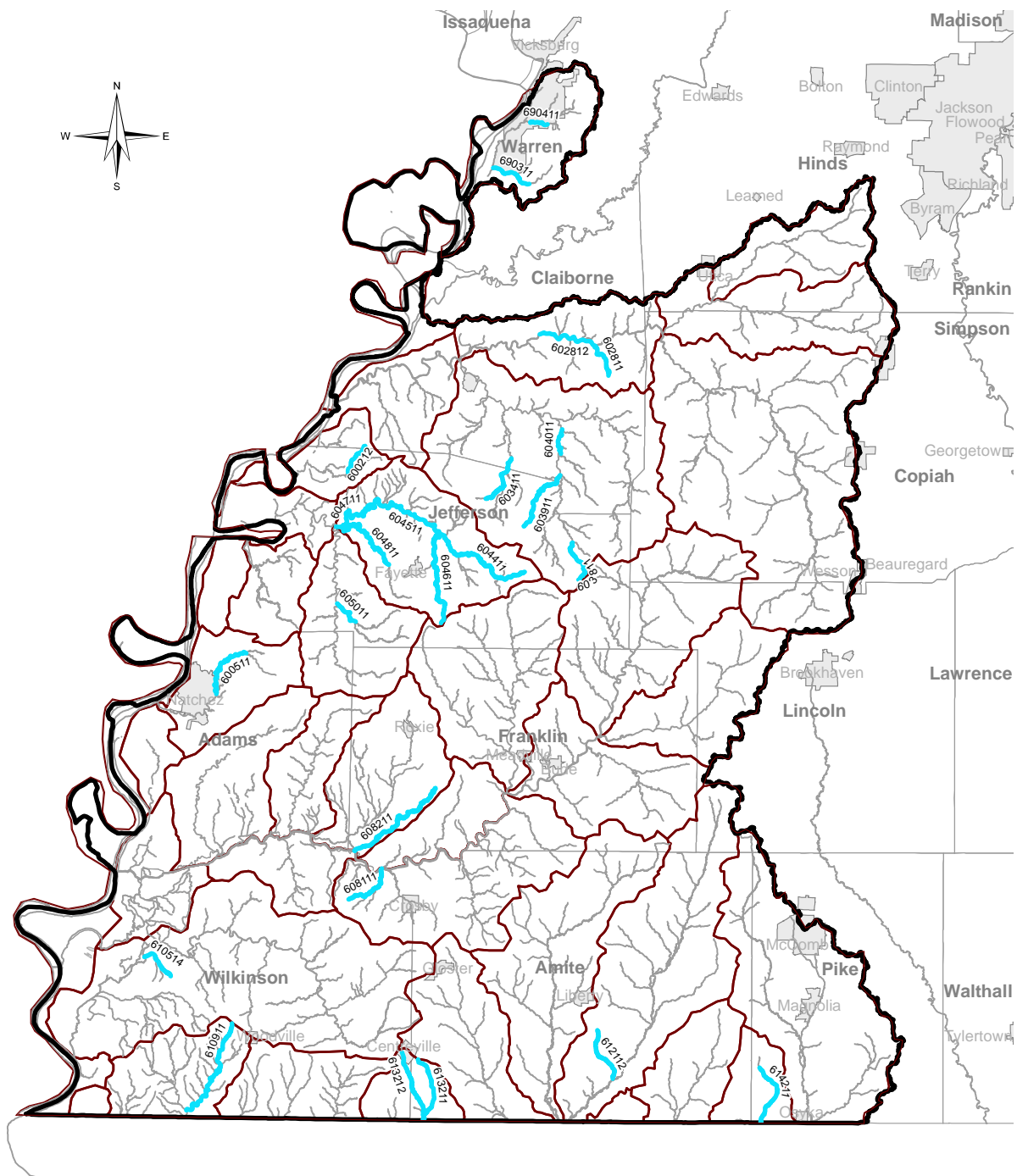


Mississippi Basins



Legend

- Monitored Stream
- Perennial Stream
- Waterbody
- Watershed
- Basin
- City
- County



Monitored Waters

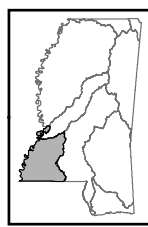
South Independent Streams/Lower Mississippi River Basins

This map produced by the Department of Environmental Quality (MDEQ), Office of Pollution Control, Surface Water Division, Standards, Modeling, and TMDL Branch on March 06, 2012.

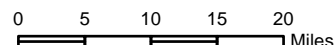
All map data is from the Mississippi Automated Resource Information System (MARIS) and MDEQ.

Map Projection: Mississippi Transverse Mercator

The Mississippi Department of Environmental Quality makes no warranties, expressed or implied, as to the accuracy, completeness, currentness, reliability, or suitability for any particular purpose, of the data contained on this map.

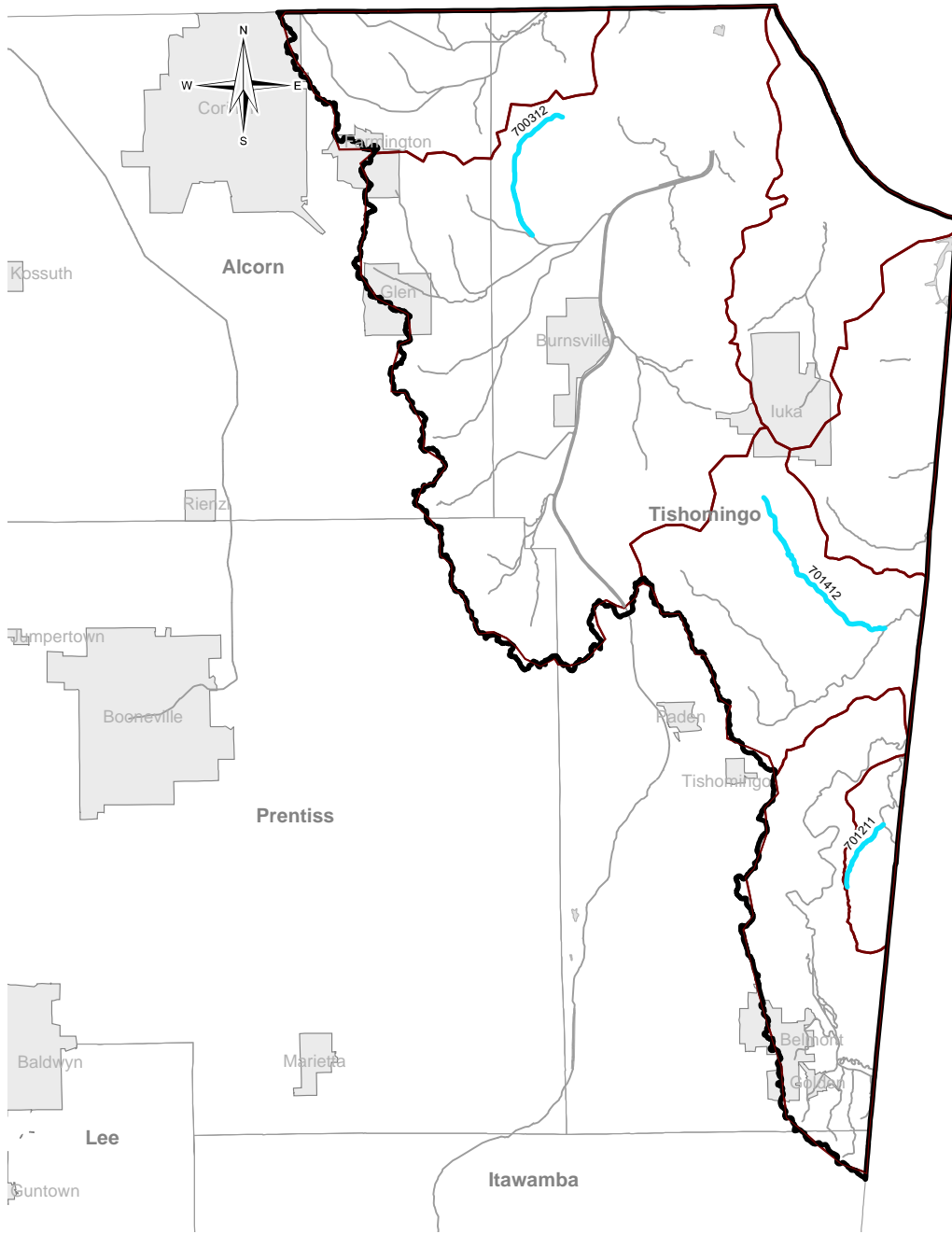


Mississippi Basins



Legend

- Monitored Stream
- Perennial Stream
- Waterbody
- Watershed
- Basin
- City
- County



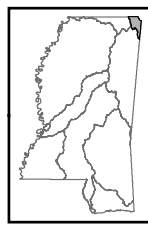
Monitored Waters Tennessee River Basin

This map produced by the Department of Environmental Quality (MDEQ), Office of Pollution Control, Surface Water Division, Standards, Modeling, and TMDL Branch on March 06, 2012.

All map data is from the Mississippi Automated Resource Information System (MARIS) and MDEQ.

Map Projection: Mississippi Transverse Mercator








The Mississippi Department of Environmental Quality makes no warranties, expressed or implied, as to the accuracy, completeness, currentness, reliability, or suitability for any particular purpose, of the data contained on this map.

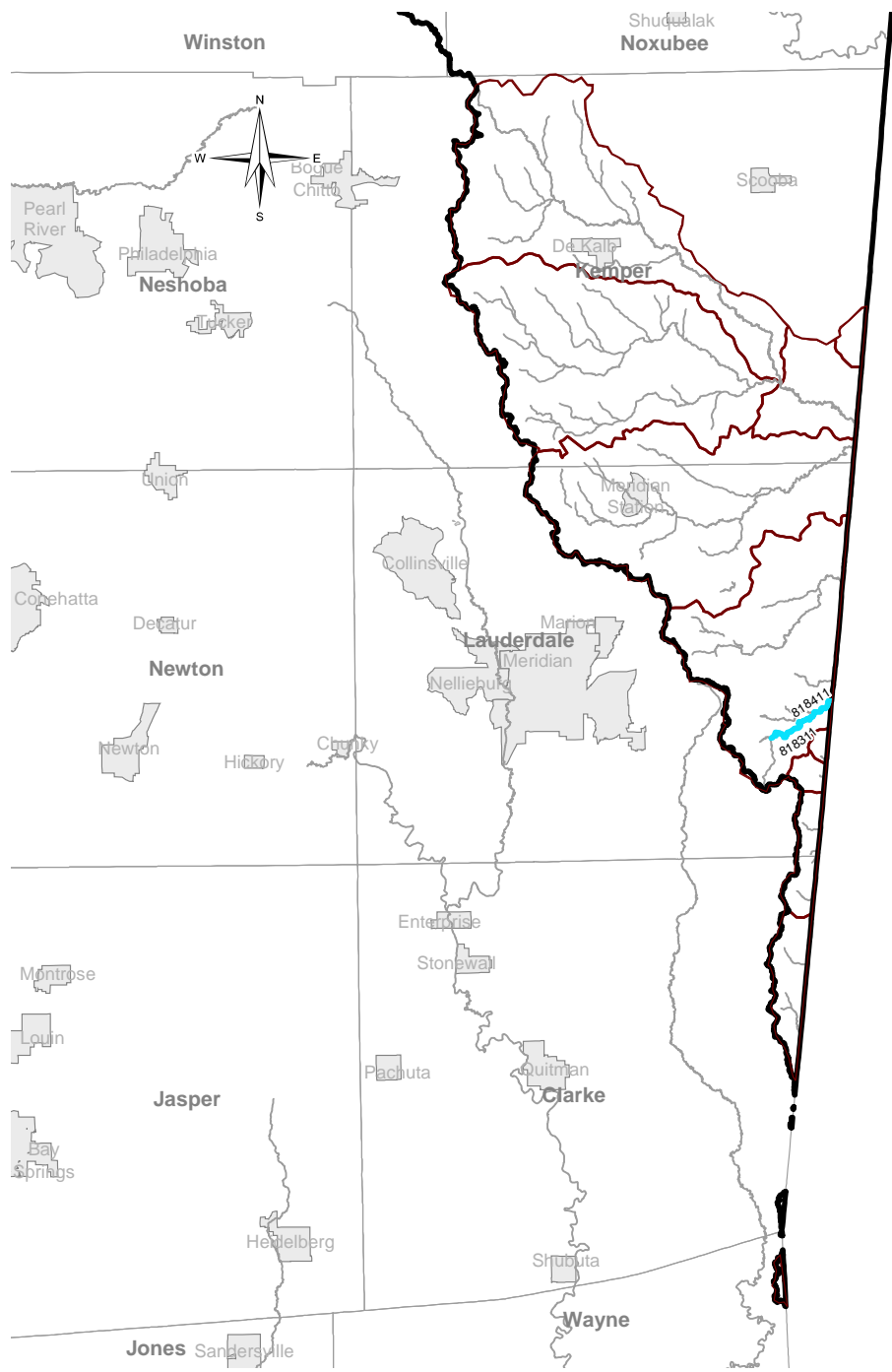


Mississippi Basins



Legend

-  Monitored Stream
-  Perennial Stream
-  Waterbody
-  Watershed
-  Basin
-  City
-  County



Monitored Waters

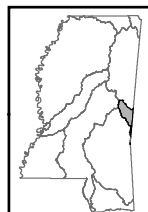
Tombigbee River Basin HUCs 03160201 and 03160202

This map produced by the Department of Environmental Quality (MDEQ), Office of Pollution Control, Surface Water Division, Standards, Modeling, and TMDL Branch on March 06, 2012.

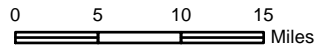
All map data is from the Mississippi Automated Resource Information System (MARIS) and MDEQ.

Map Projection: Mississippi Transverse Mercator

The Mississippi Department of Environmental Quality makes no warranties, expressed or implied, as to the accuracy, completeness, currentness, reliability, or suitability for any particular purpose, of the data contained on this map.

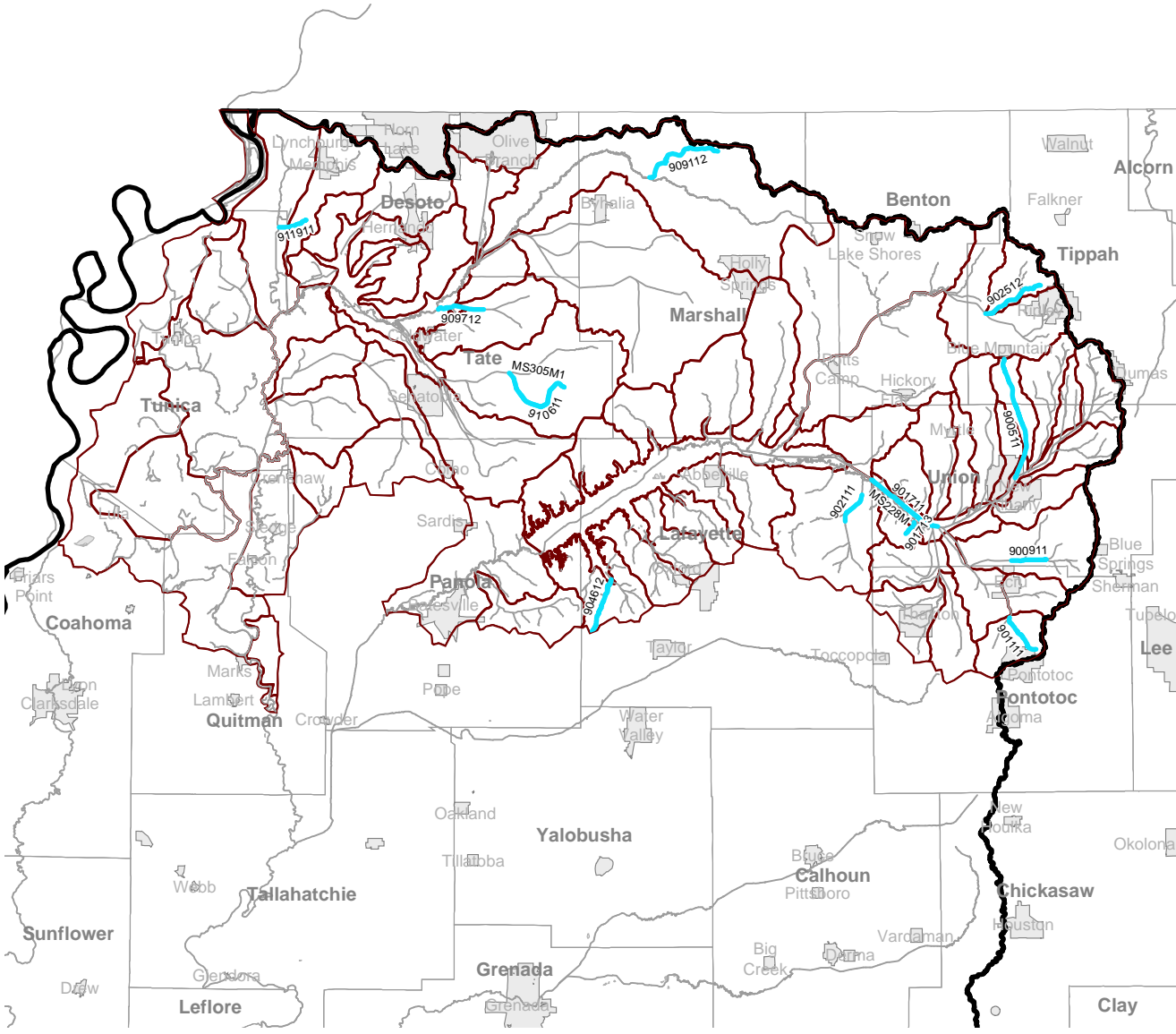
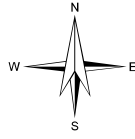


Mississippi Basins



Legend

- Monitored Stream
- Perennial Stream
- Waterbody
- Watershed
- Basin
- City
- County



Monitored Waters

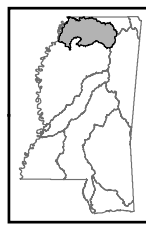
Yazoo/Upper Mississippi River Basin HUCs 08010100, 08020100, 08030201, and 08030204

This map produced by the Department of Environmental Quality (MDEQ), Office of Pollution Control, Surface Water Division, Standards, Modeling, and TMDL Branch on March 06, 2012.

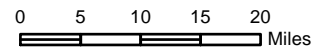
All map data is from the Mississippi Automated Resource Information System (MARIS) and MDEQ.

Map Projection: Mississippi Transverse Mercator

The Mississippi Department of Environmental Quality makes no warranties, expressed or implied, as to the accuracy, completeness, currentness, reliability, or suitability for any particular purpose, of the data contained on this map.

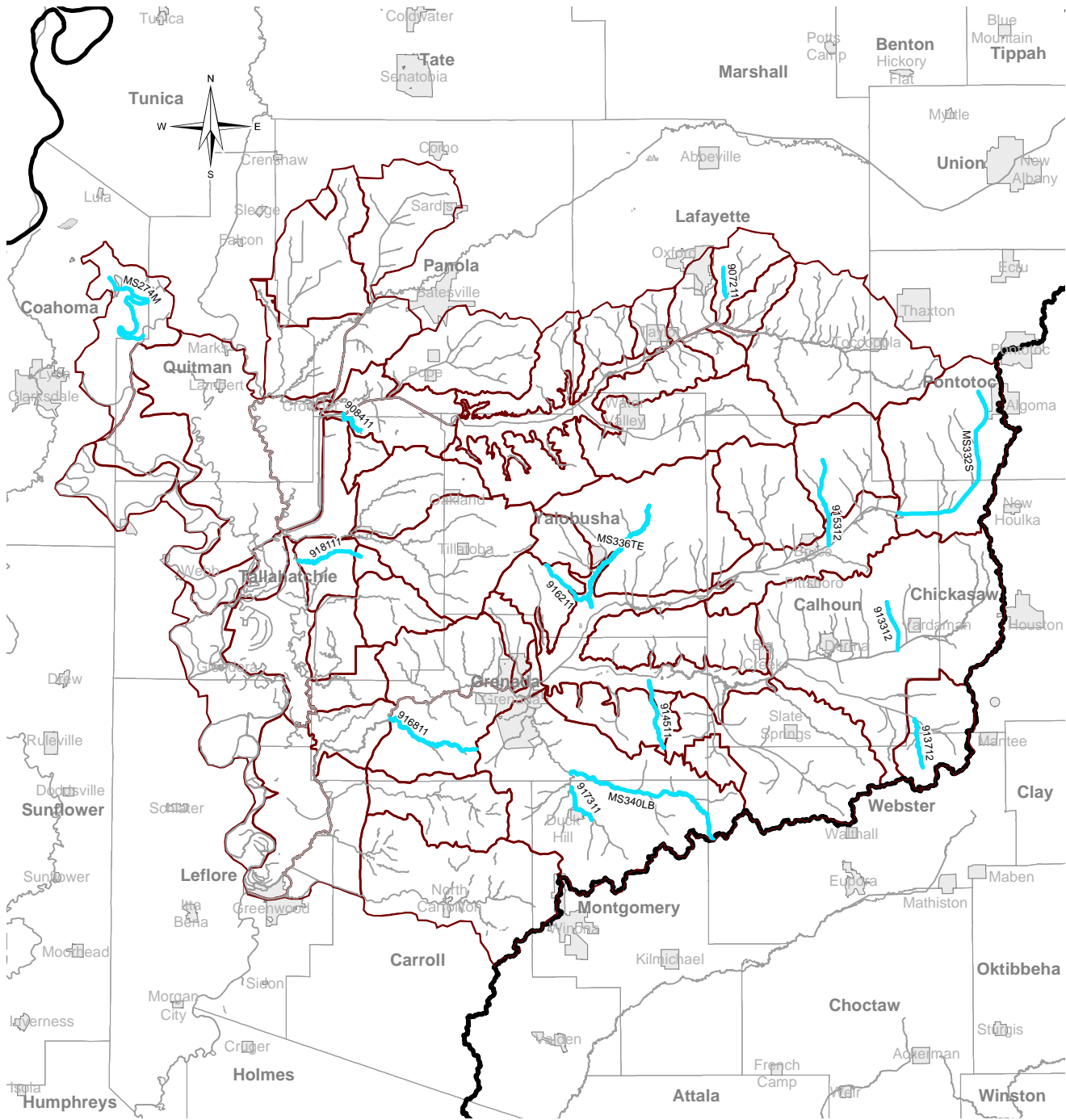


Mississippi Basins



Legend

- Monitored Stream
- Perennial Stream
- Waterbody
- Watershed
- Basin
- City
- County



Monitored Waters

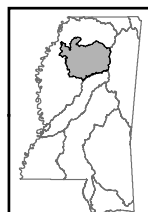
Yazoo River Basin HUCs 08030202, 08030203, and 08030205

This map produced by the Department of Environmental Quality (MDEQ), Office of Pollution Control, Surface Water Division, Standards, Modeling, and TMDL Branch on March 06, 2012.

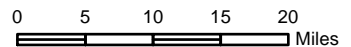
All map data is from the Mississippi Automated Resource Information System (MARIS) and MDEQ.

Map Projection: Mississippi Transverse Mercator

The Mississippi Department of Environmental Quality makes no warranties, expressed or implied, as to the accuracy, completeness, currentness, reliability, or suitability for any particular purpose, of the data contained on this map.

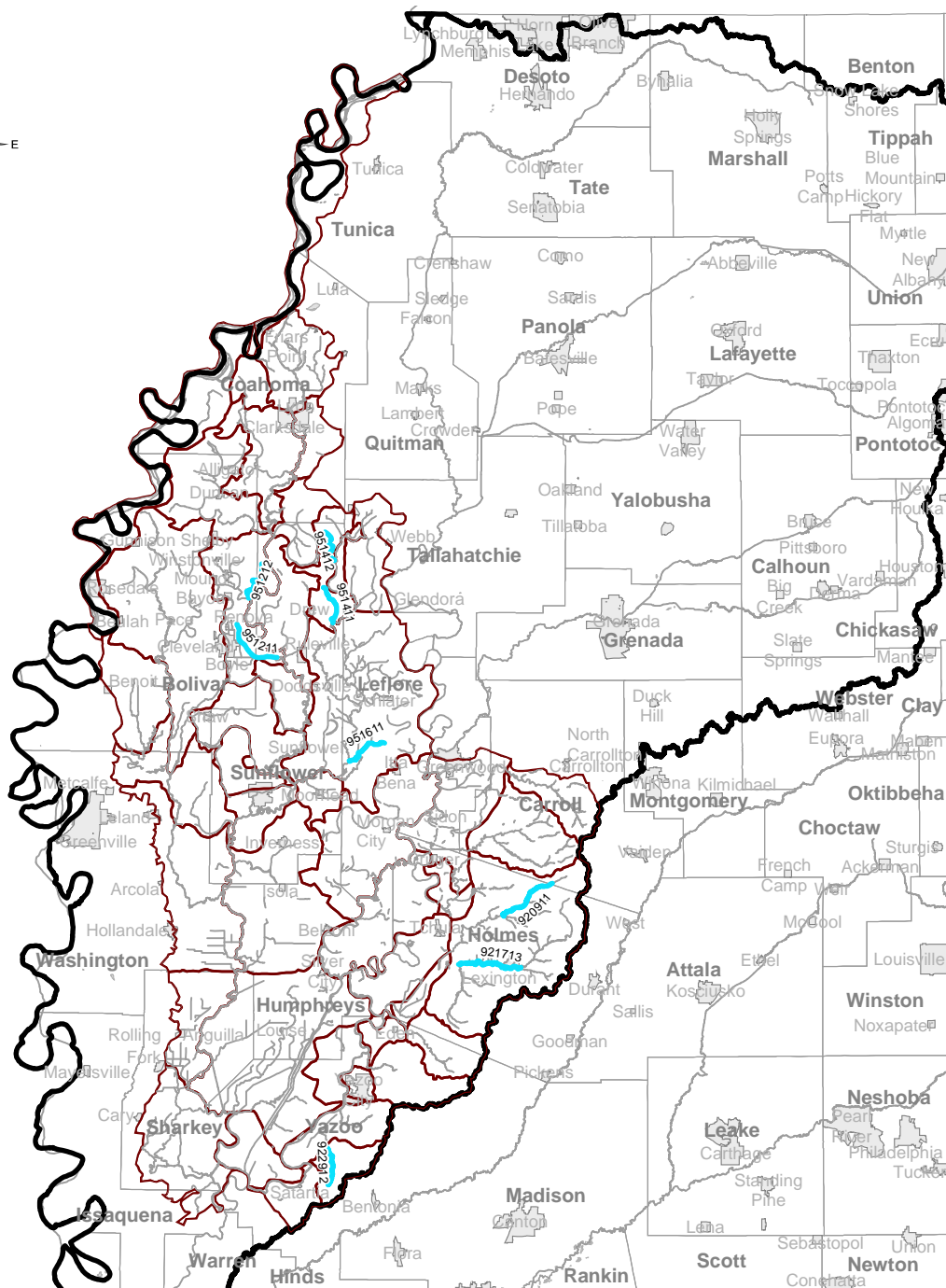
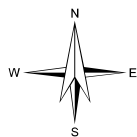


Mississippi Basins



Legend

- Monitored Stream
- Perennial Stream
- Waterbody
- Watershed
- Basin
- City
- County



Monitored Waters

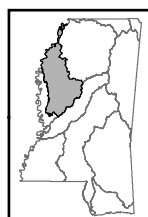
Yazoo/Upper Mississippi River Basin HUCs 08020100, 08030206, and 08030207

This map produced by the Department of Environmental Quality (MDEQ), Office of Pollution Control, Surface Water Division, Standards, Modeling, and TMDL Branch on March 06, 2012.

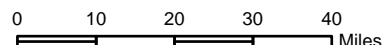
All map data is from the Mississippi Automated Resource Information System (MARIS) and MDEQ.

Map Projection: Mississippi Transverse Mercator

The Mississippi Department of Environmental Quality makes no warranties, expressed or implied, as to the accuracy, completeness, currentness, reliability, or suitability for any particular purpose, of the data contained on this map.

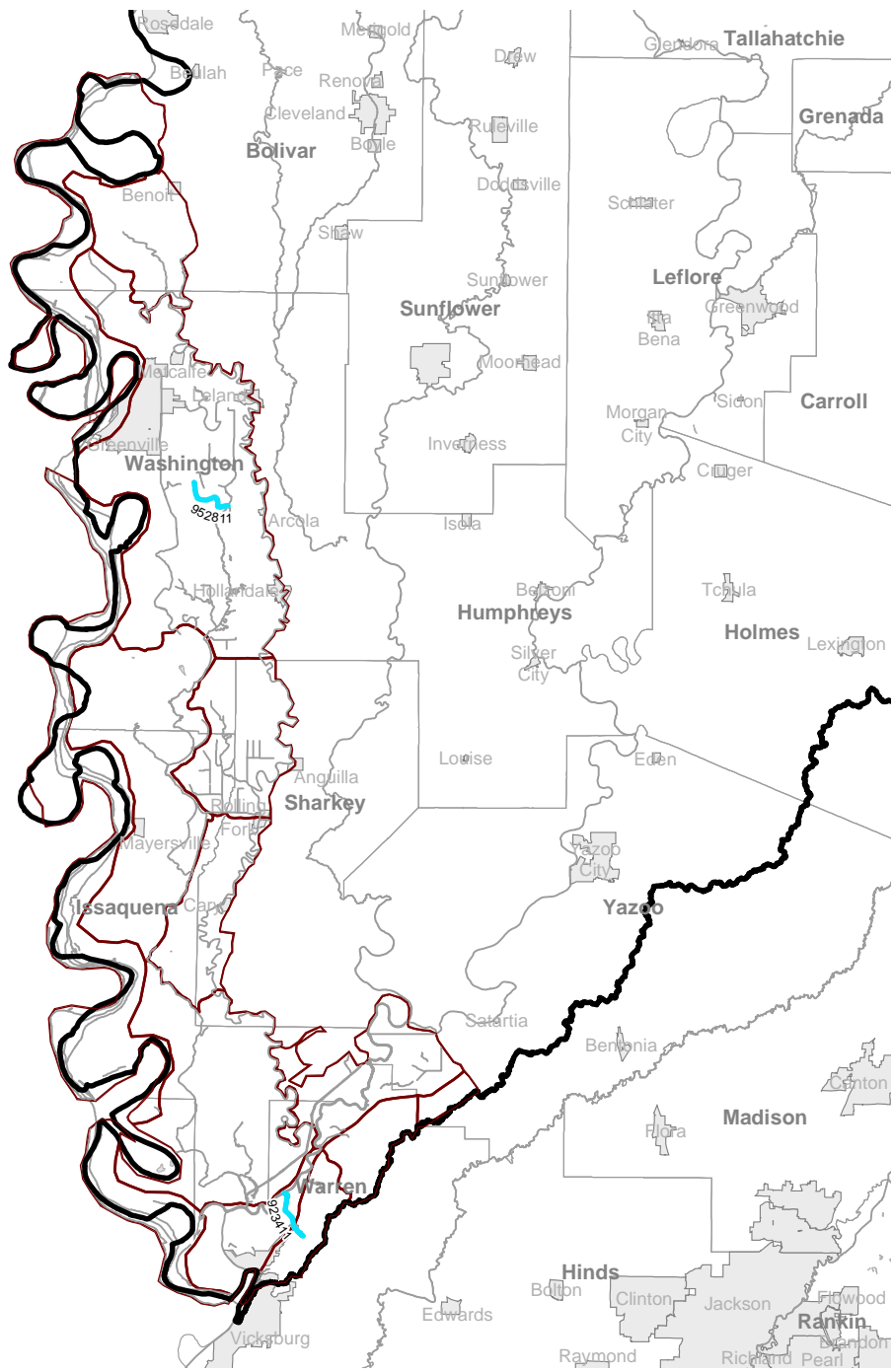
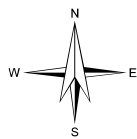


Mississippi Basins



Legend

- Monitored Stream
- Perennial Stream
- Waterbody
- Watershed
- Basin
- City
- County



Monitored Waters

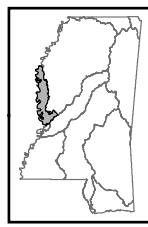
Yazoo/Upper Mississippi River Basin HUCs 08030100, 08030208, and 08030209

This map produced by the Department of Environmental Quality (MDEQ), Office of Pollution Control, Surface Water Division, Standards, Modeling, and TMDL Branch on March 06, 2012.

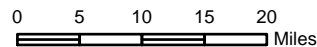
All map data is from the Mississippi Automated Resource Information System (MARIS) and MDEQ.

Map Projection: Mississippi Transverse Mercator

The Mississippi Department of Environmental Quality makes no warranties, expressed or implied, as to the accuracy, completeness, currentness, reliability, or suitability for any particular purpose, of the data contained on this map.



Mississippi Basins



Legend

- Monitored Stream
- Perennial Stream
- Waterbody
- Watershed
- Basin
- City
- County

2012 Mississippi 2012 Section 303(d) List of Impaired Water Bodies