



MISSISSIPPI DEPARTMENT OF ENVIRONMENTAL QUALITY
OFFICE OF GEOLOGY
OPEN-FILE REPORT 170

GEOLOGIC MAP
of the
BROOKHAVEN QUADRANGLE
Lincoln County,
Mississippi

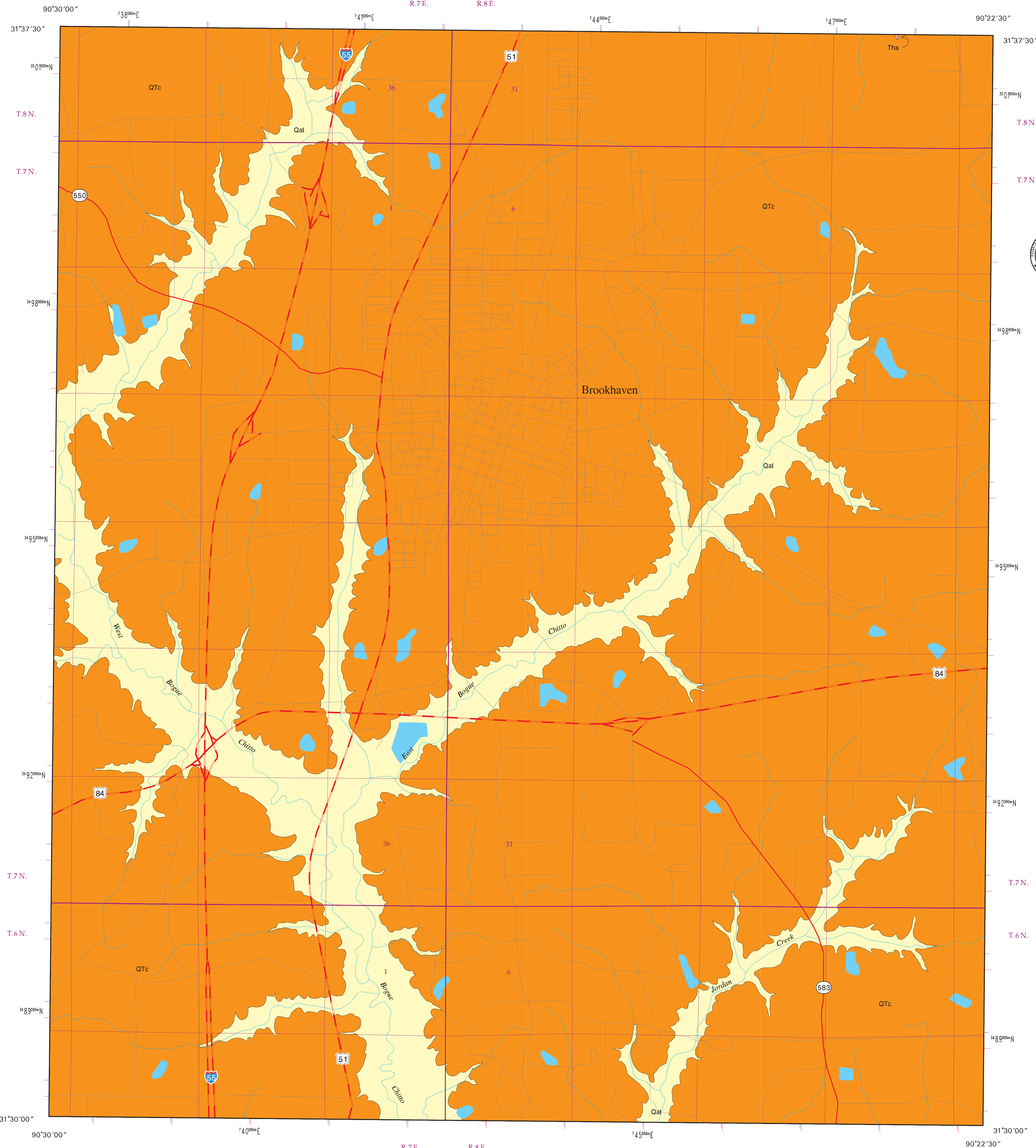


Geology by D. Kenneth Davis and James E. Starnes

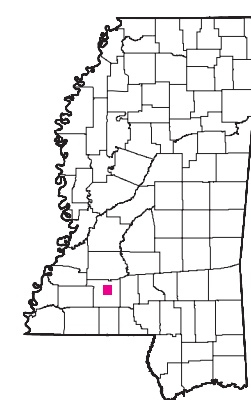
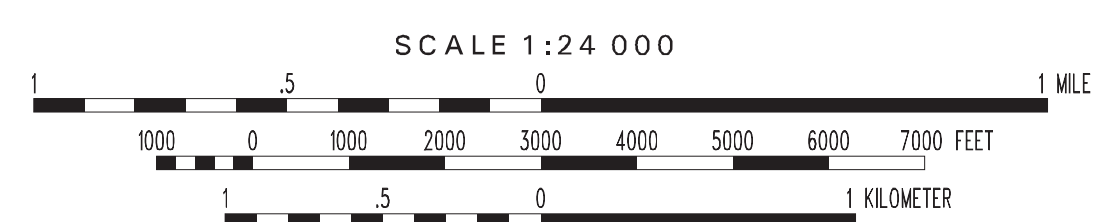
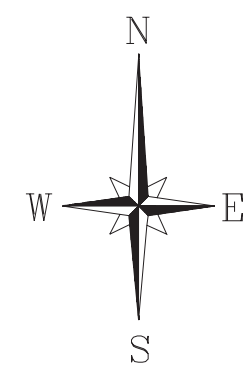
2002

DESCRIPTION OF MAP UNITS

QUATERNARY	HOLOCENE		ALLUVIUM Qal Sand, flood plain sands and silts.
	PLIO-PLEISTOCENE		CITRONELLE FORMATION Qtc Sand, yellow, orange, purple, red, pink, fine- to coarse-grained, predominantly quartzose, cross-bedded to massive; graveliferous, pea to cobble size, predominantly chert with lesser amounts of vein quartz, metaquartzite, agate, and sandstone; clay, pink to white, generally occurring as discontinuous lenses and as rip-up clasts, clasts may be boulder size. Conglomeratic ironstone ledges are common in the graveliferous sands at the base of the formation.
TERTIARY	MIOCENE		HATTIESBURG FORMATION Tha Clay, green, gray, brown, weathers white to brown, silty to sandy, locally lignitic, barite nodules common; sand, gray, pale yellow to white, often indurated to orthoquartzite at surface, fine- to coarse-grained, cross-bedded to massive, predominantly quartzose with lesser amounts of chert, quartzite, and mica, silicified wood common.



GEOLOGIC MAP
BROOKHAVEN QUADRANGLE
Lincoln County, Mississippi



Copyright © 2002 Mississippi Department of Environmental Quality, Office of Geology

Geology field checked in 2002 using the 1922 U.S. Geological Survey 7.5-minute topographic quadrangle, 1927 North American datum, contour interval 10 feet.

Mississippi Transverse Mercator projection, 1983 North American datum, GR580 spheroid, 1000-meter Universal Transverse Mercator grid ticks, zone 15; 1983 datum shown in red, 1927 datum shown in blue.

Sources: Road and water features, USGS Digital Line Graph data, 1:100,000 scale. Public Land Survey System, Mississippi Automated Resource Information System (MARIS), 1:24,000 scale.

Geographic Information System by Daniel W. Morse.