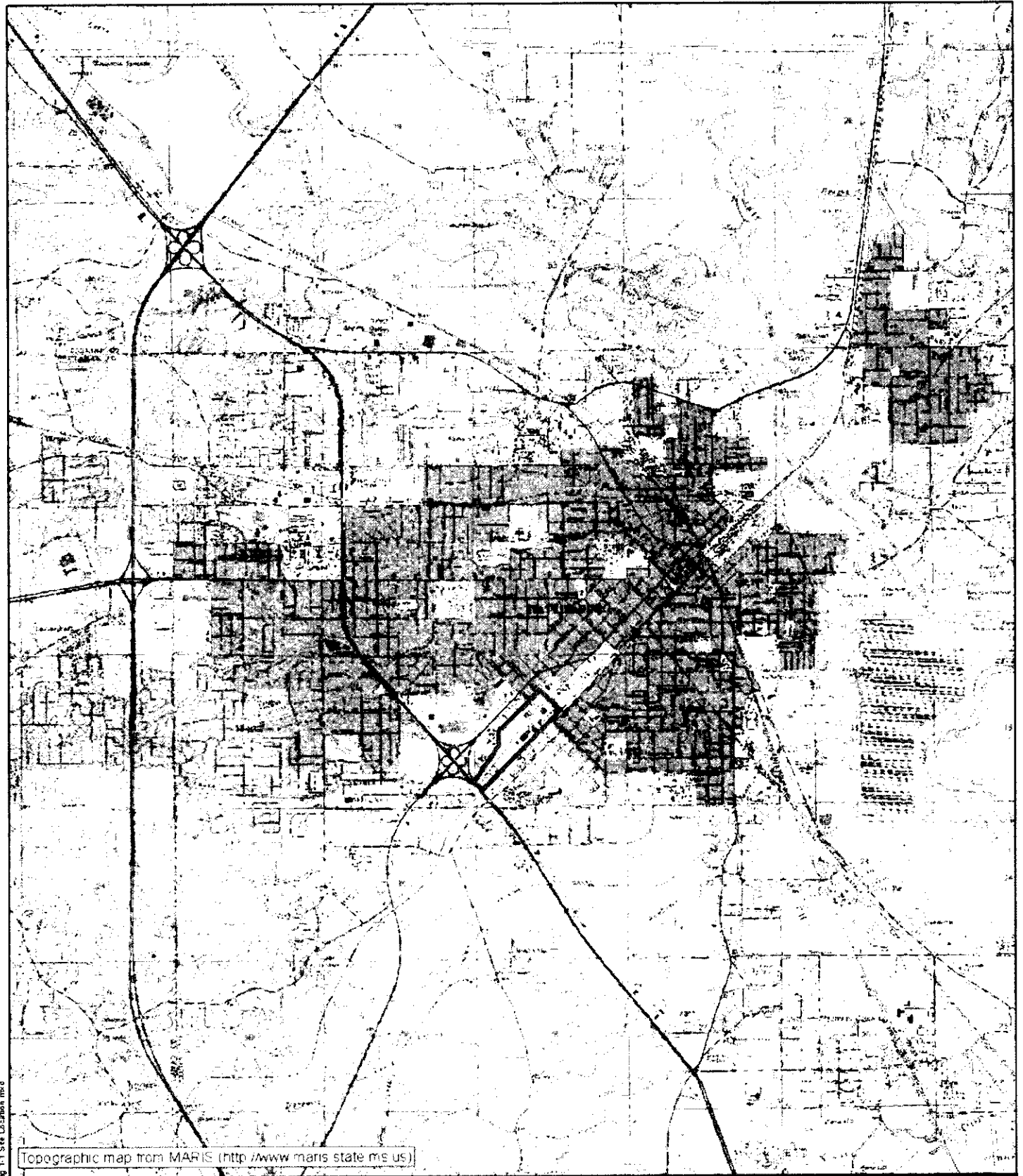


**Figures**

**Remedial Action Report**


**Former Gulf States Creosoting Site  
Hattiesburg, Mississippi**



Topographic map from MARIS (<http://www.maris.state.ms.us>)

D:\21-04 Gulf States Creosoting\Map\01\_14\02\Fig 1.1 Site Location.mxd

**Legend**

 Approximate Site Boundary

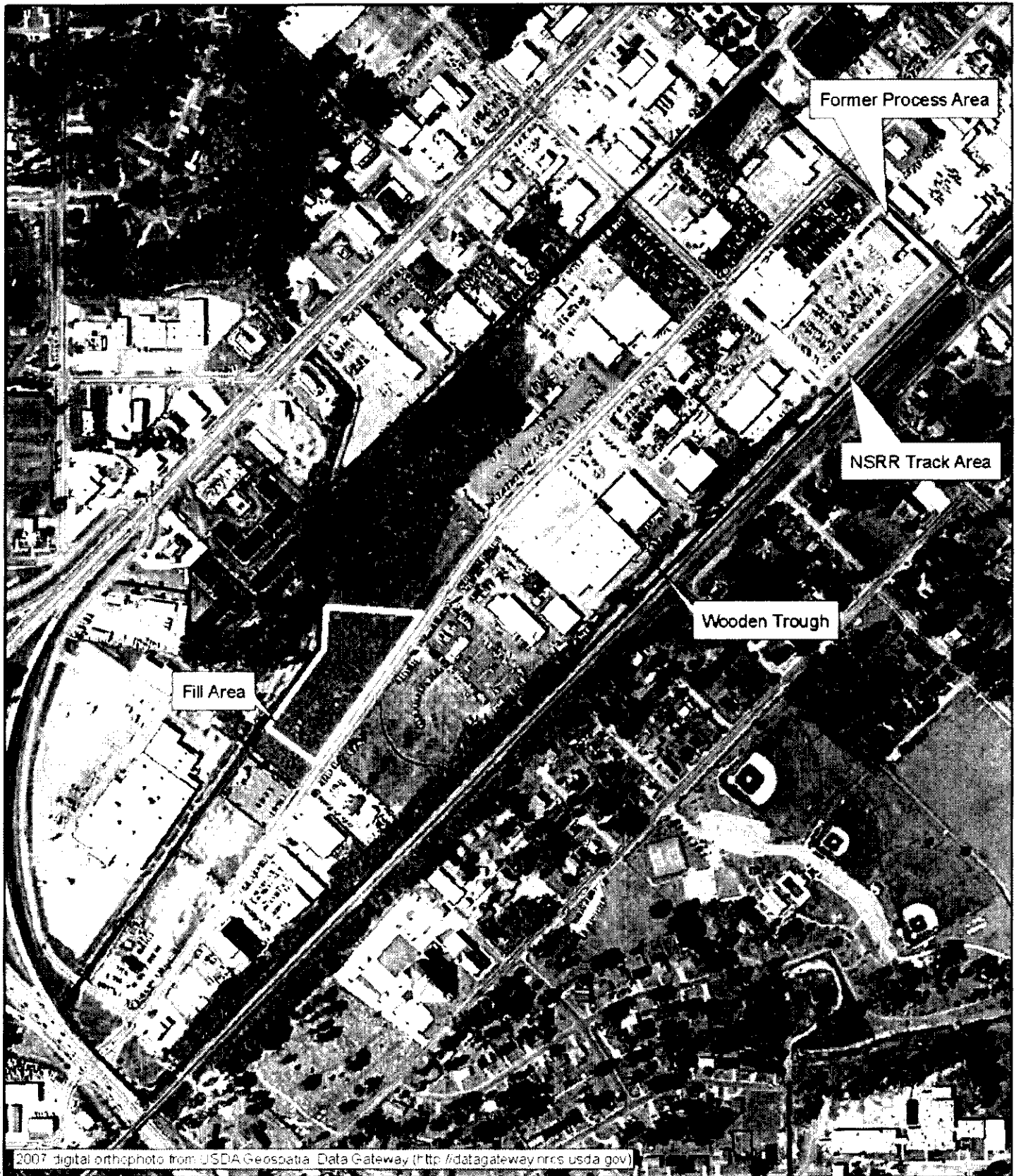


**Figure 1-1**  
**Site Location Map**  
 Former Gulf States Creosoting Site  
 Hattiesburg, Mississippi

**MICHAEL PISANI & ASSOCIATES, INC.**


Environmental Management & Engineering Services  
 Houston, Texas New Orleans, Louisiana Baton Rouge, Louisiana

Designed JRB	Drawn JRB	Checked DCU	Date 7/12/2008	Project 21-04
--------------	-----------	-------------	----------------	---------------



2007 digital orthophoto from USDA Geospatial Data Gateway (<http://datagateway.nrrs.usda.gov/>)

**Legend**

 Approximate Site Boundary



N



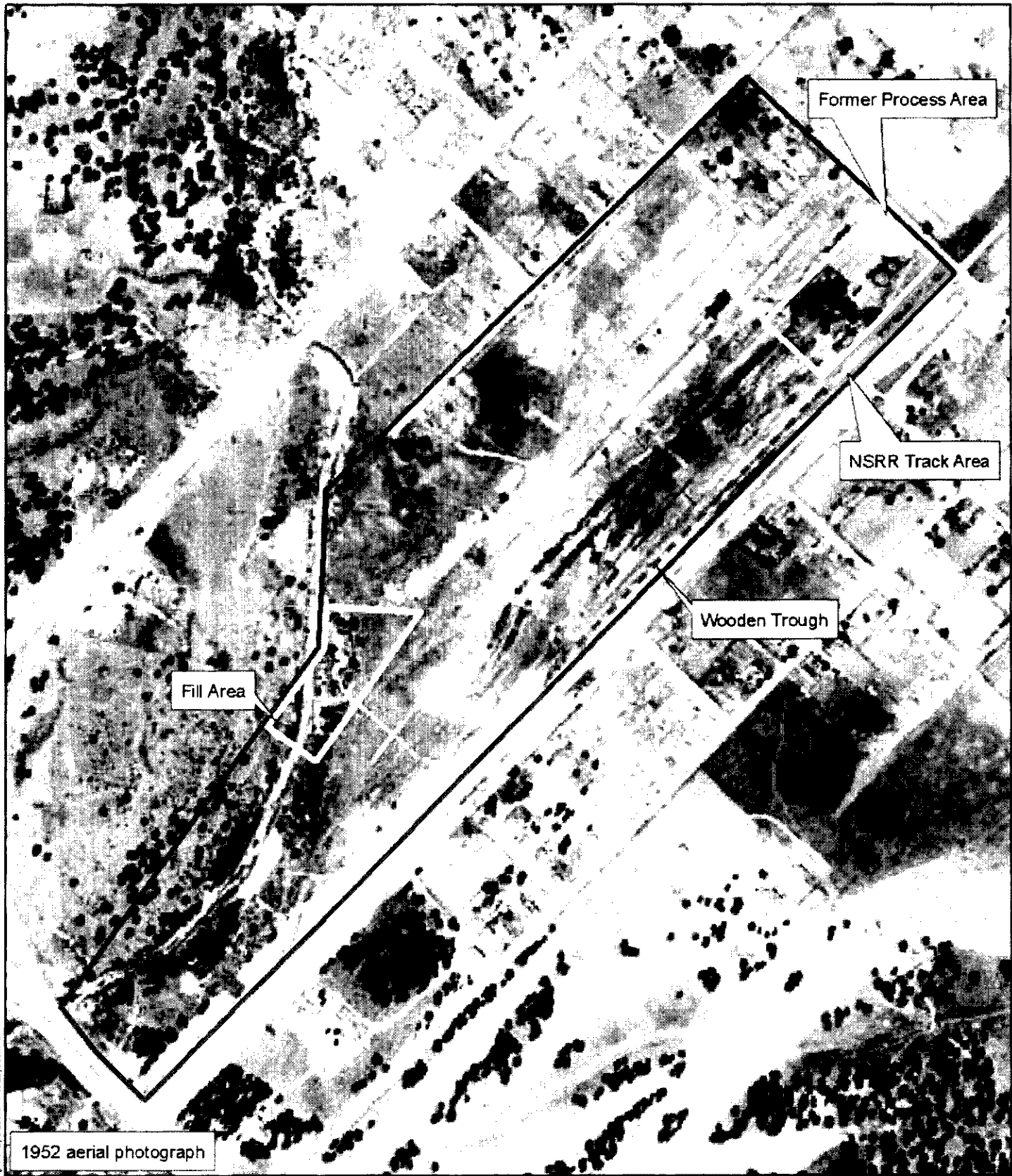
Figure 1-2  
 Current Site Layout  
 Former Gulf States Creosoting Site  
 Hattiesburg, Mississippi

**MICHAEL PISANI & ASSOCIATES, INC.**

Environmental Management & Engineering Services  
 Houston, Texas New Orleans, Louisiana Baton Rouge, Louisiana

Designed JRB	Drawn JRB	Checked DCU	Date 7/12/2008	Project 21-04
--------------	-----------	-------------	----------------	---------------

D:\V1\04\Gulf States Creosoting\01\_14\12\Fig 1-2 Current Layout.mxd



1952 aerial photograph

**Legend**

 Approximate Site Boundary

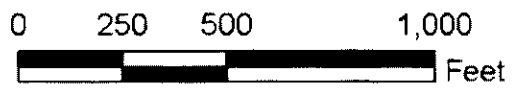


Figure 1-3  
Operational Site Layout  
Former Gulf States Creosoting Site  
Hattiesburg, Mississippi

**MICHAEL PISANI & ASSOCIATES, INC.**

Environmental Management & Engineering Services  
Houston, Texas New Orleans, Louisiana Baton Rouge, Louisiana

Designed JRB	Drawn JRB	Checked DCU	Date 7/12/2008	Project 21-04
--------------	-----------	-------------	----------------	---------------

D:\21-04\Gulf States Creosoting\Map\01\_07\12\Fig 1-3 Operational Site Layout.mxd