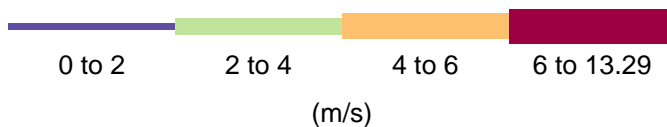
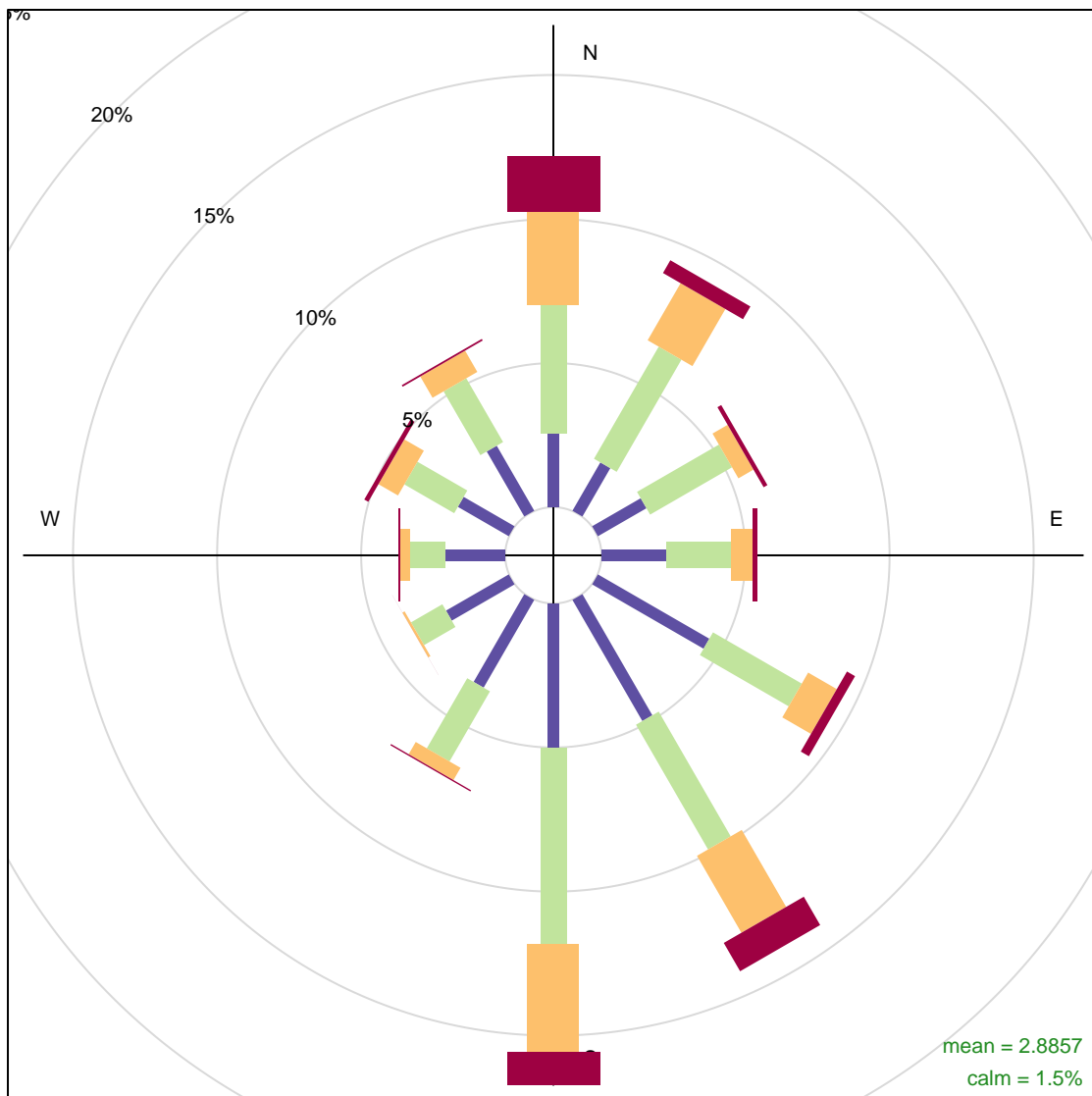
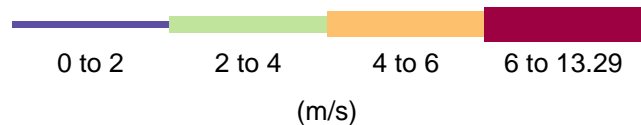
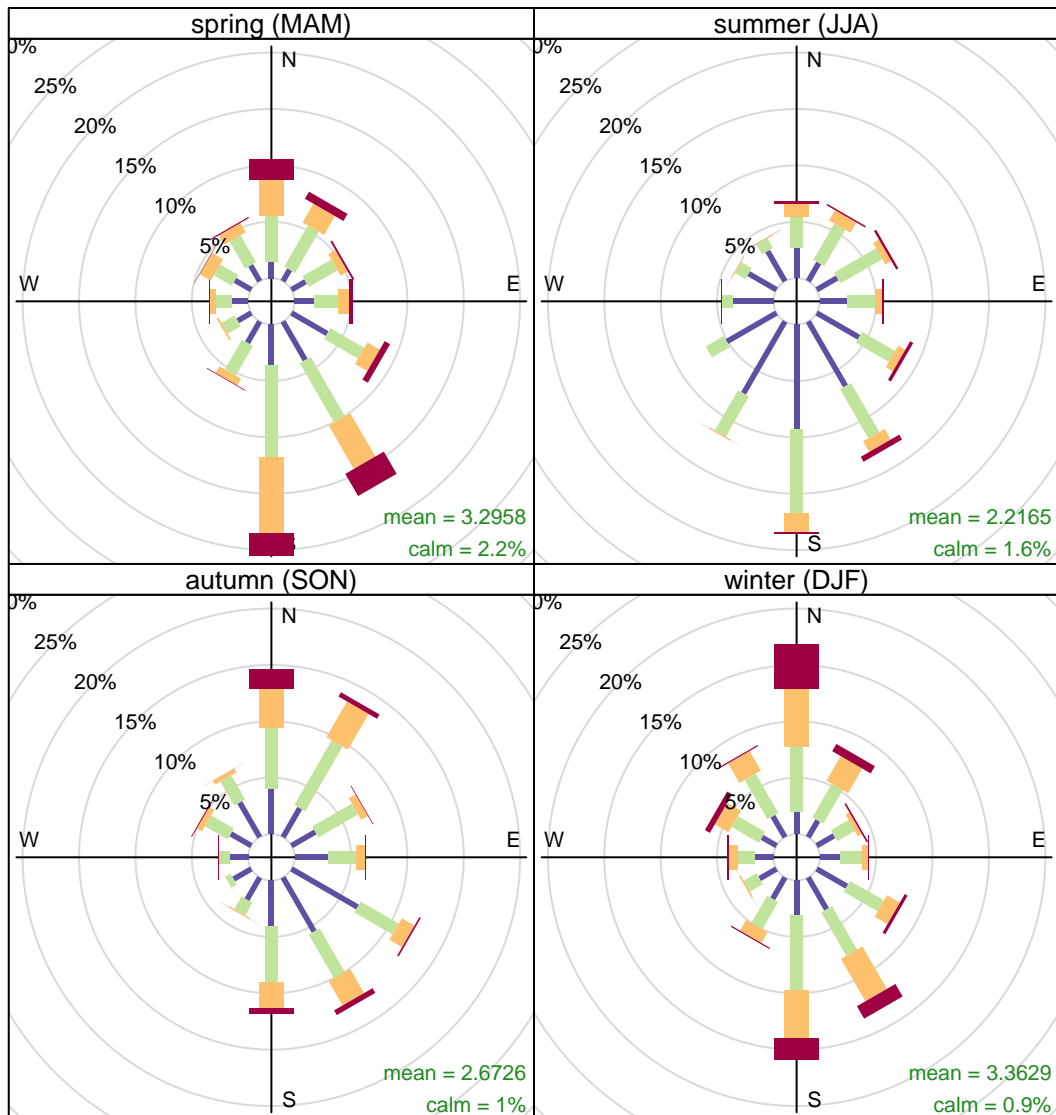


# VICKSBURG/TALLULAH REGIONAL AIRPORT

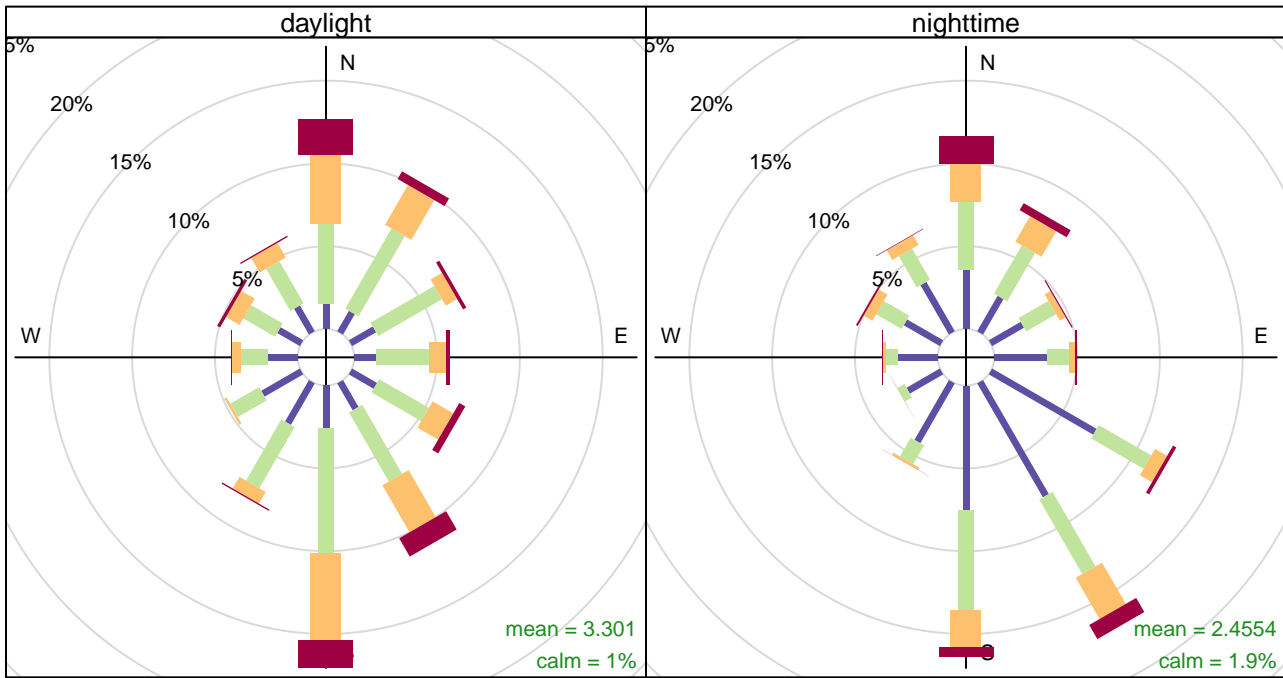
Vicksburg, Mississippi



Frequency of counts by wind direction (%)

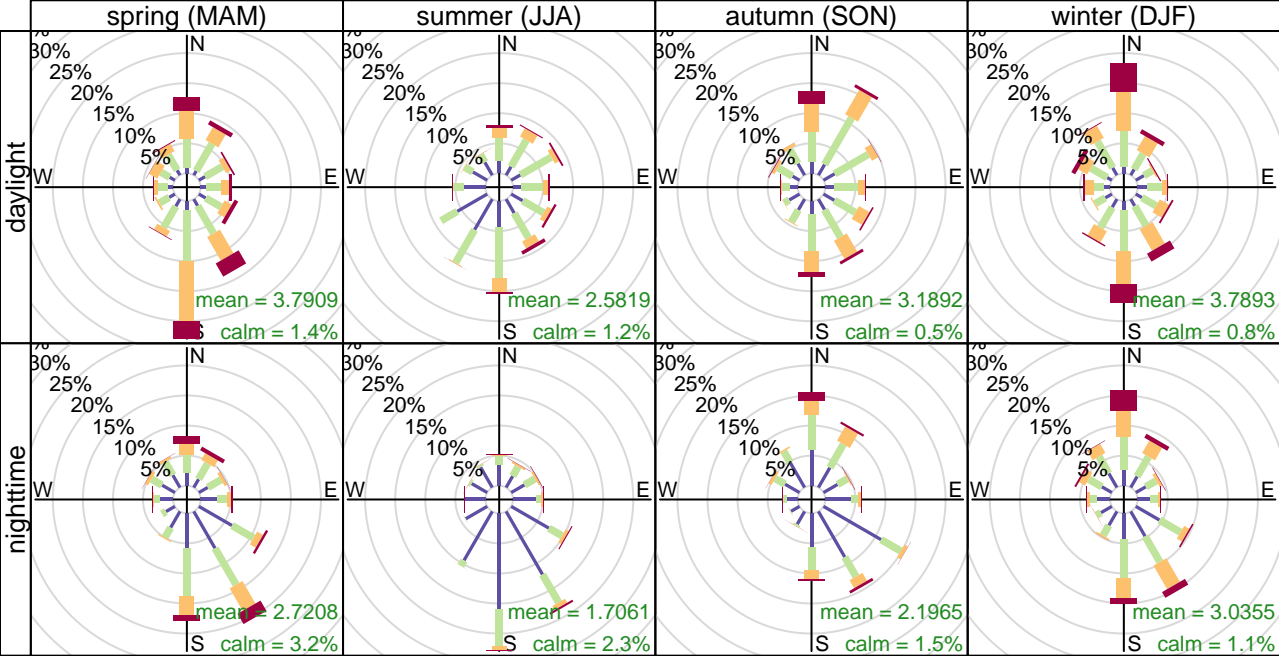


Frequency of counts by wind direction (%)



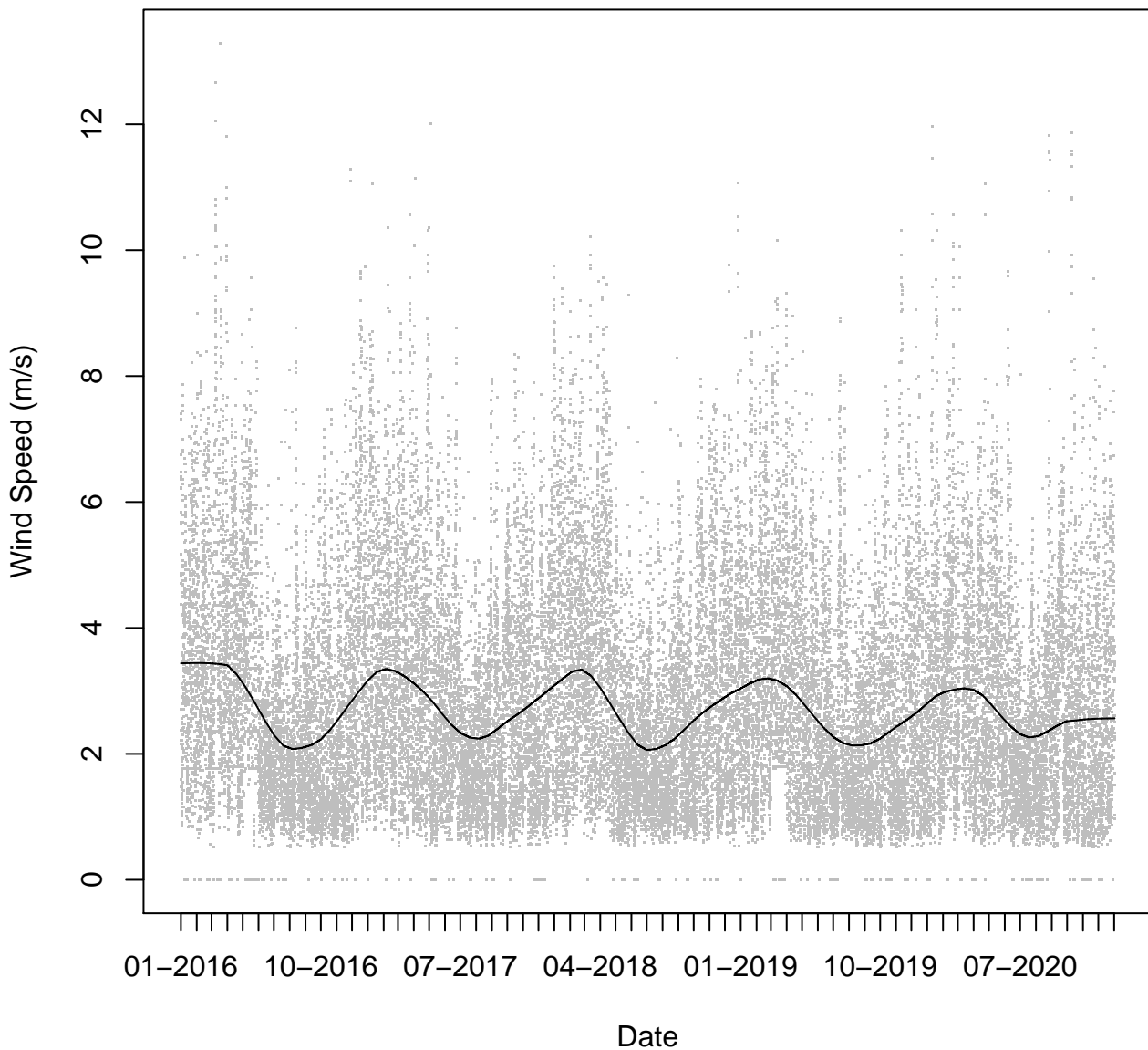
(m/s)

Frequency of counts by wind direction (%)

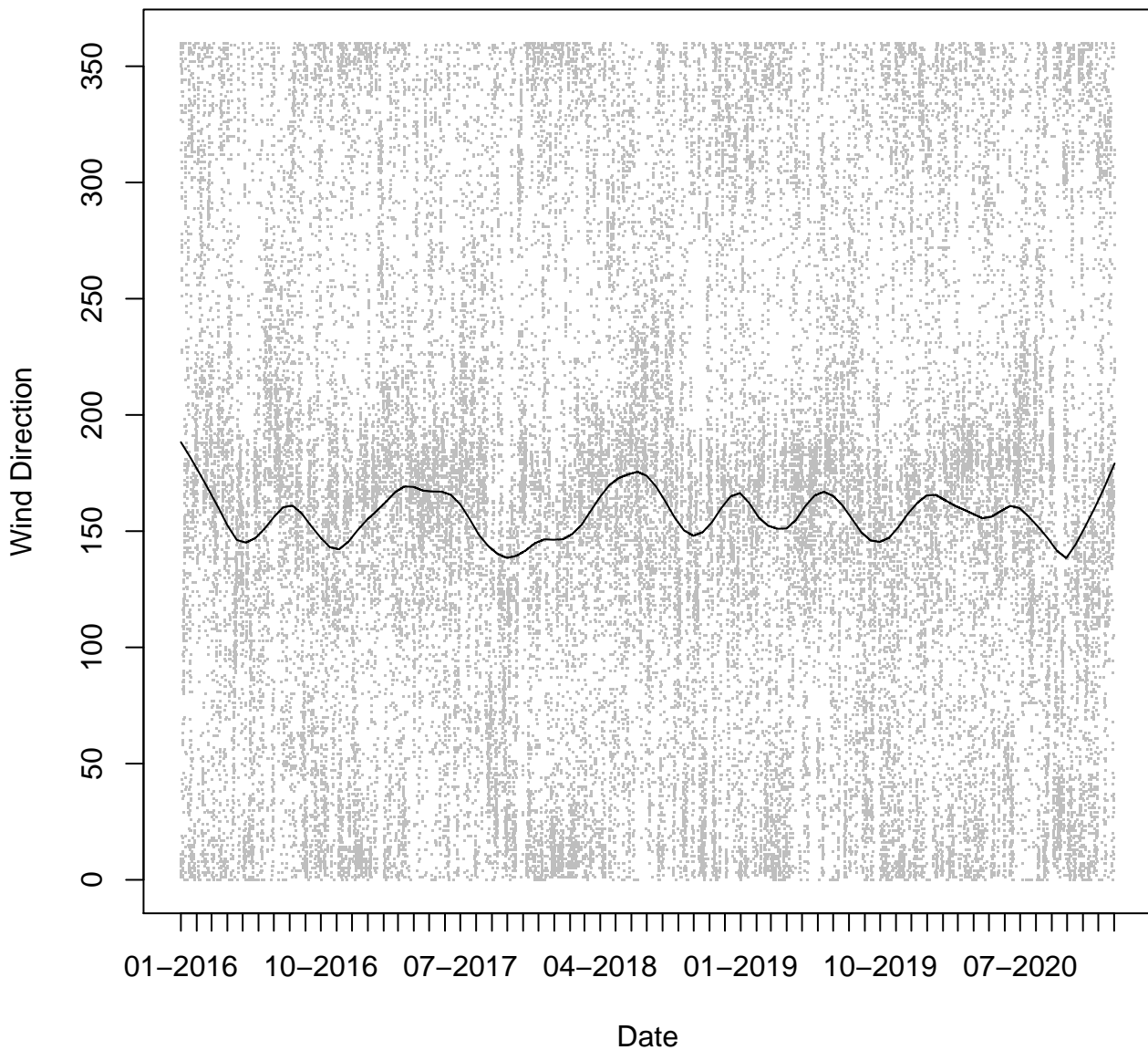


Frequency of counts by wind direction (%)

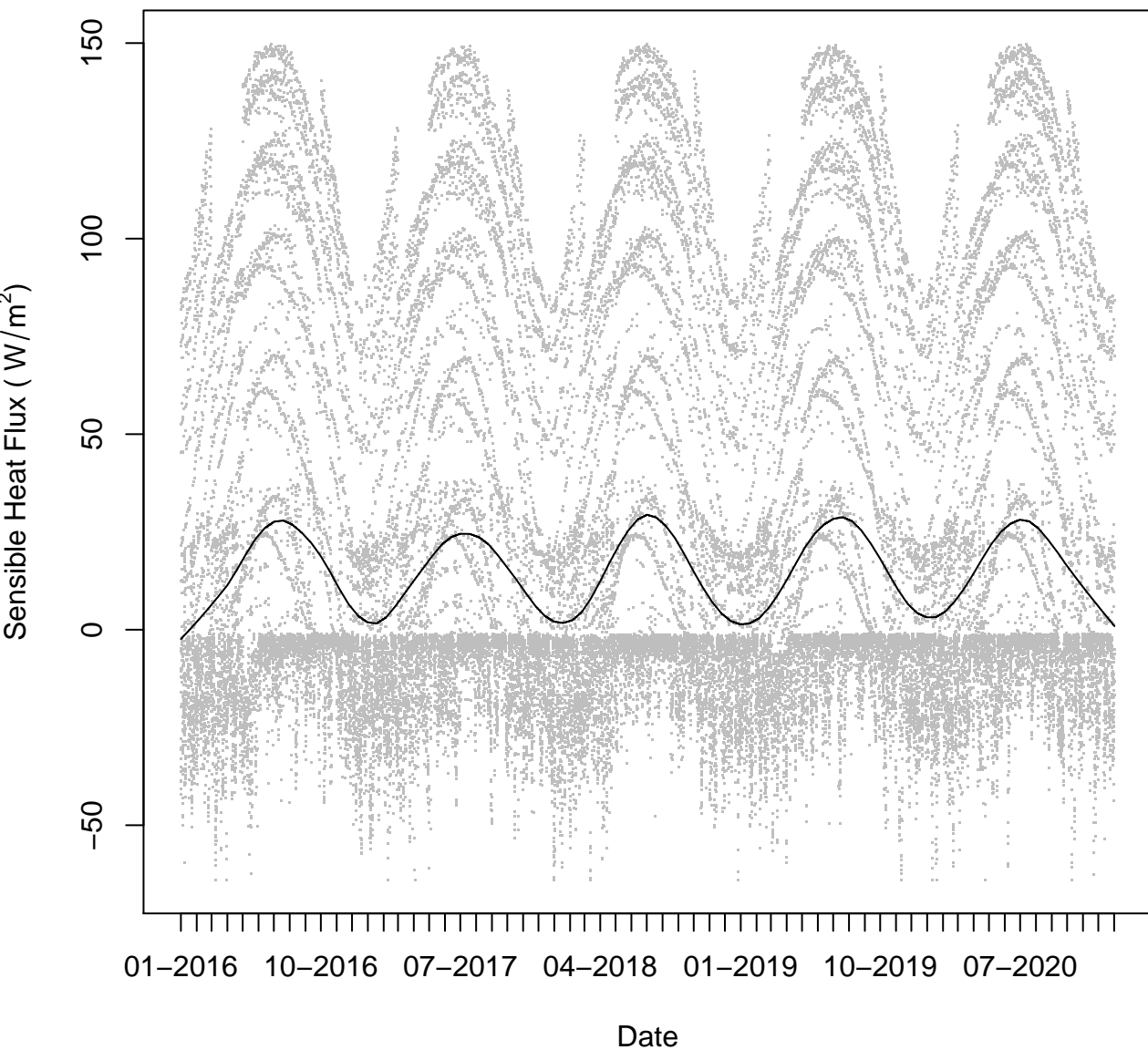
# Surface File Wind Speed



# Wind Direction

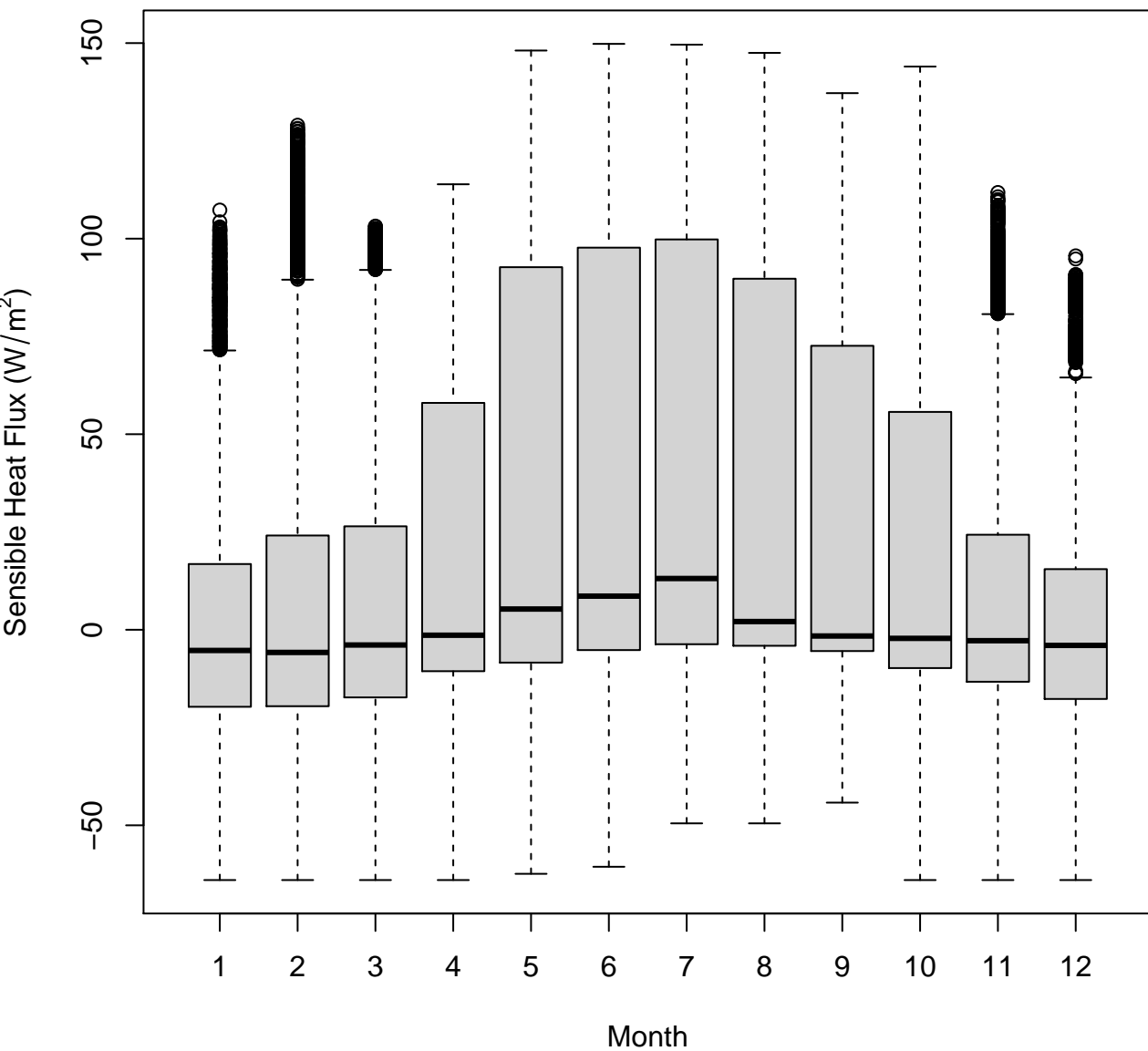


# Sensible Heat Flux

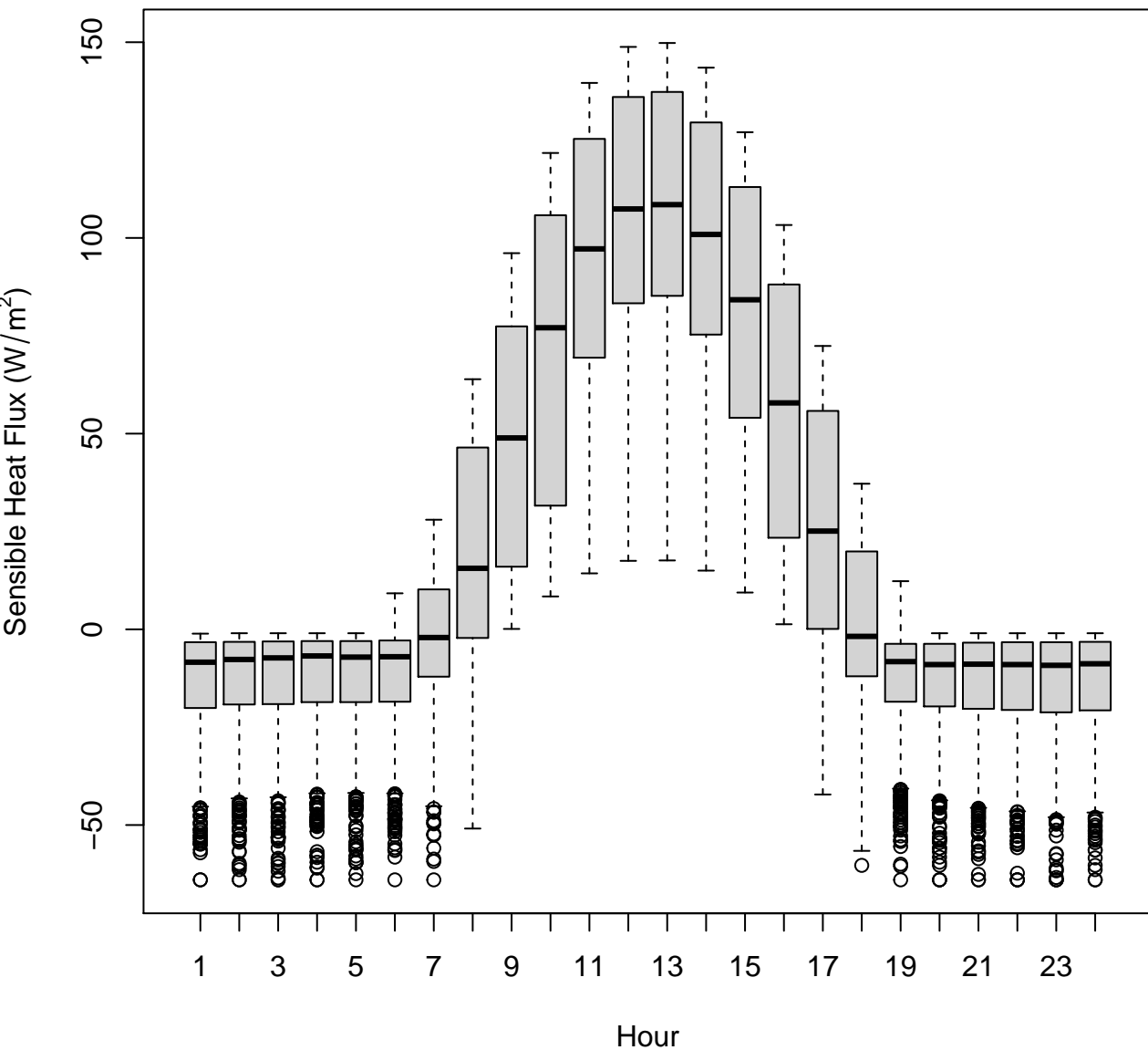




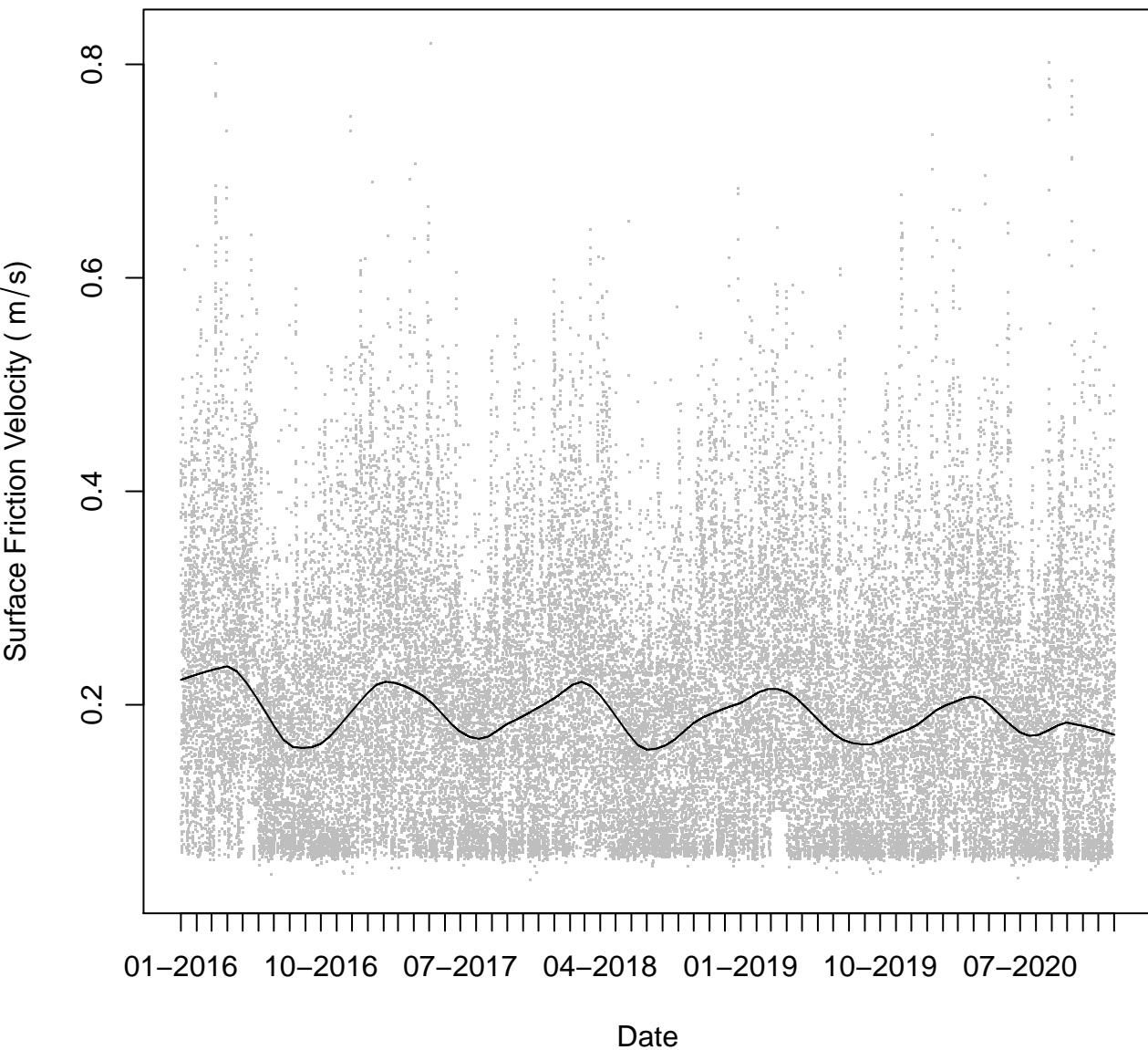
**Sensible Heat Flux by Month**



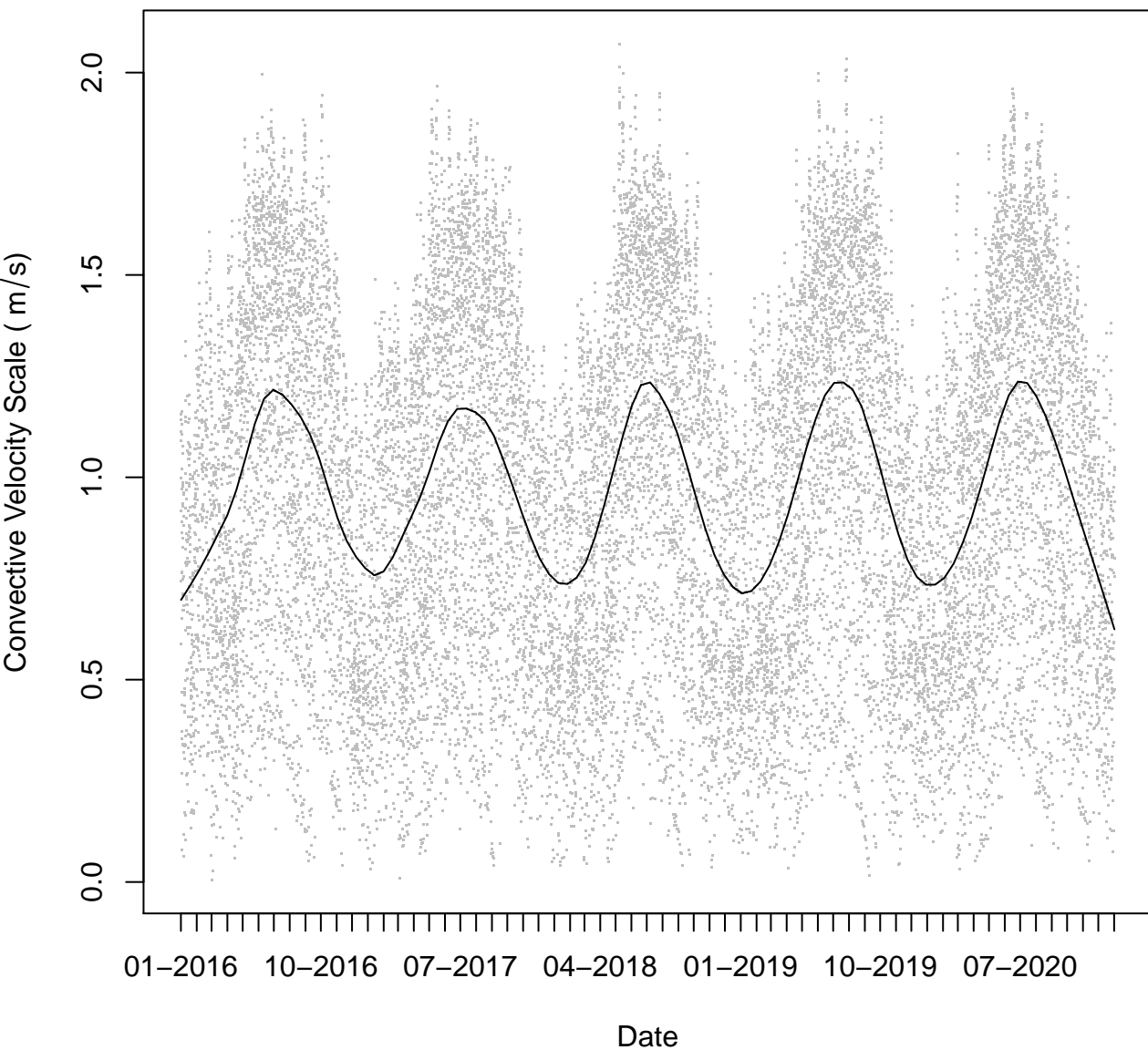
**Sensible Heat Flux by Hour**



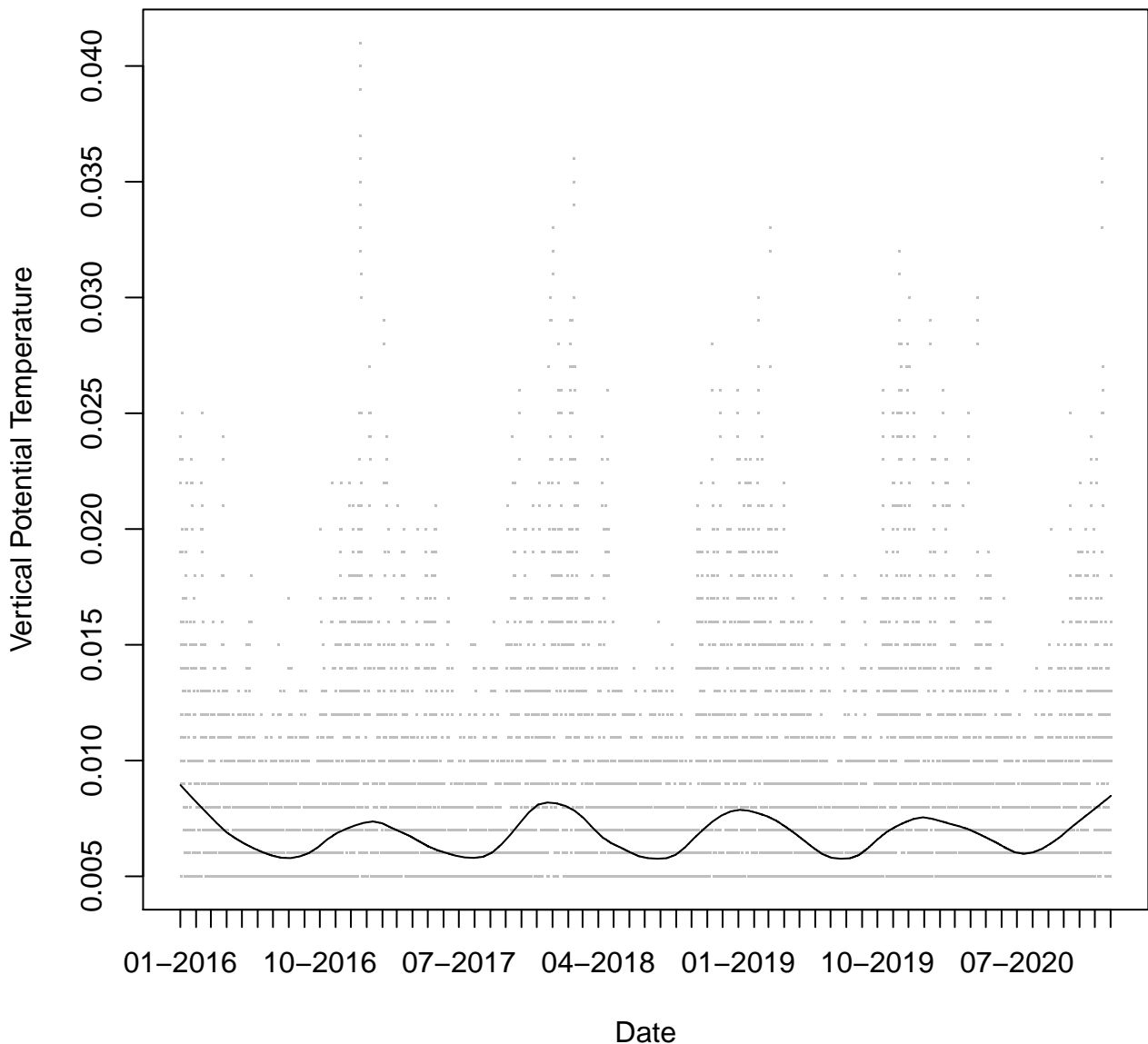
# Surface Friction Velocity



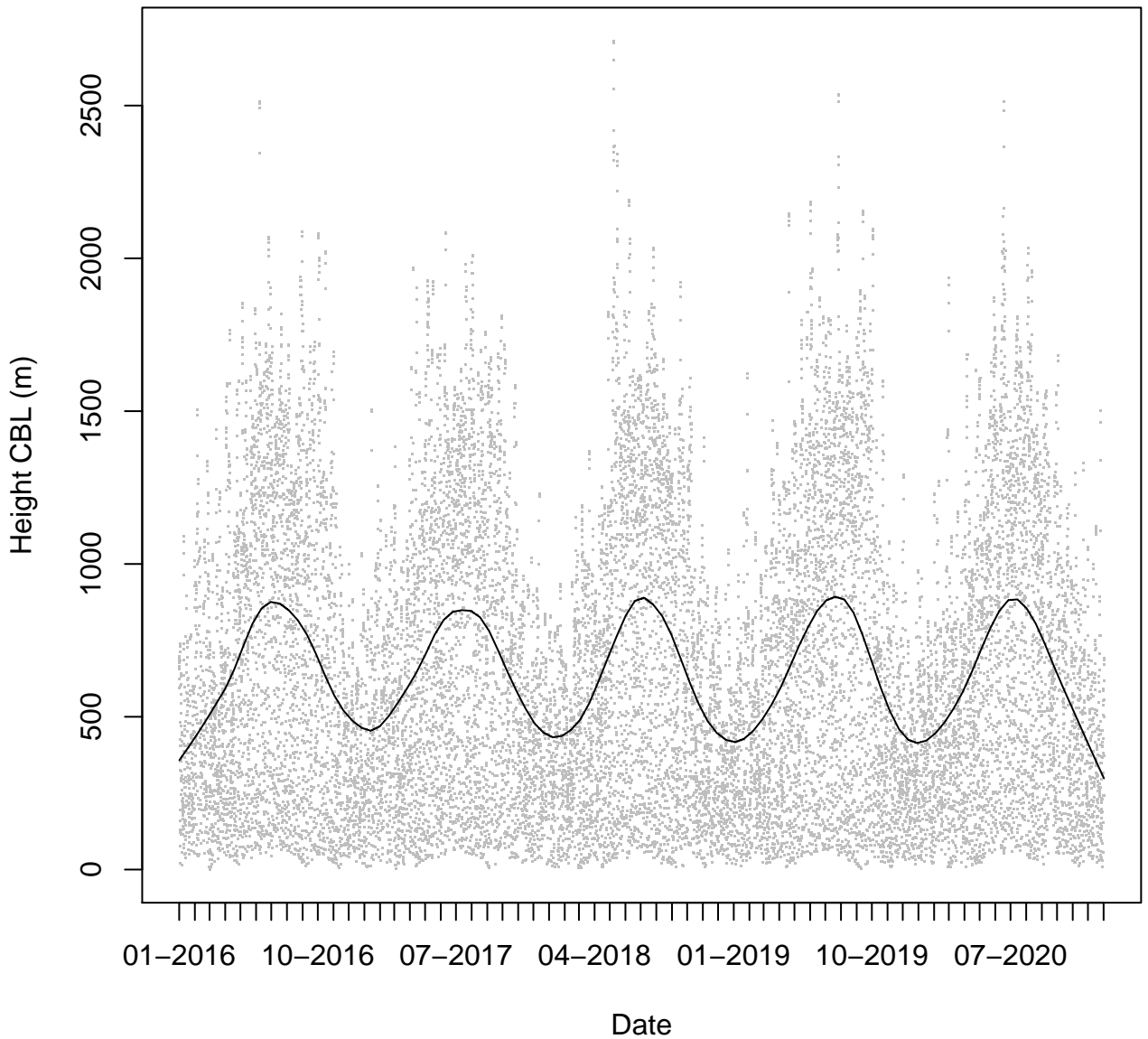
# Convective Velocity Scale



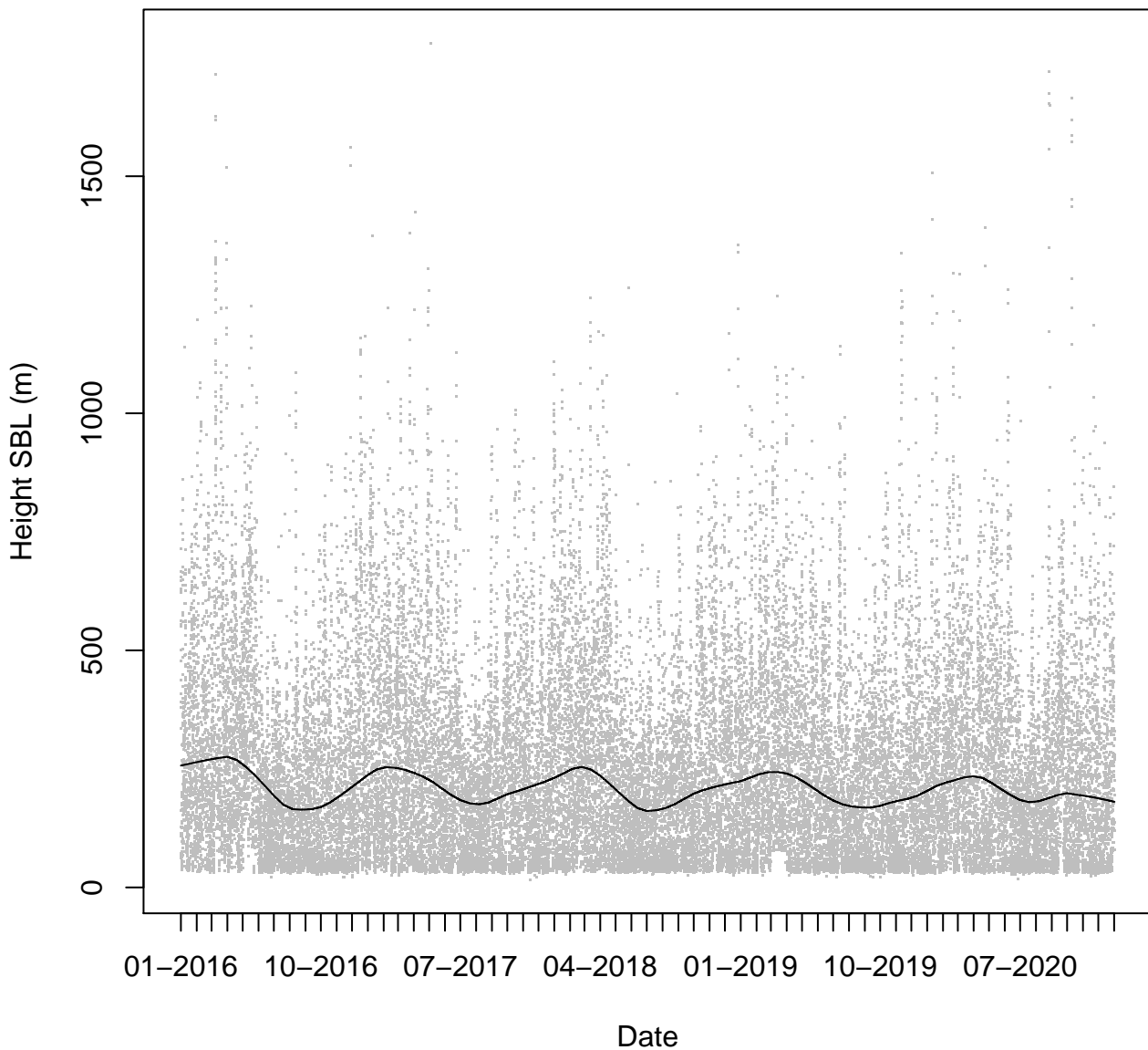
# Vertical Potential Temperature Gradient above PBL



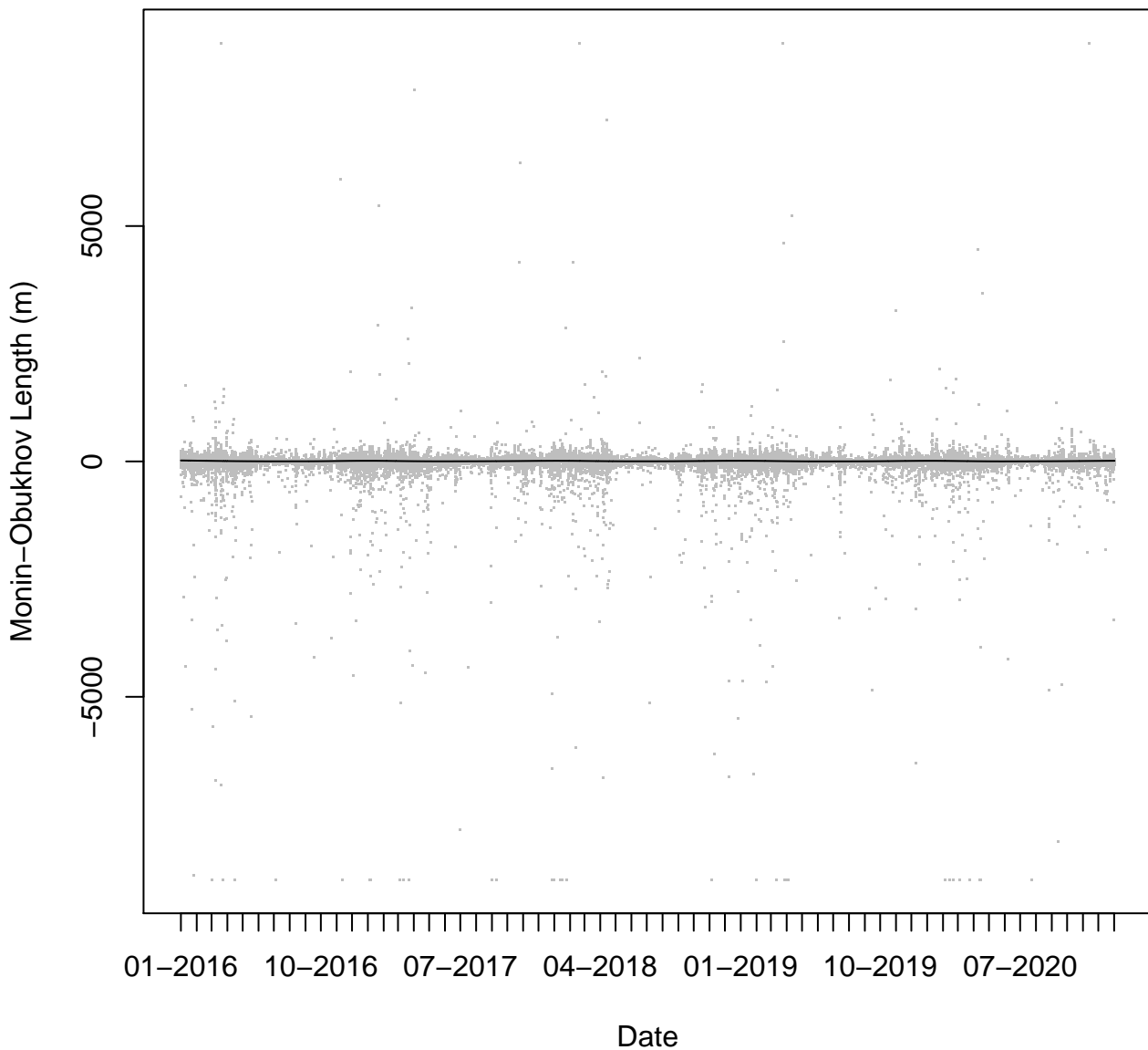
# Height of Convective Boundary Layer



# Height of Stable Boundary Layer

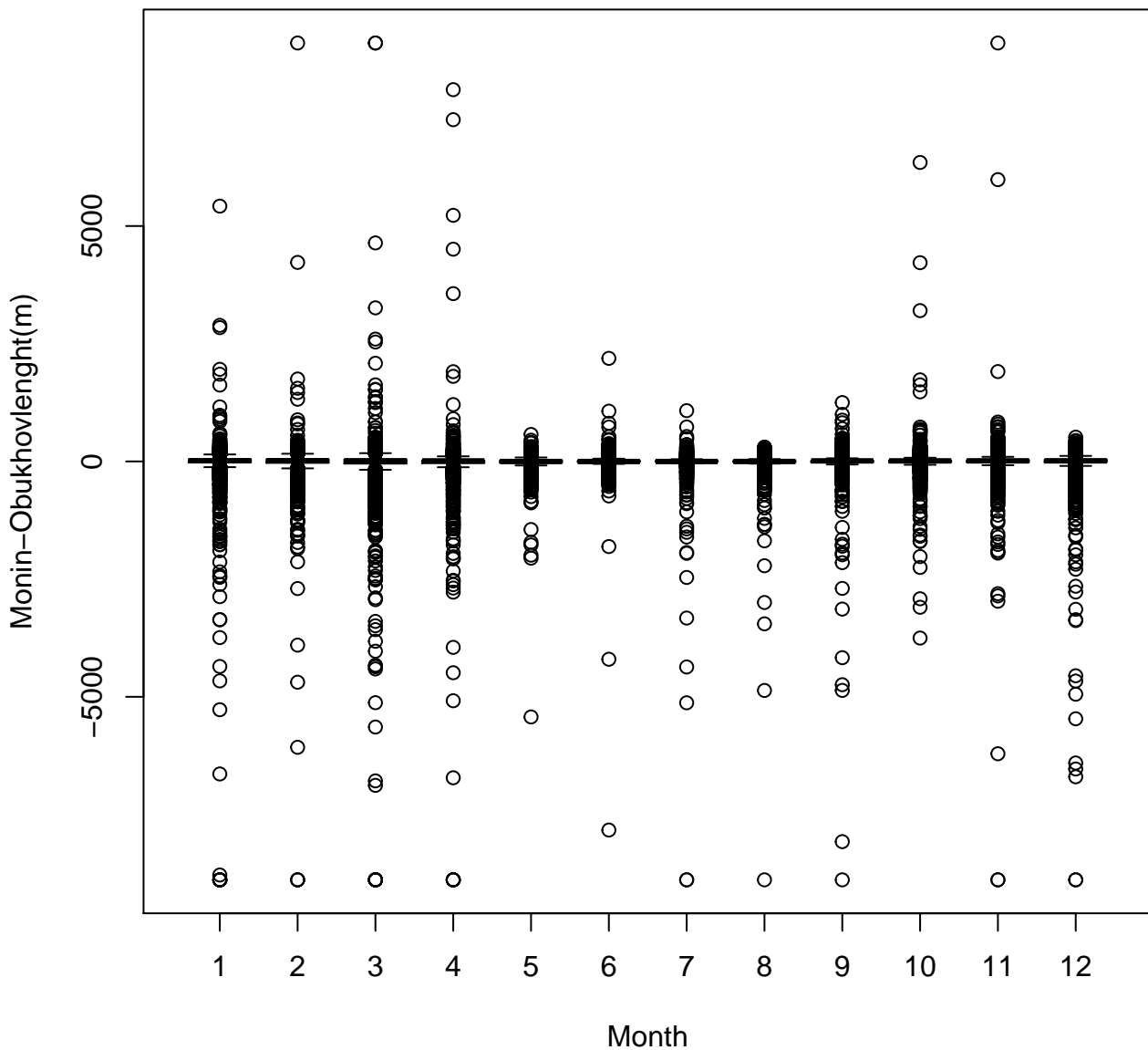


# Monin-Obukhov Length

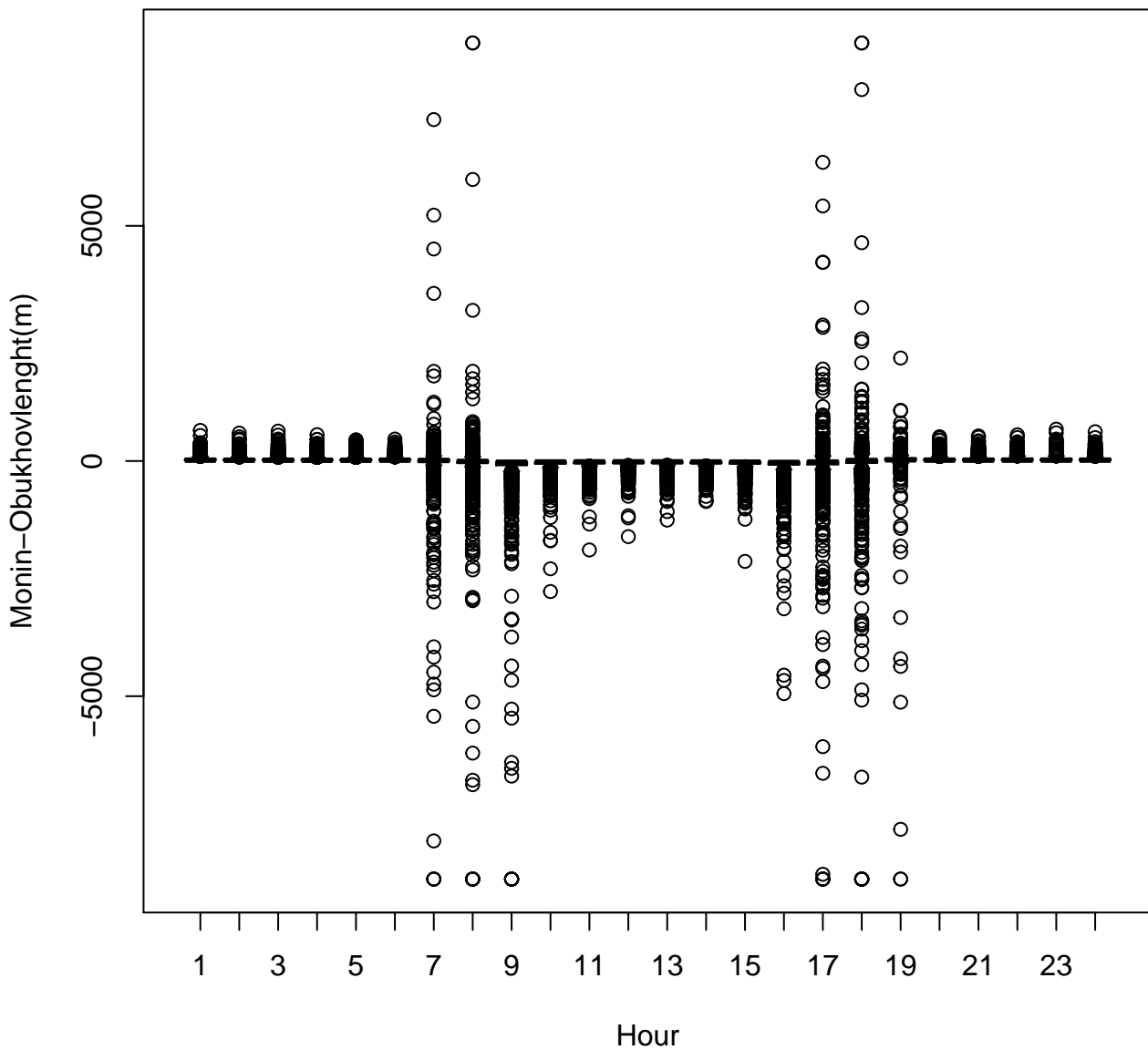




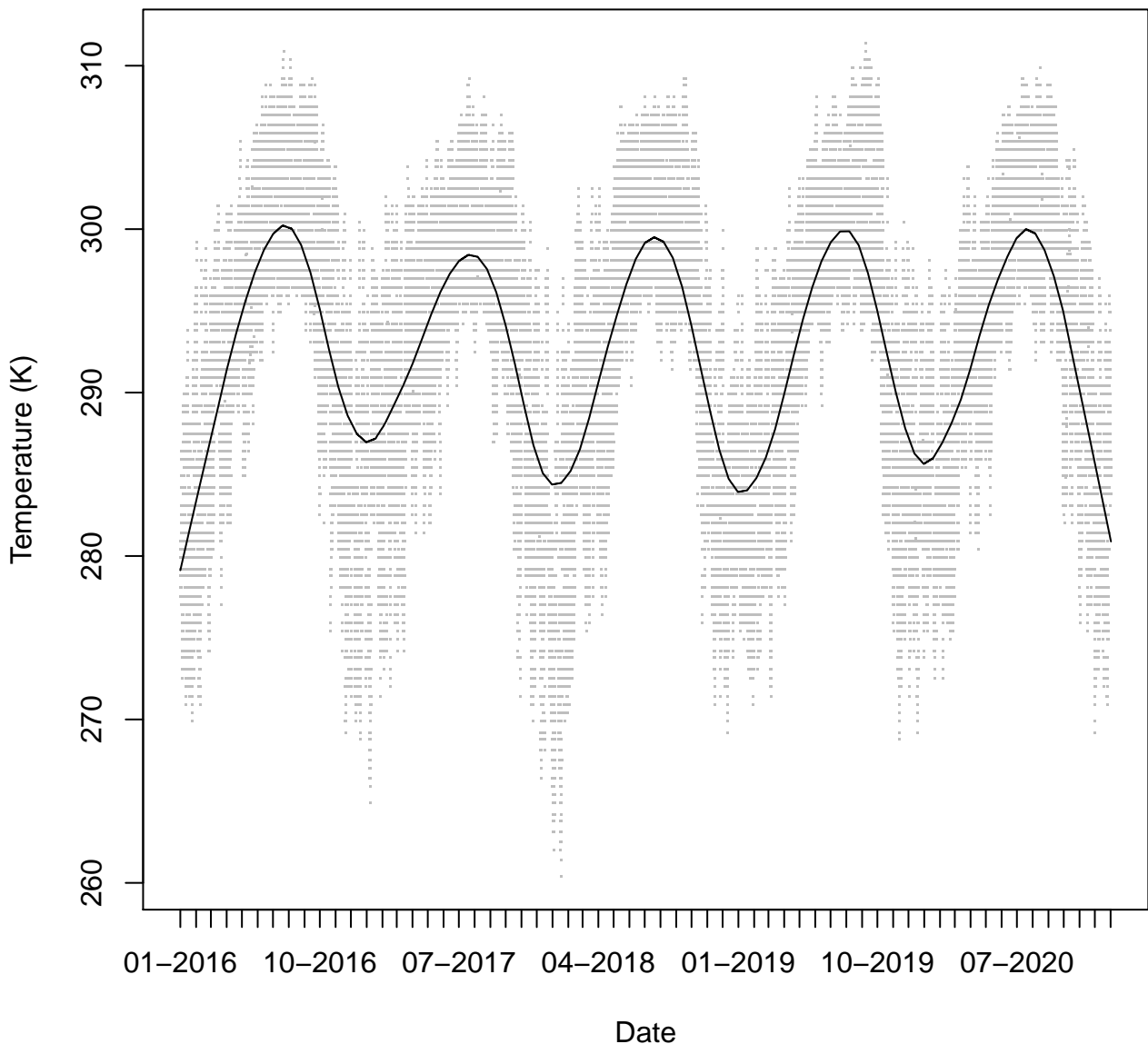
Monin–Obukhov Length by Month



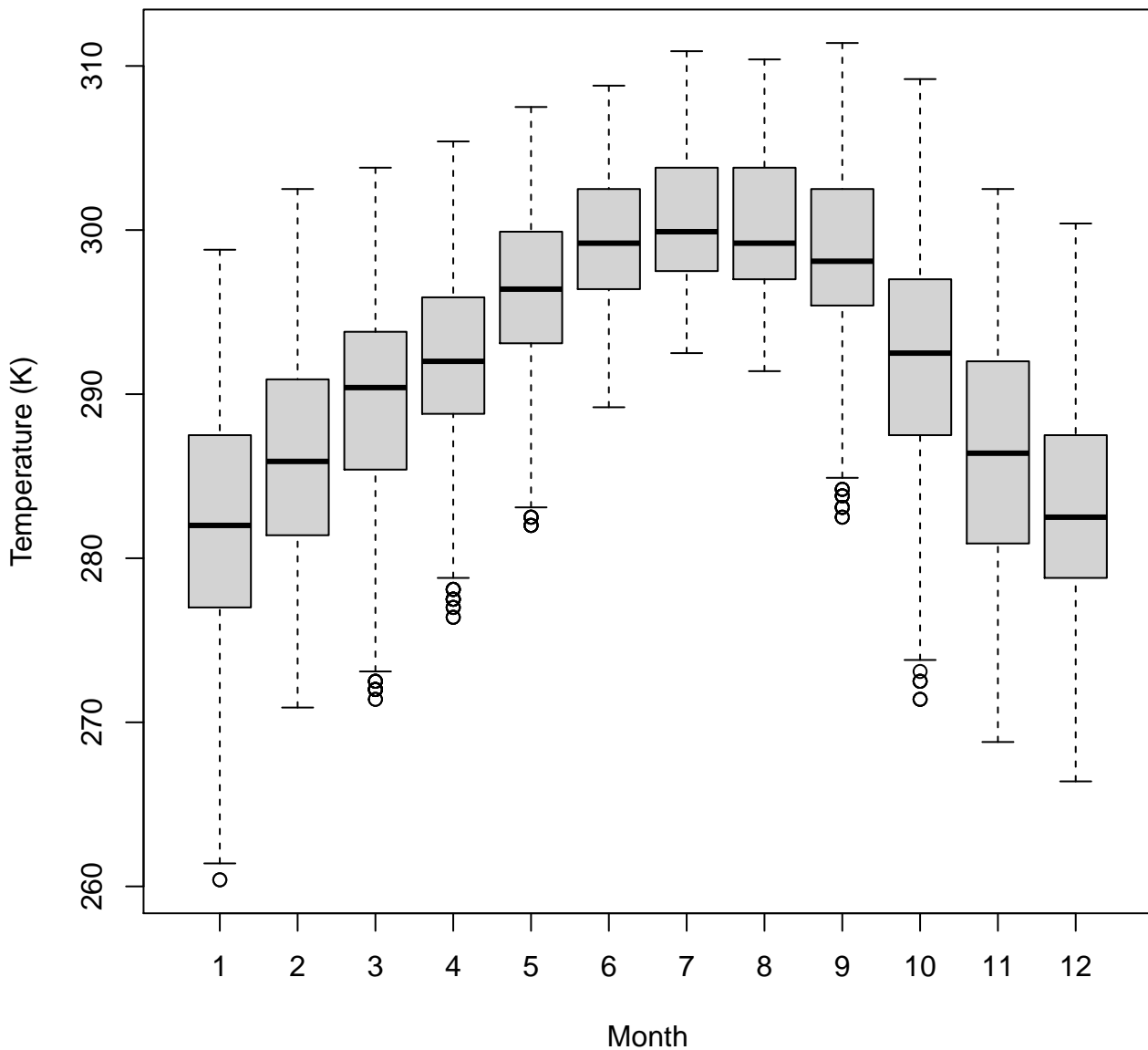
Monin–Obukhov Length by Hour



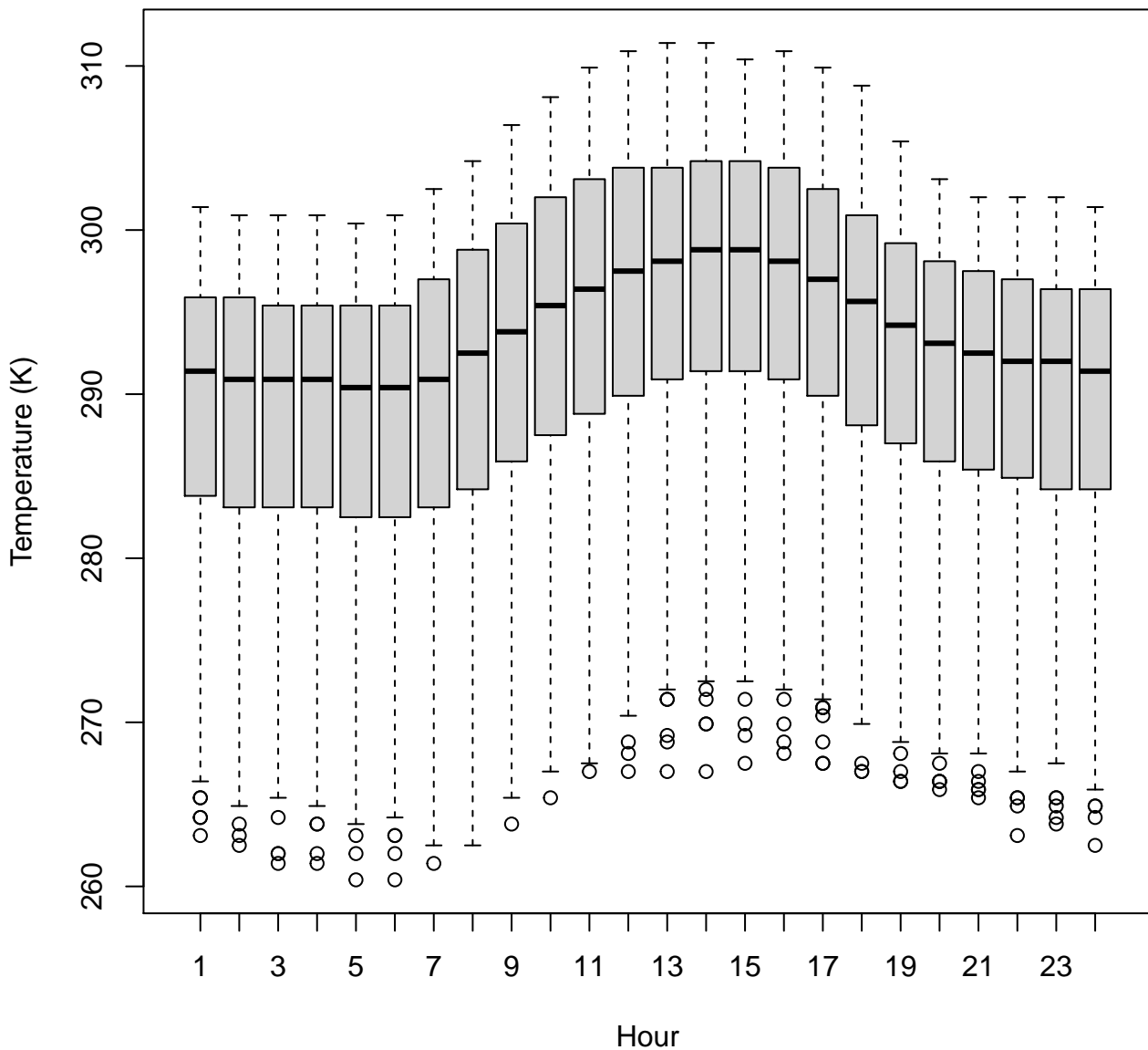
# Temperature



Temperature by Month



Temperature by Hour



# Relative Humidity

Relative Humidity (%)

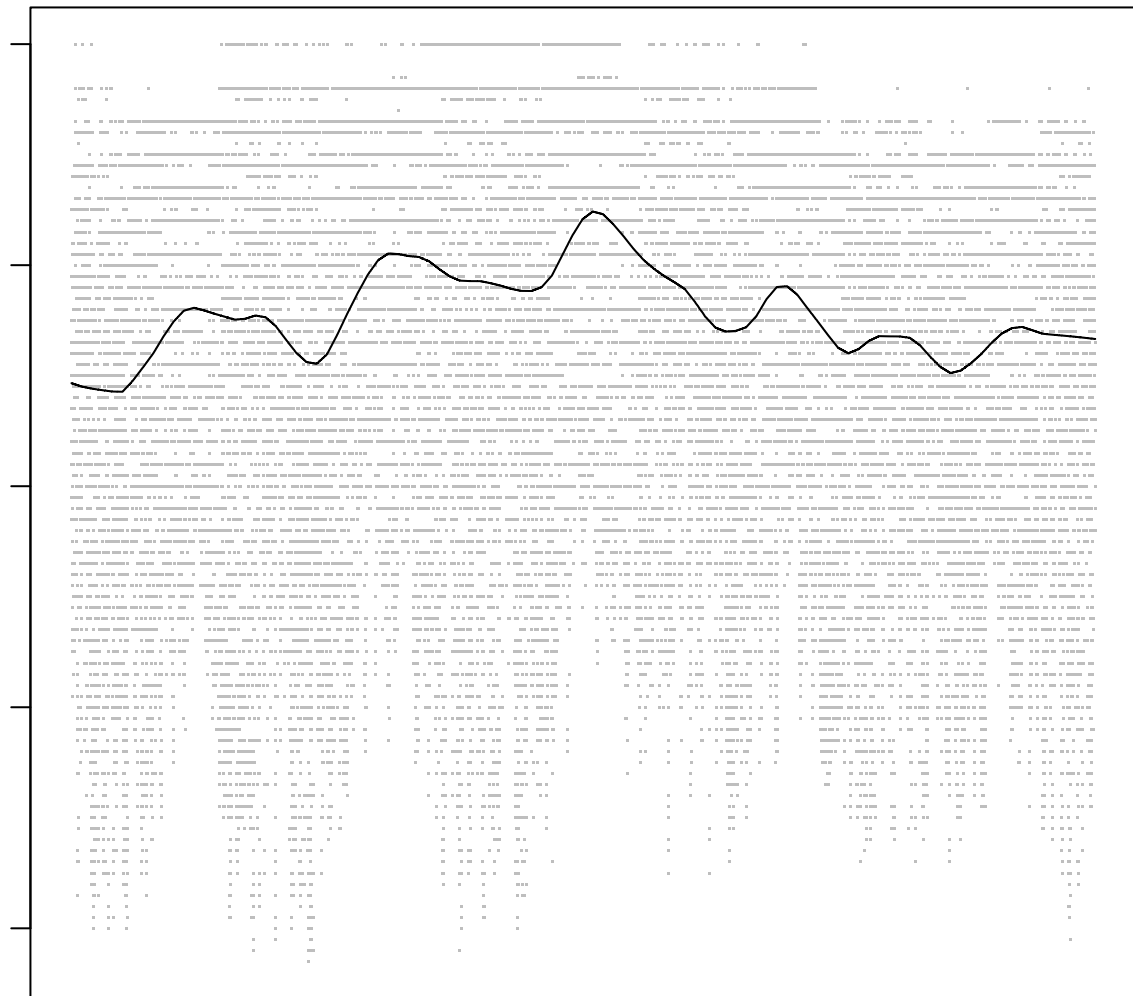
100

80

60

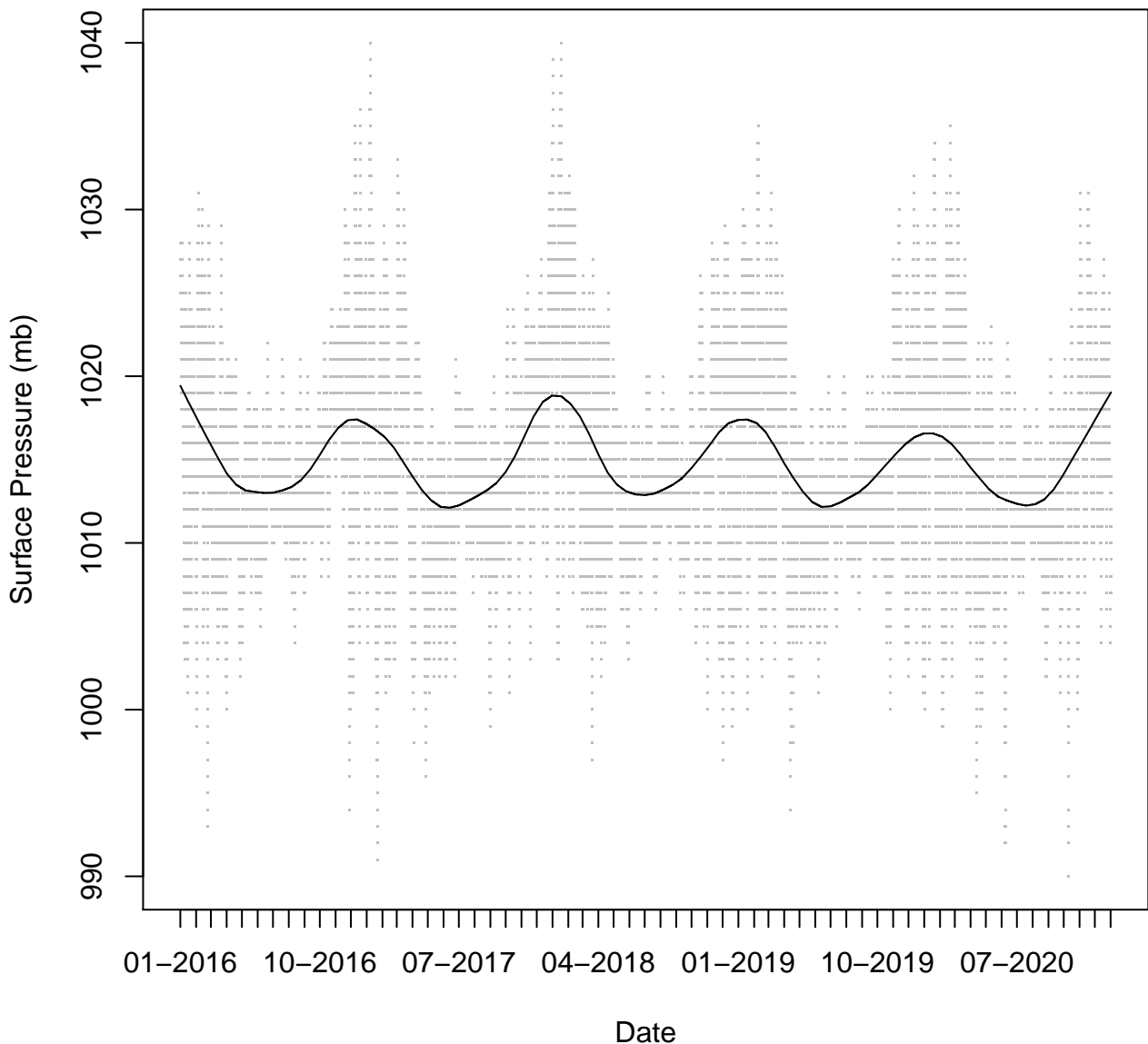
40

20

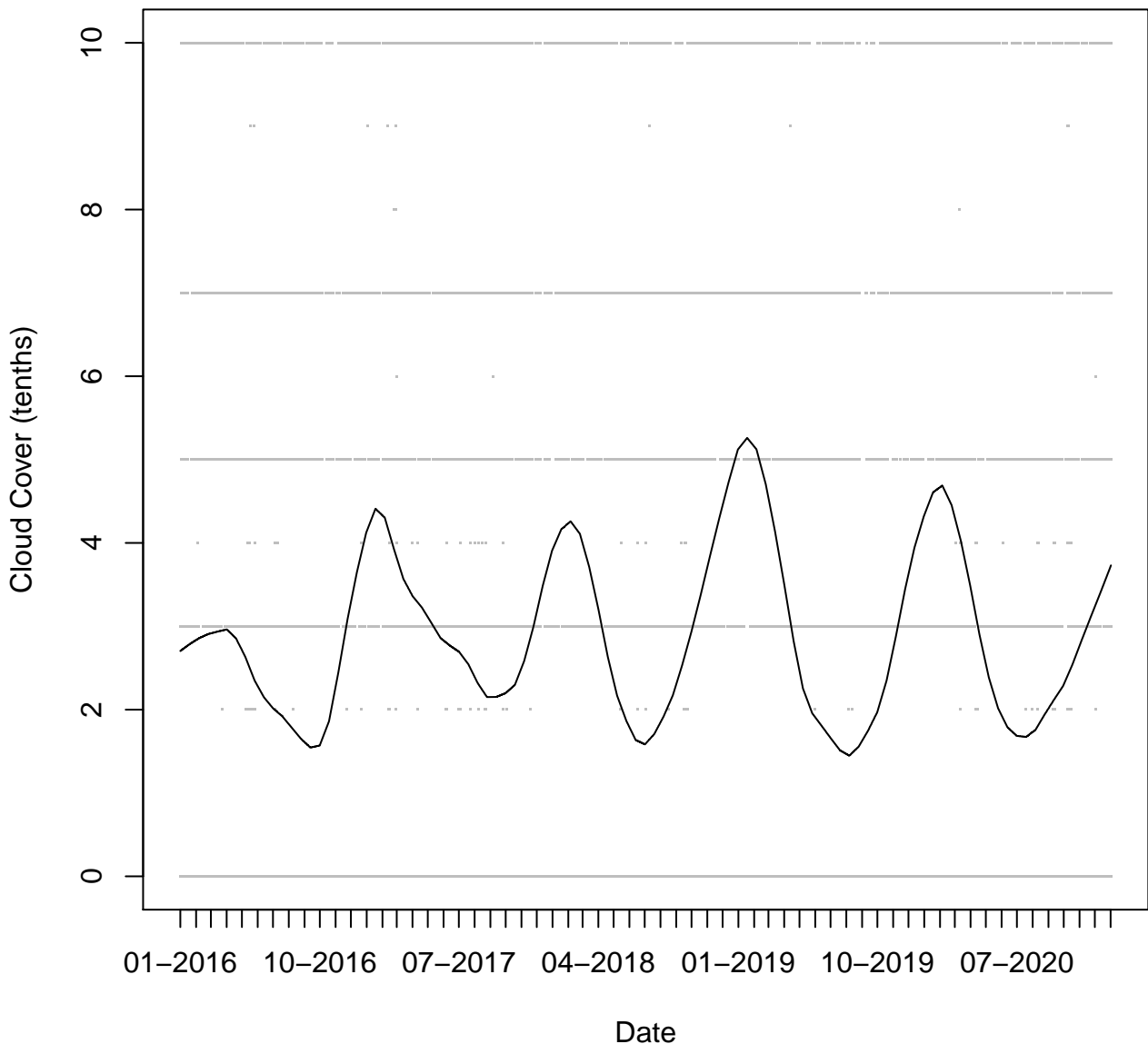


Date

# Surface Pressure

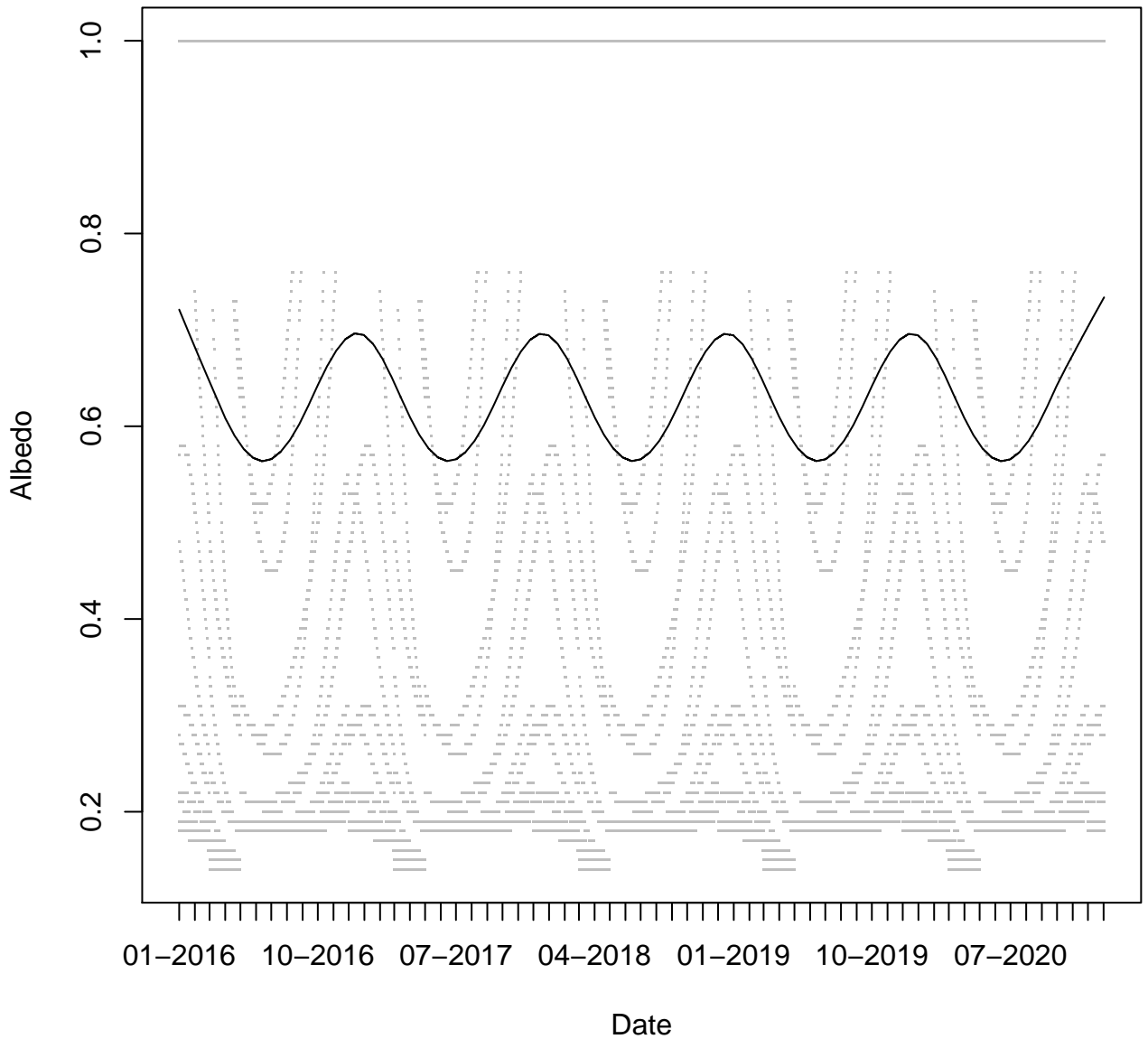


# Cloud Cover

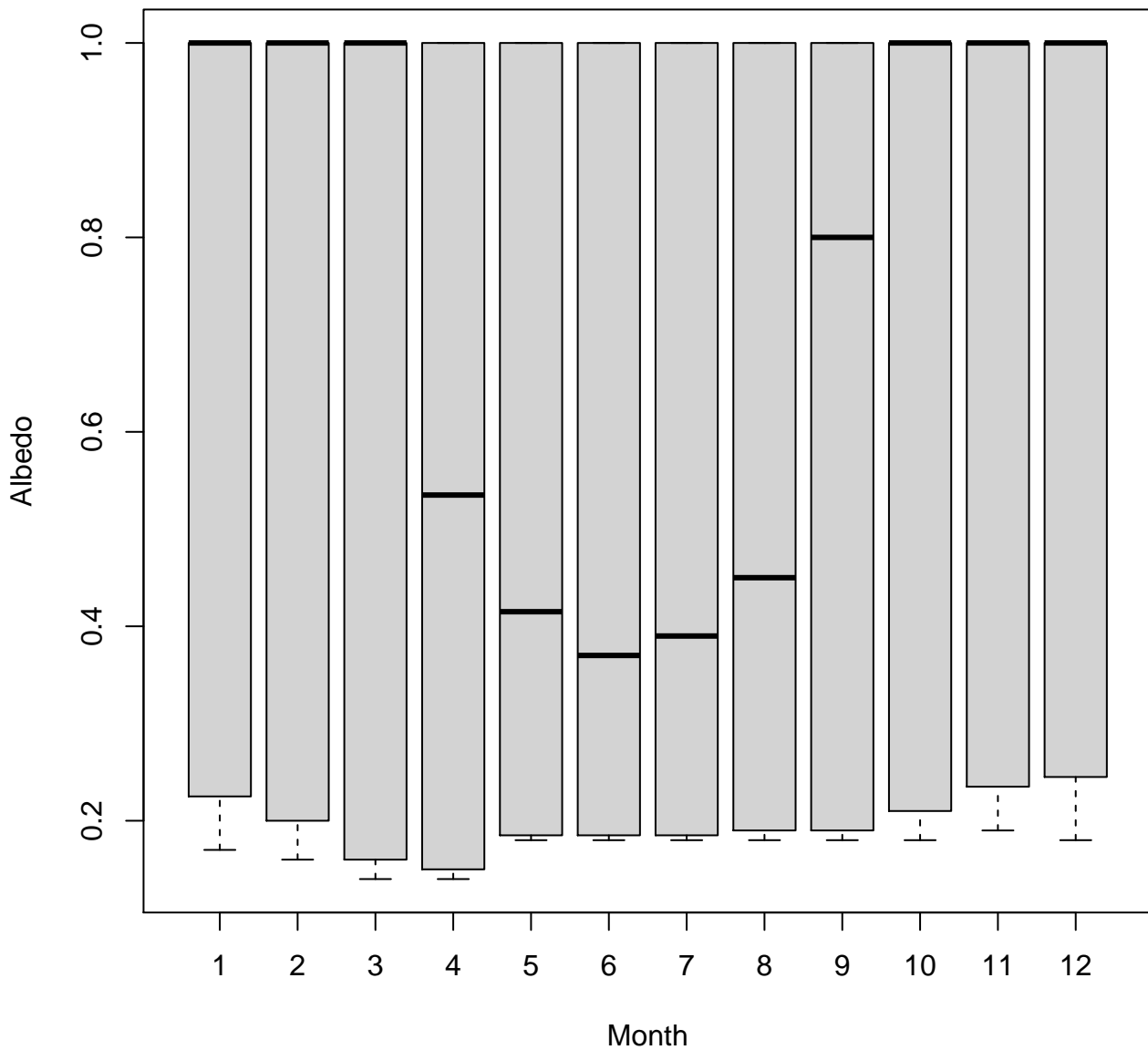




# Albedo



**Albedo by Month**



Albedo by Hour

