

# MISSISSIPPI RESTORATION SUMMIT 2018



MISSISSIPPI DEPARTMENT OF  
ENVIRONMENTAL QUALITY

GARY RIKARD, EXECUTIVE DIRECTOR, MDEQ

CHRIS WELLS, DIRECTOR, OFFICE OF RESTORATION, CHIEF OF STAFF MDEQ

# NRDA MS TIG UPDATE



# NRDA MS TIG UPDATE

## MEMBERS OF THE MS TIG



MISSISSIPPI DEPARTMENT OF  
ENVIRONMENTAL QUALITY



THE MS TIG IS WORKING ON 2 ITEMS:

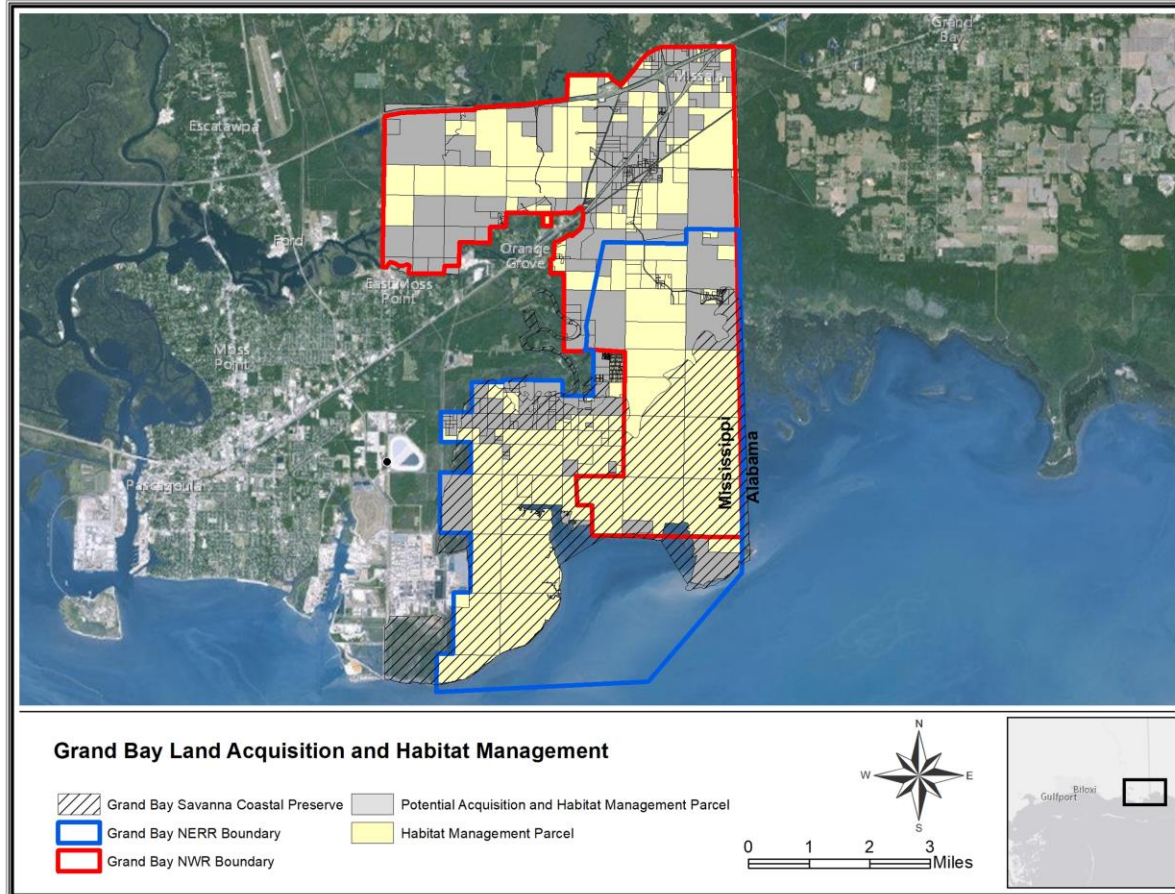
- SUPPLEMENT TO RESTORATION PLAN #1 – GRAND BAY LAND ACQUISITION AND HABITAT MANAGEMENT-ADDITIONAL FUNDS
- RESTORATION PLAN #2



MISSISSIPPI DEPARTMENT OF  
ENVIRONMENTAL QUALITY

# NRDA MS TIG UPDATE – RESTORATION PLAN #1A

## Supplement to Restoration Plan 1- Grand Bay Land Acquisition and Habitat Management



## PROJECT OVERVIEW

**IMPLEMENTING TRUSTEES:** MDEQ and DOI

**PROJECT PARTNERS:** MDMR Coastal Preserves/Grand Bay NERR, USFWS

**PDARP GOALS:**

- Restore and Conserve Habitat: Wetlands, Coastal, and Nearshore Habitats
- Replenish and Protect Living Coastal and Marine Resources: Birds

## Supplement Intent:

We are considering increasing the budget to expand the habitat management, enhance the monitoring and adaptive management, and potentially acquire more properties/habitat in the Grand Bay Area.



# NRDA MS TIG UPDATE – RESTORATION PLAN #2

## NRDA Restoration Types Considered for **RP#2**:

- Wetlands, Coastal, and Nearshore Habitats
  - Nutrient Reduction (Nonpoint Source)
    - Oysters
    - Sea Turtles
    - Marine Mammals



# NRDA MS TIG UPDATE – PLANNING SCHEDULE RP #2

## Tentative Planning Schedule (16-20 months)

- **June 11, 2018:** Notice to the Public to Solicit Project Ideas
  - <https://www.mdeq.ms.gov/restoration/project-portal/>
  - <http://www.gulfspillrestoration.noaa.gov/restoration/give-us-your-ideas/suggest-a-restoration-project/>
- **August 10, 2018:** Project Ideas submittal deadline
- **October 5, 2018:** Notice of Initiation of Restoration Planning in Mississippi
- **November 13, 2018:** Status of the MS TIG Planning Activities
- **Spring 2019:** Draft RP/EA (Restoration Plan 2)
- **Late 2019:** Final RP/EA (Restoration Plan 2)

