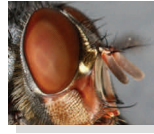


The Mississippi Environmental Education Alliance Announces



2015 Teacher Professional Development Workshops

March 10, 2015
Tuesday
9 AM – 3:30 pm



Private Eye

Rankin County Extension Office
601 Marquette Road
Brandon, MS 39042

This is an exciting curriculum that uses a jeweler's loupe to change the scale of investigation and encourage focused, close scrutiny of objects. Students think by analogy about what they see, and theorize as to why what they saw is the way it is. It's a really fun way to investigate things and encourages creative thinking that then can be used across the curriculum. www.the-private-eye.com

Contact Person: Janet Chapman, 601.961.5266

Extension Office, 601.825.1462 (location questions only)

March 12, 2015
Thursday
9 AM – 3:30 pm



Project Learning Tree

Belden Center, Itawamba Community College
3200 Adams Farm Rd.
Belden, MS 38826 (next to Tupelo)



Project Learning Tree (PLT) is an award-winning environmental education program for teachers and other educators, parents, and community leaders working with youth from pre-K through grade 12. PLT uses the forest as a "window into the world" to increase students' understanding of our complex environment; stimulate critical and creative thinking; develop the ability to make informed decisions on environmental issues; and instill the confidence and commitment to take responsible action. www.plt.org

Contact Person: Janet Chapman, 601.961.5266

Itawamba Community College: www.iccms.edu for driving directions

March 31- April 2, 2015
Times TBA

This Coastal birds workshop is embedded in a 3-day **TOTE (Teachers On The Estuary)** workshop jointly sponsored with MMNS and GBNERR. Limited dormitory space is available. Contact Jennifer for details and to register for the complete TOTE workshop, or just Flying Wild.



Flying Wild, a TOTE workshop

Grand Bay National Estuarine Research Reserve
6005 Bayou Heron Road
Moss Point, MS 39562
www.grandbaynerr.org

Through activities involving language arts, social science and math experiences, coupled with community outreach and service learning applications, *Flying WILD* offers a whole-school approach to environmental education using birds as the focus. Targeted for the middle-school audience, though widely adaptable, *Flying WILD* offers practical hands-on classroom and outdoor field investigation experiences connecting real-world experiences in bird biology, conservation and natural history. www.flyingwild.org Contact Person: Jennifer Buchanan, 228.475.7047, Education Coordinator, MDMR's Grand Bay NERR

All Participants Receive

- Free CEUs (if desired)
- The workshop curriculum guide
- Lunch and snacks
- Free one year MEEA Membership

How To Register

Pre-register online at www.meea2015workshops.weebly.com. A \$15 pre-registration fee is needed to secure your place. Send your check made out to MEEA to Peggy Guyton, Treasurer, P. O. Box. 43, Mayhew, MS, 39753 (For Flying Wild TOTE workshop, also contact Jennifer Buchanan, 228.475.7047.)

Sponsors: Nonpoint Source Grant from USEPA to MS Dept of Environmental Quality under the provisions of section 319 of the Clean Water Act, MS Coastal Plains RC&D Council, Itawamba Community College, Rankin County Extension Service, US Fish and Wildlife Service, MS Dept of Marine Resources, Grand Bay NERR, and Mississippi Museum of Natural Science (MMNS)