

# Mississippi Updated Priority Watersheds

September 19, 2024



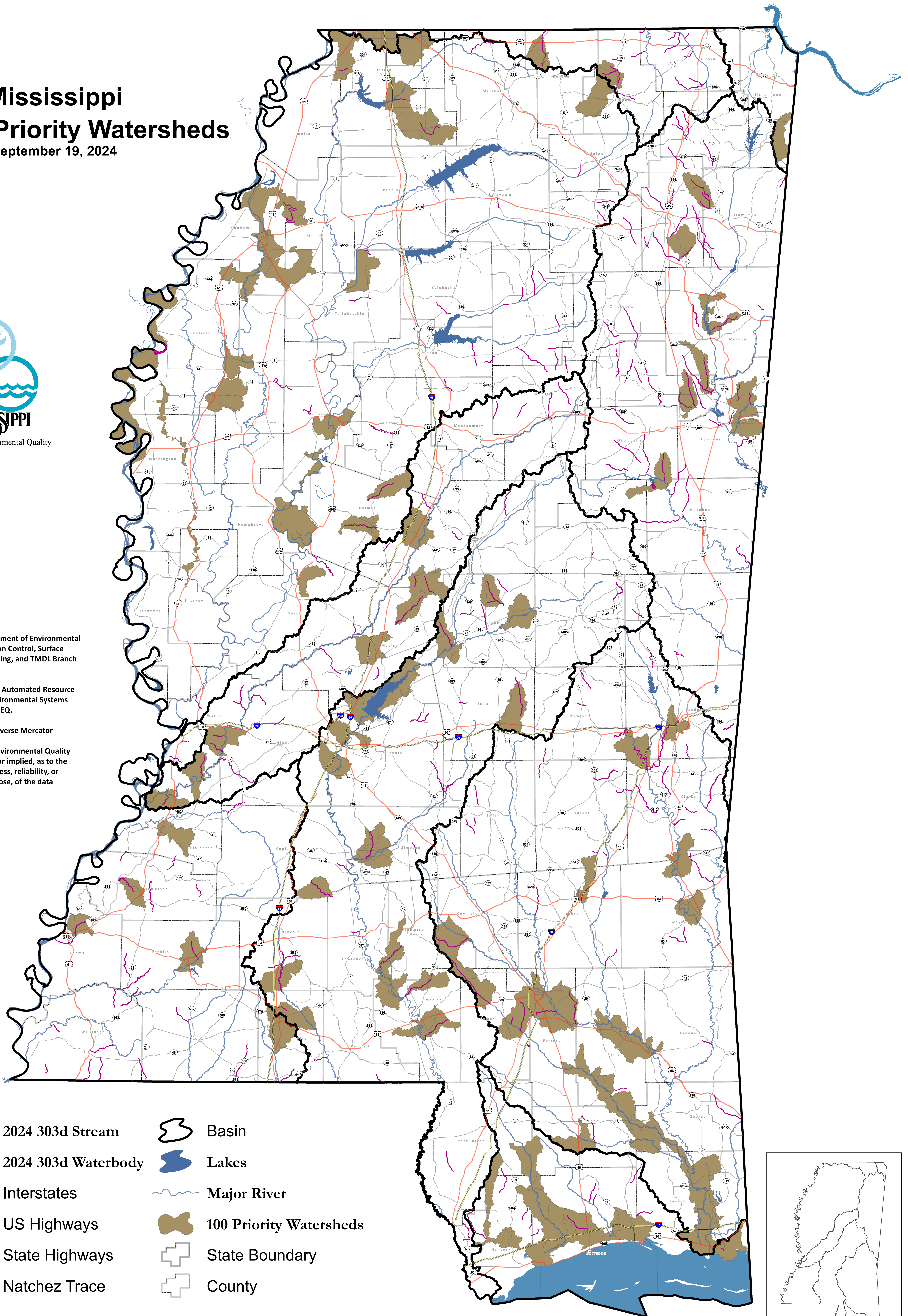
MISSISSIPPI  
Department of Environmental Quality

This map produced by the Department of Environmental Quality (MDEQ), Office of Pollution Control, Surface Water Division, Standards, Modeling, and TMDL Branch on September 19, 2024.

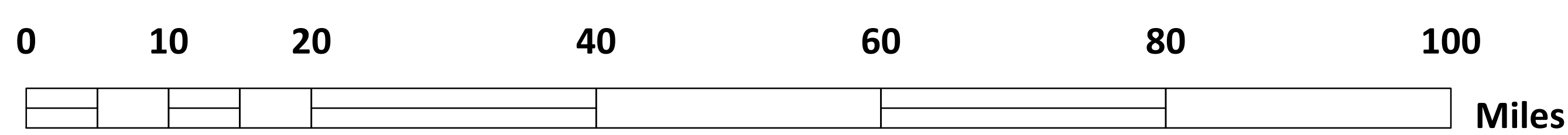
All map data are from Mississippi Automated Resource Information System (MARIS), Environmental Systems Research Institute (ESRI), and MDEQ.

Map Projection: Mississippi Transverse Mercator

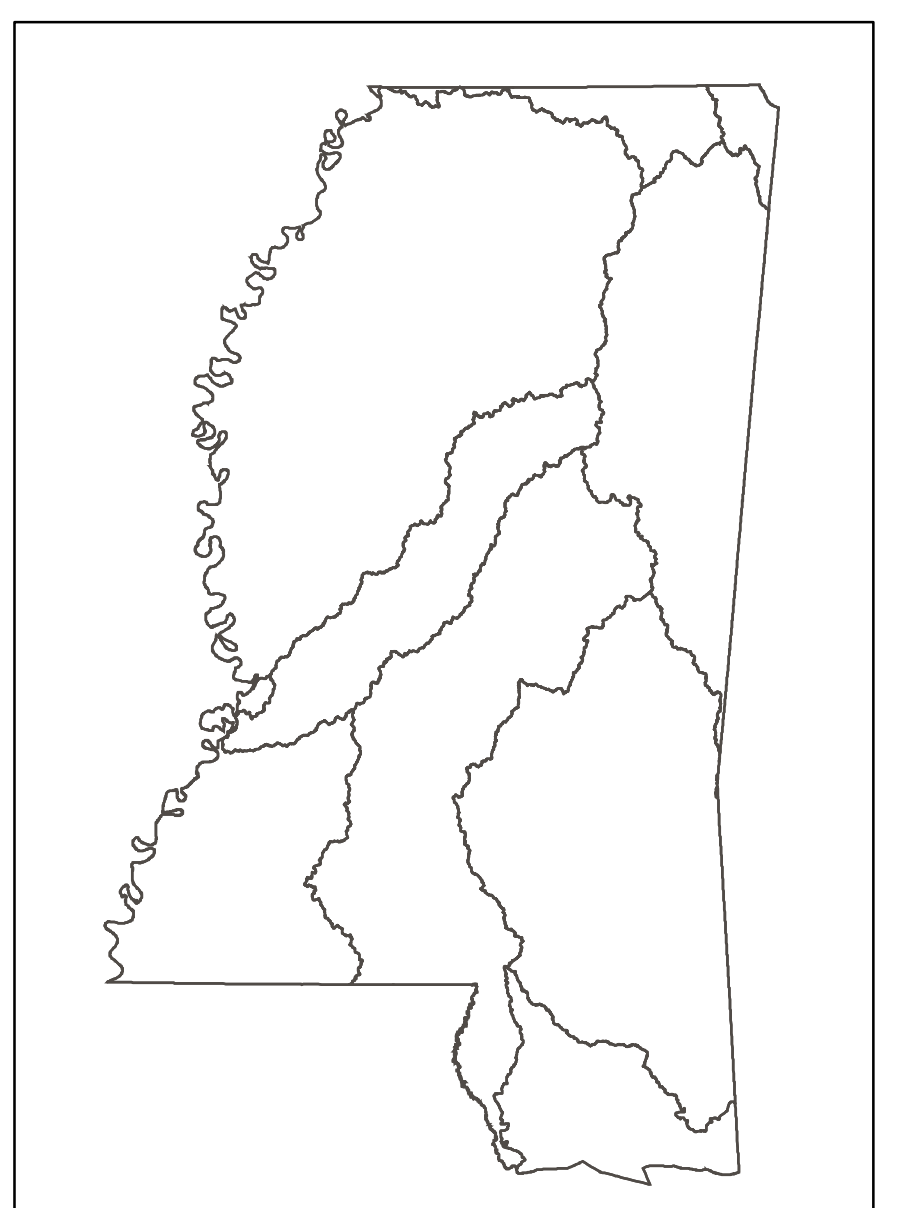
The Mississippi Department of Environmental Quality makes no warranties, expressed or implied, as to the accuracy, completeness, currentness, reliability, or suitability for any particular purpose, of the data contained on this map.



- |                     |                         |
|---------------------|-------------------------|
| 2024 303d Stream    | Basin                   |
| 2024 303d Waterbody | Lakes                   |
| Interstates         | Major River             |
| US Highways         | 100 Priority Watersheds |
| State Highways      | State Boundary          |
| Natchez Trace       | County                  |



1:500,000



Mississippi Basins