

MISSISSIPPI BENEFICIAL USE/MARSH RESTORATION

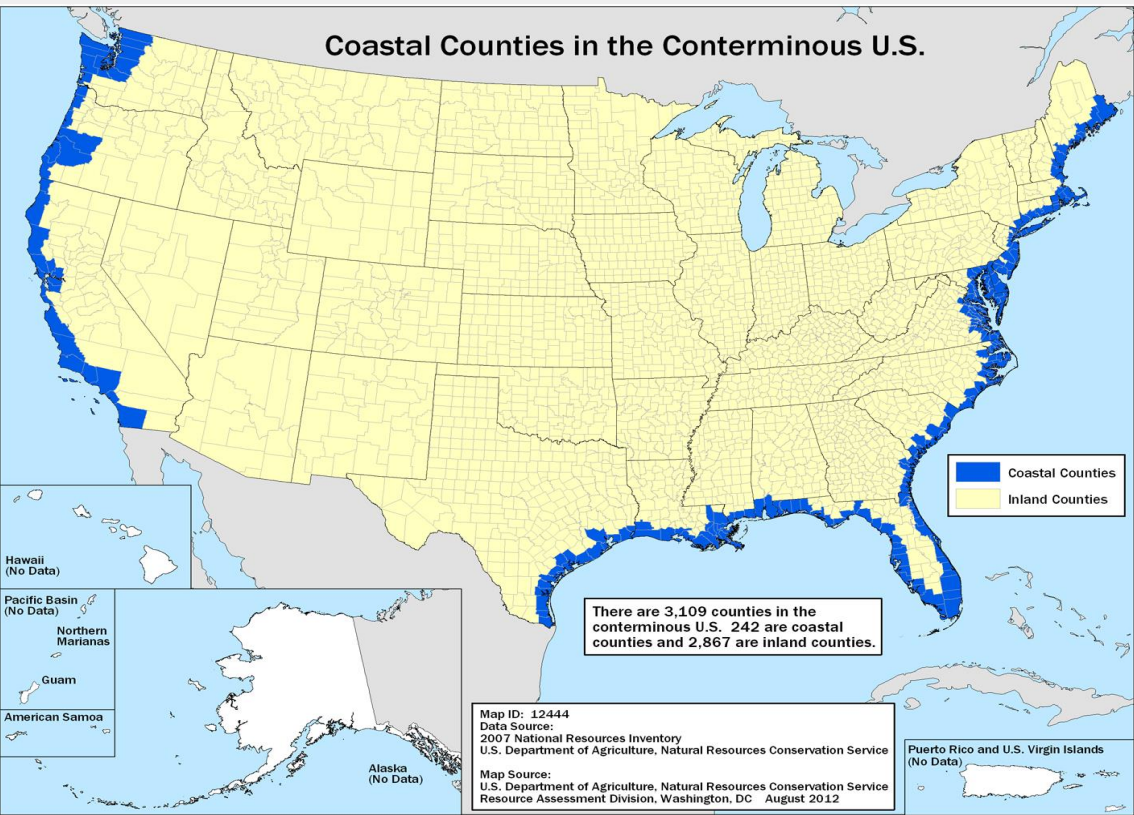
GOALS, RESTORATION OBJECTIVES, AND PROGRESS

JARED HARRIS— BENEFICIAL USE PROGRAM MANAGER, MS DEPARTMENT OF MARINE RESOURCES

BEN BENVENUTTI— SENIOR ENGINEER, COVINGTON CIVIL AND ENVIRONMENTAL



Coastal Counties in the Conterminous U.S.



COASTAL ZONE



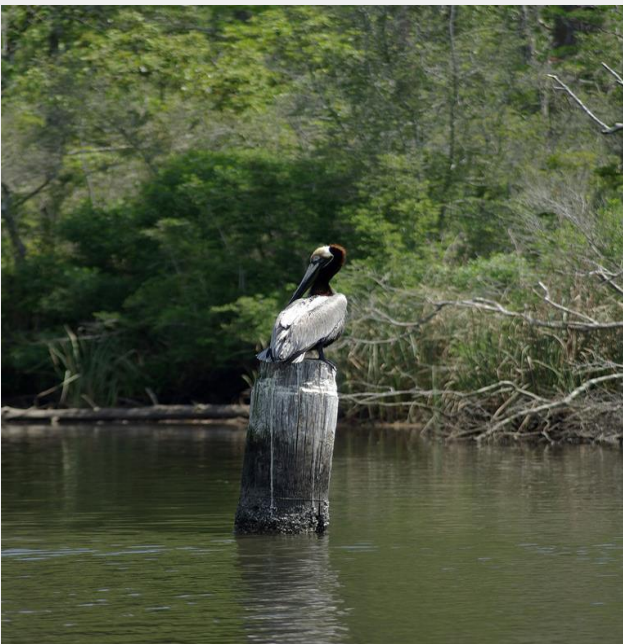
2017 RESTORATION SUMMIT

Esri, DeLorme, GEBCO, NOAA NGDC, and other contributors; Esri, HERE, DeLorme, MapmyIndia, © OpenStreetMap contributors, and the GIS user community. Sources: Esri, GEBCO, NOAA, National Geographic, DeLorme, HERE, Geonames.org, and other contributors.

QUALITY OF LIFE IN THE COASTAL ZONE

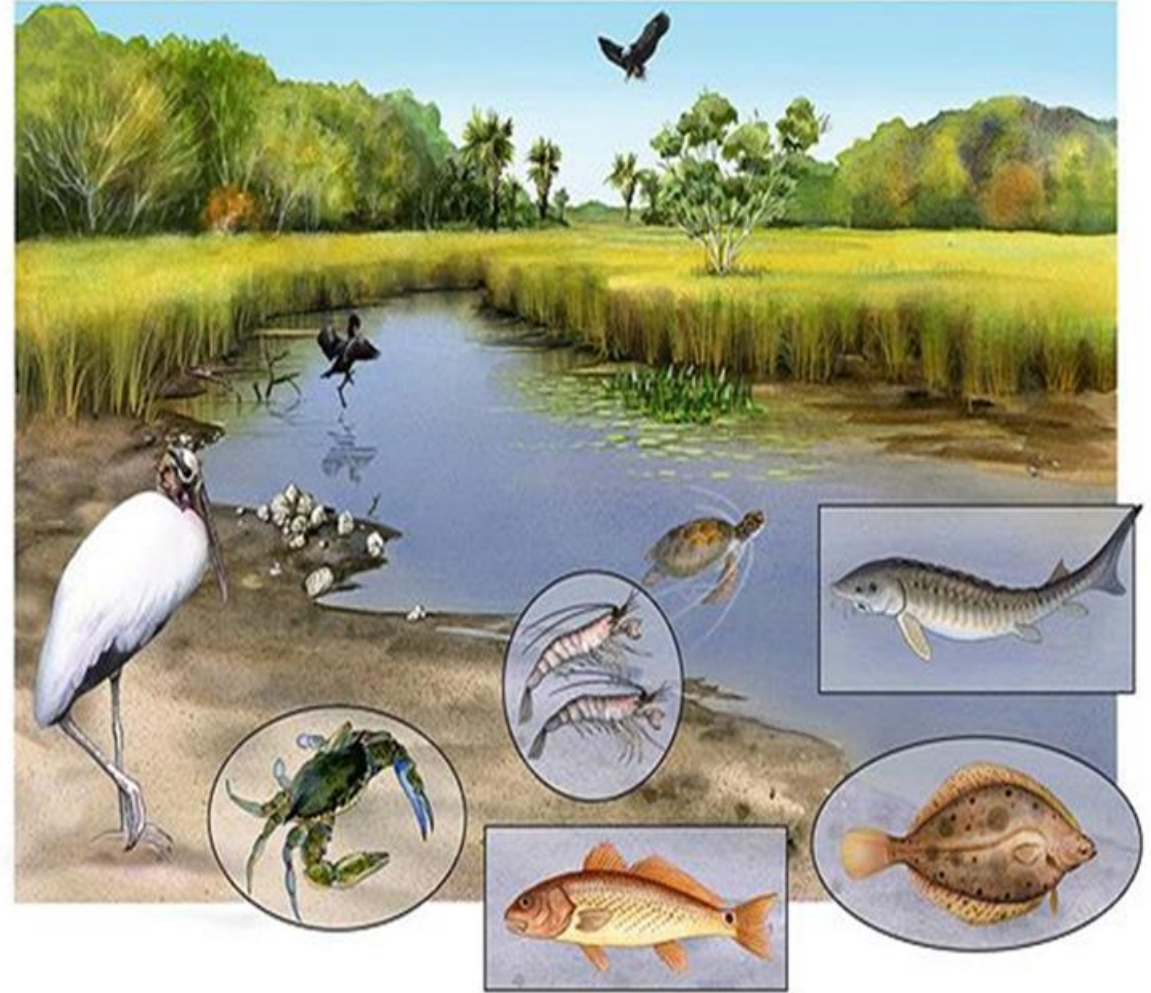


ENVIRONMENTAL QUALITY IN THE COASTAL ZONE



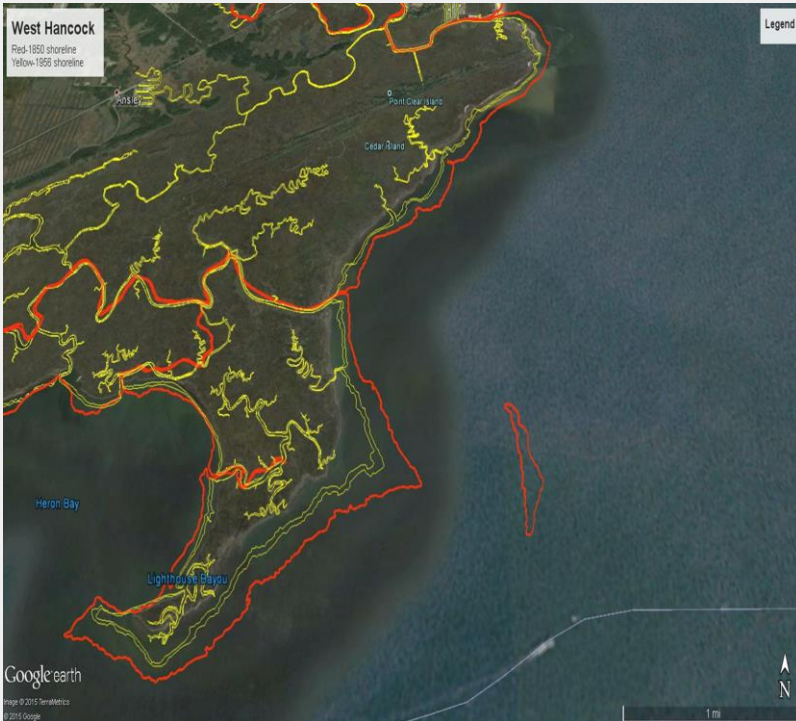
2017 RESTORATION SUMMIT

MARSH HABITAT



2017 RESTORATION SUMMIT

MARSH HABITAT LOSS AND THE NEED FOR RESTORATION



It is estimated that as many as 10,000 acres of marsh and island habitat have been lost since the 1950's in Mississippi



HISTORY OF THE MS BENEFICIAL USE PROGRAM

- **2001** – Corps and DMR Identify potential BU sites
- **2001** – DMR develops the *Long-Term Comprehensive Master Plan for Beneficial Uses of Dredged Material along Coastal Mississippi*
- **2002** – Deer Island Marsh Restoration (DIMR1)
- **2007** – Greenwood Island
- **2008** – Beneficial Use Group (BUG) formed; State and Federal agencies and private stakeholders
- **2010** – House Bill 1440 passed; Coastal Wetlands Protection Act § 49-27-61 effective July 1, 2010
- **2011** – BU Master Plan Update
- **2011** – DIMR2 permitted
- **2012** – Round Island permitted
- **2017** – Engineering and Design for DIMR4



MISSISSIPPI BENEFICIAL USE LAW

- Requires BU for materials dredged from wetland areas of Mississippi
- Applicable if over 2,500 cubic yards (cy) are removed for a project
- Exemptions
 - projects conducted by an exempt governmental agency
 - projects conducted under governmental grant of bond proceeds
 - projects that remove 2,500 cy or less



REMEMBER “FOOD FOR THOUGHT”



2017 RESTORATION SUMMIT

MARSH RESTORATION PRIORITIES



Creation



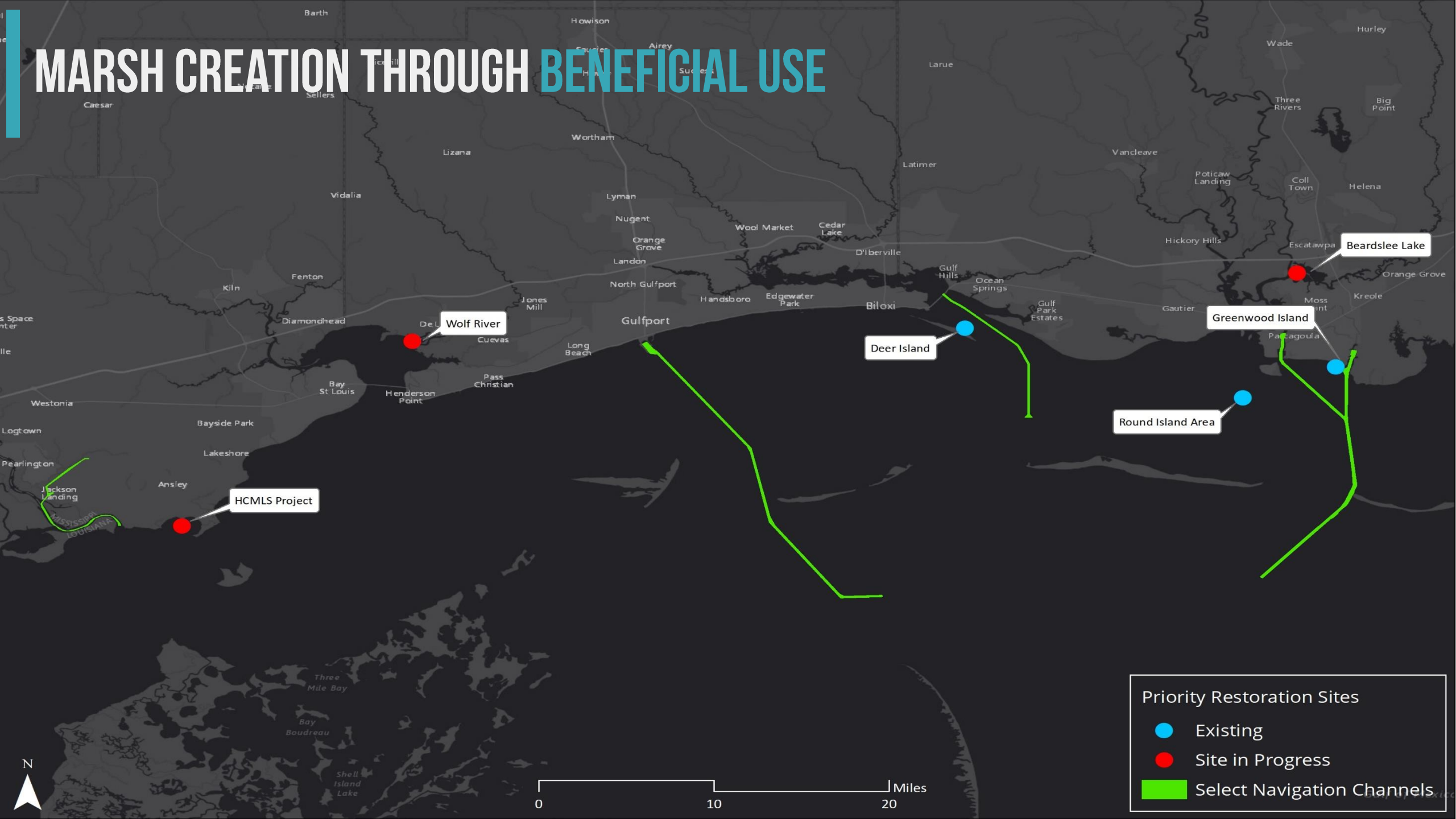
Protection



Facilitation of Marsh Migration

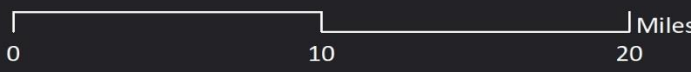


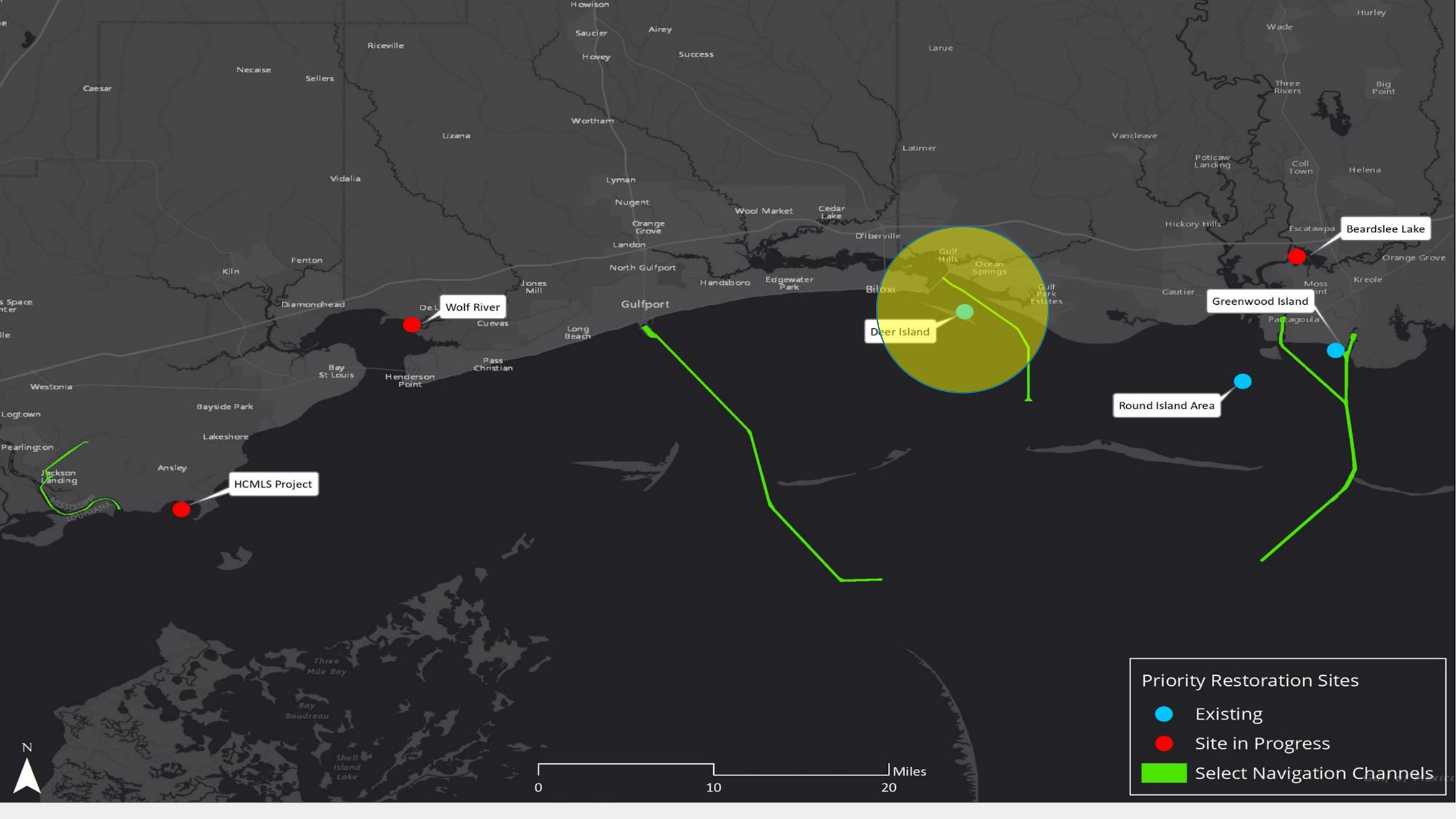
MARSH CREATION THROUGH BENEFICIAL USE



Priority Restoration Sites

- Existing
- Site in Progress
- Select Navigation Channels



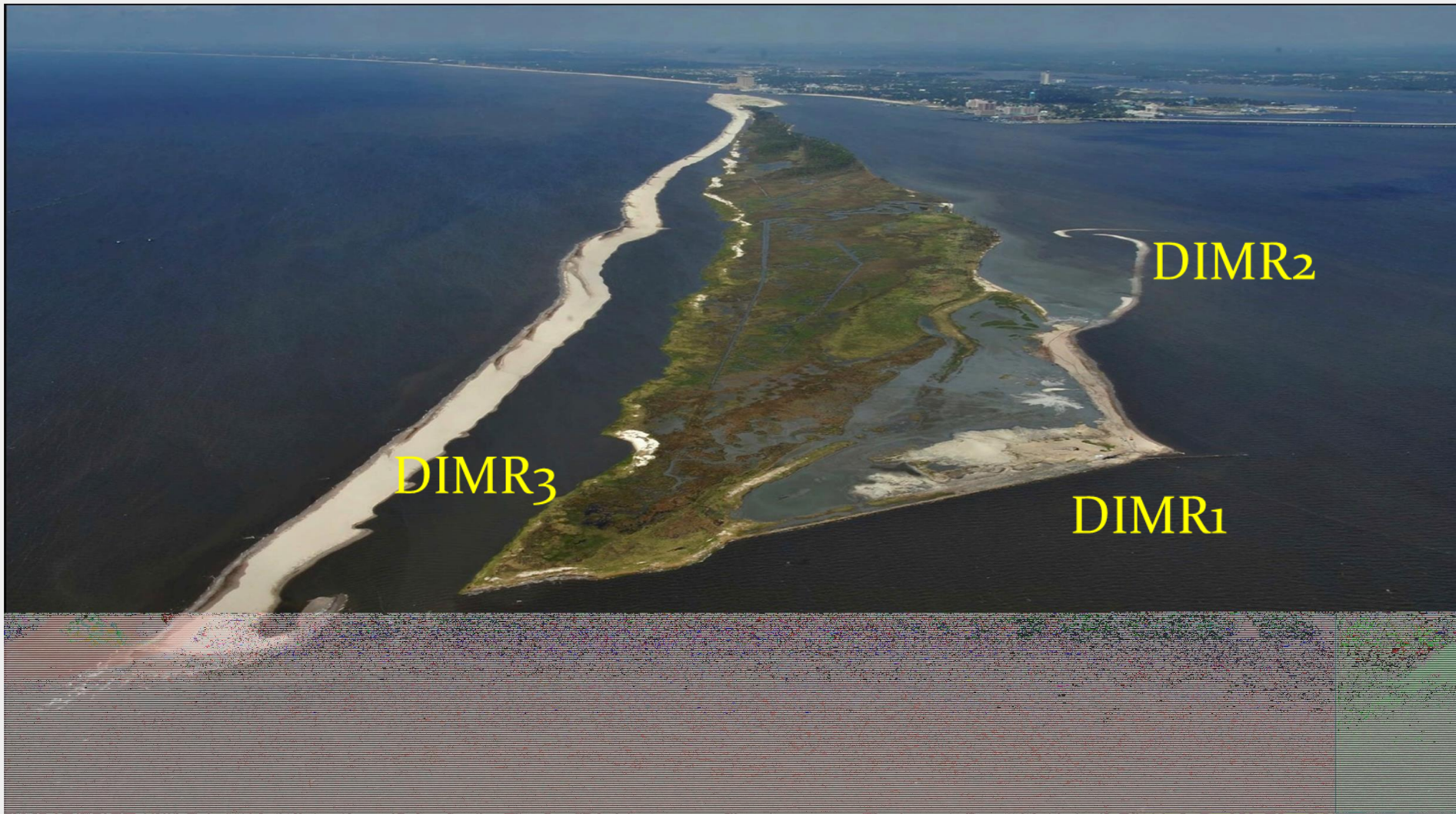


Priority Restoration Sites

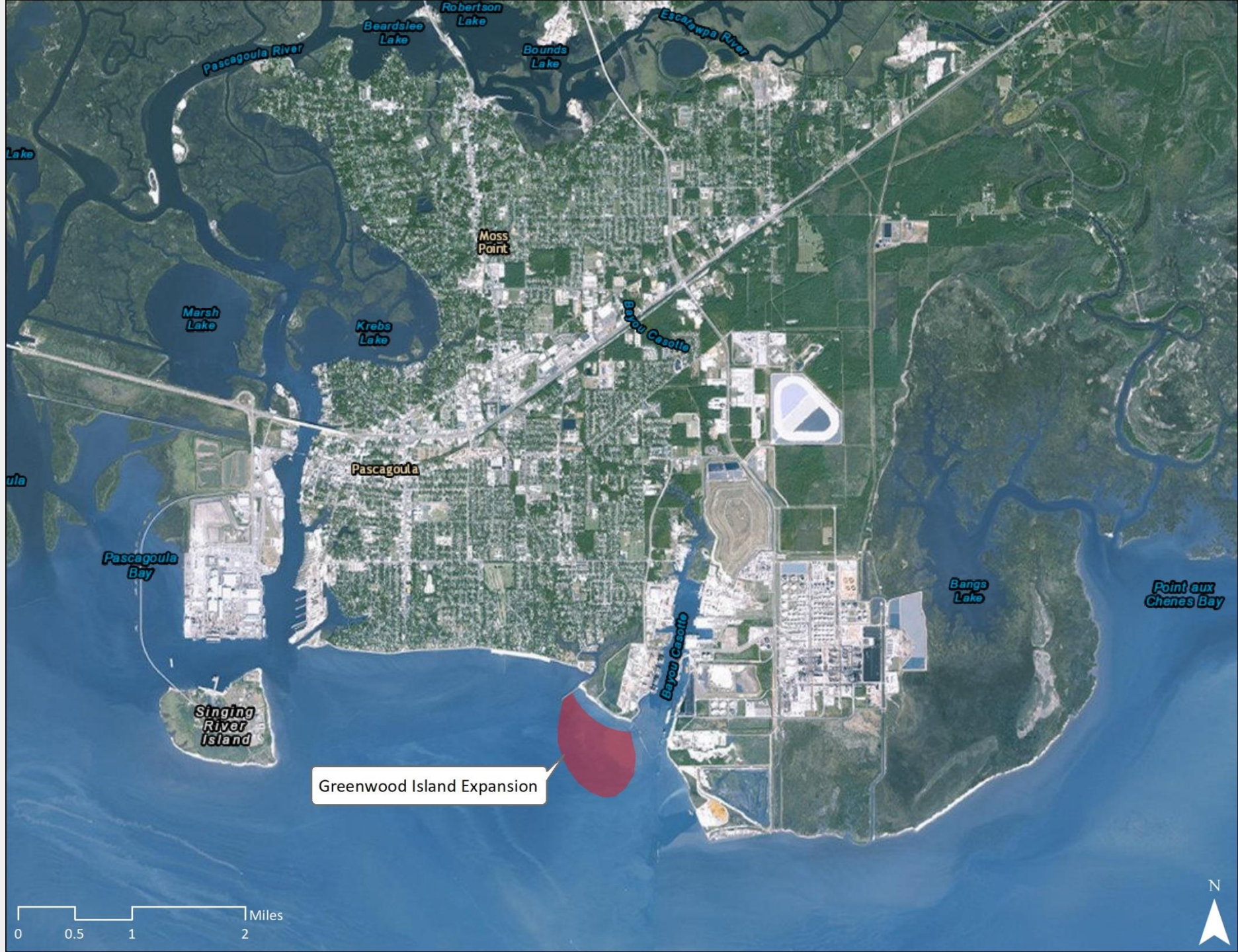
- Existing
- Site in Progress
- █ Select Navigation Channels



MARSH CREATION: DEER ISLAND



MARSH CREATION: GREENWOOD ISLAND



2017 RESTORATION SUMMIT

Greenwood Island Expansion

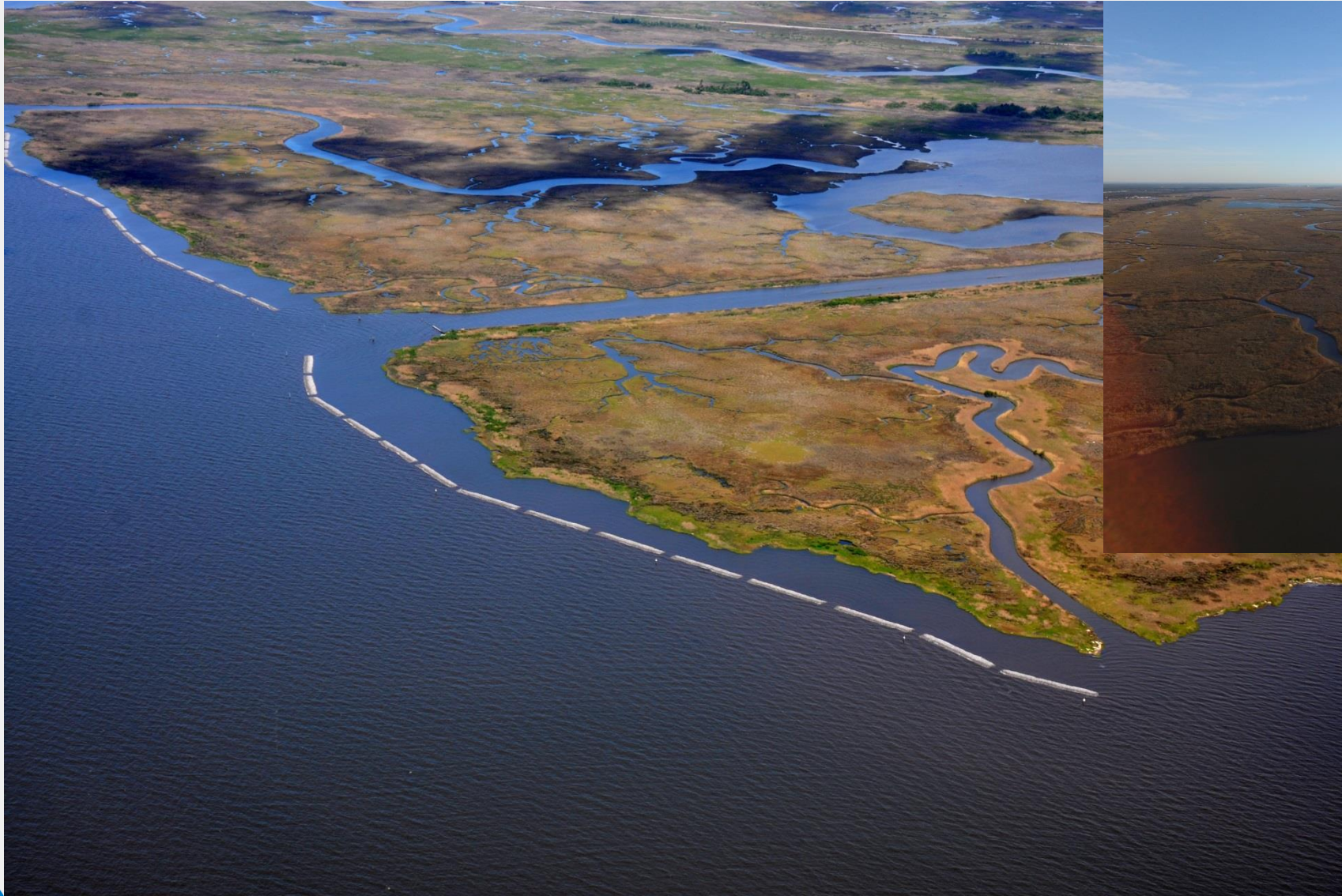


MARSH CREATION: NEW ROUND ISLAND





MARSH PROTECTION: HANCOCK COUNTY LIVING SHORELINE

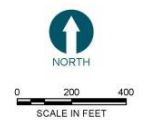


2017 RESTORATION SUMMIT

MARSH CREATION: HERON BAY



- LEGEND:
- PERMITTED MARSH PLACEMENT BOUNDARY
 - PROBE LOCATION
 - ▨ DELL PROPERTY BOUNDARY (APPROXIMATE)
 - CULTURAL RESOURCE AREA



- NOTES:
1. HORIZONTAL DATUM: MISSISSIPPI STATE PLANES EAST ZONE, NAD 83, U.S. FEET.
 2. VERTICAL DATUM: NORTH AMERICAN VERTICAL DATUM OF 1988 (NAVD88).
 3. 0.0 FEET MEAN LOWER LOW WATER (MLLW) = -0.3 FEET NAVD88.
 4. AERIAL PHOTOGRAPH PROVIDED BY MICROSOFT CORPORATION AND ITS DATA SUPPLIERS.
 5. PROBING SURVEY PERFORMED BY DIMCO ON JULY 7, 2015.

OVER PRINT AT FULL SIZE IF NOT ONE AND SCALE ACCURATELY

M:\15_2015_03\1507\Anchor\Anchor_OEA_Living Shoreline\Hancock_Co_Living Shoreline\Construction\Revised\1507_C_080815_HEROBAY_MARSH_OEA_C1



2017 RESTORATION SUMMIT

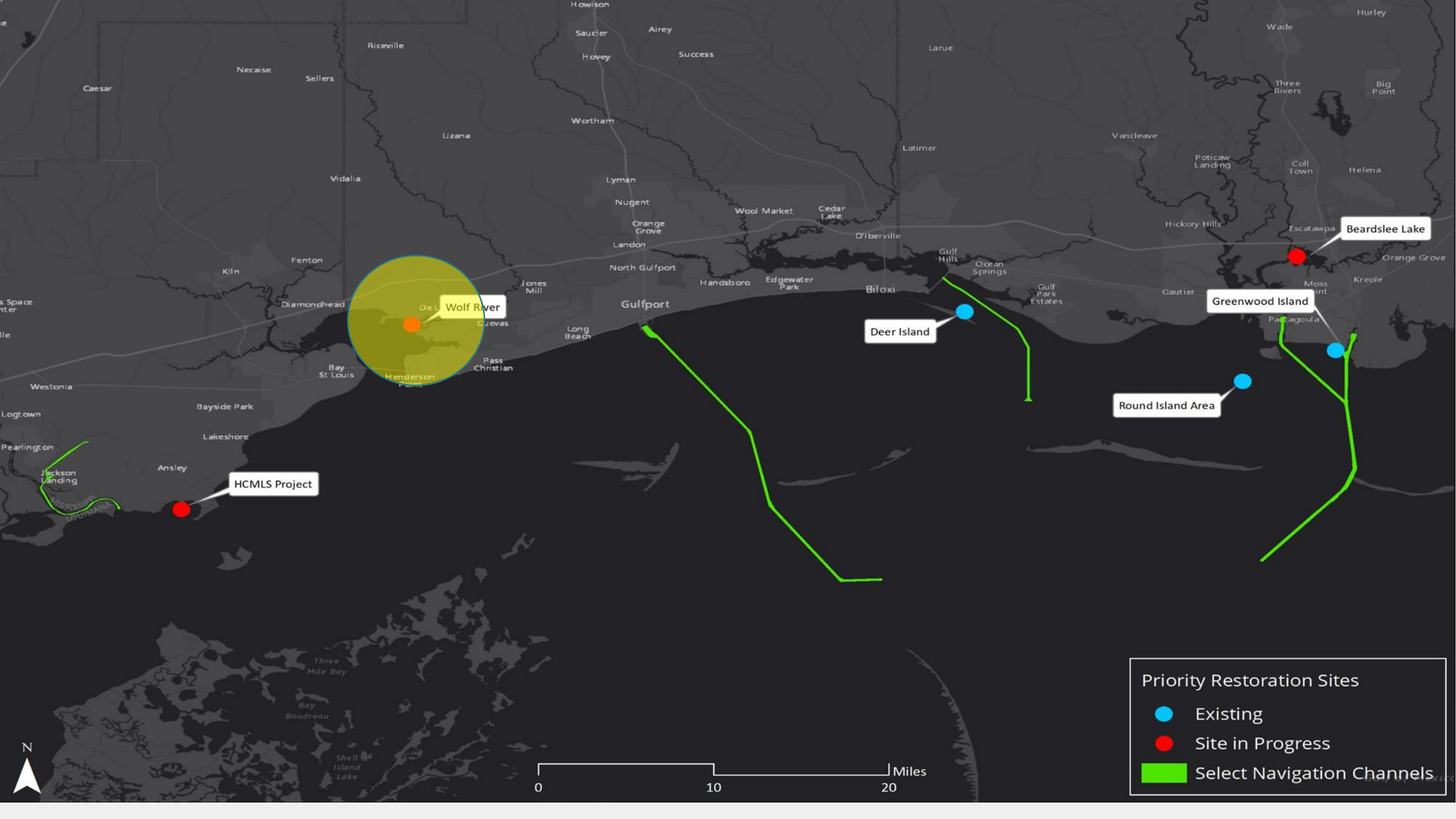


REVISIONS				
REV	DATE	BY	APPD	DESCRIPTION

DESIGNED BY: J. ROBERTSON
 DRAWN BY: J. HOLMES
 CHECKED BY: W. MEARS
 APPROVED BY: W. MEARS
 SCALE: AS NOTED
 DATE: MARCH 2016

HANCOCK COUNTY MARSH LIVING SHORELINE, MS
 HERON BAY MARSH PROBE LOCATIONS FOR PROPOSED MARSH FILL PLACEMENT

C1
 SHEET NO. 1 OF 1



Priority Restoration Sites

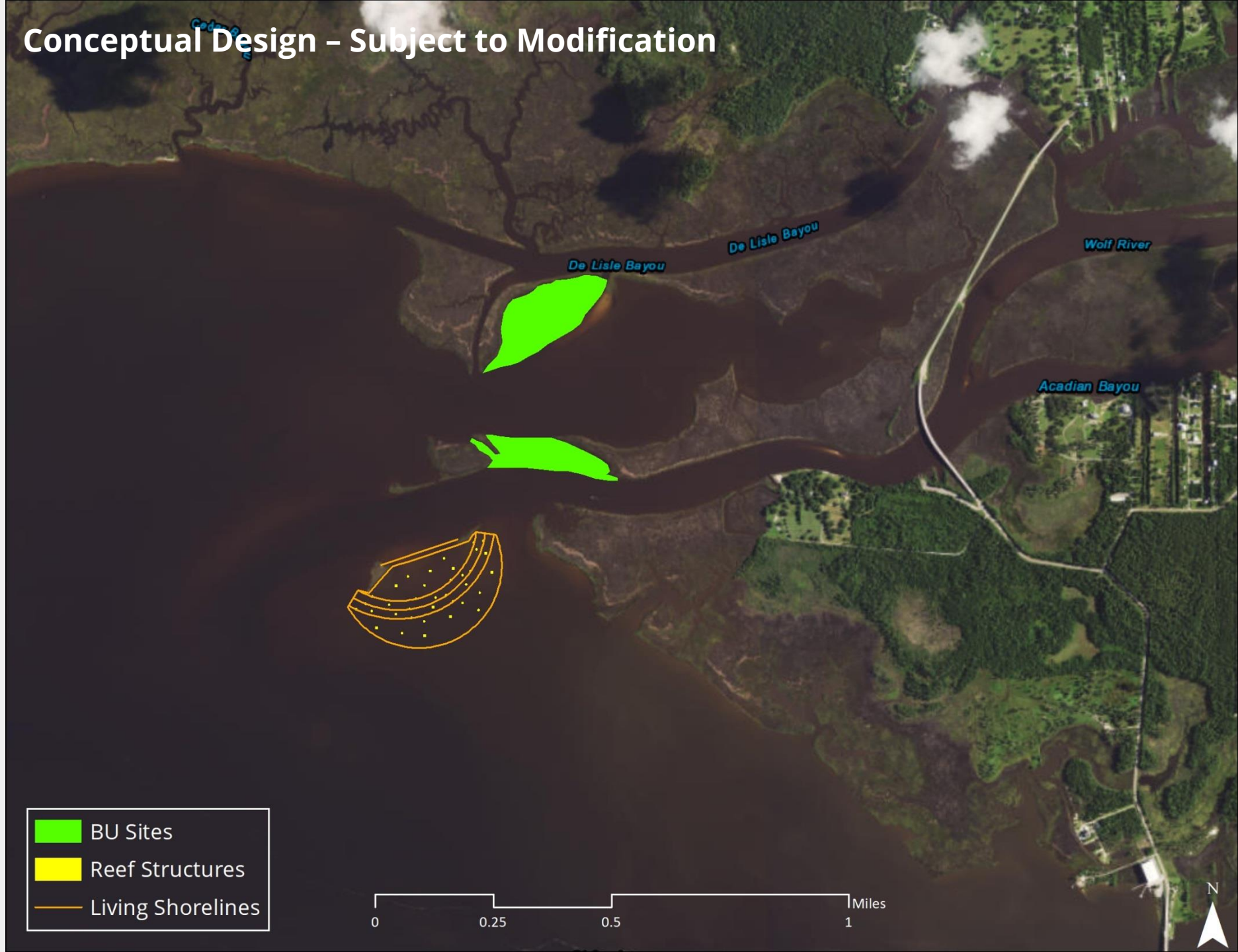
- Existing
- Site in Progress
- Select Navigation Channels

0 10 20 Miles



MARSH CREATION AND PROTECTION: WOLF RIVER

Conceptual Design – Subject to Modification



2017 RESTORATION SUMMIT



Priority Restoration Sites

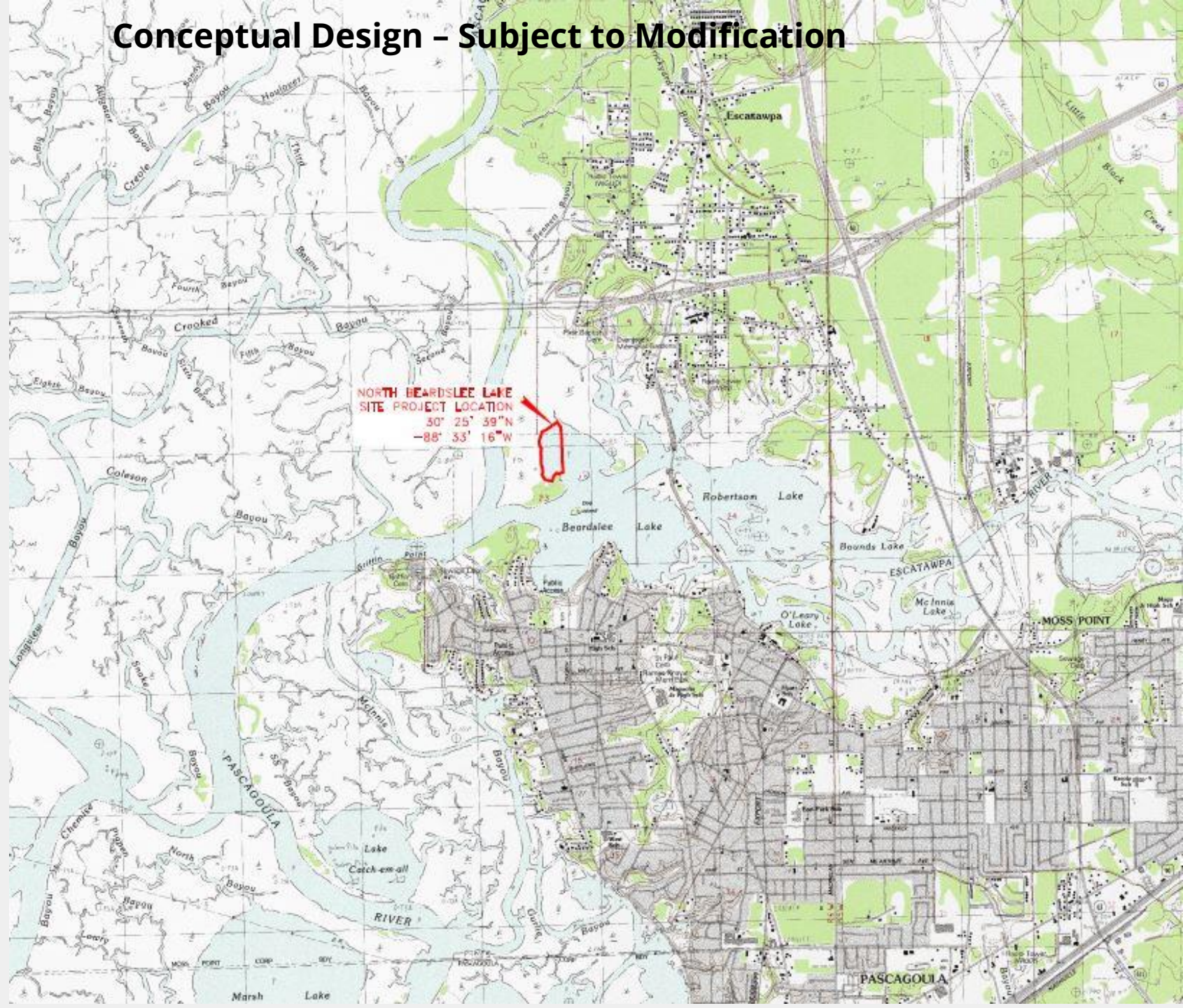
- Existing (Blue dot)
- Site in Progress (Red dot)
- Select Navigation Channels (Green line)

0 10 20 Miles



MARSH CREATION: BEARDSLEE LAKE

Conceptual Design - Subject to Modification



2017 RESTORATION SUMMIT





THANK YOU

For more information, visit www.restore.ms.