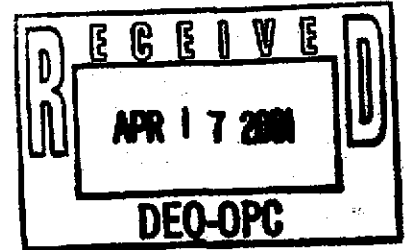


ROBERT L. MARTIN, LG
Principal Geologist

CHRISTINE E. SLAGLE
Principal Scientist

April 14, 2001

Ms. Gretchen Zmitrovich
Office of Pollution Control
Mississippi Department of Environmental Quality
P.O. Box 10385
Jackson, Mississippi 39289-0385



FILE COPY

**SUBJECT: Closure Reports for Medical Center,
Dabney/Smith and Newman Duplex Properties
Crystal Springs, Mississippi**

Dear Ms. Zmitrovich:

Enclosed are two reports each for the referenced properties in Crystal Springs, Mississippi. Remediation of the three properties is complete.

If you have any questions or comments, please contact me at (828) 669-3929.

Sincerely,

MARTIN & SLAGLE GEOENVIRONMENTAL ASSOCIATES, L.L.C

A handwritten signature in cursive script that reads "Robert L. Martin".

Robert L. Martin, L.G.
Principal Geologist

Attachments

cc.: Anastasia Hamel
Hugh Webb
Al Thomas
Tom Lupo
Scott Schang

**BorgWarner
Inc.**

200
South
Michigan
Avenue

Chicago
Illinois
60604

Telephone
312 322 8500

AH-00-1638

VIA UPS NEXT DAY AIR

December 20, 2000

Ms. Gretchen Zmitrovich
Mississippi Department of Environmental Quality
Office of Pollution Control
101 West Capitol Street
Jackson, Mississippi 39201

BorgWarner

Anastasia Hamel
Director, Environmental Programs
BorgWarner Inc.
11955 East Nine Mile Road
Warren, Michigan 48089

Re: **Progress Report of Assessment and Remediation Activities
Kuhlman Electric Corporation and Residential Properties
Crystal Springs, Mississippi**

FILE COPY

Dear Ms. Zmitrovich:

This is a progress report to summarize the assessment and remediation activities related to PCB contamination at Crystal Springs, Mississippi. BorgWarner's last update was October 31, 2000. As you are aware, pursuant to the indemnity agreement between Kuhlman Electric Corporation (KEC) and BorgWarner Inc., BorgWarner has continued the assessment at the KEC plant and began the assessment of residential properties along a drainage channel downgradient of the plant. BorgWarner has also been actively remediating those properties adjacent to the KEC plant for which access was previously granted and sampling was complete.

BorgWarner, as it stated in its October 31, 2000 letter to the Mississippi Department of Environmental Quality (MDEQ), remains committed to working closely with MDEQ, USEPA, local government and KEC in a cooperative manner to accomplish the tasks necessary for the protection of human health and the environment, to the extent that the circumstances are covered by its contractual indemnity to KEC. BorgWarner will continue to seek MDEQ's guidance and direction in its current and future intended activities and to promptly share information.

ACTIONS TAKEN AND PLANNED

1. Delineation of Residential Properties along Jackson and Lee Avenues

BorgWarner promptly and voluntarily began sampling and delineation activities at the residential and commercial properties, adjoining the KEC plant that appeared to or reportedly have been affected by runoff or by the removal of soil from the KEC plant prior to October 6, 1999.

Under MDEQ's supervision, BorgWarner conducted delineation activities of these properties during the month of August, 2000. A total of eighteen (18) properties were investigated, which were:

1. Perry Smith, 219 North Jackson Street
2. Stringer Funeral Home, 301 North Jackson Street
3. Stringer Rental Property, 303 North Jackson Street
4. Harold and Suzanne Warren, 403 North Jackson Street
5. Elnor Wright, 401 North Jackson Street
6. Sonny Reeves, 405 North Jackson Street
7. Brent Property, 403 Lee Avenue
8. Louie Lang/David Vinson, 407 North Jackson Street
9. Jerry Youngblood, 100 Lamar St.
10. Medical Clinic, Lee Avenue
11. Edwards Property, 406 Lee Avenue
12. Garment Shop, 414 Lee Avenue
13. Frazier Property, 405 Lee Avenue
14. Duplex Property, 408/410 Lee Avenue
15. Kellum Property, 412 Lee Avenue
16. Dabney/Smith Property, 215 North Jackson
17. Cooper Property, 409 North Jackson
18. Larry and Carol Wright, 305 North Jackson

BorgWarner acted under the continuous guidance and direction of the MDEQ with respect to delineation activities at the residential and commercial properties adjoining the KEC plant. Split samples were analyzed and QA/QC procedures were implemented by two laboratories experienced with polychlorinated biphenyl analysis. Samples were frequently split with on-site MDEQ representatives for MDEQ's independent analysis, which to our knowledge consistently correlated with BorgWarner's on-site and off-site laboratory analytical results.

The delineation activities were conducted utilizing the "US EPA, Region IV Environmental Investigations Standard Operating Procedures and Quality Assurance Manual," May 1996 (EISOPQAM), sampling and analytical protocols. A copy of the work plan with procedures used in the field and applicable sections of the EISOPQAM are attached to this report for reference purposes.

Upon completing the delineation activities, BorgWarner compiled and submitted the analytical results on October 2, 2000 to MDEQ and US EPA, Region IV. Subsequently, BorgWarner began to schedule the remediation of residential and commercial properties adjacent to the KEC plant and along Jackson and Lee Avenues for which access was granted with the assistance of MDEQ and City of Crystal Springs Mayor Webb and where an attorney and/or an independent consultant were not involved in performing conflicting sampling activities.

2. Remediation of Residential Properties

On October 16, 2000 BorgWarner initiated remediation activities at the Medical Center and the Dabney/Smith properties, which are adjacent to the KEC plant. Remediation of the Newman Duplex, on Lee Avenue, began on November 30, 2000. Remediation of these properties involved excavation and disposal of all soil containing 1.0 part per million (ppm) or greater of PCBs in accordance with MDEQ's established clean-up criteria for residential properties. All soils containing greater than 1 ppm PCBs but less than 50 ppm PCBs were profiled and disposed of at the BFI's "Little Dixie" Subtitle D Landfill in Madison County, Mississippi after MDEQ and US EPA, Region IV approvals were obtained.

Following excavation, all excavated areas were sampled to confirm that impacted soil had been removed. In correspondence regarding disposal requirements, Craig Brown of US EPA, Region IV, stated that the excavated soils did not meet the definition of "PCB remediation waste." Under this definition, the remediation activities fell under the management criteria and guidelines set by MDEQ. As a result, the remediation and confirmation of clean-up standards established by MDEQ guidance were adopted and implemented in all of BorgWarner's residential remediation activities. A grid with ten-foot (10) sampling point centers was used to confirm that impacted soils had been removed at each site.

The remediation of the Dabney/Smith, the Medical Center and the Newman duplex property resulted in the removal of 1400 tons of soil, which was disposed of at the BFI "Little Dixie" Subtitle D Landfill and replaced with 1500 tons of certified clean soil. During the remediation activities, the on-site laboratory analyzed 324 soil samples in the month of November and the fixed-base laboratory analyzed 32 quality control samples.

Vegetation, such as live oak trees, was treated with specialty equipment for maximum protection and to minimize damage to the root systems. Soil surrounding the live oak tree roots was removed using an "Air Shovel"™, a unique technology adopted specifically for this purpose. The Air Shovel™ uses a pressure spray to dislodge soil from around the roots while a vacuum system removes the soil and water by vacuuming into a tank. This method of soil removal has performed effectively with minimal damage to the tree's root system as was confirmed by the landscaping contractor and arborist. However, this process, regardless of its effectiveness, is very tedious and as a result only the tree on the Dabney/Smith property was completed during the second half of November. One other live oak tree, located on the Medical Center property, remains to be treated in a similar fashion and is scheduled for January 2001.

Landscaping and replacement of structures (sheds, car ports, etc.) on both the Medical Center and the Dabney/Smith properties are continuing and will most likely be completed by the end of December 2000. Both properties have been surveyed and the fence between the Dabney/Smith and Medical Center properties is currently being re-installed. Landscaping has been completed on the Newman duplex property.

Third party independent sampling activities commissioned by the Nutt & Associates Law Firm have interfered with planned remediation activities along Lee Avenue, specifically at the Frazier's, Edward's, and Kellum's properties. The Garment Shop is a more complicated matter for two reasons. First, the impacted soil at the Garment Shop is located at the property line between it and the Kellum residence and second, the Kellum elm tree roots extend to the Garment Shop property itself. BorgWarner has filed a Freedom of Information Act request to MDEQ in an effort to obtain a copy of the recently submitted report generated by these independent parties.

BorgWarner, after its evaluation of the sampling results and data contained within the third party report, will begin discussions with the attorney(s) representing each resident (mentioned above) along Lee Avenue in an attempt to resolve the matter, including confirmation that all sampling results have been disclosed, and whether further sampling is necessary, and confirm access to then remediate those properties. BorgWarner also plans to keep MDEQ apprised of any developments and any progress or if no progress is being made with the attorney(s) involved.

BorgWarner will schedule delineation activities for the Gas Station, which is at the corner of Lee Avenue next to the Garment Shop, Mayor Webb's residence and the drainage pathway to the south. BorgWarner will inform MDEQ of the timing for those activities.

3. Drainage Channel Properties

Beginning on October 30th through the end of November, BorgWarner collected and analyzed soil samples from nine properties situated along the drainage channel leading from the north side of KEC's plant site to Lake Chautauqua. The properties were:

1. Sojourner Property, 111 M^cPherson Street
2. Weathersby Property, 101 Forest Street
3. Robert Williams Property (Lonnie Williams' residence), 103 Forest Street
4. Flossie M^cMurray Property (Ralph Williams residence), 104 Forest Street
5. Ralph Williams Rental Property, 107 Forest Street
6. Richard Williams Property, 102 Forest Street
7. Roberta Fitzgerald Estate Property, (R.P Edwards point of contact) 108 Tucker Street
Property currently is being rented to the Kendrick family.
8. Welch Property, 501 Camp Street
9. Orister Harris Property, 311 West Railroad Avenue

A total of 650 soil samples was collected from these properties and analyzed by the on-site laboratory. The fixed-base laboratory analyzed an additional 65 samples for confirmation and quality control purposes. These preliminary assessment activities were conducted in the same manner as the Kuhlman plant preliminary site assessment and the KEC plant adjacent residential properties; and utilizing the "EPA, Region IV Environmental Investigations Standard Operating

Procedures and Quality Assurance Manual", May 1996 (EISOPQAM), sampling and analytical protocols.

Preliminary results available at this time indicate that six of the nine properties that were sampled will require certain remediation. Four properties, including the Sojourner, Williams' rental, Harris and Welch properties, will require remediation under the MDEQ guidelines since the highest concentrations detected are less than 50 ppm. Two properties, including the M^cMurray and R. P. Edwards properties, have soil with PCB concentrations greater than 50 ppm and therefore will require remediation under the TSCA rules. The following is a list of properties where concentrations greater than 1.0 ppm PCB were detected as well as the highest detected concentration on each property:

<u>Property</u>	<u>Highest Detected Concentration</u>
Sojourner	2.6 ppm
Williams rental	30.0 ppm
Harris	1.2 ppm
Welch	8.4 ppm
M ^c Murray	70.0 ppm
R. P. Edwards	51.0 ppm

Data from this sampling event are being evaluated and once quality control measures are completed the data will be tabulated. Site-specific reports containing collected data, maps of sampling locations, and work plans for remediation, if required, for each individual site are also being prepared and will be submitted to MDEQ and US EPA, Region IV by January 12, 2001.

It is anticipated that additional sampling will be required along the drainage channel. Several undeveloped properties, either abutting the drainage channel or through which the drainage channel runs, will be sampled to delineate the extent of possibly impacted soil and determine the potential for future runoff to Lake Chautauqua. The Department will be kept apprised as to the timing for this additional investigation and sampling activity.

4. KEC Plant

After an initial phase of sampling in the areas identified by KEC's construction activities and the related equipment decontamination zone, BorgWarner conducted further, substantial sampling activities in the south and north parking lot areas as well as the former above ground storage tank area. These delineation activities, other than any possible data gaps, have been completed. The results are currently being tabulated and compared for correlation purposes between the on-site and off-site laboratories, prior to being issued to MDEQ. Should any data gaps exist, BorgWarner will conduct further sampling activities.

December 20, 2000

Page 6 of 7

This additional data will be incorporated as an addendum to the *Preliminary Site Assessment Report*, submitted to MDEQ in July 2000. Comments to the *Preliminary Site Assessment Report* made by MDEQ will also be addressed and included in the addendum submittal. It is anticipated that the addendum report will be submitted to MDEQ by February 12, 2001.

5. Lake Chautauqua

BorgWarner intends to consider delineation of the sediments at Lake Chautauqua, ecological assessment, and surface water sampling, to the extent appropriate after receipt of the pending "Task Force" report. These activities will not begin on any great scale until the Task Force report is evaluated.

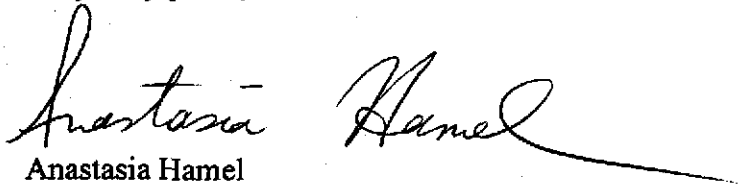
6. Groundwater Delineation

BorgWarner intends to delineate the nature and extent of any groundwater contamination relative to the KEC plant. Groundwater delineation will take place at the time that remediation at the KEC plant commences. It is critical that the protective cover at the KEC plant site is not disturbed for the time being and that the groundwater investigation is addressed when BorgWarner is actively remediating on the KEC plant property. This approach will ensure that sediments from the KEC Plant do not travel to the drainage channel and Lake Chautauqua.

BorgWarner remains dedicated to continuing its open communication with MDEQ and US EPA, Region IV and looks forward to the meeting with MDEQ and City of Crystal Springs Mayor Webb and other Crystal Springs representatives on January 17, 2001 (at 8:30 a.m.) to further discuss any of the above and share its plans for future activities.

Should you have any questions or comments, please contact me directly at (810) 497-4503 at your earliest convenience.

Very truly yours,



Anastasia Hamel
Director, Environmental Programs
BorgWarner Inc.

Attachments:

1. Work Plan – Preliminary Assessment and Remediation
2. Craig Brown, US EPA, Region IV letter to BFI

cc: J. Banks, MDEQ
T. Russell, MDEQ
K. Dowell, Esq., MDEQ
C. Brown, US EPA Region IV
H. Webb, Mayor Crystal Springs
Laurene H. Horiszny, Esq.
Robert Martin, MSGA
Thomas D. Lupo, Esq.
Scott E. Schang, Esq.
Mickey Crockett, KEC
Al Thomas, KEC

**WORKPLAN FOR THE PRELIMINARY
ASSESSMENT AND REMEDIATION OF PCB CONTAMINATION IN SOIL
KUHLMAN ELECTRIC CORPORATION FACILITY
AND RESIDENTIAL COMMERCIAL PROPERTIES
IN CRYSTAL SPRINGS, MISSISSIPPI**

As established by the Mississippi Department of Environmental Quality (MDEQ) guidelines in connection with this project, all work related to the preliminary assessment of the extent of contamination at the Kuhlman Electric Corporation (KEC) facility and work related to the preliminary assessment and confirmation of remedial actions at KEC adjacent residential/commercial properties and residential properties along the drainage channel (leading from the north side of KEC's facility to Lake Chautauqua) has been performed in accordance with the *Environmental Protection Agency (EPA), Region IV "Environmental Investigations, Standard Operating Procedures and Quality Assurance Manual", May 1996 (EISOPQAM)*.

Copies of relevant and applicable portions of the EISOPQAM are maintained on site during all field activities and all field personnel are trained in its implementation. Remedial action confirmation sampling grids were established using *MDEQ Guidance Document, Verification of Soil Remediation, Environmental Response Division, Waste Management Division, April 1994, Revision 1*. Specifically, sampling grids were based on Part 2-Medium and Large Site Soil Cleanup Verification, "Establishing Grid Interval."

Field operations were performed under the site-specific Health and Safety Plan guidelines. Modified Level "D" Personal Protective Equipment (PPE) was utilized by all personnel working within the investigative area.

Sampling Objectives

The soil-sampling objective is to establish the vertical and horizontal extent of contamination resulting from historical facility operations. In the KEC facility case, the soil-sampling objective included historical use of polychlorinated biphenyl (PCB). All sampling procedures were conducted in accordance with the US EPA, Region IV EISOPQAM. Sampling procedures included the collection of soil samples on a twenty foot triangular grid, where possible, at discrete depth intervals. Surface and subsurface soil samples were collected using GeoProbe® MacroProbe™ direct push sampling equipment. The GeoProbe® system uses a hydraulically driven hammer to advance a hollow, split-barrel sampler to the desired depth. The sampler contains an acetate liner in which a sample of the cored soil is retained. The MacroProbe™ corer retains a 1.25-inch diameter continuous 4 feet in length core sample. Once sampling is completed, the direct-push boring holes are backfilled with bentonite chips in unpaved areas, and with grout in parking lots and other paved areas.

Throughout the delineation activities each direct-push boring was sampled at 0.5-3.0 feet below ground surface (bgs) and at 3.0-6.0 feet bgs. Selected borings were completed to depths varying from 8-12 feet bgs and sampled in these deeper intervals to evaluate the vertical distribution of contaminants.

Additional sampling of dust, stream and drainage ditch sediments, surface water and ground water were collected, as warranted, in accordance with applicable EISOPQAM guidelines.

Analytical Methods

Samples that were collected were analyzed for PCBs by the on-site mobile laboratory, Environmental Chemistry Consulting Services (ECCS) of Madison, Wisconsin. Initially soil samples were also analyzed for chlorinated benzenes until data confirmed that chlorinated benzene contamination is not at issue in samples with low concentrations of PCBs (generally <20 ppm). At least 10% of all samples were split and sent to a fixed-base laboratory, Paradigm Analytical Laboratories, Inc. (PAL) of Wilmington, North Carolina for analysis of the same parameters as for the on-site mobile laboratory to corroborate the results of laboratory analyses for quality control and quality assurance measures. Both the on-site and fixed-base laboratories used the same standard EPA approved analytical methods. PCBs were analyzed by Modified Environmental Protection Agency (EPA) Method 8080/81 and chlorinated benzene compounds were analyzed by EPA Method 8270. Volatile organic compounds (VOCs) were analyzed by EPA Method 8260 for samples suspected of being impacted by other industrial processes solvents unrelated to PCBs. Select soil samples were also analyzed for silver, by EPA Method 6010B, and cyanide, by EPA Method 9012A.

Surface water samples were analyzed by PAL for PCBs using EPA Method 8080/81. Semivolatile organic compounds (SVOCs) were analyzed by EPA Method 8270, Volatile Organic Compounds (VOCs) were analyzed by EPA Method 8260, silver by EPA Method 6010B, and cyanide using Standard Method 4500 Cn-E. Perched ground water was analyzed for PCBs, SVOCs, and VOCs by the same methods as indicated above for surface water.

Quality Control

The following is the list of key personnel dedicated to this project:

Project Manager:

Mr. Robert Martin, Martin & Slagle GeoEnvironmental Associates, LLC

Duties:

Responsible for management of project **including** all field coordination efforts.

Field Sample Custodian:

Mr. Robert Martin, Christine Slagle, Martin & Slagle GeoEnvironmental Associates, LLC

Duties:

Maintaining custody of samples, completing sample labels, Chain-of-Custody record.

Field Team Leader:

Mr. Robert Martin, Martin & Slagle GeoEnvironmental Associates, LLC

Duties:

Responsible for all activities related to the collection of samples.

Samplers:

Tim Fitzpatrick, Christine Slagle, Robert Martin

Duties:

Individuals responsible for the actual collection of samples.

Laboratory Sample

Custodian:

Mr. Michael Linskens, ECCS

Mr. Nicolas Schertz, ECCS

Ms. Erin Staagard, PAL

Duties:

Individuals responsible for accepting custody of samples from the field sample custodian.

Quality Assurance Objectives for Data

Data for this project is being generated by two separate entities. The on-site data is generated by ECCS in their mobile laboratory. The fixed-base laboratory, PAL in Wilmington, North Carolina, generates the analytical results for the split samples.

The data quality objectives are pre-defined for the ECCS data in that Mississippi considers all mobile lab data screening level data. ECCS uses the same equipment and methodology as the fixed-base laboratories with the exception of the mini-extraction modification. Mobile laboratory data is validated by comparison of a minimum of 10% split samples with PAL. Following this procedure, the data qualifies as screening data with definitive confirmation under US EPA, Region IV EISOPQAM guidelines.

All samples sent to PAL were collected as follows: The sample was transferred from the GeoProbe® clean, unused, acetate sample liner into the labeled 4 ounce (oz) amber glass soil jar. The sample jar was then transferred to the mobile lab where ECCS personnel homogenized the sample prior to taking an aliquot for analysis. Due to the limited sample volume required by the ECCS mini-extraction and the low volatility of the chemicals of concern, the initial sampling jar was resealed (after ECCS personnel removed the amount of sample needed for their analysis), refrigerated and then sent to PAL; meaning PAL analyzed the sample from the exact same sample jar as ECCS.

Equipment rinsate samples were collected for evaluation of cross-contamination potential from ineffective decontamination procedures. These were prepared by pouring distilled water over the sampling equipment after decontamination and collecting and preserving the rinsate that was generated. Equipment rinseate samples were collected in accordance with the EPA, Region IV EISOPQAM guidelines.

Field blank samples were collected by filling sampling containers that were kept in the transition zone with distilled water. Field blanks determine the presence of ambient contaminants that may not be directly related to concentrations of contaminants in the sample media.

Blind duplicate soil samples were collected for analysis and sent to both laboratories. Blind duplicates were collected by homogenizing an aliquot of sample in a disposable plastic container and splitting the homogenized sample into two containers. After ECCS took their aliquot of these samples, the remainder of the sample was sent to PAL for analysis.

SAMPLE CONTROL AND FIELD RECORDS

Sample Identification

All samples sent to PAL for analysis conform to the labeling requirements under section 3.2.1 of the EISOPQAM.

8.3.1 Chain of Custody Procedures

Samples were logged as they were collected from the geoprobe liners. Date, time and sample lithology were recorded on each log. Samples were then transferred to 4 oz amber glass jars and the jars transferred to a small sample cooler, which was taken to the mobile lab by field personnel in charge of sample handling. Sample identification (ID), date and time sampling occurred were recorded in the field logbook before transferring the samples to the mobile lab. Upon arrival at the mobile lab, the samples were transferred to the ECCS sample custodian who logged each sample on ECCS chain of custody forms. Each sample was assigned a unique ECCS internal ID number for tracking purposes. After analysis, the samples were transferred to either a sample refrigerator in the mobile lab or stored in coolers with ice until they were either shipped to PAL for confirmation analysis or readied for disposal. For samples sent to PAL, a new chain of custody form was completed by field personnel in charge of sample handling.

8.3.2 Field Records

Field records were kept in accordance with procedures and guidelines specified in section 3.5 of EISOPQAM.

8.4 Analytical Procedures

For analysis of samples in the field, ECCS used EPA Method 8082m, modified for quantitation of chlorinated benzenes and the mini extraction procedure.

PAL used EPA Method 8082 for quantitation of PCBs. For chlorinated benzenes, it used EPA Method 8270. While Method 8270 does not cover all the chlorinated benzenes, it provides confirmation of the ones it does detect and has the added benefit of supplying an analysis of a broad range of other semivolatile organic compounds.

For the analysis of cyanide EPA Method 9012A was employed and for silver EPA Method 6010B.

Selected samples were analyzed by EPA Method 8260, primarily to confirm that volatile organic compounds were not present in the samples or part of the site contaminants.

8.5 Laboratory Quality Assurance/Quality Control (QA/QC)

QA/QC procedures for both labs were found to be virtually identical. Summaries of each laboratory procedures follow.

ECCS:

- ◆ Continuous calibration standards analyzed every ten samples or less and at the end of a run.
- ◆ Blank samples and laboratory control samples (LCS) analyzed every twenty samples or less with a minimum of one per day.
- ◆ Matrix Spike/Matrix Spike Duplicate (MS/MSD) samples analyzed every twenty samples or less with a minimum of one per day.

PAL:

- ◆ Continuous calibration standards analyzed at least once every 12 hour shift plus a minimum of every 20 samples gas chromatography/mass spectroscopy (GC/MS) criteria follows method specific tuning requirements per EPA Method 8270.
- ◆ Blank and LCS samples analyzed every 20 samples or less with a minimum of one per day.
- ◆ MS/MSD samples analyzed every 20 samples or less with a minimum of one per day.

8.6 Data Validation and Reporting

As discussed in section 8.2, the primary validation of the ECCS data was accomplished through comparison with the data from PAL.

Since Hexachlorobenzene and 1,2,4-Trichlorobenzene are the only chlorinated benzenes on the standard Method 8270 list, these two compounds and total PCBs were the parameters tracked for the data validation procedure.

Overall, the correlation to this point of the investigation and remediation activities has been excellent with the majority of sample splits showing Relative Percent Differences (RPDs) of less than 100. Considering the inherent variability of soil as a matrix, achieving 93% acceptable split data spanning several orders of magnitude of concentration serves to justify the use of the on-site data as definitive quality.

Tel: (601) 892-4661

Fax: (601) 892-6406



KUHLMAN ELECTRIC
CORPORATION

Instrument Transformers

Power Transformers

101 Kuhlman Drive, Crystal Springs, Mississippi 39059

October 16, 2000

Ms. Kathy Daniel
Browning-Ferris Industries of MS, Inc.
P. O. Box 4736
Greenville, MS 38704-4736

**RE: Kuhlman Electric
Waste Profiles for PCB Contaminated Soil**

Dear Ms. Daniel:

Per your request, this letter details the source of the soil and the respective tonnage of waste associated with each site.

The contaminated soil that is destined for disposal is the result of remediation activities at various residences and commercial properties surrounding the Kuhlman Electric Corporation facility in Crystal Springs, Mississippi. The source of the PCB contamination is believed to be transformer oil used in the production of electrical transformers at the facility from the mid 1950s to 1973. As shown in the laboratory reports, there are no other contaminants associated with the soil.


The locations are as follows:

Medical Clinic - Lee Avenue	774 tons
Edwards Property - 406 Lee Avenue	446 tons
Garment Shop - 414 Lee Avenue	42 tons
Frazier Property - Lee Avenue	333 tons
Duplex - 408/410 Lee Avenue	63 tons
Kellum Property - 412 Lee Avenue	228 tons
Dabney/Smith Property - N. Jackson & Lee Avenue	298 tons

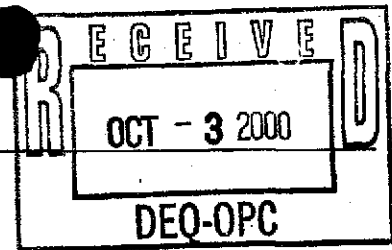
Excavation is currently scheduled to begin during the week of October 16, 2000.

If you have any question or comments, please do not hesitate to call Robert Martin at (828) 669 – 3929.

Sincerely,
Kuhlman Electric Corporation



Alan Thomas
Manager Maintenance / Facility Engineer



October 2, 2000

FILE COPY

Ms. Gretchen Zmitrovich
Office of Pollution Control
Mississippi Department of
Environmental Quality
P.O. Box 10385
Jackson, Mississippi 39289-0385

**SUBJECT: Transmittal of Analytical Data for Residences
Kuhlman Electric Corporation
Crystal Springs, Mississippi**

Dear Ms. Zmitrovich:

Attached are site plans and spreadsheets showing sampling locations and analytical results from sampling of soils by Ogden Environmental and Energy Services. The soil samples were collected from residential properties surrounding Kuhlman Electric Corporation. Samples were collected from various depths ranging from ground surface to 4 feet below grade and analyzed by an on-site laboratory. Split samples were sent to Paradigm Analytical Laboratories for confirmation of on-site lab results.

The following properties have concentrations of PCB 1260 in excess of 1 mg/kg.

1. Medical Clinic on Lee Avenue
2. Edwards Property at 406 Lee Avenue
3. Garment Shop at 414 Lee Avenue
4. Frazier Property on Lee Avenue
5. Duplex Property at 408/410 Lee Avenue
6. Kellum Property at 412 Lee Avenue
7. Dabney/Smith Property on N. Jackson and Lee Avenue

8. Cooper Property on N. Jackson and Fulgham Avenue
9. Larry and Carol Wright on N. Jackson Avenue

Please contact me at 828-669-3929 if you have any questions or comments concerning these results.

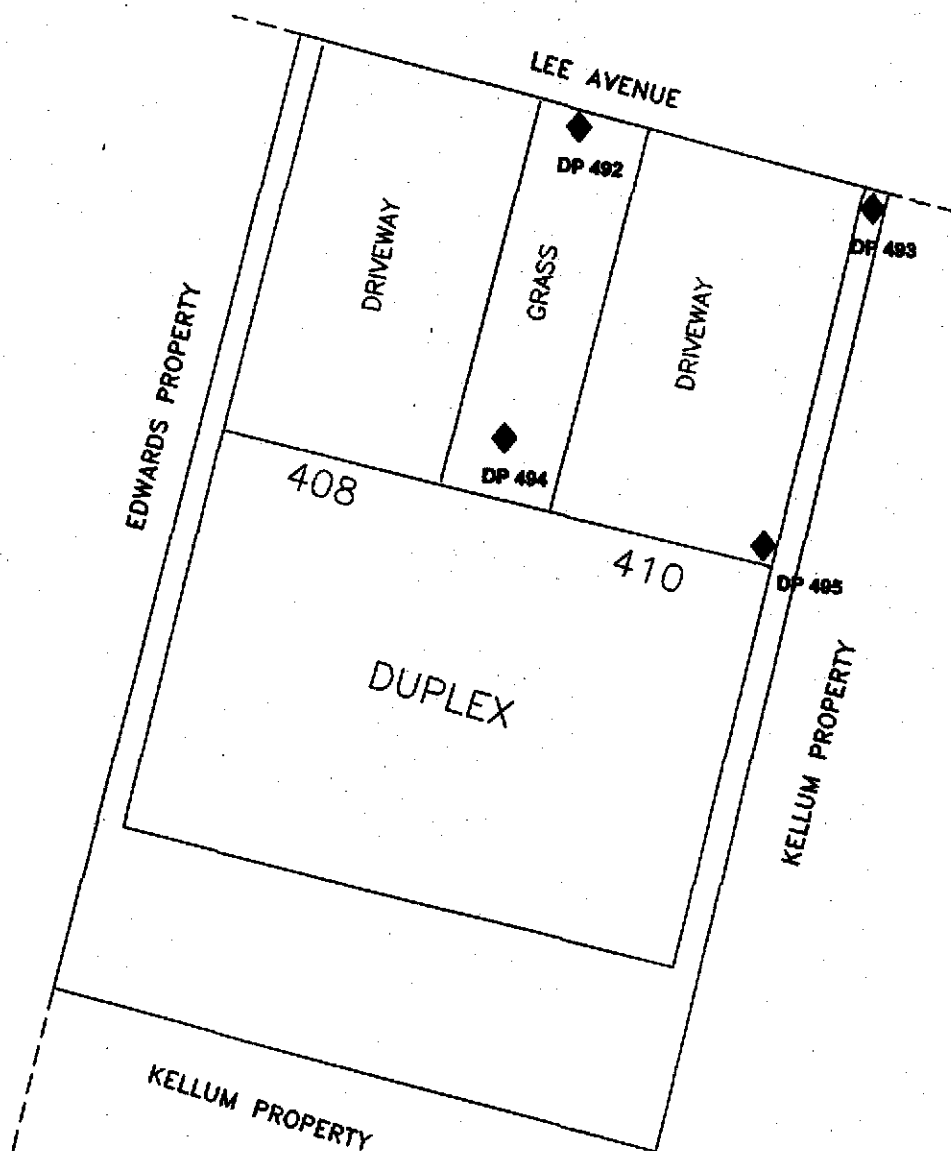
Sincerely,

Martin and Slagle GeoEnvironmental Associates, LLC



Robert L. Martin, P.G.
Project Manager

Cc: Anastasia Hamel, BorgWarner Inc.



LEGEND

- ◆ SAMPLE POINT
DP 492 SAMPLE POINT NUMBER



- 1) ALL DISTANCES ARE ESTIMATED
- 2) THIS MAP PREPARED FROM RECORD MAPS
- 3) THIS MAP HAS BEEN PREPARED FOR PRESENTATION PURPOSES ONLY

SAMPLE LOCATIONS FOR
NEWMAN DUPLEX
408/410 LEE AVENUE

SCALE: AS SHOWN

DR MDI CHK TF REV BPS

PREPARED BY:

OGDEN ENVIRONMENTAL AND ENGINEERING SERVICES

200 SOUTH OLD STATEVILLE ROAD • HUNTERSVILLE, NC 28078 • 704-875-3570

PROJ: 073350000 | DATE: 09/24/00 | SHEET 1 OF 1

Soil and Wipe Sample Results
Newman Duplex
408 / 410 Lee Avenue
Crystal Springs, Mississippi

SOIL SAMPLES (MG/KG)												
Target Analyte	Sample #	DP-492	DP-492	DP-493	DP-493	DP-494	DP-494	DP-494	DP-495	DP-495	DP-495	DP-529
	Depth	4	4	0.5 (0.1)	4	0.5 (0.1)	4	0.5 (0.1)	4	0.5 (0.1)	4	4
	Lab #	427	428	429	430	431	432	433	434	435	436	532
PCB as 1260		4.6	<0.10	0.84	<0.10	0.32	<0.10	0.47	<0.10	0.47	<0.10	NA
	Collection Date	8/24/00	8/24/00	8/24/00	8/24/00	8/24/00	8/24/00	8/24/00	8/24/00	8/24/00	8/24/00	8/25/00
	Collection Time	14:34	14:35	15:23	15:24	15:29	15:30	15:34	15:35	15:36	15:37	17:02
	Injection Date	8/24/00	8/24/00	8/25/00	8/25/00	8/25/00	8/25/00	8/25/00	8/25/00	8/25/00	8/25/00	NA

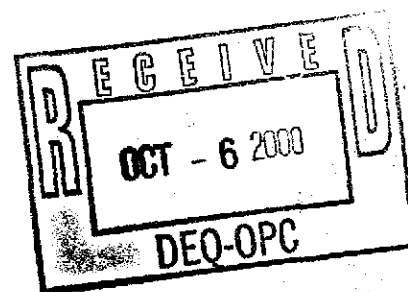
Notes:
NA Indicates Sample Not Analyzed

WIPE SAMPLES (TOTAL UG)					
Target Analyte	Sample #	DW-1	DW-2	DW-3	DW-4
	Depth				
	Lab #	755	756	757	758
PCB as 1260		<0.50	<0.50	<0.50	<0.50
	Collection Date	8/30/00	8/30/00	8/30/00	8/30/00
	Collection Time	15:08	15:10	15:11	15:13
	Injection Date	8/31/00	8/31/00	8/31/00	8/31/00

Notes:

LOCATION:
DW1: Western front door, 408 Lee Ave.
DW2: Eastern front door, 410 Lee Ave.
DW3: Wire mesh loveseat on front entrance porch.
DW4: Air conditioning unit, 410 Lee Ave.

October 5, 2000



Ms. Gretchen Zmitrovich
Office of Pollution Control
Mississippi Department of
Environmental Quality
Office of Pollution Control
P.O. Box 10385
Jackson, Mississippi 39289-0385

**SUBJECT: Transmittal of Revised Analytical Data Tables for Residences
Kuhlman Electric Corporation
Crystal Springs, Mississippi**

Dear Ms. Zmitrovich:

Attached is one complete set of revised spreadsheets showing analytical results from sampling of soils by Ogden Environmental and Energy Services. The tables were revised based on your review and comments. Results for split samples are being prepared into tables and will be forwarded to you by Monday at the latest.

Please contact me at 828-669-3929 if you have any questions or comments concerning these results.

Sincerely,

Martin and Slagle GeoEnvironmental Associates, LLC

A handwritten signature in cursive script that reads "Robert L. Martin".

Robert L. Martin, P.G.
Project Manager

Cc: Anastasia Hamel, BorgWarner Inc.

Soil and Wipe Sample Results
 Newman Duplex
 408 / 410 Lee Avenue
 Crystal Springs, Mississippi

SOIL SAMPLES (MG/KG)										
Target Analyte	Sample #	DP-492	DP-492	DP-493	DP-493	DP-494	DP-494	DP-494	DP-495	DP-495
	Depth (ft)	4	4	0.5	4	0.5	4	4	0.5	4
	Lab #	427	428	429	430	431	432	433	434	434
PCB as 1260		4.6	<0.10	0.84	<0.10	0.32	<0.10	<0.10	0.47	<0.10
	Collection Date	8/24/00	8/24/00	8/24/00	8/24/00	8/24/00	8/24/00	8/24/00	8/24/00	8/24/00
	Collection Time	14:34	14:35	15:23	15:24	15:29	15:30	15:30	15:34	15:35
	Injection Date	8/24/00	8/24/00	8/25/00	8/25/00	8/25/00	8/25/00	8/25/00	8/25/00	8/24/00

WIPE SAMPLES (TOTAL UG)					
Target Analyte	Sample #	DW-1	DW-2	DW-3	DW-4
	Depth	755	756	757	758
	Lab #				
PCB as 1260		<0.50	<0.50	<0.50	<0.50
	Collection Date	8/30/00	8/30/00	8/30/00	8/30/00
	Collection Time	15:08	15:10	15:11	15:13
	Injection Date	8/31/00	8/31/00	8/31/00	8/31/00

Notes:

LOCATION:
 DW1: Western front door, 408 Lee Ave.
 DW2: Eastern front door, 410 Lee Ave.
 DW3: Wire mesh loveseat on front entrance porch.
 DW4: Air conditioning unit, 410 Lee Ave.

FILE COPY

OGDEN

ENVIRONMENTAL AND ENGINEERING SERVICES

Mailing Address: PO Box 3142, Huntersville, NC 28070

200 South Old Statesville Road
Huntersville, NC 28078
(704) 875-3570
(704) 875-8718 Fax**FACSIMILE TRANSMITTAL****PLEASE DELIVER THE FOLLOWING PAGES TO:**

Name: Gretchen Zmitrovich
Firm: MDEA
CC: _____
Fax No. 601 961 5300

Total number of pages including this cover page: 5

If all pages are not received, please notify the sender immediately.

Sender: Tim Fitzpatrick Date: 9/5/00

Gretchen:

revised maps follow. Thanks,

Tim

() Originals to follow.

() This is the only copy you will receive.

CONFIDENTIALITY NOTE

The documents accompanying this facsimile contain information which is confidential, and may be legally privileged. The information is intended only for the individual or entity named on this cover letter. If you are not the intended recipient, be aware that any disclosure, copying, distribution or use of this information is prohibited. If you have received this facsimile in error, please notify us by telephone immediately so that we can arrange for the retrieval of the original documents at no cost to you.

OGDEN

Job Name:

Job Number:

Title: Debneg Yard - East

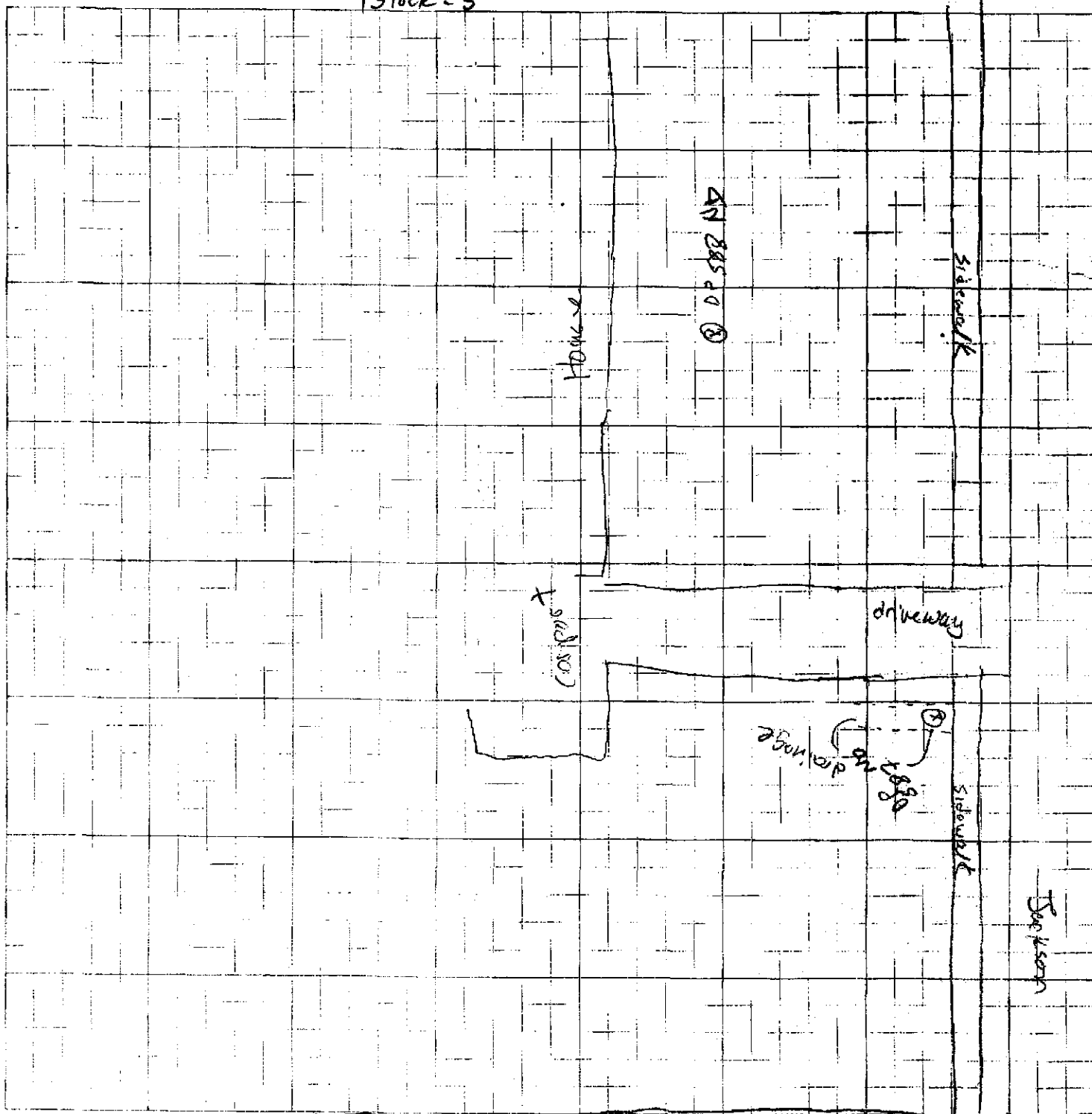
Computed by: TBF

Checked by:

Date: 8/29

Sheet: 19 Of: 20

Block = 5'

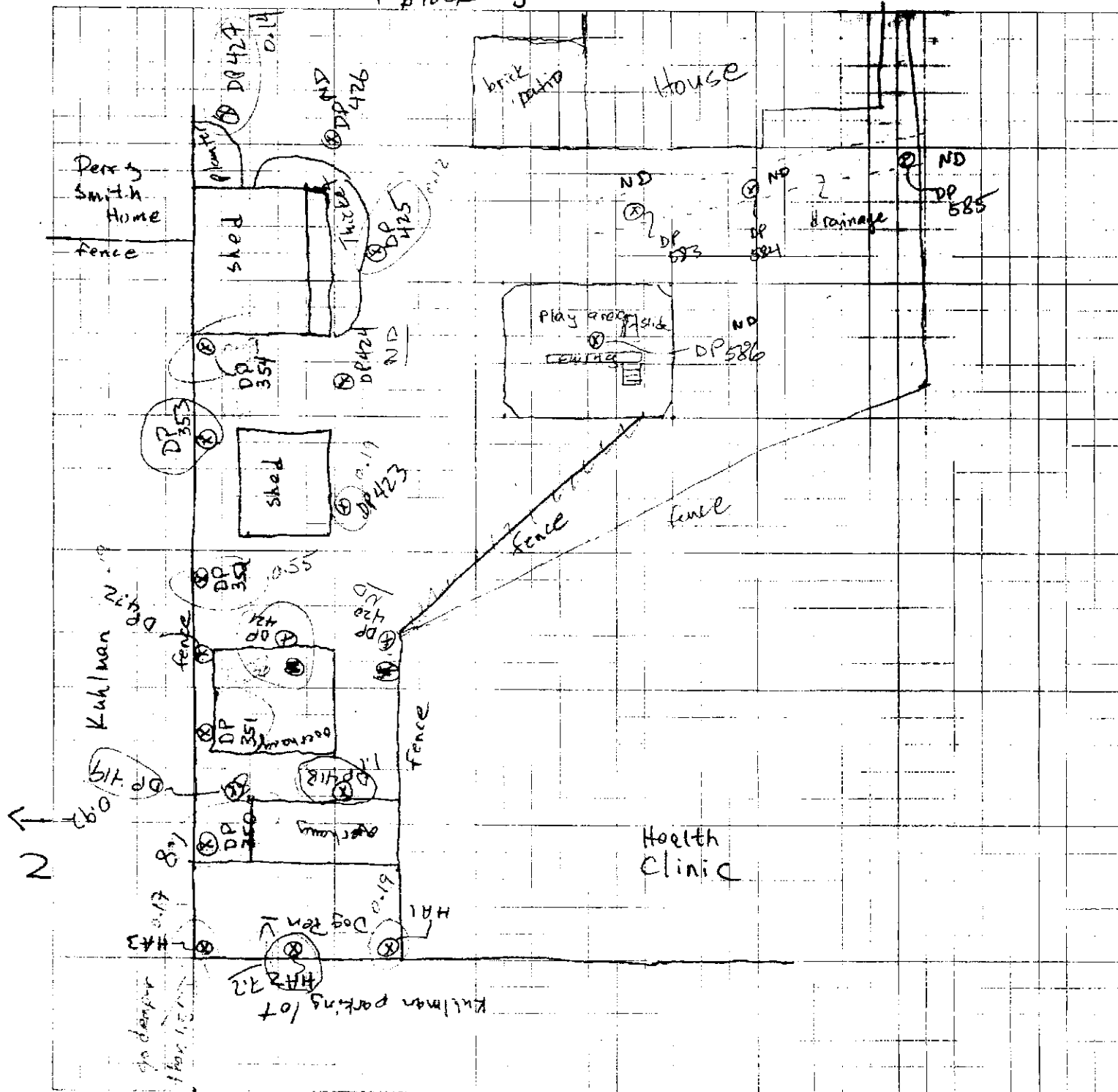


Leaf 1

OGDEN

Job Name: Crystal Springs
Job Number:
Title: Dabney Home
Computed by: TJE Checked by:
Date: 8-17-00 Sheet: 9 of 11

1 block = 5'



OGDEN
■■■■■

Job Name:

Job Number:

Title: 408/410 Lee St.

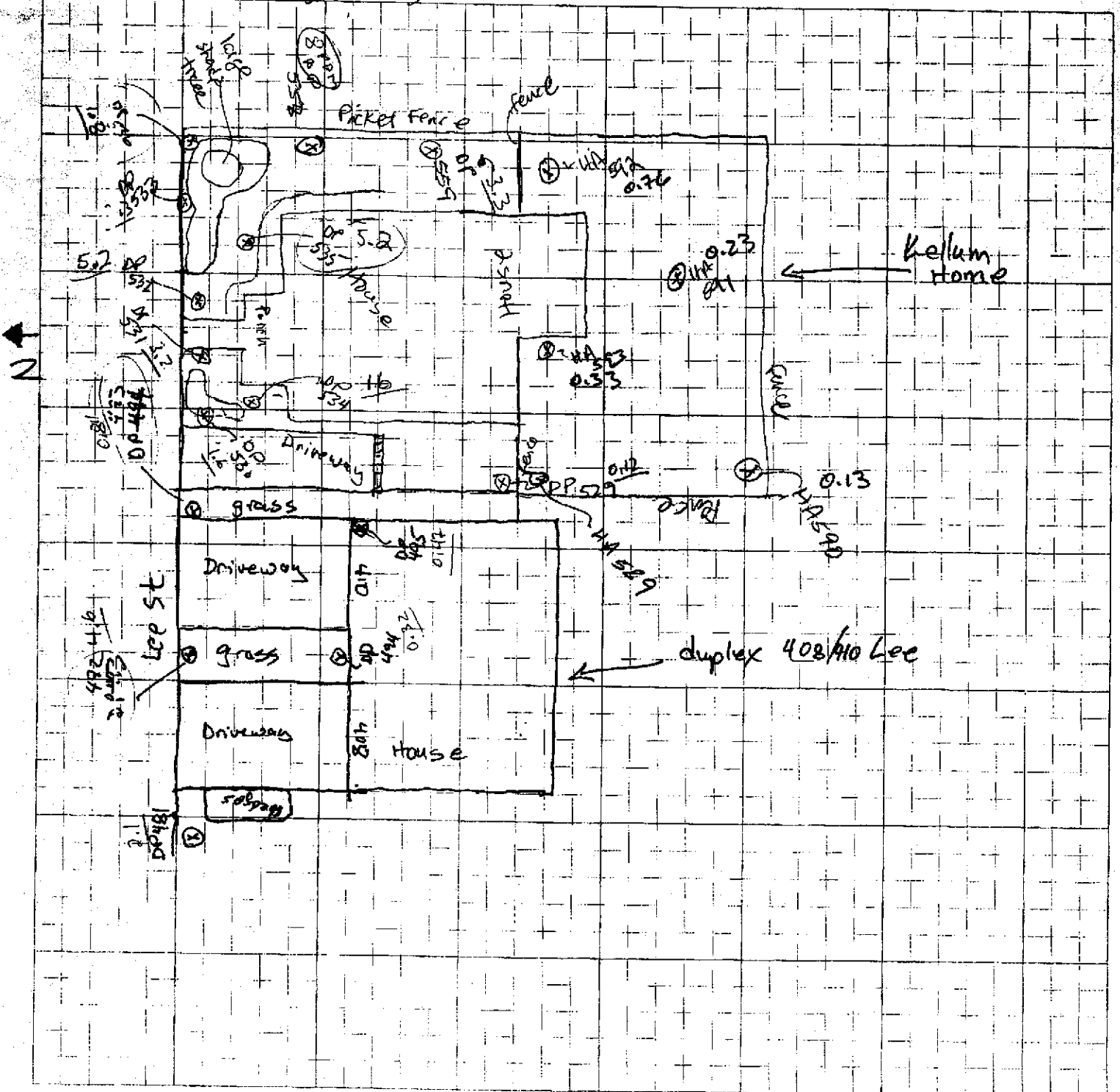
Computed by: TOF

Checked by:

Date: 8/24/00

Sheet: 15 Of:

1 block = 5'



408/410 West

BY: KUHLMAN ELECTRIC CORPORATION

601 8926496
601 8926496;

AUG-29-00 8:52AM;

PAGE 1

FILE COPY

19 pages w/cover

TO:

Gretchen Zmitrovich
MDEQ

From:

Tim Fitzpatrick
Ogden Environmental

Gretchen: Following are my field maps - I hope
you can read them! Data will follow shortly.

Please call after you receive this fax.

Thanks,

Tim

OGDEN

Job Name:

Crystal Springs

Job Number:

Title:

Sony Reeves

backyard 405 Jackson

Computed by:

Date: 2/16/2000

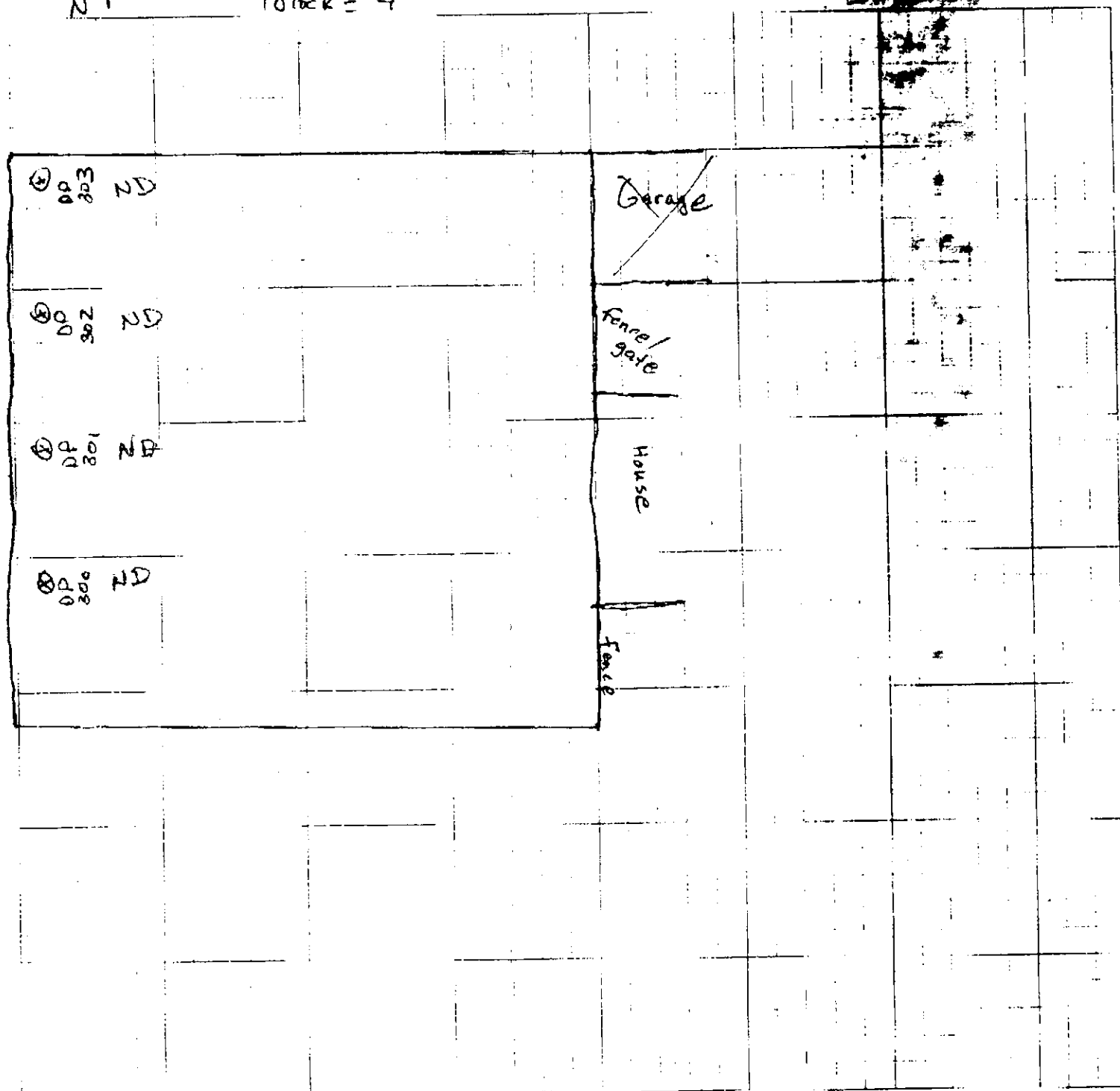
Checked by:

Sheet:

11

N ↑

1 block = 4'



OGDEN

DP 280
200
7

Job Name:

Crystal Springs

Job Number:

Title:

Stringer Funeral Home

Computed by:

Checked by:

Date:

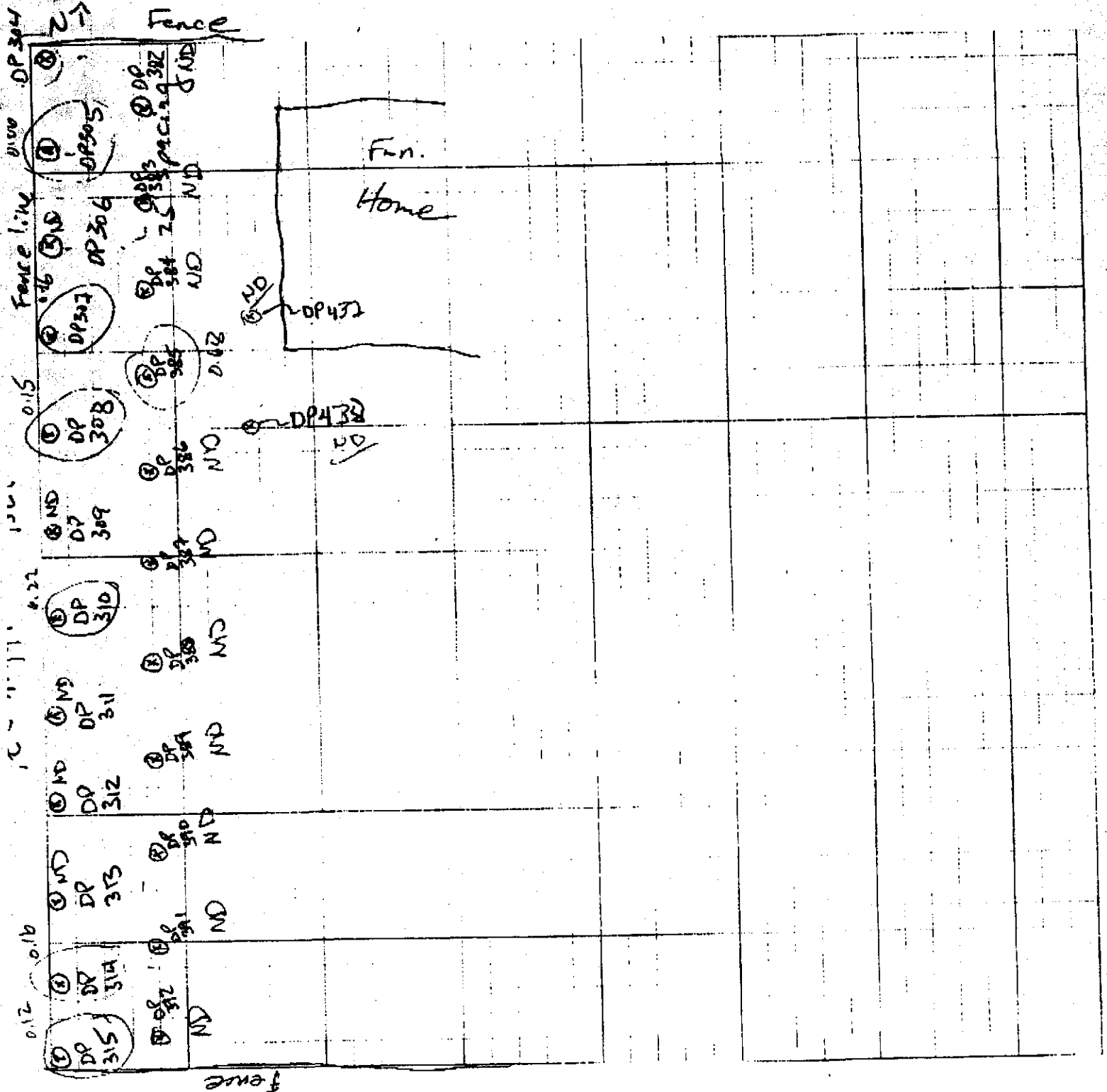
8-16-2000

Sheet:

2

Of:

11



OGDEN
■ ■ ■ ■ ■

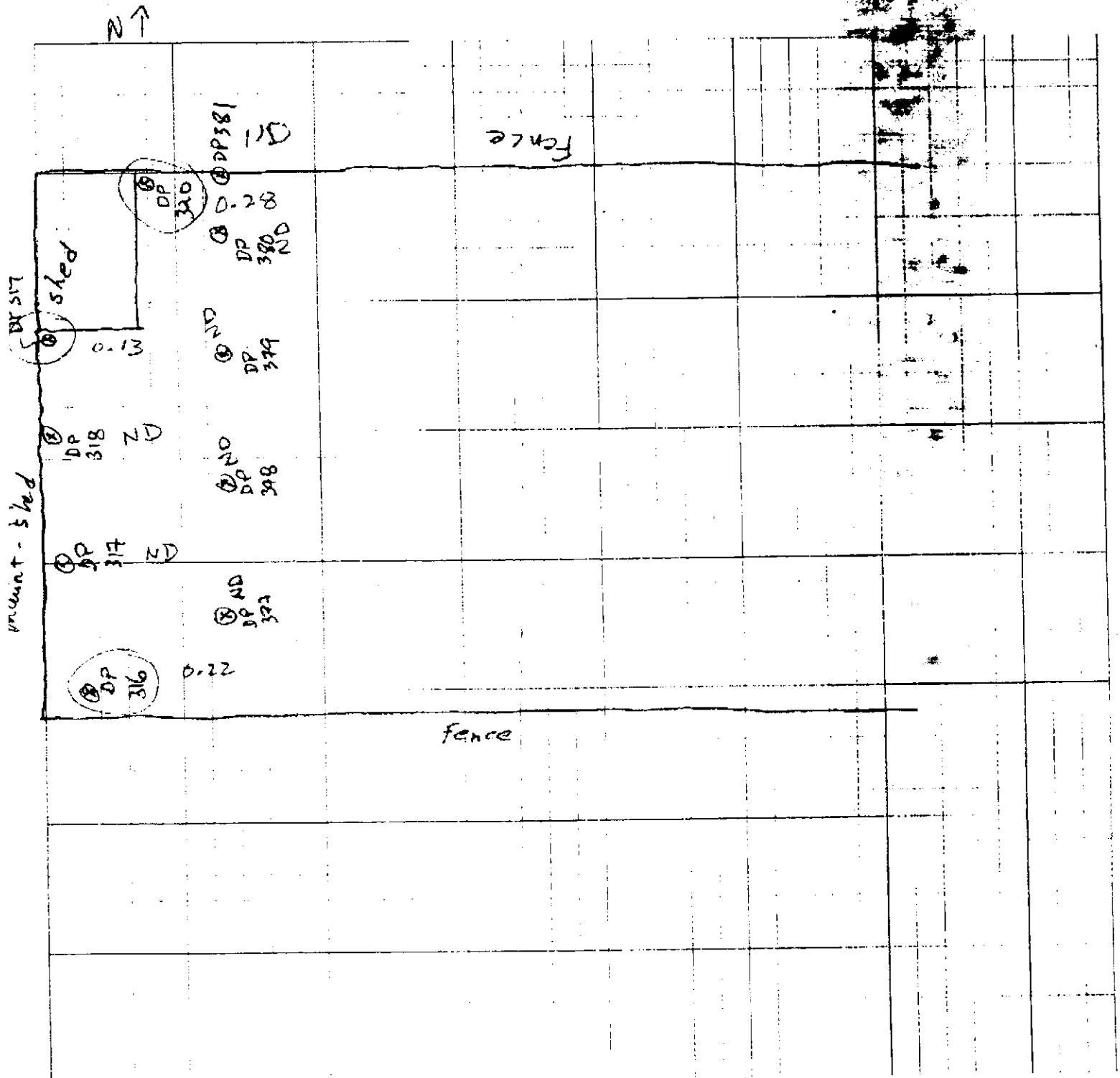
Crystal Spritz

Title: 401 N. Jackson Street right

Checker

Shots: 2-10-11

1 block = 4'



OGDEN
■■■■■

Job Name: Crystal Springs

Job Number:

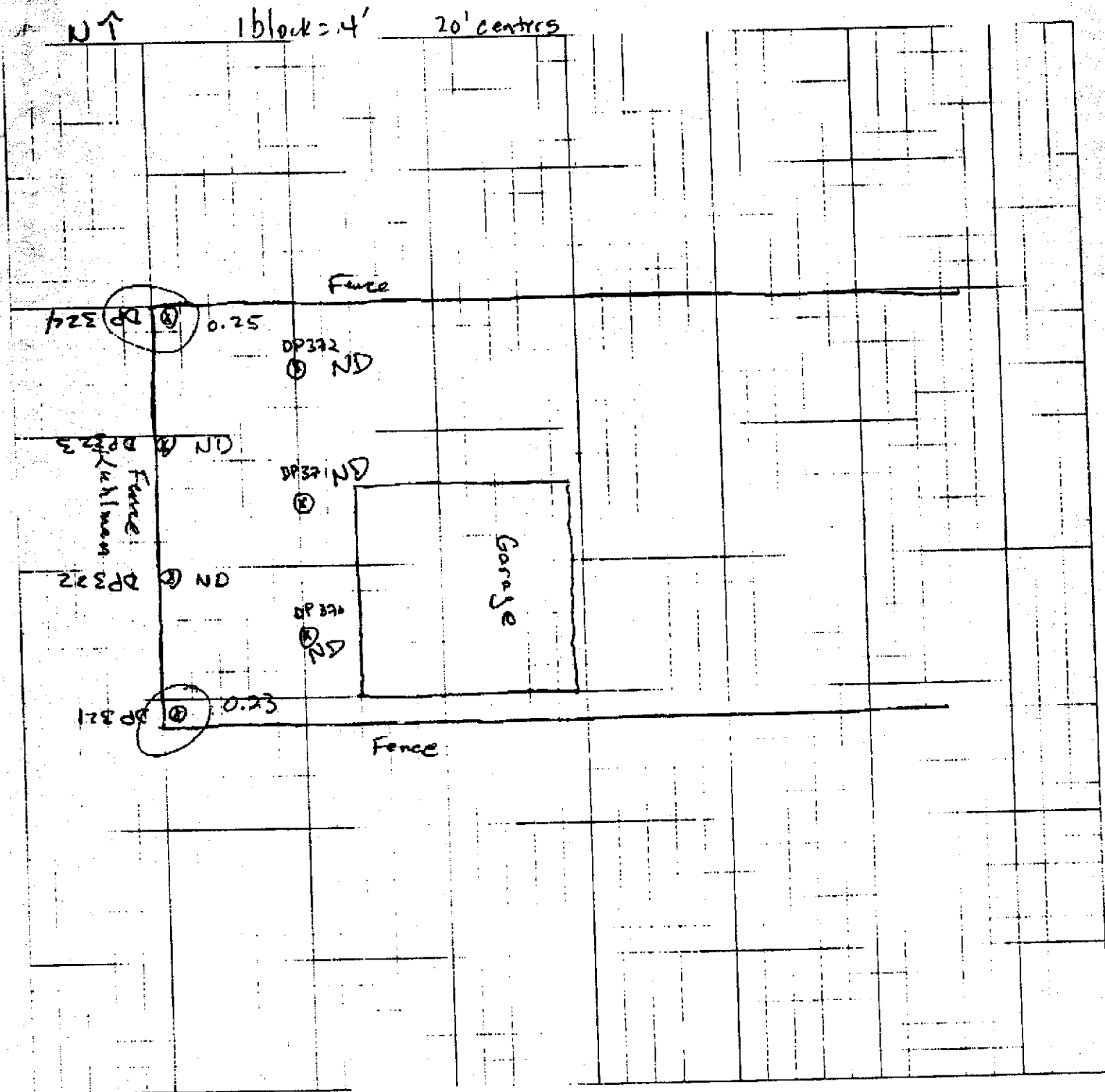
Title: 407 N. Jackson Louie Lang

Computed by:

Checked by:

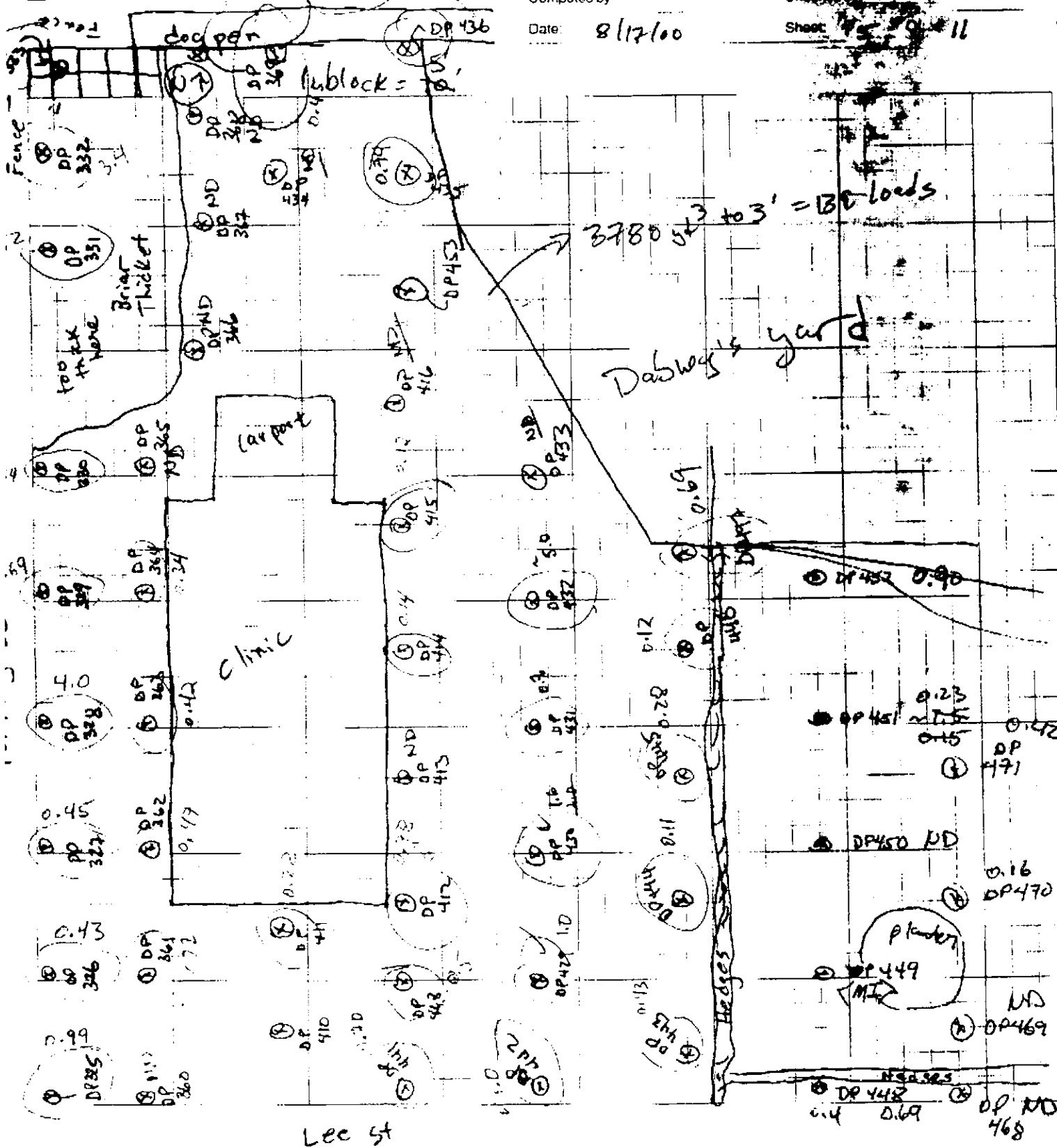
Date: 8-16-00

Sheet: 4 Of: 11



OGDEN

Job Name: Crystal Springs
 Job Number:
 Title: Lee St. Medical
 Computed by: Chockley
 Date: 8/17/00 Sheet 9 of 11



Lee St

OGDEN

Crystal Springs

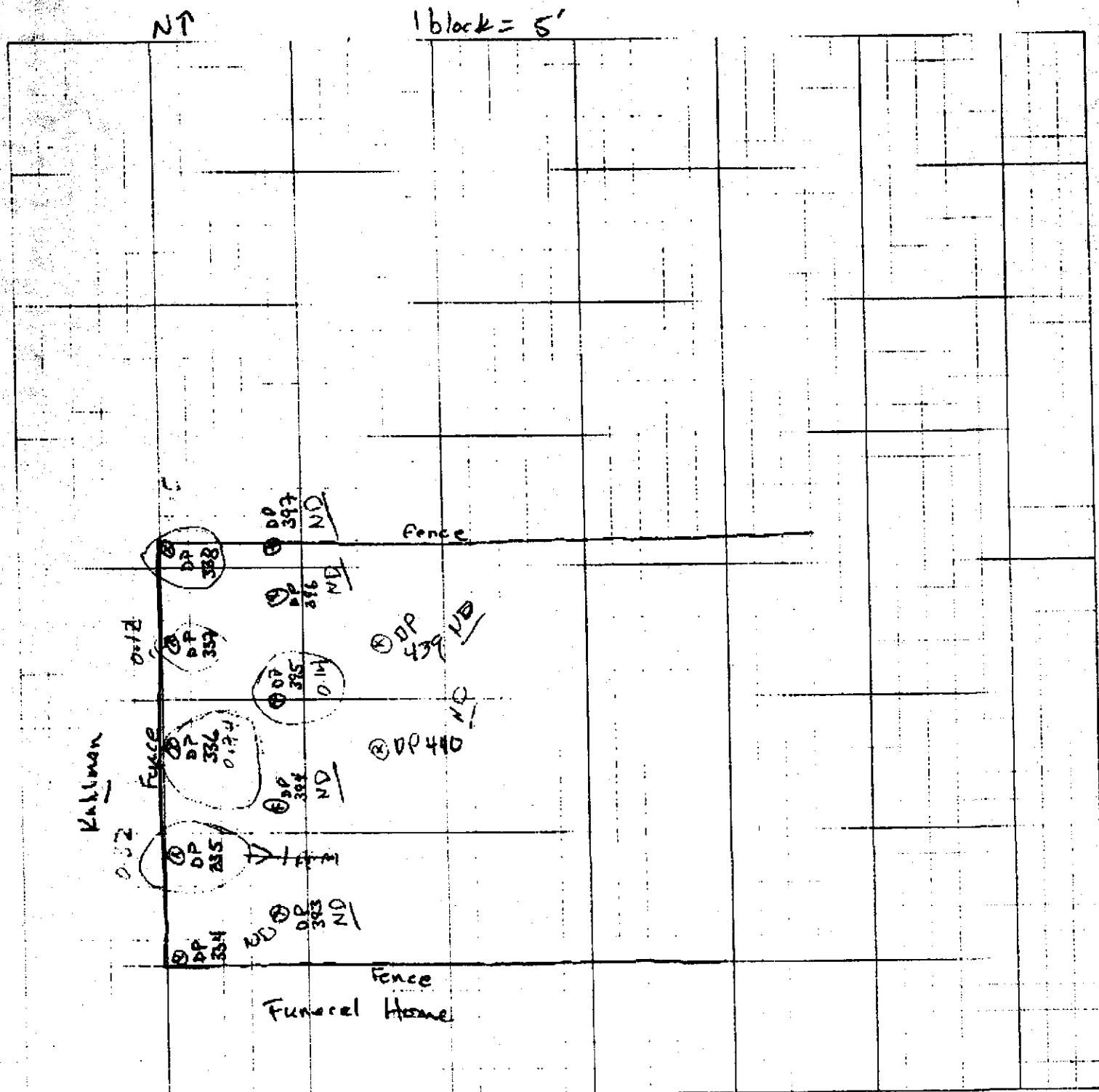
Tide:

303 N. Jackson (stringer)

Checked by:

Date: 8-17-00

Sheet: 6 Of: 11



OGDEN

Job Name

Crystal Springs

Job Number

Title

219 N-Jackson - Peter Smith

Computed by

TJF

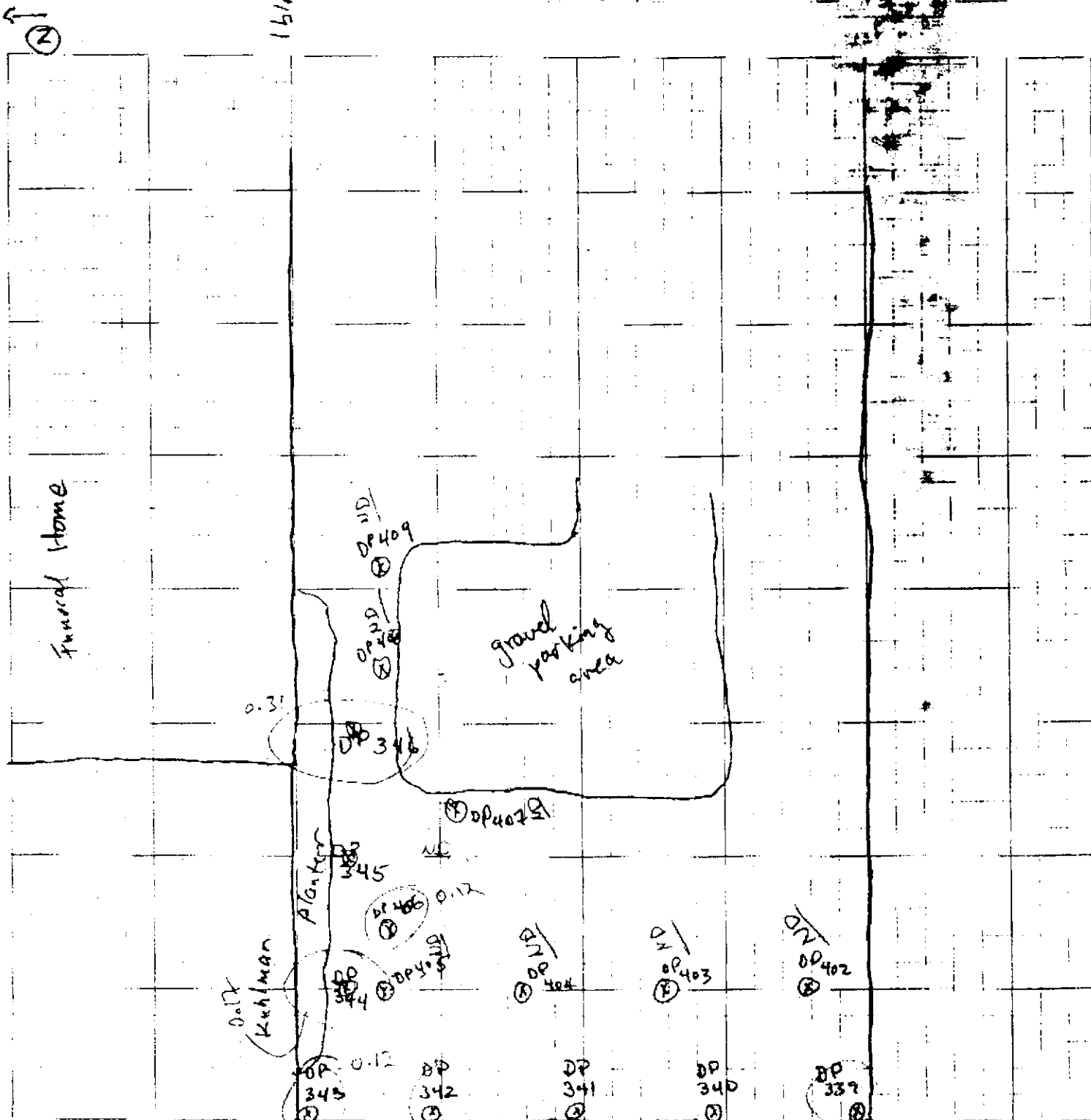
Date

8-17-00

Checked by

Sheet

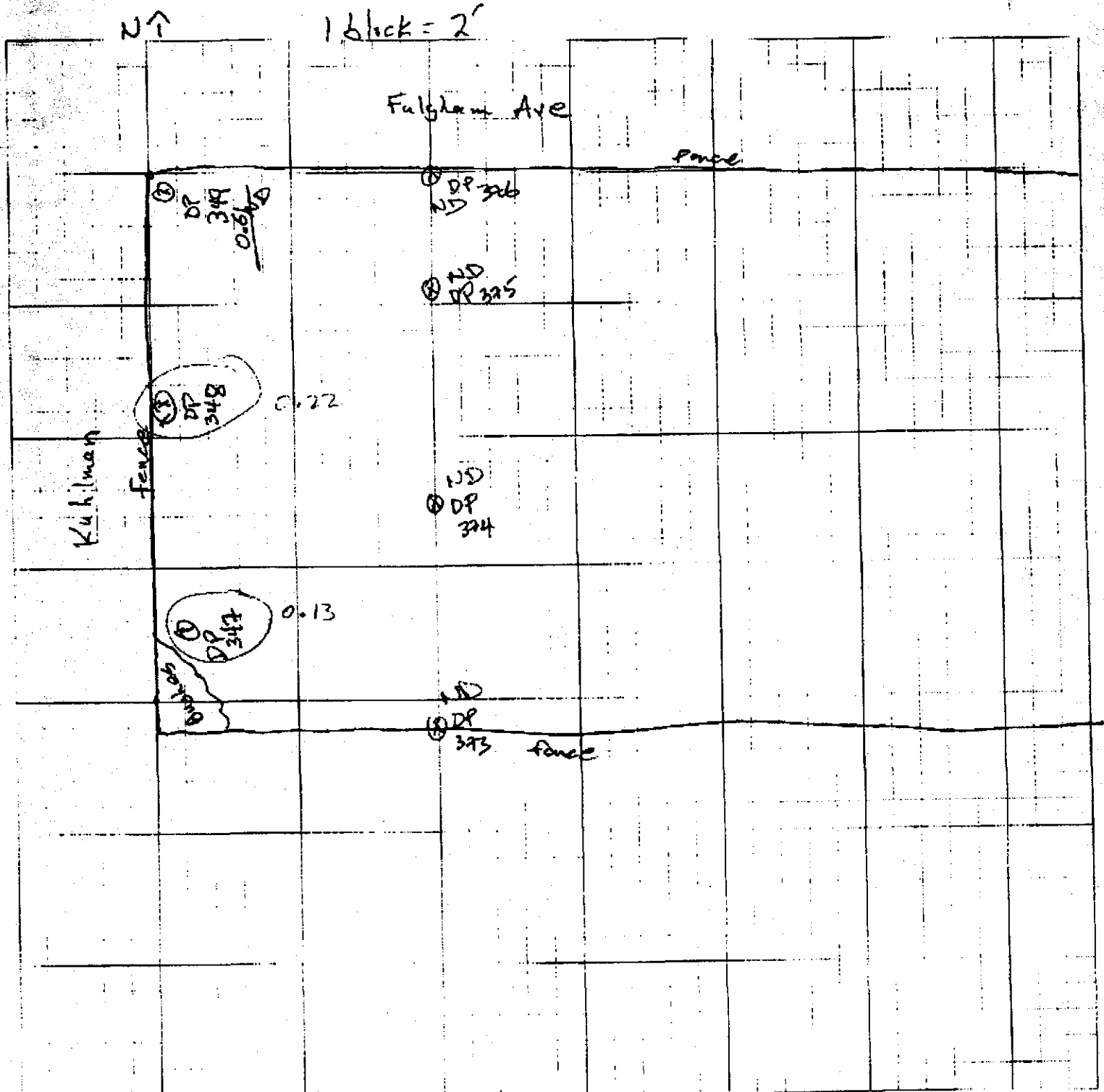
11



Kuhlman

OGDEN
■■■■■

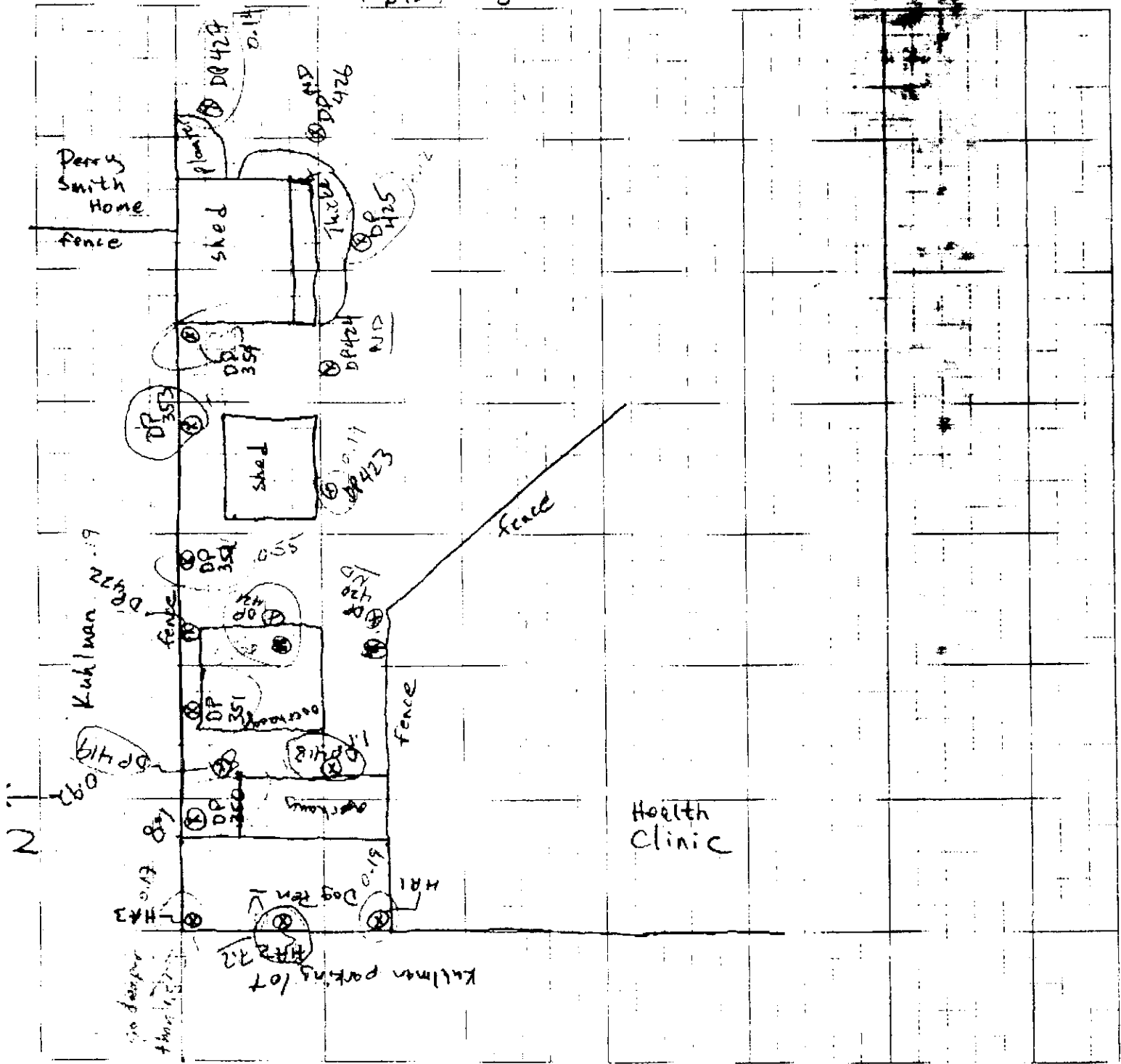
Job Name: Crystal Springs
Job Number:
Title: 409 N. Jackson (Amy Cooper)
Computed by: BF Checked by:
Date: 8-17-00 Sheet: 8 Of: 11





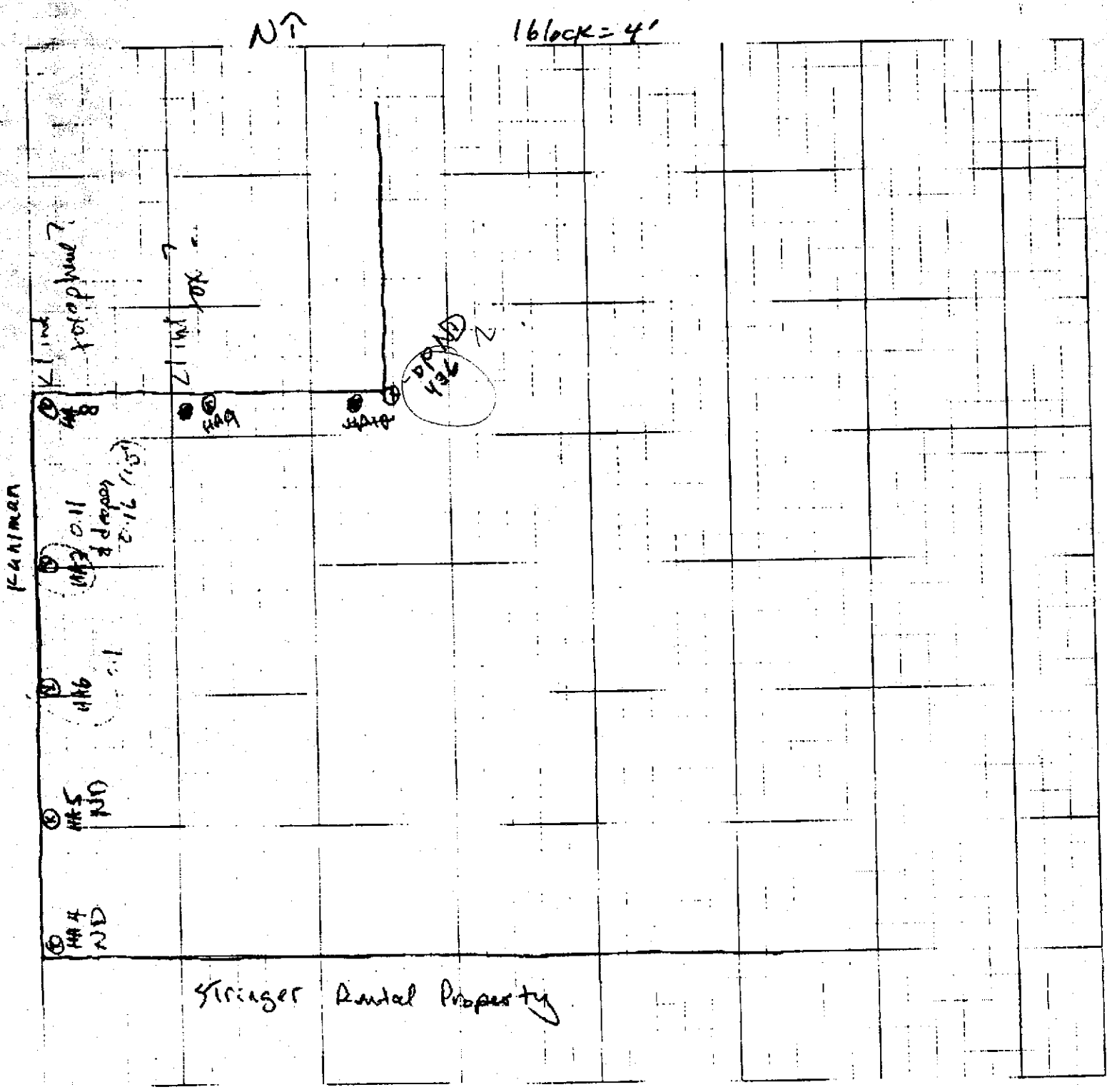
Job Name: Crystal Springs
Job Number:
Title: Dabney Home
Computed by: TJE
Date: 8-17-00
Sheet 11

1 block = 5'





Job Name: Crystal Springs
Job Number: _____
Title: Wright House
Computed by: _____ Checked by: _____
Date: 8-18-00 Shoot: 10 or 11



OGDEN

Job Name:

Crystal Springs

Job Number

Title:

Harold & Suzanne

Computed by

TBF

Date:

8-18-00

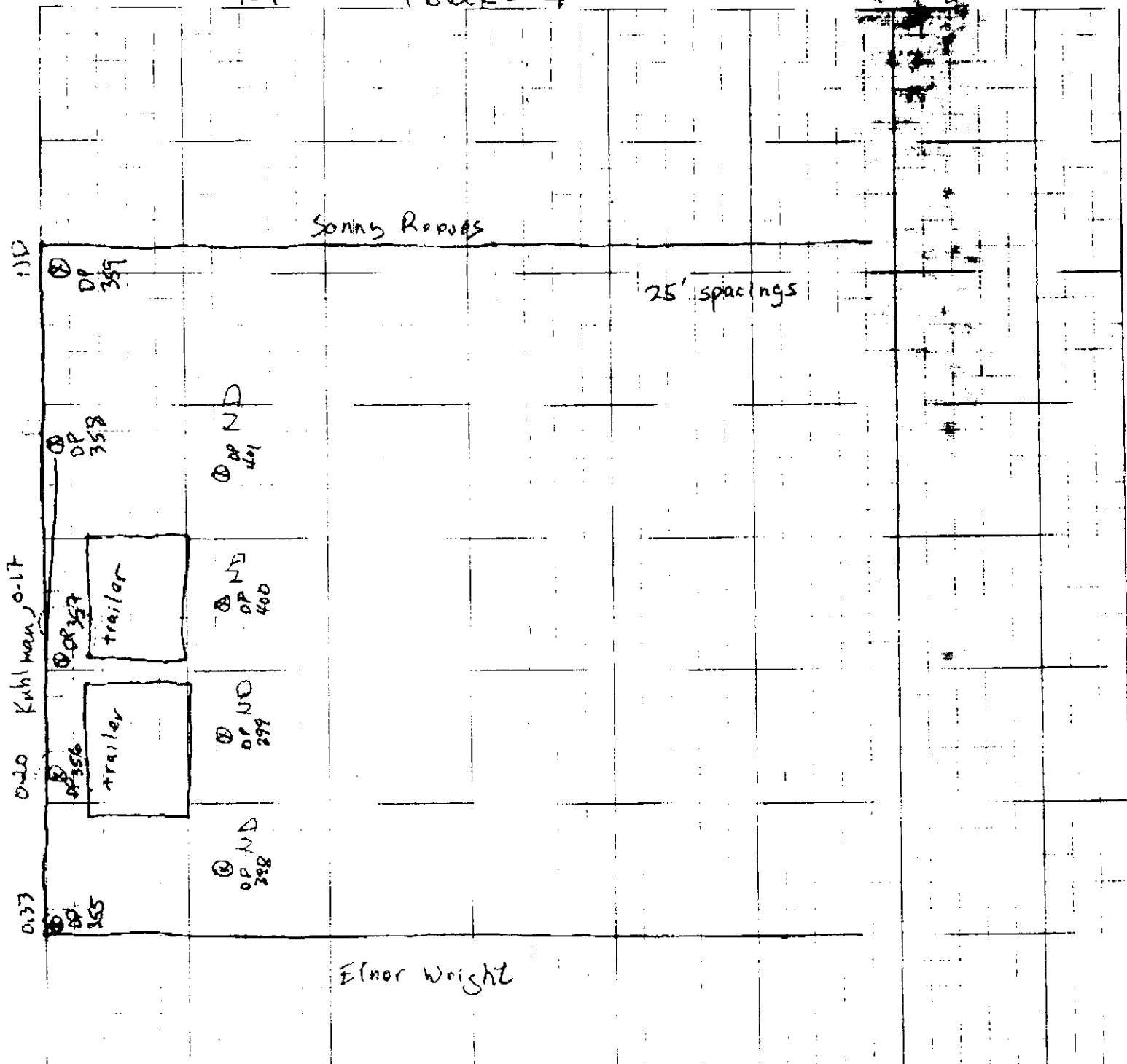
Checked by

Sheet

11 of 16

NT

1 block = 4'



OGDEN

Job Name:

Job Number:

Title:

Dabney yard - south side

Computed by:

Checked by:

Date:

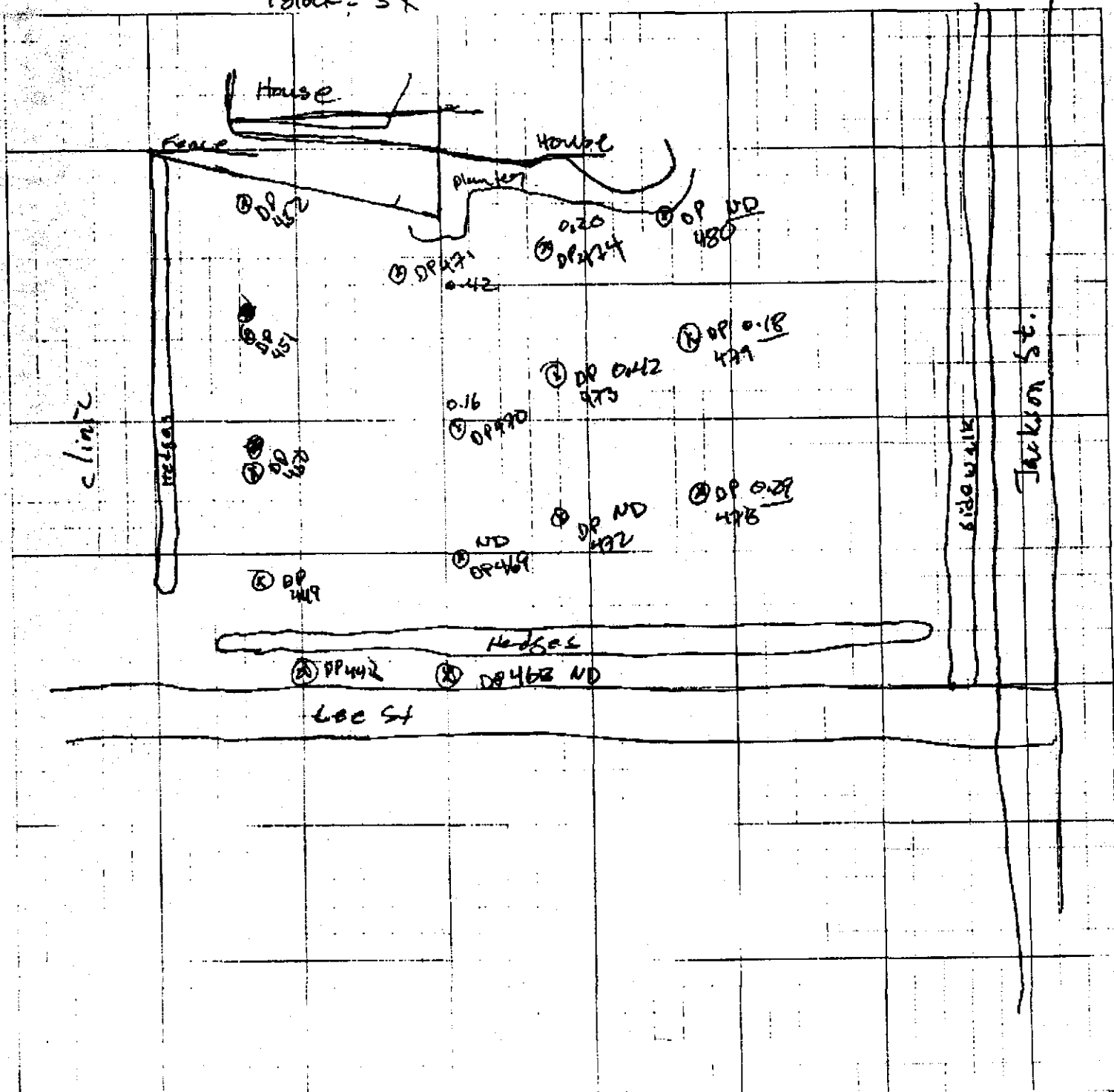
8/23/00

Sheet:

42

Of:

1 block = 5'



OGDEN

Job Name

Job Number

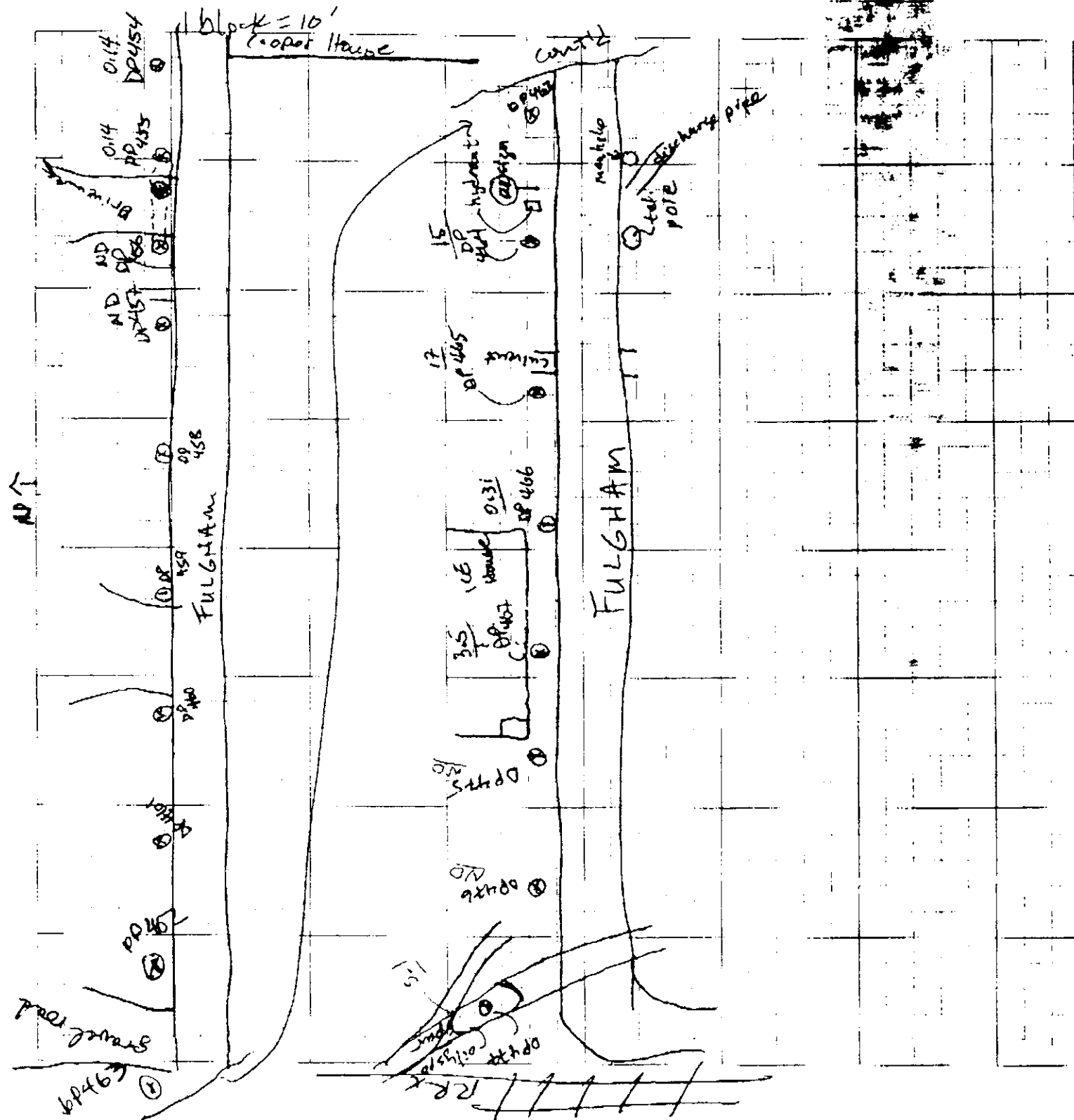
Title: *Fulham Ave*

Computed by

Date

Check

Sheet



OGDEN

Job Name:

Job Number:

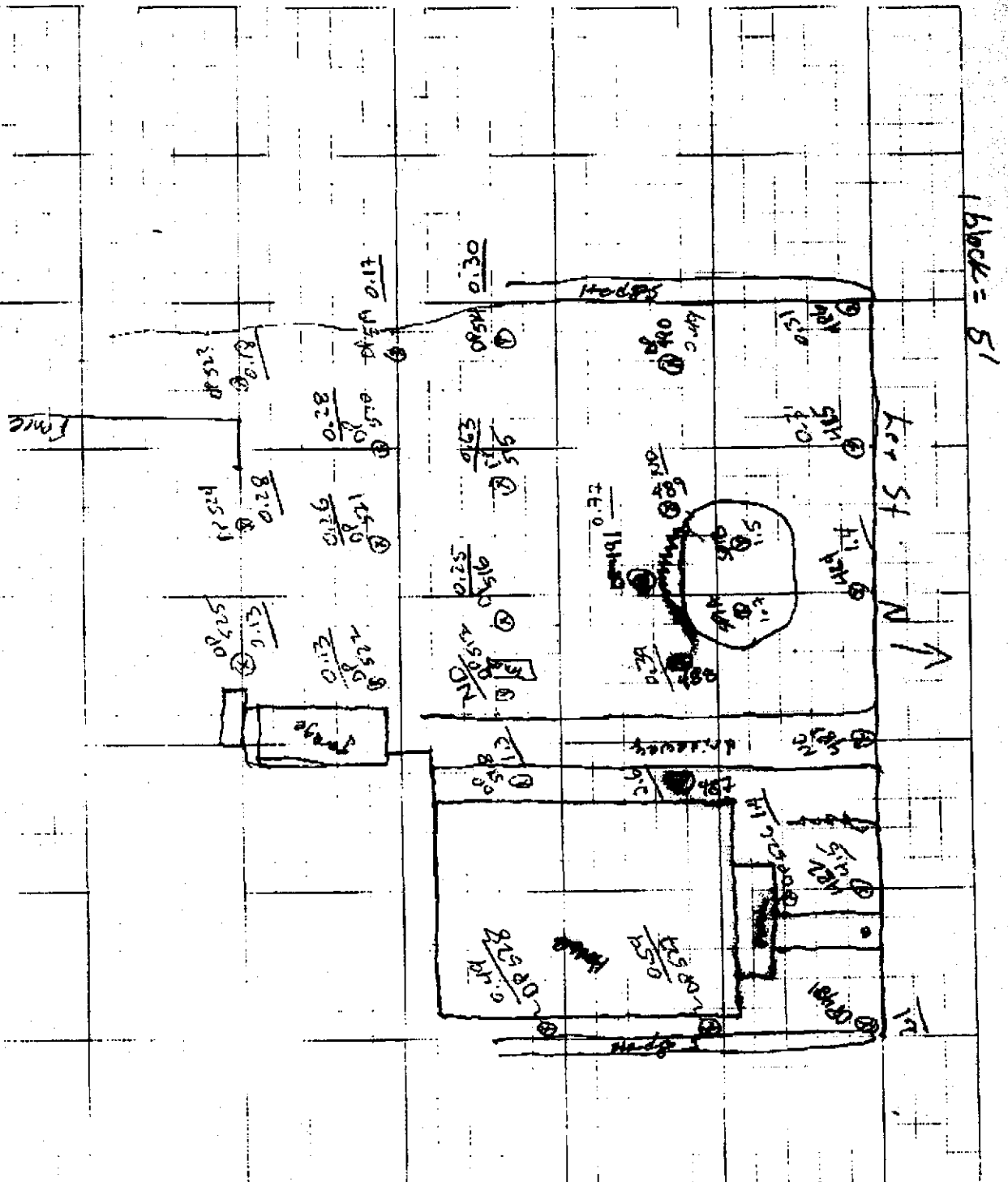
Title: Edwards property

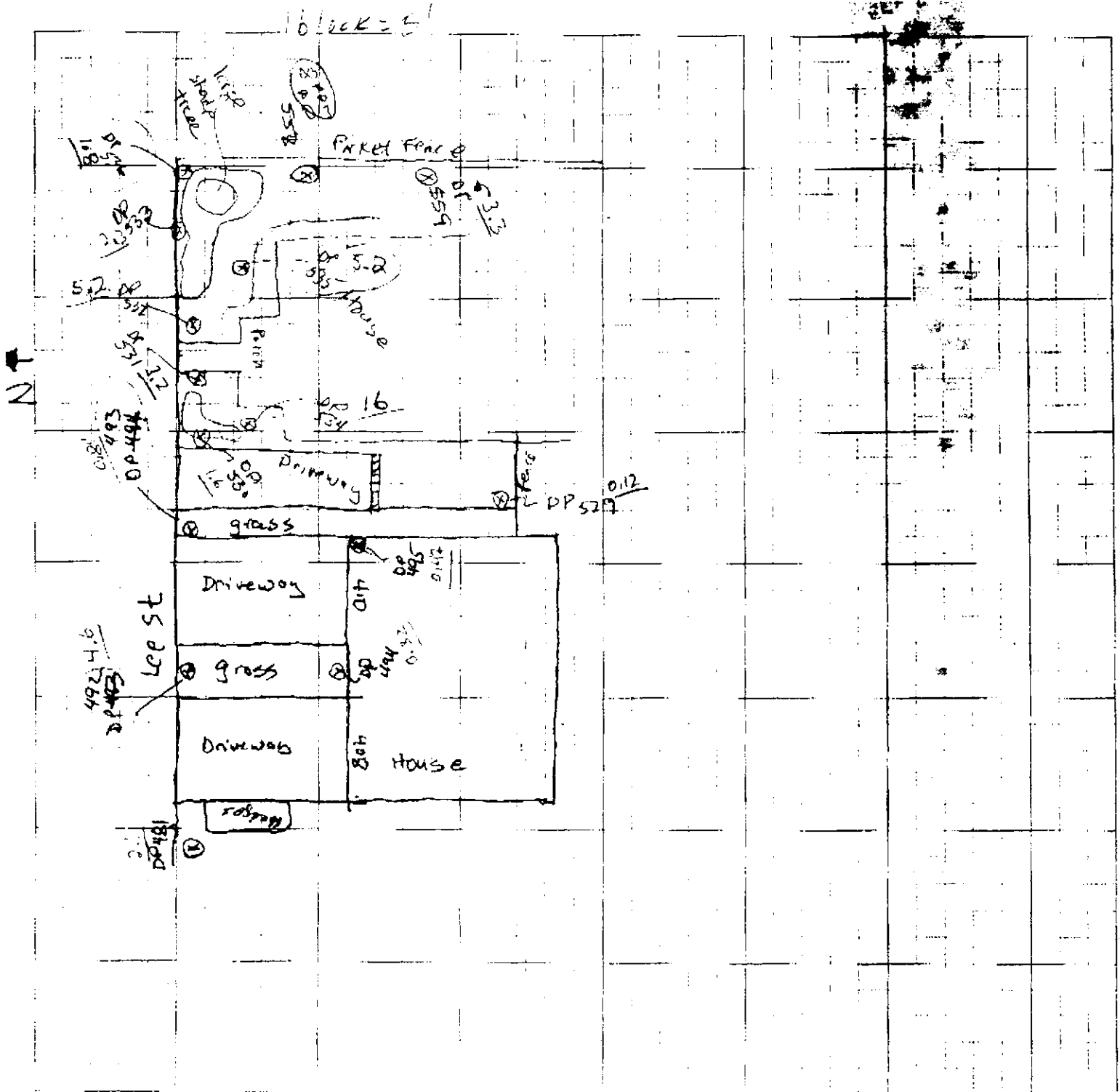
Computed by: T3F

Checked by:

Date: 8/24/00

Sheet: 14 Of:





OGDEN
■■■■■

Job Name:

Job Number:

Title:

Brent Property Lee St.

Computed by:

TJF

Checked by:

Date:

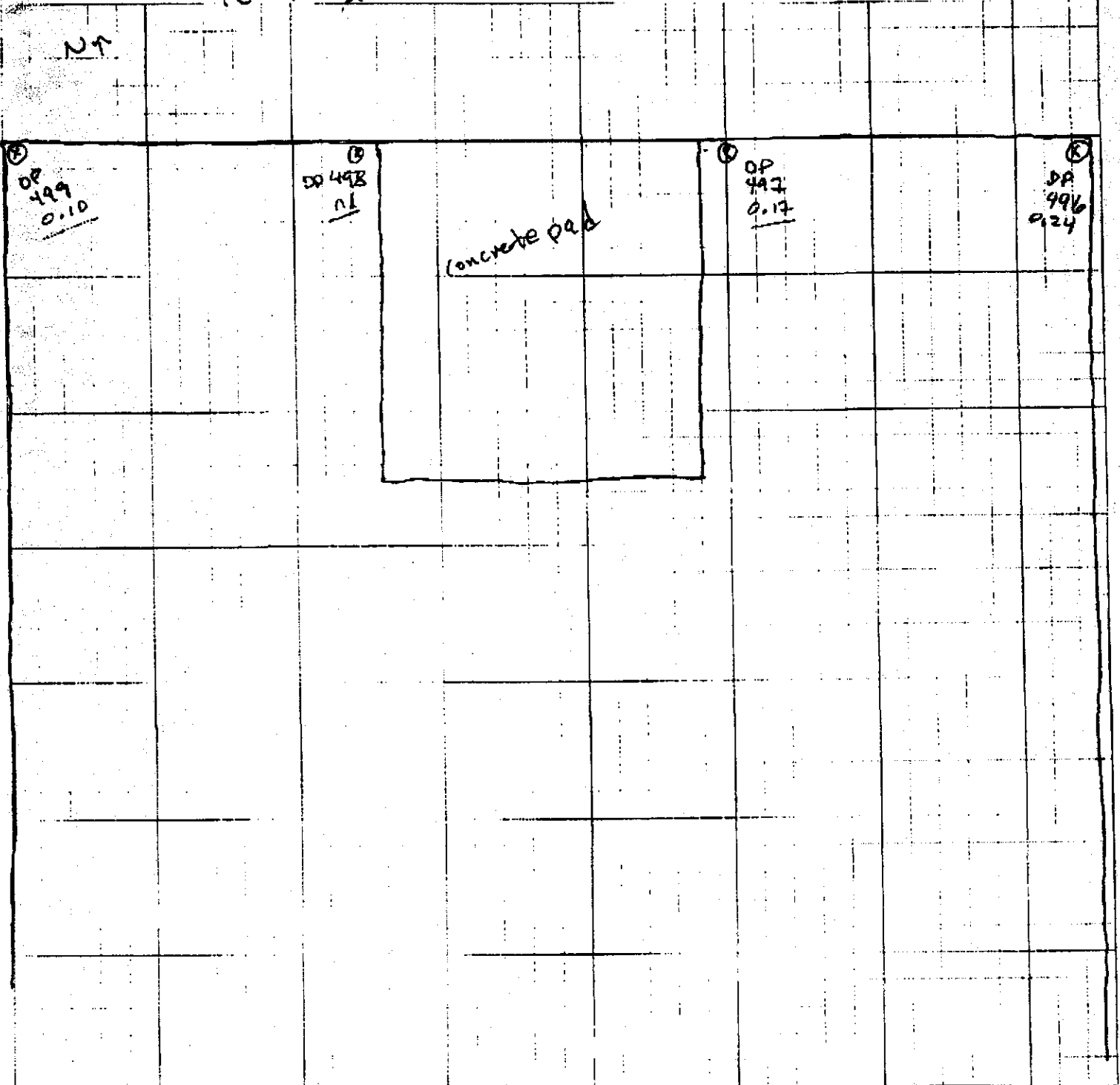
8/24/00

Sheet:

16

Of:

1 block = 2'



OGDEN
■■■■■

Job Name:

Job Number:

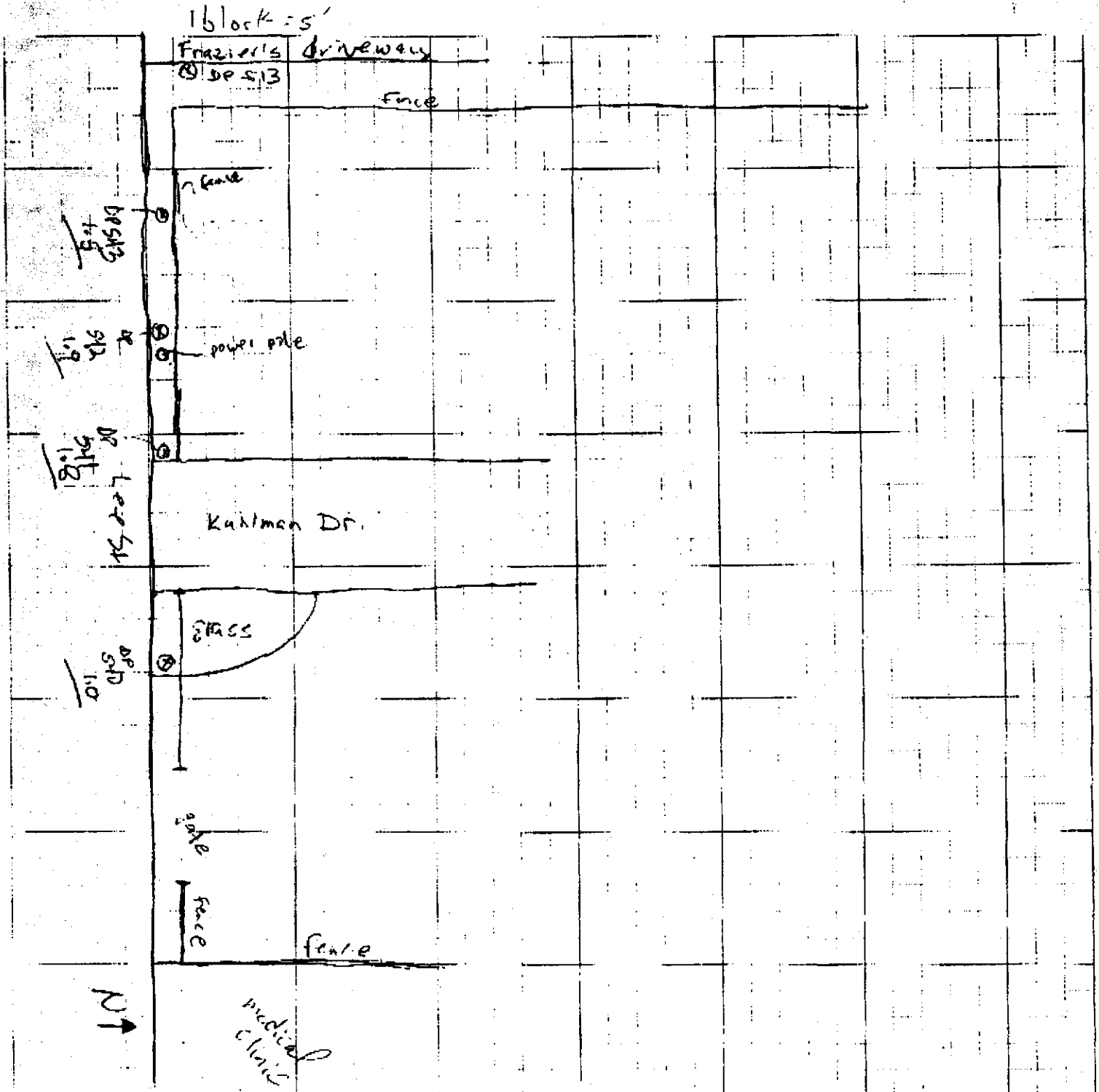
Title: Kuhlman South Parking Lot

Computed by:

Checked by:

Date: 8/26/2000

Sheet: 18 Of:





Job Name:

Job Number:

Title: 414 Lee St (Garage Shop)

Computed by: JF

Date: 8/26/2000

Checked by:
Reviewed by:
Shaded by:

1 block = 5' N ↑

